

Generation and Reservoirs Statistics

February 28, 2024



PUBLIC UTILITIES COMMISSION OF SRI LANKA

1. Daily Generation Mix in MWh

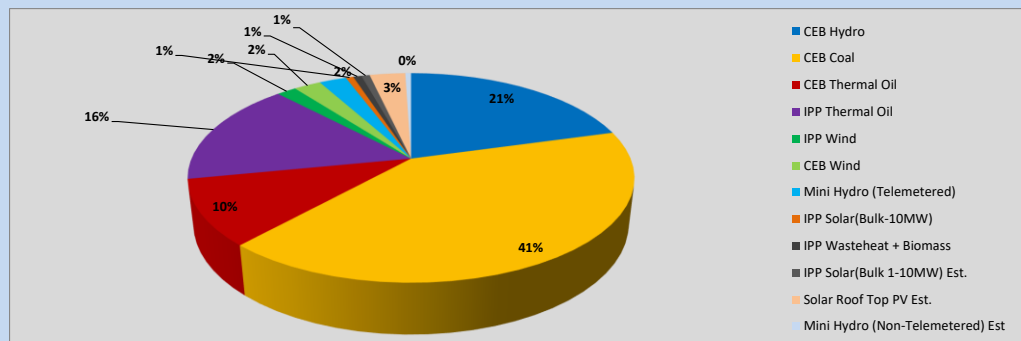


Table 01

	Generation (MWh)
CEB Hydro	9,856
CEB Coal	19,564
CEB Thermal Oil	4,843
IPP Thermal Oil	7,631
IPP Wind	806
CEB Wind	1,119
Mini Hydro (Telemetered)	1,122
IPP Solar (Bulk)	313
IPP Waste heat + Biomass	341
Total Generation (Excluding estimated figures)	45,595
* Estimated unserved energy	0
* Estimated Mini Hydro (Non telemetered)	239
* Estimated IPP Solar PV (Bulk 1-10MW)	346
* Estimated Solar Roof Top PV	1470
Total Generation (Including estimated figures)	47,650

* Estimated figures of CEB generation report

Table 02

	Installed Capacity (MW)
CEB Hydro	1644
CEB Coal	810
CEB Thermal Oil	773.1
IPP Thermal Oil (West Coast and ACE Embilipitiya)	362.9
IPP Wind	163
CEB Wind	100
Mini Hydro	422
IPP Waste heat + Biomass	54
IPP Solar	137
Rooftop Solar (Ordinary)	293
Rooftop Solar (LT Bulk)	272
Rooftop Solar (HT Bulk)	74

Data Source - Monthly Review Report [Nov-2023]

2. Cumulative Dispatch

Following data excludes the contribution from roof top solar, non telemetered solar and mini hydro plants

Table 03 - Current Month

Category	Dispatch (GWh)	
CEB Hydro	288	24.38%
CEB Coal	517	43.82%
CEB Thermal Oil	91	7.67%
IPP Thermal	108	9.18%
SPP Wind	18	1.52%
CEB Wind	20	1.71%
Mini Hydro *	69	5.82%
IPP Solar *	59	4.97%
IPP Waste heat + BMP	11	0.91%
Total	1,180	

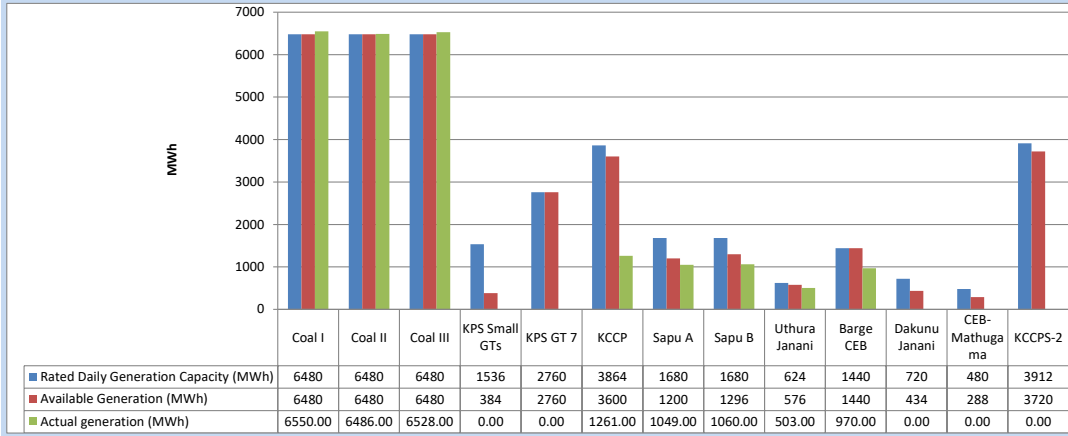
Table 04 - Current Year

Category	Dispatch (GWh)	
CEB Hydro	919	37.12%
CEB Coal	841	33.97%
CEB Thermal Oil	148	5.98%
IPP Thermal	154	6.22%
SPP Wind	34	1.39%
CEB Wind	42	1.70%
Mini Hydro *	188	7.58%
IPP Solar *	128	5.17%
IPP Waste heat	22	0.88%
Total	2,476	

*Including estimated contribution from non telemetered plants

3. CEB owned Thermal Plant Dispatch

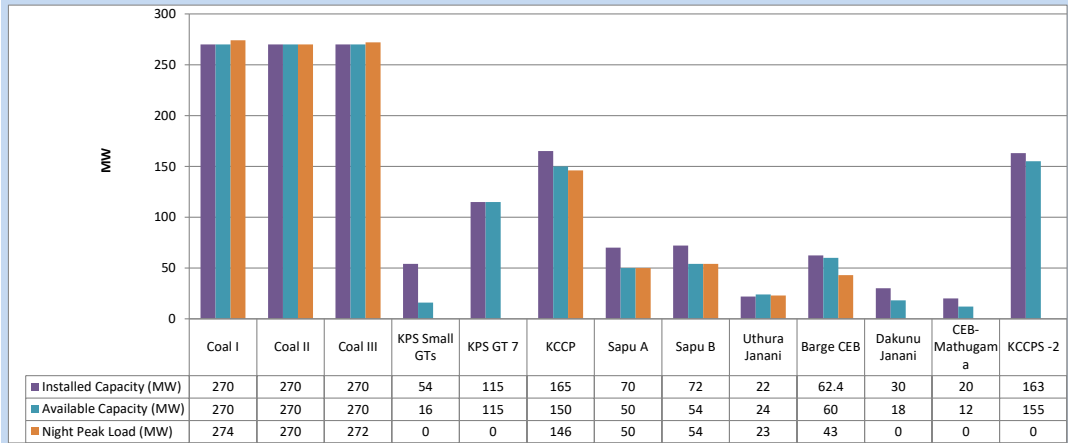
February 28, 2024



Available Generation is estimated based on plant availability at 6.00am on

February 29, 2024

4. CEB owned Thermal Plant Loading at the Night Peak

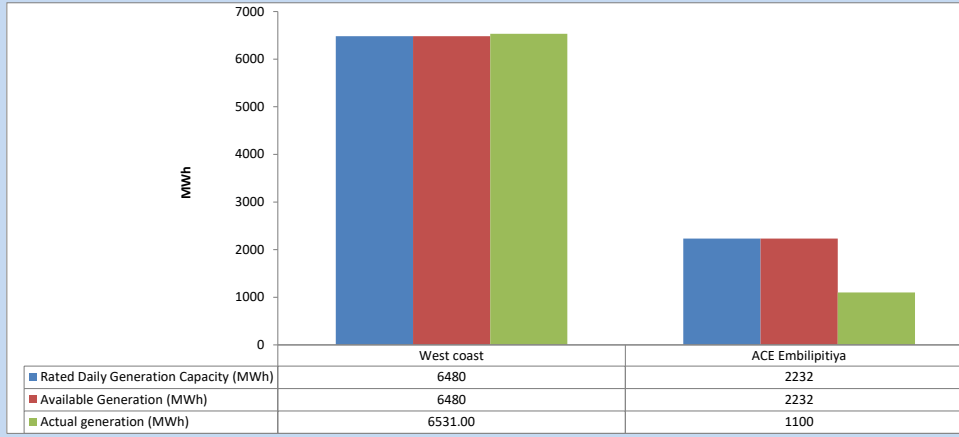


Plant availability is recorded at 6.00 am on

February 29, 2024

5. IPP owned Thermal Plant Dispatch

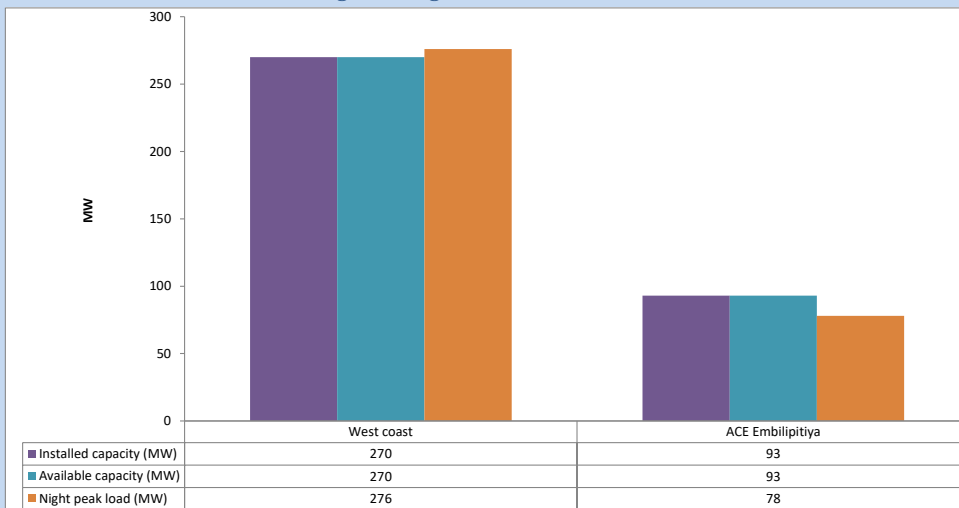
February 28, 2024



Available Generation is estimated based on plant availability at 6.00am on

February 29, 2024

6. IPP owned Thermal Plant Loading at the Night Peak

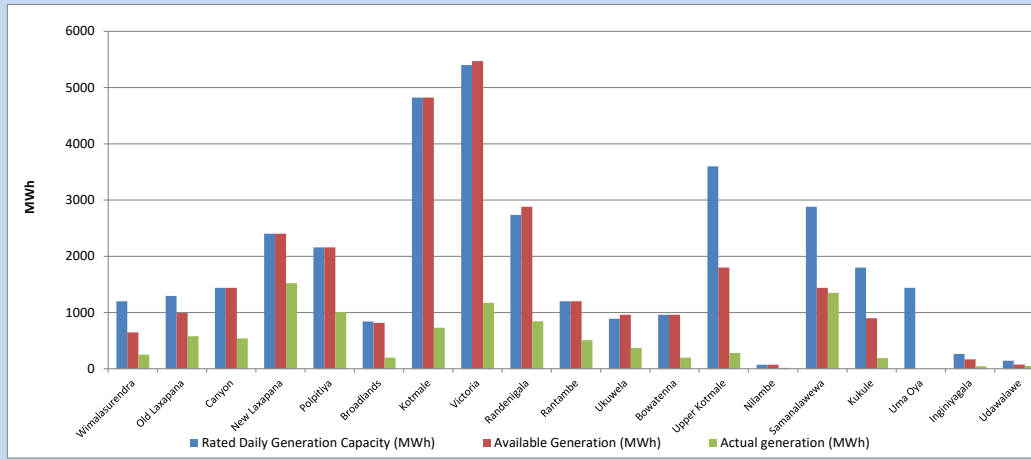


Plant availability is recorded at 6.00 am on

February 29, 2024

7. Major Hydro Plant Dispatch

February 28, 2024

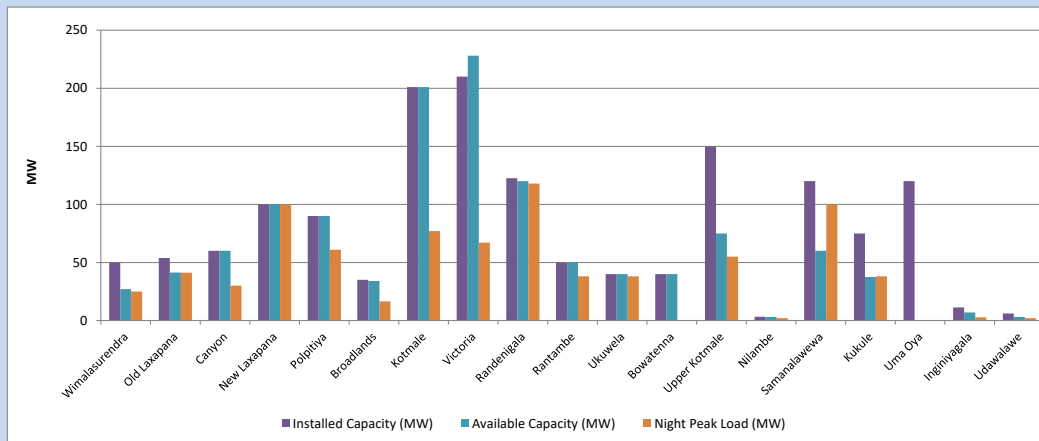


Available Generation is estimated based on plant availability at 6.00am on
Broadlands power plant is operating in the Commissioning Stage

February 29, 2024

8. Major Hydro Plant Loading at Night Peak

February 28, 2024



Plant availability is recorded at 6.00 am on
Broadlands power plant is operating in the Commissioning Stage

February 29, 2024

9. Summary of Major Plant performance

Table 05

Plant	Maximum Available Total Capacity	Plant Availability	Night peak Load	Plant Dispatch
	(MW)	(MW)	(MW)	(MWh)
Wimalasurendra	50	27	25	251
Old Laxapana	54	41	41	579
Canyon	60	60	30	540
New Laxapana	100	100	100	1,522
Polpitiya	90	90	61	1,010
Broadlands	35	34	17	197
Kotmale	201	201	77	730
Victoria	210	228	67	1,172
Randenigala	123	120	118	844
Rantambe	50	50	38	509
Ukuwela	40	40	38	370
Bowatenna	40	40	0	198
Upper Kotmale	150	75	55	281
Nilambe	3	3	2	17
Samanalawewa	120	60	100	1,351
Kukule	75	38	38	190
Uma Oya (Testing)	120	0	0	0
Inginiyagala	11	7	3	44
Udawalawe	6	3	2	51
Puttalam Coal I	270	270	274	6,550
Puttalam Coal II	270	270	270	6,486
Puttalam Coal III	270	270	272	6,528
KPS Small GTs	54	16	0	0
KPS GT 7	115	115	0	0
KCCP	165	150	146	1,261
Sapugaskanda A	70	50	50	1,049
Sapugaskanda B	72	54	54	1,060
Uthura Janani	22	24	23	503
Barge CEB	62	60	43	970
CEB-Hambantota	30	18	0	0
CEB-Mathugama	20	12	0	0
ACE Matara	24	0	0	0
Asia Power	50	0	0	0
KCCPS -2	163	155	0	0
West Coast	270	270	276	6,531
Nothern Power	36	0	0	0
ACE Embilipitiya	93	93	78	1,100
Total	3,594	3,044	2,472	45,595

Note-

Plant availability is the availability recorded at 6 am on

February 29, 2024

Installed Capacity is sourced from CEB Annual Report- 2022

10. Contribution to the Night Peak in MW

February 28, 2024

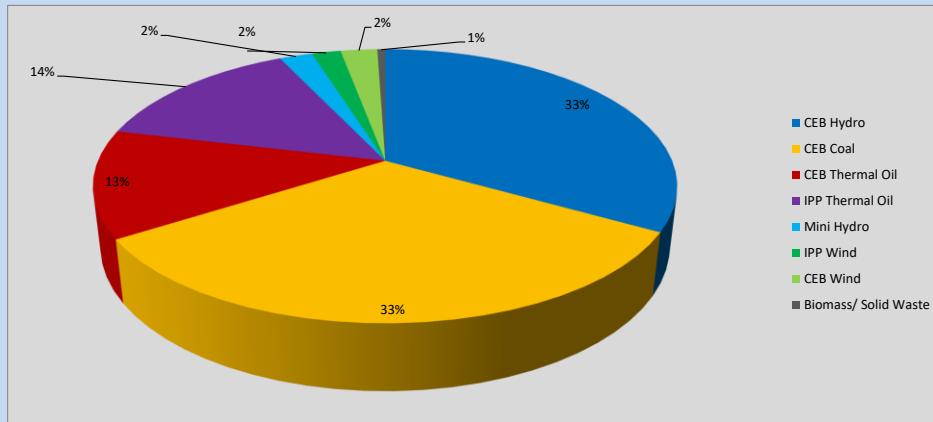


Table 06

CEB Hydro	825	MW
CEB Coal	816	MW
CEB Thermal Oil	316	MW
IPP Thermal Oil	354	MW
Mini Hydro (Telemetered)	54	MW
IPP Wind	47.8	MW
CEB Wind	60.4	MW
Biomass/ Solid Waste	13	MW

Recorded Peak Demand Data

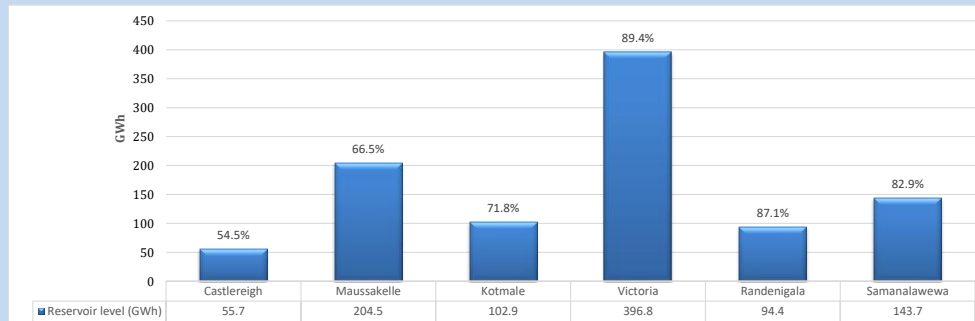
Table 07

Night Peak*	2,486	MW
Day Peak Maximum Demand	2,216	MW
Day Peak Minimum Demand	1,774	MW
Off Peak Minimum Demand	1,464	MW

Above figures are excluding contribution from roof top solar, non telemetered solar and mini hydro plants

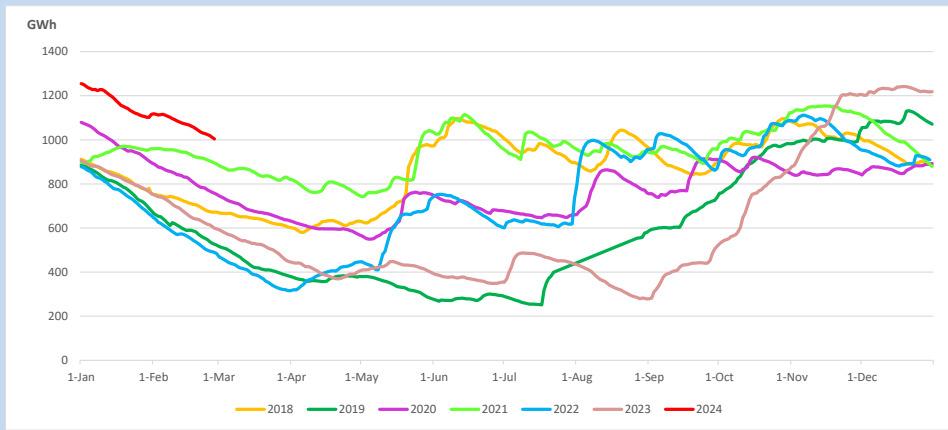
Reservoir Levels -

as at 06.00 Hr on February 29, 2024

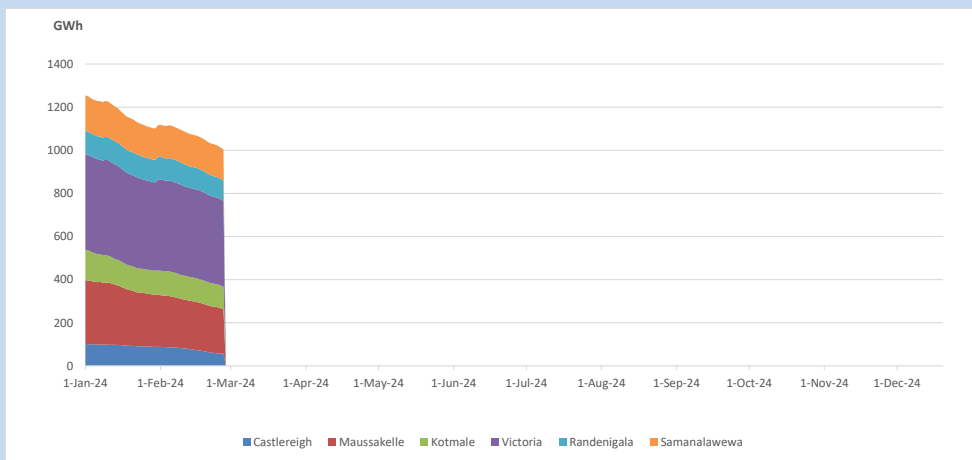


Total Reservoir Level 998 GWh
 % of Total capacity 78.1%

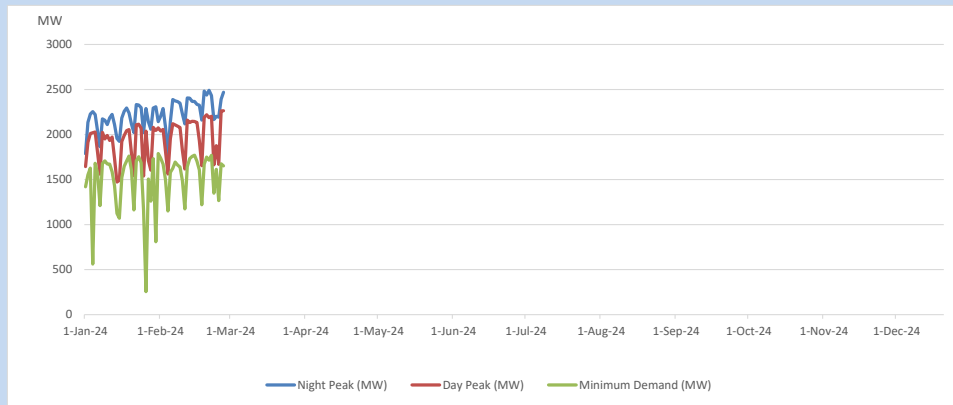
11. Comparison of Total Reservoir Storage Levels with Past Years



12. Variation of Major Hydro Reservoir Levels in the current year (GWh)



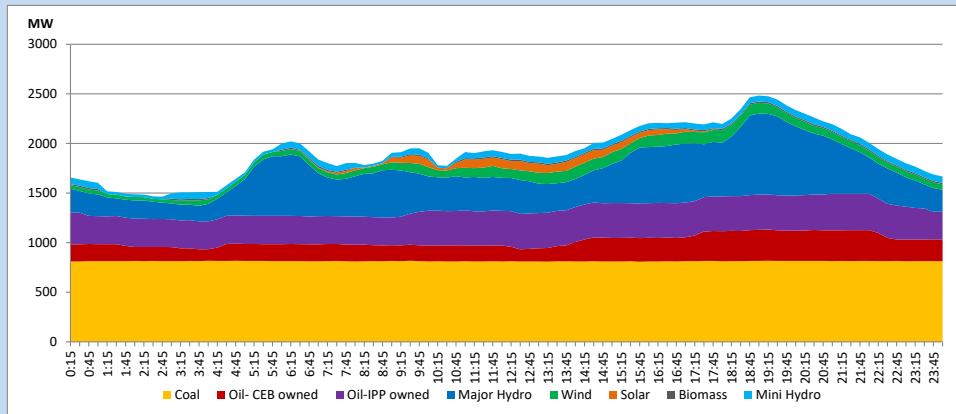
13. Variation of Demand during the current year



The above figures are excluding contribution from roof top solar, non telemetered solar and mini hydro plants

14. Daily Load Curve

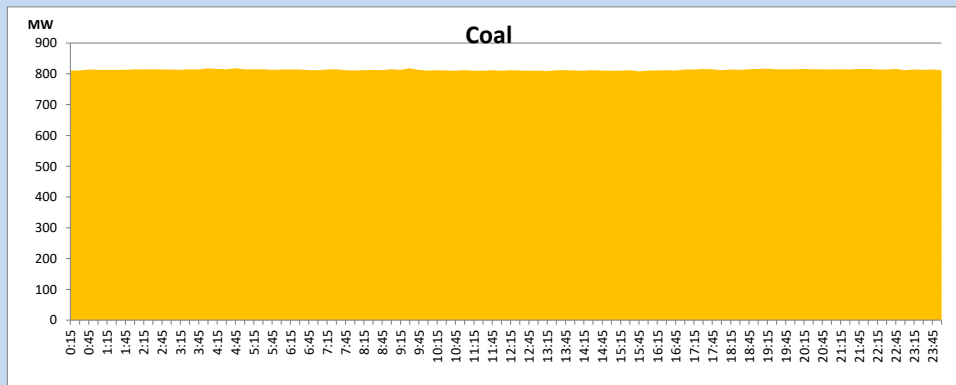
February 28, 2024



Solar and wind data is based on Telemetered Power Stations only

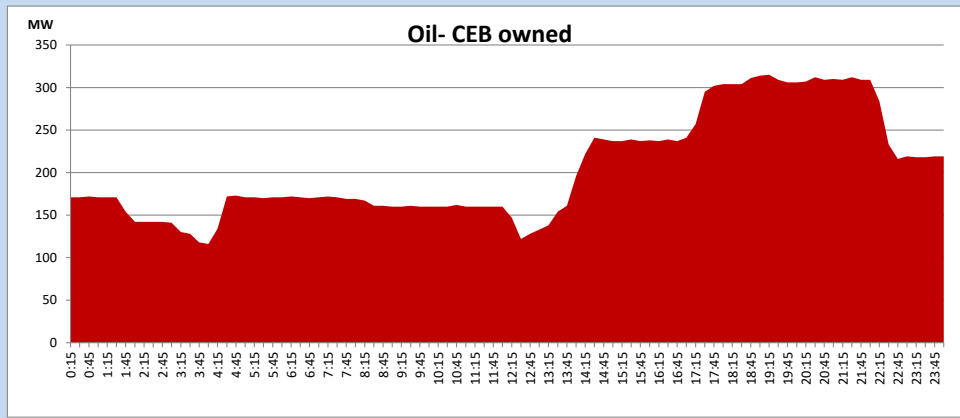
Coal Generation during

February 28, 2024



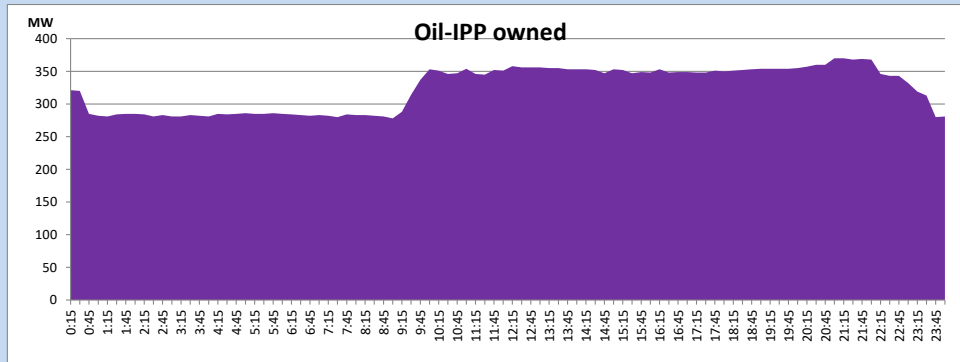
CEB Oil Plant Generation during

February 28, 2024



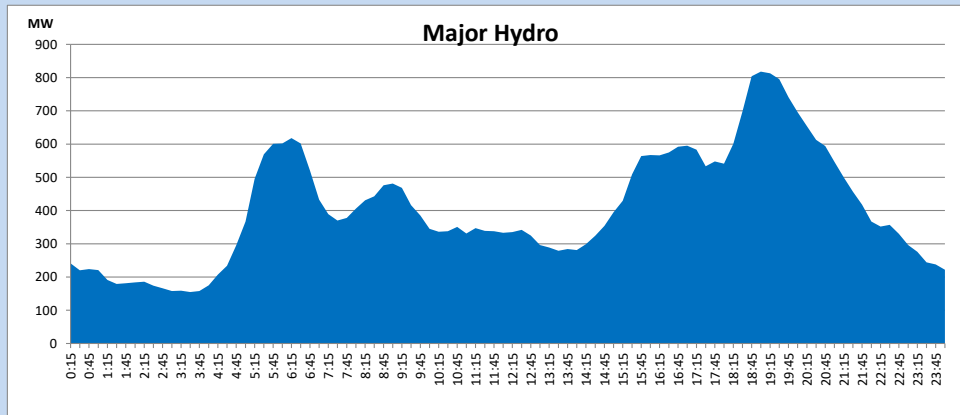
IPP Oil Plant Generation during

February 28, 2024



Major Hydro Generation during

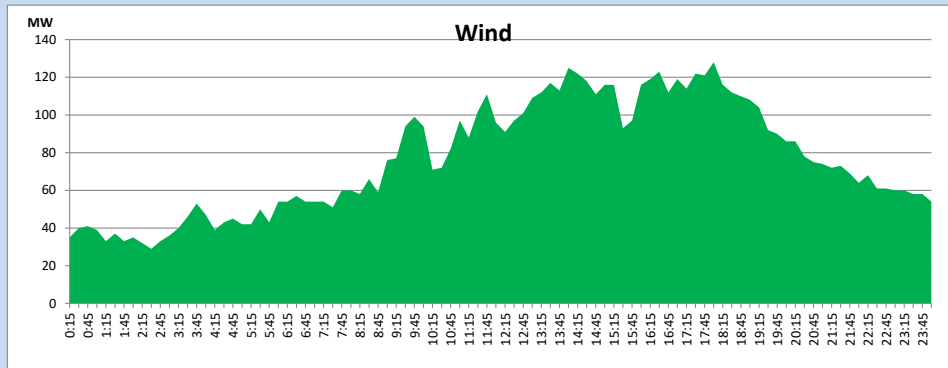
February 28, 2024



Wind Generation during

February 28, 2024

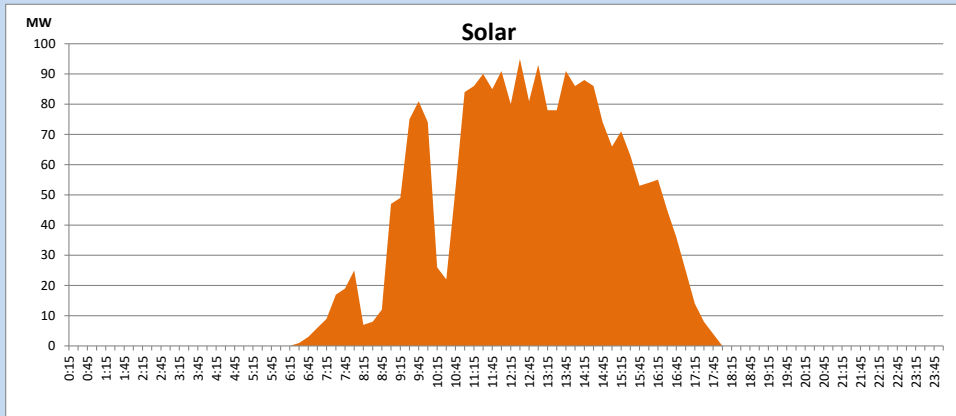
Based on Telemetered Power Stations only



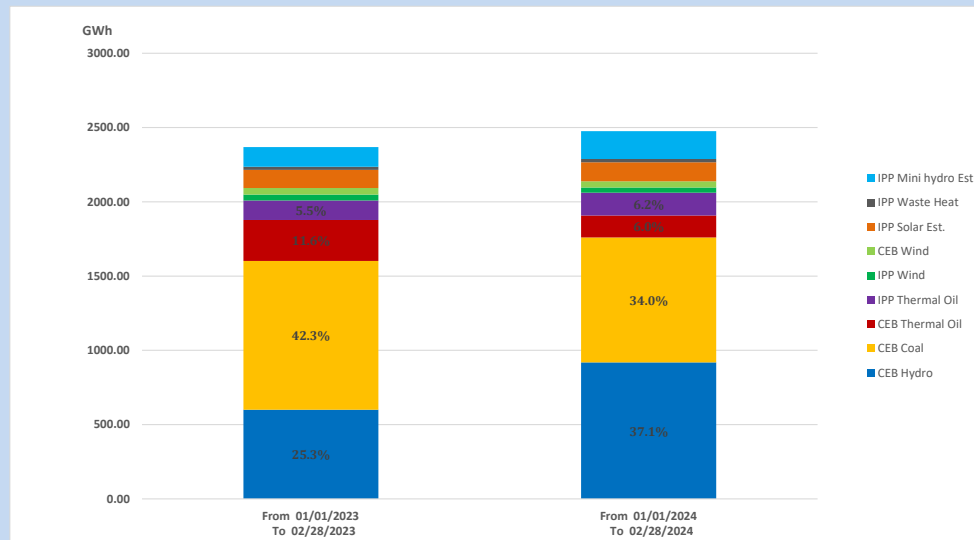
Solar Generation during

February 28, 2024

Based on Telemetered Power Stations only



15. Cumulative Dispatch Comparison with Last Year



Cumulative dispatch
 From 01/01/2023 To 02/28/2023
 From 01/01/2024 To 02/28/2024

2369 GWh
 2476 GWh

The above figures are including contribution from roof top solar, non telemetered solar and mini hydro plants)
 Unserviced energy due to power cuts has been excluded in 2023

Thermal Plant Fuel types

Table 08

Power Station	Primary Fuel
CEB Thermal	
Sapugaskanda 1	Heavy Fuel
Sapugaskanda 2	Heavy Fuel
Kelanitissa Small Gas Turbines	Auto Diesel
GT 7 - Kelanitissa	Auto Diesel
Kelanitissa CCY	Naphtha or Diesel
Lakvijaya 1	Coal
Lakvijaya 2	Coal
Lakvijaya 3	Coal
Uthuru Janani	Heavy Fuel
Barge CEB	Heavy Fuel
KCCPS -2	Auto Diesel

Power Station	Primary Fuel
Private Thermal	
West Coast	Auto Diesel / Heavy Fuel
ACE Embilipitiya	Heavy Fuel

Major Incidents reported during the day

February 28, 2024

- 1) Puttalam 132/33kV T/F 01, which was tripped at 2:09hrs, restored at 11:13hrs.
- 2) Veyangoda 132/33kV T/F 03 tripped from both ends at 16:14hrs due to operation of REF protection. Veyangoda 132/33kV T/F 03 restored at 21:14hrs.
- 3) Uma oya unit T/F 02 energized for the first time for the soak test at 19:51hrs.
- 4) Samanalawewa unit 01 made unavailable from 4:45hrs(29.02.2024) due to Synchronizing failure. Samanalawewa unit 01 is yet to resume generation.