

Generation and Reservoirs Statistics

March 25, 2024



PUBLIC UTILITIES COMMISSION OF SRI LANKA

1. Daily Generation Mix in MWh

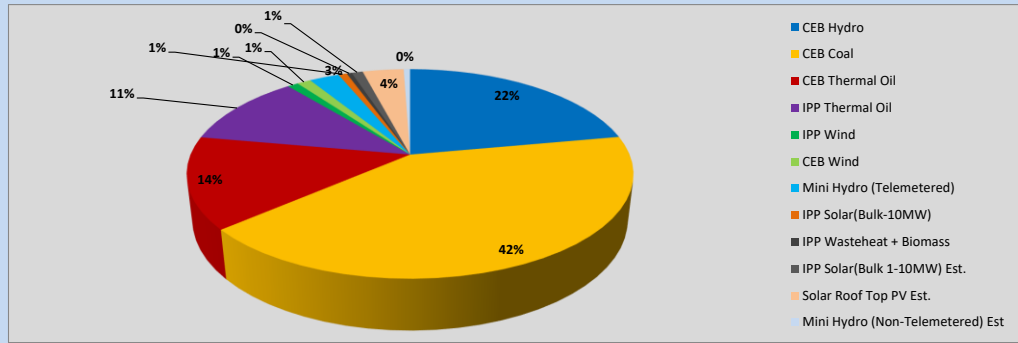


Table 01

	Generation (MWh)
CEB Hydro	10,389
CEB Coal	19,527
CEB Thermal Oil	6,647
IPP Thermal Oil	5,267
IPP Wind	441
CEB Wind	561
Mini Hydro (Telemetered)	1,218
IPP Solar (Bulk)	346
IPP Waste heat + Biomass	206
Total Generation (Excluding estimated figures)	44,602
* Estimated unserved energy	0
* Estimated Mini Hydro (Non telemetered)	260
* Estimated IPP Solar PV (Bulk 1-10MW)	455
* Estimated Solar Roof Top PV	1670
Total Generation (Including estimated figures)	46,987

* Estimated figures of CEB generation report

Table 02

	Installed Capacity (MW)
CEB Hydro	1644
CEB Coal	810
CEB Thermal Oil	773.1
IPP Thermal Oil (West Coast)	270
IPP Wind	163
CEB Wind	100
Mini Hydro	422
IPP Waste heat + Biomass	54
IPP Solar	137
Rooftop Solar (Ordinary)	293
Rooftop Solar (LT Bulk)	272
Rooftop Solar (HT Bulk)	74

Data Source - Monthly Review Report [Nov-2023]

2. Cumulative Dispatch

Following data excludes the contribution from roof top solar, non telemetered solar and mini hydro plants

Table 03 - Current Month

Category	Dispatch (GWh)	
CEB Hydro	263	21.56%
CEB Coal	480	39.36%
CEB Thermal Oil	184	15.10%
IPP Thermal	128	10.51%
SPP Wind	9	0.71%
CEB Wind	9	0.77%
Mini Hydro *	37	3.00%
IPP Solar *	65	5.29%
IPP Waste heat + BMP	9	0.73%
Total	1,220	

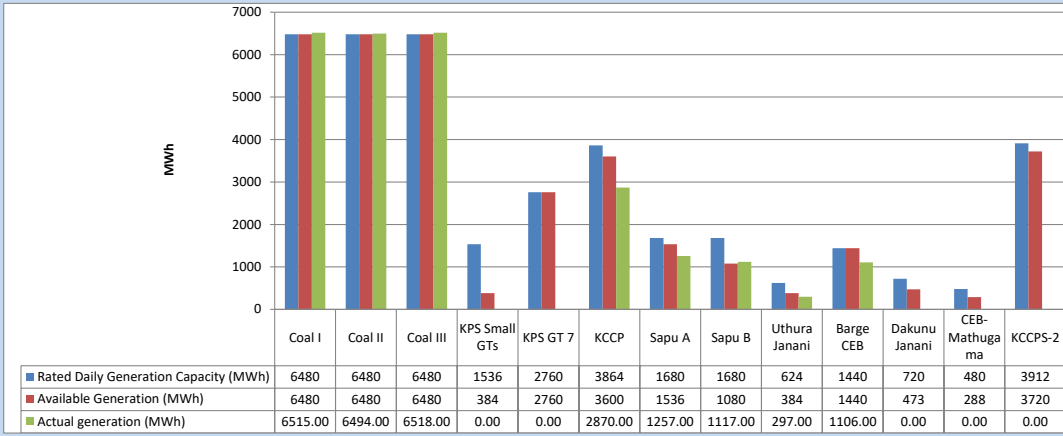
Table 04 - Current Year

Category	Dispatch (GWh)	
CEB Hydro	1,201	32.08%
CEB Coal	1,360	36.33%
CEB Thermal Oil	336	8.98%
IPP Thermal	297	7.93%
SPP Wind	45	1.19%
CEB Wind	53	1.43%
Mini Hydro *	226	6.03%
IPP Solar *	195	5.20%
IPP Waste heat	31	0.83%
Total	3,745	

*Including estimated contribution from non telemetered plants

3. CEB owned Thermal Plant Dispatch

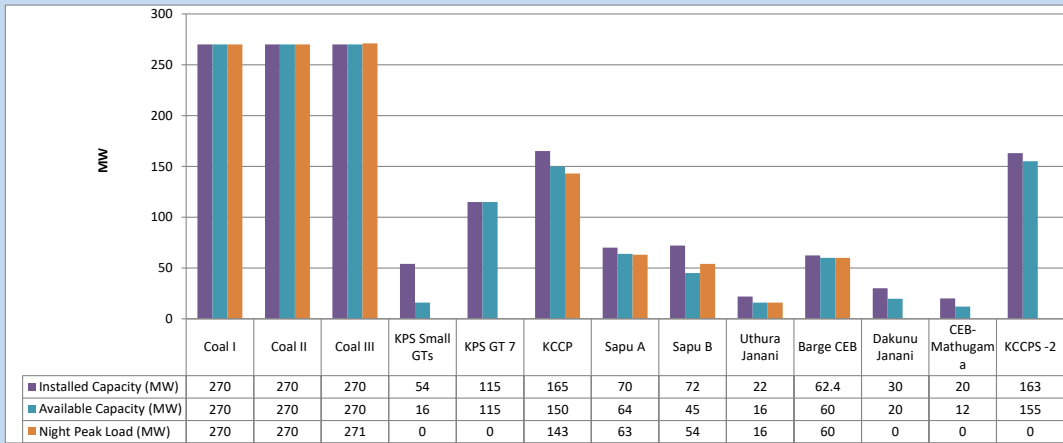
March 25, 2024



Available Generation is estimated based on plant availability at 6.00am on

March 26, 2024

4. CEB owned Thermal Plant Loading at the Night Peak

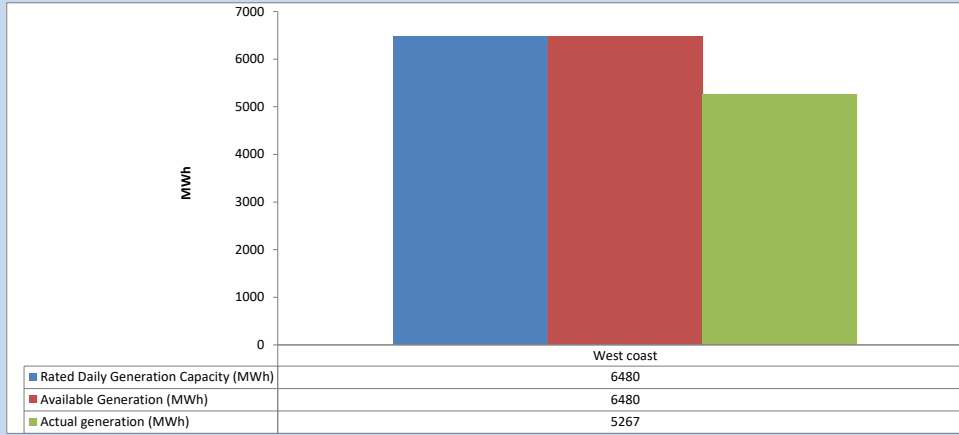


Plant availability is recorded at 6.00 am on

March 26, 2024

5. IPP owned Thermal Plant Dispatch

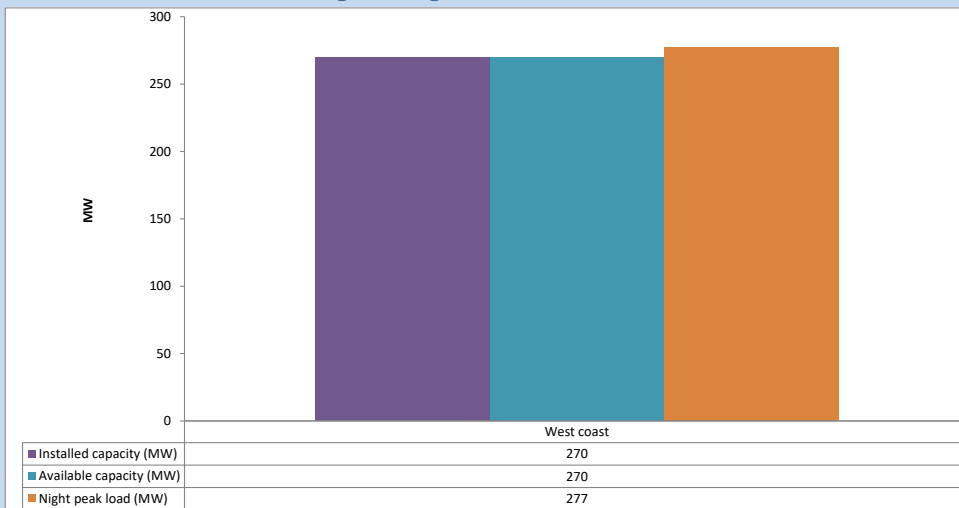
March 25, 2024



Available Generation is estimated based on plant availability at 6.00am on

March 26, 2024

6. IPP owned Thermal Plant Loading at the Night Peak

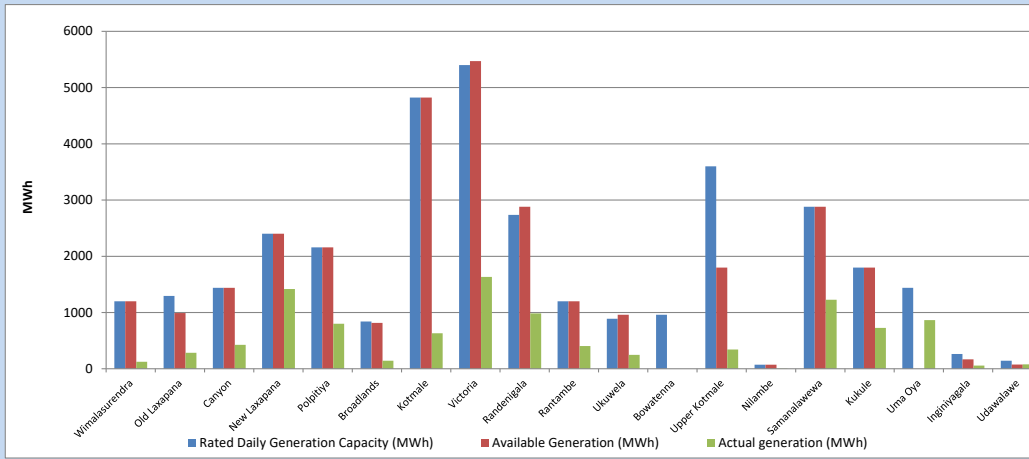


Plant availability is recorded at 6.00 am on

March 26, 2024

7. Major Hydro Plant Dispatch

March 25, 2024

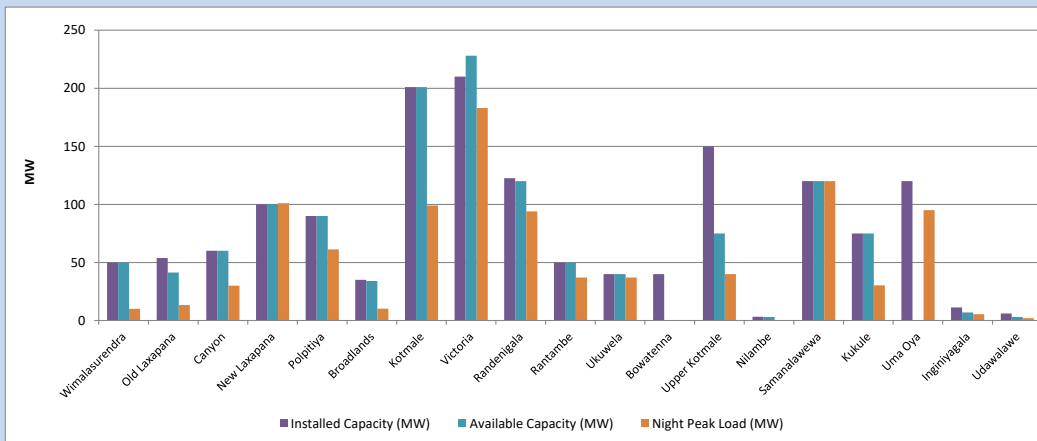


Available Generation is estimated based on plant availability at 6.00am on
Broadlands power plant is operating in the Commissioning Stage

March 26, 2024

8. Major Hydro Plant Loading at Night Peak

March 25, 2024



Plant availability is recorded at 6.00 am on
Broadlands power plant is operating in the Commissioning Stage

March 26, 2024

9. Summary of Major Plant performance

Table 05

Plant	Maximum Available Total Capacity	Plant Availability	Night peak Load	Plant Dispatch
	(MW)	(MW)	(MW)	(MWh)
Wimalasurendra	50	50	10	124
Old Laxapana	54	41	13	284
Canyon	60	60	30	424
New Laxapana	100	100	101	1,417
Polpitiya	90	90	61	800
Broadlands	35	34	10	144
Kotmale	201	201	99	630
Victoria	210	228	183	1,634
Randenigala	123	120	94	984
Rantambe	50	50	37	404
Ukuwela	40	40	37	247
Bowatenna	40	0	0	0
Upper Kotmale	150	75	40	342
Nilambe	3	3	0	5
Samanalawewa	120	120	120	1,227
Kukule	75	75	30	726
Uma Oya (Testing)	120	0	95	864
Inginiyagala	11	7	6	56
Udawalawe	6	3	2	77
Puttalam Coal I	270	270	270	6,515
Puttalam Coal II	270	270	270	6,494
Puttalam Coal III	270	270	271	6,518
KPS Small GTs	54	16	0	0
KPS GT 7	115	115	0	0
KCCP	165	150	143	2,870
Sapugaskanda A	70	64	63	1,257
Sapugaskanda B	72	45	54	1,117
Uthura Janani	22	16	16	297
Barge CEB	62	60	60	1,106
CEB-Hambantota	30	20	0	0
CEB-Mathugama	20	12	0	0
ACE Matara	24	0	0	0
Asia Power	50	0	0	0
KCCPS -2	163	155	0	0
West Coast	270	270	277	5,267
Nothern Power	36	0	0	0
ACE Embilipitiya	93	0	0	0
Total	3,594	3,030	2,509	44,602

Note-

Plant availability is the availability recorded at 6 am on

March 26, 2024

Installed Capacity is sourced from CEB Annual Report- 2022

10. Contribution to the Night Peak in MW

March 25, 2024

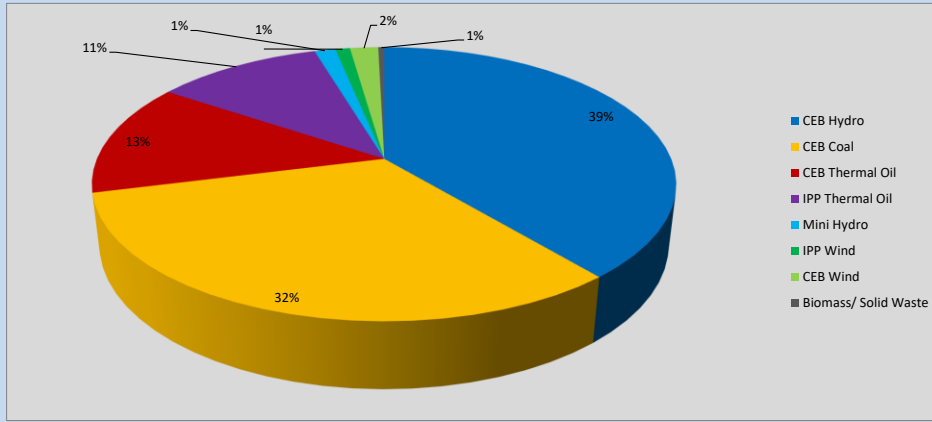


Table 06

CEB Hydro	981	MW
CEB Coal	811	MW
CEB Thermal Oil	336	MW
IPP Thermal Oil	277	MW
Mini Hydro (Telemetered)	35	MW
IPP Wind	24.5	MW
CEB Wind	47.1	MW
Biomass/ Solid Waste	10	MW

Recorded Peak Demand Data

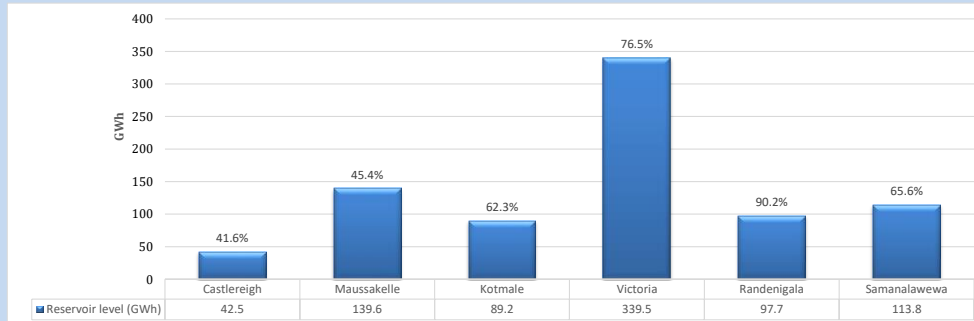
Table 07

Night Peak*	2,521	MW
Day Peak Maximum Demand	2,268	MW
Day Peak Minimum Demand	1,623	MW
Off Peak Minimum Demand	1,304	MW

Above figures are excluding contribution from roof top solar, non telemetered solar and mini hydro plants

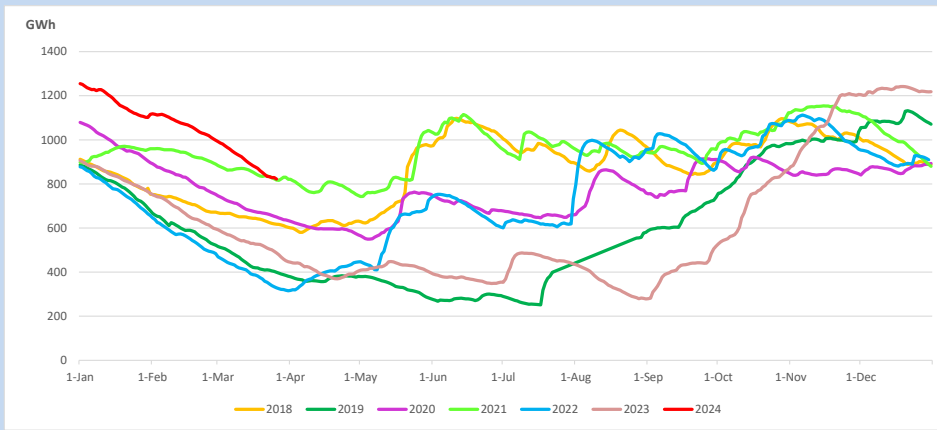
Reservoir Levels -

as at 06.00 Hr on March 26, 2024

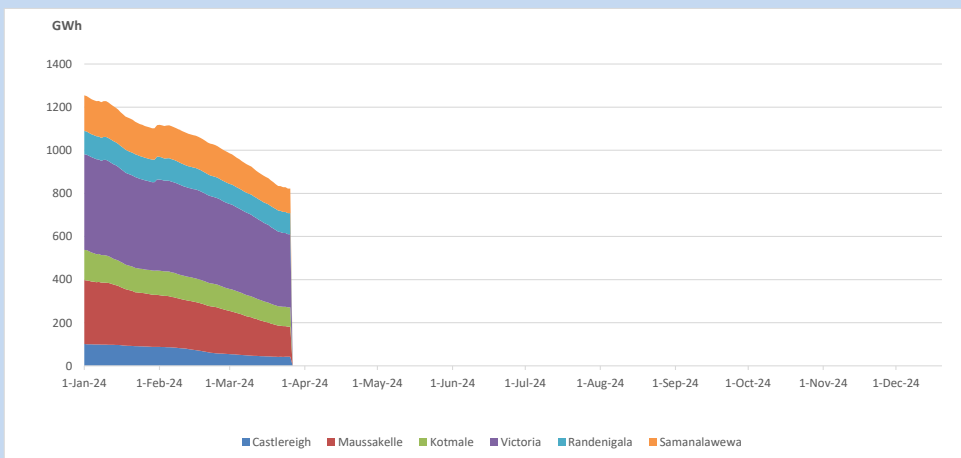


Total Reservoir Level 822.3 GWh
 % of Total capacity 64.3%

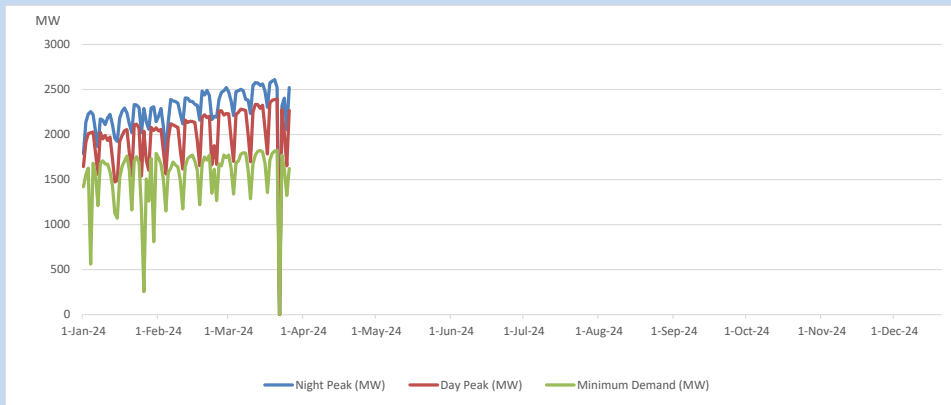
11. Comparison of Total Reservoir Storage Levels with Past Years



12. Variation of Major Hydro Reservoir Levels in the current year (GWh)



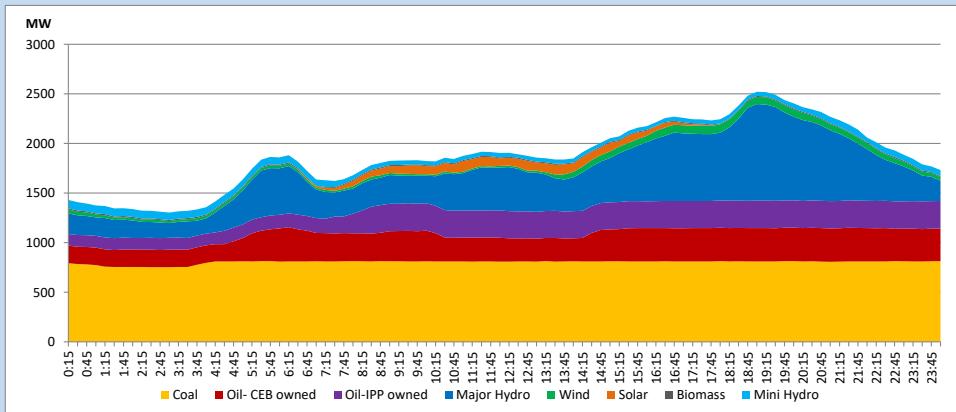
13. Variation of Demand during the current year



The above figures are excluding contribution from roof top solar, non telemetered solar and mini hydro plants

14. Daily Load Curve

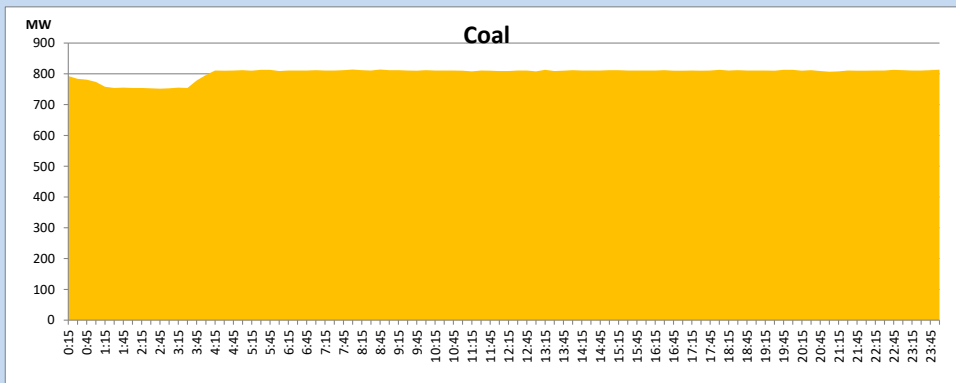
March 25, 2024



Solar and wind data is based on Telemetered Power Stations only

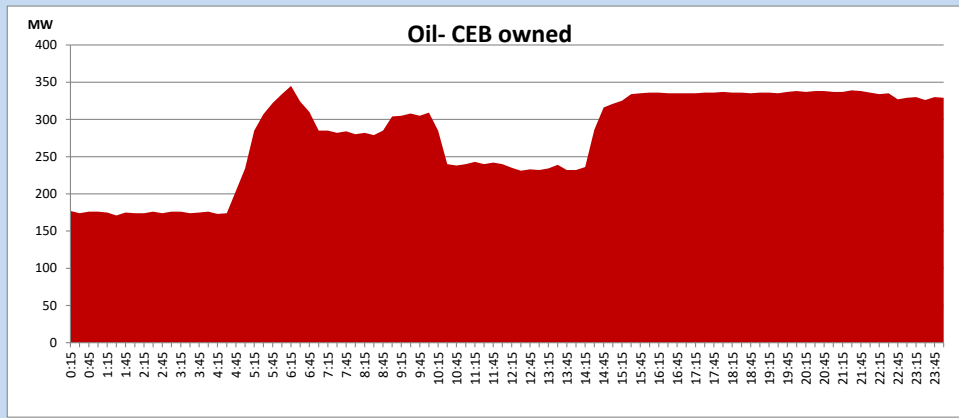
Coal Generation during

March 25, 2024



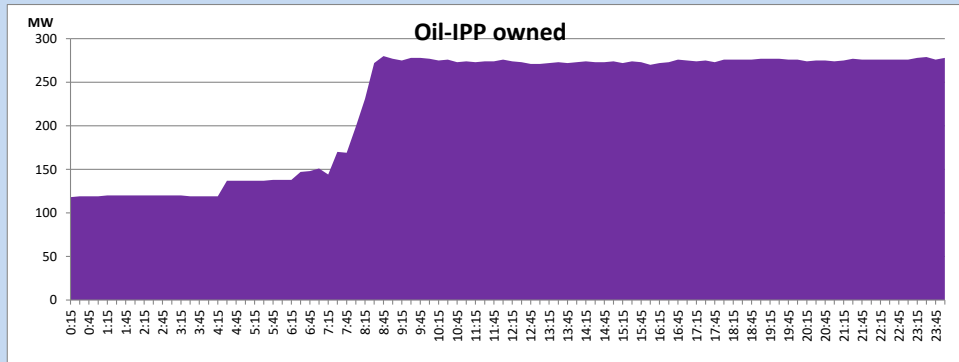
CEB Oil Plant Generation during

March 25, 2024



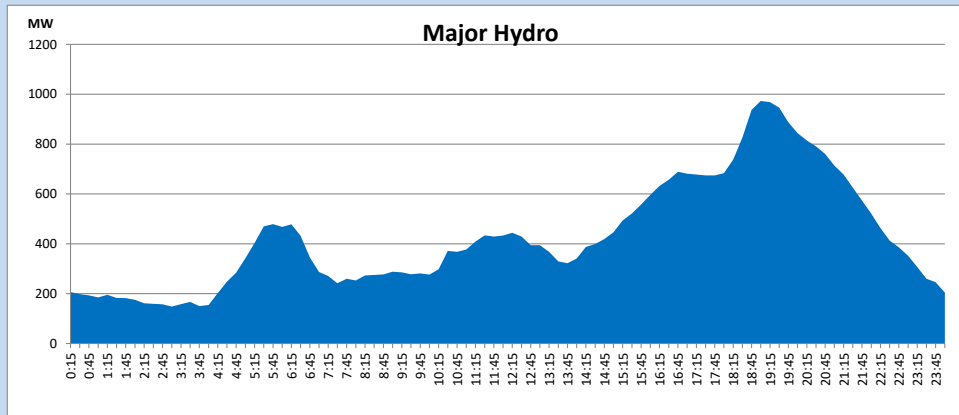
IPP Oil Plant Generation during

March 25, 2024



Major Hydro Generation during

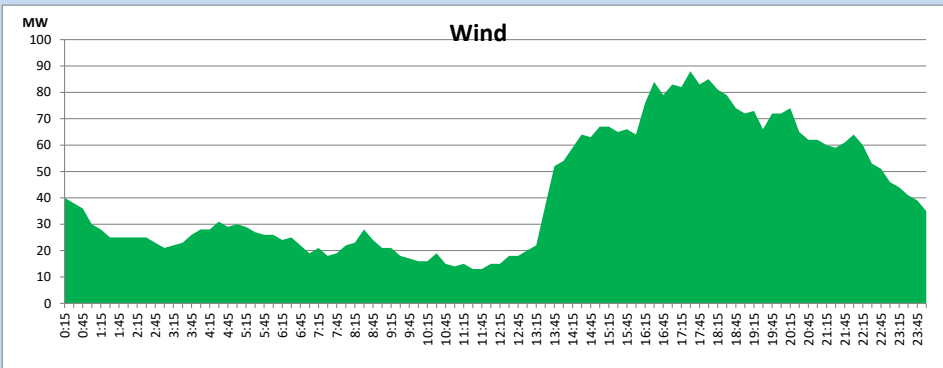
March 25, 2024



Wind Generation during

March 25, 2024

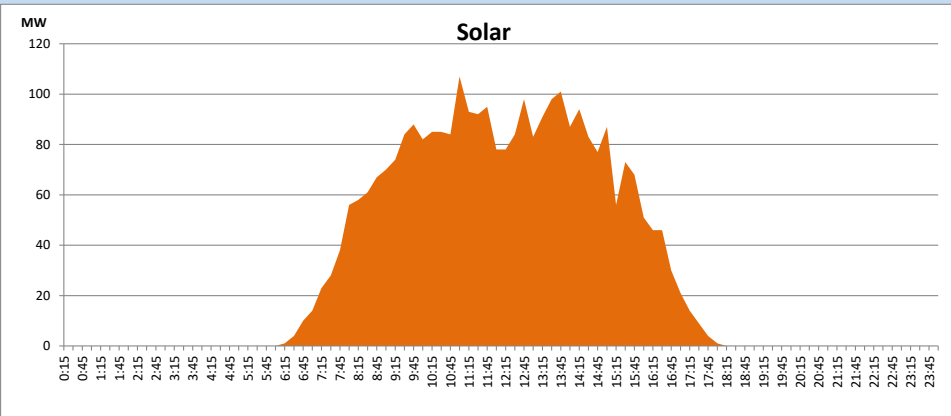
Based on Telemetered Power Stations only



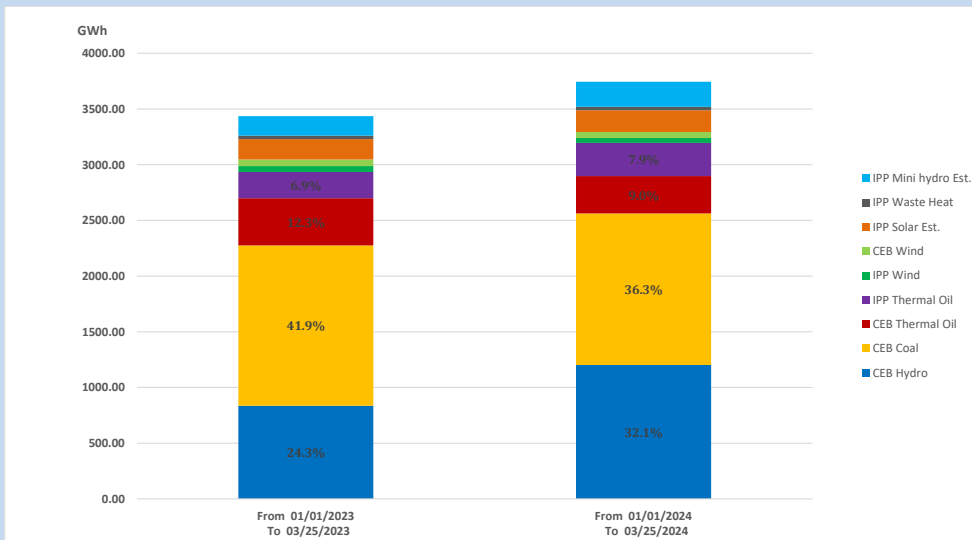
Solar Generation during

March 25, 2024

Based on Telemetered Power Stations only



15. Cumulative Dispatch Comparison with Last Year



Cumulative dispatch
 From 01/01/2023 To 03/25/2023
 From 01/01/2024 To 03/25/2024

3435 GWh
 3745 GWh

The above figures are including contribution from roof top solar, non telemetered solar and mini hydro plants)
 Unserved energy due to power cuts has been excluded in 2023

Thermal Plant Fuel types

Table 08

Power Station	Primary Fuel
CEB Thermal	
Sapugaskanda 1	Heavy Fuel
Sapugaskanda 2	Heavy Fuel
Kelanitissa Small Gas Turbines	Auto Diesel
GT 7 - Kelanitissa	Auto Diesel
Kelanitissa CCY	Naphtha or Diesel
Lakvijaya 1	Coal
Lakvijaya 2	Coal
Lakvijaya 3	Coal
Uthuru Janani	Heavy Fuel
Barge CEB	Heavy Fuel
KCCPS -2	Auto Diesel

Power Station	Primary Fuel
Private Thermal	
West Coast	Auto Diesel / Heavy Fuel

Major Incidents reported during the day

March 25, 2024

1) Nil.