

# Generation and Reservoirs Statistics

March 24, 2024



PUBLIC UTILITIES COMMISSION OF SRI LANKA

## 1. Daily Generation Mix in MWh

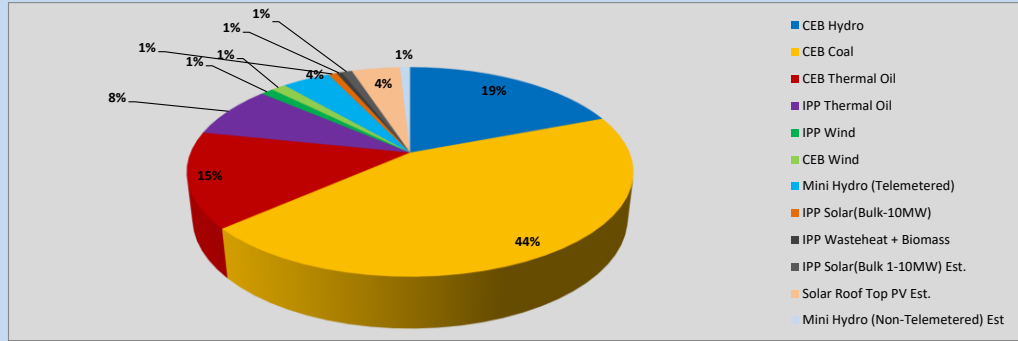


Table 01

	Generation (MWh)
CEB Hydro	7,661
CEB Coal	17,696
CEB Thermal Oil	5,892
IPP Thermal Oil	3,207
IPP Wind	436
CEB Wind	508
Mini Hydro (Telemetered)	1,656
IPP Solar (Bulk)	296
IPP Waste heat + Biomass	179
<b>Total Generation (Excluding estimated figures)</b>	<b>37,531</b>
* Estimated unserved energy	0
* Estimated Mini Hydro (Non telemetered)	353
* Estimated IPP Solar PV (Bulk 1-10MW)	365
* Estimated Solar Roof Top PV	1670
<b>Total Generation (Including estimated figures)</b>	<b>39,919</b>

\* Estimated figures of CEB generation report

Table 02

	Installed Capacity (MW)
CEB Hydro	1644
CEB Coal	810
CEB Thermal Oil	773.1
IPP Thermal Oil (West Coast)	270
IPP Wind	163
CEB Wind	100
Mini Hydro	422
IPP Waste heat + Biomass	54
IPP Solar	137
Rooftop Solar (Ordinary)	293
Rooftop Solar (LT Bulk)	272
Rooftop Solar (HT Bulk)	74

Data Source - Monthly Review Report [Nov-2023]

## 2. Cumulative Dispatch

Following data excludes the contribution from roof top solar, non telemetered solar and mini hydro plants

Table 03 - Current Month

Category	Dispatch (GWh)	
CEB Hydro	253	22.44%
CEB Coal	461	40.91%
CEB Thermal Oil	171	15.18%
IPP Thermal	123	10.92%
SPP Wind	8	0.73%
CEB Wind	9	0.78%
Mini Hydro *	34	2.99%
IPP Solar *	60	5.30%
IPP Waste heat + BMP	8	0.75%
<b>Total</b>	<b>1,126</b>	

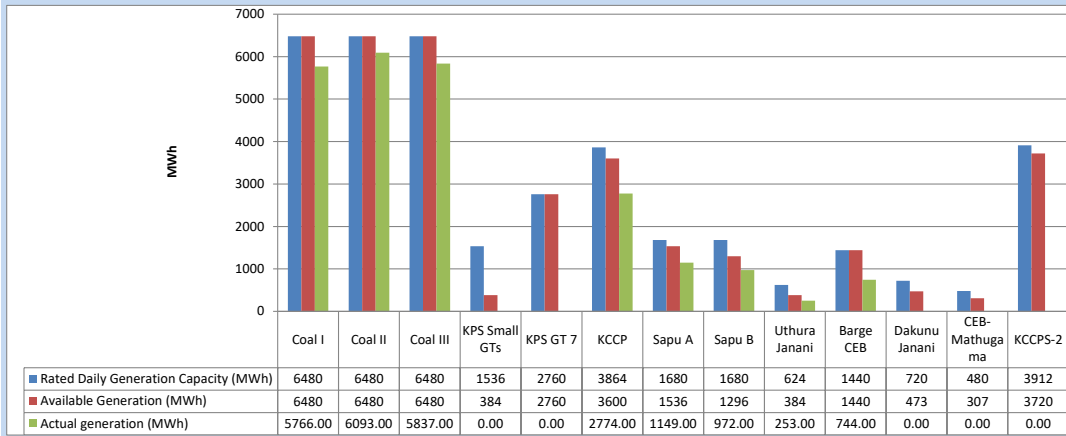
Table 04 - Current Year

Category	Dispatch (GWh)	
CEB Hydro	1,191	32.21%
CEB Coal	1,341	36.26%
CEB Thermal Oil	330	8.91%
IPP Thermal	292	7.89%
SPP Wind	44	1.19%
CEB Wind	53	1.43%
Mini Hydro *	224	6.07%
IPP Solar *	192	5.19%
IPP Waste heat	31	0.83%
<b>Total</b>	<b>3,698</b>	

\*Including estimated contribution from non telemetered plants

### 3. CEB owned Thermal Plant Dispatch

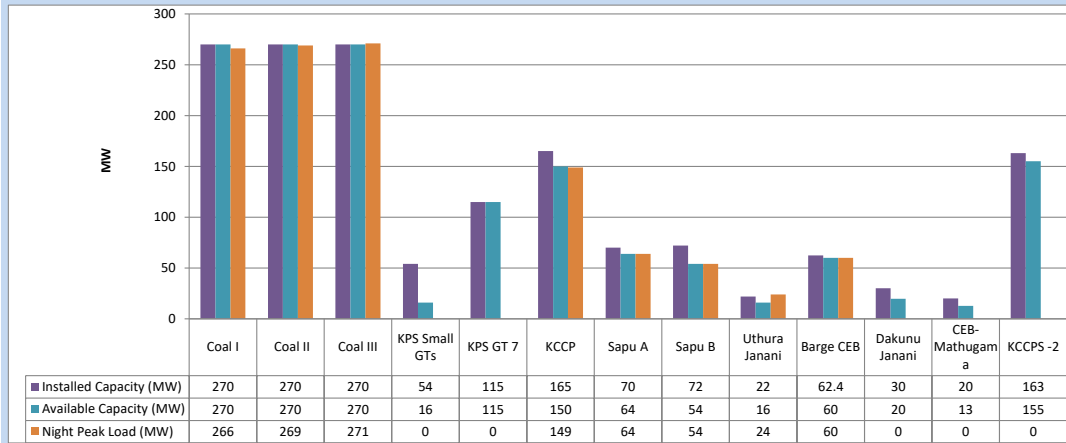
March 24, 2024



Available Generation is estimated based on plant availability at 6.00am on

March 25, 2024

### 4. CEB owned Thermal Plant Loading at the Night Peak

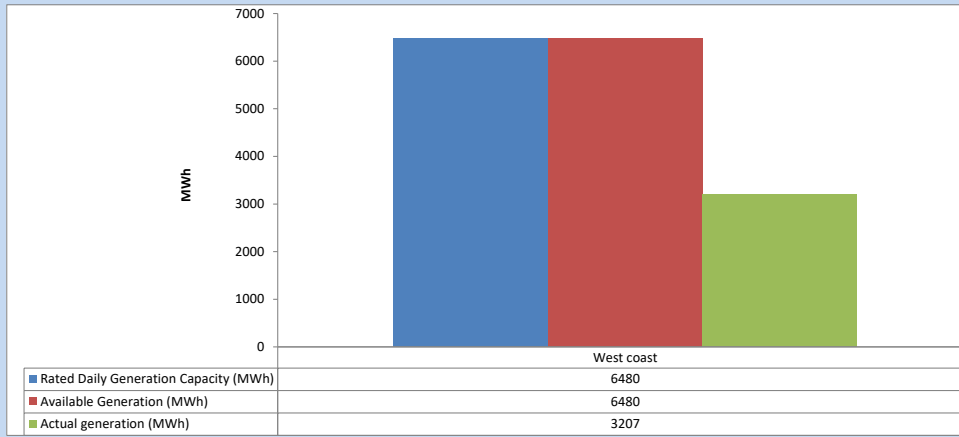


Plant availability is recorded at 6.00 am on

March 25, 2024

### 5. IPP owned Thermal Plant Dispatch

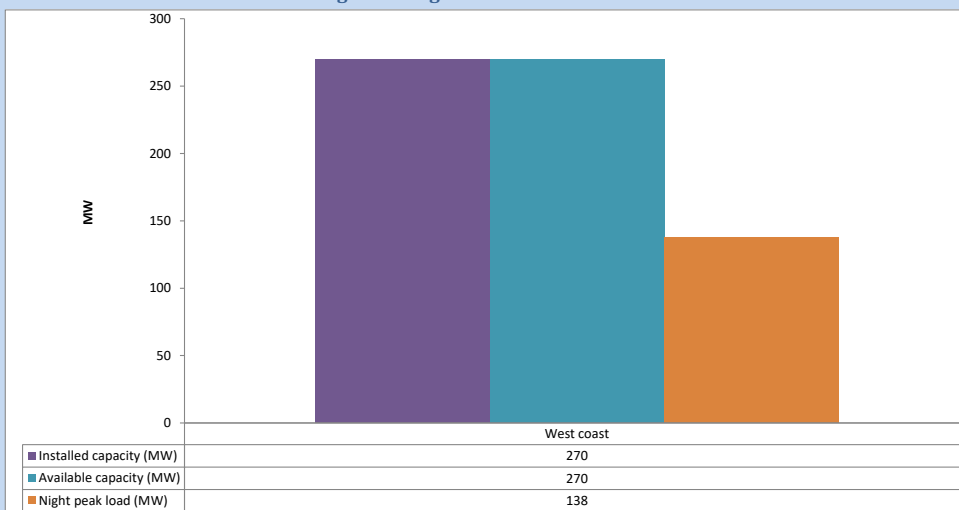
March 24, 2024



Available Generation is estimated based on plant availability at 6.00am on

March 25, 2024

### 6. IPP owned Thermal Plant Loading at the Night Peak

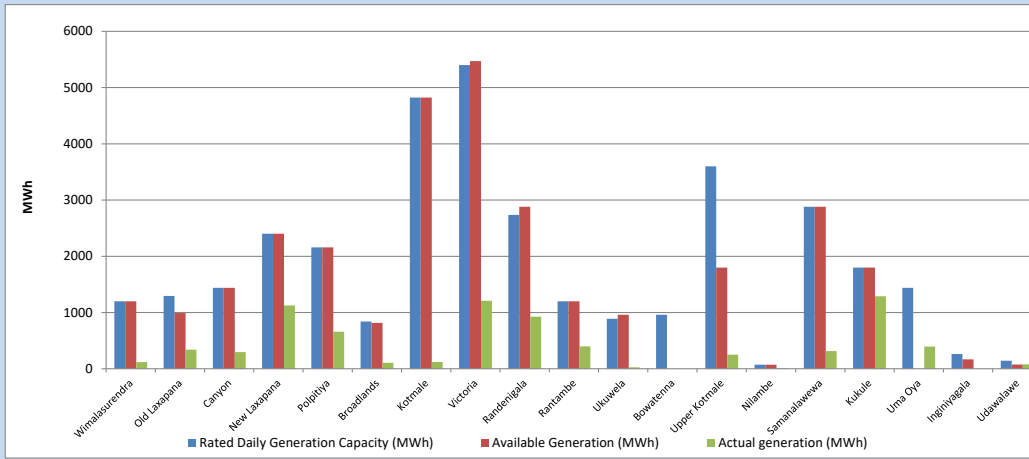


Plant availability is recorded at 6.00 am on

March 25, 2024

## 7. Major Hydro Plant Dispatch

March 24, 2024

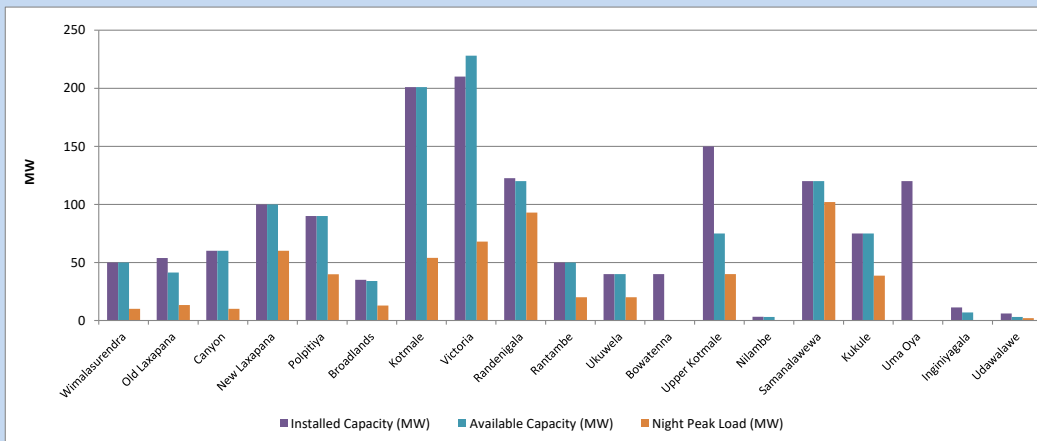


Available Generation is estimated based on plant availability at 6.00am on  
Broadlands power plant is operating in the Commissioning Stage

March 25, 2024

## 8. Major Hydro Plant Loading at Night Peak

March 24, 2024



Plant availability is recorded at 6.00 am on  
Broadlands power plant is operating in the Commissioning Stage

March 25, 2024

## 9. Summary of Major Plant performance

Table 05

Plant	Maximum Available Total Capacity	Plant Availability	Night peak Load	Plant Dispatch
	(MW)	(MW)	(MW)	(MWh)
Wimalasurendra	50	50	10	117
Old Laxapana	54	41	13	340
Canyon	60	60	10	295
New Laxapana	100	100	60	1,126
Polpitiya	90	90	40	660
Broadlands	35	34	13	107
Kotmale	201	201	54	120
Victoria	210	228	68	1,210
Randenigala	123	120	93	927
Rantambe	50	50	20	399
Ukuwela	40	40	20	27
Bowatenna	40	0	0	0
Upper Kotmale	150	75	40	251
Nilambe	3	3	0	7
Samanalawewa	120	120	102	315
Kukule	75	75	39	1,289
Uma Oya (Testing )	120	0	0	394
Inginiyagala	11	7	0	0
Udawalawe	6	3	2	77
Puttalam Coal I	270	270	266	5,766
Puttalam Coal II	270	270	269	6,093
Puttalam Coal III	270	270	271	5,837
KPS Small GTs	54	16	0	0
KPS GT 7	115	115	0	0
KCCP	165	150	149	2,774
Sapugaskanda A	70	64	64	1,149
Sapugaskanda B	72	54	54	972
Uthura Janani	22	16	24	253
Barge CEB	62	60	60	744
CEB-Hambantota	30	20	0	0
CEB-Mathugama	20	13	0	0
ACE Matara	24	0	0	0
Asia Power	50	0	0	0
KCCPS -2	163	155	0	0
West Coast	270	270	138	3,207
Nothern Power	36	0	0	0
ACE Embilipitiya	93	0	0	0
<b>Total</b>	<b>3,594</b>	<b>3,040</b>	<b>2,020</b>	<b>37,531</b>

Note-

Plant availability is the availability recorded at 6 am on

March 25, 2024

Installed Capacity is sourced from CEB Annual Report- 2022

10. Contribution to the Night Peak in MW

March 24, 2024

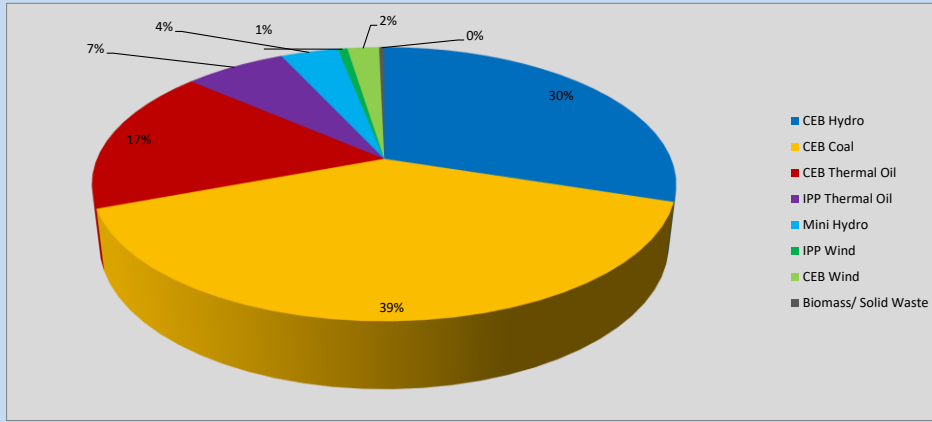


Table 06

CEB Hydro	615	MW
CEB Coal	806	MW
CEB Thermal Oil	351	MW
IPP Thermal Oil	138	MW
Mini Hydro (Telemetered)	78	MW
IPP Wind	13.1	MW
CEB Wind	43.1	MW
Biomass/ Solid Waste	7	MW

Recorded Peak Demand Data

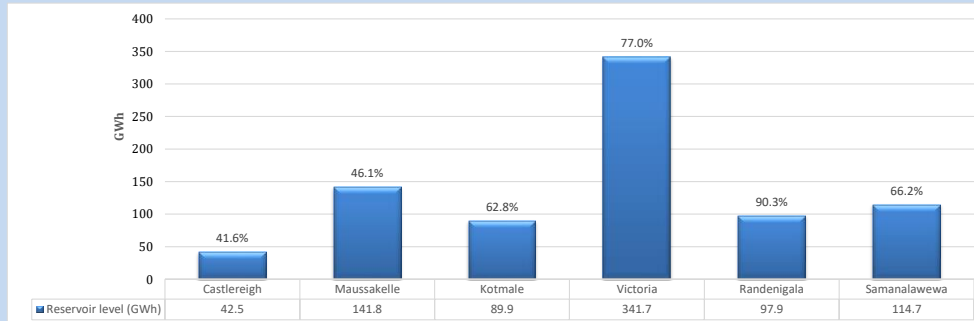
Table 07

Night Peak*	2,051	MW
Day Peak Maximum Demand	1,652	MW
Day Peak Minimum Demand	1,324	MW
Off Peak Minimum Demand	1,472	MW

Above figures are excluding contribution from roof top solar, non telemetered solar and mini hydro plants

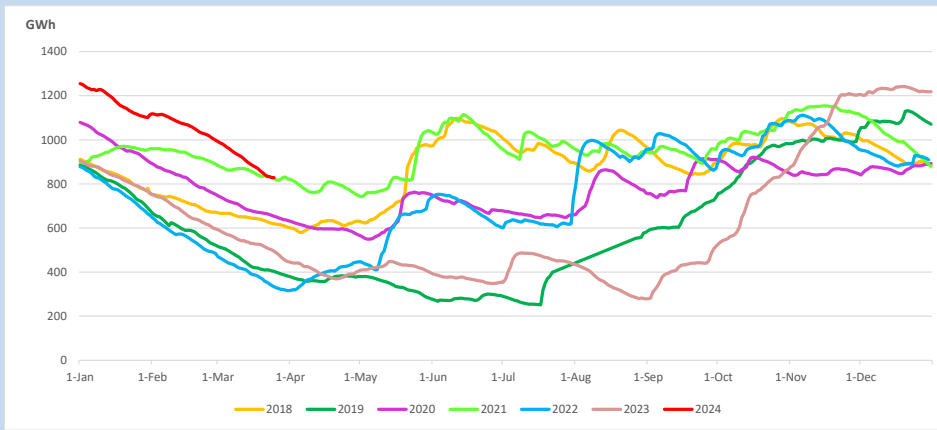
Reservoir Levels -

as at 06.00 Hr on March 25, 2024

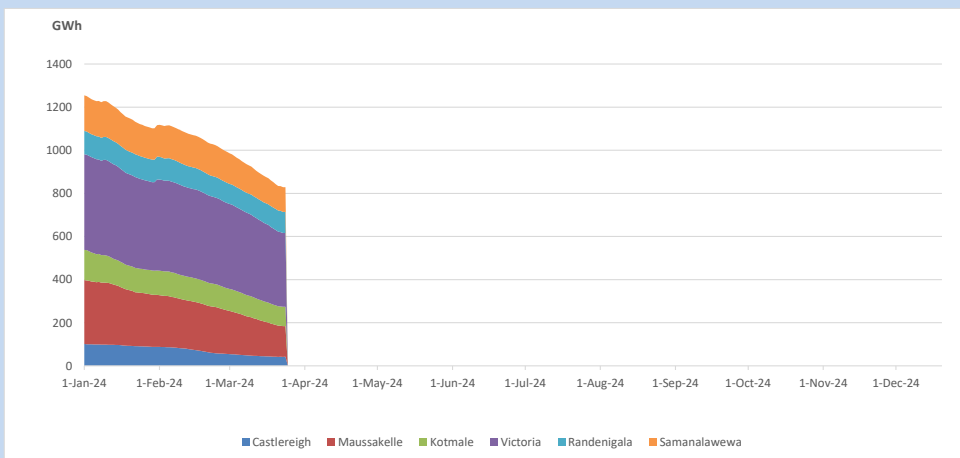


Total Reservoir Level 828.5 GWh  
% of Total capacity 64.8%

### 11. Comparison of Total Reservoir Storage Levels with Past Years

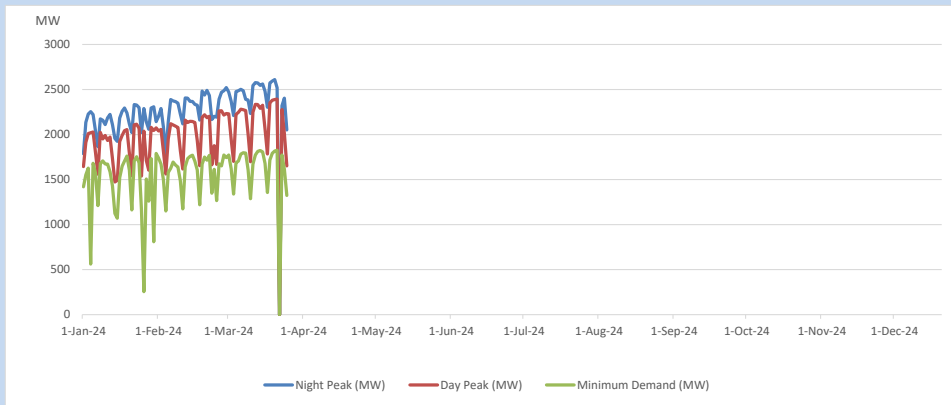


### 12. Variation of Major Hydro Reservoir Levels in the current year (GWh)





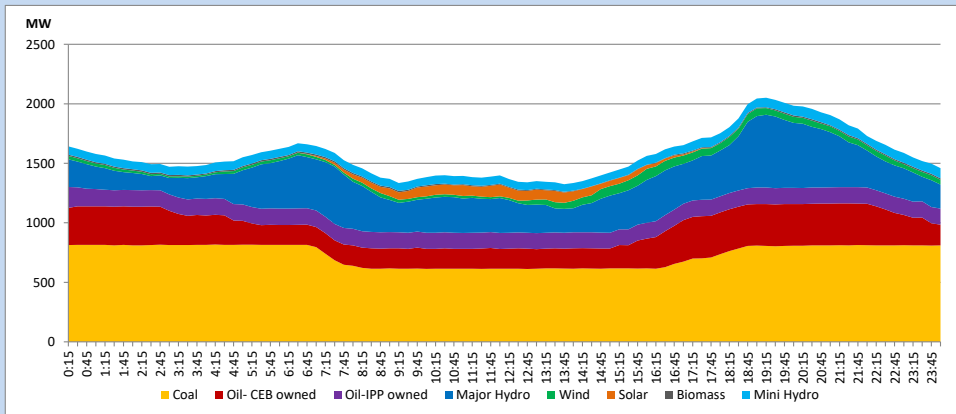
### 13. Variation of Demand during the current year



The above figures are excluding contribution from roof top solar, non telemetered solar and mini hydro plants

### 14. Daily Load Curve

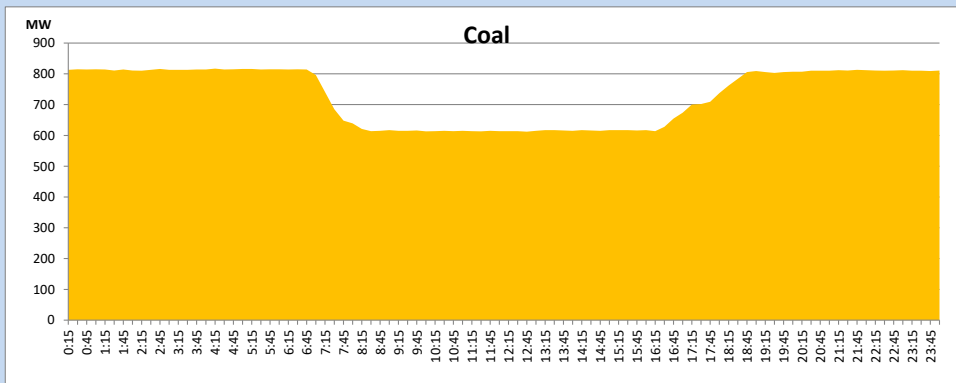
March 24, 2024



Solar and wind data is based on Telemetered Power Stations only

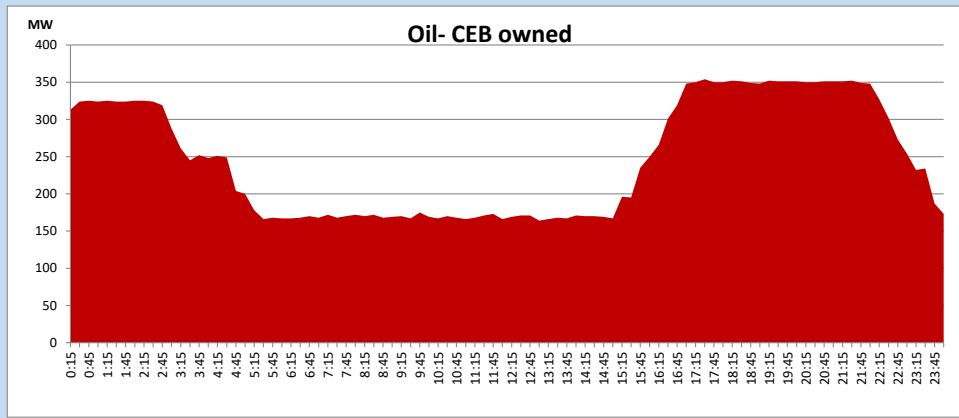
### Coal Generation during

March 24, 2024



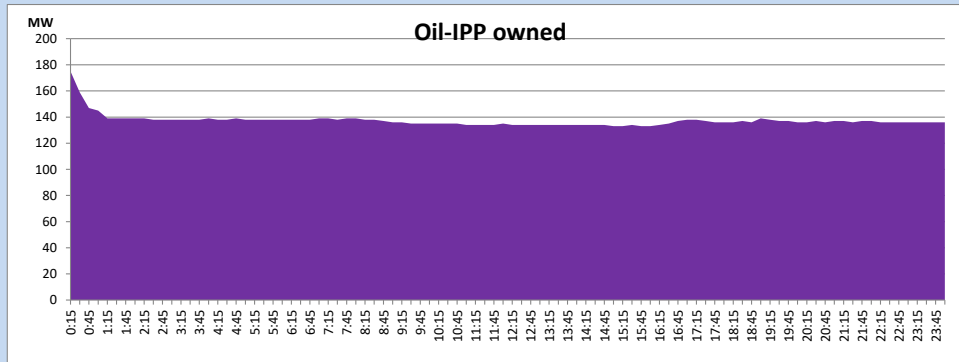
CEB Oil Plant Generation during

March 24, 2024



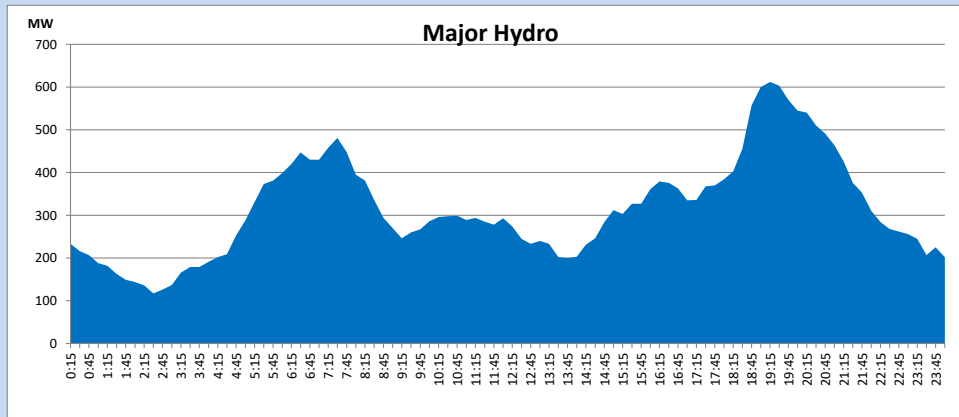
IPP Oil Plant Generation during

March 24, 2024



Major Hydro Generation during

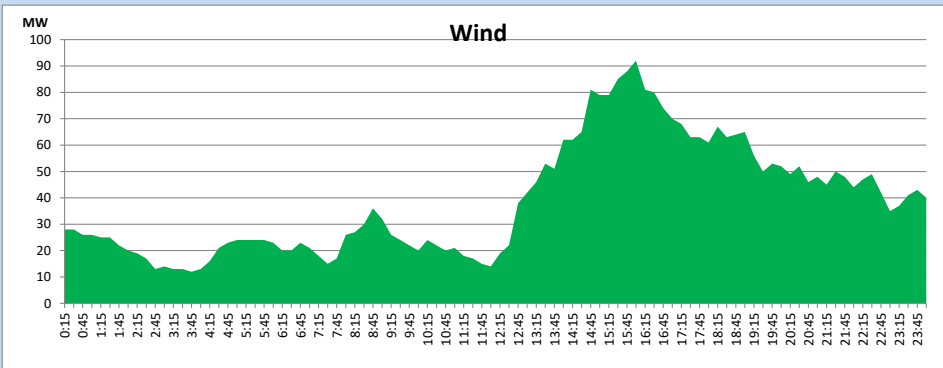
March 24, 2024



### Wind Generation during

March 24, 2024

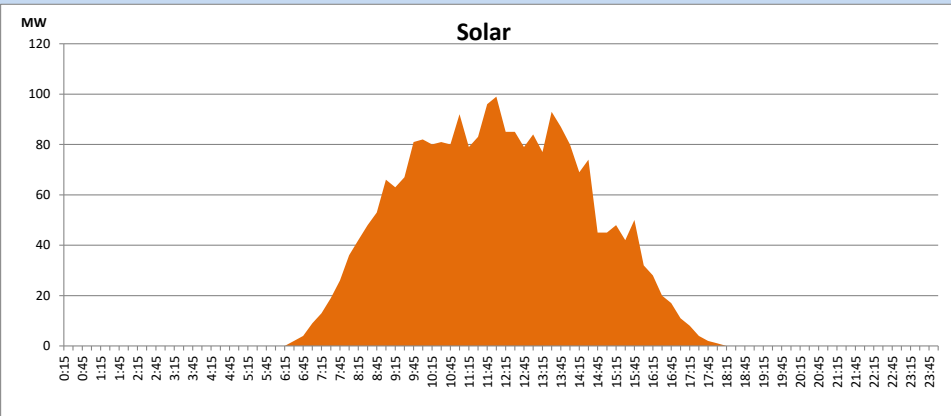
Based on Telemetered Power Stations only



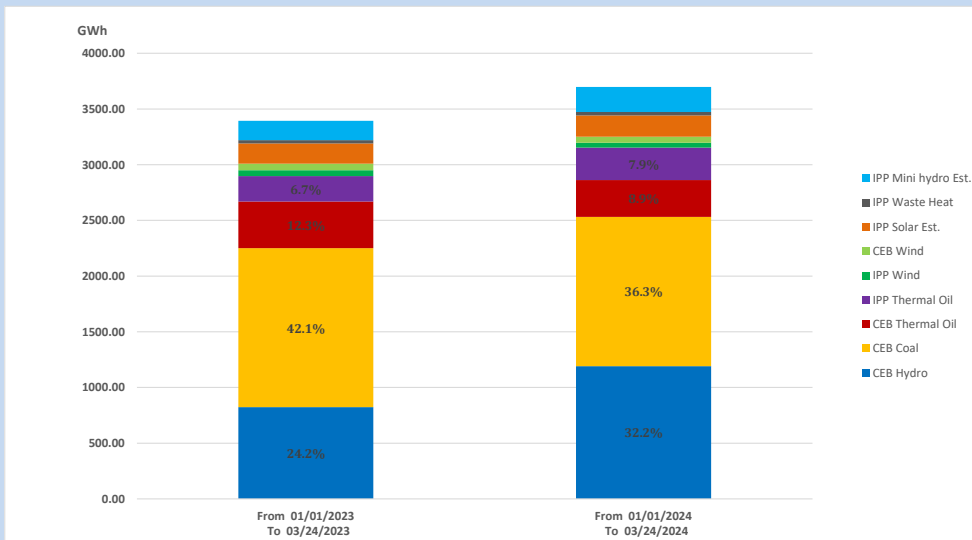
### Solar Generation during

March 24, 2024

Based on Telemetered Power Stations only



### 15. Cumulative Dispatch Comparison with Last Year



Cumulative dispatch  
 From 01/01/2023 To 03/24/2023  
 From 01/01/2024 To 03/24/2024

3394 GWh  
 3698 GWh

The above figures are including contribution from roof top solar, non telemetered solar and mini hydro plants)  
 Unserved energy due to power cuts has been excluded in 2023

Thermal Plant Fuel types

Table 08

Power Station	Primary Fuel
CEB Thermal	
Sapugaskanda 1	Heavy Fuel
Sapugaskanda 2	Heavy Fuel
Kelanitissa Small Gas Turbines	Auto Diesel
GT 7 - Kelanitissa	Auto Diesel
Kelanitissa CCY	Naphtha or Diesel
Lakvijaya 1	Coal
Lakvijaya 2	Coal
Lakvijaya 3	Coal
Uthuru Janani	Heavy Fuel
Barge CEB	Heavy Fuel
KCCPS -2	Auto Diesel

Power Station	Primary Fuel
Private Thermal	
West Coast	Auto Diesel / Heavy Fuel

Major Incidents reported during the day

March 24, 2024

1) Polpitiya unit 01 tripped at 01:30hrs due to a turbine guide bearing oil level low alarm, rejecting 10MW from the system. Polpitiya unit 01 resumed generation at 01:50hrs

2) Kolonnawa - J'pura - Pannipitiya 132kV cct 02 tripped from J'pura & Pannipitiya ends and cct 01 tripped and A/R only from the Pannipitiya end at 19:01hrs due to the operation of distance protection (Both ccts already switched off from Kolonnawa end). The cct 02 is yet to be normalized.