

Generation and Reservoirs Statistics

March 22, 2024



PUBLIC UTILITIES COMMISSION OF SRI LANKA

1. Daily Generation Mix in MWh

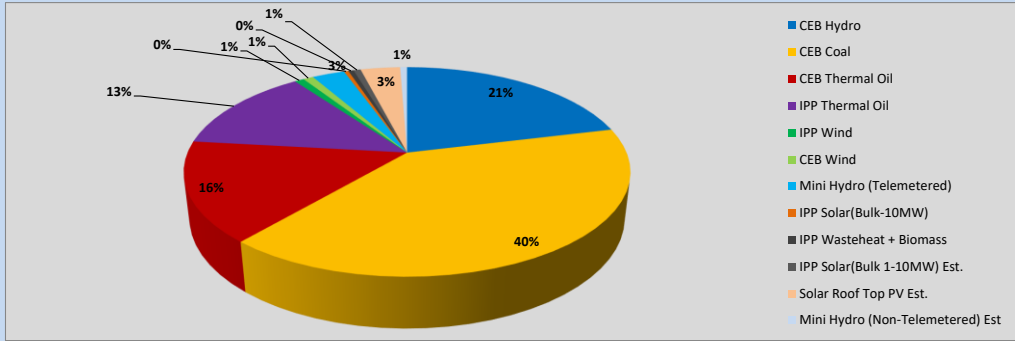


Table 01

	Generation (MWh)
CEB Hydro	10,329
CEB Coal	19,542
CEB Thermal Oil	7,551
IPP Thermal Oil	6,441
IPP Wind	400
CEB Wind	426
Mini Hydro (Telemetered)	1,373
IPP Solar (Bulk)	186
IPP Waste heat + Biomass	223
Total Generation (Excluding estimated figures)	46,471
* Estimated unserved energy	0
* Estimated Mini Hydro (Non telemetered)	293
* Estimated IPP Solar PV (Bulk 1-10MW)	304
* Estimated Solar Roof Top PV	1670
Total Generation (Including estimated figures)	48,738

* Estimated figures of CEB generation report

Table 02

	Installed Capacity (MW)
CEB Hydro	1644
CEB Coal	810
CEB Thermal Oil	773.1
IPP Thermal Oil (West Coast)	270
IPP Wind	163
CEB Wind	100
Mini Hydro	422
IPP Waste heat + Biomass	54
IPP Solar	137
Rooftop Solar (Ordinary)	293
Rooftop Solar (LT Bulk)	272
Rooftop Solar (HT Bulk)	74

Data Source - Monthly Review Report [Nov-2023]

2. Cumulative Dispatch

Following data excludes the contribution from roof top solar, non telemetered solar and mini hydro plants

Table 03 - Current Month

Category	Dispatch (GWh)	
CEB Hydro	249	22.82%
CEB Coal	443	40.56%
CEB Thermal Oil	167	15.30%
IPP Thermal	120	10.99%
SPP Wind	8	0.71%
CEB Wind	8	0.76%
Mini Hydro *	31	2.84%
IPP Solar *	57	5.26%
IPP Waste heat + BMP	8	0.77%
Total	1,092	

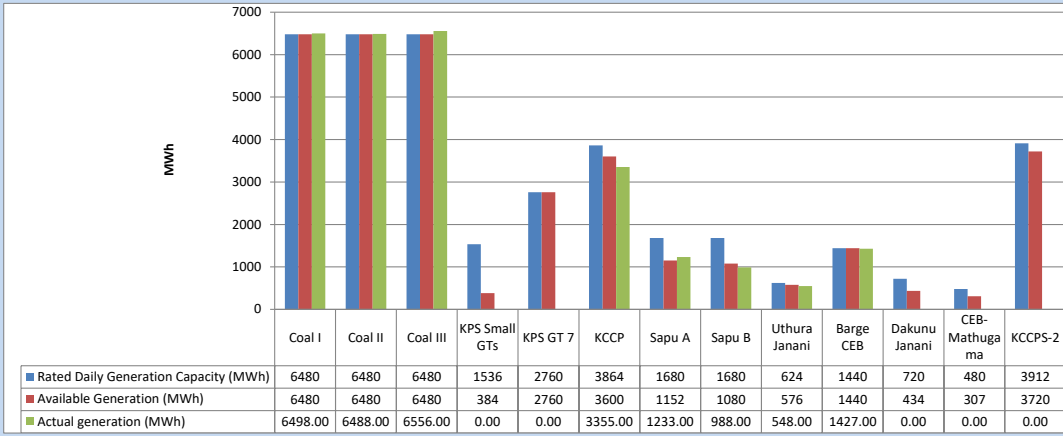
Table 04 - Current Year

Category	Dispatch (GWh)	
CEB Hydro	1,188	32.41%
CEB Coal	1,323	36.11%
CEB Thermal Oil	326	8.89%
IPP Thermal	289	7.88%
SPP Wind	44	1.19%
CEB Wind	52	1.43%
Mini Hydro *	222	6.06%
IPP Solar *	190	5.18%
IPP Waste heat	31	0.84%
Total	3,664	

*Including estimated contribution from non telemetered plants

3. CEB owned Thermal Plant Dispatch

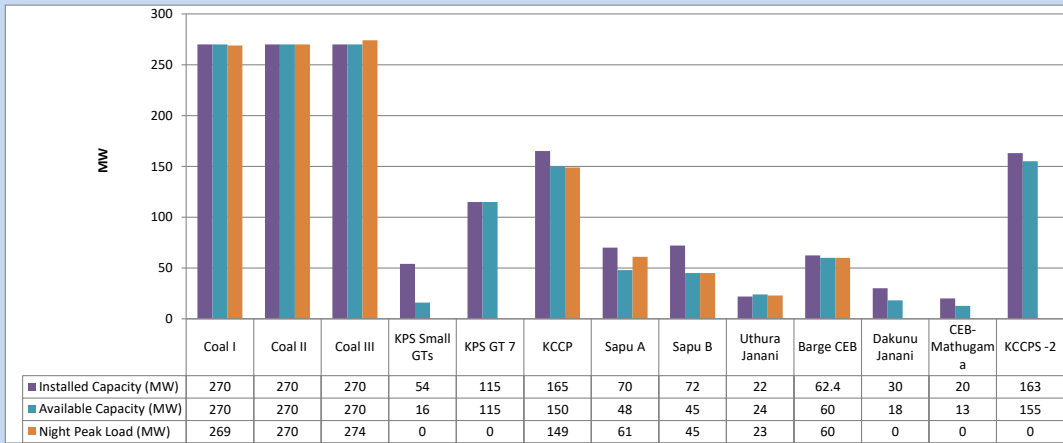
March 22, 2024



Available Generation is estimated based on plant availability at 6.00am on

March 23, 2024

4. CEB owned Thermal Plant Loading at the Night Peak

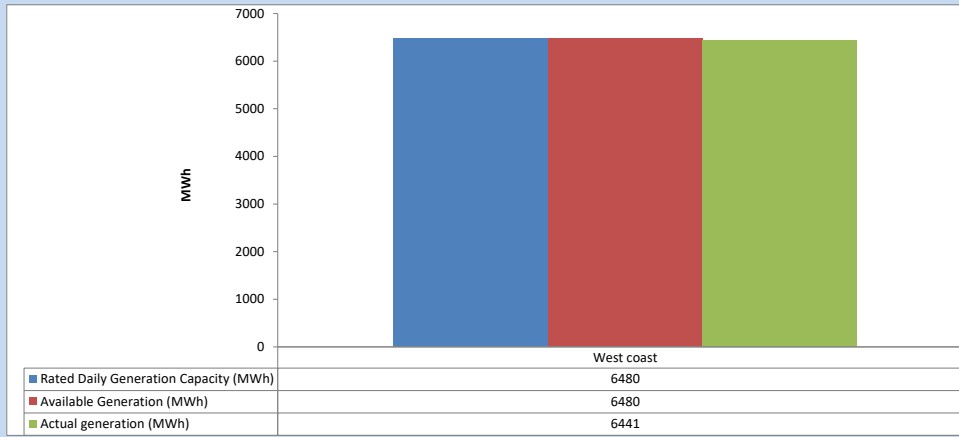


Plant availability is recorded at 6.00 am on

March 23, 2024

5. IPP owned Thermal Plant Dispatch

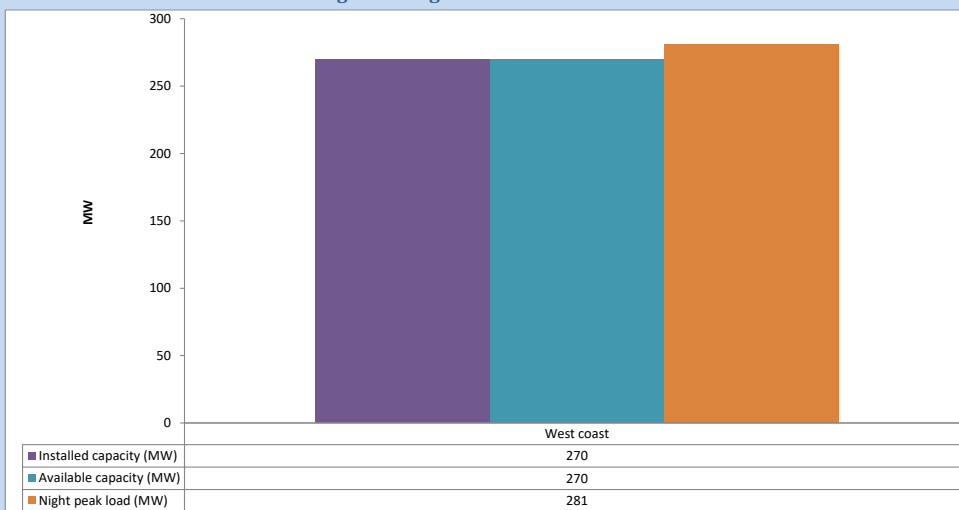
March 22, 2024



Available Generation is estimated based on plant availability at 6.00am on

March 23, 2024

6. IPP owned Thermal Plant Loading at the Night Peak

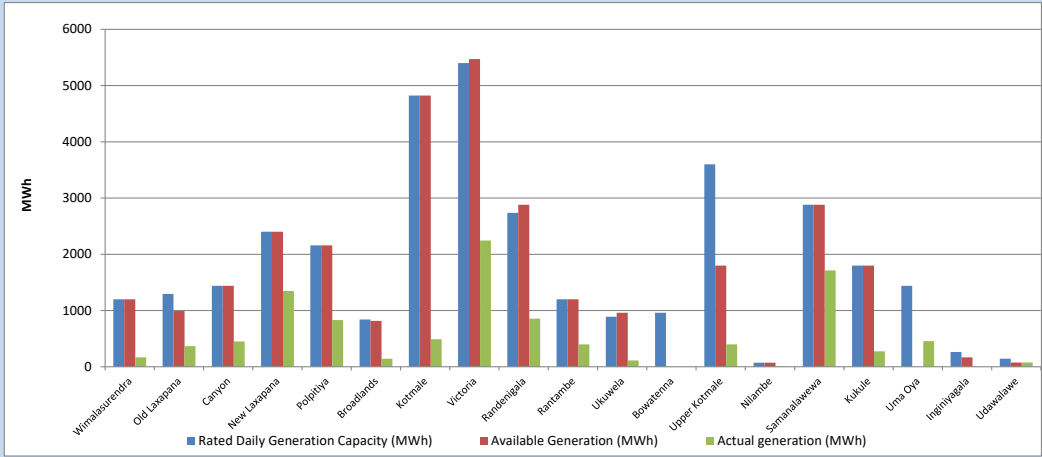


Plant availability is recorded at 6.00 am on

March 23, 2024

7. Major Hydro Plant Dispatch

March 22, 2024

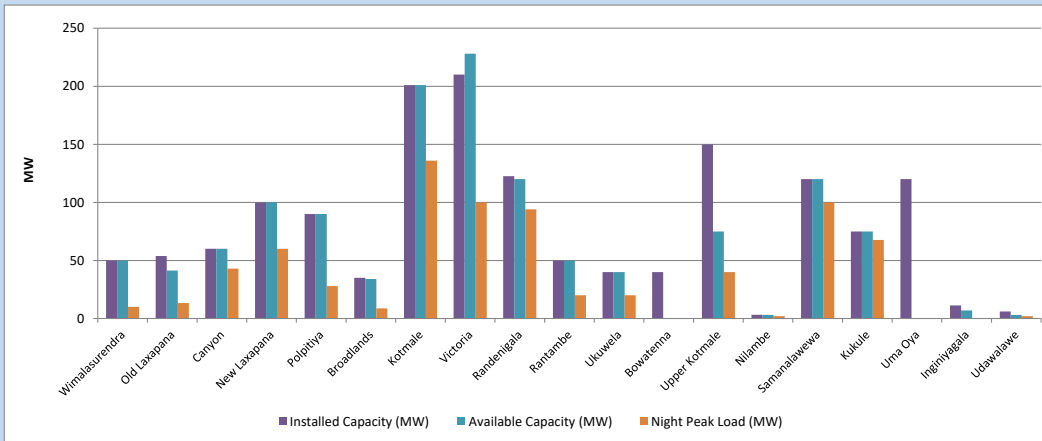


Available Generation is estimated based on plant availability at 6.00am on
Broadlands power plant is operating in the Commissioning Stage

March 23, 2024

8. Major Hydro Plant Loading at Night Peak

March 22, 2024



Plant availability is recorded at 6.00 am on
Broadlands power plant is operating in the Commissioning Stage

March 23, 2024

9. Summary of Major Plant performance

Table 05

Plant	Maximum Available Total Capacity	Plant Availability	Night peak Load	Plant Dispatch
	(MW)	(MW)	(MW)	(MWh)
Wimalasurendra	50	50	10	166
Old Laxapana	54	41	13	366
Canyon	60	60	43	450
New Laxapana	100	100	60	1,348
Polpitiya	90	90	28	830
Broadlands	35	34	9	144
Kotmale	201	201	136	490
Victoria	210	228	100	2,246
Randenigala	123	120	94	857
Rantambe	50	50	20	398
Ukuwela	40	40	20	112
Bowatenna	40	0	0	0
Upper Kotmale	150	75	40	398
Nilambe	3	3	2	8
Samanalawewa	120	120	100	1,712
Kukule	75	75	68	274
Uma Oya (Testing)	120	0	0	456
Inginiyagala	11	7	0	0
Udawalawe	6	3	2	74
Puttalam Coal I	270	270	269	6,498
Puttalam Coal II	270	270	270	6,488
Puttalam Coal III	270	270	274	6,556
KPS Small GTs	54	16	0	0
KPS GT 7	115	115	0	0
KCCP	165	150	149	3,355
Sapugaskanda A	70	48	61	1,233
Sapugaskanda B	72	45	45	988
Uthura Janani	22	24	23	548
Barge CEB	62	60	60	1,427
CEB-Hambantota	30	18	0	0
CEB-Mathugama	20	13	0	0
ACE Matara	24	0	0	0
Asia Power	50	0	0	0
KCCPS -2	163	155	0	0
West Coast	270	270	281	6,441
Nothern Power	36	0	0	0
ACE Embilipitiya	93	0	0	0
Total	3,594	3,021	2,289	46,471

Note-

Plant availability is the availability recorded at 6 am on

March 23, 2024

Installed Capacity is sourced from CEB Annual Report- 2022

10. Contribution to the Night Peak in MW

March 22, 2024

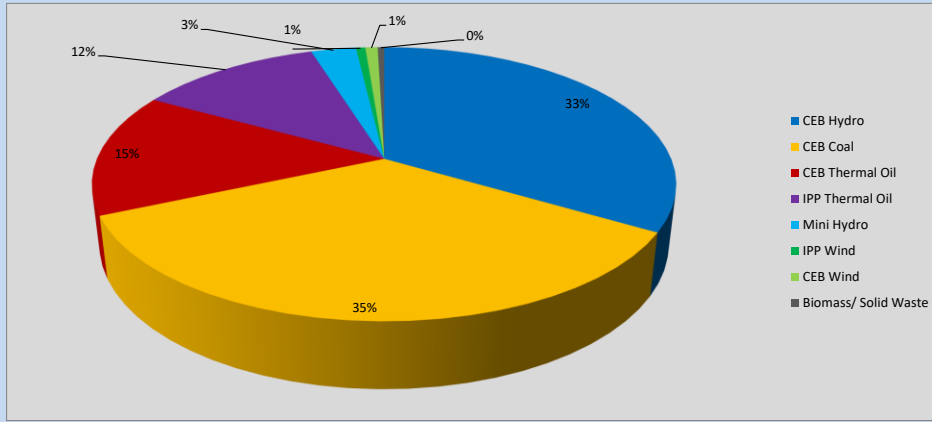


Table 06

CEB Hydro	776	MW
CEB Coal	813	MW
CEB Thermal Oil	338	MW
IPP Thermal Oil	281	MW
Mini Hydro (Telemetered)	69	MW
IPP Wind	14.4	MW
CEB Wind	19	MW
Biomass/ Solid Waste	10	MW

Recorded Peak Demand Data

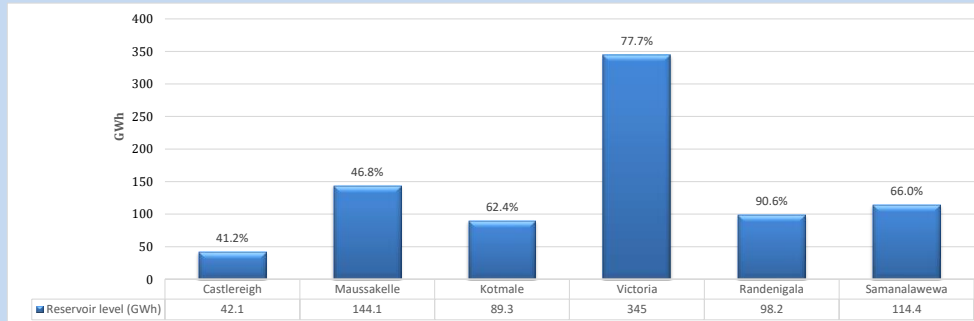
Table 07

Night Peak*	2,320	MW
Day Peak Maximum Demand	2,277	MW
Day Peak Minimum Demand	1,773	MW
Off Peak Minimum Demand	1,549	MW

Above figures are excluding contribution from roof top solar, non telemetered solar and mini hydro plants

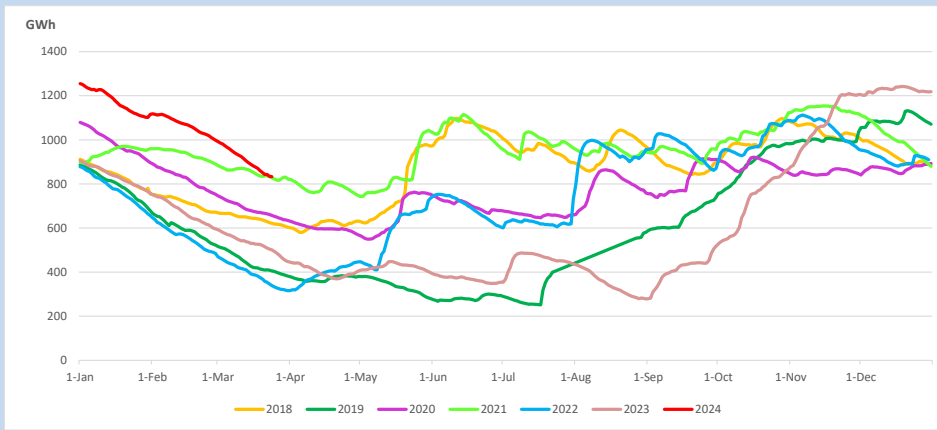
Reservoir Levels -

as at 06.00 Hr on March 23, 2024

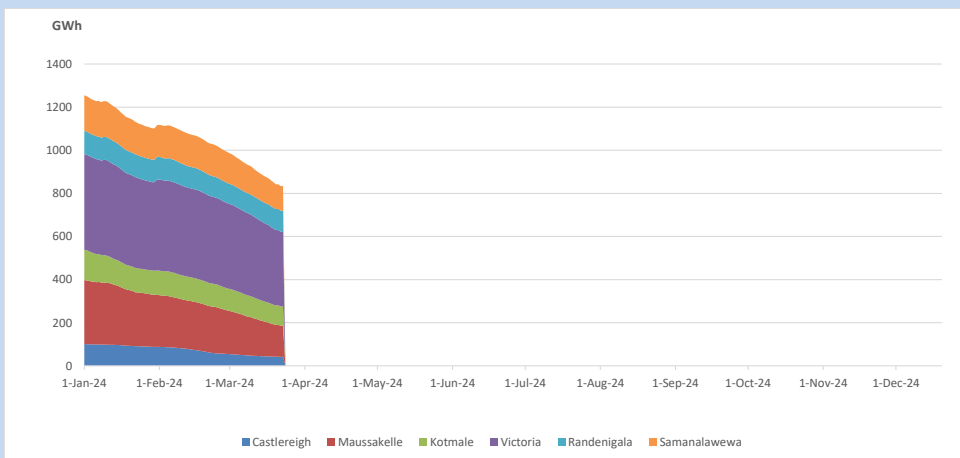


Total Reservoir Level 833.1 GWh
% of Total capacity 65.1%

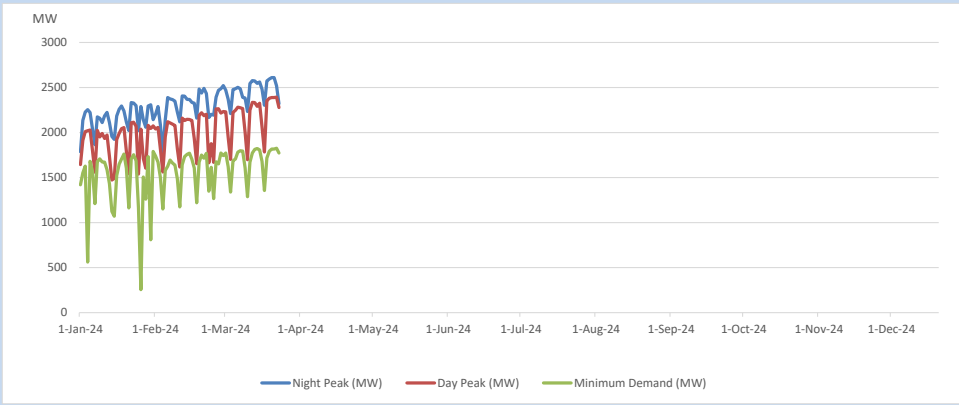
11. Comparison of Total Reservoir Storage Levels with Past Years



12. Variation of Major Hydro Reservoir Levels in the current year (GWh)



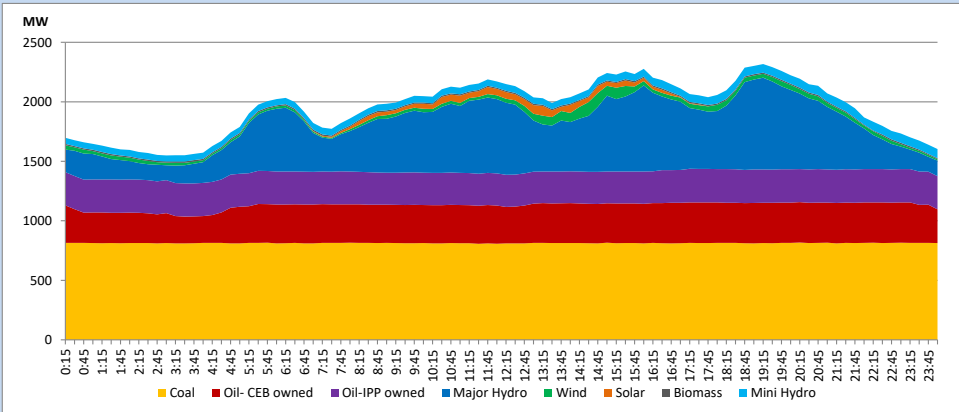
13. Variation of Demand during the current year



The above figures are excluding contribution from roof top solar, non telemetered solar and mini hydro plants

14. Daily Load Curve

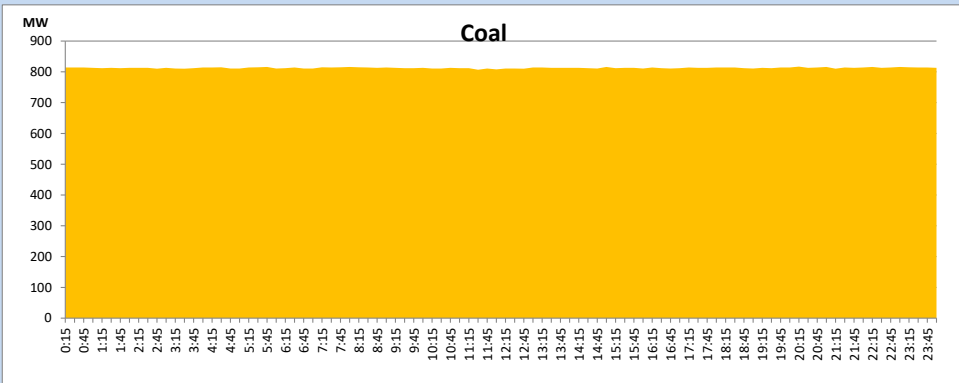
March 22, 2024



Solar and wind data is based on Telemetered Power Stations only

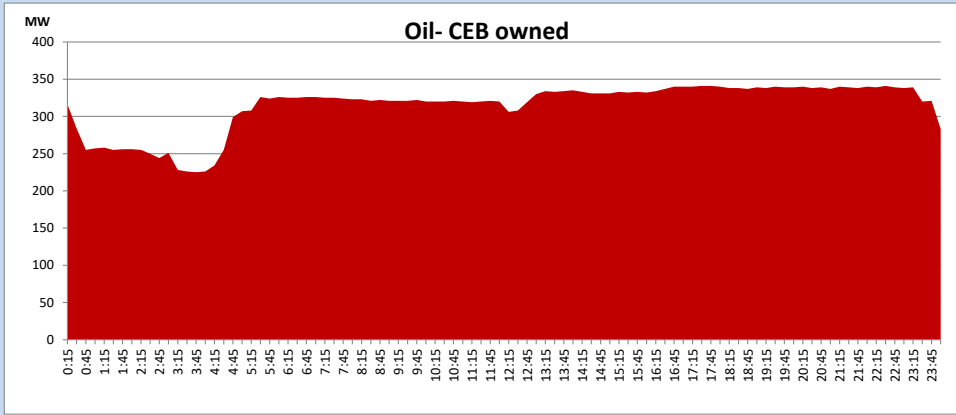
Coal Generation during

March 22, 2024



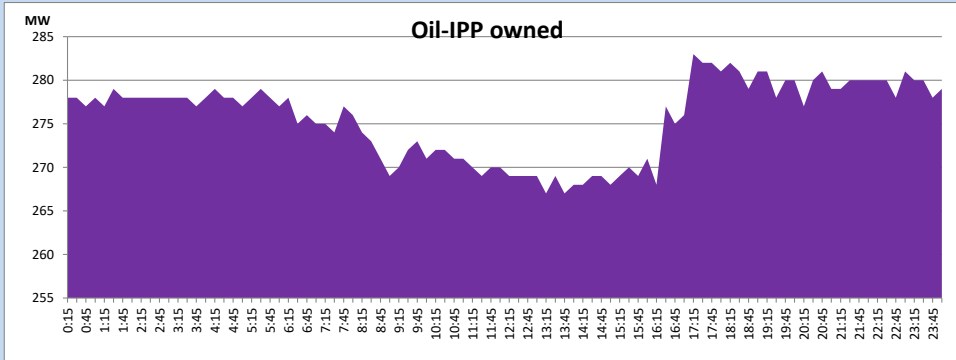
CEB Oil Plant Generation during

March 22, 2024



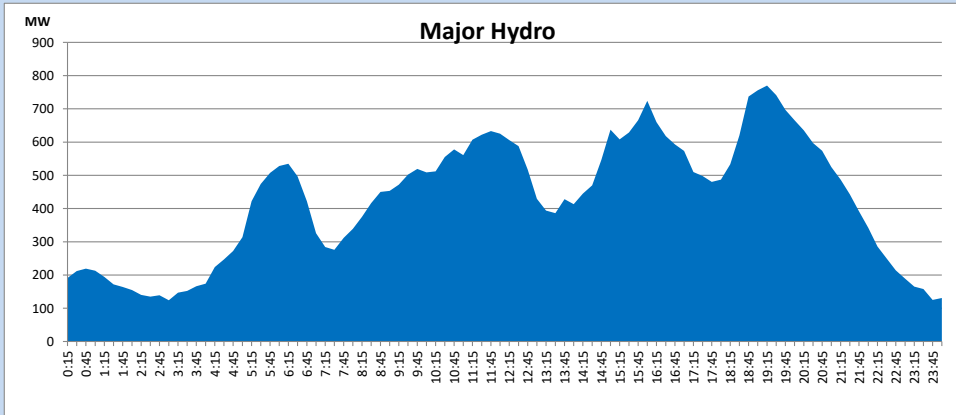
IPP Oil Plant Generation during

March 22, 2024



Major Hydro Generation during

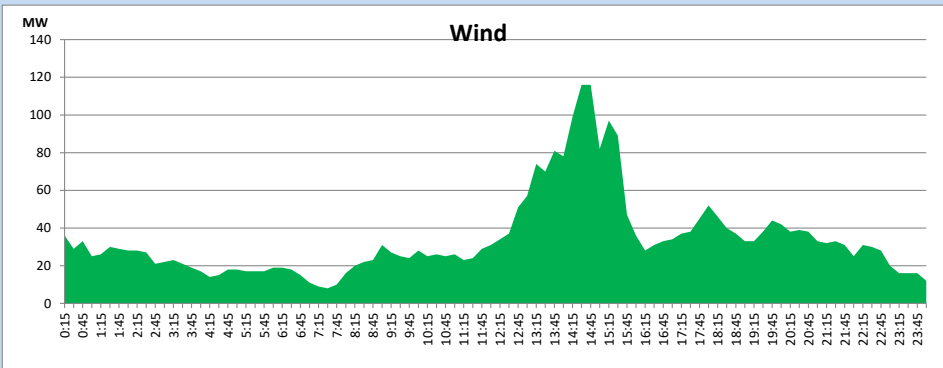
March 22, 2024



Wind Generation during

March 22, 2024

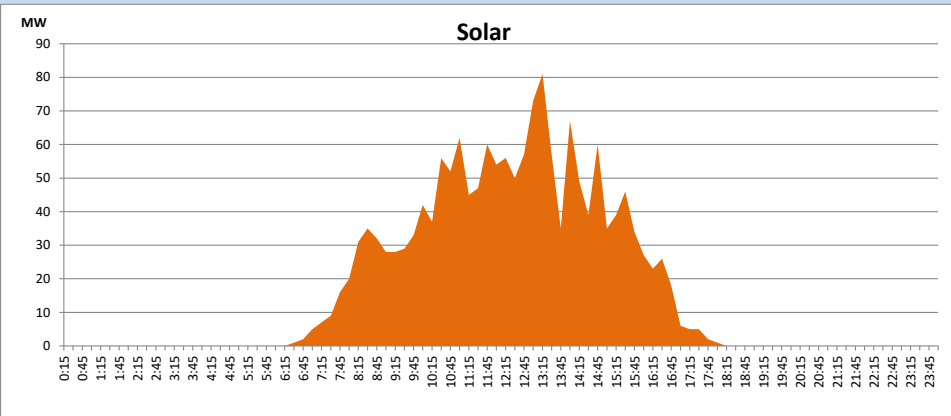
Based on Telemetered Power Stations only



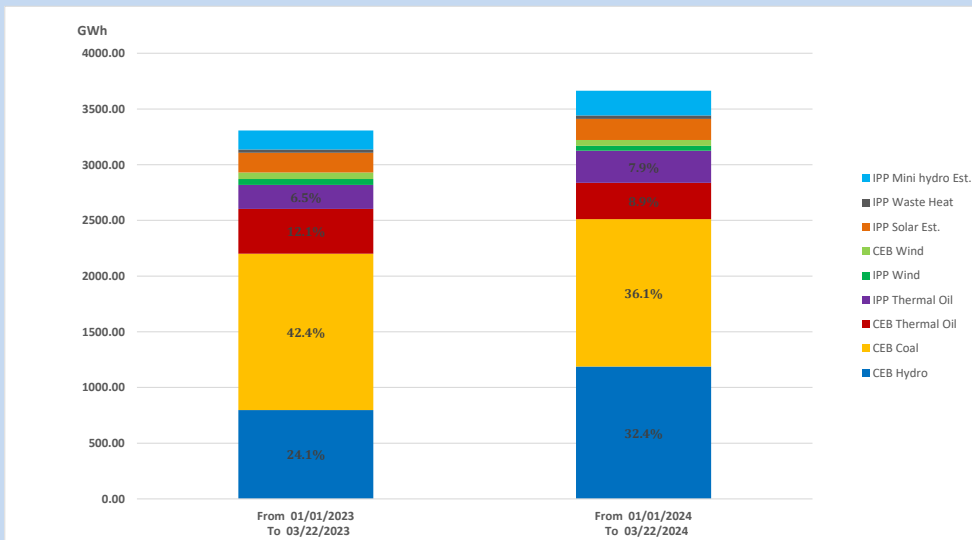
Solar Generation during

March 22, 2024

Based on Telemetered Power Stations only



15. Cumulative Dispatch Comparison with Last Year



Cumulative dispatch
 From 01/01/2023 To 03/22/2023
 From 01/01/2024 To 03/22/2024

3307 GWh
 3664 GWh

The above figures are including contribution from roof top solar, non telemetered solar and mini hydro plants)
 Unserved energy due to power cuts has been excluded in 2023

Thermal Plant Fuel types

Table 08

Power Station	Primary Fuel
CEB Thermal	
Sapugaskanda 1	Heavy Fuel
Sapugaskanda 2	Heavy Fuel
Kelanitissa Small Gas Turbines	Auto Diesel
GT 7 - Kelanitissa	Auto Diesel
Kelanitissa CCY	Naphtha or Diesel
Lakvijaya 1	Coal
Lakvijaya 2	Coal
Lakvijaya 3	Coal
Uthuru Janani	Heavy Fuel
Barge CEB	Heavy Fuel
KCCPS -2	Auto Diesel

Power Station	Primary Fuel
Private Thermal	
West Coast	Auto Diesel / Heavy Fuel

Major Incidents reported during the day

March 22, 2024

- 1) Hambanthota-New Polpitiya 220kV both ccts tripped & A/R from both ends at 16:09hrs due to the operation of distance protection.