

# Generation and Reservoirs Statistics

March 17, 2024



PUBLIC UTILITIES COMMISSION OF SRI LANKA

## 1. Daily Generation Mix in MWh

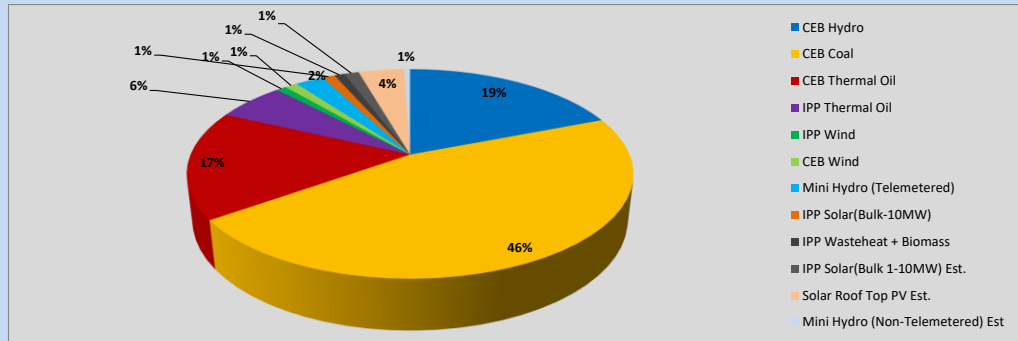


Table 01

	Generation (MWh)
CEB Hydro	8,068
CEB Coal	19,476
CEB Thermal Oil	7,100
IPP Thermal Oil	2,509
IPP Wind	370
CEB Wind	466
Mini Hydro (Telemetered)	1,032
IPP Solar (Bulk)	454
IPP Waste heat + Biomass	369
<b>Total Generation (Excluding estimated figures)</b>	<b>39,844</b>
* Estimated unserved energy	0
* Estimated Mini Hydro (Non telemetered)	220
* Estimated IPP Solar PV (Bulk 1-10MW)	537
* Estimated Solar Roof Top PV	1670
<b>Total Generation (Including estimated figures)</b>	<b>42,271</b>

\* Estimated figures of CEB generation report

Table 02

	Installed Capacity (MW)
CEB Hydro	1644
CEB Coal	810
CEB Thermal Oil	773.1
IPP Thermal Oil (West Coast )	270
IPP Wind	163
CEB Wind	100
Mini Hydro	422
IPP Waste heat + Biomass	54
IPP Solar	137
Rooftop Solar (Ordinary)	293
Rooftop Solar (LT Bulk)	272
Rooftop Solar (HT Bulk)	74

Data Source - Monthly Review Report [Nov-2023]

## 2. Cumulative Dispatch

Following data excludes the contribution from roof top solar, non telemetered solar and mini hydro plants

Table 03 - Current Month

Category	Dispatch (GWh)	
CEB Hydro	178	22.49%
CEB Coal	326	41.12%
CEB Thermal Oil	121	15.29%
IPP Thermal	83	10.49%
SPP Wind	5	0.68%
CEB Wind	6	0.75%
Mini Hydro *	24	2.97%
IPP Solar *	43	5.40%
IPP Waste heat + BMP	6	0.82%
<b>Total</b>	<b>793</b>	

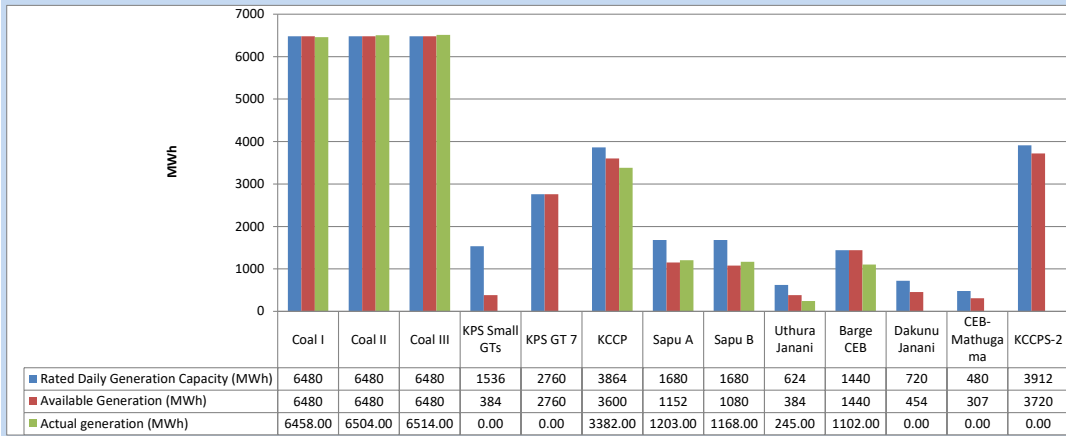
Table 04 - Current Year

Category	Dispatch (GWh)	
CEB Hydro	1,117	33.19%
CEB Coal	1,206	35.85%
CEB Thermal Oil	280	8.32%
IPP Thermal	252	7.49%
SPP Wind	41	1.23%
CEB Wind	50	1.49%
Mini Hydro *	214	6.37%
IPP Solar *	175	5.21%
IPP Waste heat	29	0.86%
<b>Total</b>	<b>3,364</b>	

\*Including estimated contribution from non telemetered plants

### 3. CEB owned Thermal Plant Dispatch

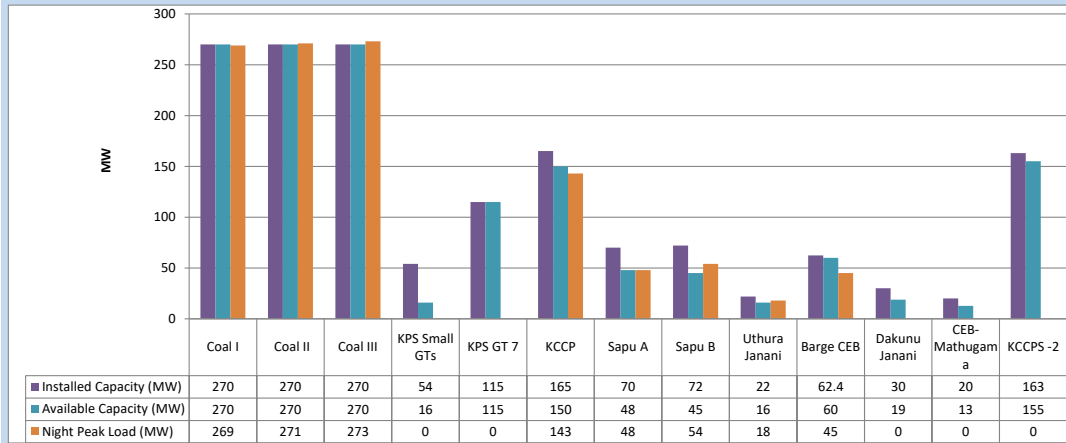
March 17, 2024



Available Generation is estimated based on plant availability at 6.00am on

March 18, 2024

### 4. CEB owned Thermal Plant Loading at the Night Peak

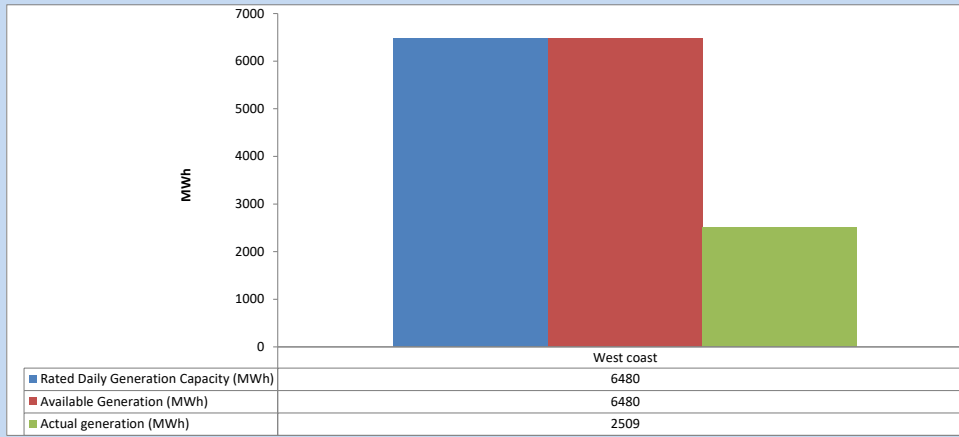


Plant availability is recorded at 6.00 am on

March 18, 2024

### 5. IPP owned Thermal Plant Dispatch

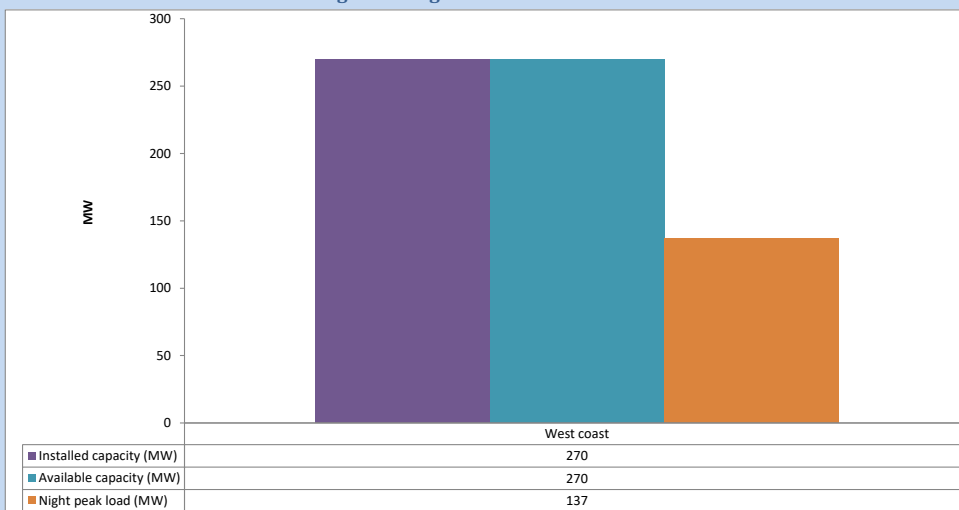
March 17, 2024



Available Generation is estimated based on plant availability at 6.00am on

March 18, 2024

### 6. IPP owned Thermal Plant Loading at the Night Peak

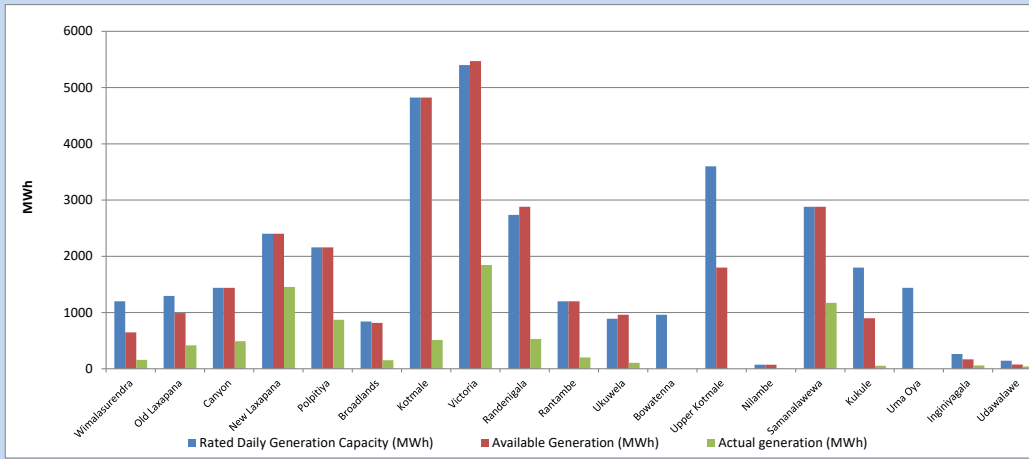


Plant availability is recorded at 6.00 am on

March 18, 2024

## 7. Major Hydro Plant Dispatch

March 17, 2024

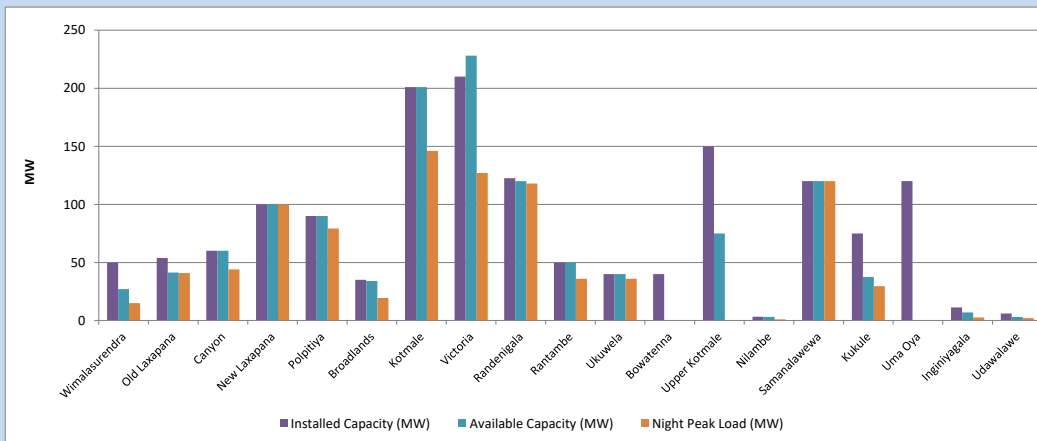


Available Generation is estimated based on plant availability at 6.00am on  
Broadlands power plant is operating in the Commissioning Stage

March 18, 2024

## 8. Major Hydro Plant Loading at Night Peak

March 17, 2024



Plant availability is recorded at 6.00 am on  
Broadlands power plant is operating in the Commissioning Stage

March 18, 2024

## 9. Summary of Major Plant performance

Table 05

Plant	Maximum Available Total Capacity	Plant Availability	Night peak Load	Plant Dispatch
	(MW)	(MW)	(MW)	(MWh)
Wimalasurendra	50	27	15	159
Old Laxapana	54	41	41	416
Canyon	60	60	44	489
New Laxapana	100	100	100	1,456
Polpitiya	90	90	79	870
Broadlands	35	34	19	153
Kotmale	201	201	146	510
Victoria	210	228	127	1,844
Randenigala	123	120	118	529
Rantambe	50	50	36	201
Ukuwela	40	40	36	107
Bowatenna	40	0	0	0
Upper Kotmale	150	75	0	0
Nilambe	3	3	1	6
Samanalawewa	120	120	120	1,172
Kukule	75	38	30	53
Uma Oya (Testing )	120	0	0	0
Inginiyagala	11	7	3	61
Udawalawe	6	3	2	42
Puttalam Coal I	270	270	269	6,458
Puttalam Coal II	270	270	271	6,504
Puttalam Coal III	270	270	273	6,514
KPS Small GTs	54	16	0	0
KPS GT 7	115	115	0	0
KCCP	165	150	143	3,382
Sapugaskanda A	70	48	48	1,203
Sapugaskanda B	72	45	54	1,168
Uthura Janani	22	16	18	245
Barge CEB	62	60	45	1,102
CEB-Hambantota	30	19	0	0
CEB-Mathugama	20	13	0	0
ACE Matara	24	0	0	0
Asia Power	50	0	0	0
KCCPS -2	163	155	0	0
West Coast	270	270	137	2,509
Nothern Power	36	0	0	0
ACE Embilipitiya	93	0	0	0
<b>Total</b>	<b>3,594</b>	<b>2,954</b>	<b>2,289</b>	<b>39,844</b>

Note-

Plant availability is the availability recorded at 6 am on

March 18, 2024

Installed Capacity is sourced from CEB Annual Report- 2022

### 10. Contribution to the Night Peak in MW

March 17, 2024

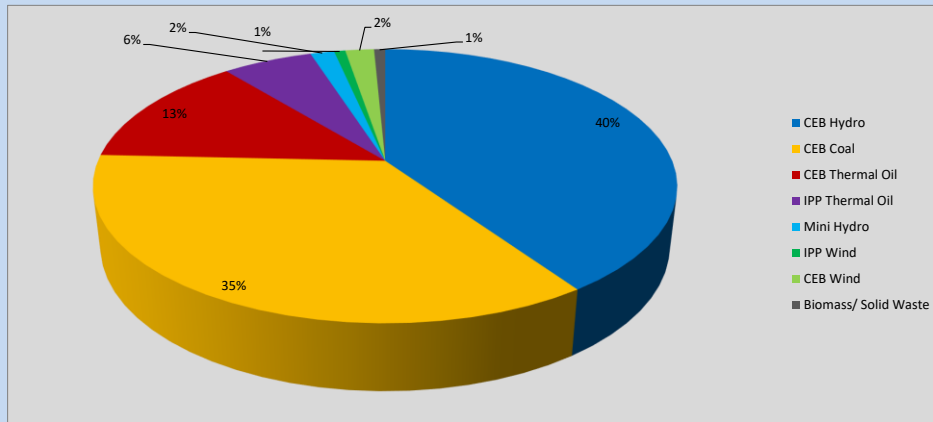


Table 06

CEB Hydro	930	MW
CEB Coal	813	MW
CEB Thermal Oil	308	MW
IPP Thermal Oil	137	MW
Mini Hydro (Telemetered)	36	MW
IPP Wind	17.1	MW
CEB Wind	43.8	MW
Biomass/ Solid Waste	17	MW

#### Recorded Peak Demand Data

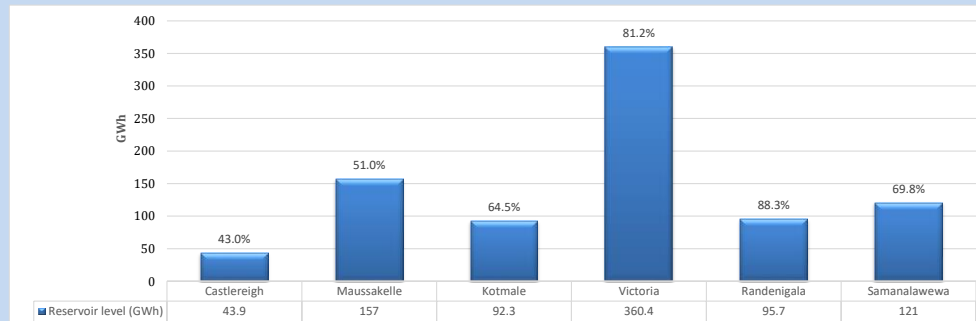
Table 07

Night Peak*	2,302	MW
Day Peak Maximum Demand	1,785	MW
Day Peak Minimum Demand	1,356	MW
Off Peak Minimum Demand	1,545	MW

Above figures are excluding contribution from roof top solar, non telemetered solar and mini hydro plants

#### Reservoir Levels -

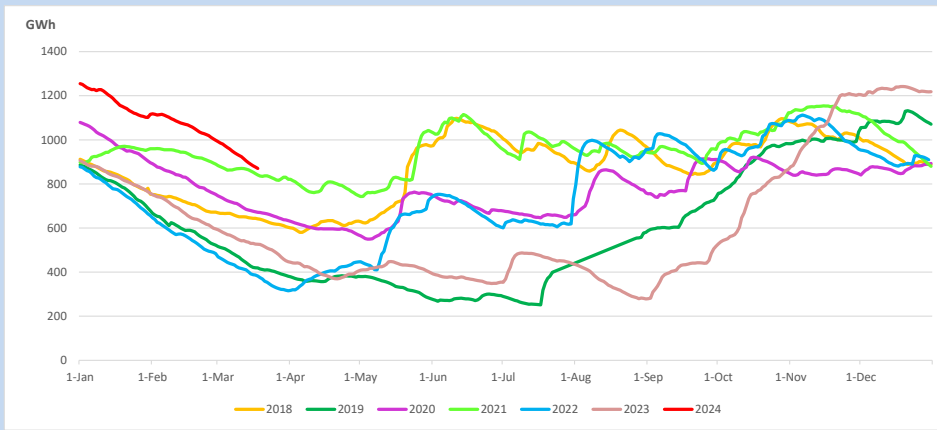
as at 06.00 Hr on March 18, 2024



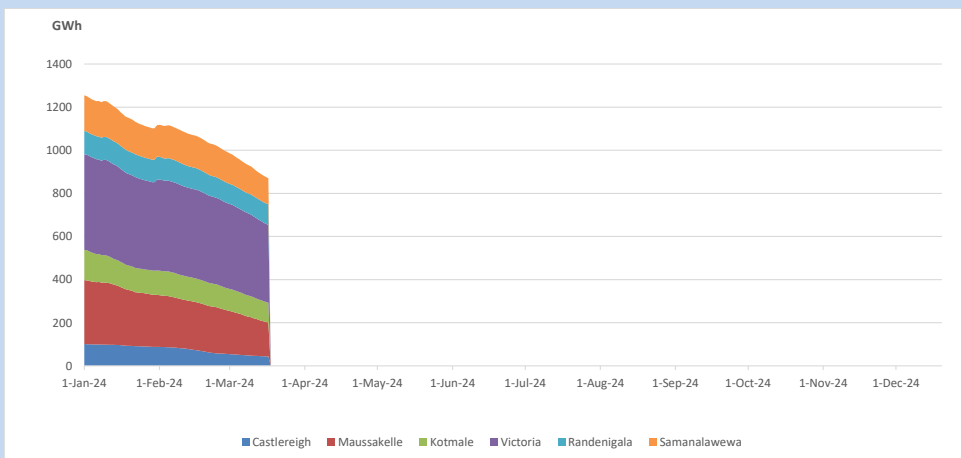
Total Reservoir Level  
% of Total capacity

370.3 GWh  
68.1%

### 11. Comparison of Total Reservoir Storage Levels with Past Years

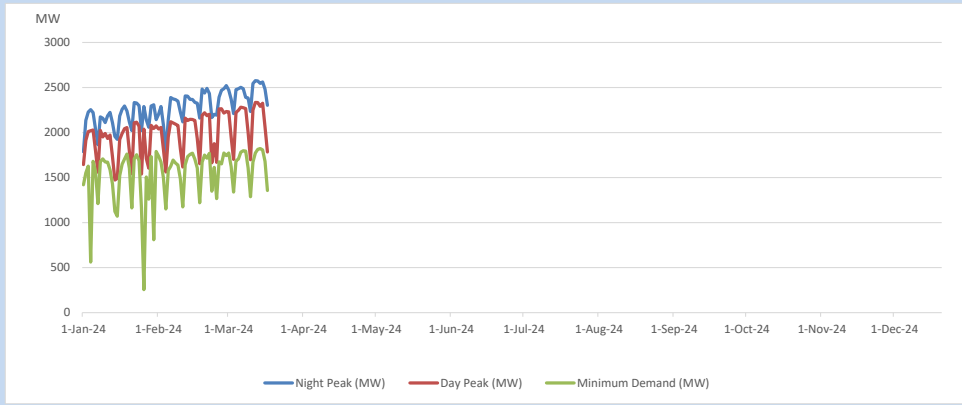


### 12. Variation of Major Hydro Reservoir Levels in the current year (GWh)





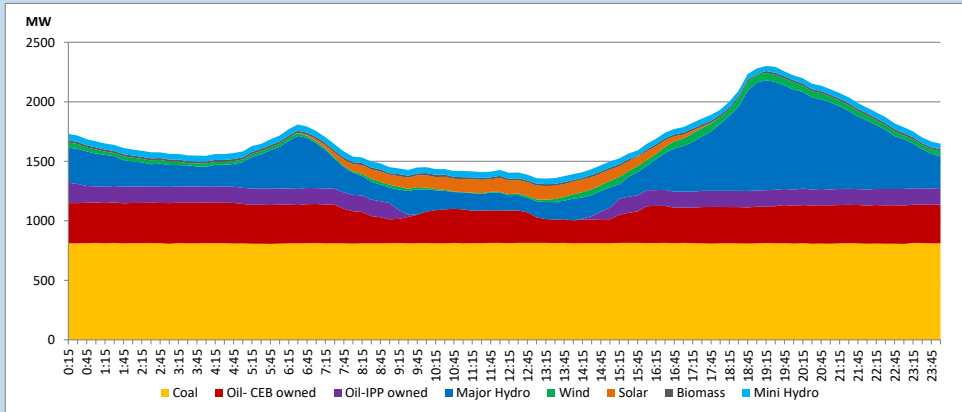
### 13. Variation of Demand during the current year



The above figures are excluding contribution from roof top solar, non telemetered solar and mini hydro plants

### 14. Daily Load Curve

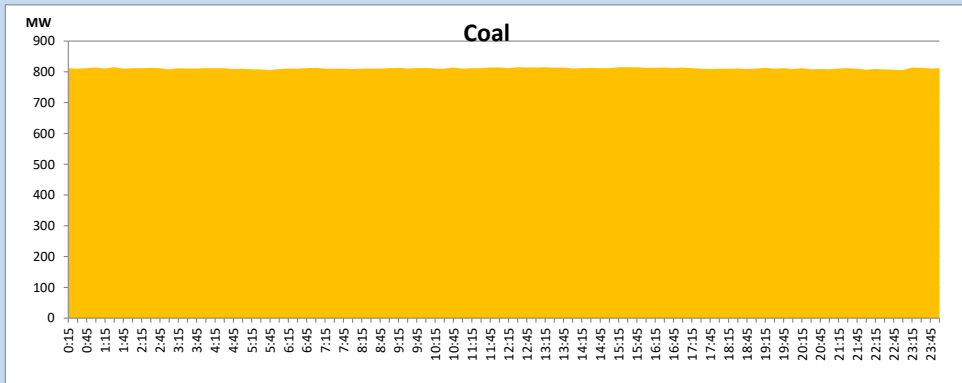
March 17, 2024



Solar and wind data is based on Telemetered Power Stations only

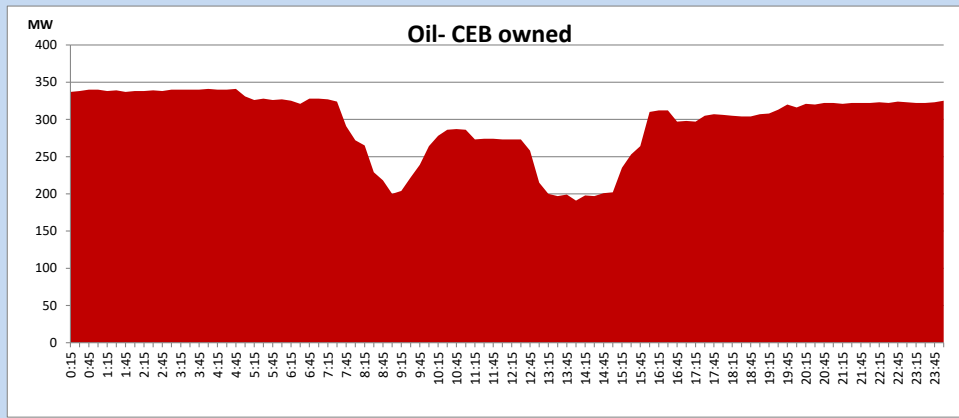
### Coal Generation during

March 17, 2024



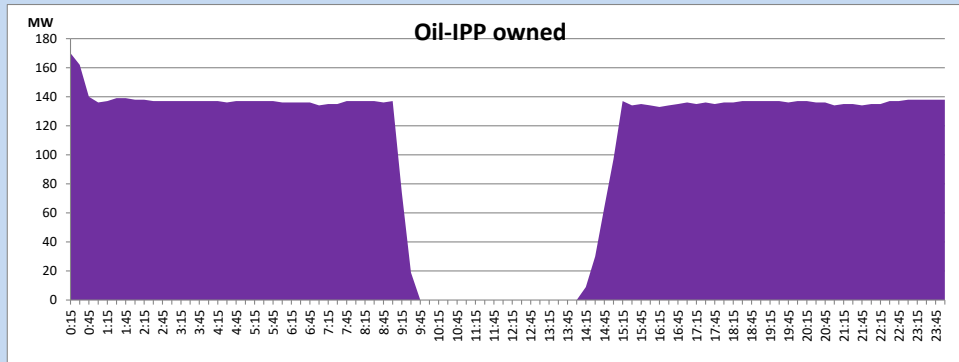
CEB Oil Plant Generation during

March 17, 2024



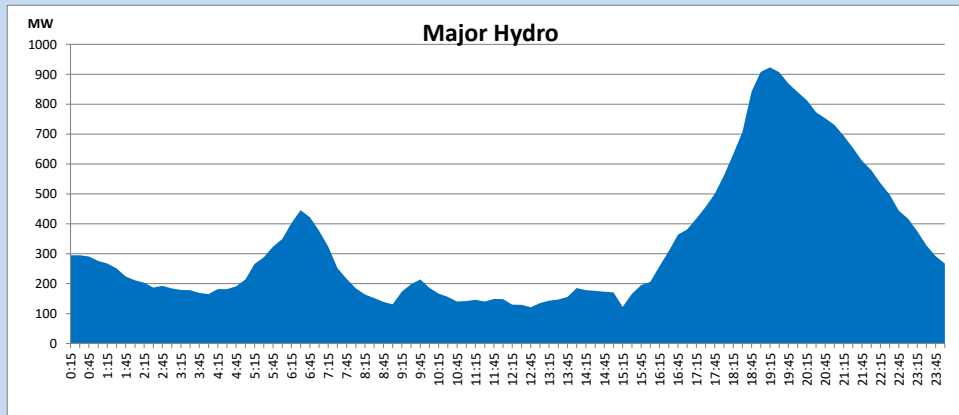
IPP Oil Plant Generation during

March 17, 2024



Major Hydro Generation during

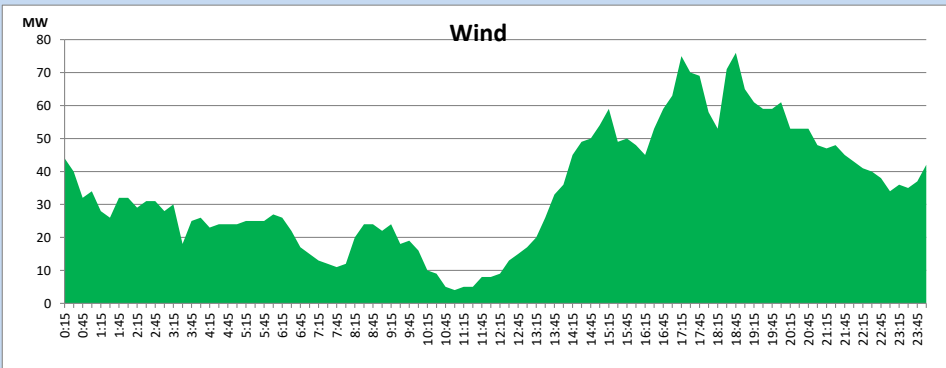
March 17, 2024



### Wind Generation during

March 17, 2024

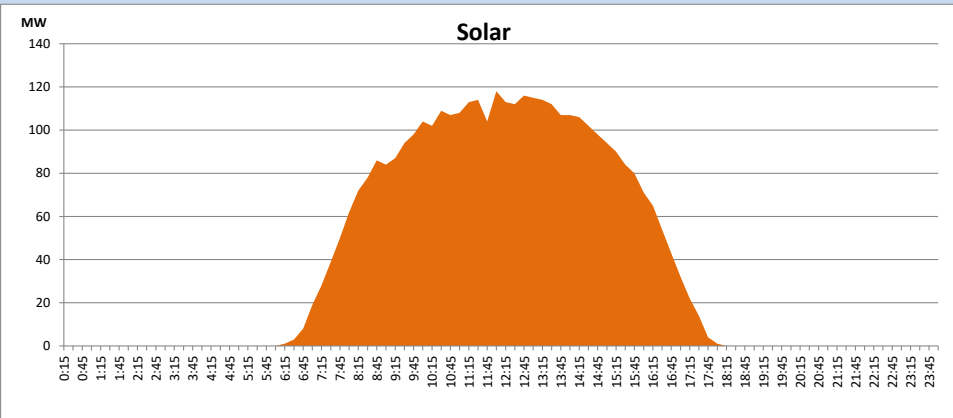
Based on Telemetered Power Stations only



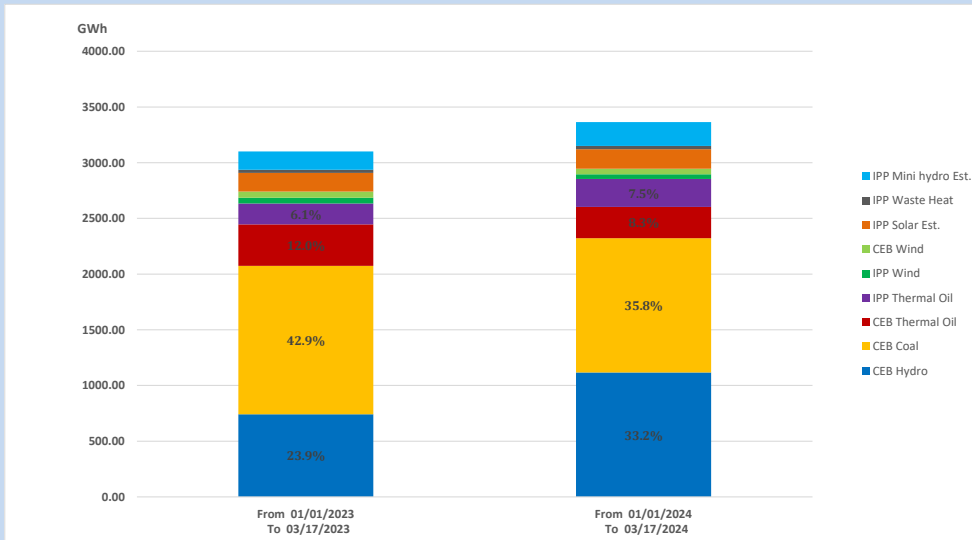
### Solar Generation during

March 17, 2024

Based on Telemetered Power Stations only



### 15. Cumulative Dispatch Comparison with Last Year



Cumulative dispatch  
 From 01/01/2023 To 03/17/2023  
 From 01/01/2024 To 03/17/2024

3100 GWh  
 3364 GWh

The above figures are including contribution from roof top solar, non telemetered solar and mini hydro plants)  
 Unserved energy due to power cuts has been excluded in 2023

Thermal Plant Fuel types

Table 08

Power Station	Primary Fuel
CEB Thermal	
Sapugaskanda 1	Heavy Fuel
Sapugaskanda 2	Heavy Fuel
Kelanitissa Small Gas Turbines	Auto Diesel
GT 7 - Kelanitissa	Auto Diesel
Kelanitissa CCY	Naphtha or Diesel
Lakvijaya 1	Coal
Lakvijaya 2	Coal
Lakvijaya 3	Coal
Uthuru Janani	Heavy Fuel
Barge CEB	Heavy Fuel
KCCPS -2	Auto Diesel

Power Station	Primary Fuel
Private Thermal	
West Coast	Auto Diesel / Heavy Fuel

Major Incidents reported during the day

March 17, 2024

Nil.