

Generation and Reservoirs Statistics

March 15, 2024



PUBLIC UTILITIES COMMISSION OF SRI LANKA

1. Daily Generation Mix in MWh

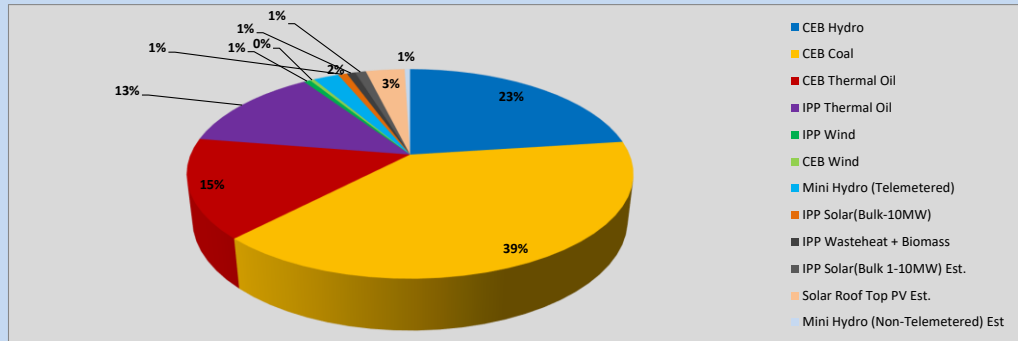


Table 01

	Generation (MWh)
CEB Hydro	11,371
CEB Coal	19,475
CEB Thermal Oil	7,602
IPP Thermal Oil	6,468
IPP Wind	282
CEB Wind	182
Mini Hydro (Telemetered)	1,091
IPP Solar (Bulk)	384
IPP Waste heat + Biomass	363
Total Generation (Excluding estimated figures)	47,218
* Estimated unserved energy	0
* Estimated Mini Hydro (Non telemetered)	232
* Estimated IPP Solar PV (Bulk 1-10MW)	466
* Estimated Solar Roof Top PV	1670
Total Generation (Including estimated figures)	49,586

* Estimated figures of CEB generation report

Table 02

	Installed Capacity (MW)
CEB Hydro	1644
CEB Coal	810
CEB Thermal Oil	773.1
IPP Thermal Oil (West Coast)	270
IPP Wind	163
CEB Wind	100
Mini Hydro	422
IPP Waste heat + Biomass	54
IPP Solar	137
Rooftop Solar (Ordinary)	293
Rooftop Solar (LT Bulk)	272
Rooftop Solar (HT Bulk)	74

Data Source - Monthly Review Report [Nov-2023]

2. Cumulative Dispatch

Following data excludes the contribution from roof top solar, non telemetered solar and mini hydro plants

Table 03 - Current Month

Category	Dispatch (GWh)	
CEB Hydro	161	22.85%
CEB Coal	288	40.97%
CEB Thermal Oil	106	15.10%
IPP Thermal	74	10.54%
SPP Wind	5	0.66%
CEB Wind	5	0.74%
Mini Hydro *	21	2.99%
IPP Solar *	38	5.34%
IPP Waste heat + BMP	6	0.81%
Total	704	

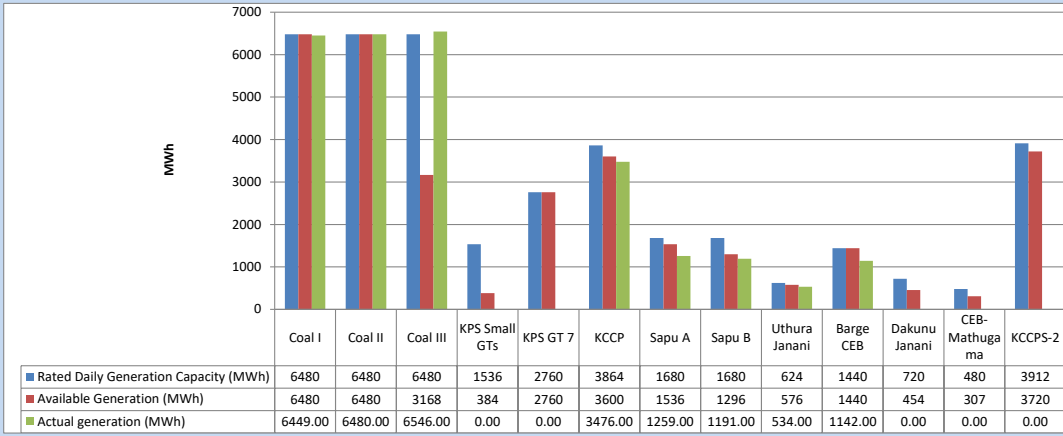
Table 04 - Current Year

Category	Dispatch (GWh)	
CEB Hydro	1,099	33.56%
CEB Coal	1,168	35.67%
CEB Thermal Oil	265	8.09%
IPP Thermal	243	7.42%
SPP Wind	41	1.24%
CEB Wind	49	1.51%
Mini Hydro *	212	6.47%
IPP Solar *	170	5.19%
IPP Waste heat	28	0.86%
Total	3,275	

*Including estimated contribution from non telemetered plants

3. CEB owned Thermal Plant Dispatch

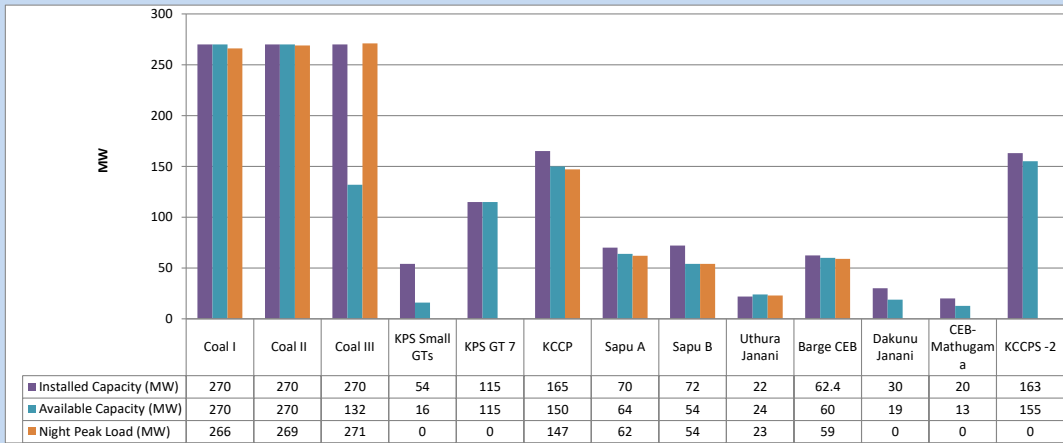
March 15, 2024



Available Generation is estimated based on plant availability at 6.00am on

March 16, 2024

4. CEB owned Thermal Plant Loading at the Night Peak

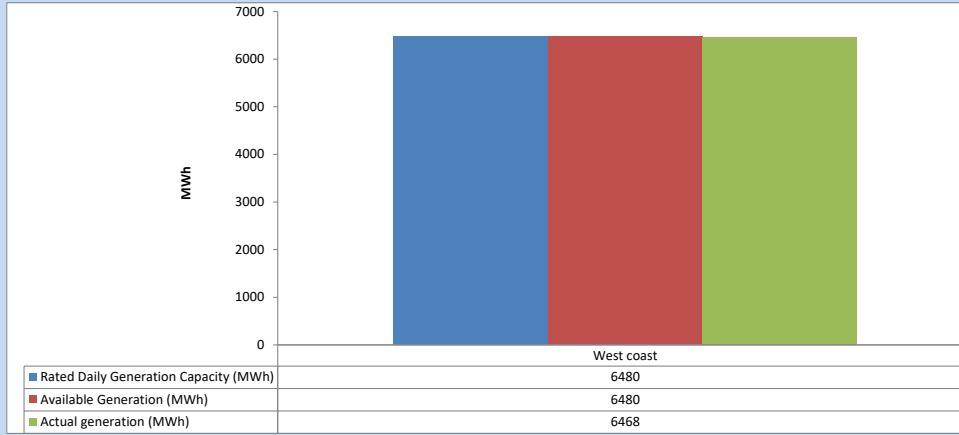


Plant availability is recorded at 6.00 am on

March 16, 2024

5. IPP owned Thermal Plant Dispatch

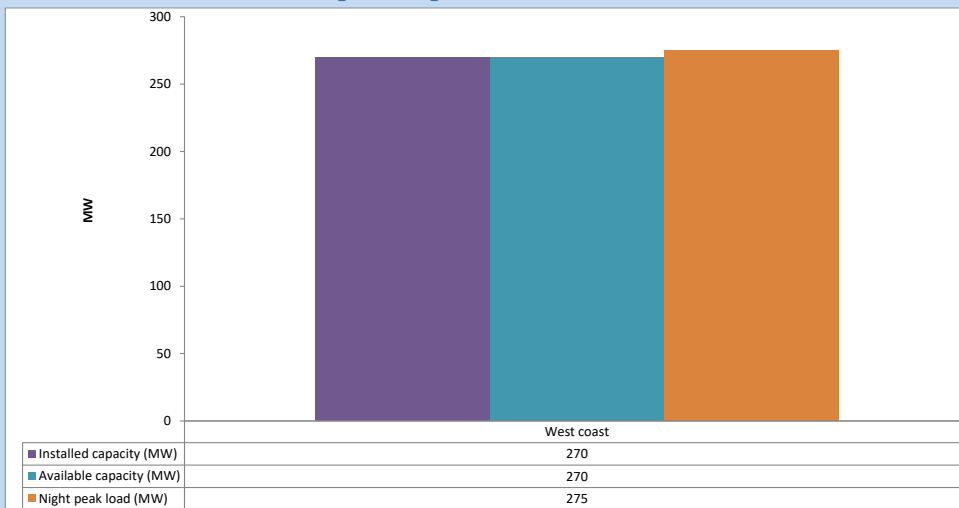
March 15, 2024



Available Generation is estimated based on plant availability at 6.00am on

March 16, 2024

6. IPP owned Thermal Plant Loading at the Night Peak

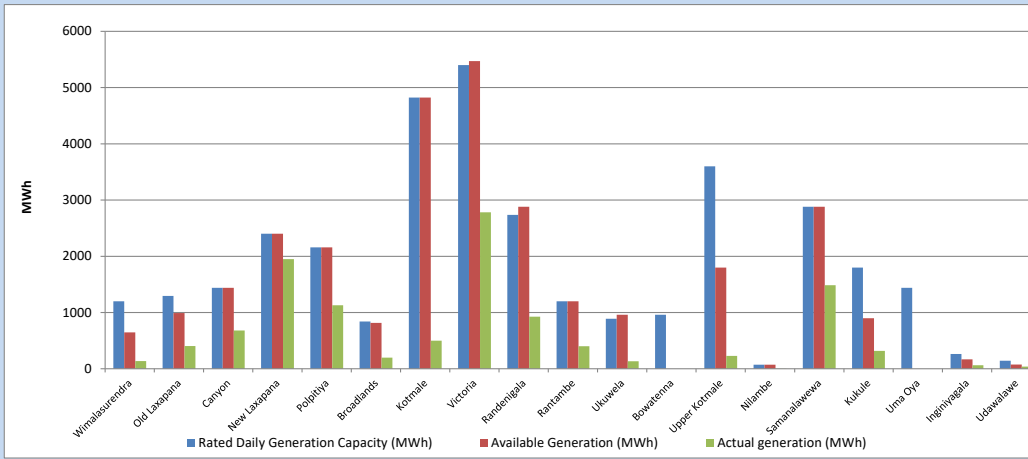


Plant availability is recorded at 6.00 am on

March 16, 2024

7. Major Hydro Plant Dispatch

March 15, 2024

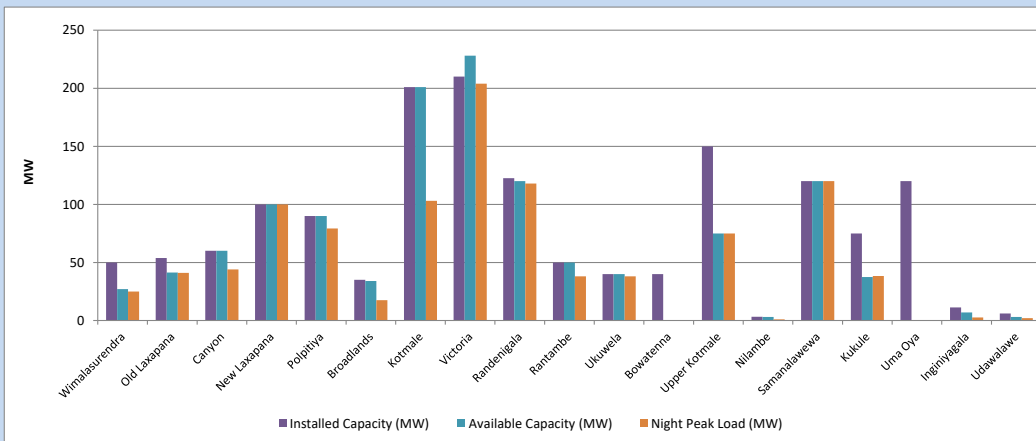


Available Generation is estimated based on plant availability at 6.00am on
Broadlands power plant is operating in the Commissioning Stage

March 16, 2024

8. Major Hydro Plant Loading at Night Peak

March 15, 2024



Plant availability is recorded at 6.00 am on
Broadlands power plant is operating in the Commissioning Stage

March 16, 2024

9. Summary of Major Plant performance

Table 05

Plant	Maximum Available Total Capacity	Plant Availability	Night peak Load	Plant Dispatch
	(MW)	(MW)	(MW)	(MWh)
Wimalasurendra	50	27	25	138
Old Laxapana	54	41	41	403
Canyon	60	60	44	680
New Laxapana	100	100	100	1,948
Polpitiya	90	90	79	1,130
Broadlands	35	34	18	197
Kotmale	201	201	103	500
Victoria	210	228	204	2,783
Randenigala	123	120	118	926
Rantambe	50	50	38	401
Ukuwela	40	40	38	134
Bowatenna	40	0	0	0
Upper Kotmale	150	75	75	228
Nilambe	3	3	1	2
Samanalawewa	120	120	120	1,485
Kukule	75	38	38	317
Uma Oya (Testing)	120	0	0	0
Inginiyagala	11	7	3	62
Udawalawe	6	3	2	37
Puttalam Coal I	270	270	266	6,449
Puttalam Coal II	270	270	269	6,480
Puttalam Coal III	270	132	271	6,546
KPS Small GTs	54	16	0	0
KPS GT 7	115	115	0	0
KCCP	165	150	147	3,476
Sapugaskanda A	70	64	62	1,259
Sapugaskanda B	72	54	54	1,191
Uthura Janani	22	24	23	534
Barge CEB	62	60	59	1,142
CEB-Hambantota	30	19	0	0
CEB-Mathugama	20	13	0	0
ACE Matara	24	0	0	0
Asia Power	50	0	0	0
KCCPS -2	163	155	0	0
West Coast	270	270	275	6,468
Nothern Power	36	0	0	0
ACE Embilipitiya	93	0	0	0
Total	3,594	2,849	2,549	47,218

Note-

Plant availability is the availability recorded at 6 am on

March 16, 2024

Installed Capacity is sourced from CEB Annual Report- 2022

10. Contribution to the Night Peak in MW

March 15, 2024

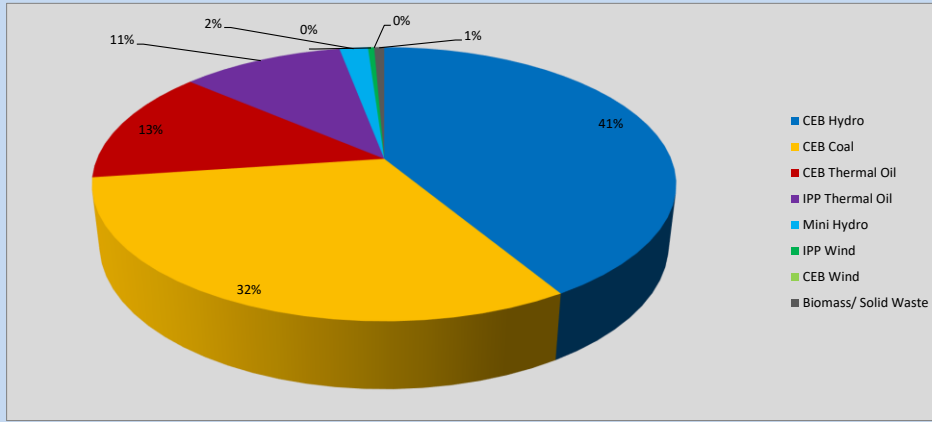


Table 06

CEB Hydro	1059	MW
CEB Coal	806	MW
CEB Thermal Oil	345	MW
IPP Thermal Oil	275	MW
Mini Hydro (Telemetered)	48	MW
IPP Wind	10.6	MW
CEB Wind	0	MW
Biomass/ Solid Waste	17	MW

Recorded Peak Demand Data

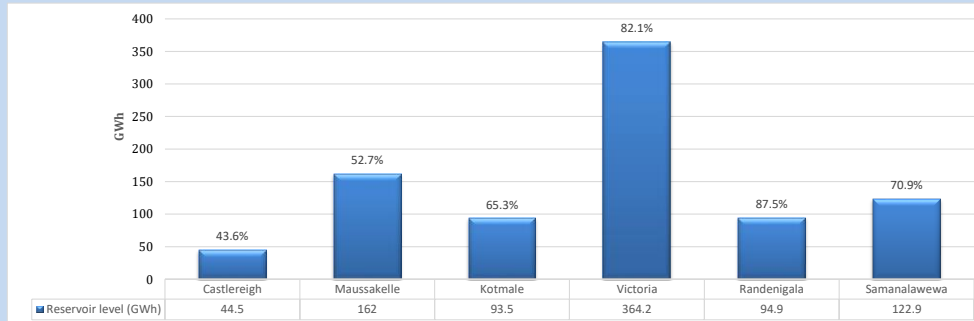
Table 07

Night Peak*	2,561	MW
Day Peak Maximum Demand	2,325	MW
Day Peak Minimum Demand	1,806	MW
Off Peak Minimum Demand	1,552	MW

Above figures are excluding contribution from roof top solar, non telemetered solar and mini hydro plants

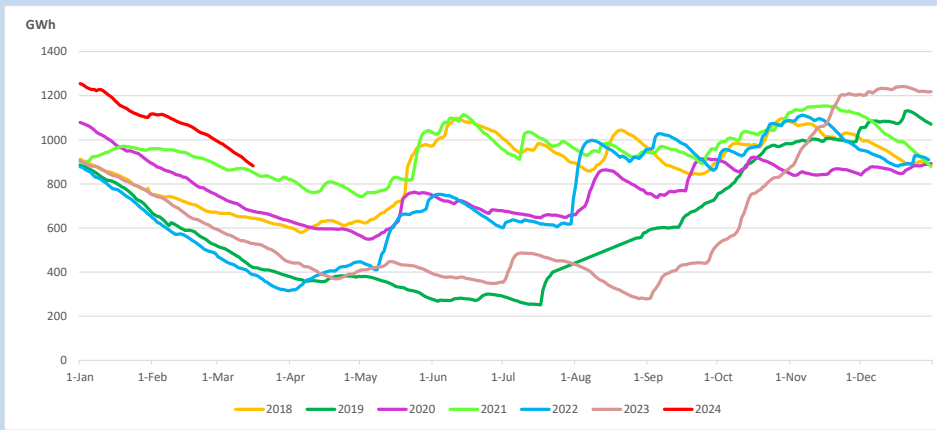
Reservoir Levels -

as at 06.00 Hr on March 16, 2024

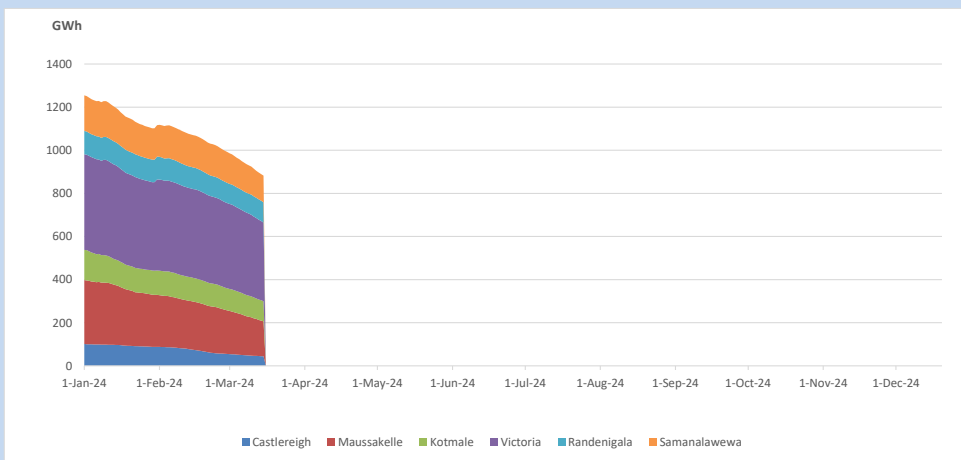


Total Reservoir Level 882 GWh
 % of Total capacity 69.0%

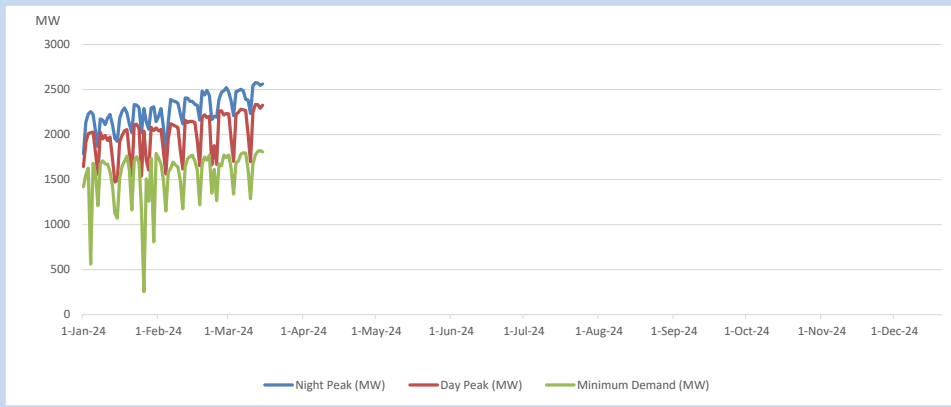
11. Comparison of Total Reservoir Storage Levels with Past Years



12. Variation of Major Hydro Reservoir Levels in the current year (GWh)



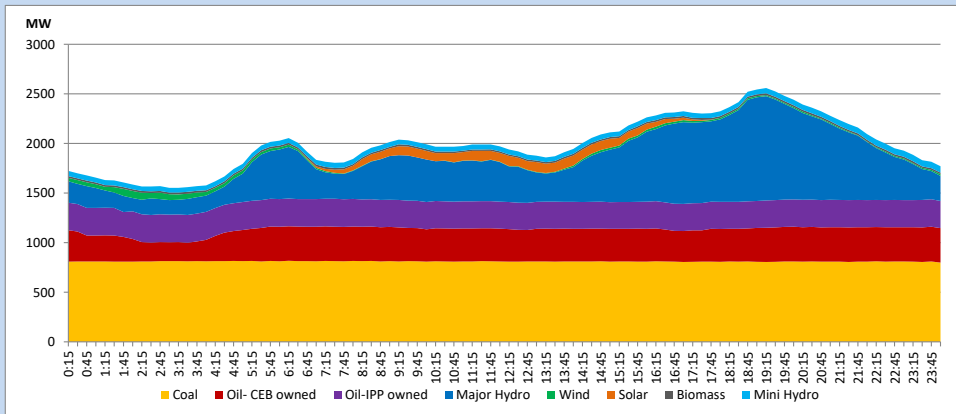
13. Variation of Demand during the current year



The above figures are excluding contribution from roof top solar, non telemetered solar and mini hydro plants

14. Daily Load Curve

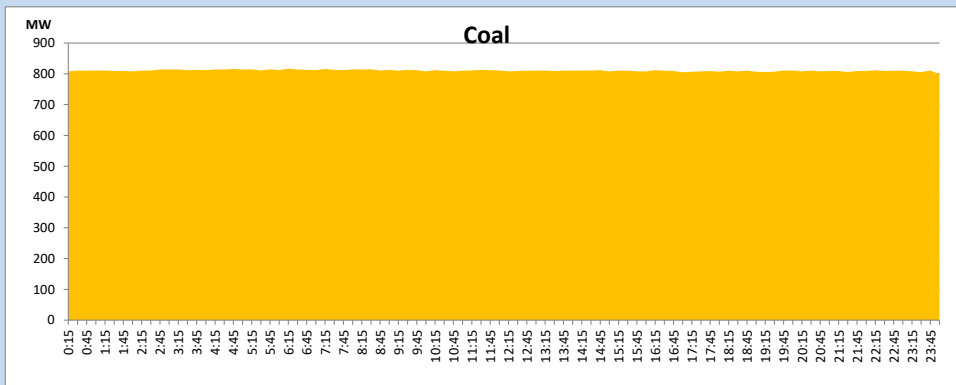
March 15, 2024



Solar and wind data is based on Telemetered Power Stations only

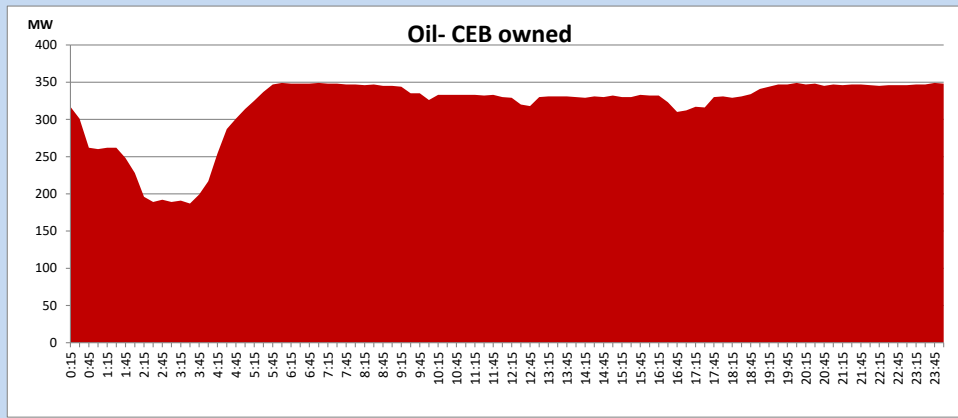
Coal Generation during

March 15, 2024



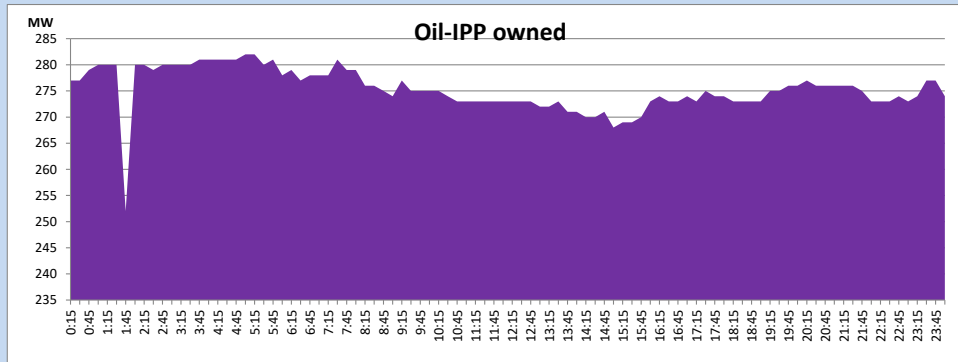
CEB Oil Plant Generation during

March 15, 2024



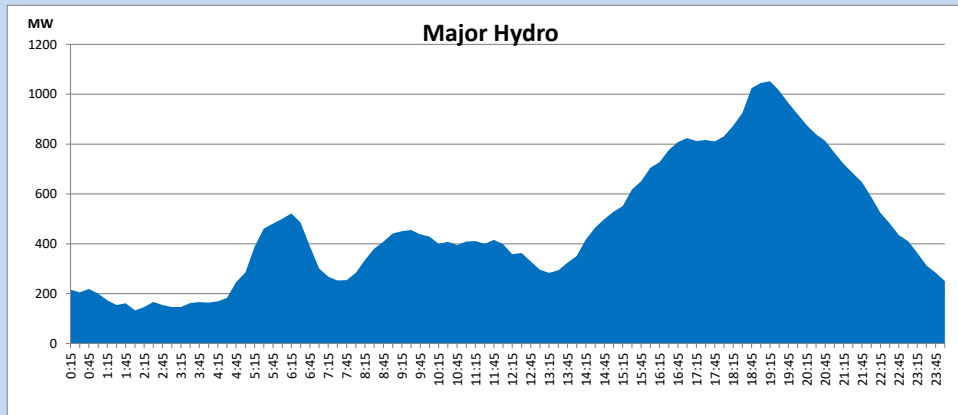
IPP Oil Plant Generation during

March 15, 2024



Major Hydro Generation during

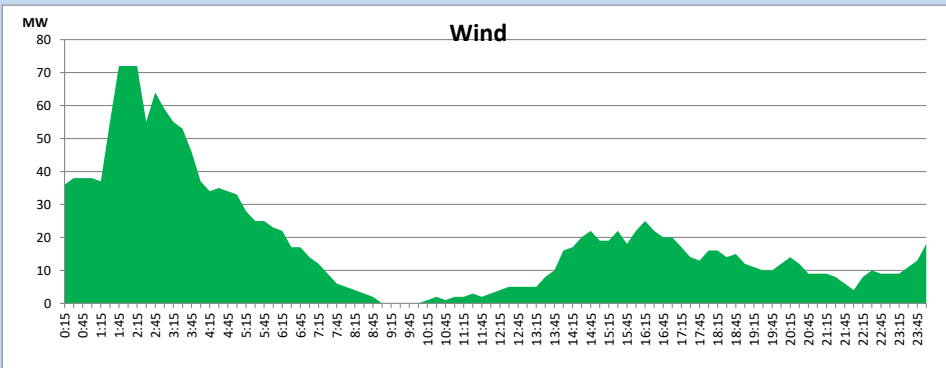
March 15, 2024



Wind Generation during

March 15, 2024

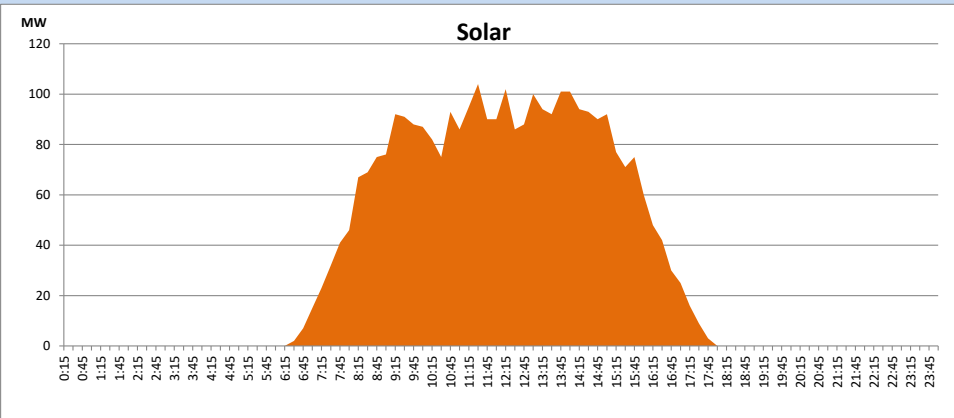
Based on Telemetered Power Stations only



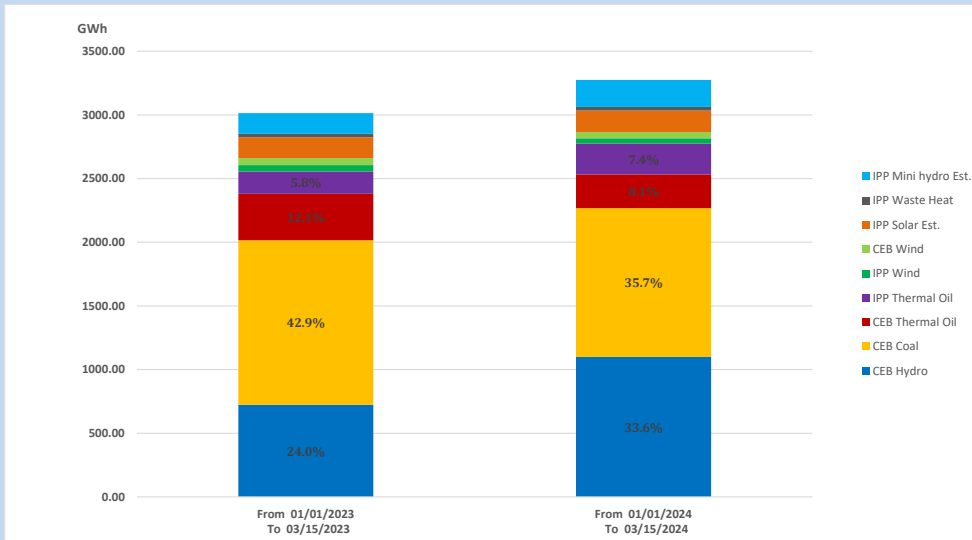
Solar Generation during

March 15, 2024

Based on Telemetered Power Stations only



15. Cumulative Dispatch Comparison with Last Year



Cumulative dispatch
 From 01/01/2023 To 03/15/2023
 From 01/01/2024 To 03/15/2024

3014 GWh
 3275 GWh

The above figures are including contribution from roof top solar, non telemetered solar and mini hydro plants)
 Unserviced energy due to power cuts has been excluded in 2023

Thermal Plant Fuel types

Table 08

Power Station	Primary Fuel
CEB Thermal	
Sapugaskanda 1	Heavy Fuel
Sapugaskanda 2	Heavy Fuel
Kelanitissa Small Gas Turbines	Auto Diesel
GT 7 - Kelanitissa	Auto Diesel
Kelanitissa CCY	Naphtha or Diesel
Lakvijaya 1	Coal
Lakvijaya 2	Coal
Lakvijaya 3	Coal
Uthuru Janani	Heavy Fuel
Barge CEB	Heavy Fuel
KCCPS -2	Auto Diesel

Power Station	Primary Fuel
Private Thermal	
West Coast	Auto Diesel / Heavy Fuel

Major Incidents reported during the day

March 15, 2024

- 1) LVPS Unit 03 de-loaded to 132MW (net) from 11:45hrs due to a malfunction of ID fan. The unit is yet to reach full load.