

Generation and Reservoirs Statistics

March 12, 2024



PUBLIC UTILITIES COMMISSION OF SRI LANKA

1. Daily Generation Mix in MWh

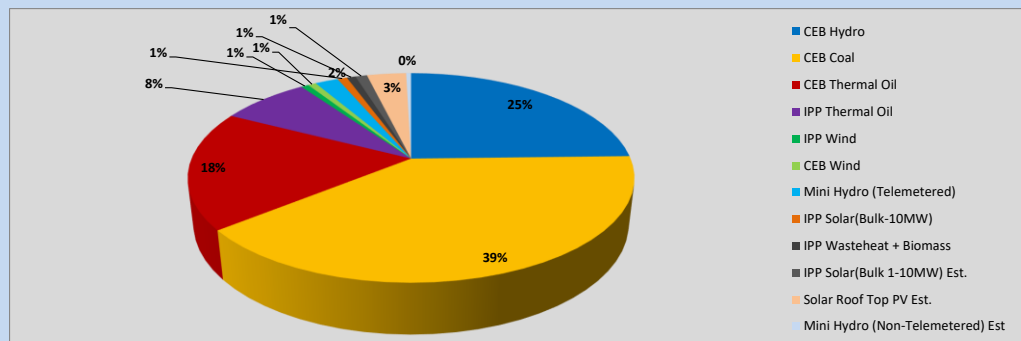


Table 01

	Generation (MWh)
CEB Hydro	12,110
CEB Coal	19,482
CEB Thermal Oil	9,027
IPP Thermal Oil	3,775
IPP Wind	323
CEB Wind	344
Mini Hydro (Telemetered)	983
IPP Solar (Bulk)	409
IPP Waste heat + Biomass	378
Total Generation (Excluding estimated figures)	46,831
* Estimated unserved energy	0
* Estimated Mini Hydro (Non telemetered)	210
* Estimated IPP Solar PV (Bulk 1-10MW)	495
* Estimated Solar Roof Top PV	1670
Total Generation (Including estimated figures)	49,206

* Estimated figures of CEB generation report

Table 02

	Installed Capacity (MW)
CEB Hydro	1644
CEB Coal	810
CEB Thermal Oil	773.1
IPP Thermal Oil (West Coast)	270
IPP Wind	163
CEB Wind	100
Mini Hydro	422
IPP Waste heat + Biomass	54
IPP Solar	137
Rooftop Solar (Ordinary)	293
Rooftop Solar (LT Bulk)	272
Rooftop Solar (HT Bulk)	74

Data Source - Monthly Review Report [Nov-2023]

2. Cumulative Dispatch

Following data excludes the contribution from roof top solar, non telemetered solar and mini hydro plants

Table 03 - Current Month

Category	Dispatch (GWh)	
CEB Hydro	126	22.74%
CEB Coal	230	41.41%
CEB Thermal Oil	83	14.90%
IPP Thermal	56	10.06%
SPP Wind	4	0.73%
CEB Wind	5	0.85%
Mini Hydro *	17	3.08%
IPP Solar *	30	5.40%
IPP Waste heat + BMP	5	0.83%
Total	555	

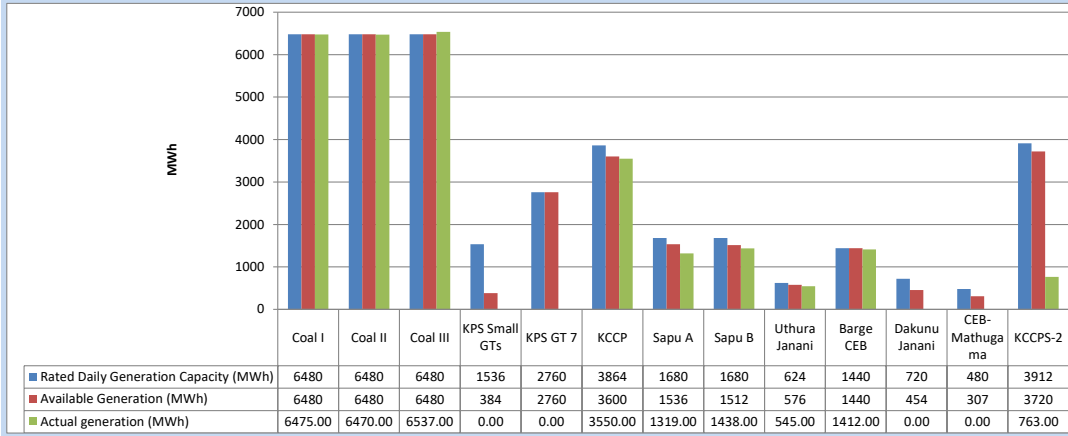
Table 04 - Current Year

Category	Dispatch (GWh)	
CEB Hydro	1,065	34.05%
CEB Coal	1,110	35.50%
CEB Thermal Oil	241	7.72%
IPP Thermal	225	7.18%
SPP Wind	40	1.28%
CEB Wind	49	1.56%
Mini Hydro *	208	6.65%
IPP Solar *	162	5.19%
IPP Waste heat	27	0.86%
Total	3,126	

*Including estimated contribution from non telemetered plants

3. CEB owned Thermal Plant Dispatch

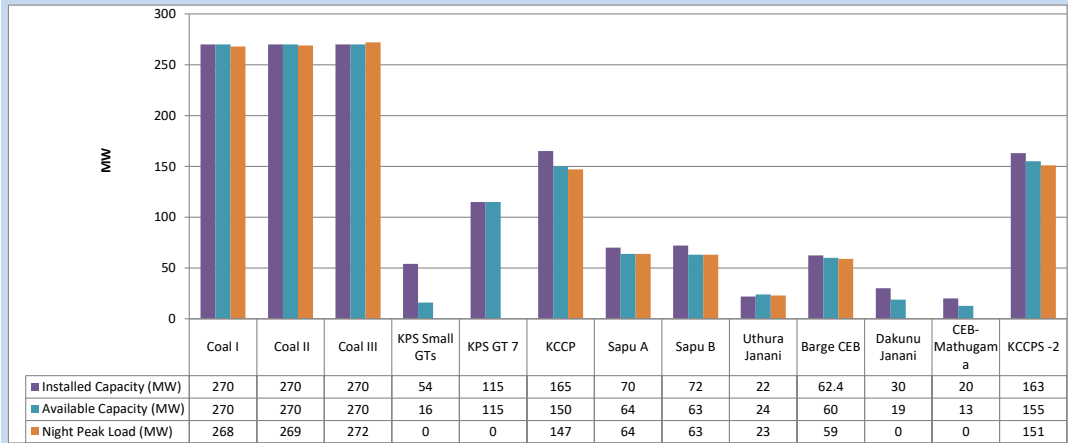
March 12, 2024



Available Generation is estimated based on plant availability at 6.00am on

March 13, 2024

4. CEB owned Thermal Plant Loading at the Night Peak

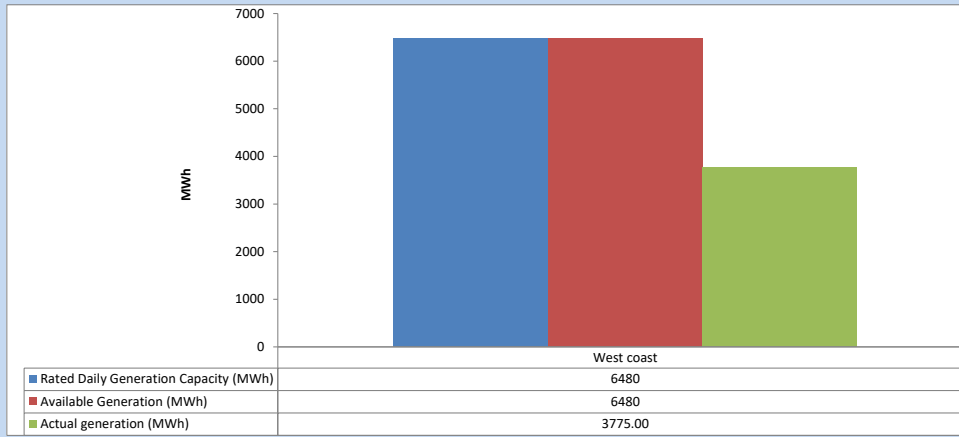


Plant availability is recorded at 6.00 am on

March 13, 2024

5. IPP owned Thermal Plant Dispatch

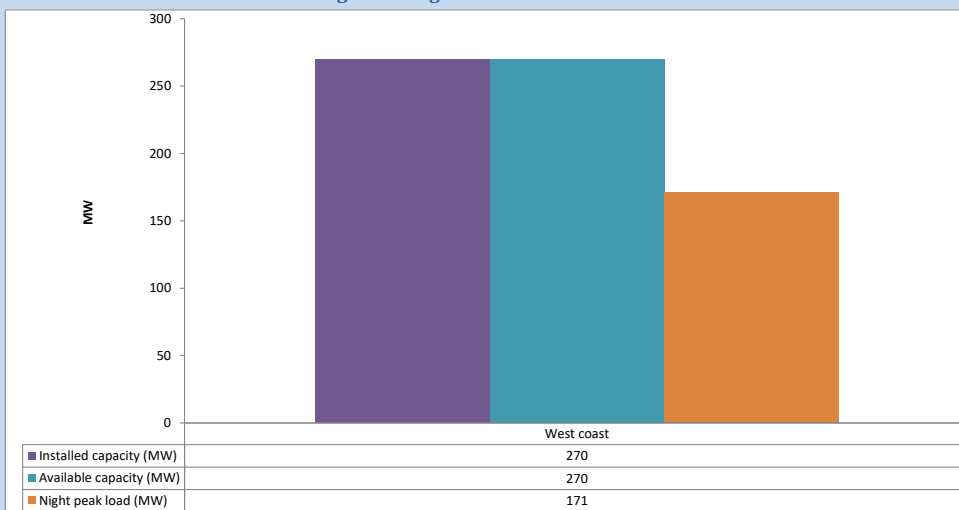
March 12, 2024



Available Generation is estimated based on plant availability at 6.00am on

March 13, 2024

6. IPP owned Thermal Plant Loading at the Night Peak

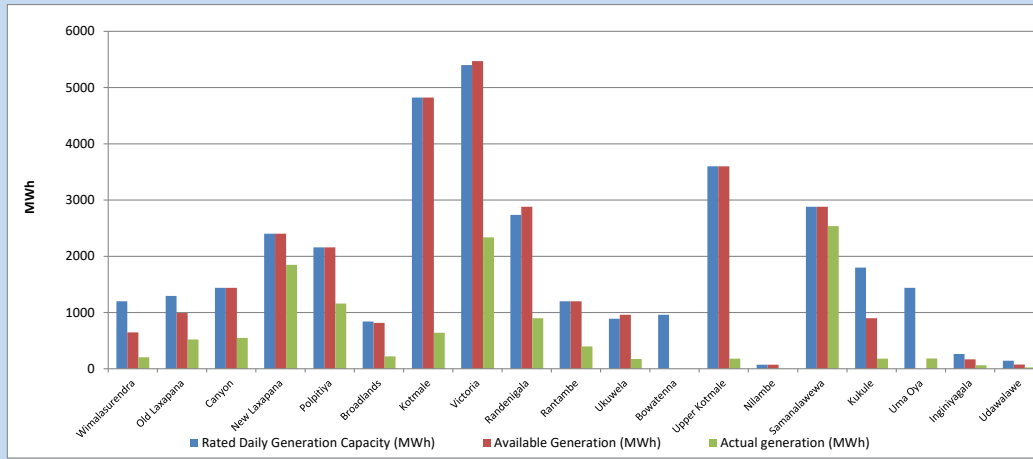


Plant availability is recorded at 6.00 am on

March 13, 2024

7. Major Hydro Plant Dispatch

March 12, 2024

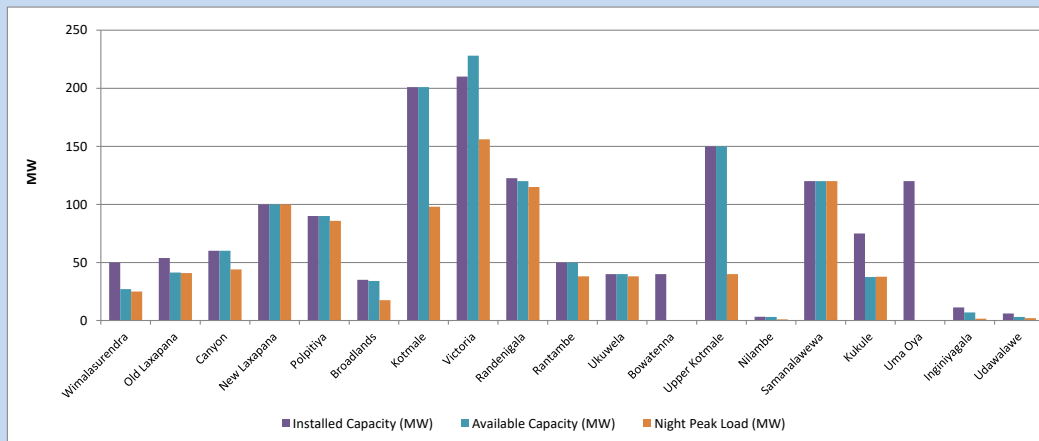


Available Generation is estimated based on plant availability at 6.00am on
Broadlands power plant is operating in the Commissioning Stage

March 13, 2024

8. Major Hydro Plant Loading at Night Peak

March 12, 2024



Plant availability is recorded at 6.00 am on
Broadlands power plant is operating in the Commissioning Stage

March 13, 2024

9. Summary of Major Plant performance

Table 05

Plant	Maximum Available Total Capacity	Plant Availability	Night peak Load	Plant Dispatch
	(MW)	(MW)	(MW)	(MWh)
Wimalasurendra	50	27	25	205
Old Laxapana	54	41	41	521
Canyon	60	60	44	547
New Laxapana	100	100	100	1,848
Polpitiya	90	90	86	1,160
Broadlands	35	34	18	220
Kotmale	201	201	98	640
Victoria	210	228	156	2,336
Randenigala	123	120	115	899
Rantambe	50	50	38	398
Ukuwela	40	40	38	172
Bowatenna	40	0	0	0
Upper Kotmale	150	150	40	179
Nilambe	3	3	1	0
Samanalawewa	120	120	120	2,537
Kukule	75	38	38	180
Uma Oya (Testing)	120	0	0	184
Inginiyagala	11	7	2	62
Udawalawe	6	3	2	23
Puttalam Coal I	270	270	268	6,475
Puttalam Coal II	270	270	269	6,470
Puttalam Coal III	270	270	272	6,537
KPS Small GTs	54	16	0	0
KPS GT 7	115	115	0	0
KCCP	165	150	147	3,550
Sapugaskanda A	70	64	64	1,319
Sapugaskanda B	72	63	63	1,438
Uthura Janani	22	24	23	545
Barge CEB	62	60	59	1,412
CEB-Hambantota	30	19	0	0
CEB-Mathugama	20	13	0	0
ACE Matara	24	0	0	0
Asia Power	50	0	0	0
KCCPS -2	163	155	151	763
West Coast	270	270	171	3,775
Nothern Power	36	0	0	0
ACE Embilipitiya	93	0	0	0
Total	3,594	3,071	2,563	46,832

Note-

Plant availability is the availability recorded at 6 am on

March 13, 2024

Installed Capacity is sourced from CEB Annual Report- 2022

10. Contribution to the Night Peak in MW

March 12, 2024

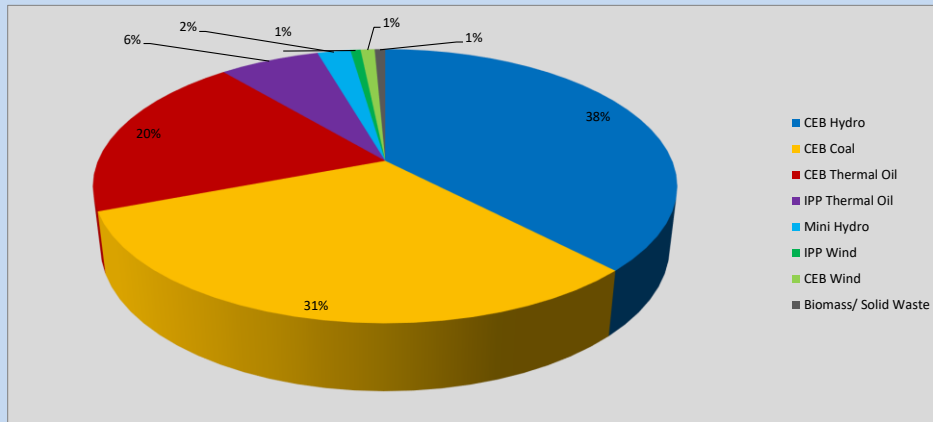


Table 06

CEB Hydro	973	MW
CEB Coal	809	MW
CEB Thermal Oil	507	MW
IPP Thermal Oil	171	MW
Mini Hydro (Telemetered)	56	MW
IPP Wind	17.4	MW
CEB Wind	23.9	MW
Biomass/ Solid Waste	18	MW

Recorded Peak Demand Data

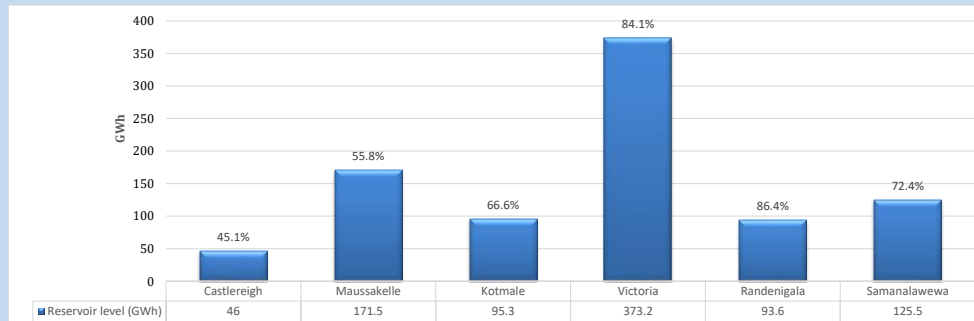
Table 07

Night Peak*	2,576	MW
Day Peak Maximum Demand	2,334	MW
Day Peak Minimum Demand	1,772	MW
Off Peak Minimum Demand	1,522	MW

Above figures are excluding contribution from roof top solar, non telemetered solar and mini hydro plants

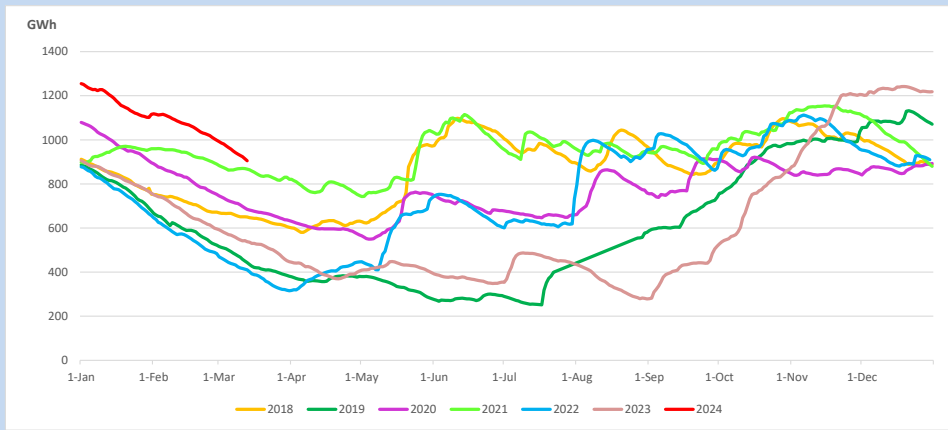
Reservoir Levels -

as at 06.00 Hr on March 13, 2024

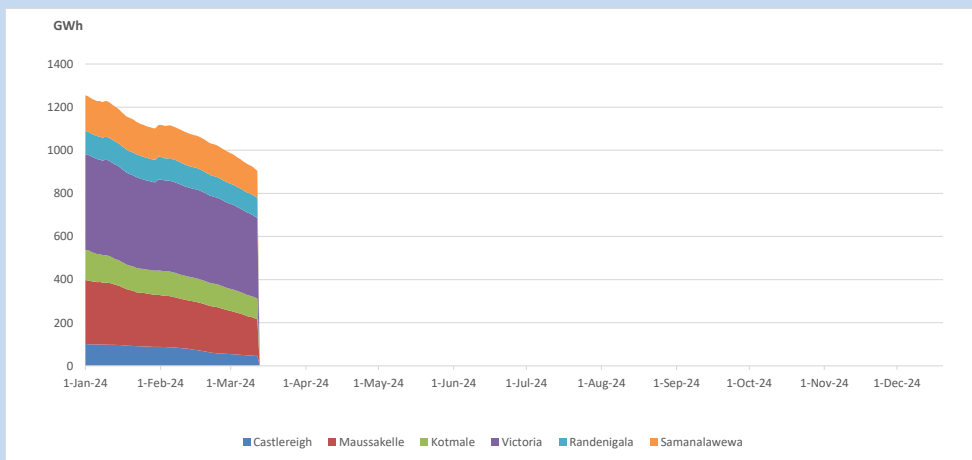


Total Reservoir Level 905.1 GWh
% of Total capacity 70.8%

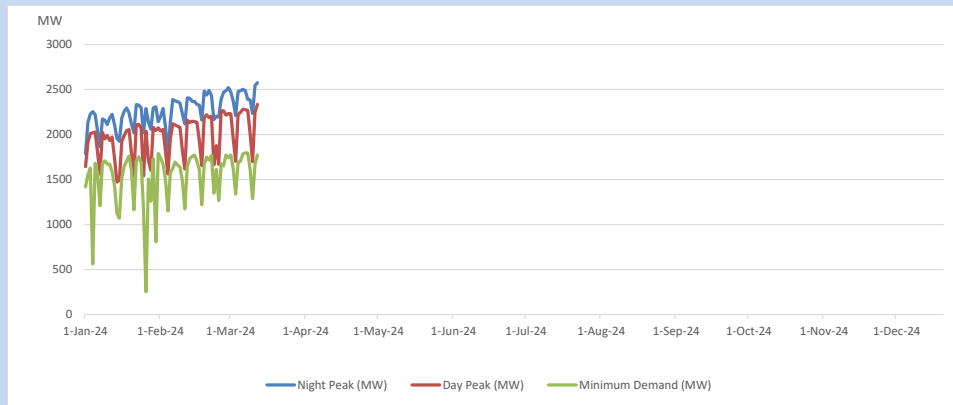
11. Comparison of Total Reservoir Storage Levels with Past Years



12. Variation of Major Hydro Reservoir Levels in the current year (GWh)



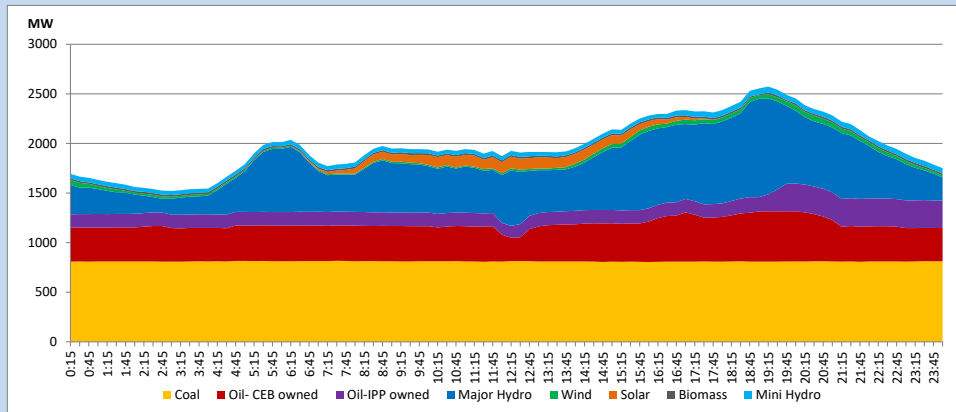
13. Variation of Demand during the current year



The above figures are excluding contribution from roof top solar, non telemetered solar and mini hydro plants

14. Daily Load Curve

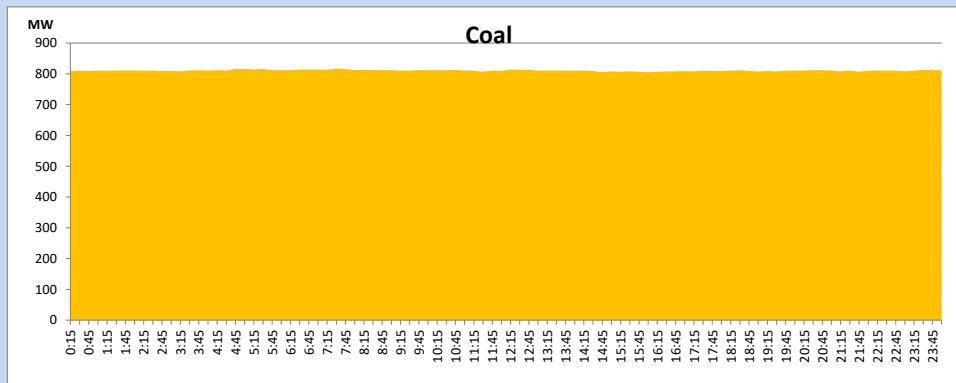
March 12, 2024



Solar and wind data is based on Telemetered Power Stations only

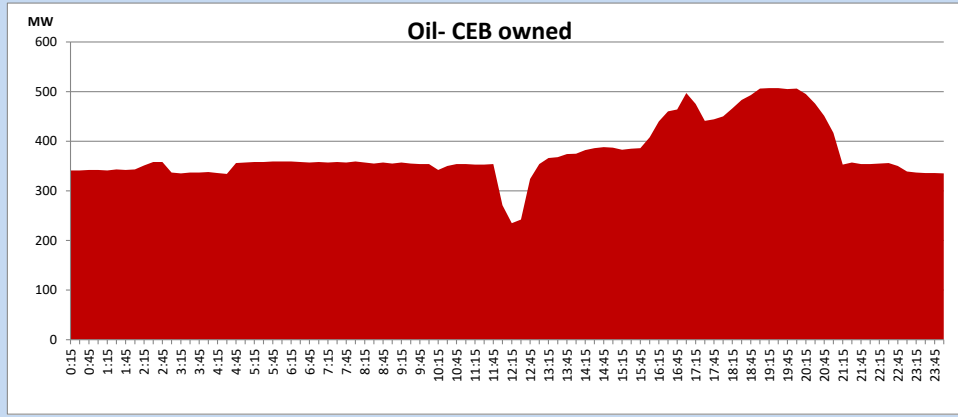
Coal Generation during

March 12, 2024



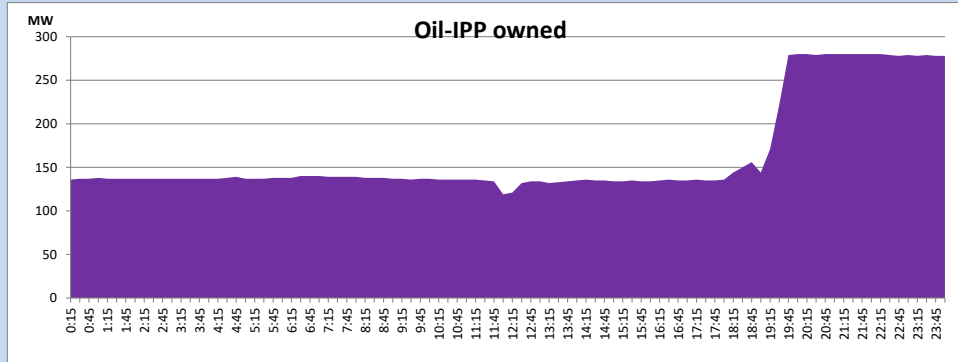
CEB Oil Plant Generation during

March 12, 2024



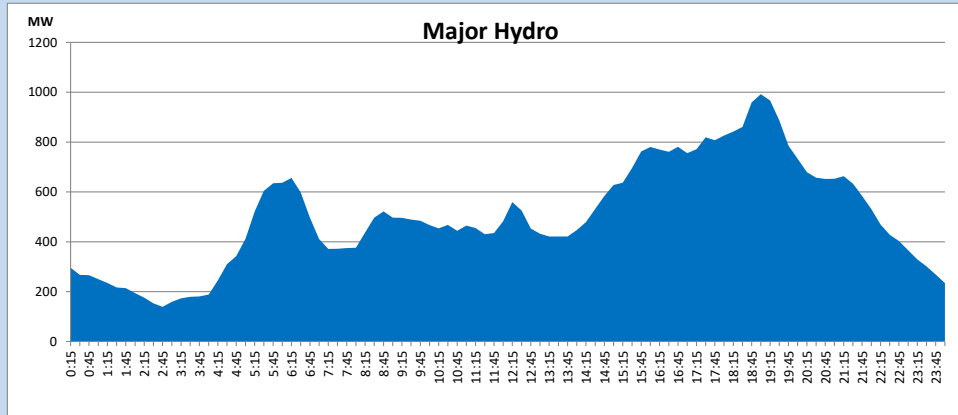
IPP Oil Plant Generation during

March 12, 2024



Major Hydro Generation during

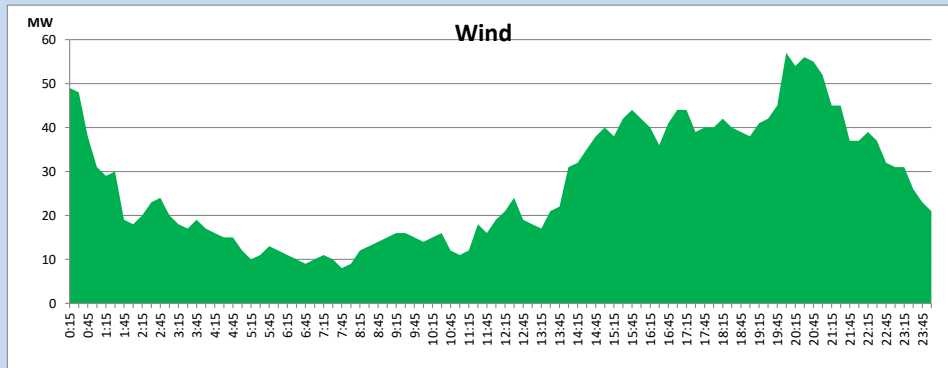
March 12, 2024



Wind Generation during

March 12, 2024

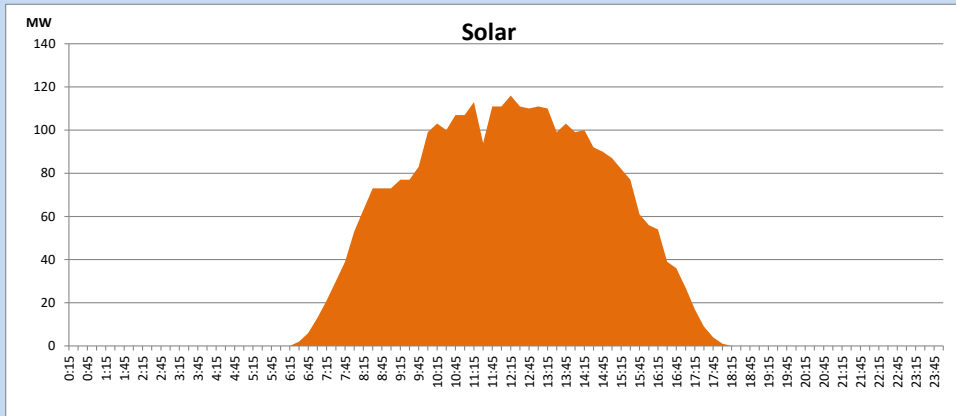
Based on Telemetered Power Stations only



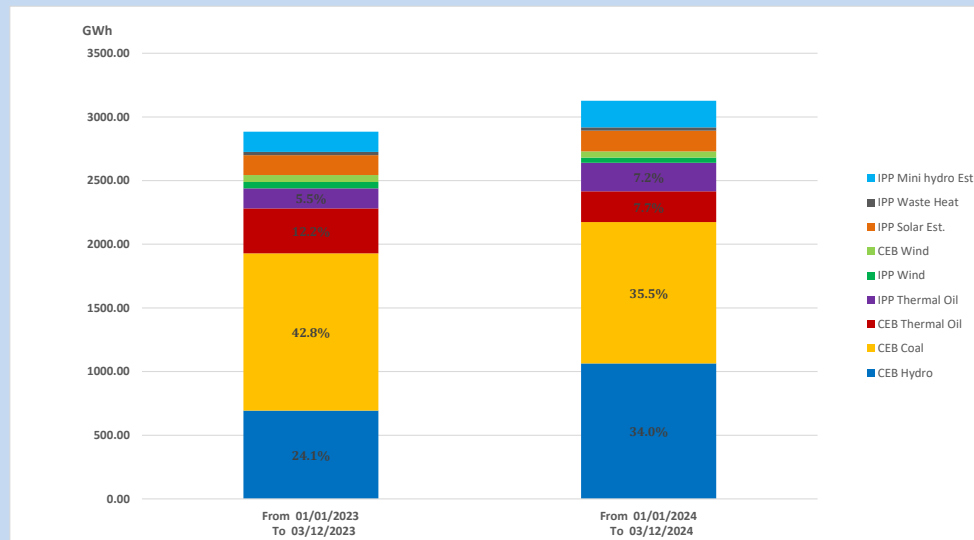
Solar Generation during

March 12, 2024

Based on Telemetered Power Stations only



15. Cumulative Dispatch Comparison with Last Year



Cumulative dispatch

From 01/01/2023 To 03/12/2023

2884 GWh

From 01/01/2024 To 03/12/2024

3126 GWh

The above figures are including contribution from roof top solar, non telemetered solar and mini hydro plants)

Unserviced energy due to power cuts has been excluded in 2023

Thermal Plant Fuel types

Table 08

Power Station	Primary Fuel
CEB Thermal	
Sapugaskanda 1	Heavy Fuel
Sapugaskanda 2	Heavy Fuel
Kelanitissa Small Gas Turbines	Auto Diesel
GT 7 - Kelanitissa	Auto Diesel
Kelanitissa CCY	Naphtha or Diesel
Lakvijaya 1	Coal
Lakvijaya 2	Coal
Lakvijaya 3	Coal
Uthuru Janani	Heavy Fuel
Barge CEB	Heavy Fuel
KCCPS -2	Auto Diesel

Power Station	Primary Fuel
Private Thermal	
West Coast	Auto Diesel / Heavy Fuel
ACE Embilipitiya	Heavy Fuel

Major Incidents reported during the day

March 12, 2024

- 1) Lakvijaya-New Chilaw 220kV cct 01 tripped & A/R from both ends at 12:03hrs due to the operation of differential protection
- 2) New Chilaw-Puttalam 132kV cct 02 tripped & A/R from both ends at 13:26hrs due to the operation of distance protection.
- 3) WCP GT-02 (made unavailable on 11.03.2024) resumed generation at 18:07hrs and performed a forced shutdown again at 01:02hrs (13.03.2024) due to HRSG 02 exhaust gas leak. WCP GT-02 resumed generation at 05:25hrs (13.03.2024).