

Generation and Reservoirs Statistics

March 10, 2024



PUBLIC UTILITIES COMMISSION OF SRI LANKA

1. Daily Generation Mix in MWh

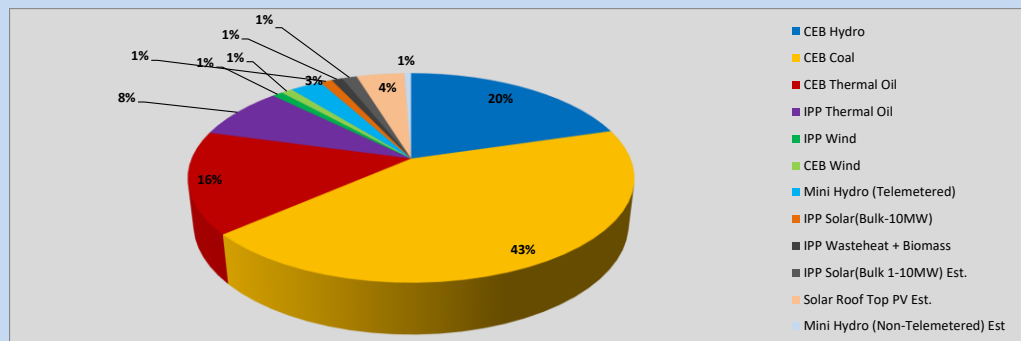


Table 01

	Generation (MWh)
CEB Hydro	8,207
CEB Coal	17,369
CEB Thermal Oil	6,340
IPP Thermal Oil	3,256
IPP Wind	362
CEB Wind	392
Mini Hydro (Telemetered)	1,095
IPP Solar (Bulk)	424
IPP Waste heat + Biomass	382
Total Generation (Excluding estimated figures)	37,827
* Estimated unserved energy	0
* Estimated Mini Hydro (Non telemetered)	233
* Estimated IPP Solar PV (Bulk 1-10MW)	515
* Estimated Solar Roof Top PV	1670
Total Generation (Including estimated figures)	40,245

* Estimated figures of CEB generation report

Table 02

	Installed Capacity (MW)
CEB Hydro	1644
CEB Coal	810
CEB Thermal Oil	773.1
IPP Thermal Oil (West Coast)	270
IPP Wind	163
CEB Wind	100
Mini Hydro	422
IPP Waste heat + Biomass	54
IPP Solar	137
Rooftop Solar (Ordinary)	293
Rooftop Solar (LT Bulk)	272
Rooftop Solar (HT Bulk)	74

Data Source - Monthly Review Report [Nov-2023]

2. Cumulative Dispatch

Following data excludes the contribution from roof top solar, non telemetered solar and mini hydro plants

Table 03 - Current Month

Category	Dispatch (GWh)	
CEB Hydro	102	22.23%
CEB Coal	191	41.68%
CEB Thermal Oil	66	14.46%
IPP Thermal	49	10.68%
SPP Wind	3	0.70%
CEB Wind	4	0.81%
Mini Hydro *	15	3.21%
IPP Solar *	25	5.41%
IPP Waste heat + BMP	4	0.83%
Total	458	

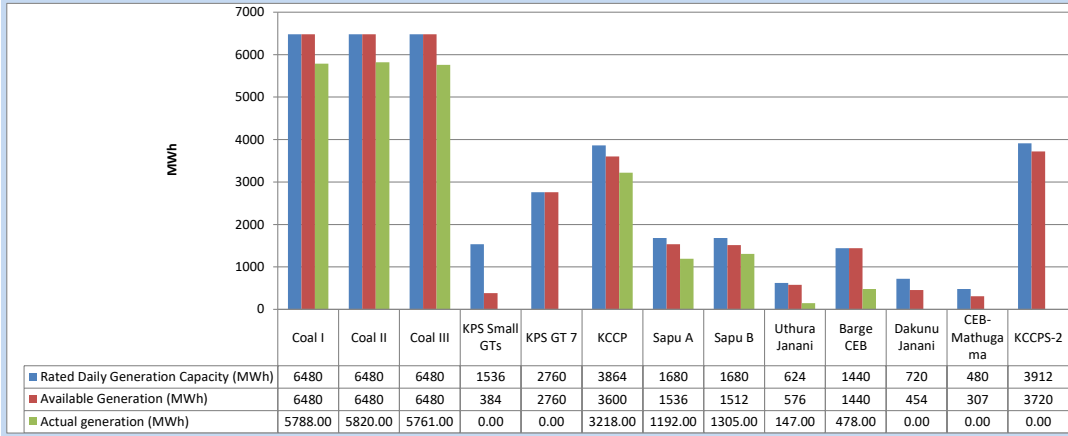
Table 04 - Current Year

Category	Dispatch (GWh)	
CEB Hydro	1,040	34.33%
CEB Coal	1,071	35.35%
CEB Thermal Oil	225	7.42%
IPP Thermal	218	7.18%
SPP Wind	39	1.29%
CEB Wind	48	1.58%
Mini Hydro *	206	6.78%
IPP Solar *	157	5.19%
IPP Waste heat	26	0.86%
Total	3,030	

*Including estimated contribution from non telemetered plants

3. CEB owned Thermal Plant Dispatch

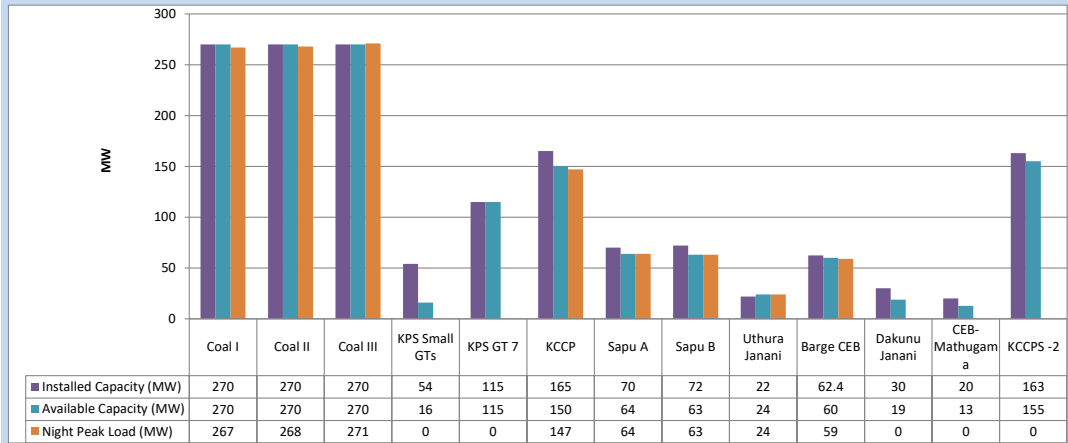
March 10, 2024



Available Generation is estimated based on plant availability at 6.00am on

March 11, 2024

4. CEB owned Thermal Plant Loading at the Night Peak

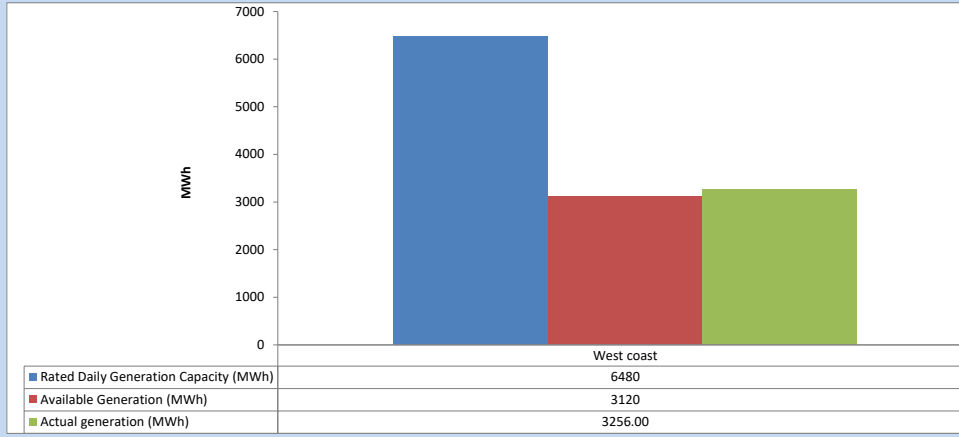


Plant availability is recorded at 6.00 am on

March 11, 2024

5. IPP owned Thermal Plant Dispatch

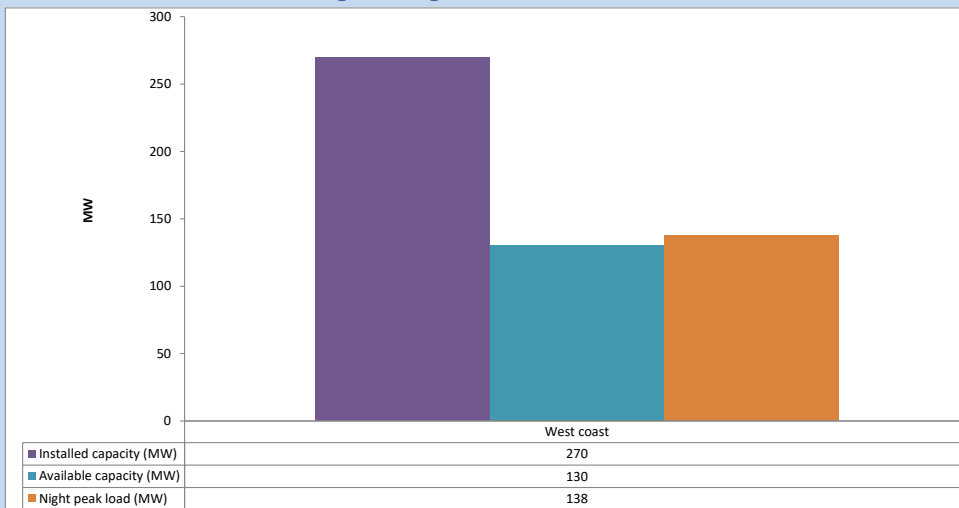
March 10, 2024



Available Generation is estimated based on plant availability at 6.00am on

March 11, 2024

6. IPP owned Thermal Plant Loading at the Night Peak

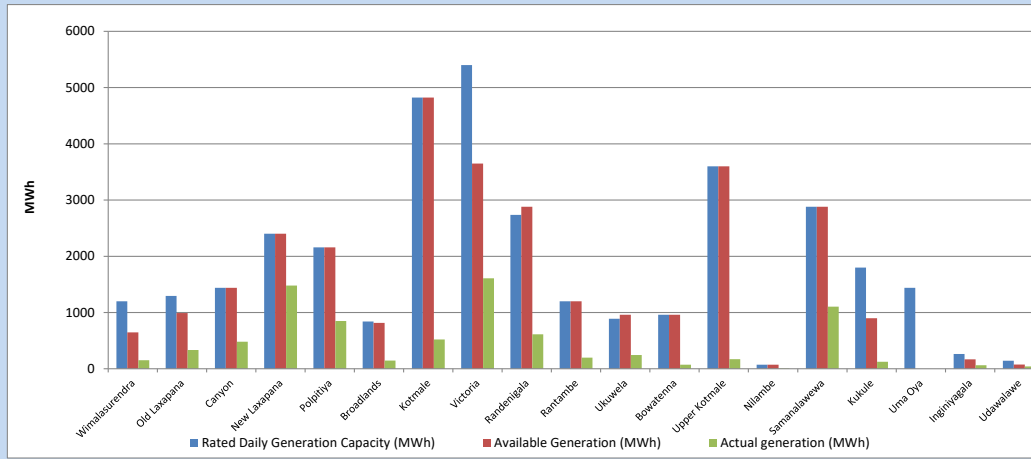


Plant availability is recorded at 6.00 am on

March 11, 2024

7. Major Hydro Plant Dispatch

March 10, 2024

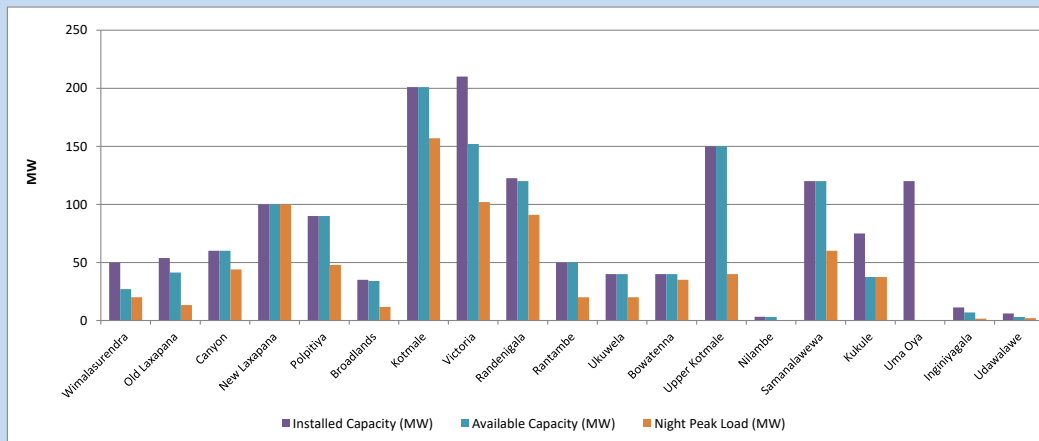


Available Generation is estimated based on plant availability at 6.00am on
Broadlands power plant is operating in the Commissioning Stage

March 11, 2024

8. Major Hydro Plant Loading at Night Peak

March 10, 2024



Plant availability is recorded at 6.00 am on
Broadlands power plant is operating in the Commissioning Stage

March 11, 2024

9. Summary of Major Plant performance

Table 05

Plant	Maximum Available Total Capacity	Plant Availability	Night peak Load	Plant Dispatch
	(MW)	(MW)	(MW)	(MWh)
Wimalasurendra	50	27	20	152
Old Laxapana	54	41	13	333
Canyon	60	60	44	481
New Laxapana	100	100	100	1,479
Polpitiya	90	90	48	850
Broadlands	35	34	12	146
Kotmale	201	201	157	520
Victoria	210	152	102	1,609
Randenigala	123	120	91	612
Rantambe	50	50	20	198
Ukuwela	40	40	20	245
Bowatenna	40	40	35	72
Upper Kotmale	150	150	40	170
Nilambe	3	3	0	7
Samanalawewa	120	120	60	1,106
Kukule	75	38	38	123
Uma Oya (Testing)	120	0	0	0
Inginiyagala	11	7	2	62
Udawalawe	6	3	2	42
Puttalam Coal I	270	270	267	5,788
Puttalam Coal II	270	270	268	5,820
Puttalam Coal III	270	270	271	5,761
KPS Small GTs	54	16	0	0
KPS GT 7	115	115	0	0
KCCP	165	150	147	3,218
Sapugaskanda A	70	64	64	1,192
Sapugaskanda B	72	63	63	1,305
Uthura Janani	22	24	24	147
Barge CEB	62	60	59	478
CEB-Hambantota	30	19	0	0
CEB-Mathugama	20	13	0	0
ACE Matara	24	0	0	0
Asia Power	50	0	0	0
KCCPS -2	163	155	0	0
West Coast	270	130	138	3,256
Nothern Power	36	0	0	0
ACE Embilipitiya	93	0	0	0
Total	3,594	2,895	2,239	37,827

Note-

Plant availability is the availability recorded at 6 am on

March 11, 2024

Installed Capacity is sourced from CEB Annual Report- 2022

10. Contribution to the Night Peak in MW

March 10, 2024

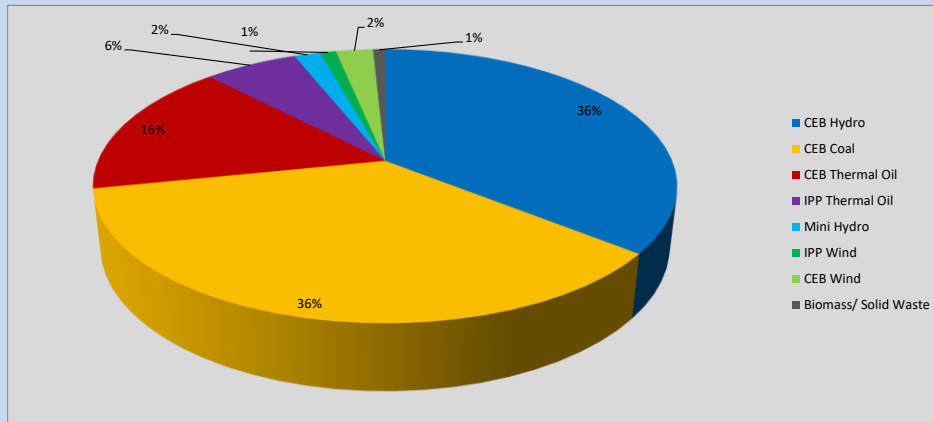


Table 06

CEB Hydro	797	MW
CEB Coal	806	MW
CEB Thermal Oil	357	MW
IPP Thermal Oil	138	MW
Mini Hydro (Telemetered)	39	MW
IPP Wind	23.5	MW
CEB Wind	55	MW
Biomass/ Solid Waste	18	MW

Recorded Peak Demand Data

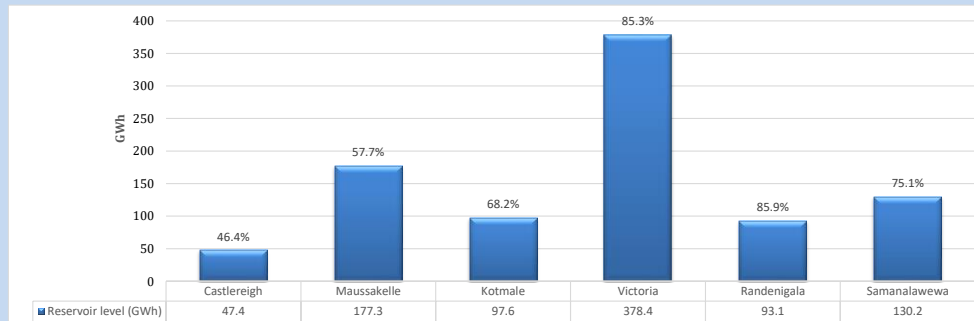
Table 07

Night Peak*	2,233	MW
Day Peak Maximum Demand	1,697	MW
Day Peak Minimum Demand	1,287	MW
Off Peak Minimum Demand	1,426	MW

Above figures are excluding contribution from roof top solar, non telemetered solar and mini hydro plants

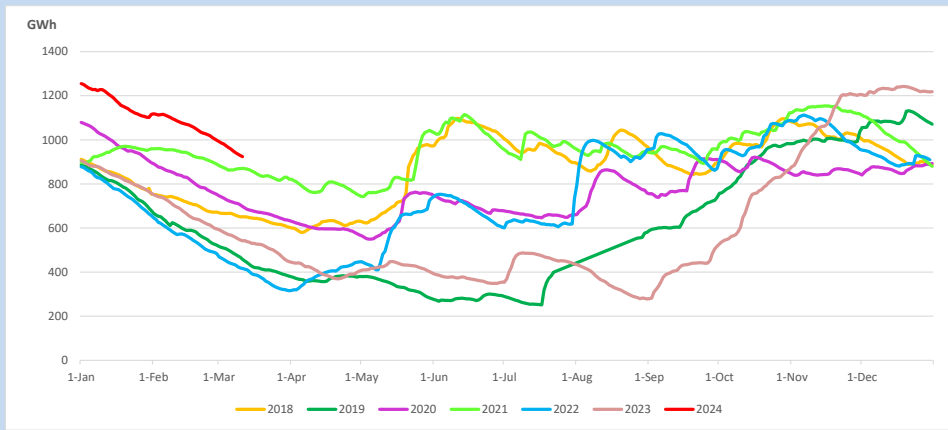
Reservoir Levels -

as at 06.00 Hr on March 11, 2024

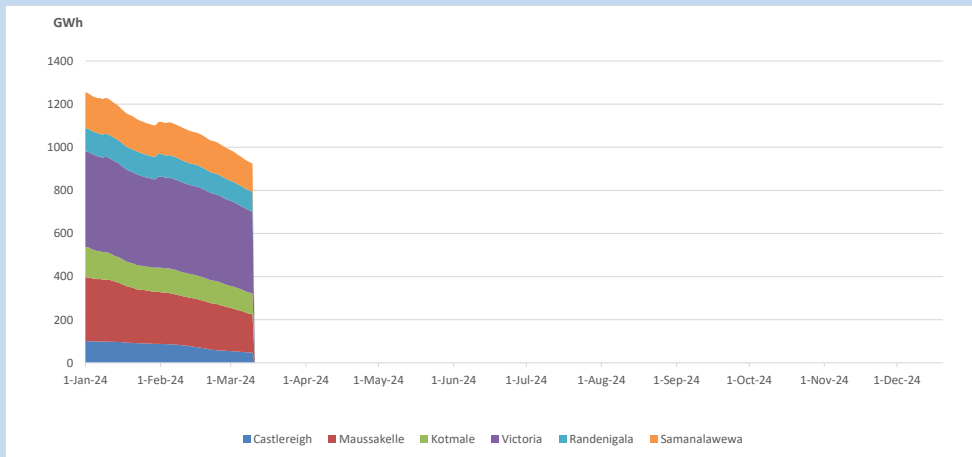


Total Reservoir Level 924 GWh
% of Total capacity 72.3%

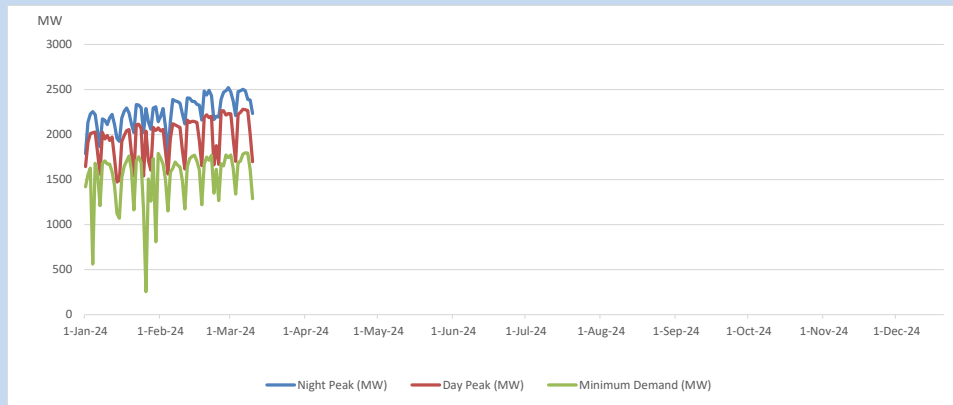
11. Comparison of Total Reservoir Storage Levels with Past Years



12. Variation of Major Hydro Reservoir Levels in the current year (GWh)



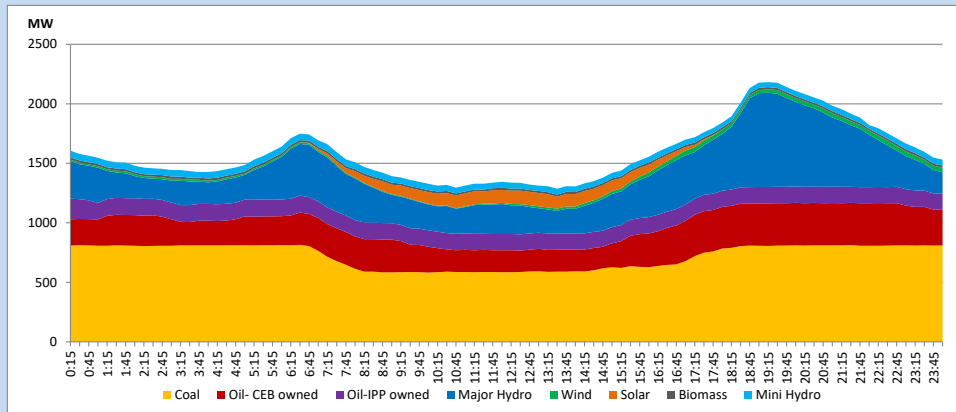
13. Variation of Demand during the current year



The above figures are excluding contribution from roof top solar, non telemetered solar and mini hydro plants

14. Daily Load Curve

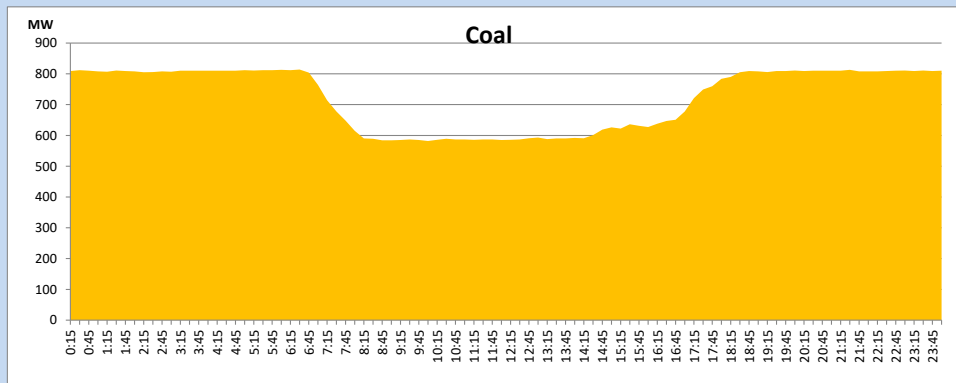
March 10, 2024



Solar and wind data is based on Telemetered Power Stations only

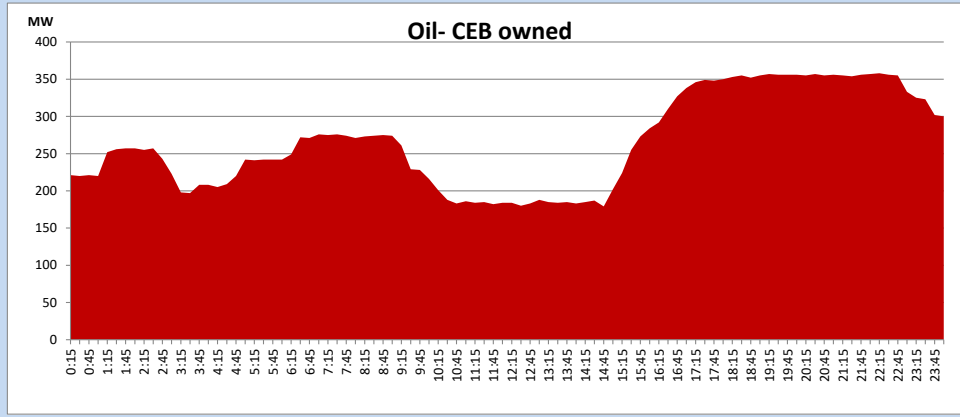
Coal Generation during

March 10, 2024



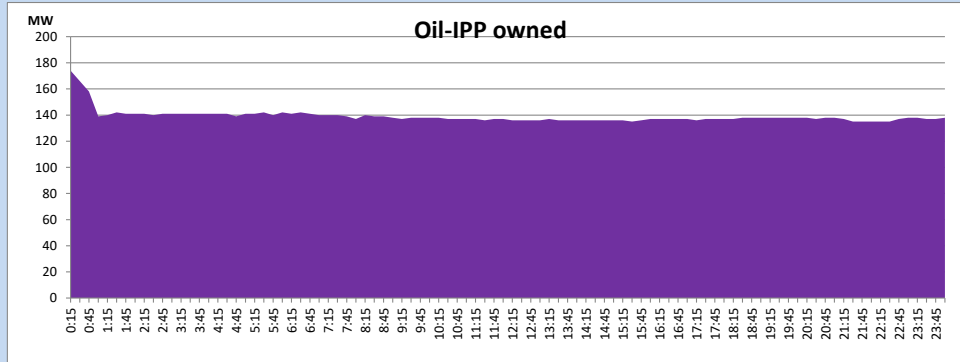
CEB Oil Plant Generation during

March 10, 2024



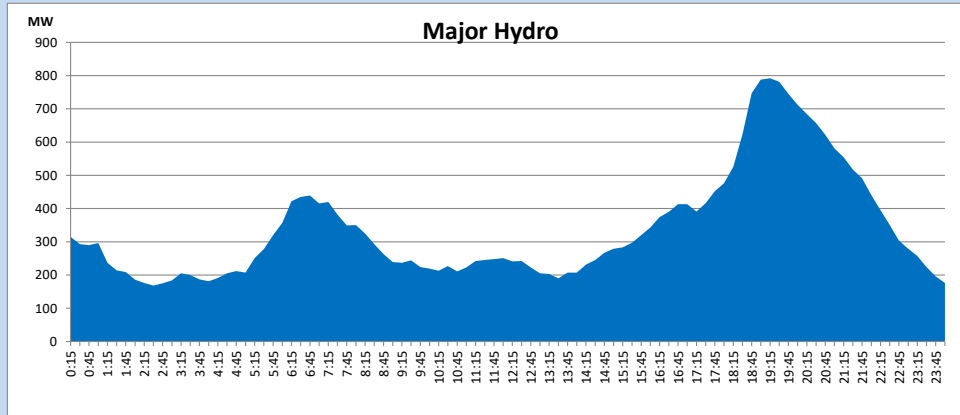
IPP Oil Plant Generation during

March 10, 2024



Major Hydro Generation during

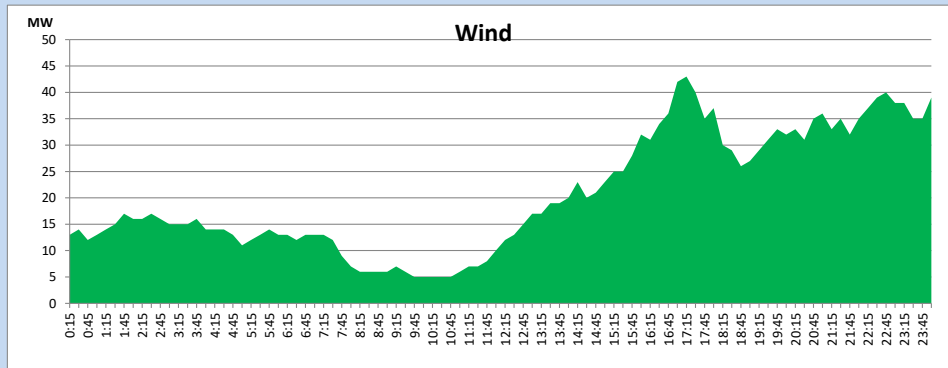
March 10, 2024



Wind Generation during

March 10, 2024

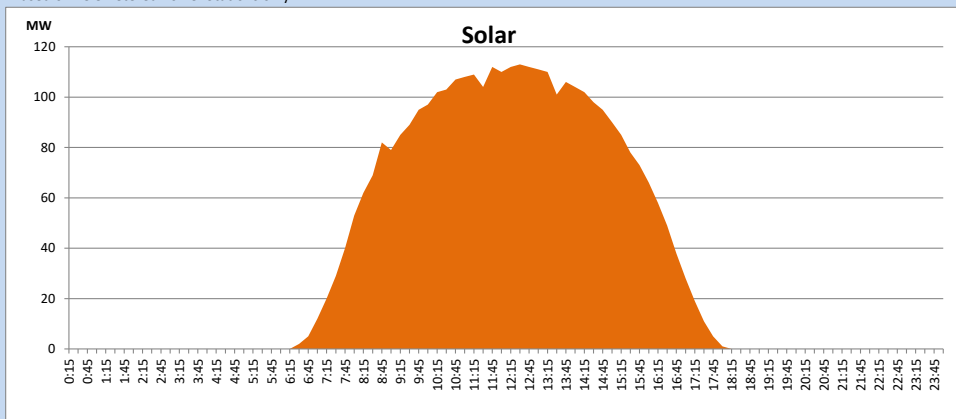
Based on Telemetered Power Stations only



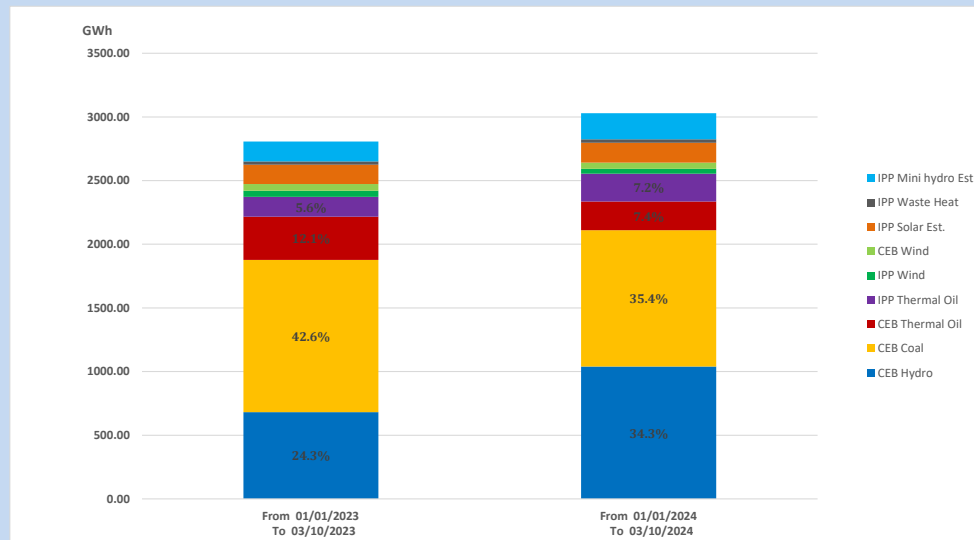
Solar Generation during

March 10, 2024

Based on Telemetered Power Stations only



15. Cumulative Dispatch Comparison with Last Year



Cumulative dispatch
 From 01/01/2023 To 03/10/2023
 From 01/01/2024 To 03/10/2024

2806 GWh
 3030 GWh

The above figures are including contribution from roof top solar, non telemetered solar and mini hydro plants)
 Unused energy due to power cuts has been excluded in 2023

Thermal Plant Fuel types

Table 08

Power Station	Primary Fuel
CEB Thermal	
Sapugaskanda 1	Heavy Fuel
Sapugaskanda 2	Heavy Fuel
Kelanitissa Small Gas Turbines	Auto Diesel
GT 7 - Kelanitissa	Auto Diesel
Kelanitissa CCY	Naphtha or Diesel
Lakvijaya 1	Coal
Lakvijaya 2	Coal
Lakvijaya 3	Coal
Uthuru Janani	Heavy Fuel
Barge CEB	Heavy Fuel
KCCPS -2	Auto Diesel

Power Station	Primary Fuel
Private Thermal	
West Coast	Auto Diesel / Heavy Fuel
ACE Embilipitiya	Heavy Fuel

Major Incidents reported during the day

March 10, 2024

1) Nil.