

# Generation and Reservoirs Statistics

March 8, 2024



PUBLIC UTILITIES COMMISSION OF SRI LANKA

## 1. Daily Generation Mix in MWh

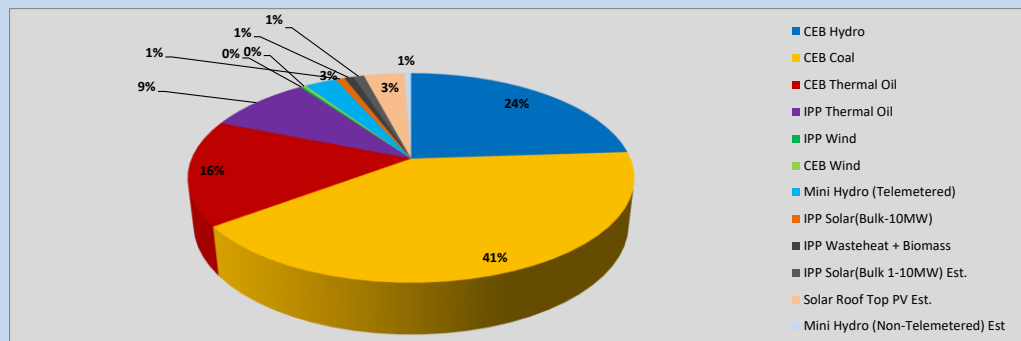


Table 01

	Generation (MWh)
CEB Hydro	11,425
CEB Coal	19,479
CEB Thermal Oil	7,780
IPP Thermal Oil	4,284
IPP Wind	111
CEB Wind	149
Mini Hydro (Telemetered)	1,312
IPP Solar (Bulk)	386
IPP Waste heat + Biomass	367
<b>Total Generation (Excluding estimated figures)</b>	<b>45,293</b>
* Estimated unserved energy	0
* Estimated Mini Hydro (Non telemetered)	280
* Estimated IPP Solar PV (Bulk 1-10MW)	453
* Estimated Solar Roof Top PV	1670
<b>Total Generation (Including estimated figures)</b>	<b>47,696</b>

\* Estimated figures of CEB generation report

Table 02

	Installed Capacity (MW)
CEB Hydro	1644
CEB Coal	810
CEB Thermal Oil	773.1
IPP Thermal Oil (West Coast)	270
IPP Wind	163
CEB Wind	100
Mini Hydro	422
IPP Waste heat + Biomass	54
IPP Solar	137
Rooftop Solar (Ordinary)	293
Rooftop Solar (LT Bulk)	272
Rooftop Solar (HT Bulk)	74

Data Source - Monthly Review Report [Nov-2023]

## 2. Cumulative Dispatch

Following data excludes the contribution from roof top solar, non telemetered solar and mini hydro plants

Table 03 - Current Month

Category	Dispatch (GWh)	
CEB Hydro	84	22.55%
CEB Coal	154	41.26%
CEB Thermal Oil	55	14.68%
IPP Thermal	40	10.72%
SPP Wind	3	0.71%
CEB Wind	3	0.83%
Mini Hydro *	12	3.18%
IPP Solar *	20	5.26%
IPP Waste heat + BMP	3	0.81%
<b>Total</b>	<b>374</b>	

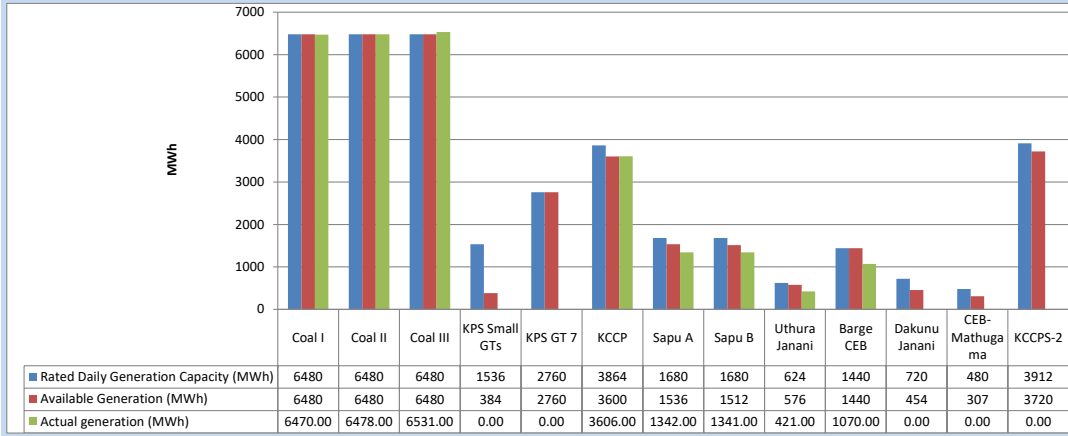
Table 04 - Current Year

Category	Dispatch (GWh)	
CEB Hydro	1,023	34.72%
CEB Coal	1,034	35.12%
CEB Thermal Oil	213	7.25%
IPP Thermal	209	7.09%
SPP Wind	39	1.31%
CEB Wind	47	1.60%
Mini Hydro *	203	6.88%
IPP Solar *	152	5.16%
IPP Waste heat	25	0.86%
<b>Total</b>	<b>2,945</b>	

\*Including estimated contribution from non telemetered plants

### 3. CEB owned Thermal Plant Dispatch

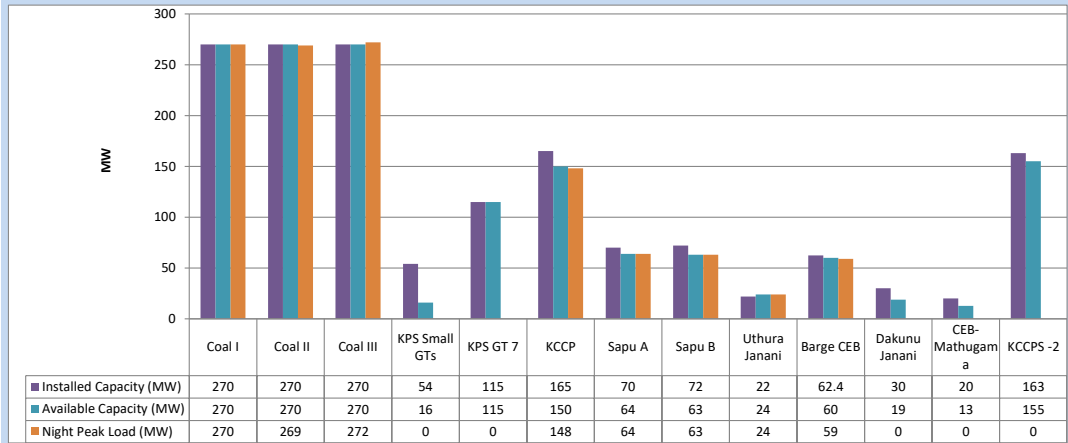
March 8, 2024



Available Generation is estimated based on plant availability at 6.00am on

March 9, 2024

### 4. CEB owned Thermal Plant Loading at the Night Peak

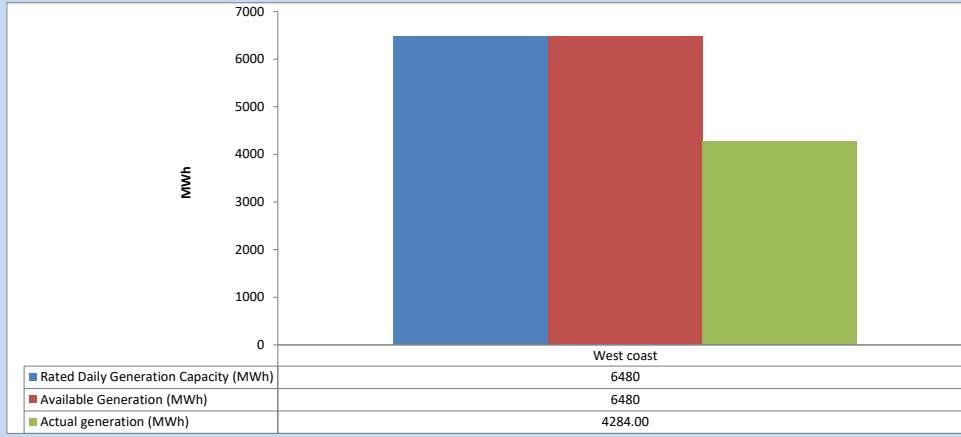


Plant availability is recorded at 6.00 am on

March 9, 2024

### 5. IPP owned Thermal Plant Dispatch

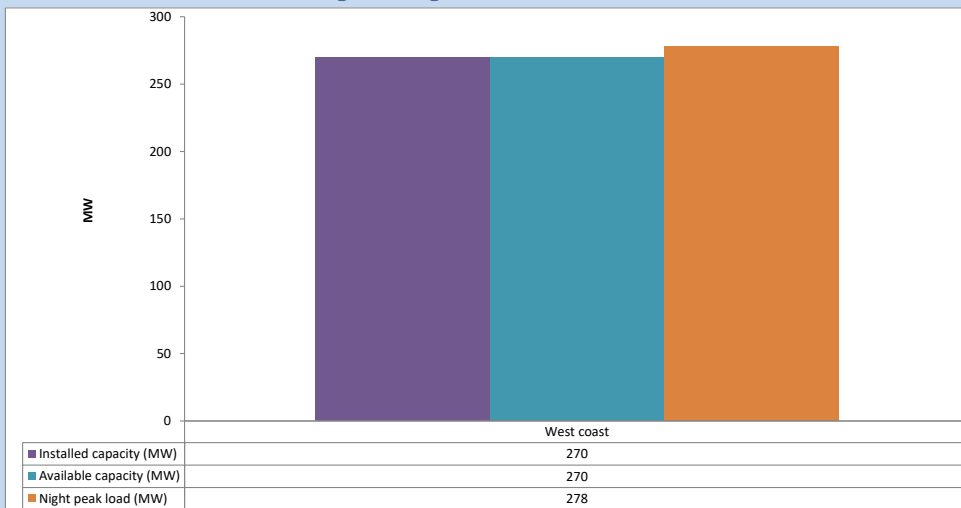
March 8, 2024



Available Generation is estimated based on plant availability at 6.00am on

March 9, 2024

### 6. IPP owned Thermal Plant Loading at the Night Peak

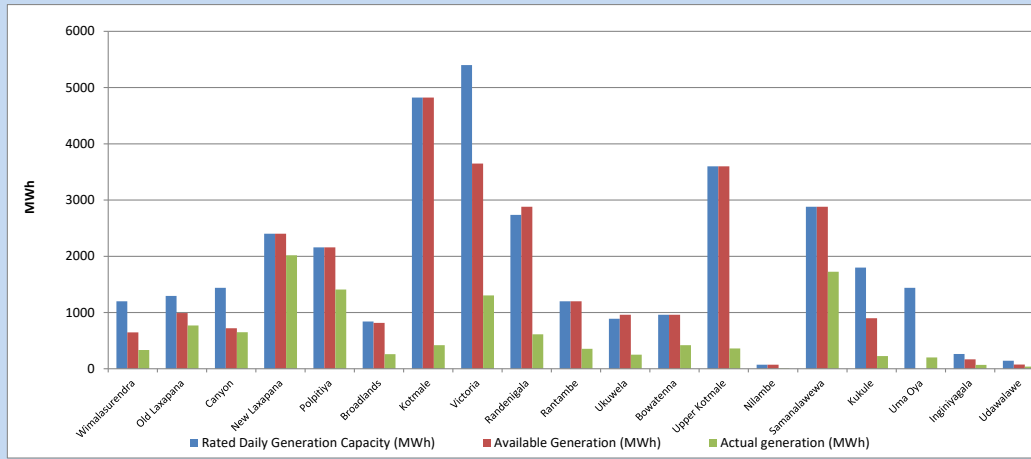


Plant availability is recorded at 6.00 am on

March 9, 2024

### 7. Major Hydro Plant Dispatch

March 8, 2024

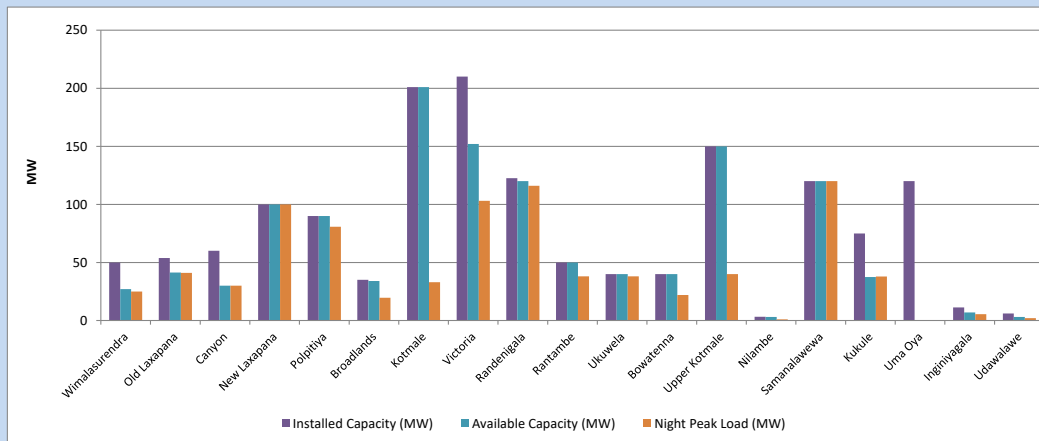


Available Generation is estimated based on plant availability at 6.00am on  
Broadlands power plant is operating in the Commissioning Stage

March 9, 2024

### 8. Major Hydro Plant Loading at Night Peak

March 8, 2024



Plant availability is recorded at 6.00 am on  
Broadlands power plant is operating in the Commissioning Stage

March 9, 2024

## 9. Summary of Major Plant performance

Table 05

Plant	Maximum Available Total Capacity	Plant Availability	Night peak Load	Plant Dispatch
	(MW)	(MW)	(MW)	(MWh)
Wimalasurendra	50	27	25	333
Old Laxapana	54	41	41	770
Canyon	60	30	30	649
New Laxapana	100	100	100	2,017
Polpitiya	90	90	81	1,410
Broadlands	35	34	20	260
Kotmale	201	201	33	420
Victoria	210	152	103	1,303
Randenigala	123	120	116	612
Rantambe	50	50	38	354
Ukuwela	40	40	38	249
Bowatenna	40	40	22	419
Upper Kotmale	150	150	40	362
Nilambe	3	3	1	8
Samanalawewa	120	120	120	1,725
Kukule	75	38	38	227
Uma Oya (Testing )	120	0	0	201
Inginiyagala	11	7	5	68
Udawalawe	6	3	2	38
Puttalam Coal I	270	270	270	6,470
Puttalam Coal II	270	270	269	6,478
Puttalam Coal III	270	270	272	6,531
KPS Small GTs	54	16	0	0
KPS GT 7	115	115	0	0
KCCP	165	150	148	3,606
Sapugaskanda A	70	64	64	1,342
Sapugaskanda B	72	63	63	1,341
Uthura Janani	22	24	24	421
Barge CEB	62	60	59	1,070
CEB-Hambantota	30	19	0	0
CEB-Mathugama	20	13	0	0
ACE Matara	24	0	0	0
Asia Power	50	0	0	0
KCCPS -2	163	155	0	0
West Coast	270	270	278	4,284
Nothern Power	36	0	0	0
ACE Embilipitiya	93	0	0	0
<b>Total</b>	<b>3,594</b>	<b>3,005</b>	<b>2,378</b>	<b>45,293</b>

Note-

Plant availability is the availability recorded at 6 am on

March 9, 2024

Installed Capacity is sourced from CEB Annual Report- 2022

### 10. Contribution to the Night Peak in MW

March 8, 2024

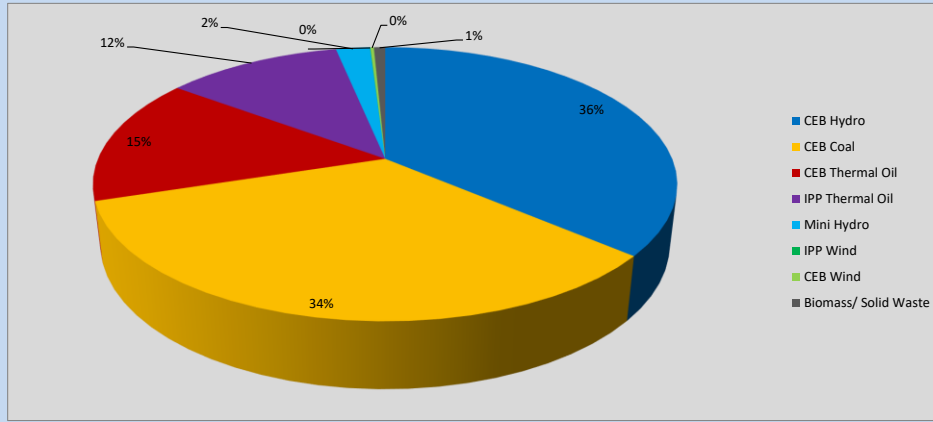


Table 06

CEB Hydro	865	MW
CEB Coal	811	MW
CEB Thermal Oil	358	MW
IPP Thermal Oil	278	MW
Mini Hydro (Telemetered)	54	MW
IPP Wind	0.5	MW
CEB Wind	5.6	MW
Biomass/ Solid Waste	18	MW

### Recorded Peak Demand Data

Table 07

Night Peak*	2,390	MW
Day Peak Maximum Demand	2,265	MW
Day Peak Minimum Demand	1,794	MW
Off Peak Minimum Demand	1,500	MW

Above figures are excluding contribution from roof top solar, non telemetered solar and mini hydro plants

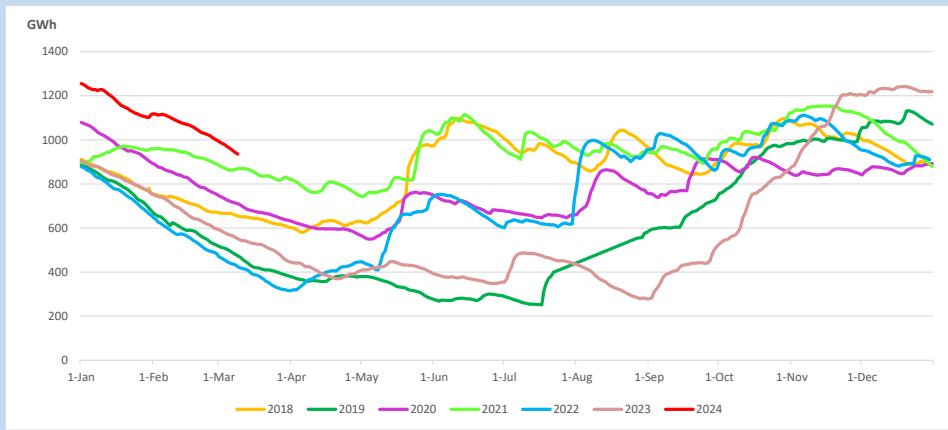
### Reservoir Levels -

as at 06.00 Hr on March 9, 2024

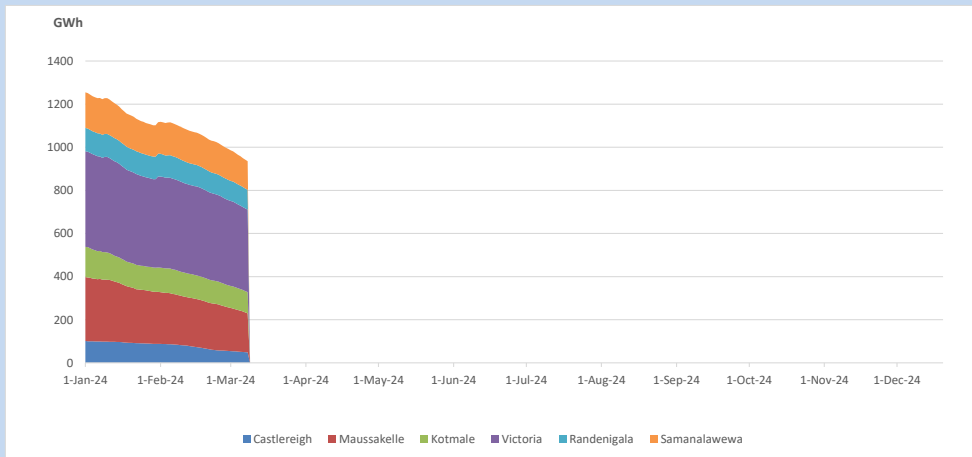


Total Reservoir Level 935.1 GWh  
% of Total capacity 73.2%

### 11. Comparison of Total Reservoir Storage Levels with Past Years

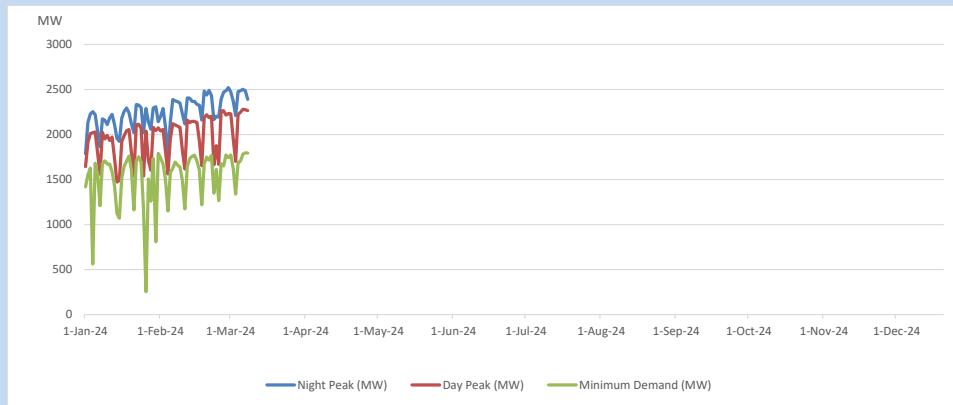


### 12. Variation of Major Hydro Reservoir Levels in the current year (GWh)





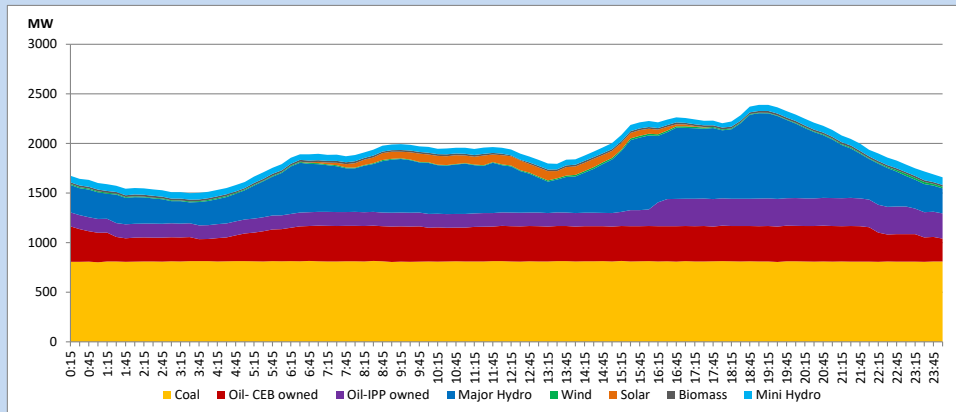
### 13. Variation of Demand during the current year



The above figures are excluding contribution from roof top solar, non telemetered solar and mini hydro plants

### 14. Daily Load Curve

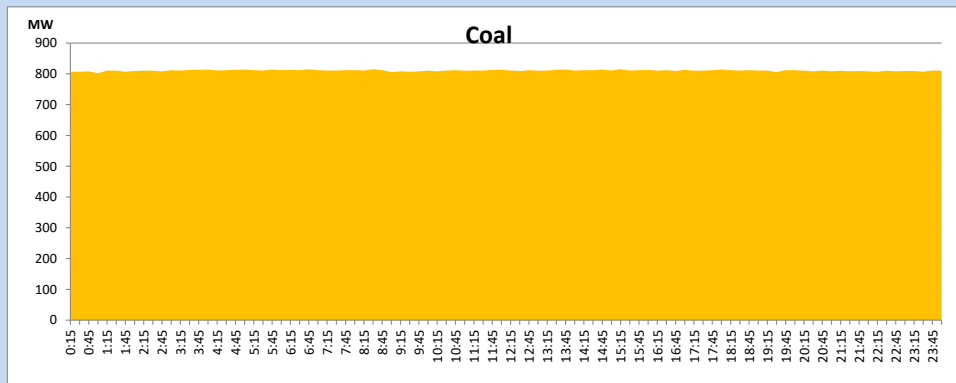
March 8, 2024



Solar and wind data is based on Telemetered Power Stations only

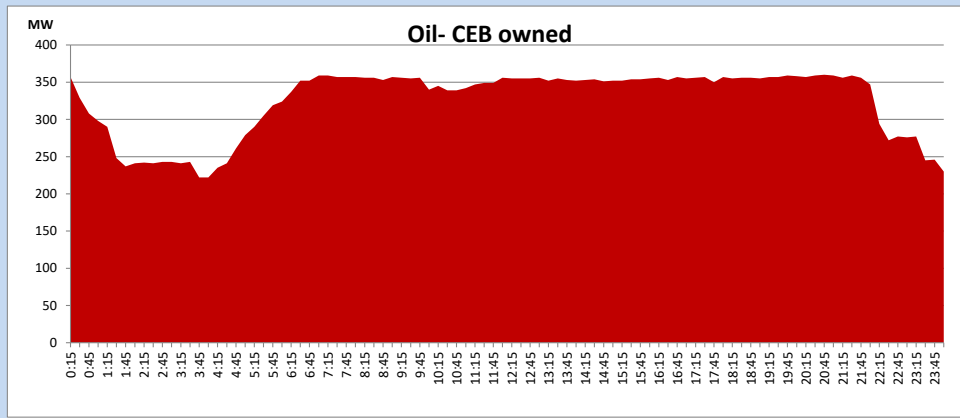
### Coal Generation during

March 8, 2024



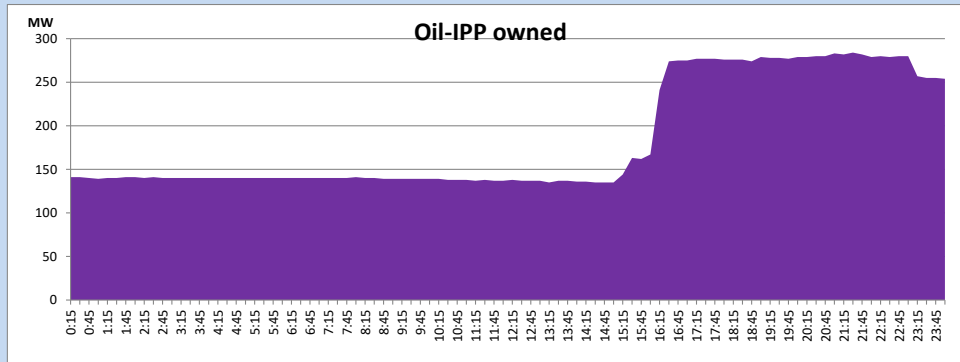
CEB Oil Plant Generation during

March 8, 2024



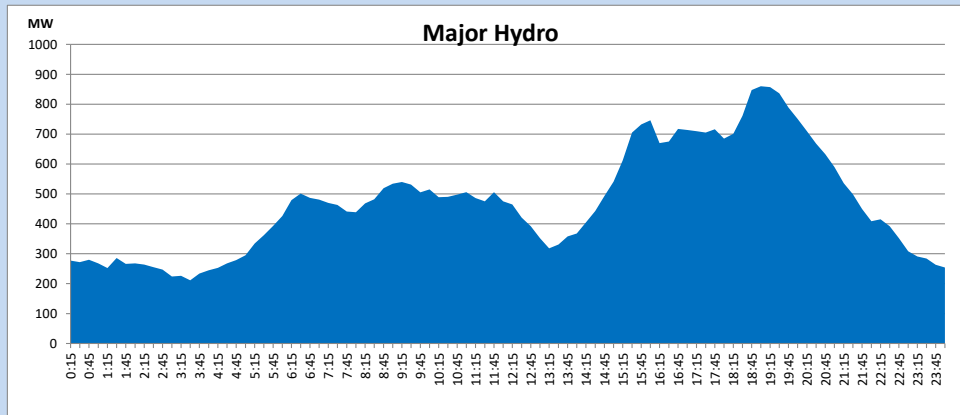
IPP Oil Plant Generation during

March 8, 2024



Major Hydro Generation during

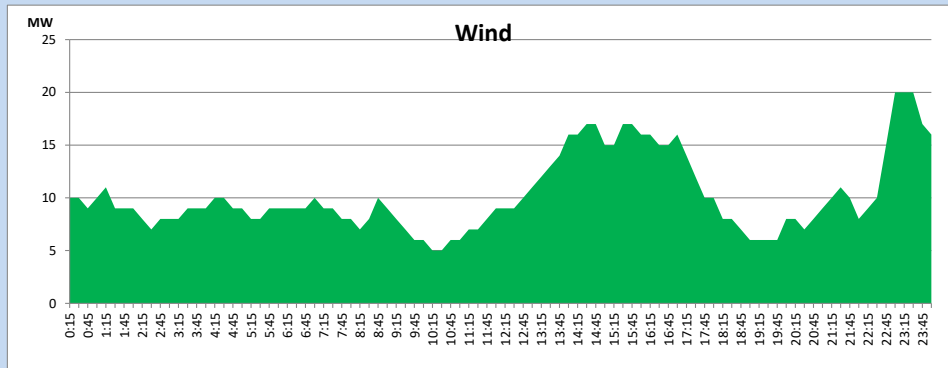
March 8, 2024



## Wind Generation during

March 8, 2024

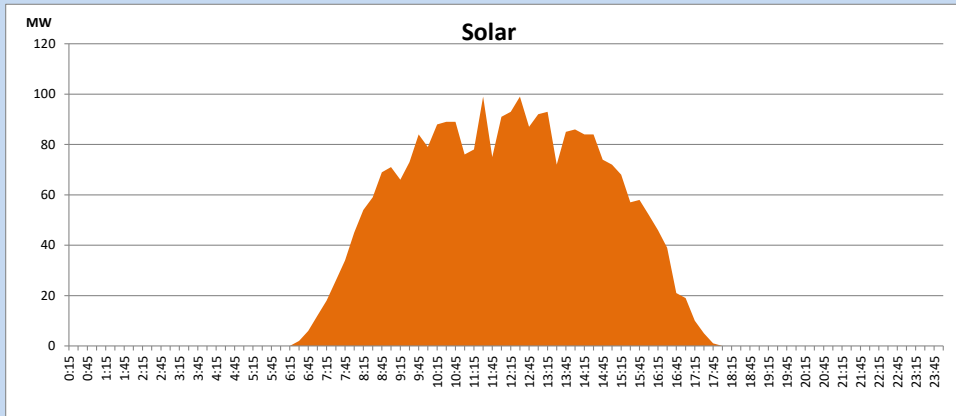
Based on Telemetered Power Stations only



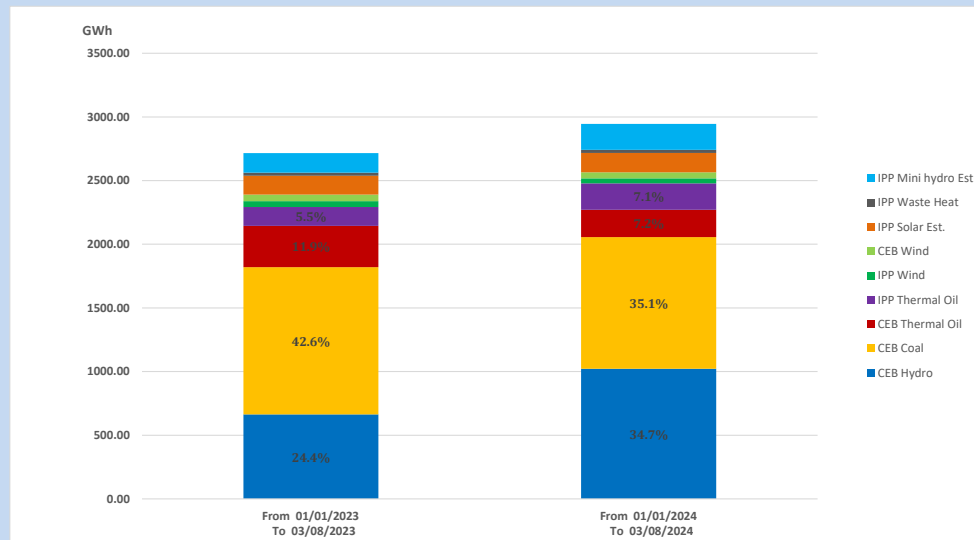
## Solar Generation during

March 8, 2024

Based on Telemetered Power Stations only



## 15. Cumulative Dispatch Comparison with Last Year



### Cumulative dispatch

From 01/01/2023 To 03/08/2023

2716 GWh

From 01/01/2024 To 03/08/2024

2945 GWh

The above figures are including contribution from roof top solar, non telemetered solar and mini hydro plants)

Unserviced energy due to power cuts has been excluded in 2023

Thermal Plant Fuel types

Table 08

Power Station	Primary Fuel
CEB Thermal	
Sapugaskanda 1	Heavy Fuel
Sapugaskanda 2	Heavy Fuel
Kelanitissa Small Gas Turbines	Auto Diesel
GT 7 - Kelanitissa	Auto Diesel
Kelanitissa CCY	Naphtha or Diesel
Lakvijaya 1	Coal
Lakvijaya 2	Coal
Lakvijaya 3	Coal
Uthuru Janani	Heavy Fuel
Barge CEB	Heavy Fuel
KCCPS -2	Auto Diesel

Power Station	Primary Fuel
Private Thermal	
West Coast	Auto Diesel / Heavy Fuel
ACE Embilipitiya	Heavy Fuel

Major Incidents reported during the day

March 8, 2024

1) Nil.