

# Generation and Reservoirs Statistics

March 7, 2024



PUBLIC UTILITIES COMMISSION OF SRI LANKA

## 1. Daily Generation Mix in MWh

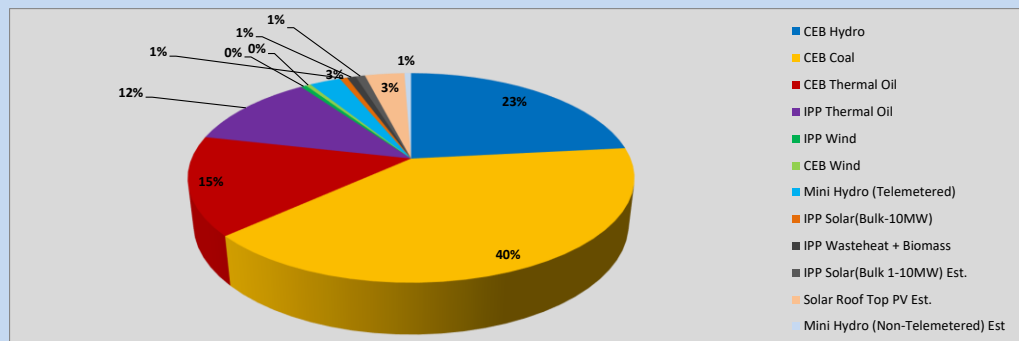


Table 01

	Generation (MWh)
CEB Hydro	11,373
CEB Coal	19,487
CEB Thermal Oil	7,432
IPP Thermal Oil	5,685
IPP Wind	232
CEB Wind	204
Mini Hydro (Telemetered)	1,316
IPP Solar (Bulk)	311
IPP Waste heat + Biomass	372
<b>Total Generation (Excluding estimated figures)</b>	<b>46,412</b>
* Estimated unserved energy	0
* Estimated Mini Hydro (Non telemetered)	280
* Estimated IPP Solar PV (Bulk 1-10MW)	398
* Estimated Solar Roof Top PV	1670
<b>Total Generation (Including estimated figures)</b>	<b>48,760</b>

\* Estimated figures of CEB generation report

Table 02

	Installed Capacity (MW)
CEB Hydro	1644
CEB Coal	810
CEB Thermal Oil	773.1
IPP Thermal Oil (West Coast)	270
IPP Wind	163
CEB Wind	100
Mini Hydro	422
IPP Waste heat + Biomass	54
IPP Solar	137
Rooftop Solar (Ordinary)	293
Rooftop Solar (LT Bulk)	272
Rooftop Solar (HT Bulk)	74

Data Source - Monthly Review Report [Nov-2023]

## 2. Cumulative Dispatch

Following data excludes the contribution from roof top solar, non telemetered solar and mini hydro plants

Table 03 - Current Month

Category	Dispatch (GWh)	
CEB Hydro	73	22.34%
CEB Coal	135	41.32%
CEB Thermal Oil	47	14.44%
IPP Thermal	36	10.98%
SPP Wind	3	0.78%
CEB Wind	3	0.91%
Mini Hydro *	10	3.16%
IPP Solar *	17	5.26%
IPP Waste heat + BMP	3	0.82%
<b>Total</b>	<b>326</b>	

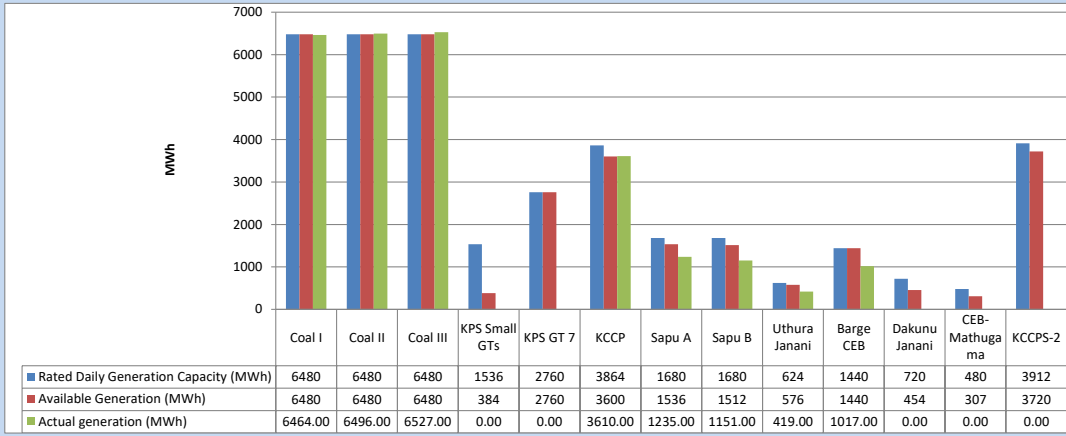
Table 04 - Current Year

Category	Dispatch (GWh)	
CEB Hydro	1,011	34.90%
CEB Coal	1,015	35.02%
CEB Thermal Oil	206	7.10%
IPP Thermal	205	7.06%
SPP Wind	38	1.33%
CEB Wind	47	1.63%
Mini Hydro *	201	6.94%
IPP Solar *	150	5.16%
IPP Waste heat	25	0.86%
<b>Total</b>	<b>2,897</b>	

\*Including estimated contribution from non telemetered plants

### 3. CEB owned Thermal Plant Dispatch

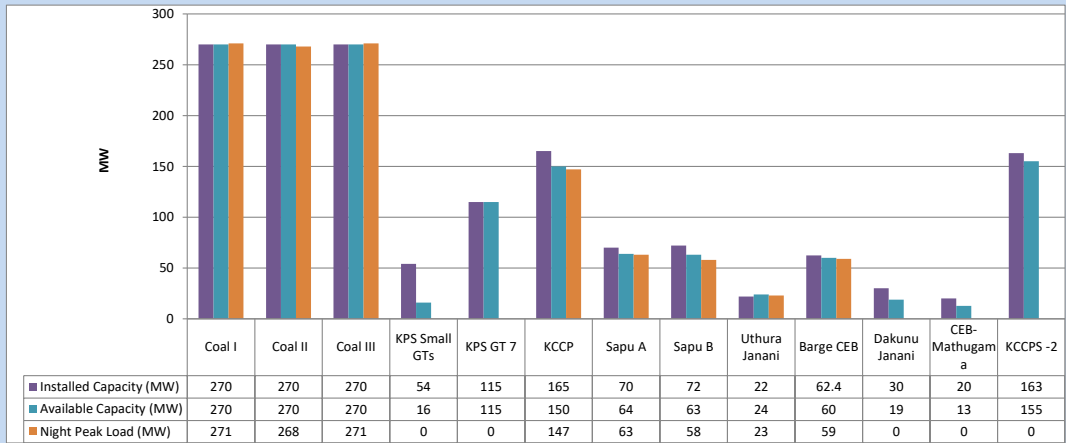
March 7, 2024



Available Generation is estimated based on plant availability at 6.00am on

March 8, 2024

### 4. CEB owned Thermal Plant Loading at the Night Peak

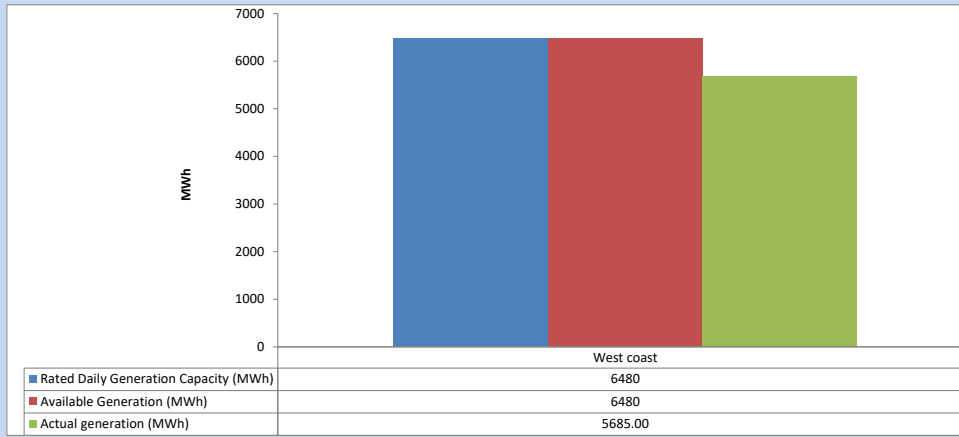


Plant availability is recorded at 6.00 am on

March 8, 2024

### 5. IPP owned Thermal Plant Dispatch

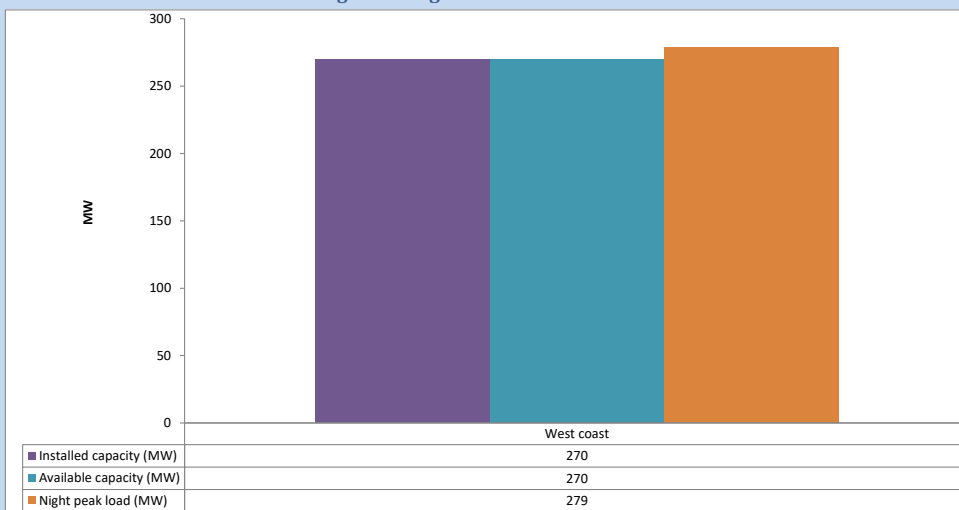
March 7, 2024



Available Generation is estimated based on plant availability at 6.00am on

March 8, 2024

### 6. IPP owned Thermal Plant Loading at the Night Peak

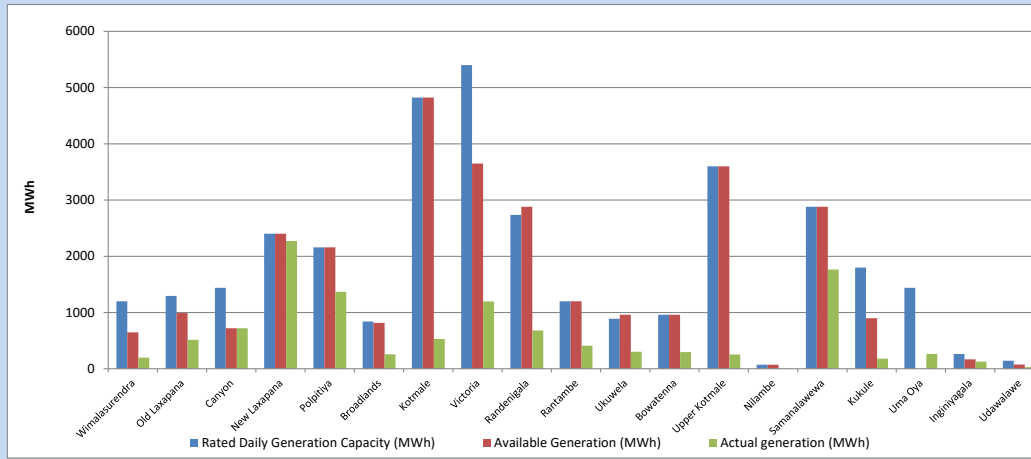


Plant availability is recorded at 6.00 am on

March 8, 2024

### 7. Major Hydro Plant Dispatch

March 7, 2024

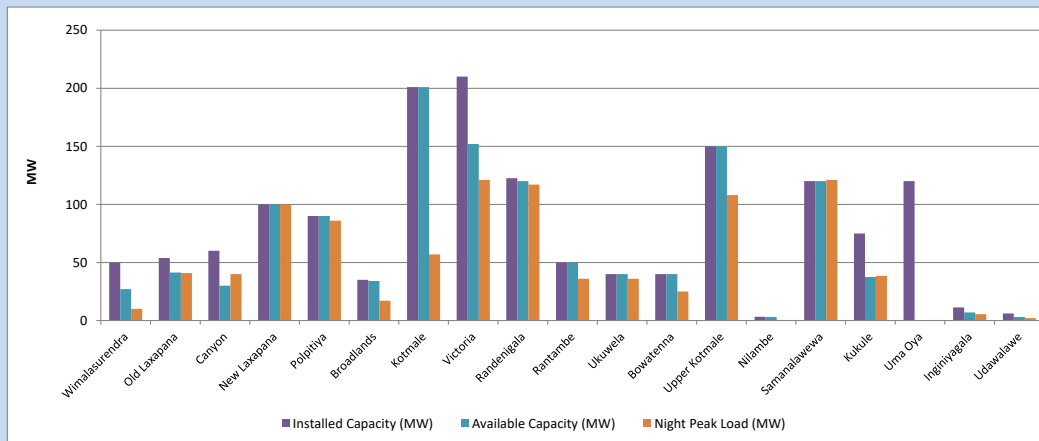


Available Generation is estimated based on plant availability at 6.00am on  
Broadlands power plant is operating in the Commissioning Stage

March 8, 2024

### 8. Major Hydro Plant Loading at Night Peak

March 7, 2024



Plant availability is recorded at 6.00 am on  
Broadlands power plant is operating in the Commissioning Stage

March 8, 2024

## 9. Summary of Major Plant performance

Table 05

Plant	Maximum Available Total Capacity	Plant Availability	Night peak Load	Plant Dispatch
	(MW)	(MW)	(MW)	(MWh)
Wimalasurendra	50	27	10	198
Old Laxapana	54	41	41	516
Canyon	60	30	40	721
New Laxapana	100	100	100	2,272
Polpitiya	90	90	86	1,370
Broadlands	35	34	17	255
Kotmale	201	201	57	530
Victoria	210	152	121	1,198
Randenigala	123	120	117	680
Rantambe	50	50	36	410
Ukuwela	40	40	36	304
Bowatenna	40	40	25	297
Upper Kotmale	150	150	108	254
Nilambe	3	3	0	5
Samanalawewa	120	120	121	1,764
Kukule	75	38	39	179
Uma Oya (Testing )	120	0	0	262
Inginiyagala	11	7	5	128
Udawalawe	6	3	2	30
Puttalam Coal I	270	270	271	6,464
Puttalam Coal II	270	270	268	6,496
Puttalam Coal III	270	270	271	6,527
KPS Small GTs	54	16	0	0
KPS GT 7	115	115	0	0
KCCP	165	150	147	3,610
Sapugaskanda A	70	64	63	1,235
Sapugaskanda B	72	63	58	1,151
Uthura Janani	22	24	23	419
Barge CEB	62	60	59	1,017
CEB-Hambantota	30	19	0	0
CEB-Mathugama	20	13	0	0
ACE Matara	24	0	0	0
Asia Power	50	0	0	0
KCCPS -2	163	155	0	0
West Coast	270	270	279	5,685
Nothern Power	36	0	0	0
ACE Embilipitiya	93	0	0	0
<b>Total</b>	<b>3,594</b>	<b>3,005</b>	<b>2,481</b>	<b>46,412</b>

Note-

Plant availability is the availability recorded at 6 am on

March 8, 2024

Installed Capacity is sourced from CEB Annual Report- 2022

### 10. Contribution to the Night Peak in MW

March 7, 2024

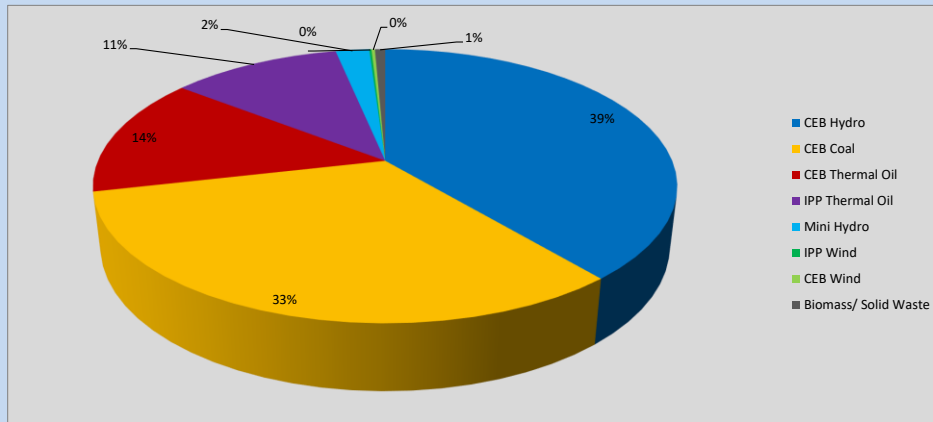


Table 06

CEB Hydro	966	MW
CEB Coal	810	MW
CEB Thermal Oil	350	MW
IPP Thermal Oil	279	MW
Mini Hydro (Telemetered)	55	MW
IPP Wind	3.7	MW
CEB Wind	5.6	MW
Biomass/ Solid Waste	17	MW

### Recorded Peak Demand Data

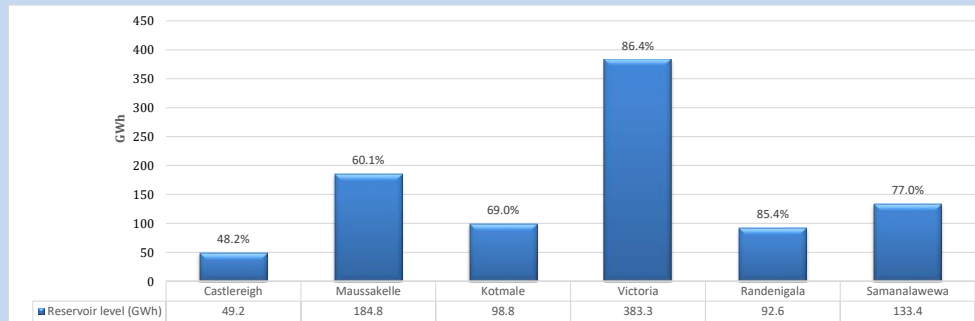
Table 07

Night Peak*	2,486	MW
Day Peak Maximum Demand	2,276	MW
Day Peak Minimum Demand	1,797	MW
Off Peak Minimum Demand	1,497	MW

Above figures are excluding contribution from roof top solar, non telemetered solar and mini hydro plants

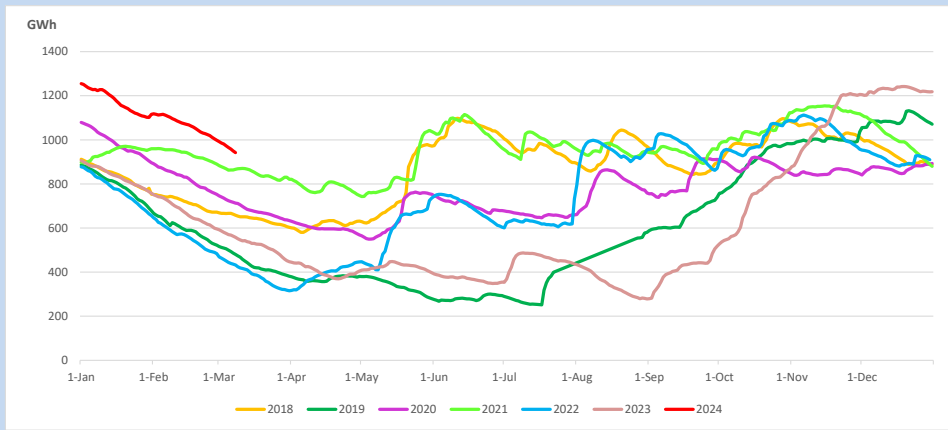
### Reservoir Levels -

as at 06.00 Hr on March 8, 2024

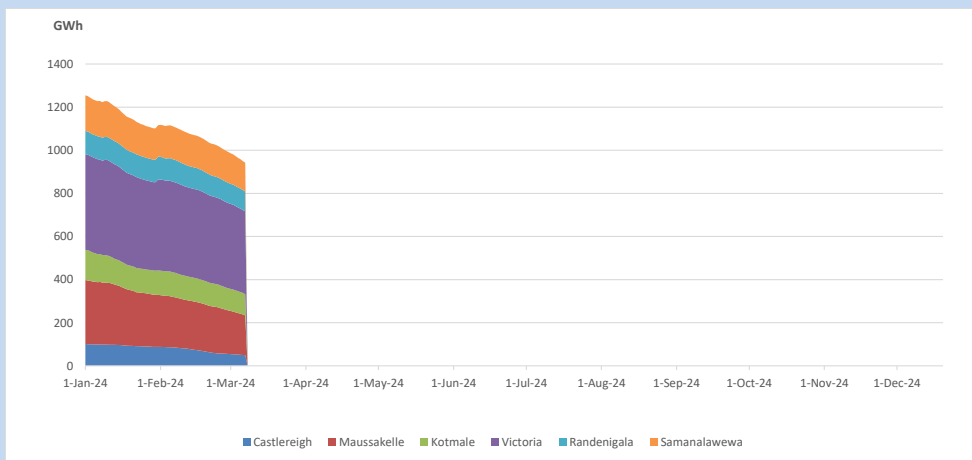


Total Reservoir Level 942.1 GWh  
% of Total capacity 73.7%

### 11. Comparison of Total Reservoir Storage Levels with Past Years

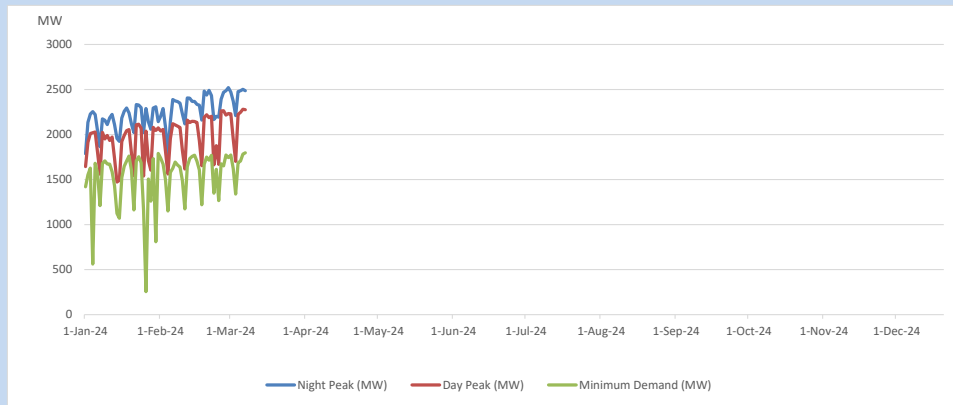


### 12. Variation of Major Hydro Reservoir Levels in the current year (GWh)





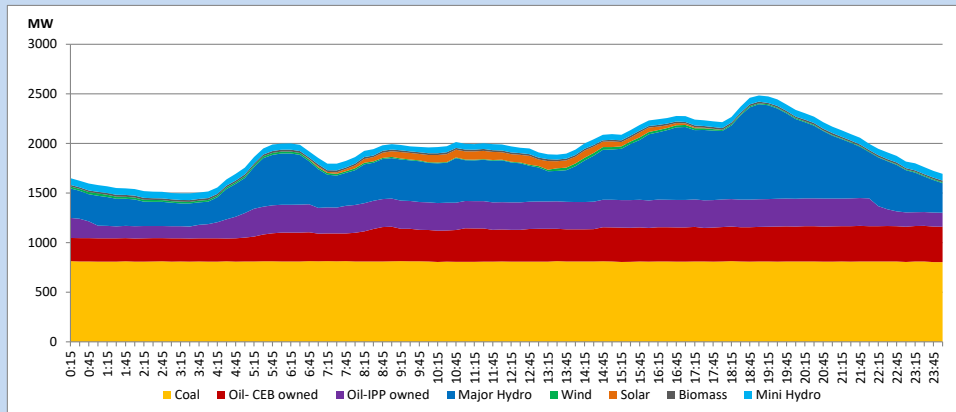
### 13. Variation of Demand during the current year



The above figures are excluding contribution from roof top solar, non telemetered solar and mini hydro plants

### 14. Daily Load Curve

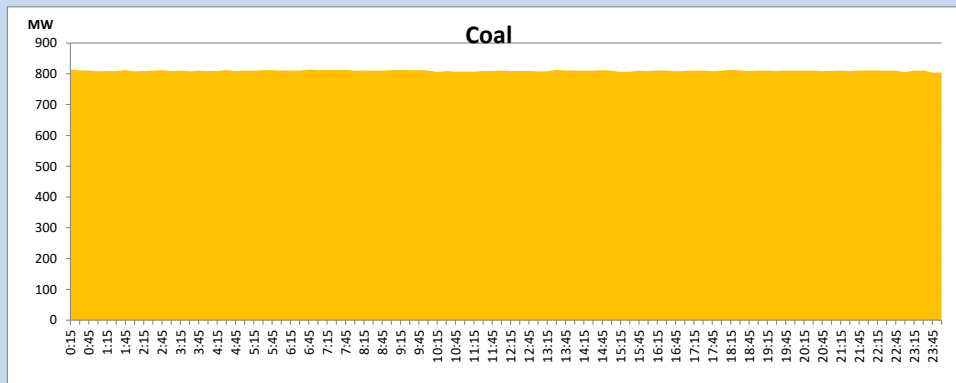
March 7, 2024



Solar and wind data is based on Telemetered Power Stations only

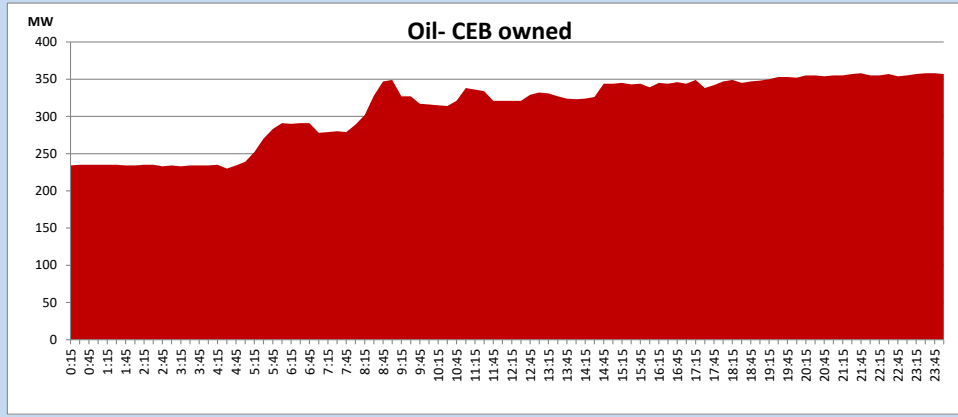
### Coal Generation during

March 7, 2024



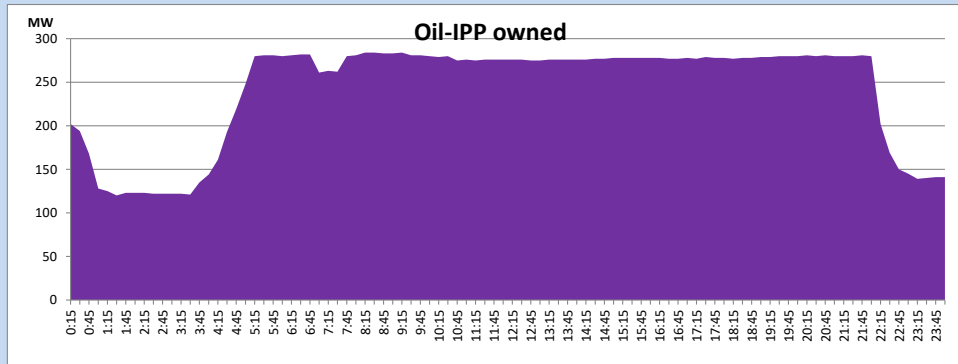
CEB Oil Plant Generation during

March 7, 2024



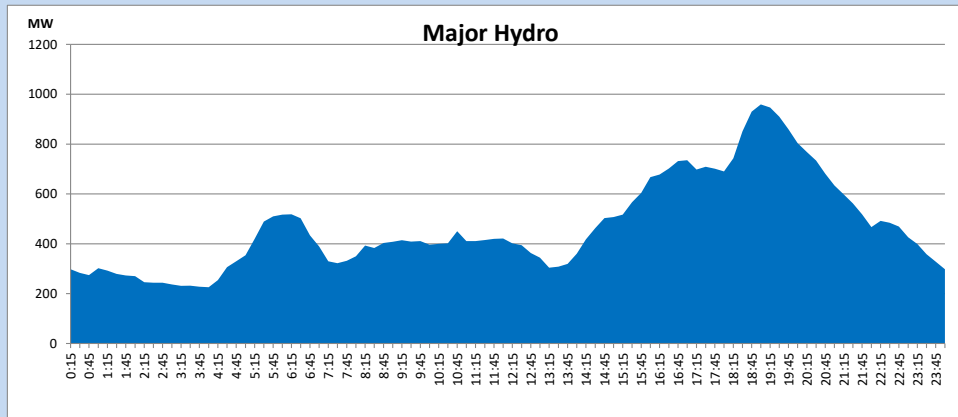
IPP Oil Plant Generation during

March 7, 2024



Major Hydro Generation during

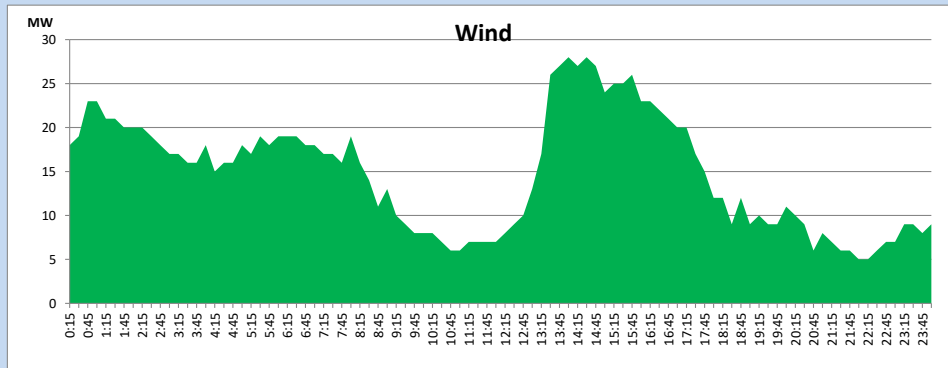
March 7, 2024



### Wind Generation during

March 7, 2024

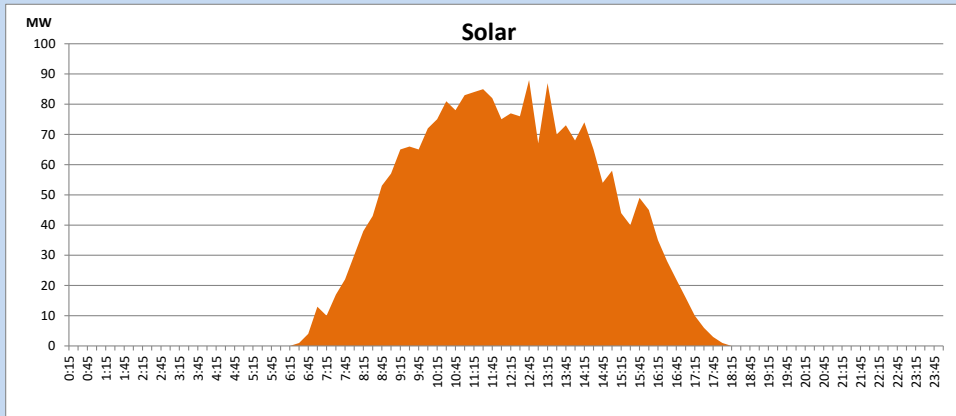
Based on Telemetered Power Stations only



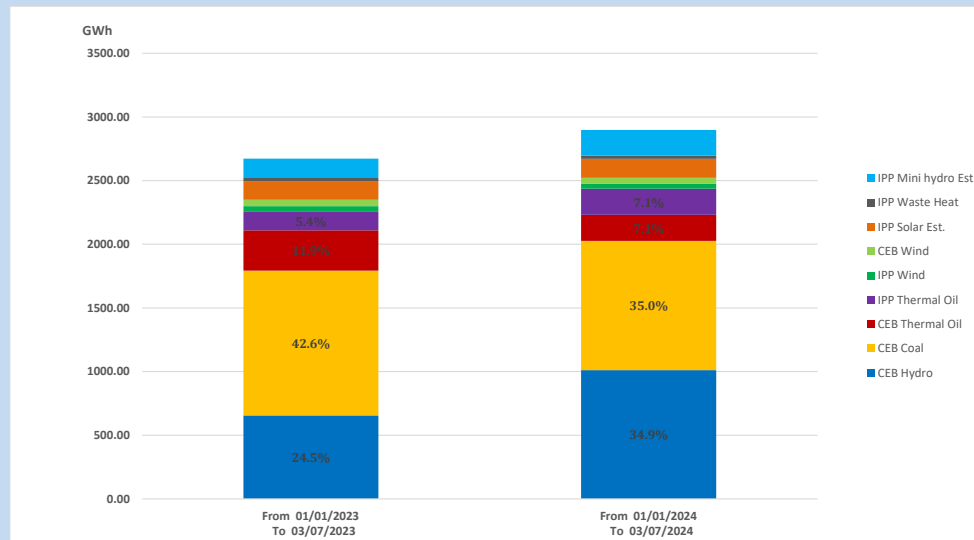
### Solar Generation during

March 7, 2024

Based on Telemetered Power Stations only



### 15. Cumulative Dispatch Comparison with Last Year



Cumulative dispatch  
 From 01/01/2023 To 03/07/2023  
 From 01/01/2024 To 03/07/2024

2672 GWh  
 2897 GWh

The above figures are including contribution from roof top solar, non telemetered solar and mini hydro plants)  
 Unused energy due to power cuts has been excluded in 2023

Thermal Plant Fuel types

Table 08

Power Station	Primary Fuel
CEB Thermal	
Sapugaskanda 1	Heavy Fuel
Sapugaskanda 2	Heavy Fuel
Kelanitissa Small Gas Turbines	Auto Diesel
GT 7 - Kelanitissa	Auto Diesel
Kelanitissa CCY	Naphtha or Diesel
Lakvijaya 1	Coal
Lakvijaya 2	Coal
Lakvijaya 3	Coal
Uthuru Janani	Heavy Fuel
Barge CEB	Heavy Fuel
KCCPS -2	Auto Diesel

Power Station	Primary Fuel
Private Thermal	
West Coast	Auto Diesel / Heavy Fuel
ACE Embilipitiya	Heavy Fuel

Major Incidents reported during the day

March 7, 2024

1) Nil.