

Generation and Reservoirs Statistics

March 6, 2024



PUBLIC UTILITIES COMMISSION OF SRI LANKA

1. Daily Generation Mix in MWh

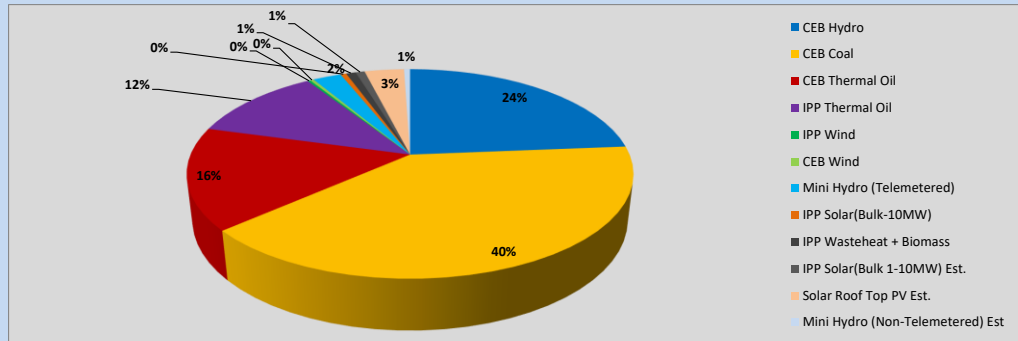


Table 01

	Generation (MWh)
CEB Hydro	11,587
CEB Coal	19,443
CEB Thermal Oil	7,709
IPP Thermal Oil	5,682
IPP Wind	121
CEB Wind	152
Mini Hydro (Telemetered)	1,203
IPP Solar (Bulk)	245
IPP Waste heat + Biomass	408
Total Generation (Excluding estimated figures)	46,550
* Estimated unserved energy	0
* Estimated Mini Hydro (Non telemetered)	256
* Estimated IPP Solar PV (Bulk 1-10MW)	385
* Estimated Solar Roof Top PV	1670
Total Generation (Including estimated figures)	48,861

* Estimated figures of CEB generation report

Table 02

	Installed Capacity (MW)
CEB Hydro	1644
CEB Coal	810
CEB Thermal Oil	773.1
IPP Thermal Oil (West Coast)	270
IPP Wind	163
CEB Wind	100
Mini Hydro	422
IPP Waste heat + Biomass	54
IPP Solar	137
Rooftop Solar (Ordinary)	293
Rooftop Solar (LT Bulk)	272
Rooftop Solar (HT Bulk)	74

Data Source - Monthly Review Report [Nov-2023]

2. Cumulative Dispatch

Following data excludes the contribution from roof top solar, non telemetered solar and mini hydro plants

Table 03 - Current Month

Category	Dispatch (GWh)	
CEB Hydro	61	22.17%
CEB Coal	115	41.56%
CEB Thermal Oil	40	14.30%
IPP Thermal	30	10.85%
SPP Wind	2	0.83%
CEB Wind	3	0.99%
Mini Hydro *	9	3.14%
IPP Solar *	15	5.33%
IPP Waste heat + BMP	2	0.83%
Total	277	

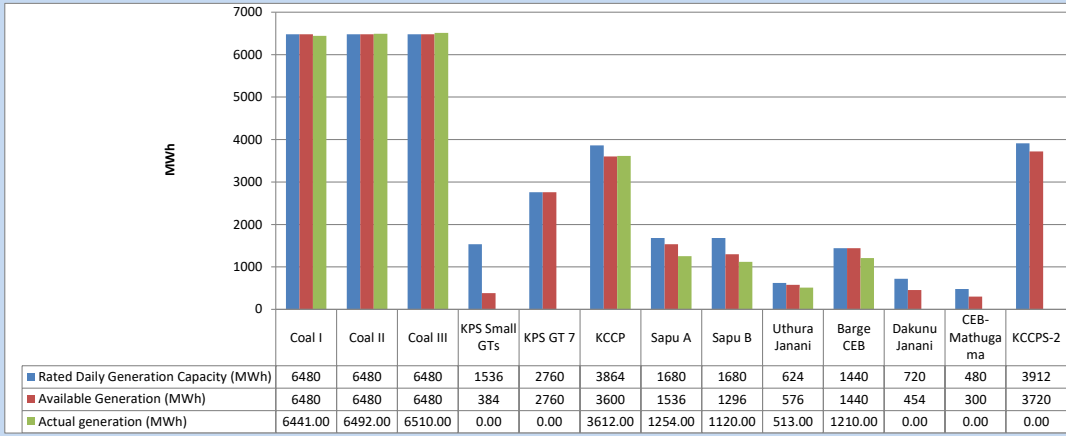
Table 04 - Current Year

Category	Dispatch (GWh)	
CEB Hydro	1,000	35.10%
CEB Coal	995	34.94%
CEB Thermal Oil	198	6.96%
IPP Thermal	199	6.98%
SPP Wind	38	1.34%
CEB Wind	47	1.65%
Mini Hydro *	200	7.00%
IPP Solar *	147	5.17%
IPP Waste heat	25	0.87%
Total	2,848	

*Including estimated contribution from non telemetered plants

3. CEB owned Thermal Plant Dispatch

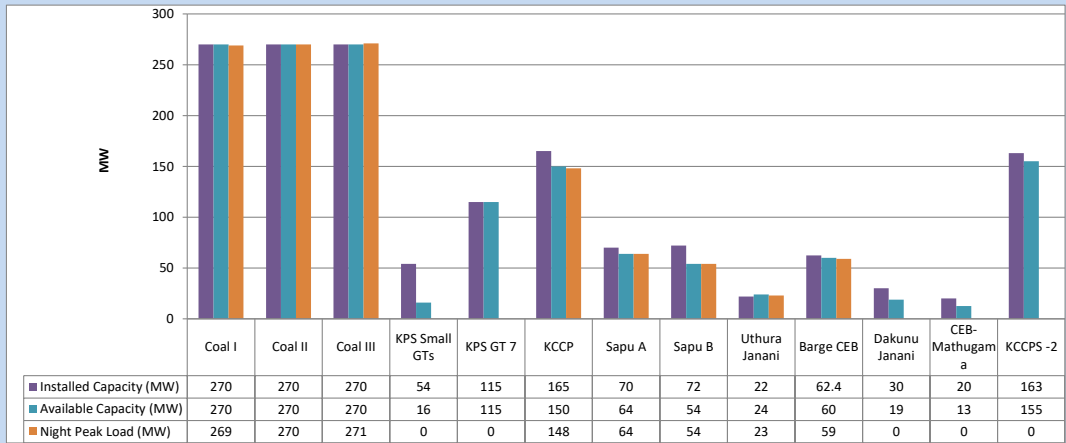
March 6, 2024



Available Generation is estimated based on plant availability at 6.00am on

March 7, 2024

4. CEB owned Thermal Plant Loading at the Night Peak

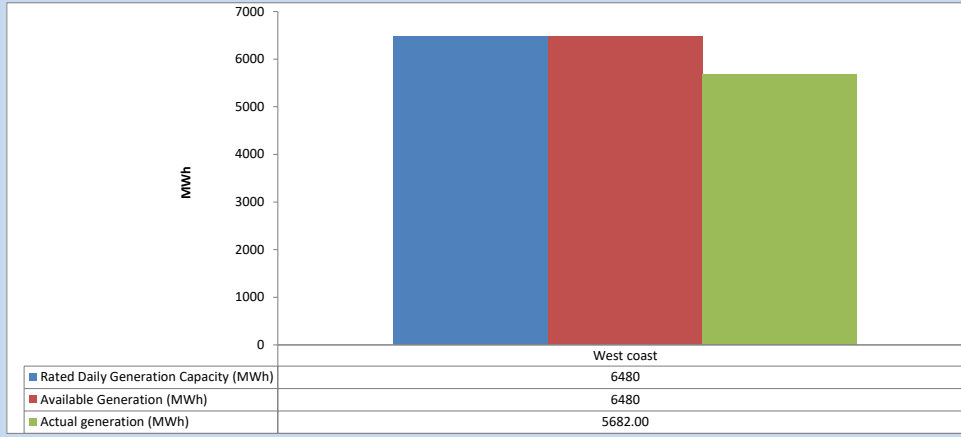


Plant availability is recorded at 6.00 am on

March 7, 2024

5. IPP owned Thermal Plant Dispatch

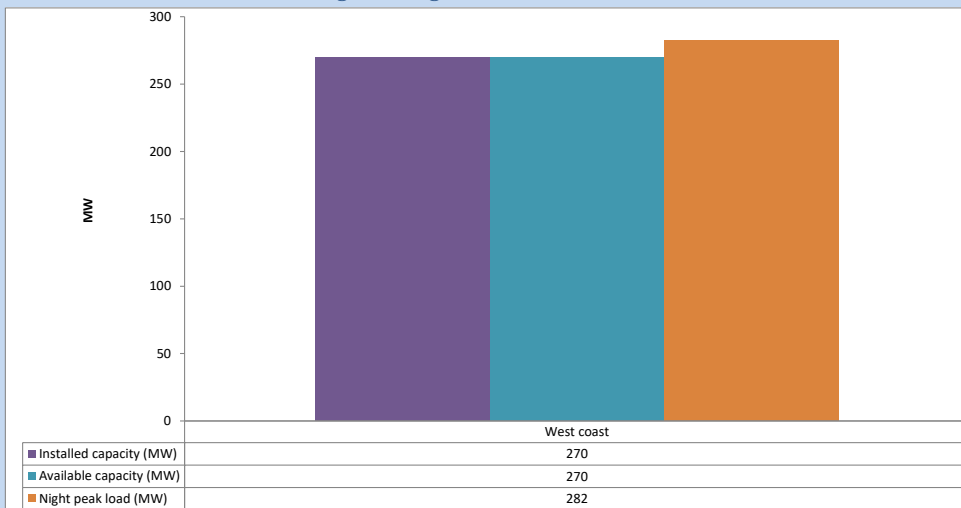
March 6, 2024



Available Generation is estimated based on plant availability at 6.00am on

March 7, 2024

6. IPP owned Thermal Plant Loading at the Night Peak

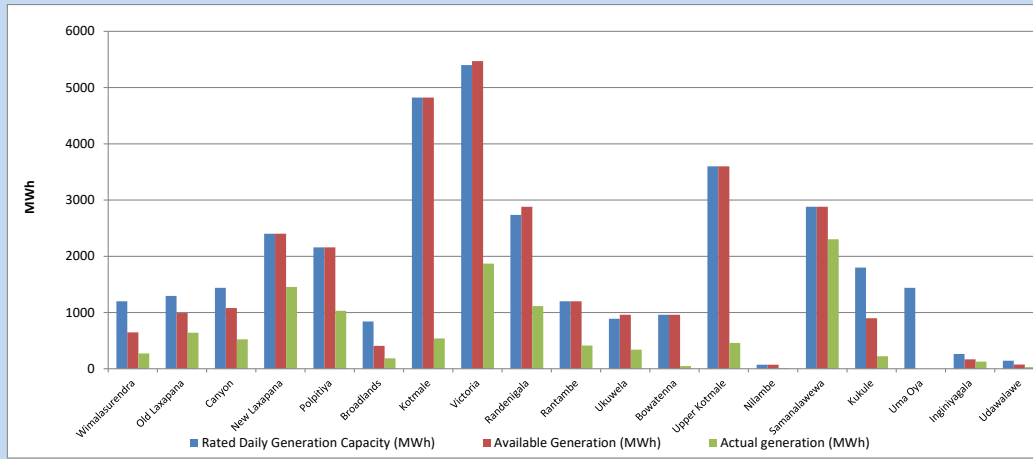


Plant availability is recorded at 6.00 am on

March 7, 2024

7. Major Hydro Plant Dispatch

March 6, 2024

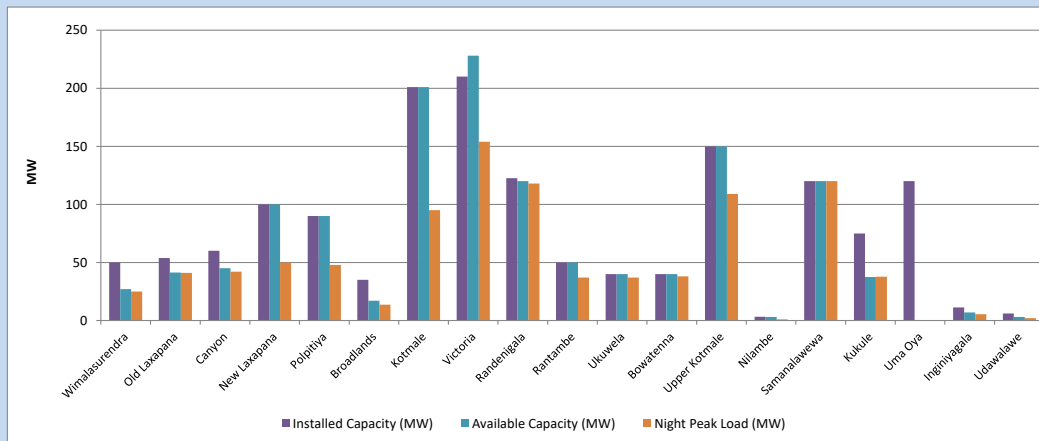


Available Generation is estimated based on plant availability at 6.00am on
Broadlands power plant is operating in the Commissioning Stage

March 7, 2024

8. Major Hydro Plant Loading at Night Peak

March 6, 2024



Plant availability is recorded at 6.00 am on
Broadlands power plant is operating in the Commissioning Stage

March 7, 2024

9. Summary of Major Plant performance

Table 05

Plant	Maximum Available Total Capacity	Plant Availability	Night peak Load	Plant Dispatch
	(MW)	(MW)	(MW)	(MWh)
Wimalasurendra	50	27	25	272
Old Laxapana	54	41	41	641
Canyon	60	45	42	525
New Laxapana	100	100	50	1,456
Polpitiya	90	90	48	1,030
Broadlands	35	17	14	186
Kotmale	201	201	95	540
Victoria	210	228	154	1,869
Randenigala	123	120	118	1,114
Rantambe	50	50	37	414
Ukuwela	40	40	37	340
Bowatenna	40	40	38	47
Upper Kotmale	150	150	109	459
Nilambe	3	3	1	11
Samanalawewa	120	120	120	2,304
Kukule	75	38	38	223
Uma Oya (Testing)	120	0	0	0
Inginiyagala	11	7	5	127
Udawalawe	6	3	2	29
Puttalam Coal I	270	270	269	6,441
Puttalam Coal II	270	270	270	6,492
Puttalam Coal III	270	270	271	6,510
KPS Small GTs	54	16	0	0
KPS GT 7	115	115	0	0
KCCP	165	150	148	3,612
Sapugaskanda A	70	64	64	1,254
Sapugaskanda B	72	54	54	1,120
Uthura Janani	22	24	23	513
Barge CEB	62	60	59	1,210
CEB-Hambantota	30	19	0	0
CEB-Mathugama	20	13	0	0
ACE Matara	24	0	0	0
Asia Power	50	0	0	0
KCCPS -2	163	155	0	0
West Coast	270	270	282	5,682
Nothern Power	36	0	0	0
ACE Embilipitiya	93	0	0	0
Total	3,594	3,069	2,488	46,550

Note-

Plant availability is the availability recorded at 6 am on

March 7, 2024

Installed Capacity is sourced from CEB Annual Report- 2022

10. Contribution to the Night Peak in MW

March 6, 2024

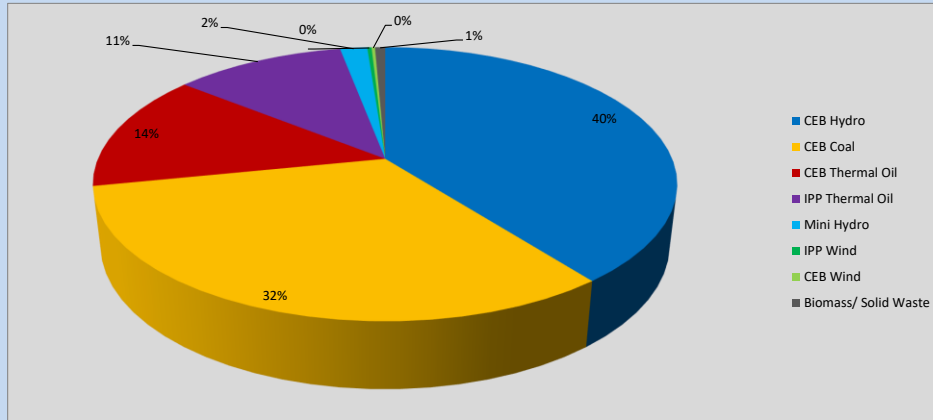


Table 06

CEB Hydro	987	MW
CEB Coal	810	MW
CEB Thermal Oil	348	MW
IPP Thermal Oil	282	MW
Mini Hydro (Telemetered)	45	MW
IPP Wind	7.2	MW
CEB Wind	5.6	MW
Biomass/ Solid Waste	17	MW

Recorded Peak Demand Data

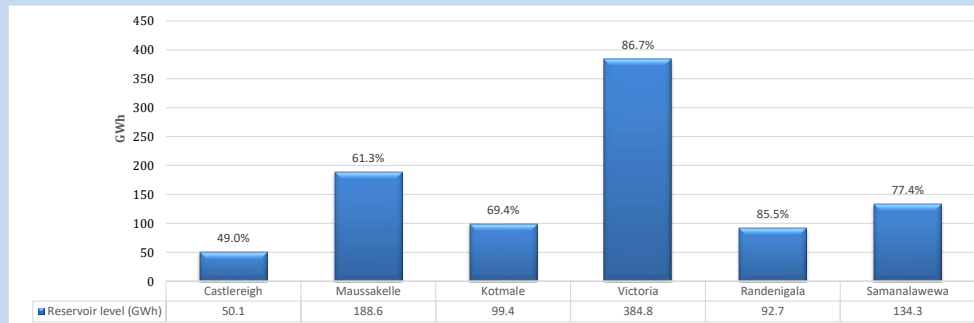
Table 07

Night Peak*	2,502	MW
Day Peak Maximum Demand	2,281	MW
Day Peak Minimum Demand	1,782	MW
Off Peak Minimum Demand	1,486	MW

Above figures are excluding contribution from roof top solar, non telemetered solar and mini hydro plants

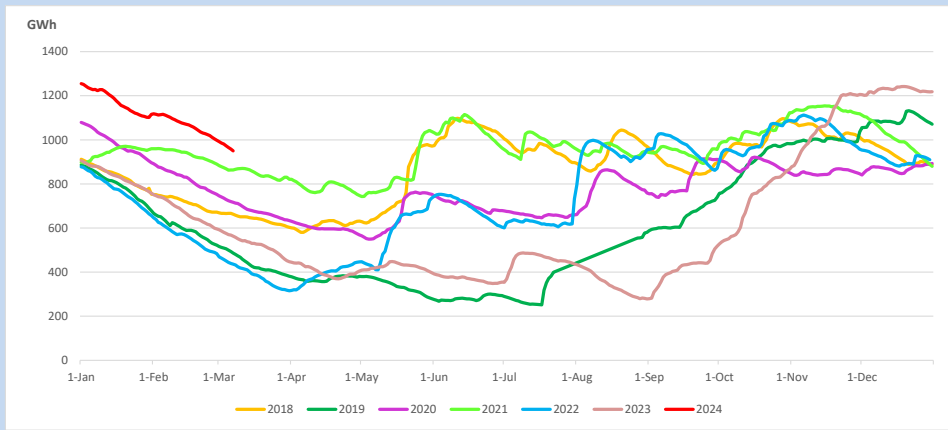
Reservoir Levels -

as at 06.00 Hr on March 7, 2024

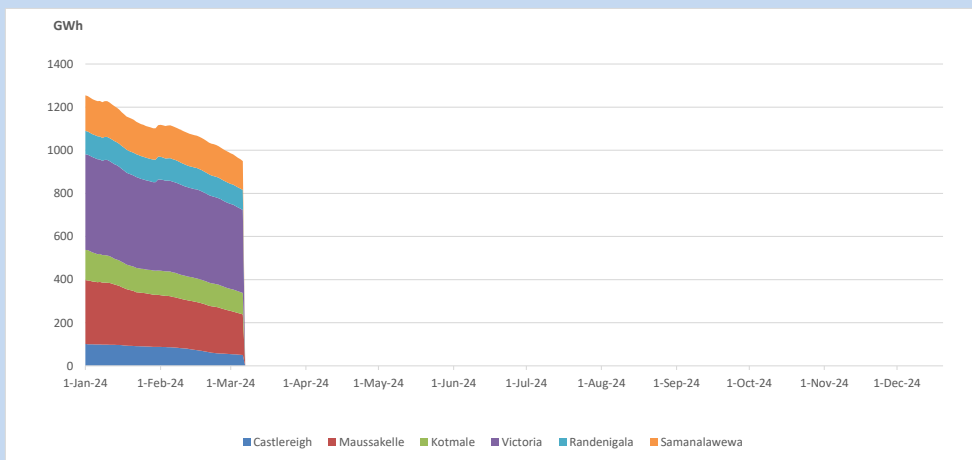


Total Reservoir Level 949.9 GWh
% of Total capacity 74.3%

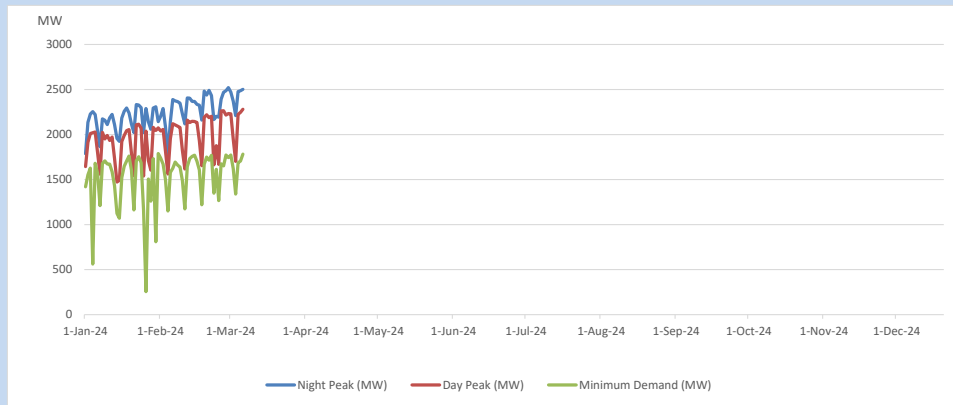
11. Comparison of Total Reservoir Storage Levels with Past Years



12. Variation of Major Hydro Reservoir Levels in the current year (GWh)



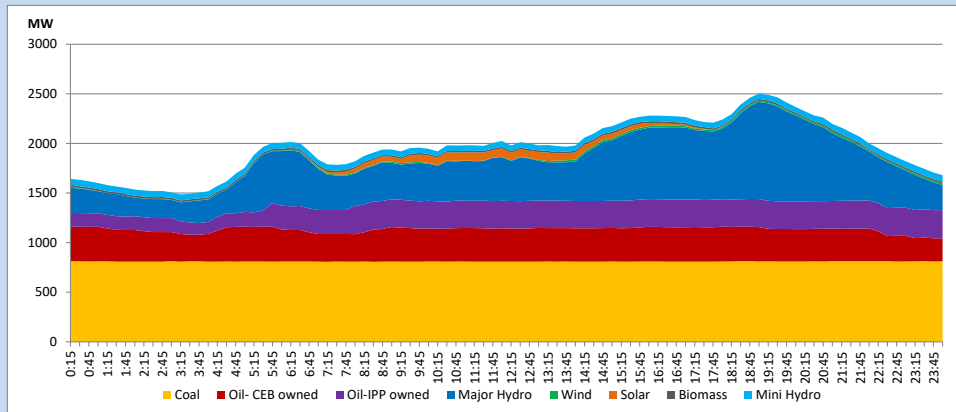
13. Variation of Demand during the current year



The above figures are excluding contribution from roof top solar, non telemetered solar and mini hydro plants

14. Daily Load Curve

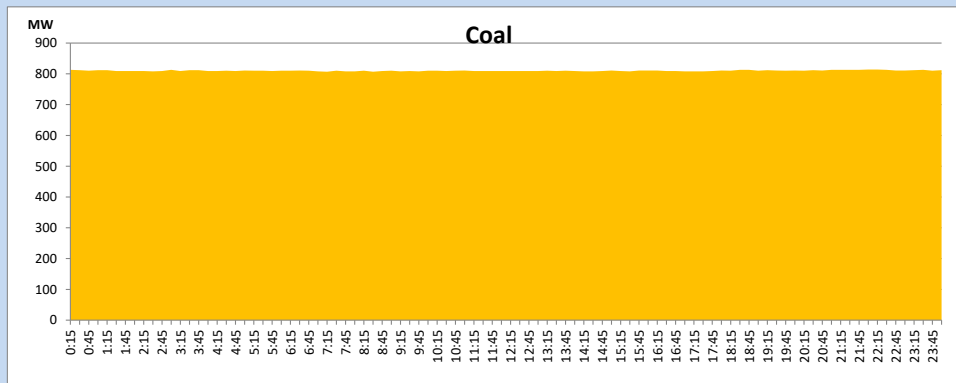
March 6, 2024



Solar and wind data is based on Telemetered Power Stations only

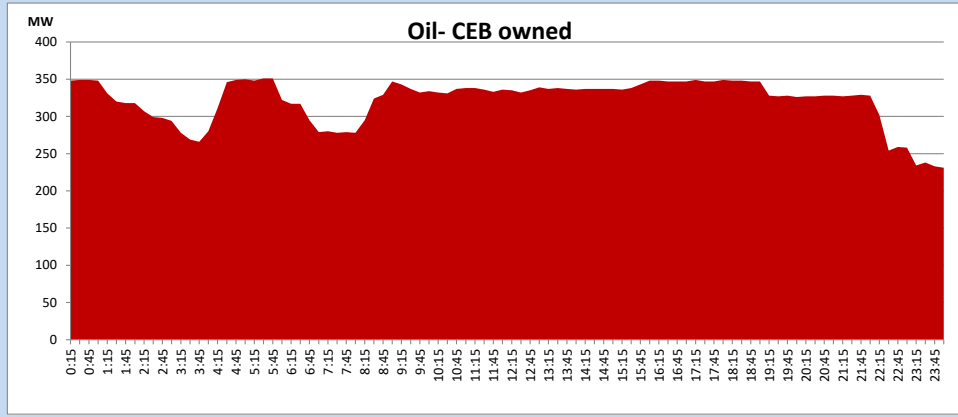
Coal Generation during

March 6, 2024



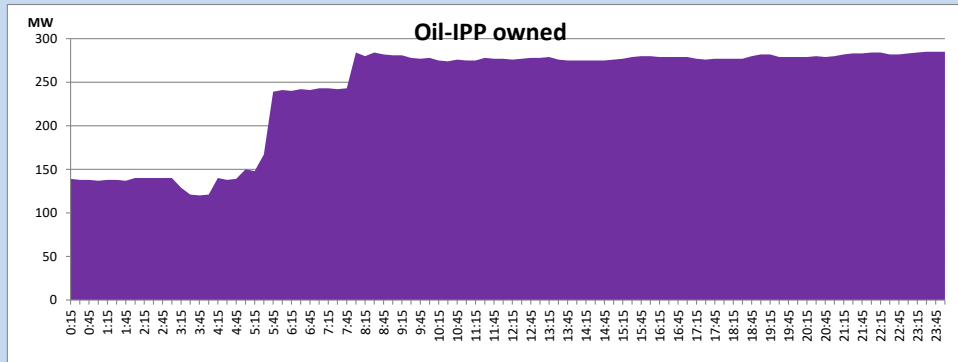
CEB Oil Plant Generation during

March 6, 2024



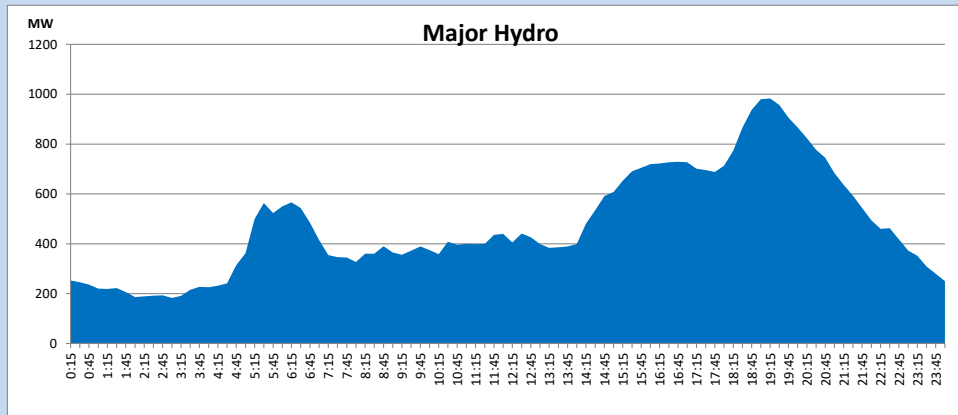
IPP Oil Plant Generation during

March 6, 2024



Major Hydro Generation during

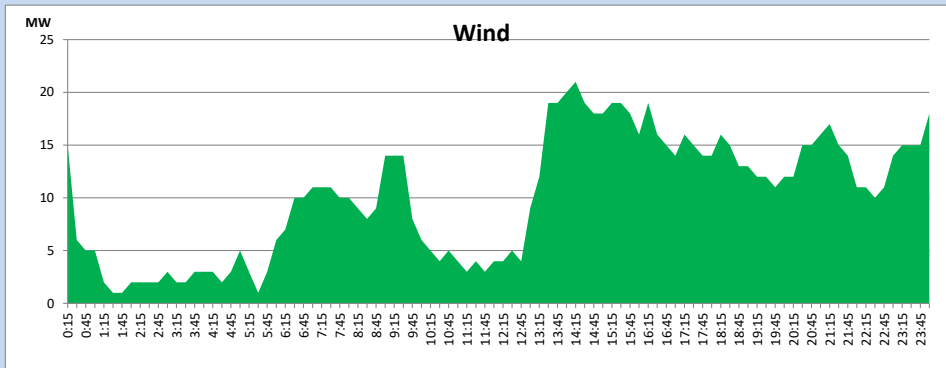
March 6, 2024



Wind Generation during

March 6, 2024

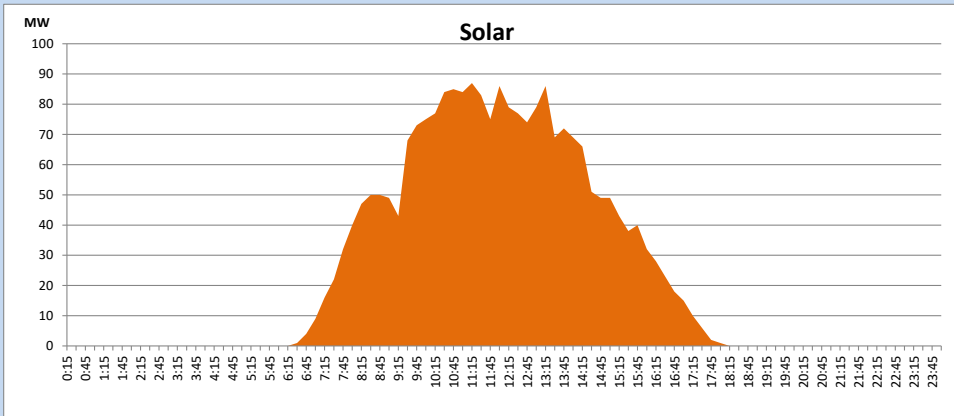
Based on Telemetered Power Stations only



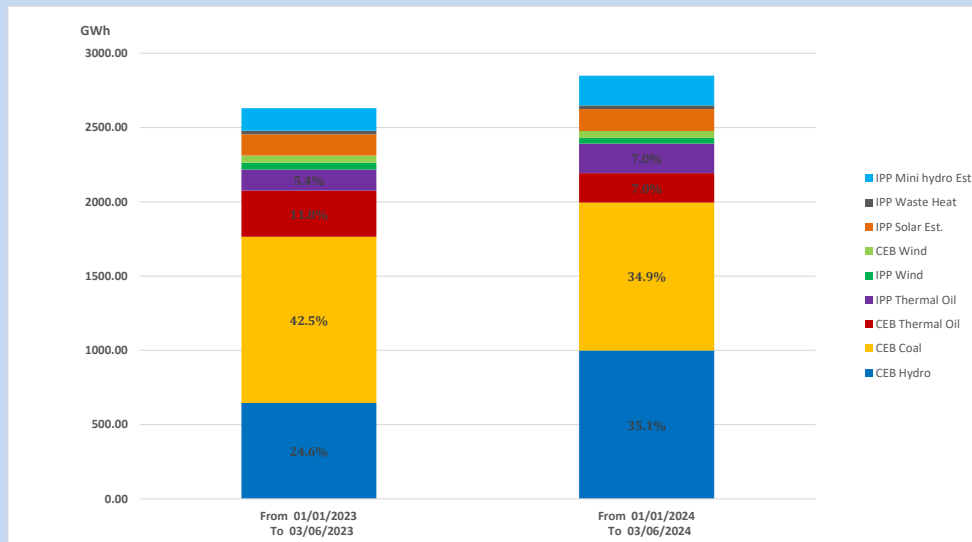
Solar Generation during

March 6, 2024

Based on Telemetered Power Stations only



15. Cumulative Dispatch Comparison with Last Year



Cumulative dispatch
 From 01/01/2023 To 03/06/2023
 From 01/01/2024 To 03/06/2024

2630 GWh
 2848 GWh

The above figures are including contribution from roof top solar, non telemetered solar and mini hydro plants)
 Unserviced energy due to power cuts has been excluded in 2023

Thermal Plant Fuel types

Table 08

Power Station	Primary Fuel
CEB Thermal	
Sapugaskanda 1	Heavy Fuel
Sapugaskanda 2	Heavy Fuel
Kelanitissa Small Gas Turbines	Auto Diesel
GT 7 - Kelanitissa	Auto Diesel
Kelanitissa CCY	Naphtha or Diesel
Lakvijaya 1	Coal
Lakvijaya 2	Coal
Lakvijaya 3	Coal
Uthuru Janani	Heavy Fuel
Barge CEB	Heavy Fuel
KCCPS -2	Auto Diesel

Power Station	Primary Fuel
Private Thermal	
West Coast	Auto Diesel / Heavy Fuel
ACE Embilipitiya	Heavy Fuel

Major Incidents reported during the day

March 6, 2024

- 1) N'Laxapana unit 01 made a forced shutdown due to bypass valve malfunction at 8:02hrs and unit 01 resumed generation at 22:25hrs.
- 2) Vauniya 132/33kV T/F 02 manually switched off at 8:18hrs due to CT oil leak. The T/F is yet to be normalized.