

Generation and Reservoirs Statistics

March 5, 2024



PUBLIC UTILITIES COMMISSION OF SRI LANKA

1. Daily Generation Mix in MWh

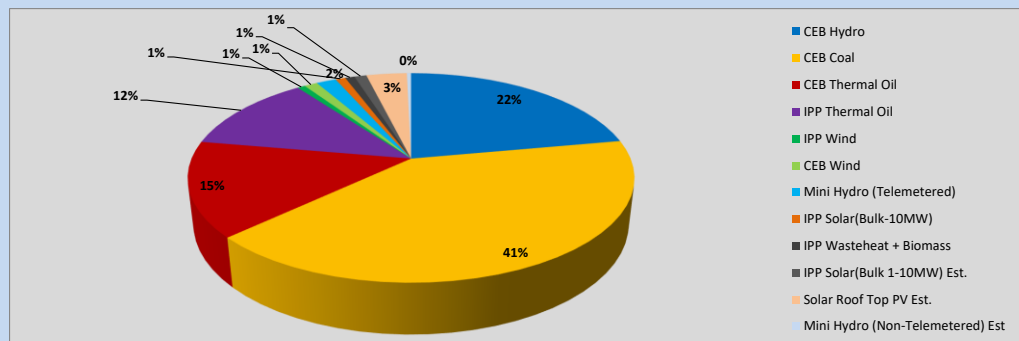


Table 01

	Generation (MWh)
CEB Hydro	10,542
CEB Coal	19,483
CEB Thermal Oil	6,992
IPP Thermal Oil	5,789
IPP Wind	320
CEB Wind	544
Mini Hydro (Telemetered)	816
IPP Solar (Bulk)	412
IPP Waste heat + Biomass	388
Total Generation (Excluding estimated figures)	45,286
* Estimated unserved energy	0
* Estimated Mini Hydro (Non telemetered)	174
* Estimated IPP Solar PV (Bulk 1-10MW)	500
* Estimated Solar Roof Top PV	1670
Total Generation (Including estimated figures)	47,630

* Estimated figures of CEB generation report

Table 02

	Installed Capacity (MW)
CEB Hydro	1644
CEB Coal	810
CEB Thermal Oil	773.1
IPP Thermal Oil (West Coast)	270
IPP Wind	163
CEB Wind	100
Mini Hydro	422
IPP Waste heat + Biomass	54
IPP Solar	137
Rooftop Solar (Ordinary)	293
Rooftop Solar (LT Bulk)	272
Rooftop Solar (HT Bulk)	74

Data Source - Monthly Review Report [Nov-2023]

2. Cumulative Dispatch

Following data excludes the contribution from roof top solar, non telemetered solar and mini hydro plants

Table 03 - Current Month

Category	Dispatch (GWh)	
CEB Hydro	50	21.84%
CEB Coal	96	41.94%
CEB Thermal Oil	32	13.98%
IPP Thermal	24	10.69%
SPP Wind	2	0.96%
CEB Wind	3	1.14%
Mini Hydro *	7	3.17%
IPP Solar *	12	5.46%
IPP Waste heat + BMP	2	0.82%
Total	228	

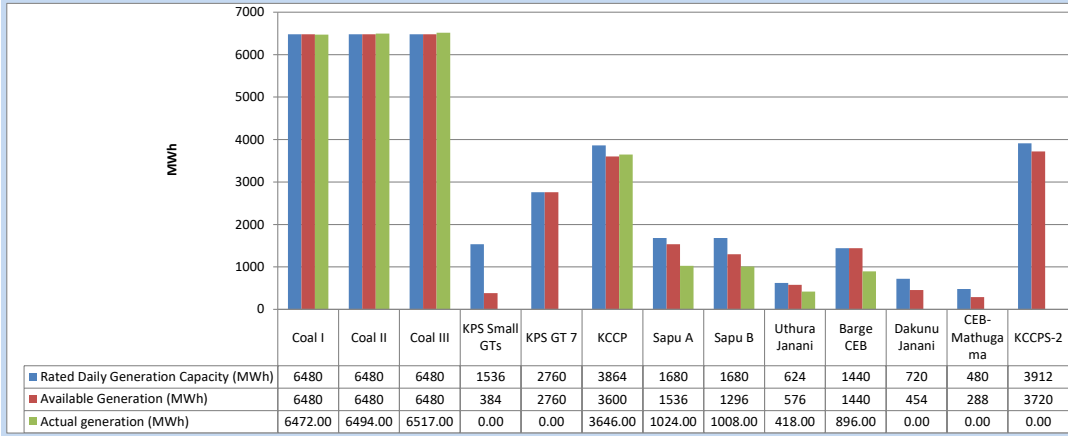
Table 04 - Current Year

Category	Dispatch (GWh)	
CEB Hydro	988	35.30%
CEB Coal	976	34.85%
CEB Thermal Oil	190	6.80%
IPP Thermal	193	6.90%
SPP Wind	38	1.36%
CEB Wind	47	1.67%
Mini Hydro *	198	7.07%
IPP Solar *	145	5.18%
IPP Waste heat	24	0.87%
Total	2,800	

*Including estimated contribution from non telemetered plants

3. CEB owned Thermal Plant Dispatch

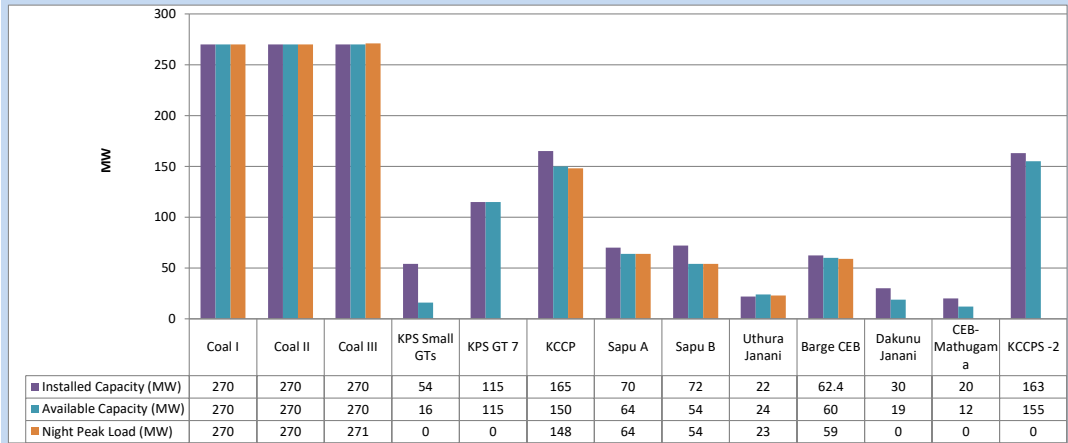
March 5, 2024



Available Generation is estimated based on plant availability at 6.00am on

March 6, 2024

4. CEB owned Thermal Plant Loading at the Night Peak

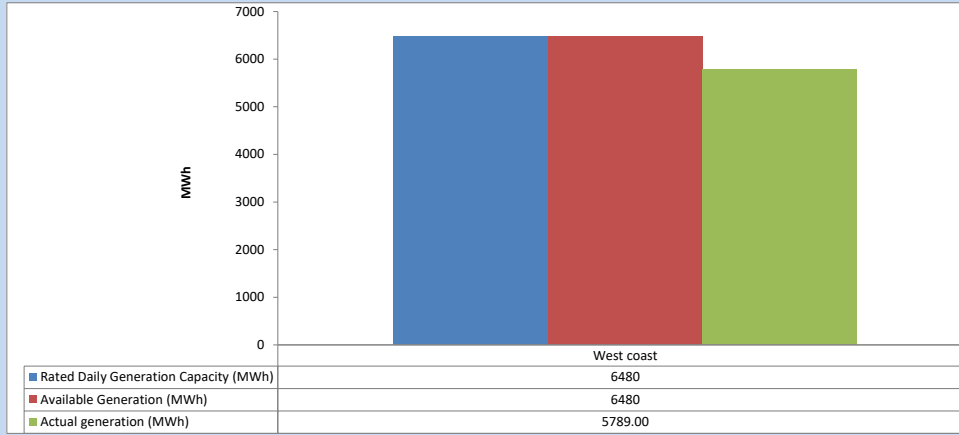


Plant availability is recorded at 6.00 am on

March 6, 2024

5. IPP owned Thermal Plant Dispatch

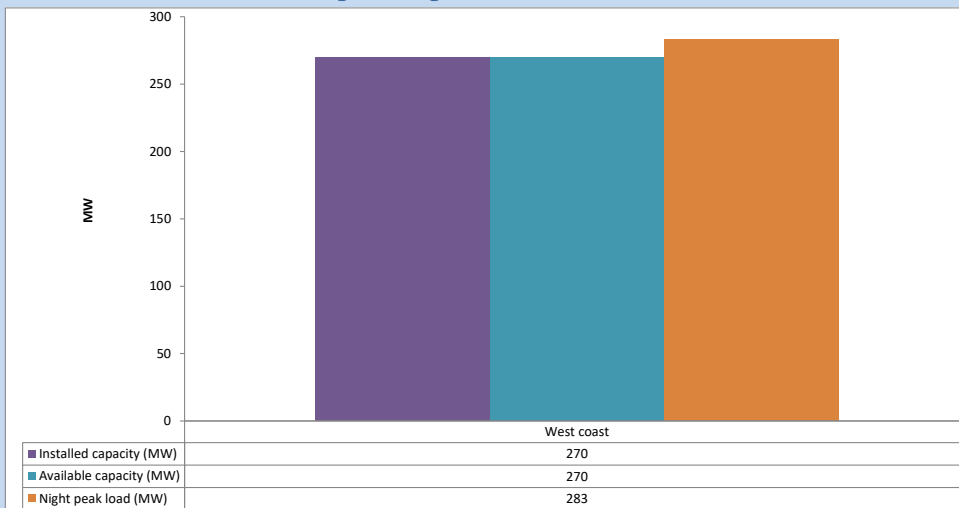
March 5, 2024



Available Generation is estimated based on plant availability at 6.00am on

March 6, 2024

6. IPP owned Thermal Plant Loading at the Night Peak

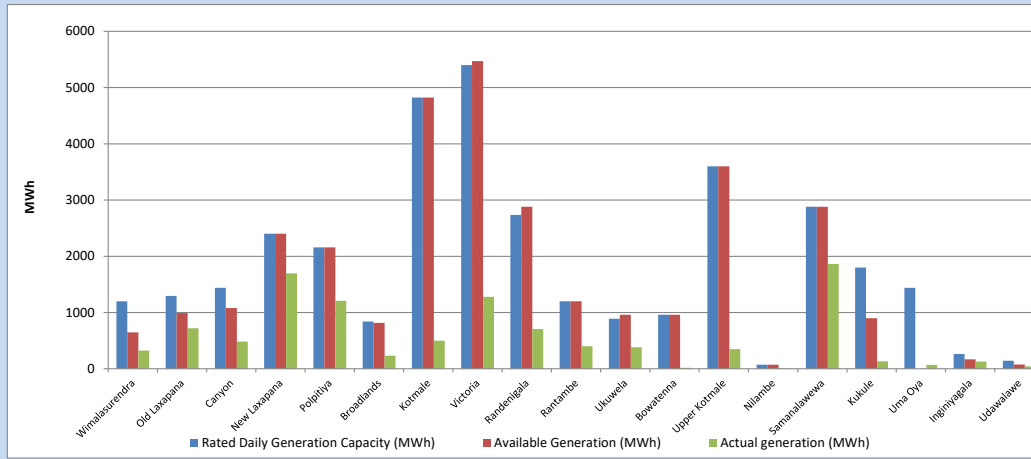


Plant availability is recorded at 6.00 am on

March 6, 2024

7. Major Hydro Plant Dispatch

March 5, 2024

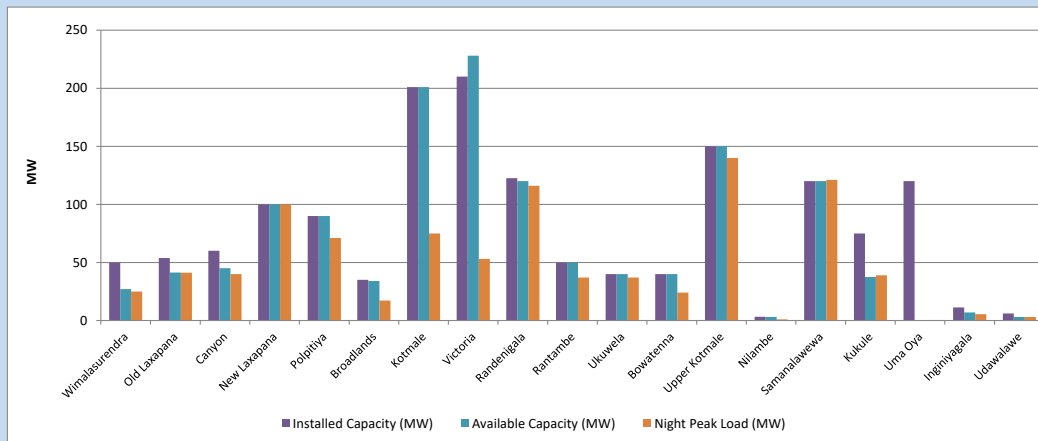


Available Generation is estimated based on plant availability at 6.00am on
Broadlands power plant is operating in the Commissioning Stage

March 6, 2024

8. Major Hydro Plant Loading at Night Peak

March 5, 2024



Plant availability is recorded at 6.00 am on
Broadlands power plant is operating in the Commissioning Stage

March 6, 2024

9. Summary of Major Plant performance

Table 05

Plant	Maximum Available Total Capacity	Plant Availability	Night peak Load	Plant Dispatch
	(MW)	(MW)	(MW)	(MWh)
Wimalasurendra	50	27	25	324
Old Laxapana	54	41	41	721
Canyon	60	45	40	484
New Laxapana	100	100	100	1,699
Polpitiya	90	90	71	1,210
Broadlands	35	34	17	231
Kotmale	201	201	75	500
Victoria	210	228	53	1,281
Randenigala	123	120	116	704
Rantambe	50	50	37	400
Ukuwela	40	40	37	381
Bowatenna	40	40	24	18
Upper Kotmale	150	150	140	348
Nilambe	3	3	1	8
Samanalawewa	120	120	121	1,863
Kukule	75	38	39	133
Uma Oya (Testing)	120	0	0	69
Inginiyagala	11	7	5	127
Udawalawe	6	3	3	41
Puttalam Coal I	270	270	270	6,472
Puttalam Coal II	270	270	270	6,494
Puttalam Coal III	270	270	271	6,517
KPS Small GTs	54	16	0	0
KPS GT 7	115	115	0	0
KCCP	165	150	148	3,646
Sapugaskanda A	70	64	64	1,024
Sapugaskanda B	72	54	54	1,008
Uthura Janani	22	24	23	418
Barge CEB	62	60	59	896
CEB-Hambantota	30	19	0	0
CEB-Mathugama	20	12	0	0
ACE Matara	24	0	0	0
Asia Power	50	0	0	0
KCCPS -2	163	155	0	0
West Coast	270	270	283	5,789
Nothern Power	36	0	0	0
ACE Embilipitiya	93	0	0	0
Total	3,594	3,086	2,472	45,286

Note-

Plant availability is the availability recorded at 6 am on

March 6, 2024

Installed Capacity is sourced from CEB Annual Report- 2022

10. Contribution to the Night Peak in MW

March 5, 2024

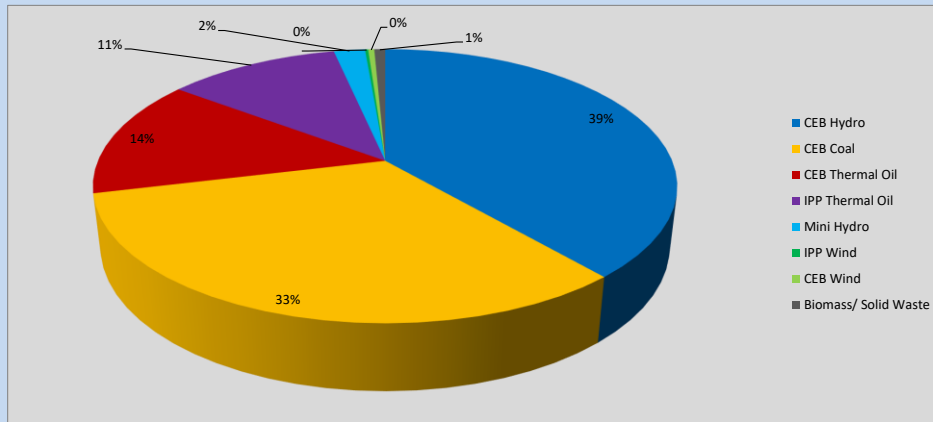


Table 06

CEB Hydro	960	MW
CEB Coal	811	MW
CEB Thermal Oil	348	MW
IPP Thermal Oil	283	MW
Mini Hydro (Telemetered)	51	MW
IPP Wind	5.1	MW
CEB Wind	10.1	MW
Biomass/ Solid Waste	18	MW

Recorded Peak Demand Data

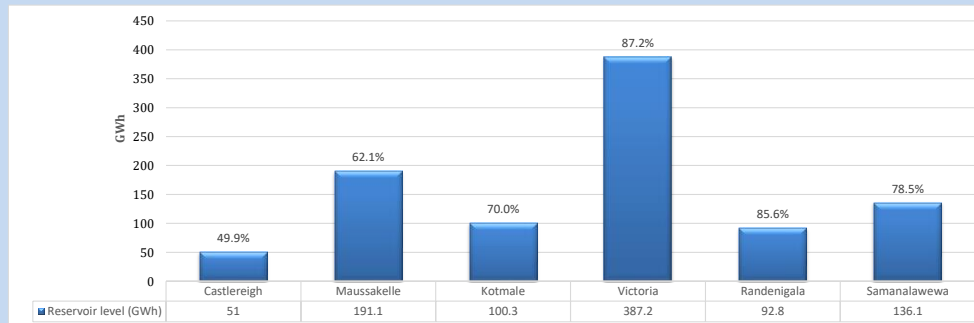
Table 07

Night Peak*	2,487	MW
Day Peak Maximum Demand	2,247	MW
Day Peak Minimum Demand	1,705	MW
Off Peak Minimum Demand	1,425	MW

Above figures are excluding contribution from roof top solar, non telemetered solar and mini hydro plants

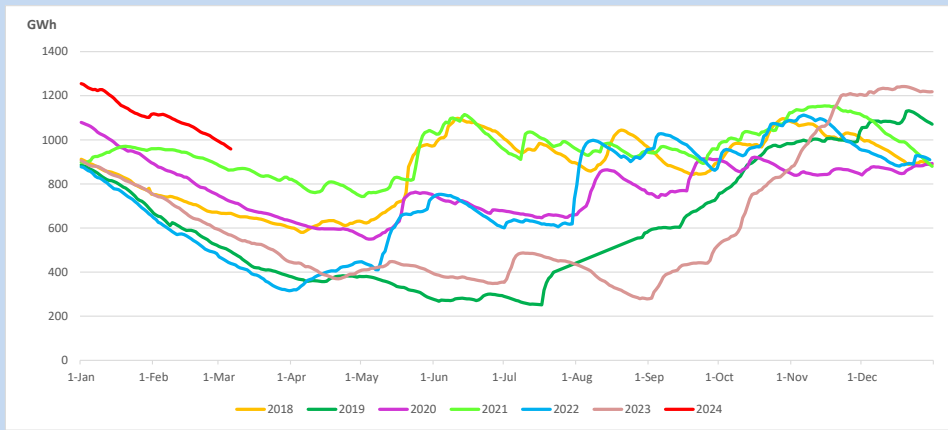
Reservoir Levels -

as at 06.00 Hr on March 6, 2024

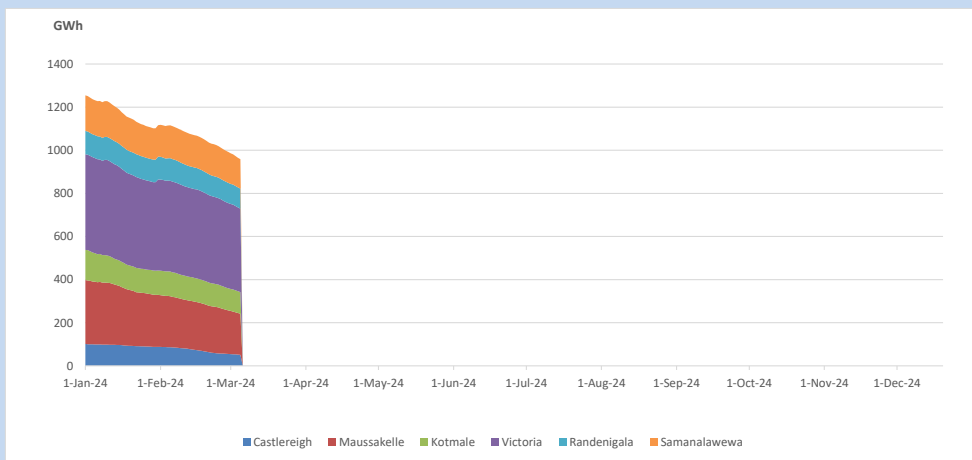


Total Reservoir Level 958.5 GWh
% of Total capacity 74.9%

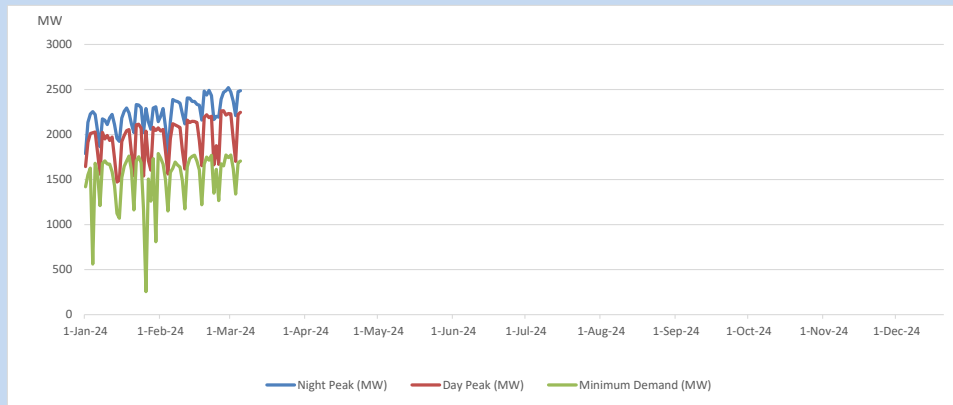
11. Comparison of Total Reservoir Storage Levels with Past Years



12. Variation of Major Hydro Reservoir Levels in the current year (GWh)



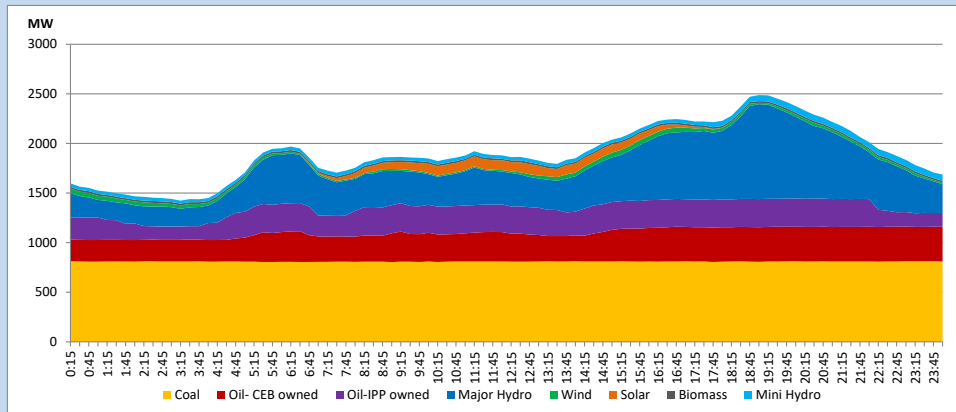
13. Variation of Demand during the current year



The above figures are excluding contribution from roof top solar, non telemetered solar and mini hydro plants

14. Daily Load Curve

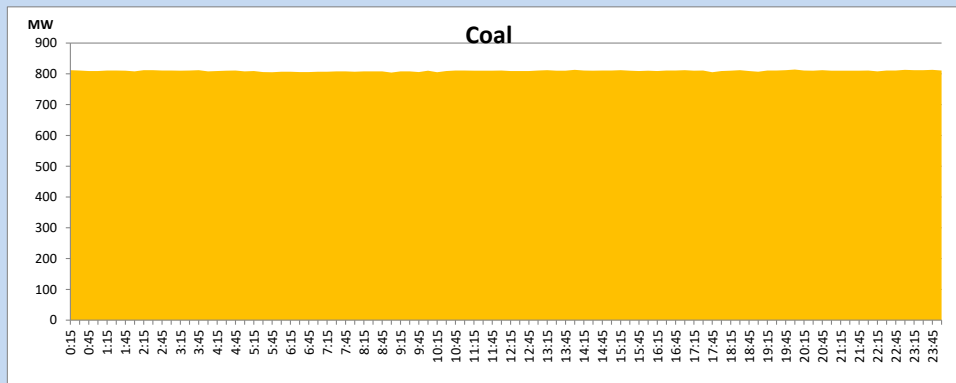
March 5, 2024



Solar and wind data is based on Telemetered Power Stations only

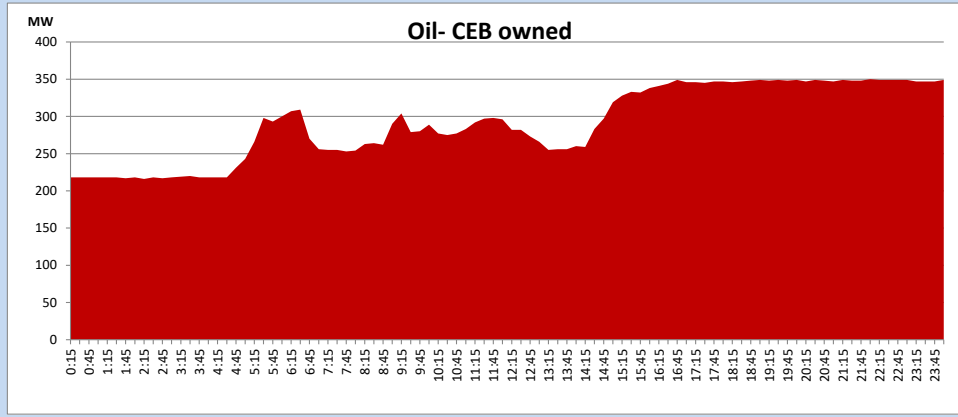
Coal Generation during

March 5, 2024



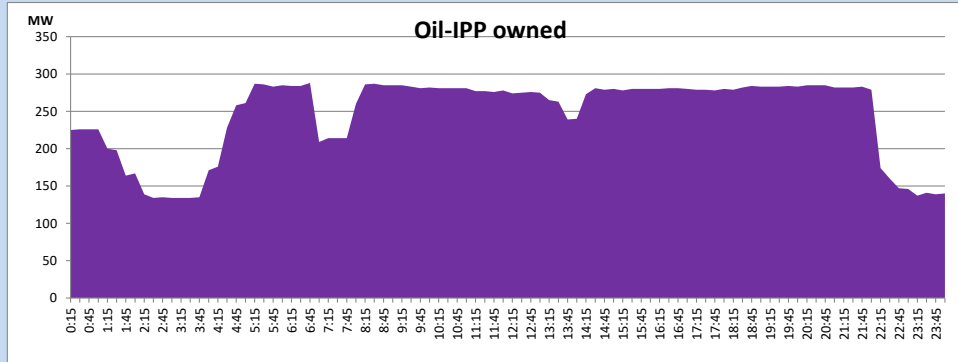
CEB Oil Plant Generation during

March 5, 2024



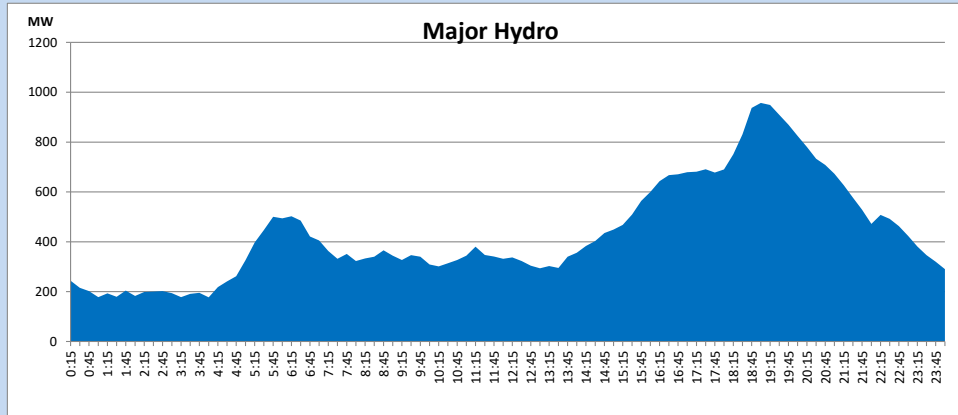
IPP Oil Plant Generation during

March 5, 2024



Major Hydro Generation during

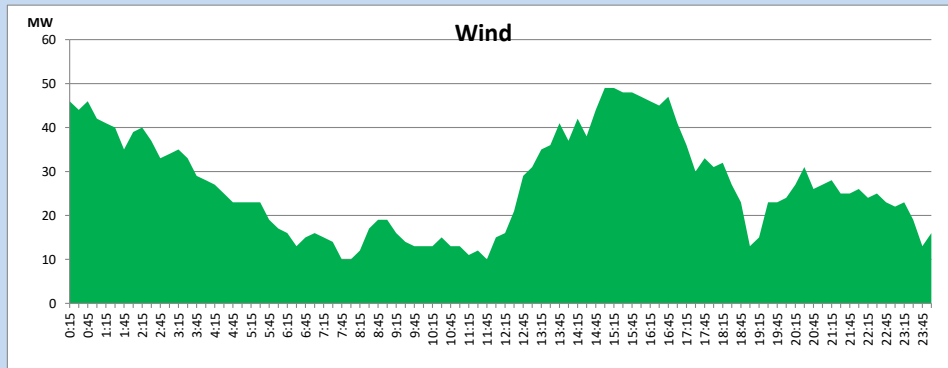
March 5, 2024



Wind Generation during

March 5, 2024

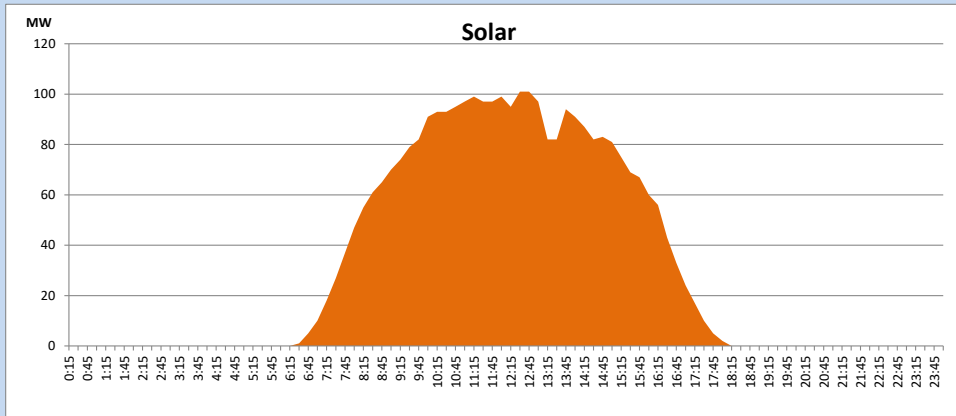
Based on Telemetered Power Stations only



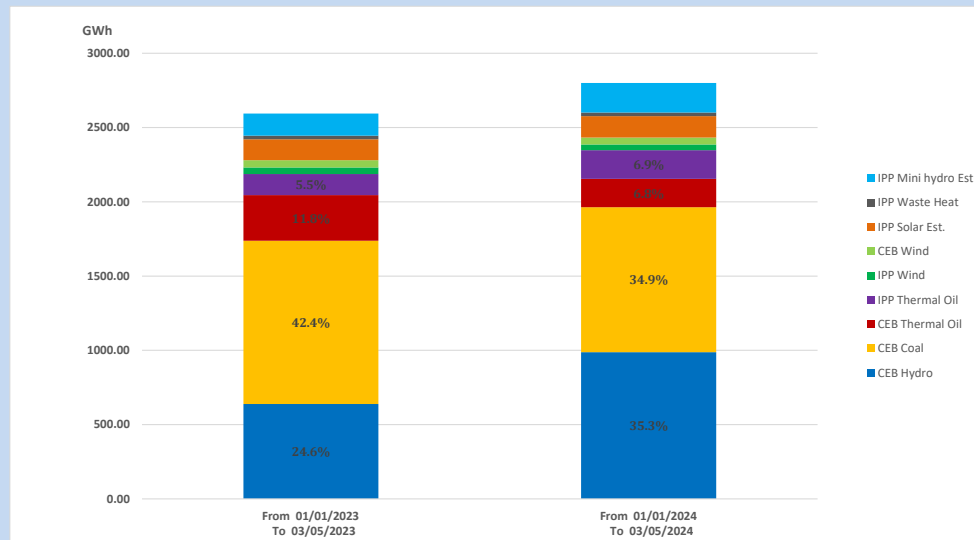
Solar Generation during

March 5, 2024

Based on Telemetered Power Stations only



15. Cumulative Dispatch Comparison with Last Year



Cumulative dispatch
From 01/01/2023 To 03/05/2023
From 01/01/2024 To 03/05/2024

2595 GWh
2800 GWh

The above figures are including contribution from roof top solar, non telemetered solar and mini hydro plants)
Unserviced energy due to power cuts has been excluded in 2023

Thermal Plant Fuel types

Table 08

Power Station	Primary Fuel
CEB Thermal	
Sapugaskanda 1	Heavy Fuel
Sapugaskanda 2	Heavy Fuel
Kelanitissa Small Gas Turbines	Auto Diesel
GT 7 - Kelanitissa	Auto Diesel
Kelanitissa CCY	Naphtha or Diesel
Lakvijaya 1	Coal
Lakvijaya 2	Coal
Lakvijaya 3	Coal
Uthuru Janani	Heavy Fuel
Barge CEB	Heavy Fuel
KCCPS -2	Auto Diesel

Power Station	Primary Fuel
Private Thermal	
West Coast	Auto Diesel / Heavy Fuel
ACE Embilipitiya	Heavy Fuel

Major Incidents reported during the day

March 5, 2024

- 1) New Chilaw - Chilaw 132kV cct 02 tripped from Chilaw end and tripped and A/R from New Chilaw end due to operation of Differential protection.
New Chilaw - Chilaw cct 02 restored at 13:50hrs.