

Generation and Reservoirs Statistics

March 4, 2024



PUBLIC UTILITIES COMMISSION OF SRI LANKA

1. Daily Generation Mix in MWh

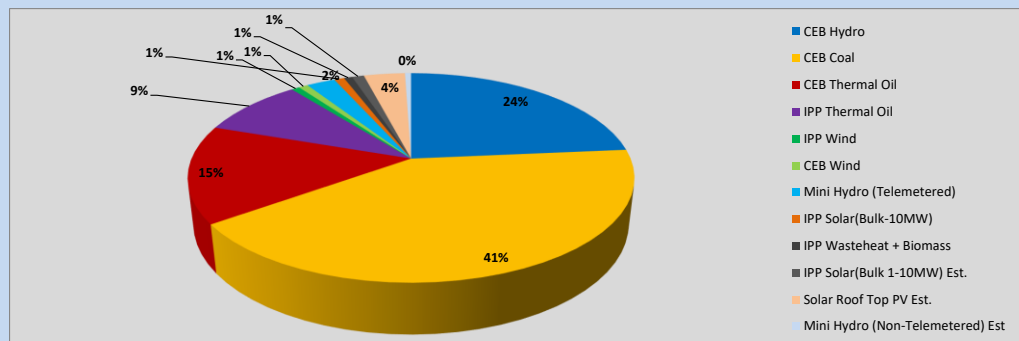


Table 01

	Generation (MWh)
CEB Hydro	11,048
CEB Coal	19,461
CEB Thermal Oil	7,076
IPP Thermal Oil	4,241
IPP Wind	332
CEB Wind	374
Mini Hydro (Telemetered)	1,160
IPP Solar (Bulk)	408
IPP Waste heat + Biomass	338
Total Generation (Excluding estimated figures)	44,438
* Estimated unserved energy	0
* Estimated Mini Hydro (Non telemetered)	247
* Estimated IPP Solar PV (Bulk 1-10MW)	484
* Estimated Solar Roof Top PV	1670
Total Generation (Including estimated figures)	46,839

* Estimated figures of CEB generation report

Table 02

	Installed Capacity (MW)
CEB Hydro	1644
CEB Coal	810
CEB Thermal Oil	773.1
IPP Thermal Oil (West Coast and ACE Embilipitiya)	362.9
IPP Wind	163
CEB Wind	100
Mini Hydro	422
IPP Waste heat + Biomass	54
IPP Solar	137
Rooftop Solar (Ordinary)	293
Rooftop Solar (LT Bulk)	272
Rooftop Solar (HT Bulk)	74

Data Source - Monthly Review Report [Nov-2023]

2. Cumulative Dispatch

Following data excludes the contribution from roof top solar, non telemetered solar and mini hydro plants

Table 03 - Current Month

Category	Dispatch (GWh)	
CEB Hydro	39	21.76%
CEB Coal	76	42.22%
CEB Thermal Oil	25	13.80%
IPP Thermal	19	10.30%
SPP Wind	2	1.03%
CEB Wind	2	1.14%
Mini Hydro *	6	3.46%
IPP Solar *	10	5.47%
IPP Waste heat + BMP	1	0.83%
Total	181	

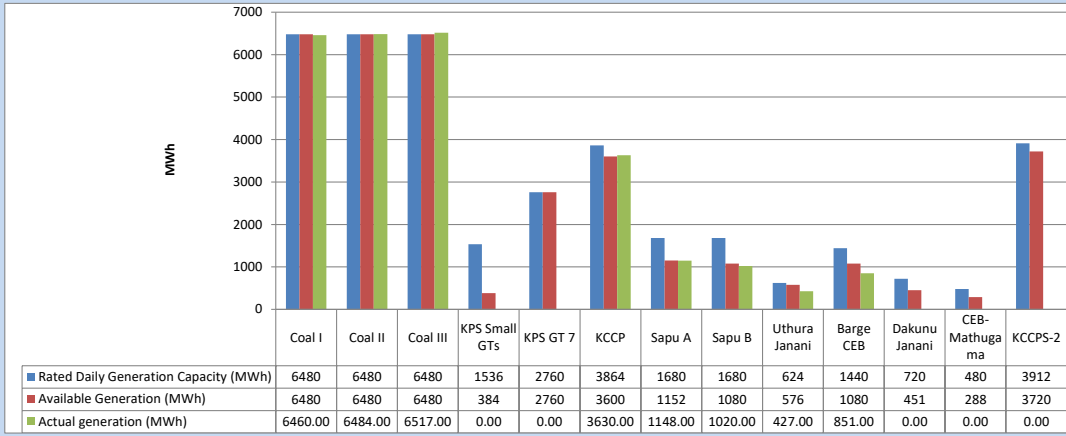
Table 04 - Current Year

Category	Dispatch (GWh)	
CEB Hydro	978	35.52%
CEB Coal	956	34.75%
CEB Thermal Oil	183	6.67%
IPP Thermal	187	6.81%
SPP Wind	38	1.37%
CEB Wind	46	1.68%
Mini Hydro *	197	7.16%
IPP Solar *	142	5.17%
IPP Waste heat	24	0.87%
Total	2,752	

*Including estimated contribution from non telemetered plants

3. CEB owned Thermal Plant Dispatch

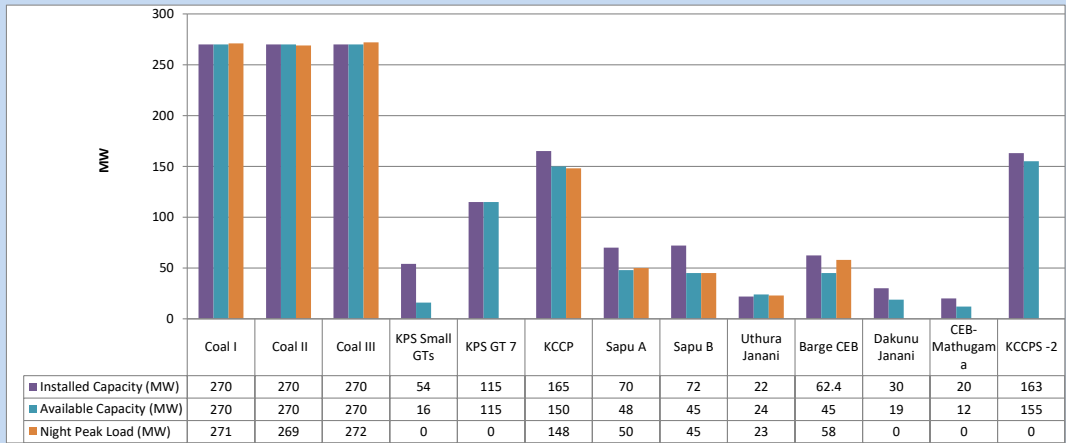
March 4, 2024



Available Generation is estimated based on plant availability at 6.00am on

March 5, 2024

4. CEB owned Thermal Plant Loading at the Night Peak

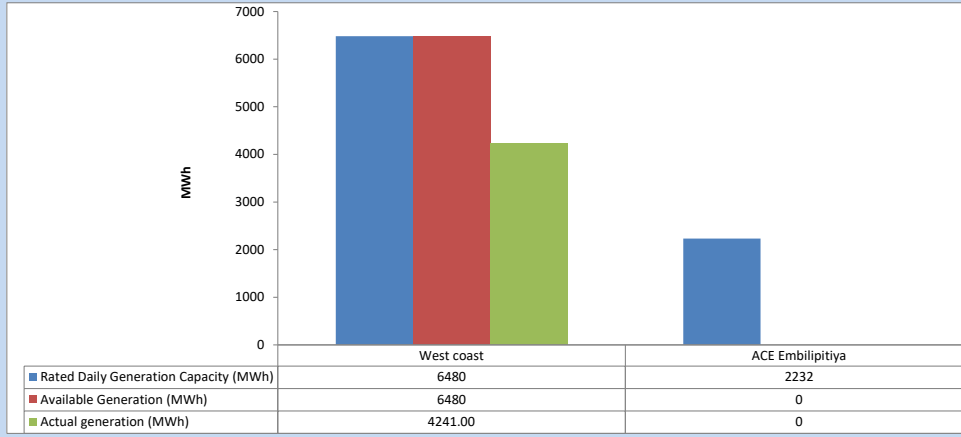


Plant availability is recorded at 6.00 am on

March 5, 2024

5. IPP owned Thermal Plant Dispatch

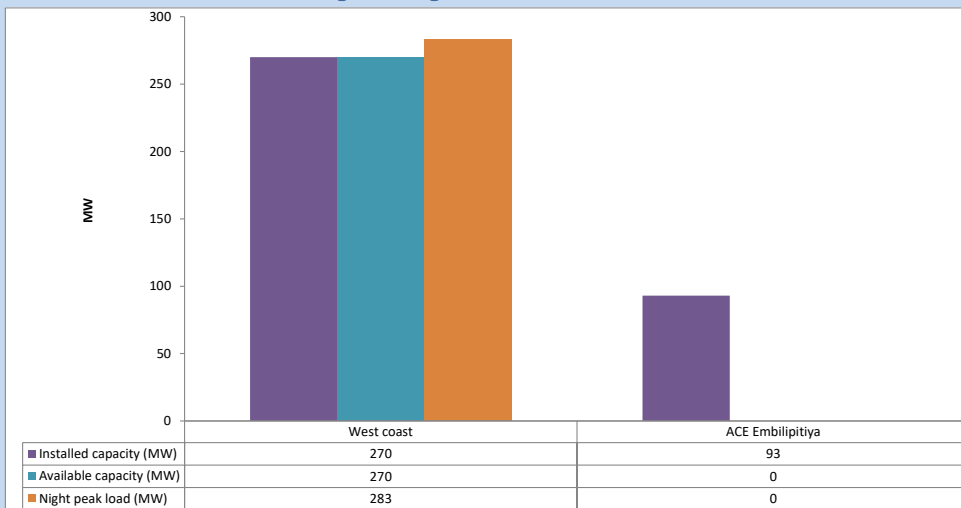
March 4, 2024



Available Generation is estimated based on plant availability at 6.00am on

March 5, 2024

6. IPP owned Thermal Plant Loading at the Night Peak

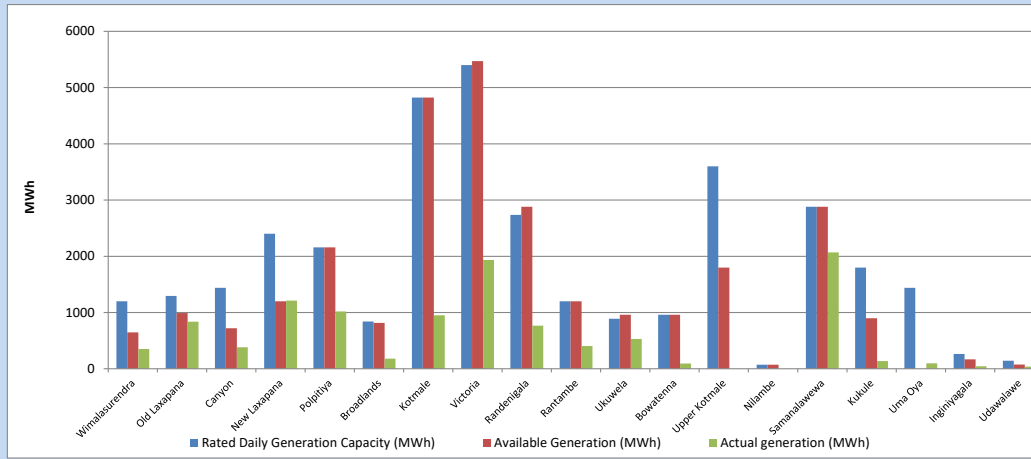


Plant availability is recorded at 6.00 am on

March 5, 2024

7. Major Hydro Plant Dispatch

March 4, 2024

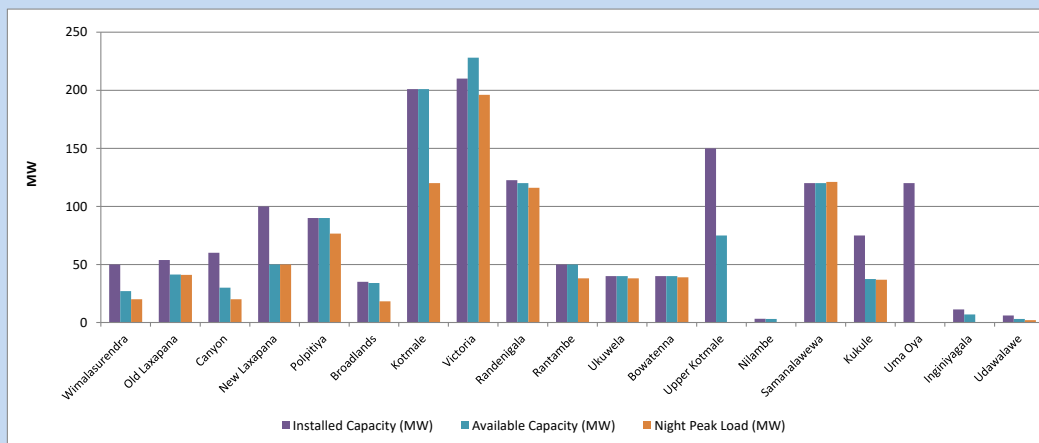


Available Generation is estimated based on plant availability at 6.00am on
Broadlands power plant is operating in the Commissioning Stage

March 5, 2024

8. Major Hydro Plant Loading at Night Peak

March 4, 2024



Plant availability is recorded at 6.00 am on
Broadlands power plant is operating in the Commissioning Stage

March 5, 2024

9. Summary of Major Plant performance

Table 05

Plant	Maximum Available Total Capacity	Plant Availability	Night peak Load	Plant Dispatch
	(MW)	(MW)	(MW)	(MWh)
Wimalasurendra	50	27	20	353
Old Laxapana	54	41	41	836
Canyon	60	30	20	383
New Laxapana	100	50	50	1,213
Polpitiya	90	90	77	1,020
Broadlands	35	34	18	179
Kotmale	201	201	120	950
Victoria	210	228	196	1,934
Randenigala	123	120	116	765
Rantambe	50	50	38	404
Ukuwela	40	40	38	531
Bowatenna	40	40	39	94
Upper Kotmale	150	75	0	0
Nilambe	3	3	0	0
Samanalawewa	120	120	121	2,069
Kukule	75	38	37	138
Uma Oya (Testing)	120	0	0	97
Inginiyagala	11	7	0	45
Udawalawe	6	3	2	37
Puttalam Coal I	270	270	271	6,460
Puttalam Coal II	270	270	269	6,484
Puttalam Coal III	270	270	272	6,517
KPS Small GTs	54	16	0	0
KPS GT 7	115	115	0	0
KCCP	165	150	148	3,630
Sapugaskanda A	70	48	50	1,148
Sapugaskanda B	72	45	45	1,020
Uthura Janani	22	24	23	427
Barge CEB	62	45	58	851
CEB-Hambantota	30	19	0	0
CEB-Mathugama	20	12	0	0
ACE Matara	24	0	0	0
Asia Power	50	0	0	0
KCCPS -2	163	155	0	0
West Coast	270	270	283	4,241
Nothern Power	36	0	0	0
ACE Embilipitiya	93	0	0	0
Total	3,594	2,906	2,465	44,438

Note-

Plant availability is the availability recorded at 6 am on

March 5, 2024

Installed Capacity is sourced from CEB Annual Report- 2022

10. Contribution to the Night Peak in MW

March 4, 2024

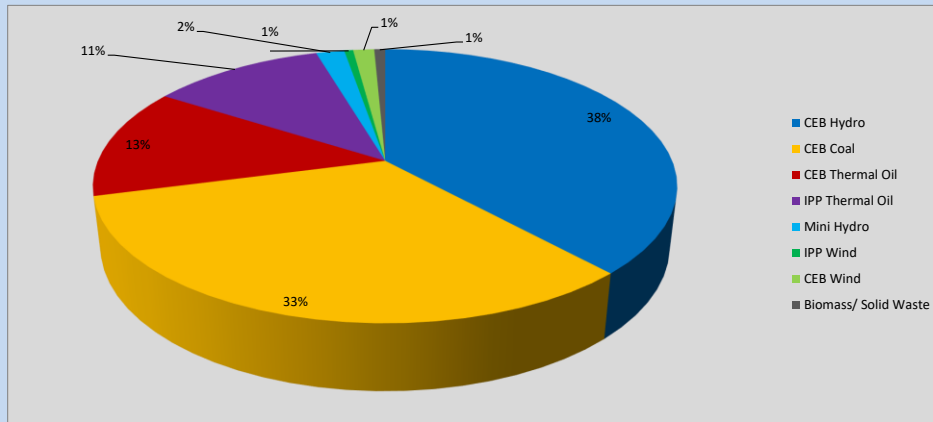


Table 06

CEB Hydro	945	MW
CEB Coal	812	MW
CEB Thermal Oil	324	MW
IPP Thermal Oil	283	MW
Mini Hydro (Telemetered)	46	MW
IPP Wind	14.5	MW
CEB Wind	34.6	MW
Biomass/ Solid Waste	18	MW

Recorded Peak Demand Data

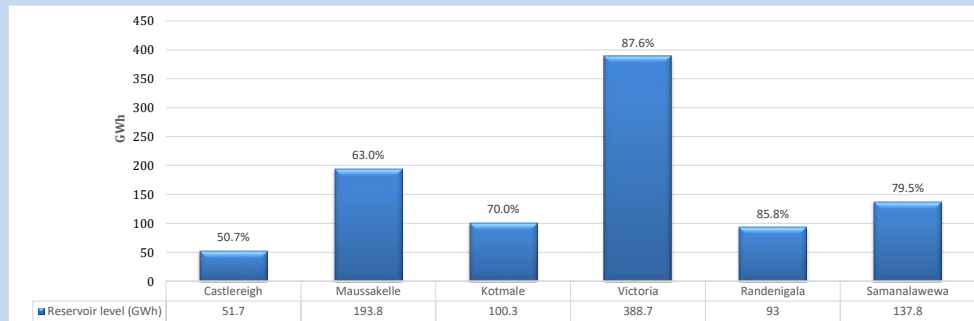
Table 07

Night Peak*	2,477	MW
Day Peak Maximum Demand	2,223	MW
Day Peak Minimum Demand	1,686	MW
Off Peak Minimum Demand	1,361	MW

Above figures are excluding contribution from roof top solar, non telemetered solar and mini hydro plants

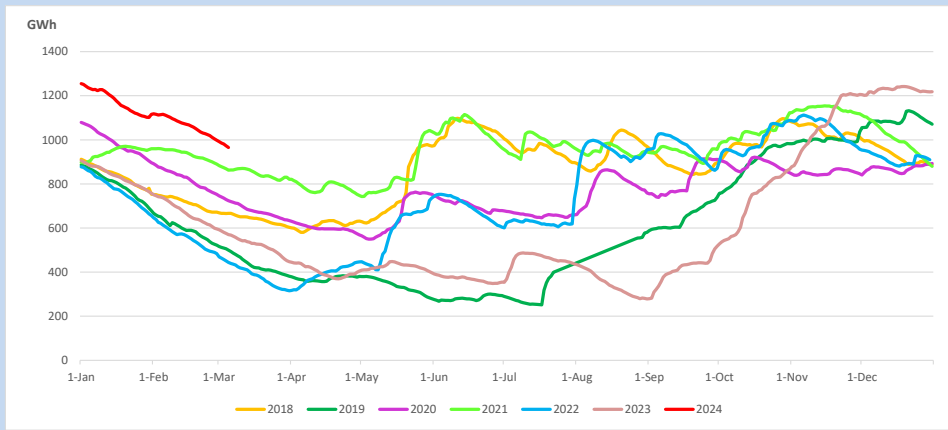
Reservoir Levels -

as at 06.00 Hr on March 5, 2024

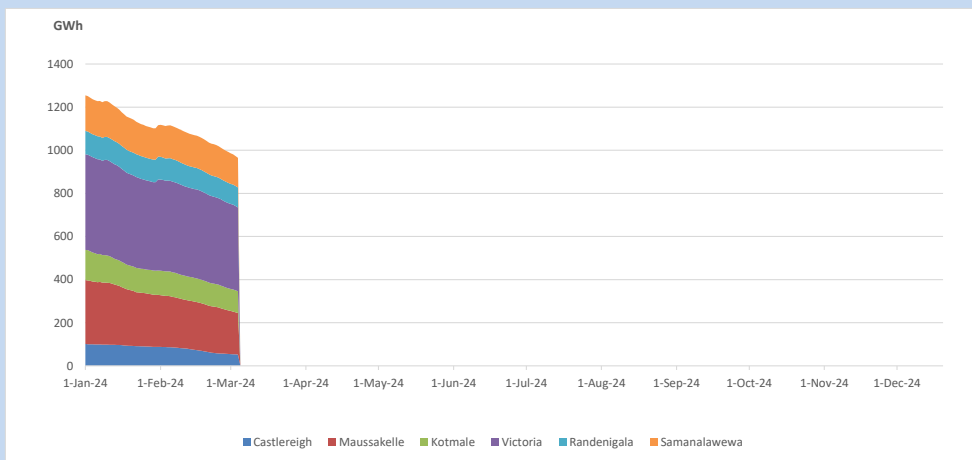


Total Reservoir Level 965.3 GWh
% of Total capacity 75.5%

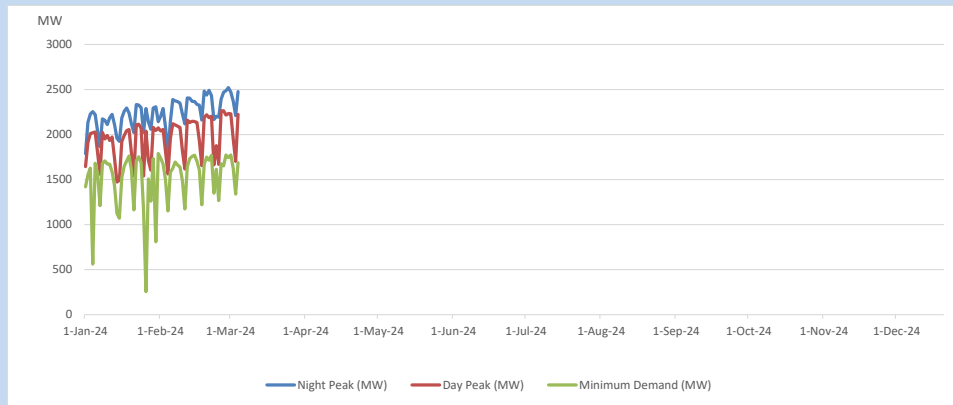
11. Comparison of Total Reservoir Storage Levels with Past Years



12. Variation of Major Hydro Reservoir Levels in the current year (GWh)



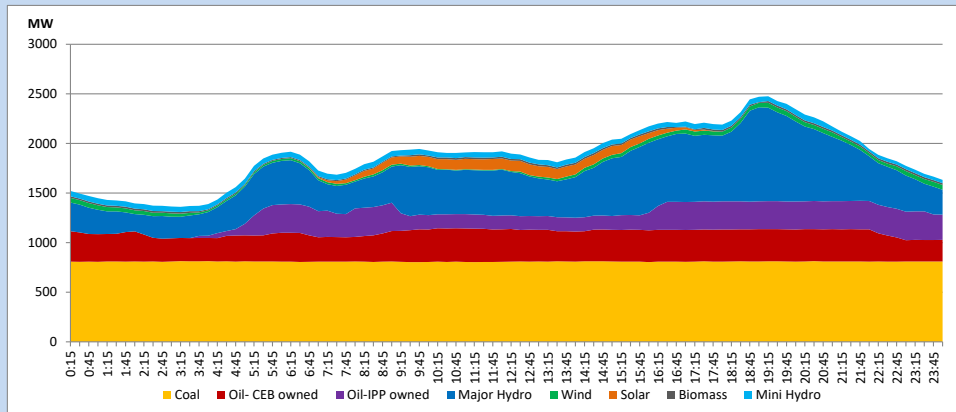
13. Variation of Demand during the current year



The above figures are excluding contribution from roof top solar, non telemetered solar and mini hydro plants

14. Daily Load Curve

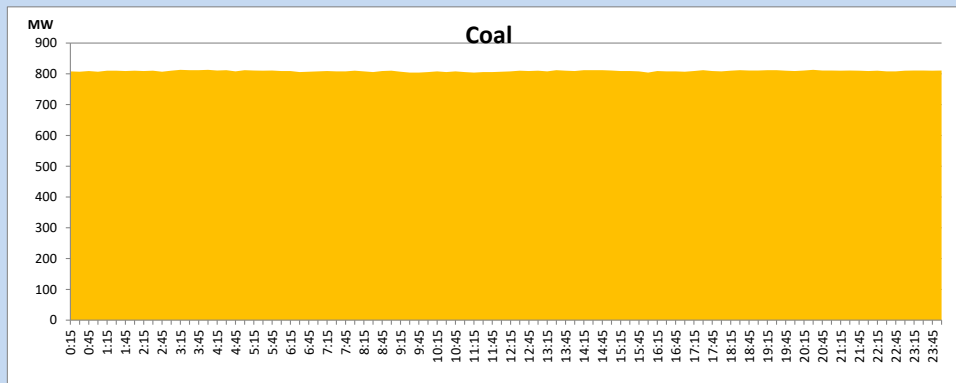
March 4, 2024



Solar and wind data is based on Telemetered Power Stations only

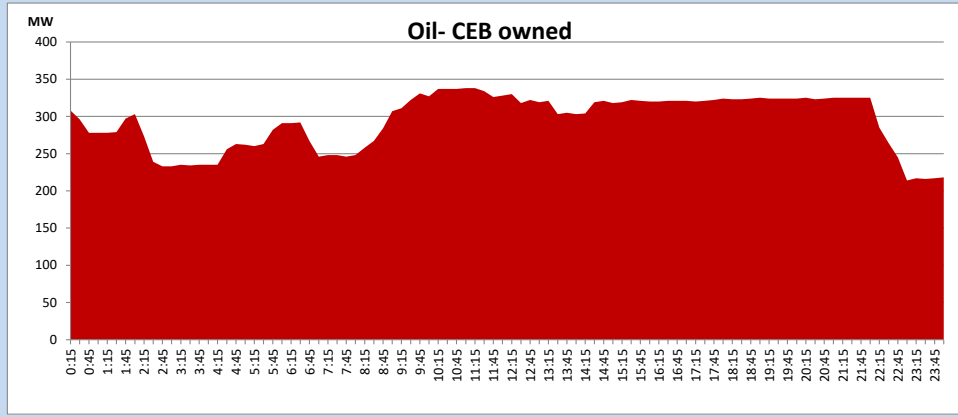
Coal Generation during

March 4, 2024



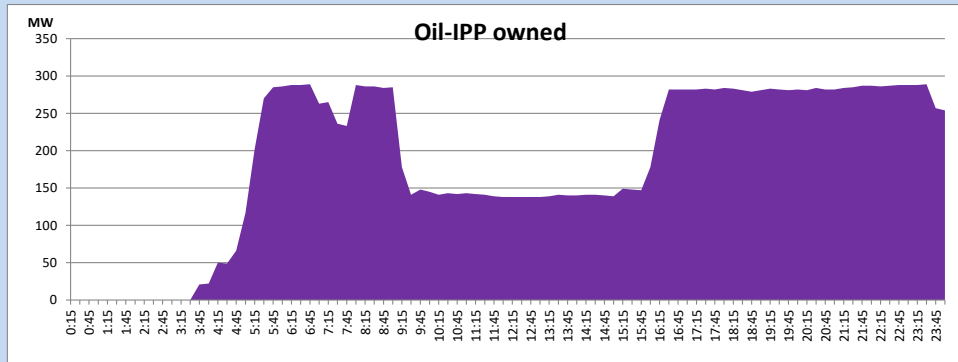
CEB Oil Plant Generation during

March 4, 2024



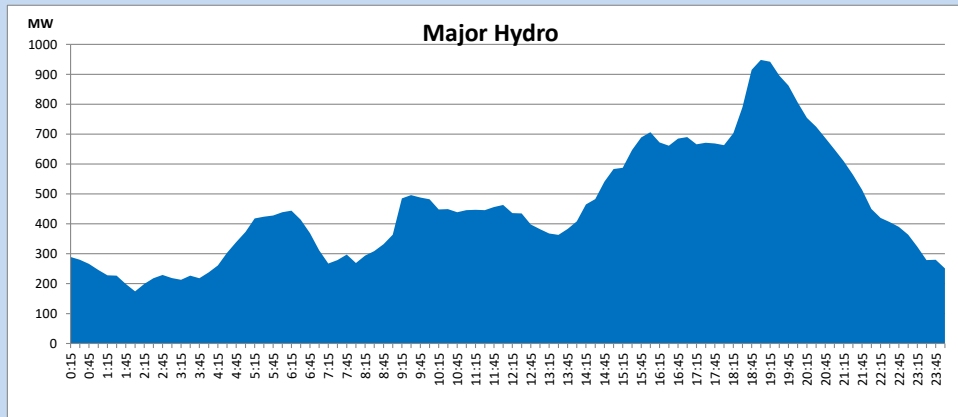
IPP Oil Plant Generation during

March 4, 2024



Major Hydro Generation during

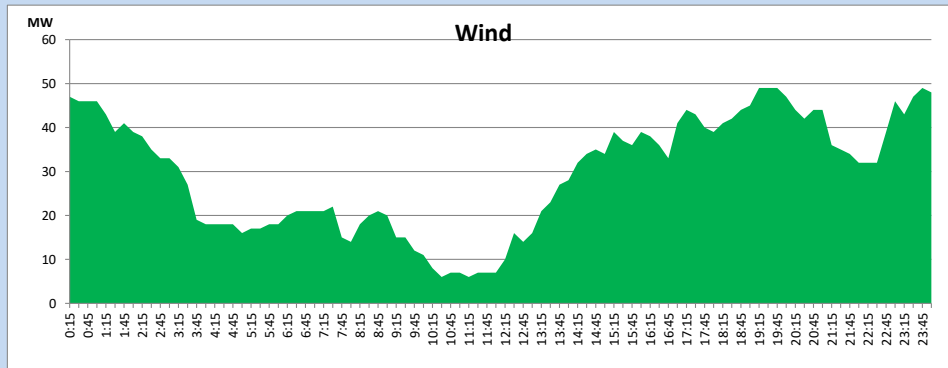
March 4, 2024



Wind Generation during

March 4, 2024

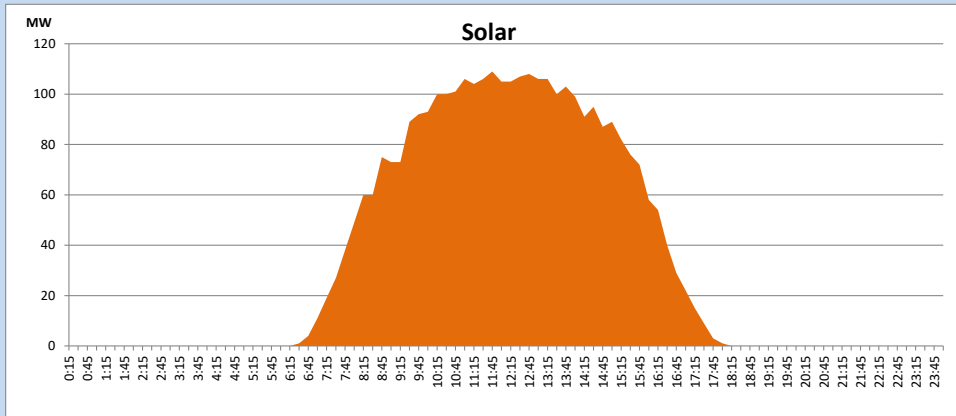
Based on Telemetered Power Stations only



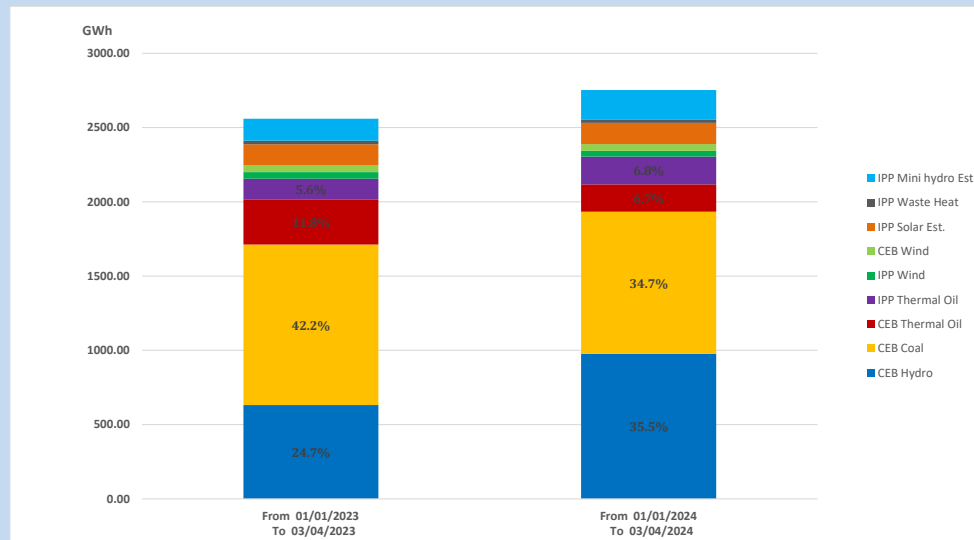
Solar Generation during

March 4, 2024

Based on Telemetered Power Stations only



15. Cumulative Dispatch Comparison with Last Year



Cumulative dispatch
 From 01/01/2023 To 03/04/2023
 From 01/01/2024 To 03/04/2024

2559 GWh
 2752 GWh

The above figures are including contribution from roof top solar, non telemetered solar and mini hydro plants)
 Unserviced energy due to power cuts has been excluded in 2023

Thermal Plant Fuel types

Table 08

Power Station	Primary Fuel
CEB Thermal	
Sapugaskanda 1	Heavy Fuel
Sapugaskanda 2	Heavy Fuel
Kelanitissa Small Gas Turbines	Auto Diesel
GT 7 - Kelanitissa	Auto Diesel
Kelanitissa CCY	Naphtha or Diesel
Lakvijaya 1	Coal
Lakvijaya 2	Coal
Lakvijaya 3	Coal
Uthuru Janani	Heavy Fuel
Barge CEB	Heavy Fuel
KCCPS -2	Auto Diesel

Power Station	Primary Fuel
Private Thermal	
West Coast	Auto Diesel / Heavy Fuel
ACE Embilipitiya	Heavy Fuel

Major Incidents reported during the day

March 4, 2024

- 1) PPA of ACE Embilipitiya power plant expired at 12:00hrs.
- 2) WCP GT 02 made a forced shutdown at 09:00hrs due to an exhaust leak and resumed generation at 15:08hrs.