

Generation and Reservoirs Statistics

March 3, 2024



PUBLIC UTILITIES COMMISSION OF SRI LANKA

1. Daily Generation Mix in MWh

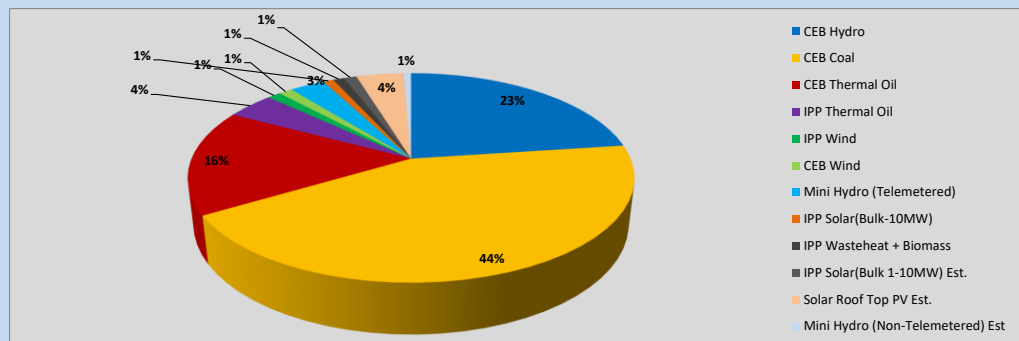


Table 01

	Generation (MWh)
CEB Hydro	9,319
CEB Coal	17,740
CEB Thermal Oil	6,644
IPP Thermal Oil	1,680
IPP Wind	463
CEB Wind	483
Mini Hydro (Telemetered)	1,236
IPP Solar (Bulk)	367
IPP Waste heat + Biomass	384
Total Generation (Excluding estimated figures)	38,316
* Estimated unserved energy	0
* Estimated Mini Hydro (Non telemetered)	263
* Estimated IPP Solar PV (Bulk 1-10MW)	454
* Estimated Solar Roof Top PV	1670
Total Generation (Including estimated figures)	40,703

* Estimated figures of CEB generation report

Table 02

	Installed Capacity (MW)
CEB Hydro	1644
CEB Coal	810
CEB Thermal Oil	773.1
IPP Thermal Oil (West Coast and ACE Embilipitiya)	362.9
IPP Wind	163
CEB Wind	100
Mini Hydro	422
IPP Waste heat + Biomass	54
IPP Solar	137
Rooftop Solar (Ordinary)	293
Rooftop Solar (LT Bulk)	272
Rooftop Solar (HT Bulk)	74

Data Source - Monthly Review Report [Nov-2023]

2. Cumulative Dispatch

Following data excludes the contribution from roof top solar, non telemetered solar and mini hydro plants

Table 03 - Current Month

Category	Dispatch (GWh)	
CEB Hydro	28	21.12%
CEB Coal	57	42.45%
CEB Thermal Oil	18	13.33%
IPP Thermal	14	10.74%
SPP Wind	2	1.14%
CEB Wind	2	1.26%
Mini Hydro *	5	3.61%
IPP Solar *	7	5.47%
IPP Waste heat + BMP	1	0.86%
Total	134	

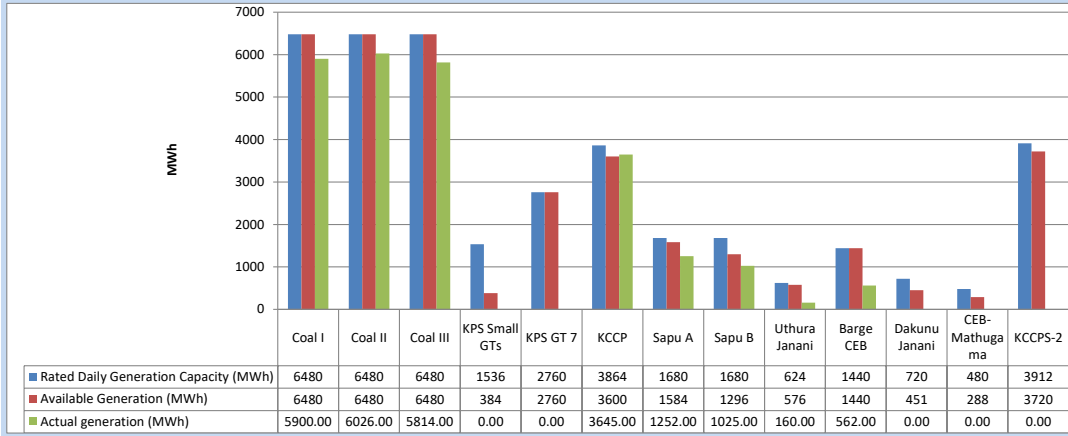
Table 04 - Current Year

Category	Dispatch (GWh)	
CEB Hydro	967	35.73%
CEB Coal	937	34.63%
CEB Thermal Oil	176	6.52%
IPP Thermal	183	6.77%
SPP Wind	37	1.39%
CEB Wind	46	1.69%
Mini Hydro *	196	7.23%
IPP Solar *	140	5.17%
IPP Waste heat	24	0.87%
Total	2,705	

*Including estimated contribution from non telemetered plants

3. CEB owned Thermal Plant Dispatch

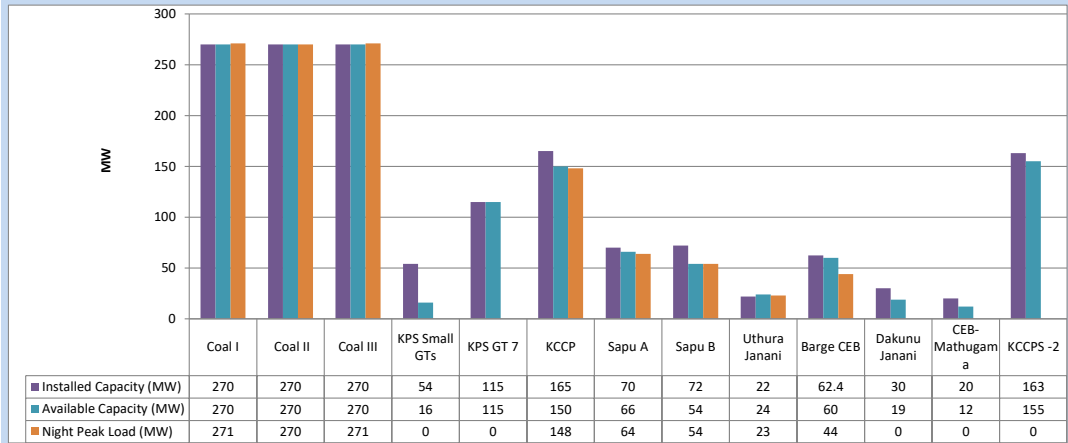
March 3, 2024



Available Generation is estimated based on plant availability at 6.00am on

March 4, 2024

4. CEB owned Thermal Plant Loading at the Night Peak

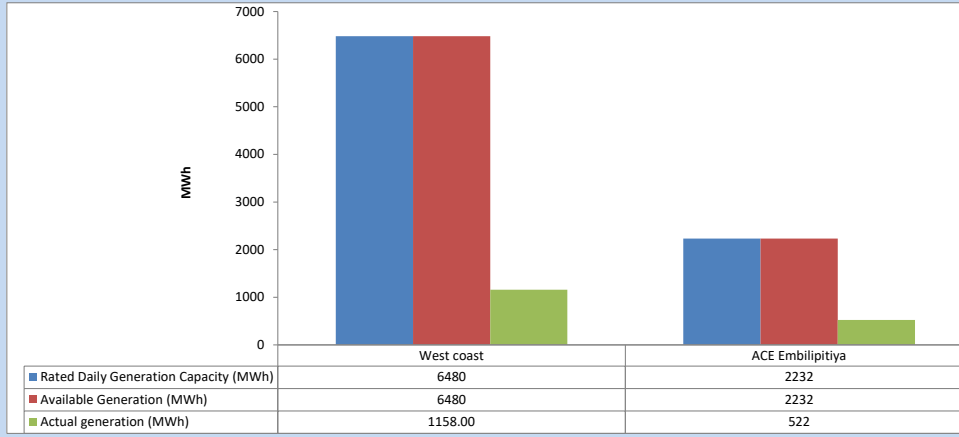


Plant availability is recorded at 6.00 am on

March 4, 2024

5. IPP owned Thermal Plant Dispatch

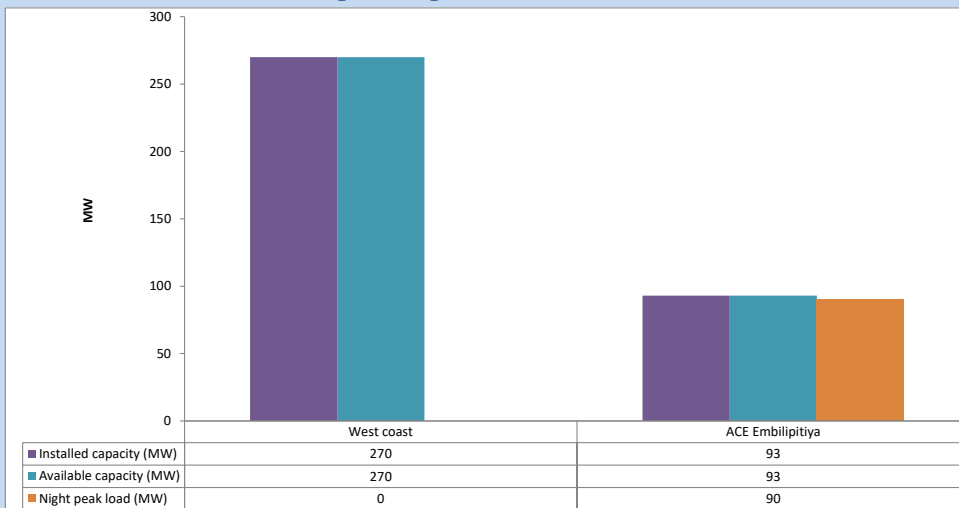
March 3, 2024



Available Generation is estimated based on plant availability at 6.00am on

March 4, 2024

6. IPP owned Thermal Plant Loading at the Night Peak

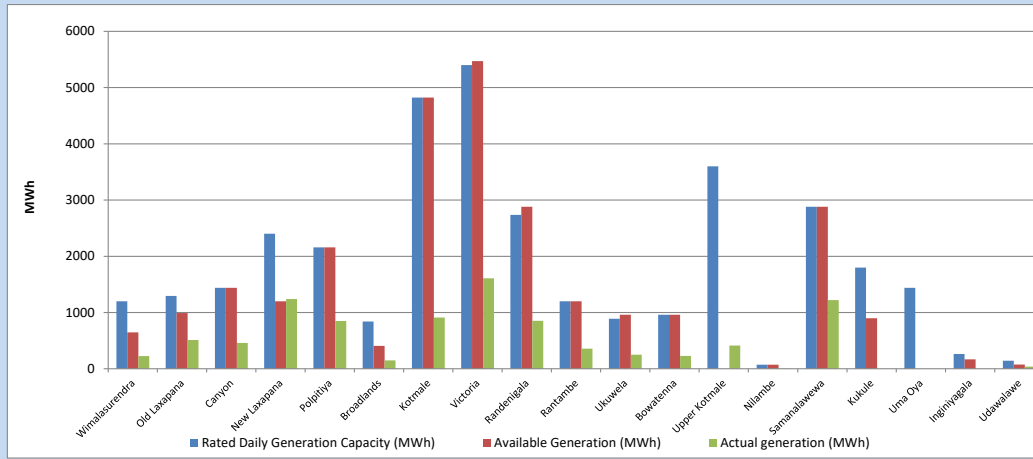


Plant availability is recorded at 6.00 am on

March 4, 2024

7. Major Hydro Plant Dispatch

March 3, 2024

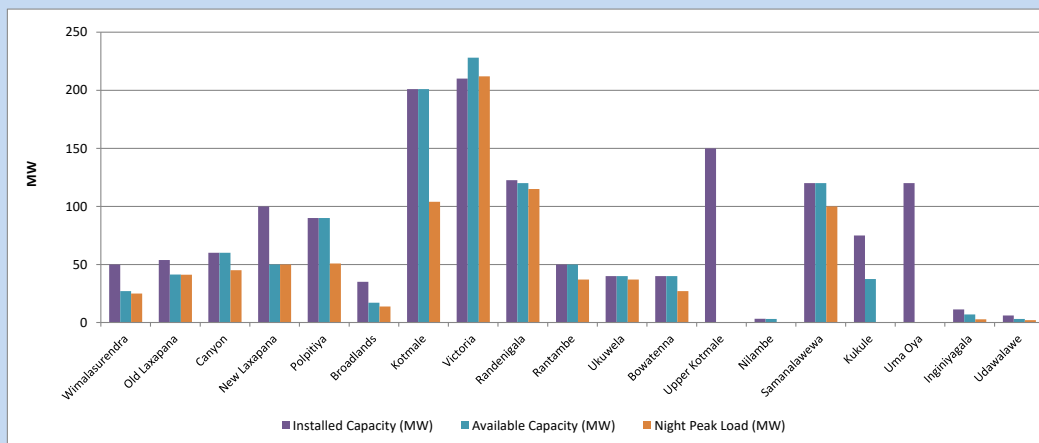


Available Generation is estimated based on plant availability at 6.00am on
Broadlands power plant is operating in the Commissioning Stage

March 4, 2024

8. Major Hydro Plant Loading at Night Peak

March 3, 2024



Plant availability is recorded at 6.00 am on
Broadlands power plant is operating in the Commissioning Stage

March 4, 2024

9. Summary of Major Plant performance

Table 05

Plant	Maximum Available Total Capacity	Plant Availability	Night peak Load	Plant Dispatch
	(MW)	(MW)	(MW)	(MWh)
Wimalasurendra	50	27	25	227
Old Laxapana	54	41	41	511
Canyon	60	60	45	459
New Laxapana	100	50	50	1,241
Polpitiya	90	90	51	850
Broadlands	35	17	14	150
Kotmale	201	201	104	910
Victoria	210	228	212	1,609
Randenigala	123	120	115	853
Rantambe	50	50	37	357
Ukuwela	40	40	37	249
Bowatenna	40	40	27	229
Upper Kotmale	150	0	0	412
Nilambe	3	3	0	3
Samanalawewa	120	120	100	1,221
Kukule	75	38	0	0
Uma Oya (Testing)	120	0	0	0
Inginiyagala	11	7	3	0
Udawalawe	6	3	2	38
Puttalam Coal I	270	270	271	5,900
Puttalam Coal II	270	270	270	6,026
Puttalam Coal III	270	270	271	5,814
KPS Small GTs	54	16	0	0
KPS GT 7	115	115	0	0
KCCP	165	150	148	3,645
Sapugaskanda A	70	66	64	1,252
Sapugaskanda B	72	54	54	1,025
Uthura Janani	22	24	23	160
Barge CEB	62	60	44	562
CEB-Hambantota	30	19	0	0
CEB-Mathugama	20	12	0	0
ACE Matara	24	0	0	0
Asia Power	50	0	0	0
KCCPS -2	163	155	0	0
West Coast	270	270	0	1,158
Nothern Power	36	0	0	0
ACE Embilipitiya	93	93	90	522
Total	3,594	2,979	2,196	38,316

Note-

Plant availability is the availability recorded at 6 am on

March 4, 2024

Installed Capacity is sourced from CEB Annual Report- 2022

10. Contribution to the Night Peak in MW

March 3, 2024

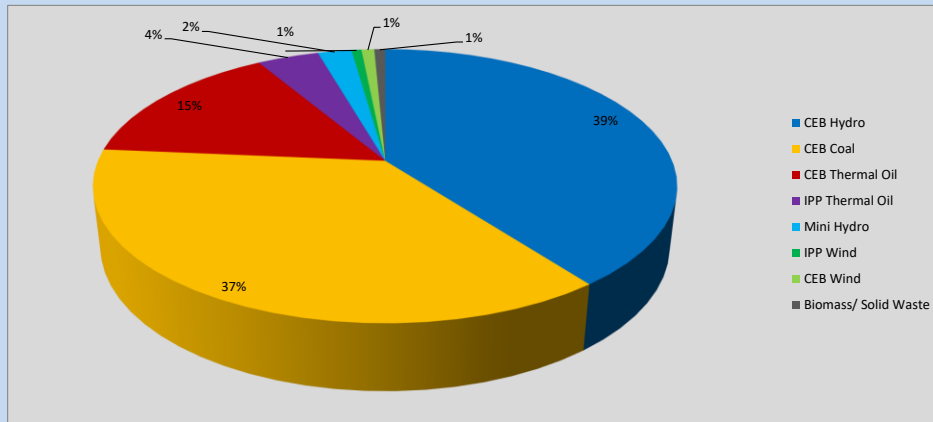


Table 06

CEB Hydro	876	MW
CEB Coal	812	MW
CEB Thermal Oil	333	MW
IPP Thermal Oil	90	MW
Mini Hydro (Telemetered)	49	MW
IPP Wind	14.5	MW
CEB Wind	18.7	MW
Biomass/ Solid Waste	16	MW

Recorded Peak Demand Data

Table 07

Night Peak*	2,209	MW
Day Peak Maximum Demand	1,702	MW
Day Peak Minimum Demand	1,338	MW
Off Peak Minimum Demand	1,426	MW

Above figures are excluding contribution from roof top solar, non telemetered solar and mini hydro plants

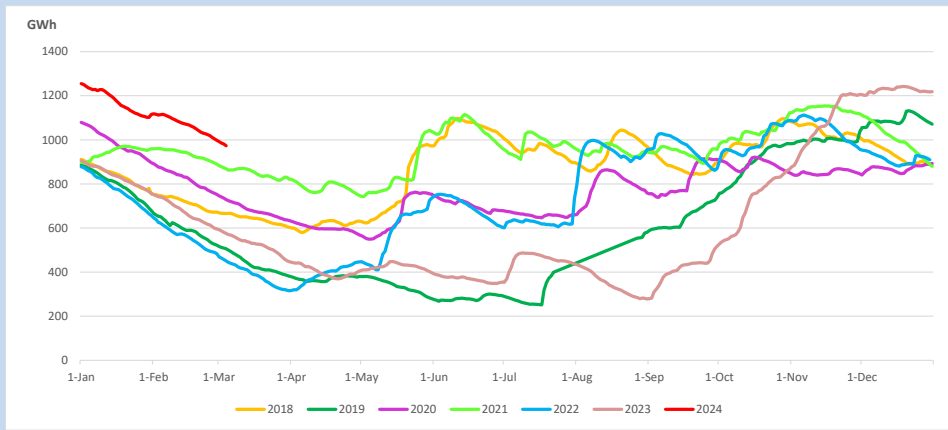
Reservoir Levels -

as at 06.00 Hr on March 4, 2024

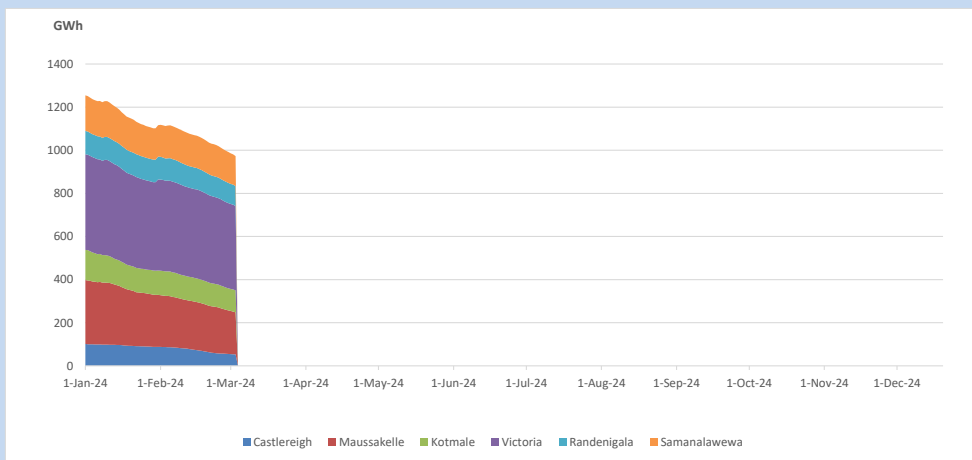


Total Reservoir Level 973.3 GWh
% of Total capacity 76.1%

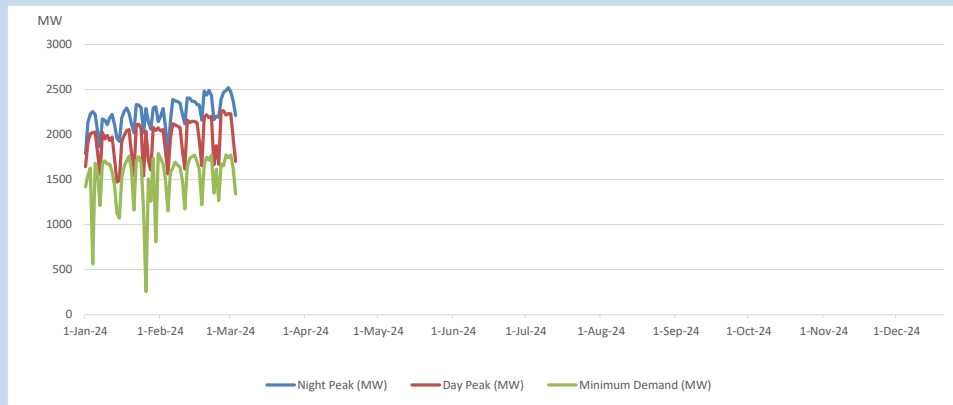
11. Comparison of Total Reservoir Storage Levels with Past Years



12. Variation of Major Hydro Reservoir Levels in the current year (GWh)



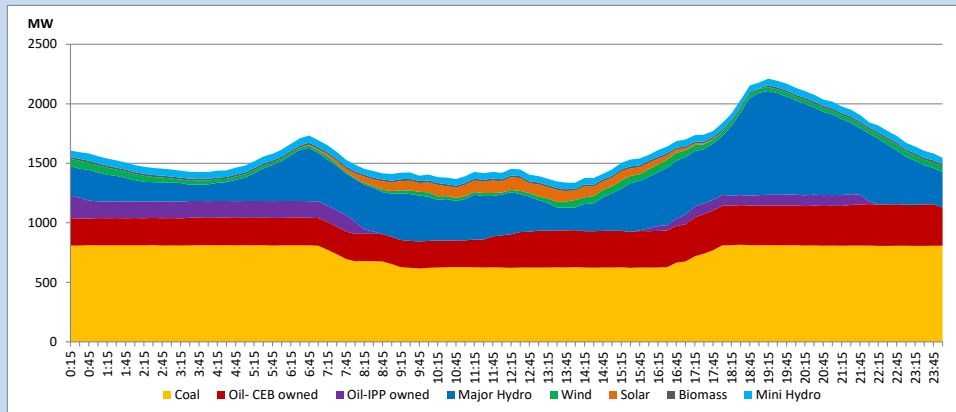
13. Variation of Demand during the current year



The above figures are excluding contribution from roof top solar, non telemetered solar and mini hydro plants

14. Daily Load Curve

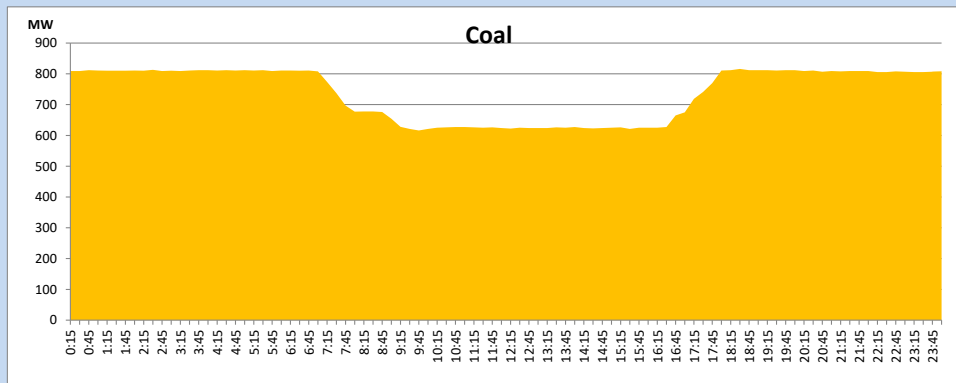
March 3, 2024



Solar and wind data is based on Telemetered Power Stations only

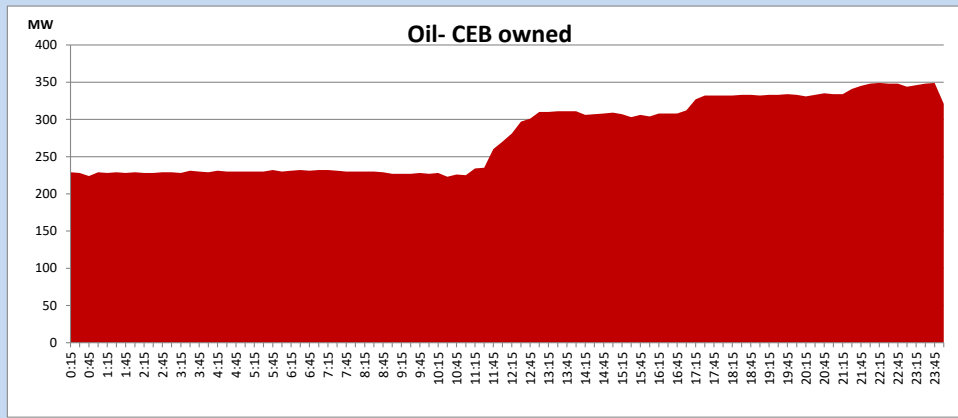
Coal Generation during

March 3, 2024



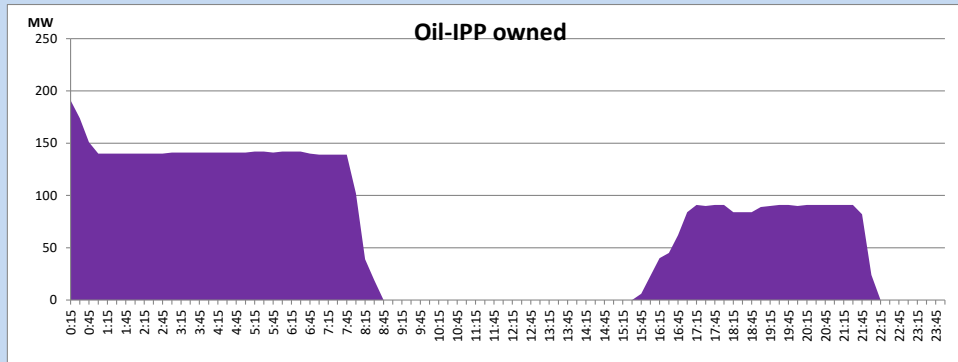
CEB Oil Plant Generation during

March 3, 2024



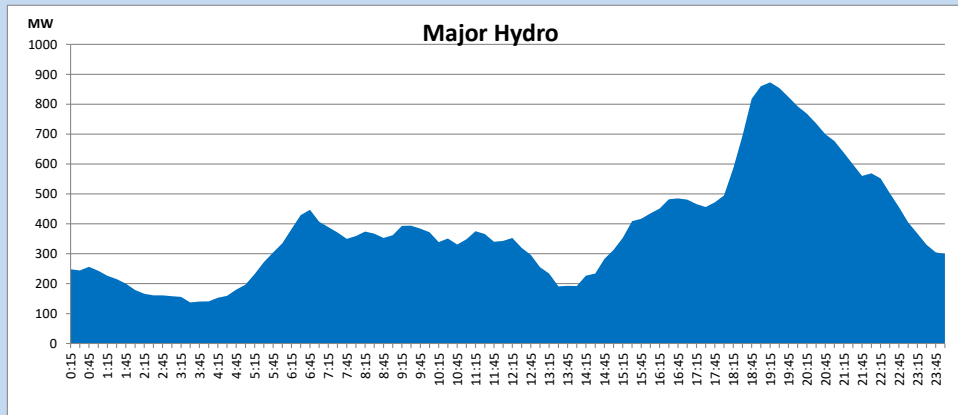
IPP Oil Plant Generation during

March 3, 2024



Major Hydro Generation during

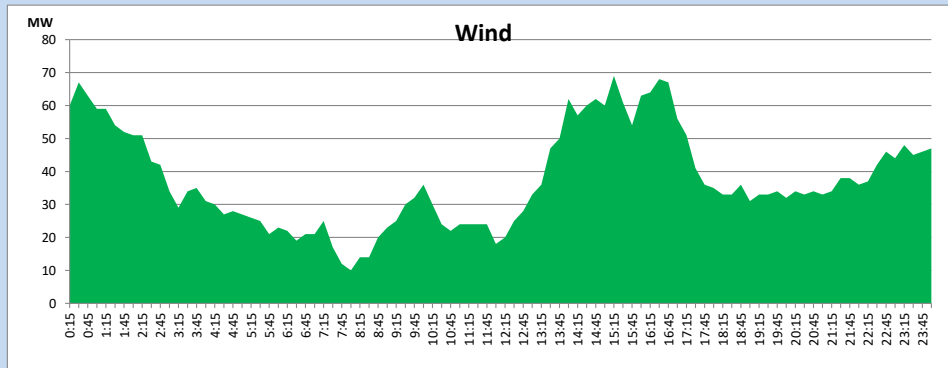
March 3, 2024



Wind Generation during

March 3, 2024

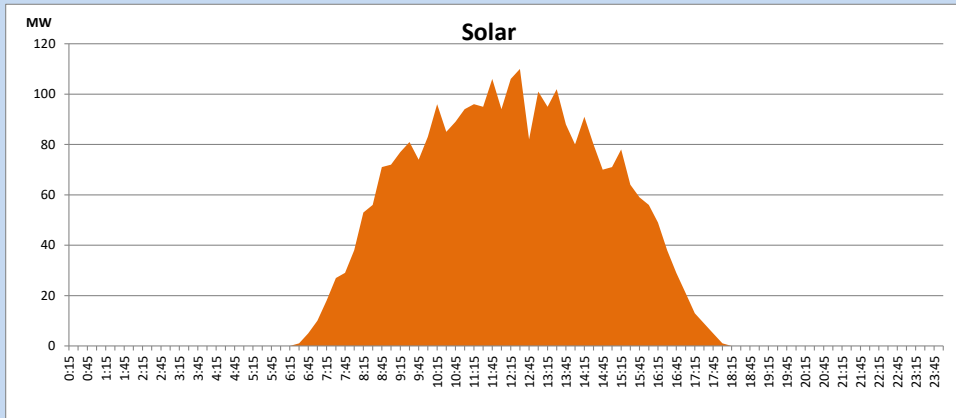
Based on Telemetered Power Stations only



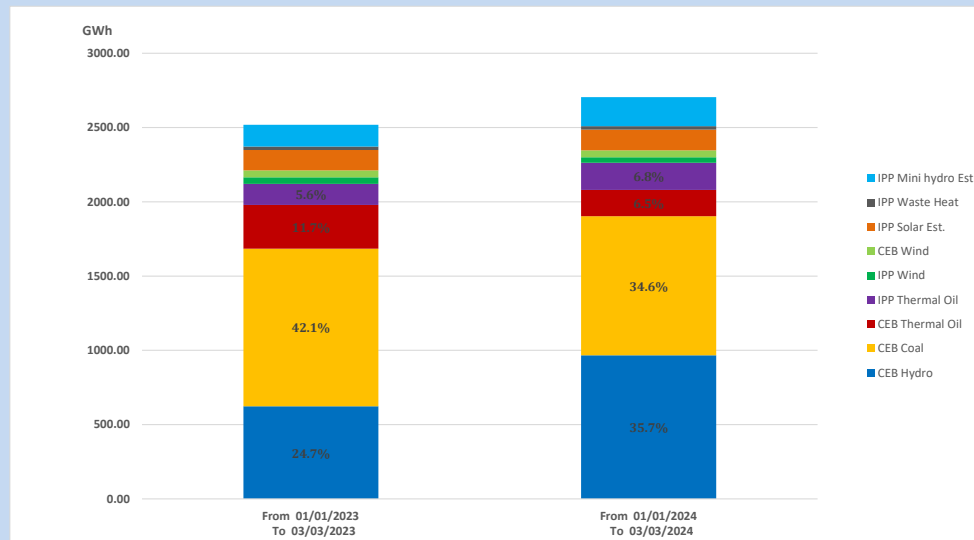
Solar Generation during

March 3, 2024

Based on Telemetered Power Stations only



15. Cumulative Dispatch Comparison with Last Year



Cumulative dispatch
 From 01/01/2023 To 03/03/2023
 From 01/01/2024 To 03/03/2024

2519 GWh
 2705 GWh

The above figures are including contribution from roof top solar, non telemetered solar and mini hydro plants)
 Unserviced energy due to power cuts has been excluded in 2023

Thermal Plant Fuel types

Table 08

Power Station	Primary Fuel
CEB Thermal	
Sapugaskanda 1	Heavy Fuel
Sapugaskanda 2	Heavy Fuel
Kelanitissa Small Gas Turbines	Auto Diesel
GT 7 - Kelanitissa	Auto Diesel
Kelanitissa CCY	Naphtha or Diesel
Lakvijaya 1	Coal
Lakvijaya 2	Coal
Lakvijaya 3	Coal
Uthuru Janani	Heavy Fuel
Barge CEB	Heavy Fuel
KCCPS -2	Auto Diesel

Power Station	Primary Fuel
Private Thermal	
West Coast	Auto Diesel / Heavy Fuel
ACE Embilipitiya	Heavy Fuel

Major Incidents reported during the day

March 3, 2024

1) Nil.