

Generation and Reservoirs Statistics

March 2, 2024



PUBLIC UTILITIES COMMISSION OF SRI LANKA

1. Daily Generation Mix in MWh

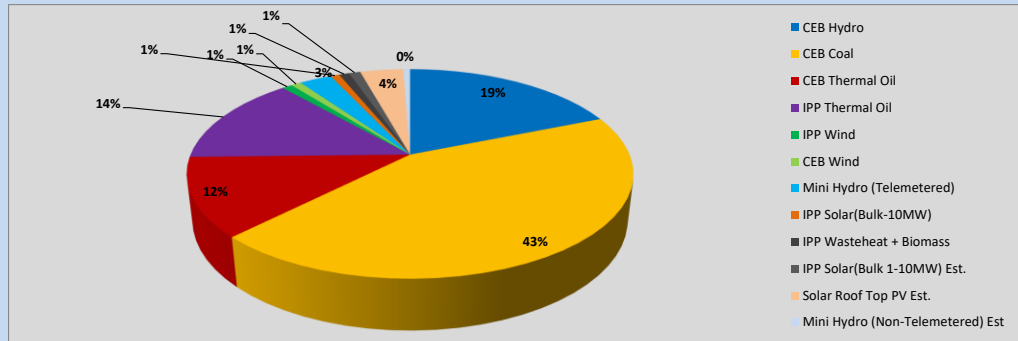


Table 01

	Generation (MWh)
CEB Hydro	8,462
CEB Coal	19,538
CEB Thermal Oil	5,467
IPP Thermal Oil	6,213
IPP Wind	391
CEB Wind	390
Mini Hydro (Telemetered)	1,256
IPP Solar (Bulk)	344
IPP Waste heat + Biomass	394
Total Generation (Excluding estimated figures)	42,455
* Estimated unserved energy	0
* Estimated Mini Hydro (Non telemetered)	268
* Estimated IPP Solar PV (Bulk 1-10MW)	445
* Estimated Solar Roof Top PV	1670
Total Generation (Including estimated figures)	44,838

* Estimated figures of CEB generation report

Table 02

	Installed Capacity (MW)
CEB Hydro	1644
CEB Coal	810
CEB Thermal Oil	773.1
IPP Thermal Oil (West Coast and ACE Embilipitiya)	362.9
IPP Wind	163
CEB Wind	100
Mini Hydro	422
IPP Waste heat + Biomass	54
IPP Solar	137
Rooftop Solar (Ordinary)	293
Rooftop Solar (LT Bulk)	272
Rooftop Solar (HT Bulk)	74

Data Source - Monthly Review Report [Nov-2023]

2. Cumulative Dispatch

Following data excludes the contribution from roof top solar, non telemetered solar and mini hydro plants

Table 03 - Current Month

Category	Dispatch (GWh)	
CEB Hydro	19	20.35%
CEB Coal	39	41.95%
CEB Thermal Oil	11	12.03%
IPP Thermal	13	13.63%
SPP Wind	1	1.15%
CEB Wind	1	1.30%
Mini Hydro *	3	3.58%
IPP Solar *	5	5.19%
IPP Waste heat + BMP	1	0.83%
Total	93	

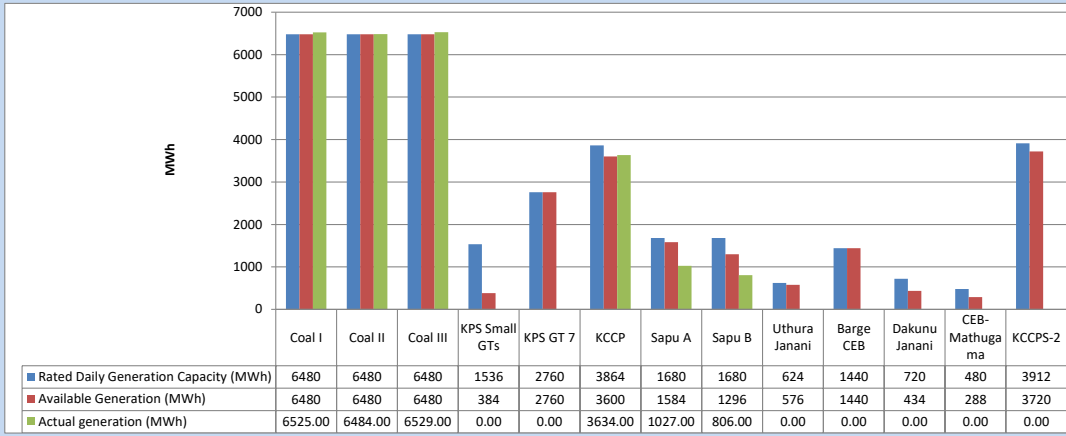
Table 04 - Current Year

Category	Dispatch (GWh)	
CEB Hydro	957	35.93%
CEB Coal	919	34.49%
CEB Thermal Oil	170	6.37%
IPP Thermal	181	6.81%
SPP Wind	37	1.39%
CEB Wind	45	1.70%
Mini Hydro *	194	7.29%
IPP Solar *	137	5.15%
IPP Waste heat	23	0.87%
Total	2,664	

*Including estimated contribution from non telemetered plants

3. CEB owned Thermal Plant Dispatch

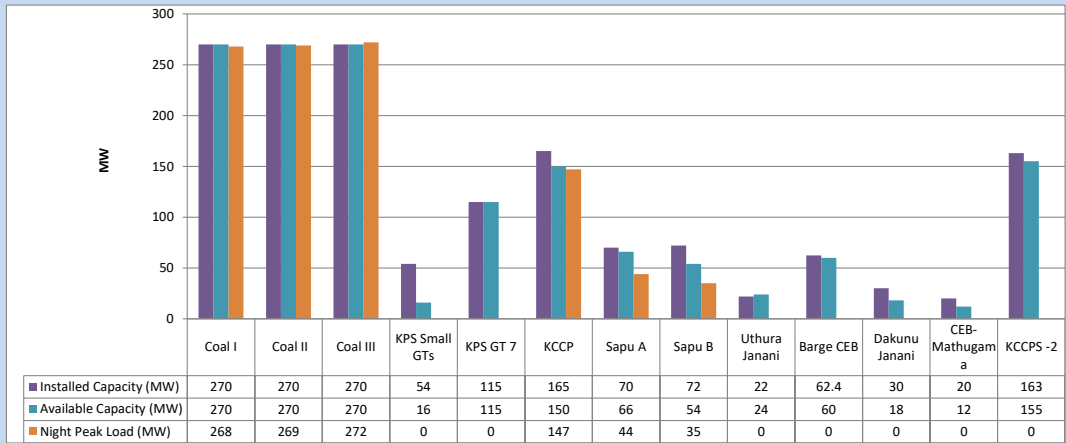
March 2, 2024



Available Generation is estimated based on plant availability at 6.00am on

March 3, 2024

4. CEB owned Thermal Plant Loading at the Night Peak

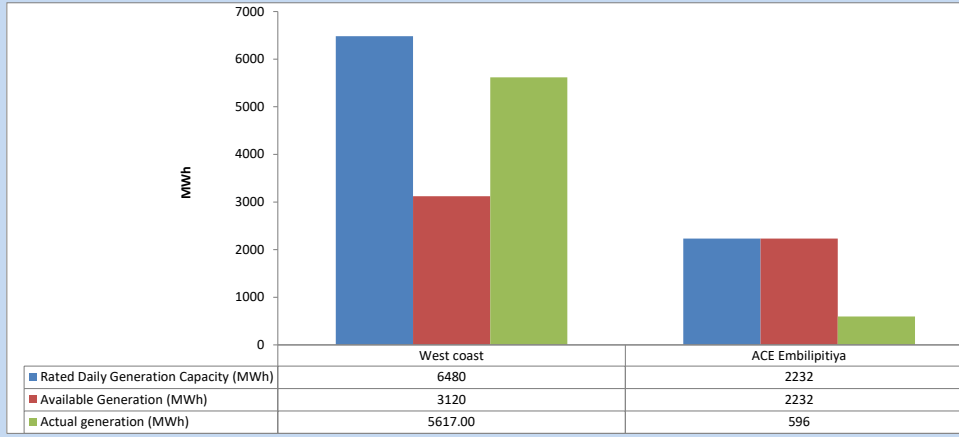


Plant availability is recorded at 6.00 am on

March 3, 2024

5. IPP owned Thermal Plant Dispatch

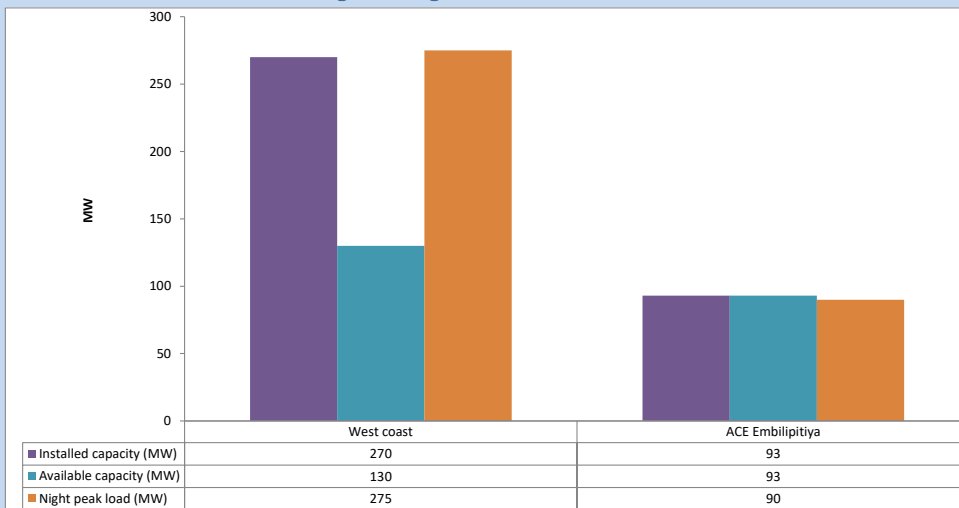
March 2, 2024



Available Generation is estimated based on plant availability at 6.00am on

March 3, 2024

6. IPP owned Thermal Plant Loading at the Night Peak

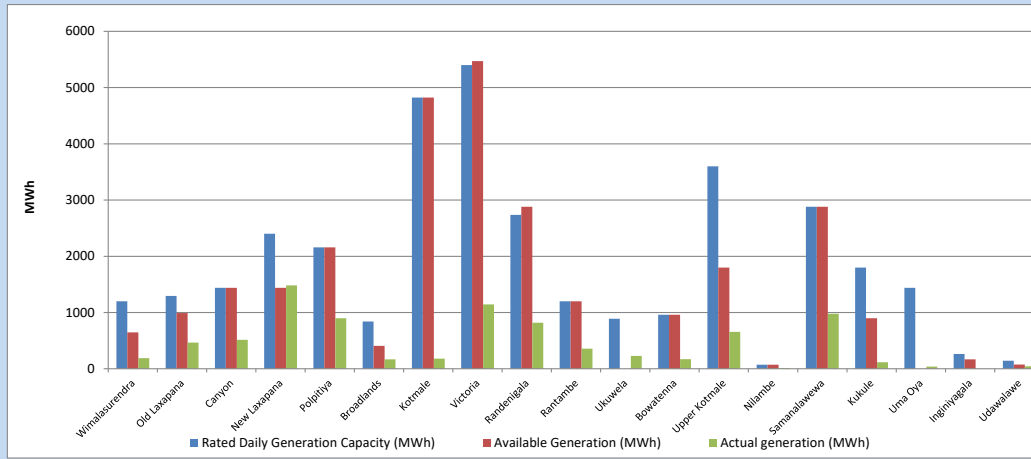


Plant availability is recorded at 6.00 am on

March 3, 2024

7. Major Hydro Plant Dispatch

March 2, 2024

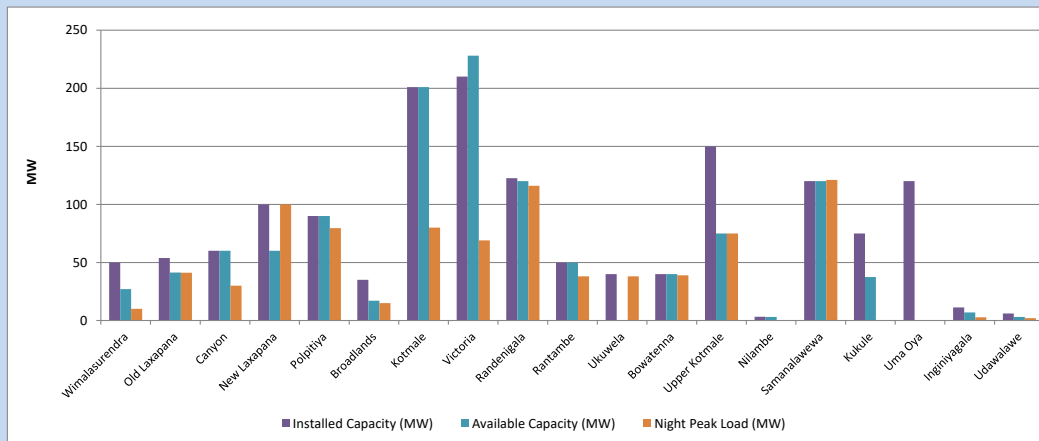


Available Generation is estimated based on plant availability at 6.00am on
Broadlands power plant is operating in the Commissioning Stage

March 3, 2024

8. Major Hydro Plant Loading at Night Peak

March 2, 2024



Plant availability is recorded at 6.00 am on
Broadlands power plant is operating in the Commissioning Stage

March 3, 2024

9. Summary of Major Plant performance

Table 05

Plant	Maximum Available Total Capacity	Plant Availability	Night peak Load	Plant Dispatch
	(MW)	(MW)	(MW)	(MWh)
Wimalasurendra	50	27	10	189
Old Laxapana	54	41	41	464
Canyon	60	60	30	516
New Laxapana	100	60	100	1,481
Polpitiya	90	90	80	900
Broadlands	35	17	15	167
Kotmale	201	201	80	180
Victoria	210	228	69	1,146
Randenigala	123	120	116	818
Rantambe	50	50	38	359
Ukuwela	40	0	38	230
Bowatenna	40	40	39	171
Upper Kotmale	150	75	75	657
Nilambe	3	3	0	11
Samanalawewa	120	120	121	978
Kukule	75	38	0	115
Uma Oya (Testing)	120	0	0	38
Inginiyagala	11	7	3	0
Udawalawe	6	3	2	43
Puttalam Coal I	270	270	268	6,525
Puttalam Coal II	270	270	269	6,484
Puttalam Coal III	270	270	272	6,529
KPS Small GTs	54	16	0	0
KPS GT 7	115	115	0	0
KCCP	165	150	147	3,634
Sapugaskanda A	70	66	44	1,027
Sapugaskanda B	72	54	35	806
Uthura Janani	22	24	0	0
Barge CEB	62	60	0	0
CEB-Hambantota	30	18	0	0
CEB-Mathugama	20	12	0	0
ACE Matara	24	0	0	0
Asia Power	50	0	0	0
KCCPS -2	163	155	0	0
West Coast	270	130	275	5,617
Nothern Power	36	0	0	0
ACE Embilipitiya	93	93	90	596
Total	3,594	2,883	2,358	42,456

Note-

Plant availability is the availability recorded at 6 am on

March 3, 2024

Installed Capacity is sourced from CEB Annual Report- 2022

10. Contribution to the Night Peak in MW

March 2, 2024

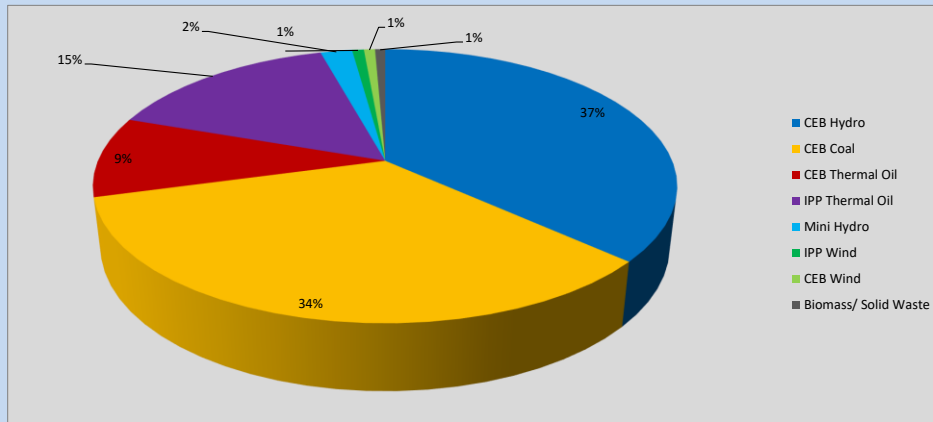


Table 06

CEB Hydro	869	MW
CEB Coal	809	MW
CEB Thermal Oil	226	MW
IPP Thermal Oil	365	MW
Mini Hydro (Telemetered)	50	MW
IPP Wind	18.5	MW
CEB Wind	17.4	MW
Biomass/ Solid Waste	16	MW

Recorded Peak Demand Data

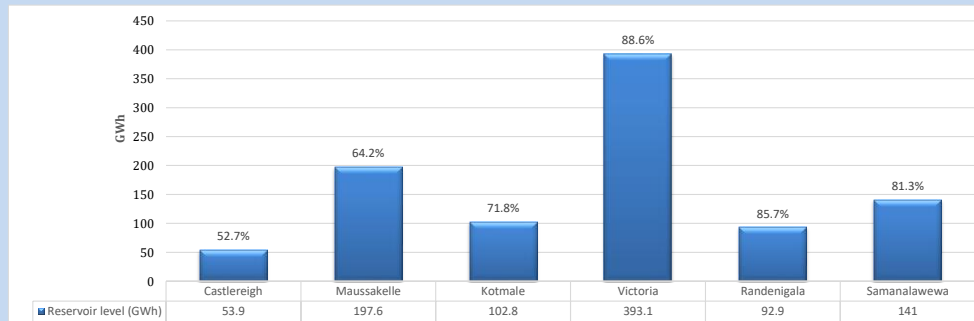
Table 07

Night Peak*	2,370	MW
Day Peak Maximum Demand	1,948	MW
Day Peak Minimum Demand	1,622	MW
Off Peak Minimum Demand	1,467	MW

Above figures are excluding contribution from roof top solar, non telemetered solar and mini hydro plants

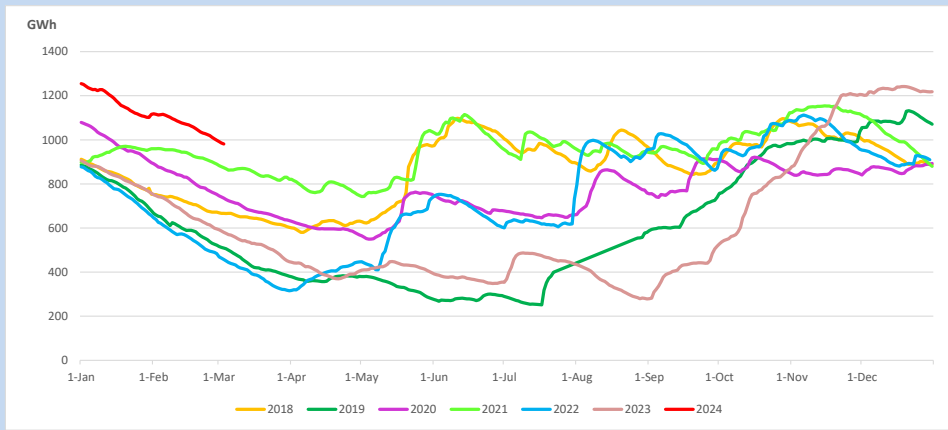
Reservoir Levels -

as at 06.00 Hr on March 3, 2024

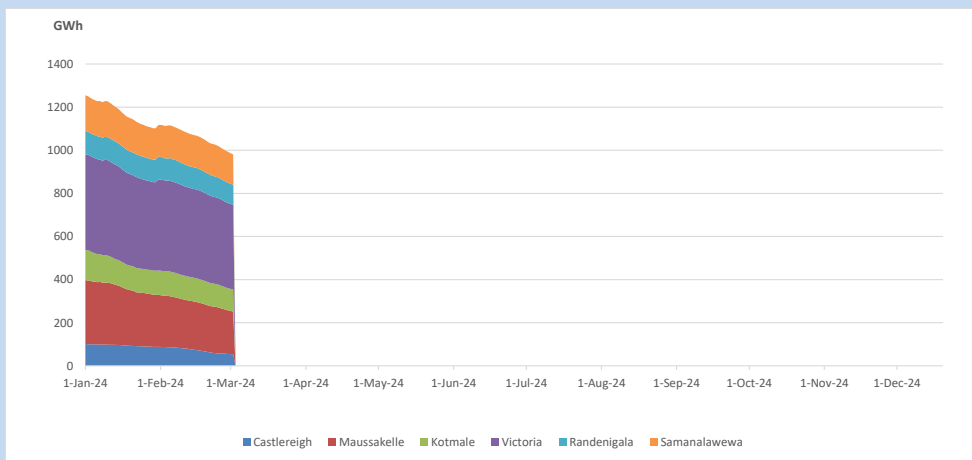


Total Reservoir Level 981.3 GWh
% of Total capacity 76.7%

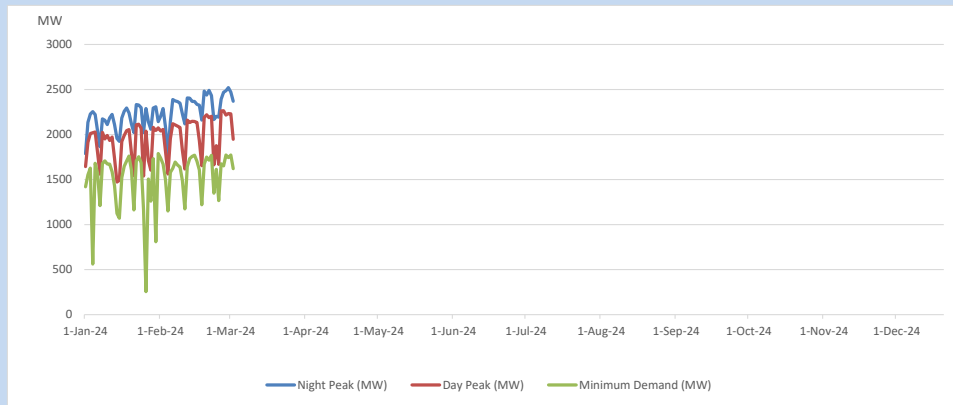
11. Comparison of Total Reservoir Storage Levels with Past Years



12. Variation of Major Hydro Reservoir Levels in the current year (GWh)



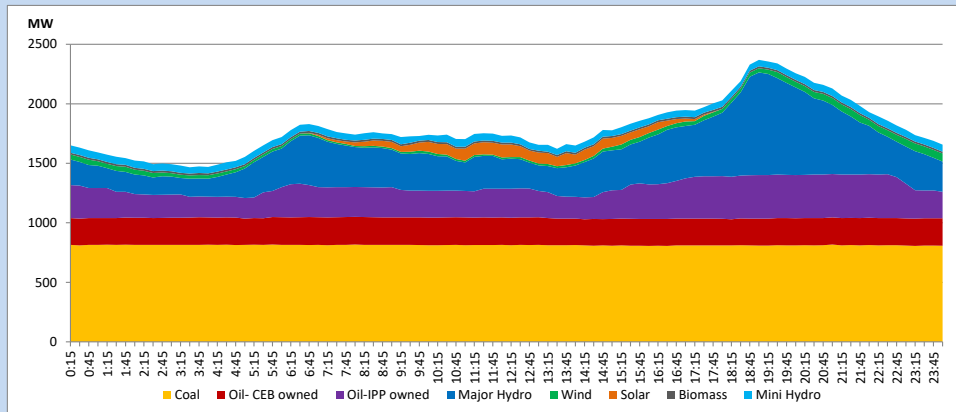
13. Variation of Demand during the current year



The above figures are excluding contribution from roof top solar, non telemetered solar and mini hydro plants

14. Daily Load Curve

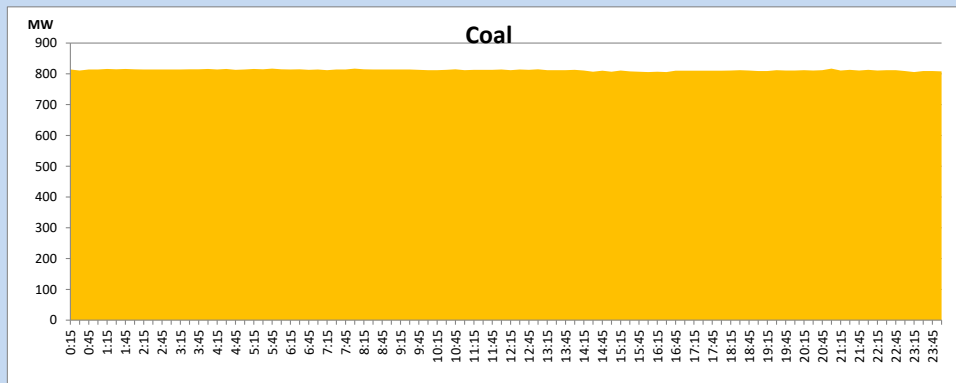
March 2, 2024



Solar and wind data is based on Telemetered Power Stations only

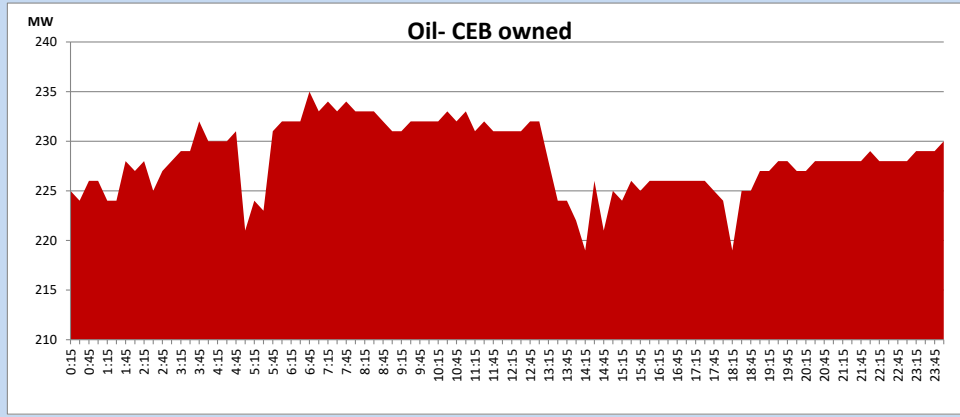
Coal Generation during

March 2, 2024



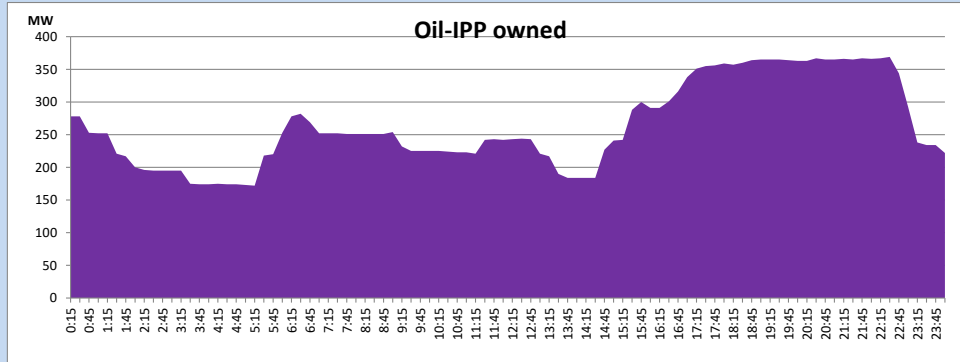
CEB Oil Plant Generation during

March 2, 2024



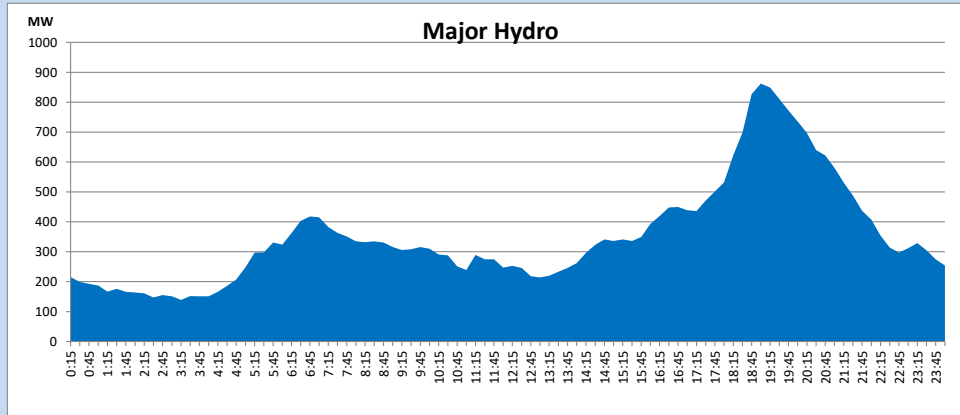
IPP Oil Plant Generation during

March 2, 2024



Major Hydro Generation during

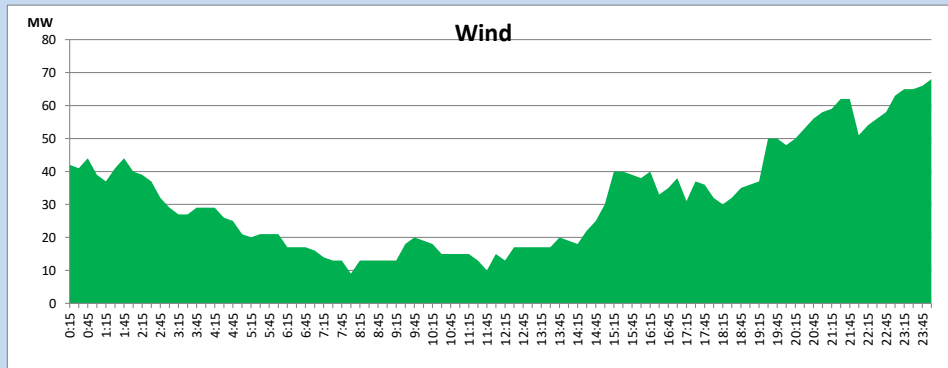
March 2, 2024



Wind Generation during

March 2, 2024

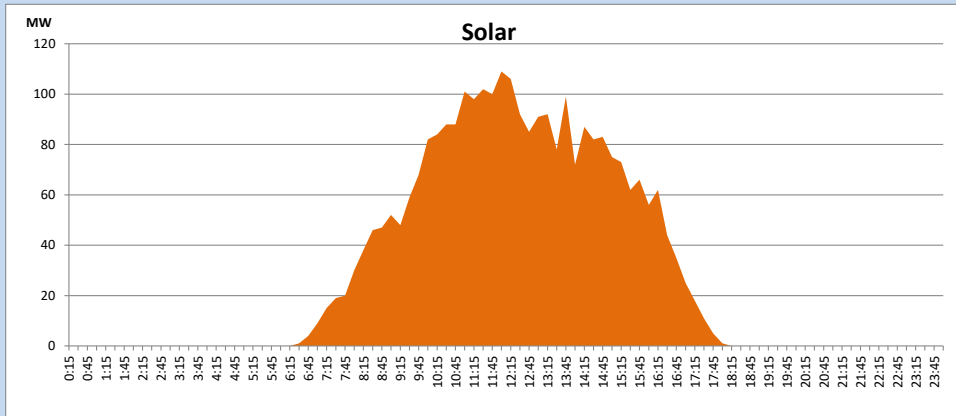
Based on Telemetered Power Stations only



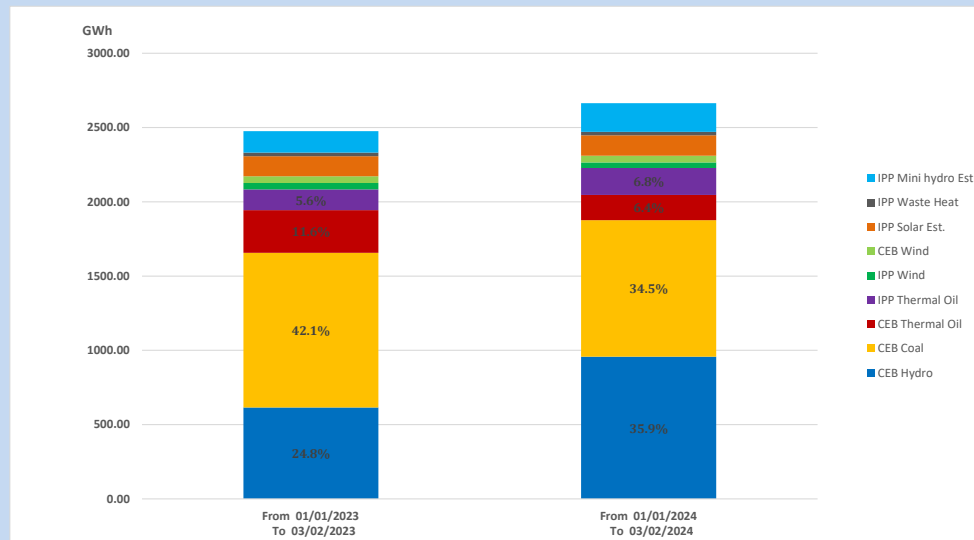
Solar Generation during

March 2, 2024

Based on Telemetered Power Stations only



15. Cumulative Dispatch Comparison with Last Year



Cumulative dispatch

From 01/01/2023 To 03/02/2023

2476 GWh

From 01/01/2024 To 03/02/2024

2664 GWh

The above figures are including contribution from roof top solar, non telemetered solar and mini hydro plants)

Unserviced energy due to power cuts has been excluded in 2023

Thermal Plant Fuel types

Table 08

Power Station	Primary Fuel
CEB Thermal	
Sapugaskanda 1	Heavy Fuel
Sapugaskanda 2	Heavy Fuel
Kelanitissa Small Gas Turbines	Auto Diesel
GT 7 - Kelanitissa	Auto Diesel
Kelanitissa CCY	Naphtha or Diesel
Lakvijaya 1	Coal
Lakvijaya 2	Coal
Lakvijaya 3	Coal
Uthuru Janani	Heavy Fuel
Barge CEB	Heavy Fuel
KCCPS -2	Auto Diesel

Power Station	Primary Fuel
Private Thermal	
West Coast	Auto Diesel / Heavy Fuel
ACE Embilipitiya	Heavy Fuel

Major Incidents reported during the day

March 2, 2024

1) Valachchenai GSS 132/33kV T/F 02 tripped only from the 33kV side at 09:43hrs along with 33kV feeder 04 and at the same time, 33kV B/S 01 tripped causing 33kV feeders 02, 06 & 08 to be dead, due to the operation of E/F protection. Valachchenai GSS 33kV B/S and T/F 02 was normalized at 09:43hrs and All the feeders were normalized by 09:51hrs.