

Generation and Reservoirs Statistics

March 1, 2024



PUBLIC UTILITIES COMMISSION OF SRI LANKA

1. Daily Generation Mix in MWh

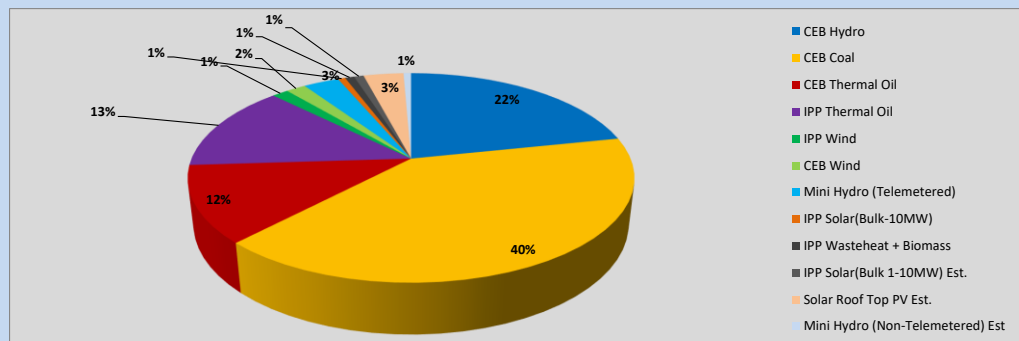


Table 01

	Generation (MWh)
CEB Hydro	10,474
CEB Coal	19,493
CEB Thermal Oil	5,719
IPP Thermal Oil	6,473
IPP Wind	679
CEB Wind	824
Mini Hydro (Telemetered)	1,483
IPP Solar (Bulk)	308
IPP Waste heat + Biomass	382
Total Generation (Excluding estimated figures)	45,835
* Estimated unserved energy	0
* Estimated Mini Hydro (Non telemetered)	316
* Estimated IPP Solar PV (Bulk 1-10MW)	402
* Estimated Solar Roof Top PV	1670
Total Generation (Including estimated figures)	48,223

* Estimated figures of CEB generation report

Table 02

	Installed Capacity (MW)
CEB Hydro	1644
CEB Coal	810
CEB Thermal Oil	773.1
IPP Thermal Oil (West Coast)	362.9
IPP Wind	163
CEB Wind	100
Mini Hydro	422
IPP Waste heat + Biomass	54
IPP Solar	137
Rooftop Solar (Ordinary)	293
Rooftop Solar (LT Bulk)	272
Rooftop Solar (HT Bulk)	74

Data Source - Monthly Review Report [Nov-2023]

2. Cumulative Dispatch

Following data excludes the contribution from roof top solar, non telemetered solar and mini hydro plants

Table 03 - Current Month

Category	Dispatch (GWh)	
CEB Hydro	10	21.72%
CEB Coal	19	40.43%
CEB Thermal Oil	6	11.86%
IPP Thermal	6	13.42%
SPP Wind	1	1.41%
CEB Wind	1	1.70%
Mini Hydro *	2	3.73%
IPP Solar *	2	4.94%
IPP Waste heat + BMP	0	0.79%
Total	48	

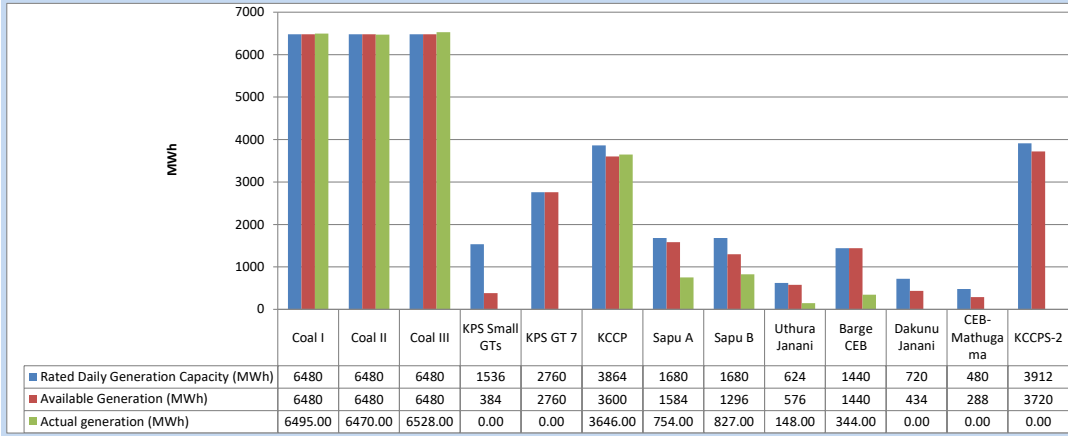
Table 04 - Current Year

Category	Dispatch (GWh)	
CEB Hydro	949	36.22%
CEB Coal	900	34.34%
CEB Thermal Oil	164	6.27%
IPP Thermal	175	6.69%
SPP Wind	37	1.40%
CEB Wind	45	1.72%
Mini Hydro *	193	7.35%
IPP Solar *	135	5.15%
IPP Waste heat	23	0.87%
Total	2,620	

*Including estimated contribution from non telemetered plants

3. CEB owned Thermal Plant Dispatch

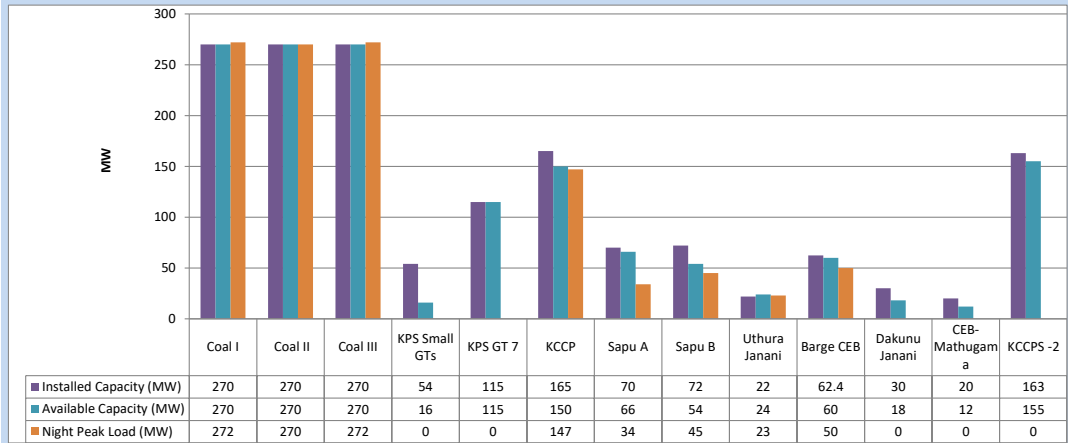
March 1, 2024



Available Generation is estimated based on plant availability at 6.00am on

March 2, 2024

4. CEB owned Thermal Plant Loading at the Night Peak

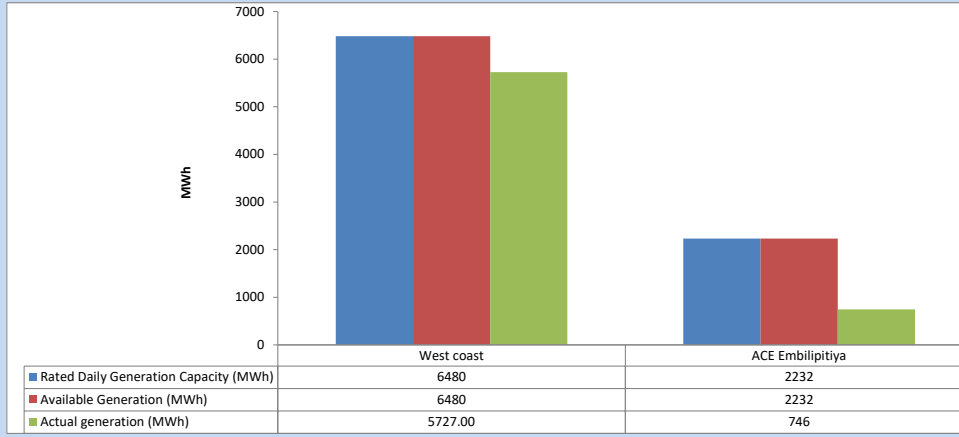


Plant availability is recorded at 6.00 am on

March 2, 2024

5. IPP owned Thermal Plant Dispatch

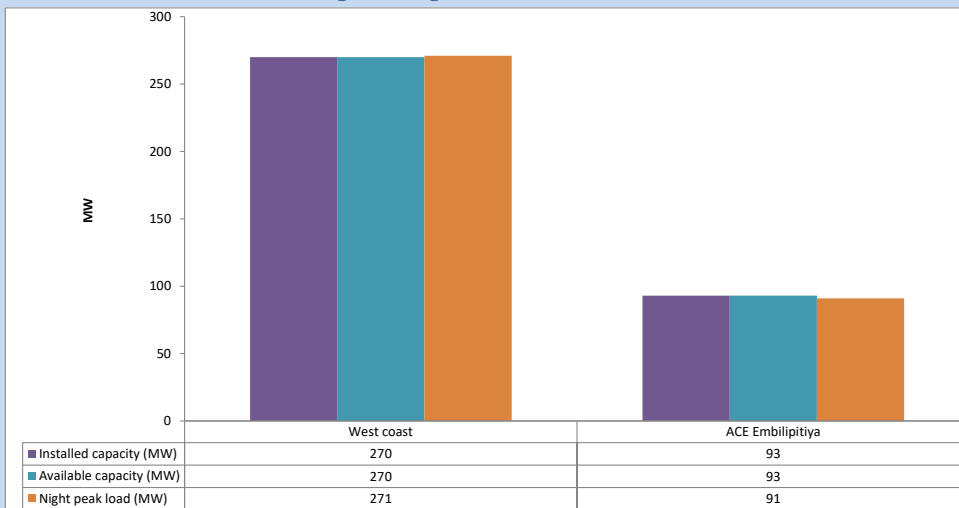
March 1, 2024



Available Generation is estimated based on plant availability at 6.00am on

March 2, 2024

6. IPP owned Thermal Plant Loading at the Night Peak

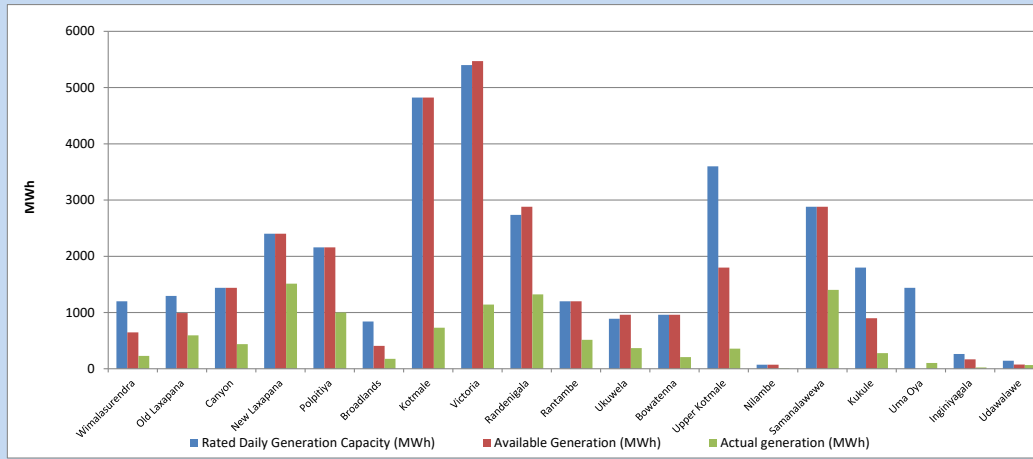


Plant availability is recorded at 6.00 am on

March 2, 2024

7. Major Hydro Plant Dispatch

March 1, 2024

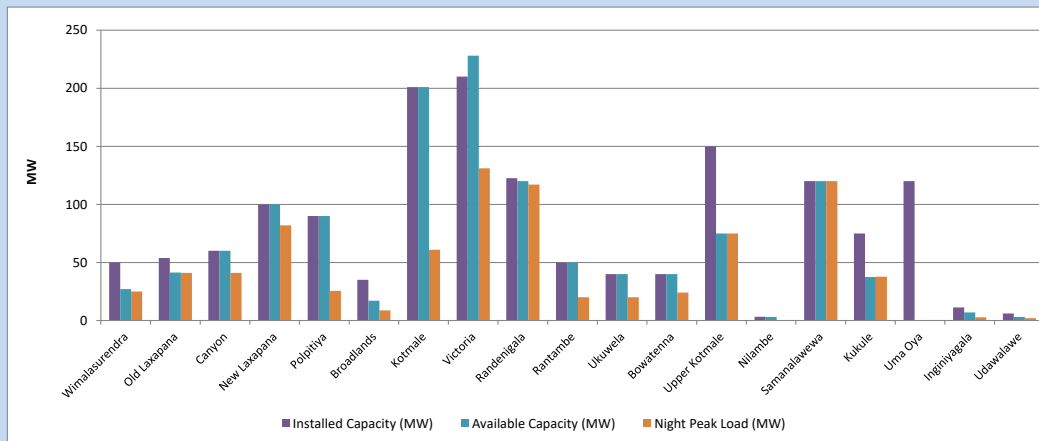


Available Generation is estimated based on plant availability at 6.00am on
Broadlands power plant is operating in the Commissioning Stage

March 2, 2024

8. Major Hydro Plant Loading at Night Peak

March 1, 2024



Plant availability is recorded at 6.00 am on
Broadlands power plant is operating in the Commissioning Stage

March 2, 2024

9. Summary of Major Plant performance

Table 05

Plant	Maximum Available Total Capacity	Plant Availability	Night peak Load	Plant Dispatch
	(MW)	(MW)	(MW)	(MWh)
Wimalasurendra	50	27	25	228
Old Laxapana	54	41	41	594
Canyon	60	60	41	438
New Laxapana	100	100	82	1,514
Polpitiya	90	90	26	1,000
Broadlands	35	17	9	177
Kotmale	201	201	61	730
Victoria	210	228	131	1,142
Randenigala	123	120	117	1,322
Rantambe	50	50	20	516
Ukuwela	40	40	20	367
Bowatenna	40	40	24	207
Upper Kotmale	150	75	75	357
Nilambe	3	3	0	9
Samanalawewa	120	120	120	1,404
Kukule	75	38	38	278
Uma Oya (Testing)	120	0	0	102
Inginiyagala	11	7	3	23
Udawalawe	6	3	2	66
Puttalam Coal I	270	270	272	6,495
Puttalam Coal II	270	270	270	6,470
Puttalam Coal III	270	270	272	6,528
KPS Small GTs	54	16	0	0
KPS GT 7	115	115	0	0
KCCP	165	150	147	3,646
Sapugaskanda A	70	66	34	754
Sapugaskanda B	72	54	45	827
Uthura Janani	22	24	23	148
Barge CEB	62	60	50	344
CEB-Hambantota	30	18	0	0
CEB-Mathugama	20	12	0	0
ACE Matara	24	0	0	0
Asia Power	50	0	0	0
KCCPS -2	163	155	0	0
West Coast	270	270	271	5,727
Nothern Power	36	0	0	0
ACE Embilipitiya	93	93	91	746
Total	3,594	3,103	2,443	45,835

Note-

Plant availability is the availability recorded at 6 am on

March 2, 2024

Installed Capacity is sourced from CEB Annual Report- 2022

10. Contribution to the Night Peak in MW

March 1, 2024

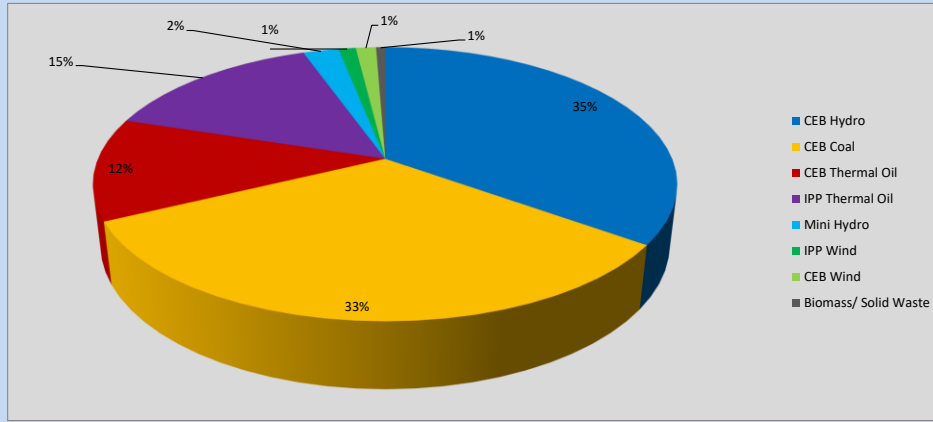


Table 06

CEB Hydro	862	MW
CEB Coal	814	MW
CEB Thermal Oil	299	MW
IPP Thermal Oil	362	MW
Mini Hydro (Telemetered)	58	MW
IPP Wind	28.4	MW
CEB Wind	33.1	MW
Biomass/ Solid Waste	15	MW

Recorded Peak Demand Data

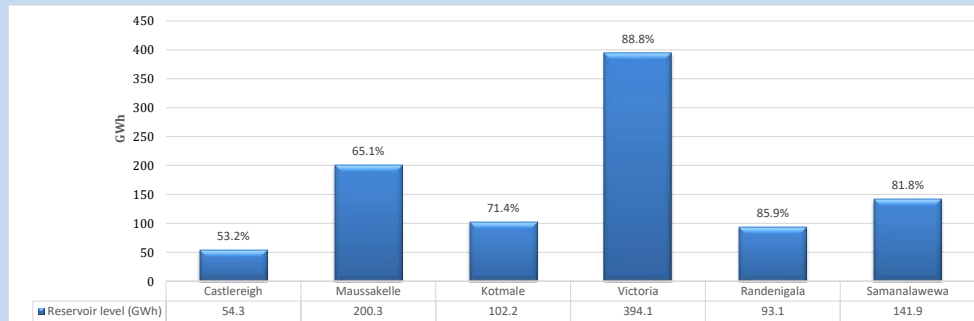
Table 07

Night Peak*	2,472	MW
Day Peak Maximum Demand	2,230	MW
Day Peak Minimum Demand	1,773	MW
Off Peak Minimum Demand	1,501	MW

Above figures are excluding contribution from roof top solar, non telemetered solar and mini hydro plants

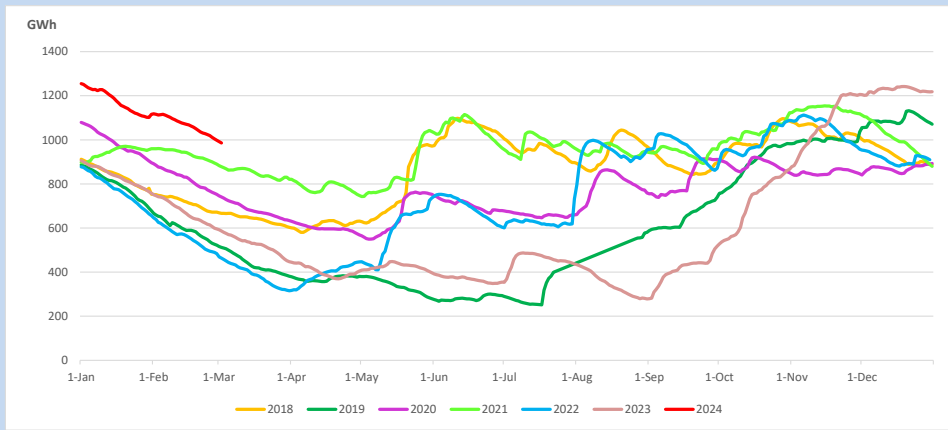
Reservoir Levels -

as at 06.00 Hr on March 2, 2024

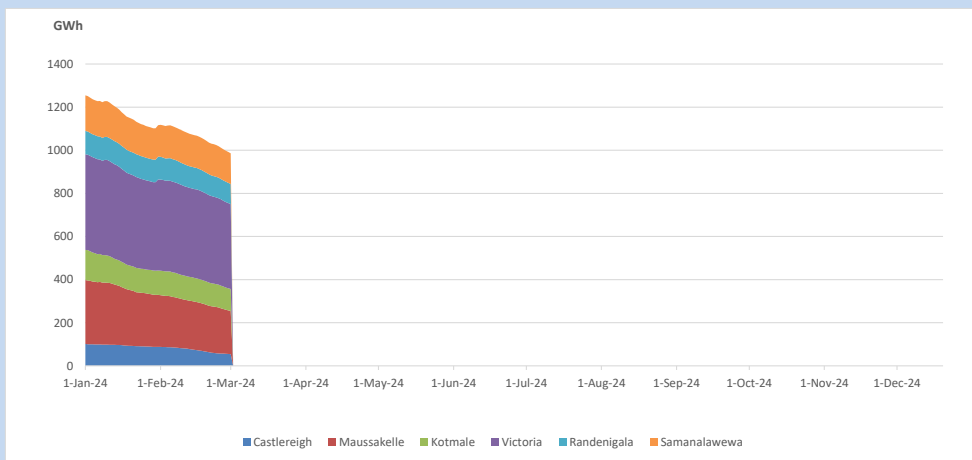


Total Reservoir Level 985.9 GWh
% of Total capacity 77.1%

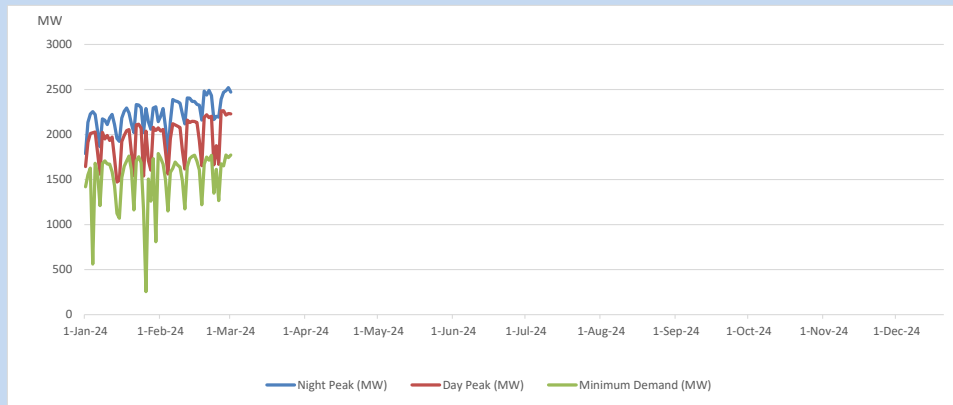
11. Comparison of Total Reservoir Storage Levels with Past Years



12. Variation of Major Hydro Reservoir Levels in the current year (GWh)



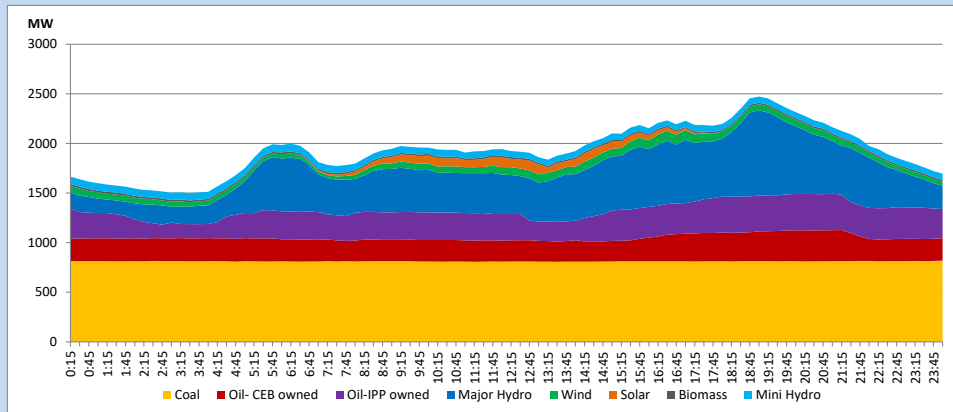
13. Variation of Demand during the current year



The above figures are excluding contribution from roof top solar, non telemetered solar and mini hydro plants

14. Daily Load Curve

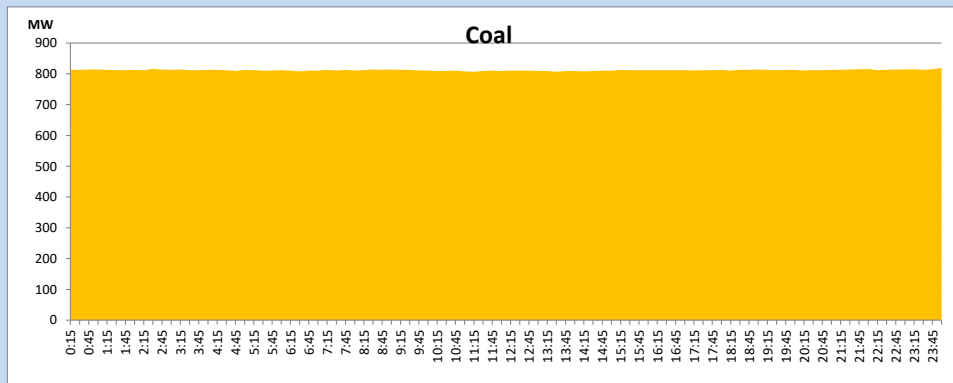
March 1, 2024



Solar and wind data is based on Telemetered Power Stations only

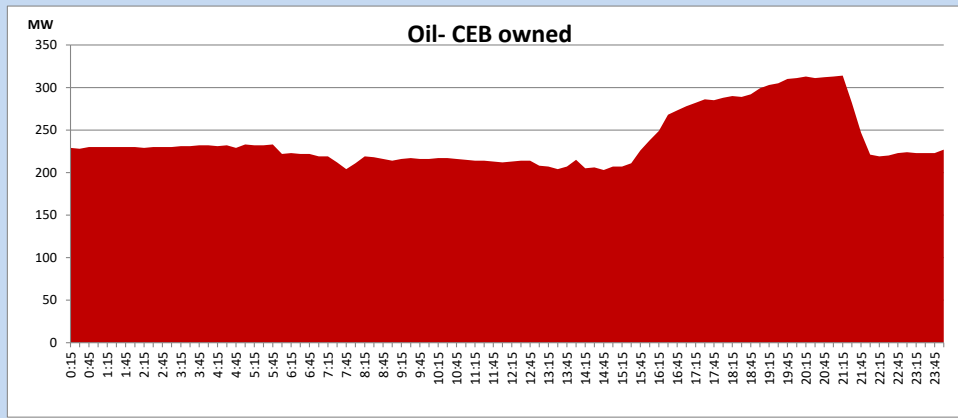
Coal Generation during

March 1, 2024



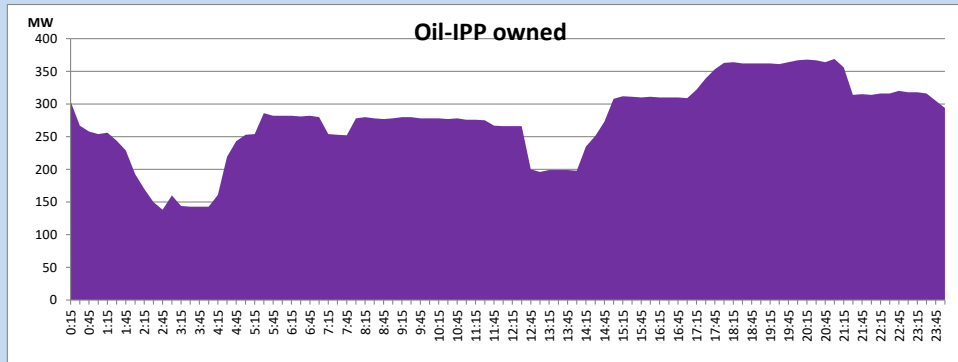
CEB Oil Plant Generation during

March 1, 2024



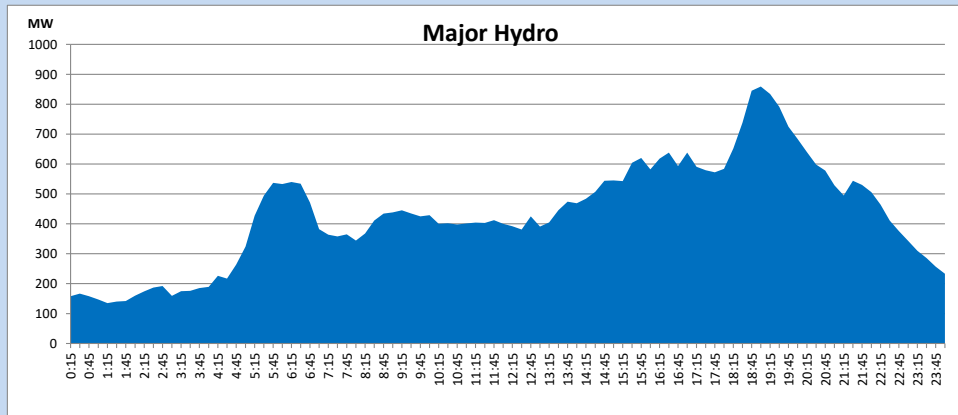
IPP Oil Plant Generation during

March 1, 2024



Major Hydro Generation during

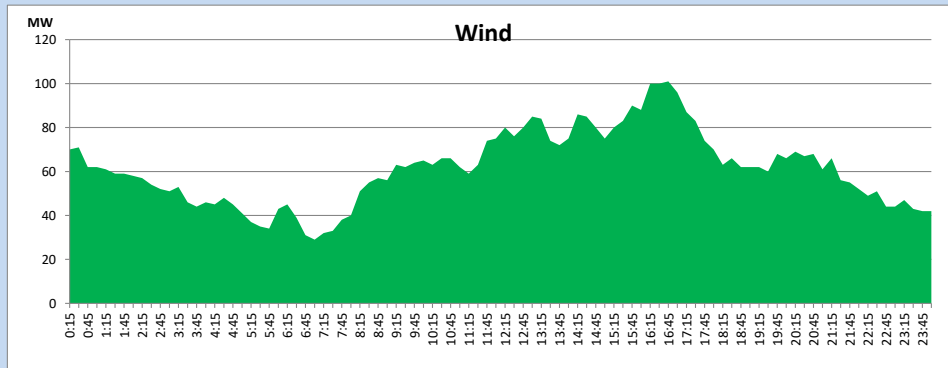
March 1, 2024



Wind Generation during

March 1, 2024

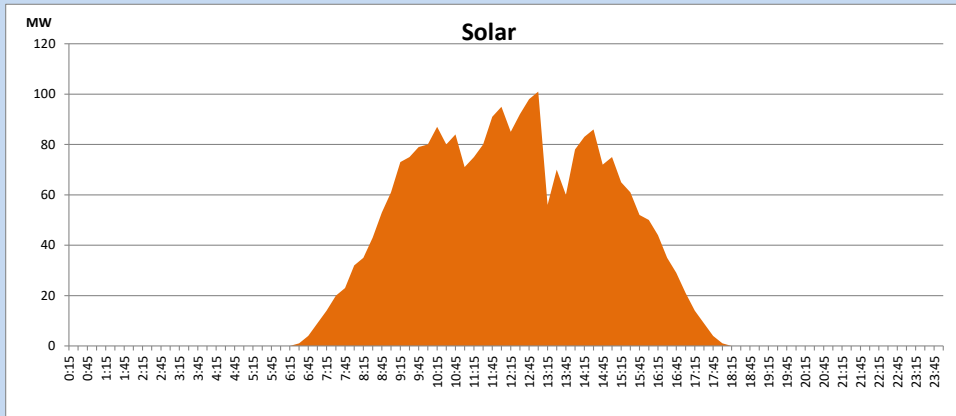
Based on Telemetered Power Stations only



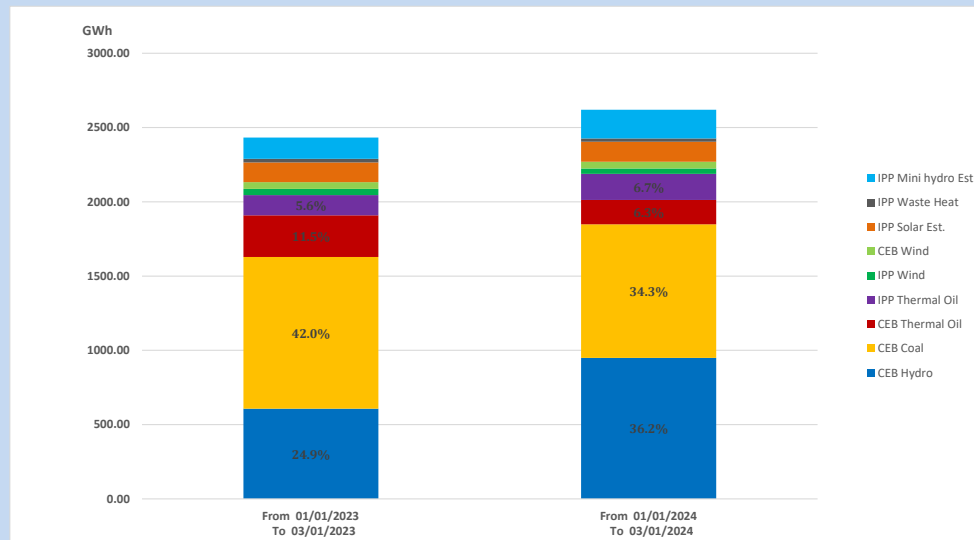
Solar Generation during

March 1, 2024

Based on Telemetered Power Stations only



15. Cumulative Dispatch Comparison with Last Year



Cumulative dispatch

From 01/01/2023 To 03/01/2023

2433 GWh

From 01/01/2024 To 03/01/2024

2620 GWh

The above figures are including contribution from roof top solar, non telemetered solar and mini hydro plants)

Unserviced energy due to power cuts has been excluded in 2023

Thermal Plant Fuel types

Table 08

Power Station	Primary Fuel
CEB Thermal	
Sapugaskanda 1	Heavy Fuel
Sapugaskanda 2	Heavy Fuel
Kelanitissa Small Gas Turbines	Auto Diesel
GT 7 - Kelanitissa	Auto Diesel
Kelanitissa CCY	Naphtha or Diesel
Lakvijaya 1	Coal
Lakvijaya 2	Coal
Lakvijaya 3	Coal
Uthuru Janani	Heavy Fuel
Barge CEB	Heavy Fuel
KCCPS -2	Auto Diesel

Power Station	Primary Fuel
Private Thermal	
West Coast	Auto Diesel / Heavy Fuel
ACE Embilipitiya	Heavy Fuel

Major Incidents reported during the day

March 1, 2024

Nil.