

# Generation and Reservoirs Statistics

January 30, 2024



PUBLIC UTILITIES COMMISSION OF SRI LANKA

## 1. Daily Generation Mix in MWh

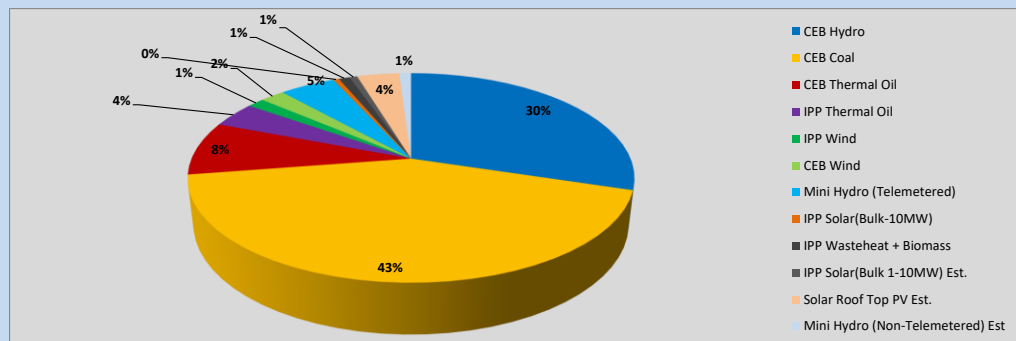


Table 01

	Generation (MWh)
CEB Hydro	13,430
CEB Coal	19,303
CEB Thermal Oil	3,742
IPP Thermal Oil	1,776
IPP Wind	663
CEB Wind	949
Mini Hydro (Telemetered)	2,177
IPP Solar (Bulk)	227
IPP Waste heat + Biomass	428
<b>Total Generation (Excluding estimated figures)</b>	<b>42,695</b>
* Estimated unserved energy	0
* Estimated Mini Hydro (Non telemetered)	464
* Estimated IPP Solar PV (Bulk 1-10MW)	304
* Estimated Solar Roof Top PV	1650
<b>Total Generation (Including estimated figures)</b>	<b>45,113</b>

\* Estimated figures of CEB generation report

Table 02

	Installed Capacity (MW)
CEB Hydro	1409
CEB Coal	810
CEB Thermal Oil	781
IPP Thermal Oil (West Coast, ACE Matara and ACE Embilipitiya)	387
IPP Wind	148
CEB Wind	100
Mini Hydro	422
IPP Waste heat + Biomass	50
IPP Solar	136
Rooftop Solar (Ordinary)	277
Rooftop Solar (LT Bulk)	263
Rooftop Solar (HT Bulk)	70

Data Source - Monthly Review Report [Aug-2023]

## 2. Cumulative Dispatch

Following data excludes the contribution from roof top solar, non telemetered solar and mini hydro plants

Table 03 - Current Month

Category	Dispatch (GWh)	
CEB Hydro	616	49.24%
CEB Coal	305	24.33%
CEB Thermal Oil	54	4.31%
IPP Thermal	46	3.65%
SPP Wind	16	1.30%
CEB Wind	21	1.71%
Mini Hydro *	115	9.22%
IPP Solar *	67	5.38%
IPP Waste heat + BMP	11	0.86%
<b>Total</b>	<b>1,252</b>	

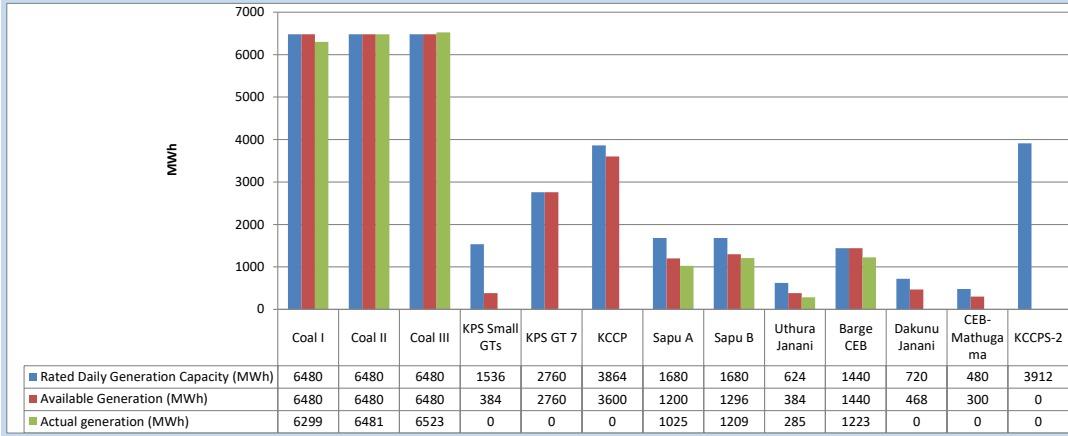
Table 04 - Current Year

Category	Dispatch (GWh)	
CEB Hydro	616	49.24%
CEB Coal	305	24.33%
CEB Thermal Oil	54	4.31%
IPP Thermal	46	3.65%
SPP Wind	16	1.30%
CEB Wind	21	1.71%
Mini Hydro *	115	9.22%
IPP Solar *	67	5.38%
IPP Waste heat	11	0.86%
<b>Total</b>	<b>1,252</b>	

\*Including estimated contribution from non telemetered plants

### 3. CEB owned Thermal Plant Dispatch

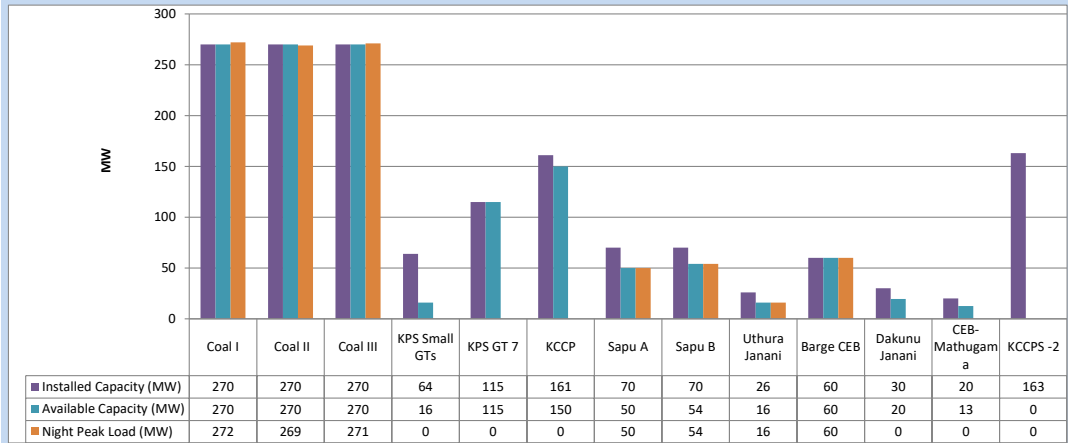
January 30, 2024



Available Generation is estimated based on plant availability at 6.00am on

January 31, 2024

### 4. CEB owned Thermal Plant Loading at the Night Peak

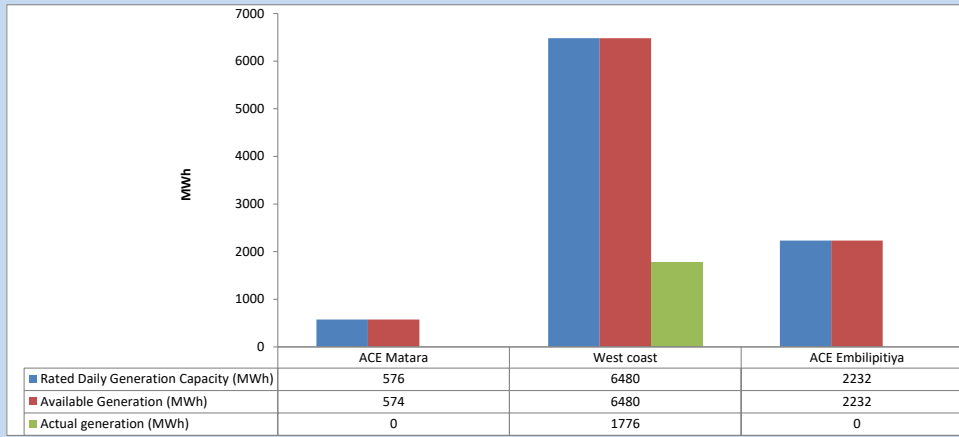


Plant availability is recorded at 6.00 am on

January 31, 2024

### 5. IPP owned Thermal Plant Dispatch

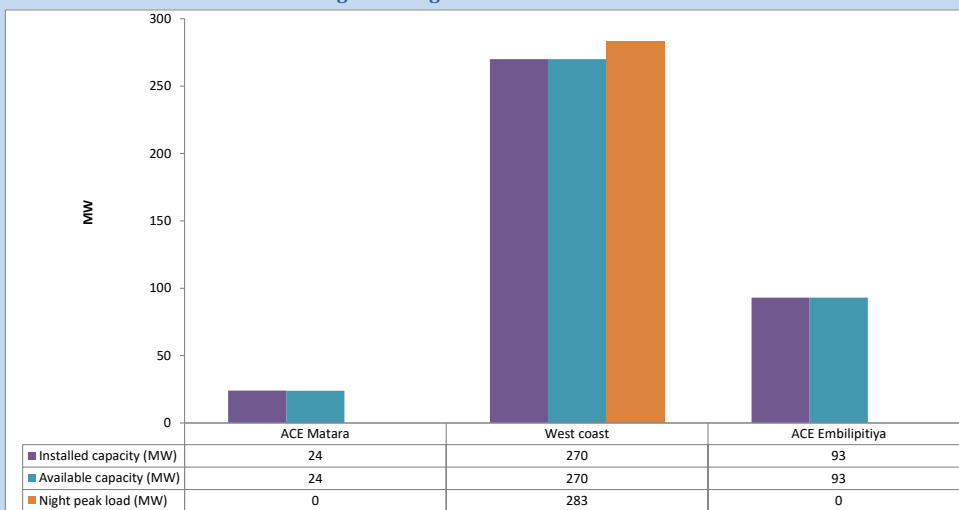
January 30, 2024



Available Generation is estimated based on plant availability at 6.00am on

January 31, 2024

### 6. IPP owned Thermal Plant Loading at the Night Peak

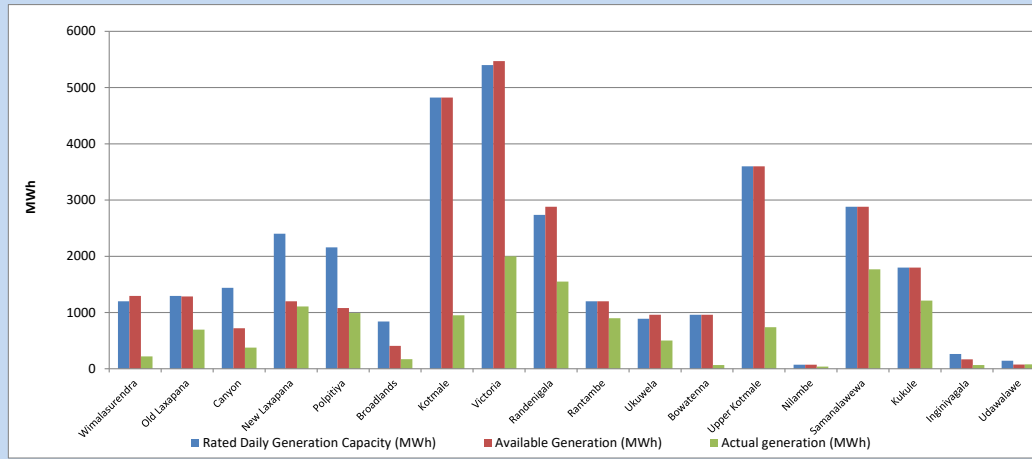


Plant availability is recorded at 6.00 am on

January 31, 2024

## 7. Major Hydro Plant Dispatch

January 30, 2024

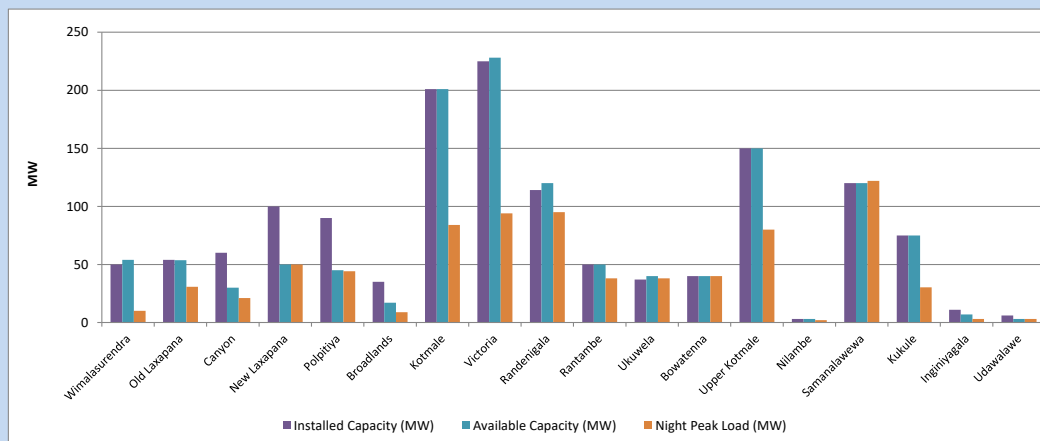


Available Generation is estimated based on plant availability at 6.00am on  
Broadlands power plant is operating in the Commissioning Stage

January 31, 2024

## 8. Major Hydro Plant Loading at Night Peak

January 30, 2024



Plant availability is recorded at 6.00 am on  
Broadlands power plant is operating in the Commissioning Stage

January 31, 2024

## 9. Summary of Major Plant performance

Table 05

Plant	Installed Capacity	Plant Availability	Night peak Load	Plant Dispatch
	(MW)	(MW)	(MW)	(MWh)
Wimalasurendra	50	54	10	220
Old Laxapana	54	54	31	697
Canyon	60	30	21	377
New Laxapana	100	50	50	1,108
Polpitiya	90	45	44	990
Broadlands	35	17	9	171
Kotmale	201	201	84	950
Victoria	225	228	94	1,998
Randenigala	114	120	95	1,551
Rantambe	50	50	38	899
Ukuwela	37	40	38	502
Bowatenna	40	40	40	67
Upper Kotmale	150	150	80	739
Nilambe	3	3	2	37
Samanalawewa	120	120	122	1,767
Kukule	75	75	30	1,212
Inginiyagala	11	7	3	67
Udawalawe	6	3	3	78
Puttalam Coal I	270	270	272	6,299
Puttalam Coal II	270	270	269	6,481
Puttalam Coal III	270	270	271	6,523
KPS Small GTs	64	16	0	0
KPS GT 7	115	115	0	0
KCCP	161	150	0	0
Sapugaskanda A	70	50	50	1,025
Sapugaskanda B	70	54	54	1,209
Uthura Janani	26	16	16	285
Barge CEB	60	60	60	1,223
CEB-Hambantota	30	20	0	0
CEB-Mathugama	20	13	0	0
ACE Matara	24	24	0	0
Asia Power	50	0	0	0
KCCPS -2	163	0	0	0
West Coast	270	270	283	1,776
Nothern Power	36	0	0	0
ACE Embilipitiya	93	93	0	0
Total	3,483	2,977	2,145	42,695

Plant availability is the availability recorded at 6 am on

January 31, 2024

### 10. Contribution to the Night Peak in MW

January 30, 2024

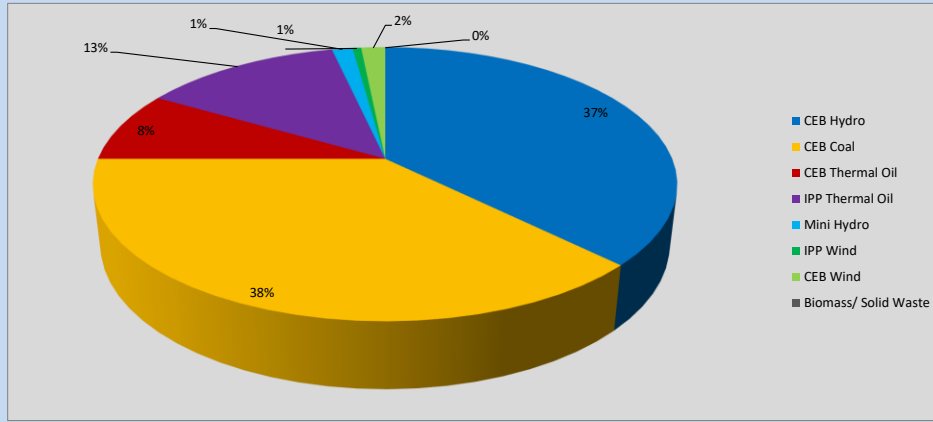


Table 06

CEB Hydro	805	MW
CEB Coal	812	MW
CEB Thermal Oil	180	MW
IPP Thermal Oil	283	MW
Mini Hydro (Telemetered)	30	MW
IPP Wind	12.2	MW
CEB Wind	34.3	MW
Biomass/ Solid Waste	0	MW

### Recorded Peak Demand Data

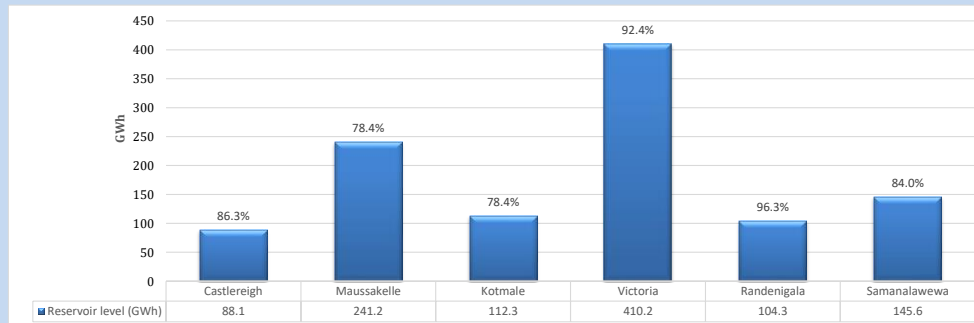
Table 07

Night Peak*	2,156	MW
Day Peak Maximum Demand	2,045	MW
Day Peak Minimum Demand	809	MW
Off Peak Minimum Demand	1,317	MW

Above figures are excluding contribution from roof top solar, non telemetered solar and mini hydro plants

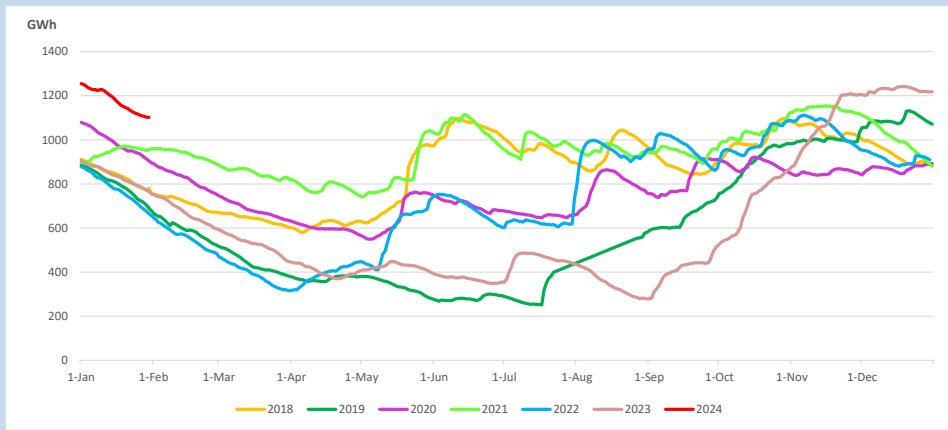
### Reservoir Levels -

as at 06.00 Hr on January 31, 2024

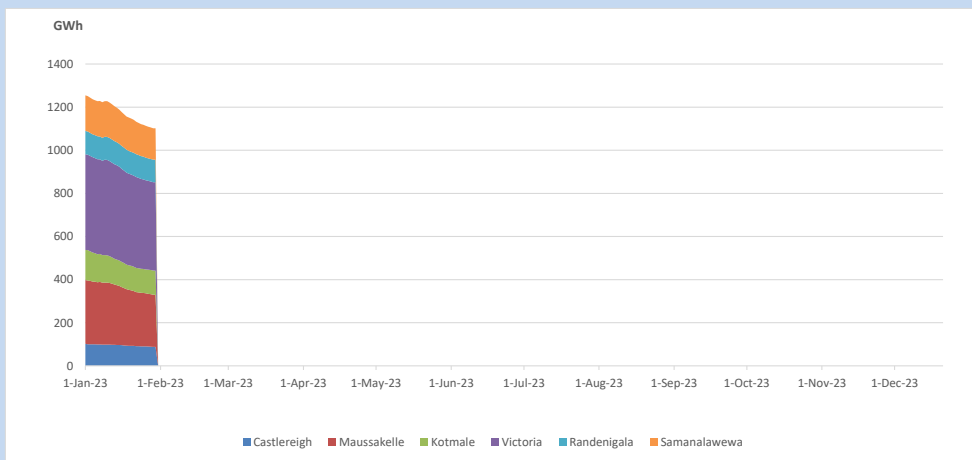


Total Reservoir Level 1101.7 GWh  
% of Total capacity 86.2%

### 11. Comparison of Total Reservoir Storage Levels with Past Years

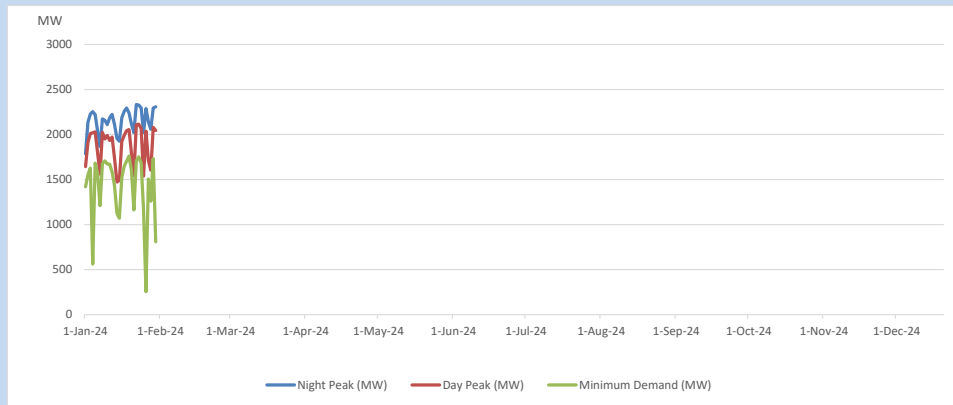


### 12. Variation of Major Hydro Reservoir Levels in the current year (GWh)





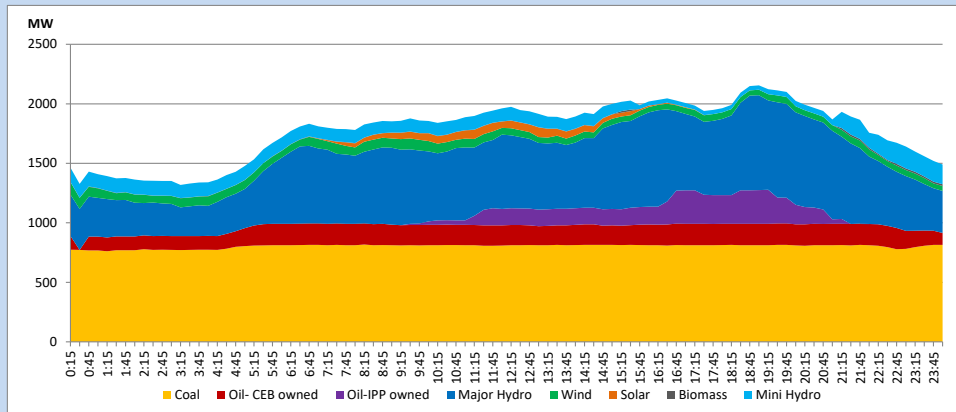
### 13. Variation of Demand during the current year



The above figures are excluding contribution from roof top solar, non telemetered solar and mini hydro plants

### 14. Daily Load Curve

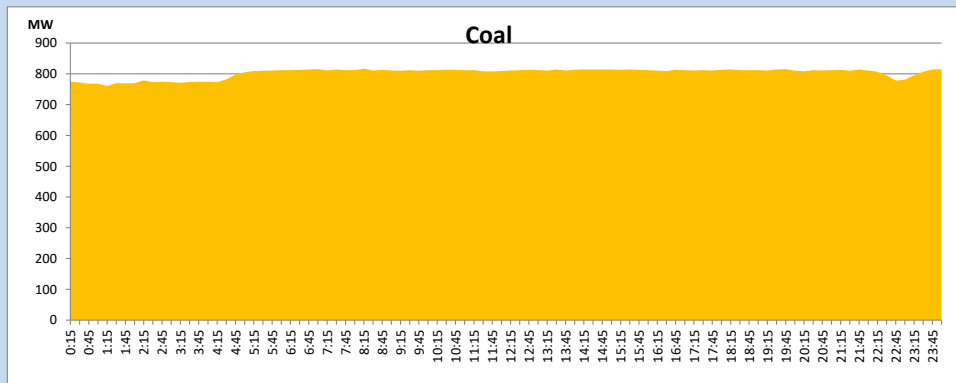
January 30, 2024



Solar and wind data is based on Telemetered Power Stations only

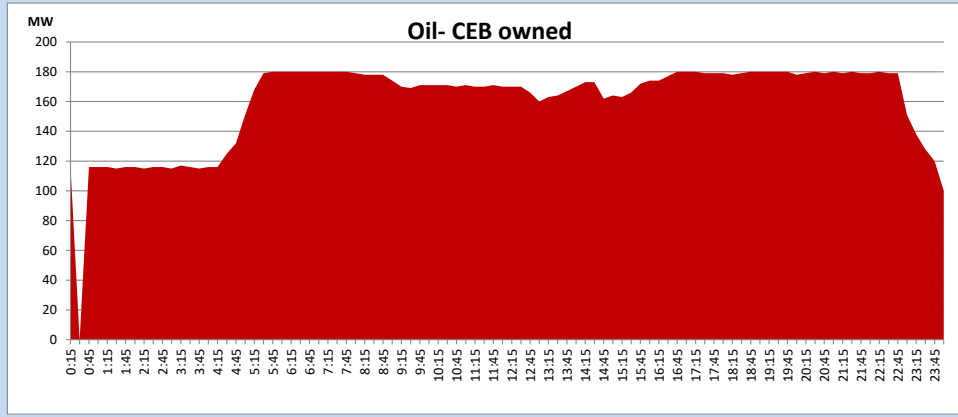
### Coal Generation during

January 30, 2024



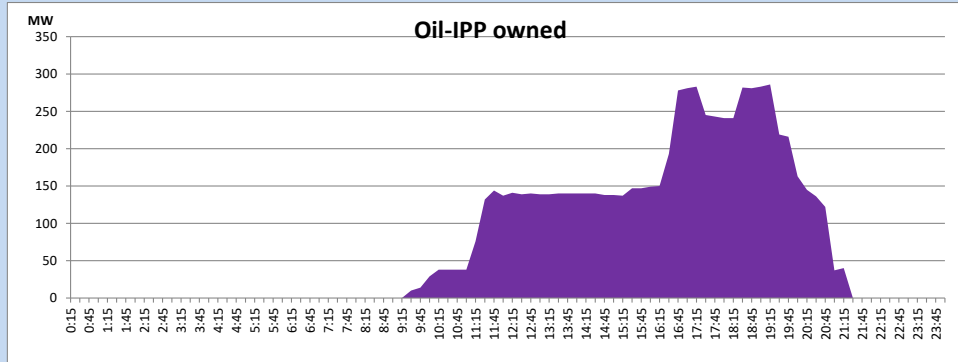
CEB Oil Plant Generation during

January 30, 2024



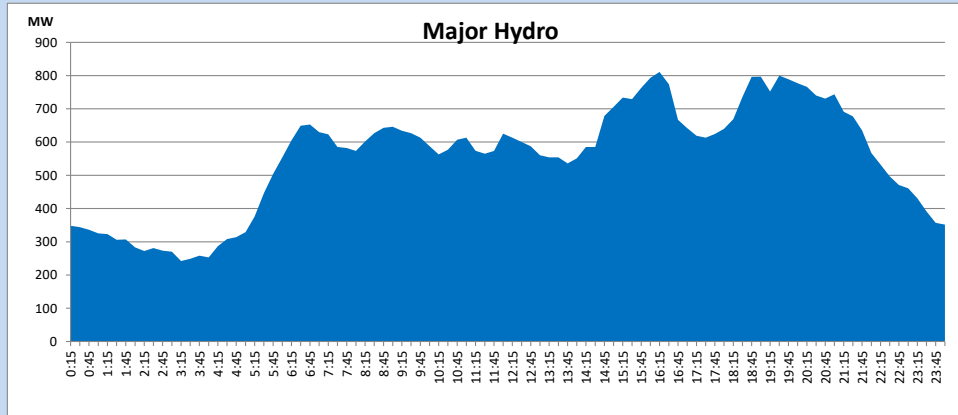
IPP Oil Plant Generation during

January 30, 2024



Major Hydro Generation during

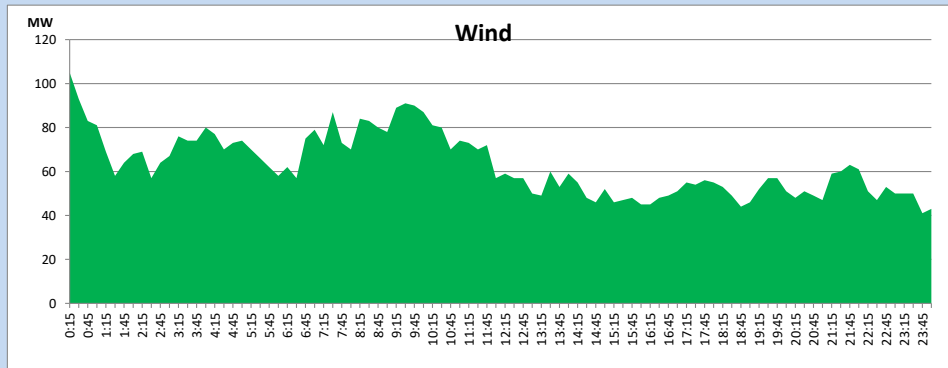
January 30, 2024



## Wind Generation during

January 30, 2024

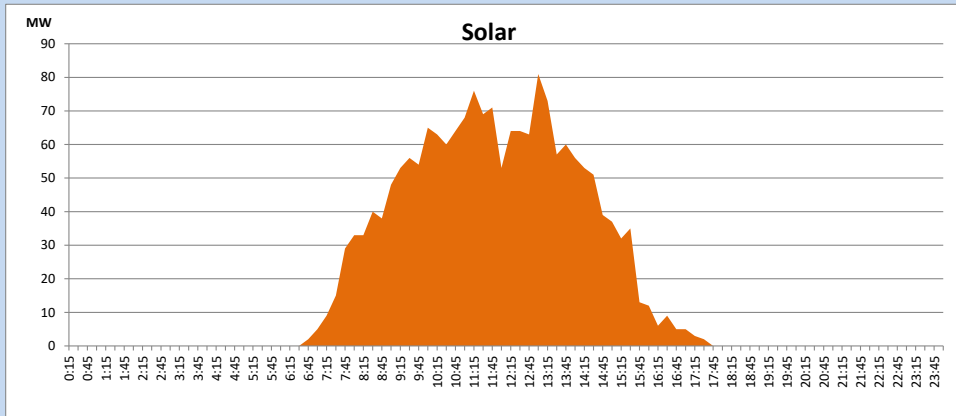
Based on Telemetered Power Stations only



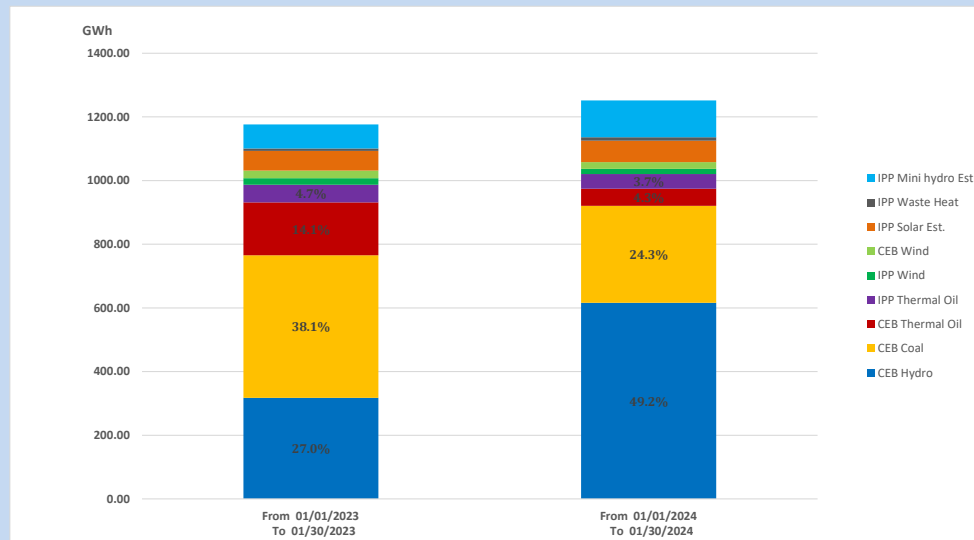
## Solar Generation during

January 30, 2024

Based on Telemetered Power Stations only



## 15. Cumulative Dispatch Comparison with Last Year



### Cumulative dispatch

\* From 01/01/2023 To 01/30/2023  
From 01/01/2024 To 01/30/2024

1176 GWh  
1252 GWh

The above figures are including contribution from roof top solar, non telemetered solar and mini hydro plants)

Thermal Plant Fuel types

Table 08

Power Station	Primary Fuel
CEB Thermal	
Sapugaskanda 1	Heavy Fuel
Sapugaskanda 2	Heavy Fuel
Kelanitissa Small Gas Turbines	Auto Diesel
GT 7 - Kelanitissa	Auto Diesel
Kelanitissa CCY	Naphtha or Diesel
Lakvijaya 1	Coal
Lakvijaya 2	Coal
Lakvijaya 3	Coal
Uthuru Janani	Heavy Fuel
Barge CEB	Heavy Fuel
KCCPS -2	Auto Diesel

Power Station	Primary Fuel
Private Thermal	
West Coast	Auto Diesel / Heavy Fuel
ACE Matara	Heavy Fuel
ACE Embilipitiya	Heavy Fuel

Major Incidents reported during the day

January 30, 2024

- 1) Kosgama – Kolonnawa 132kV cct which was manually switched off on 29.01.2024, was normalized at 08:52hrs
- 2) New Polpitiya - Padukka 220kV cct O2 tripped and A/R from both ends at 19:42hrs due to the operation of distance protection.
- 3) Broadlands - Seethawaka 132kV cct tripped and A/R from both ends at 20:23hrs due to the operation of distance protection
- 4) Kukule pond spilling started at 00:15hrs (31.01.2024) and continues to the present hour