

# Generation and Reservoirs Statistics

February 26, 2024



PUBLIC UTILITIES COMMISSION OF SRI LANKA

## 1. Daily Generation Mix in MWh

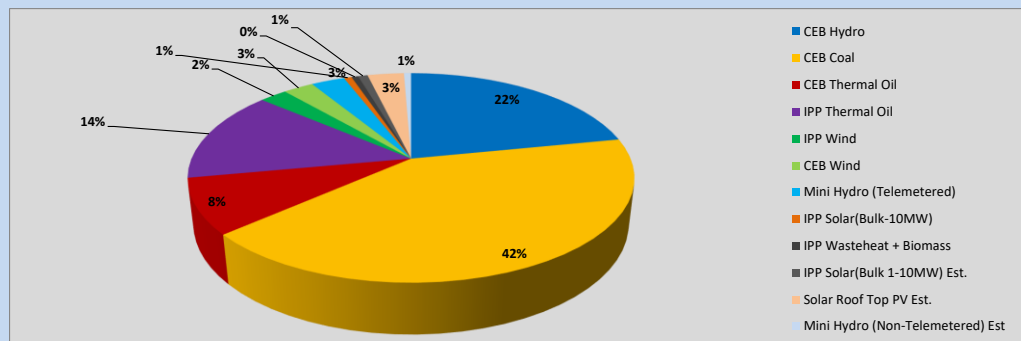


Table 01

	Generation (MWh)
CEB Hydro	10,211
CEB Coal	19,451
CEB Thermal Oil	3,993
IPP Thermal Oil	6,612
IPP Wind	1,111
CEB Wind	1,229
Mini Hydro (Telemetered)	1,358
IPP Solar (Bulk)	311
IPP Waste heat + Biomass	273
<b>Total Generation (Excluding estimated figures)</b>	<b>44,549</b>
* Estimated unserved energy	0
* Estimated Mini Hydro (Non telemetered)	289
* Estimated IPP Solar PV (Bulk 1-10MW)	389
* Estimated Solar Roof Top PV	1470
<b>Total Generation (Including estimated figures)</b>	<b>46,697</b>

\* Estimated figures of CEB generation report

Table 02

	Installed Capacity (MW)
CEB Hydro	1644
CEB Coal	810
CEB Thermal Oil	773.1
IPP Thermal Oil (West Coast, ACE Matara and ACE Embilipitiya)	386.9
IPP Wind	163
CEB Wind	100
Mini Hydro	422
IPP Waste heat + Biomass	54
IPP Solar	137
Rooftop Solar (Ordinary)	293
Rooftop Solar (LT Bulk)	272
Rooftop Solar (HT Bulk)	74

Data Source - Monthly Review Report [Nov-2023]

## 2. Cumulative Dispatch

Following data excludes the contribution from roof top solar, non telemetered solar and mini hydro plants

Table 03 - Current Month

Category	Dispatch (GWh)	
CEB Hydro	275	24.25%
CEB Coal	498	43.91%
CEB Thermal Oil	87	7.67%
IPP Thermal	102	9.01%
SPP Wind	17	1.48%
CEB Wind	20	1.74%
Mini Hydro *	68	5.98%
IPP Solar *	57	4.99%
IPP Waste heat + BMP	11	0.93%
<b>Total</b>	<b>1,133</b>	

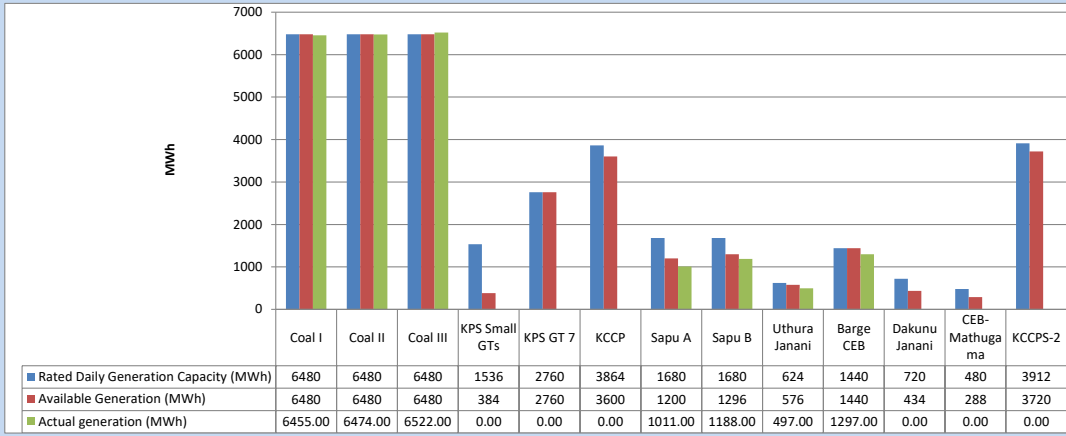
Table 04 - Current Year

Category	Dispatch (GWh)	
CEB Hydro	906	37.30%
CEB Coal	821	33.82%
CEB Thermal Oil	144	5.95%
IPP Thermal	148	6.09%
SPP Wind	33	1.37%
CEB Wind	42	1.71%
Mini Hydro *	187	7.69%
IPP Solar *	126	5.19%
IPP Waste heat	22	0.89%
<b>Total</b>	<b>2,429</b>	

\*Including estimated contribution from non telemetered plants

### 3. CEB owned Thermal Plant Dispatch

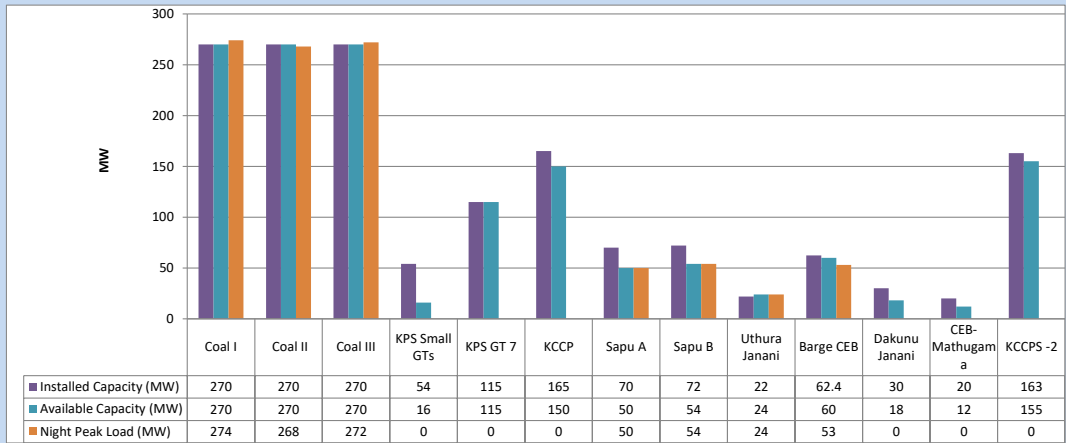
February 26, 2024



Available Generation is estimated based on plant availability at 6.00am on

February 27, 2024

### 4. CEB owned Thermal Plant Loading at the Night Peak

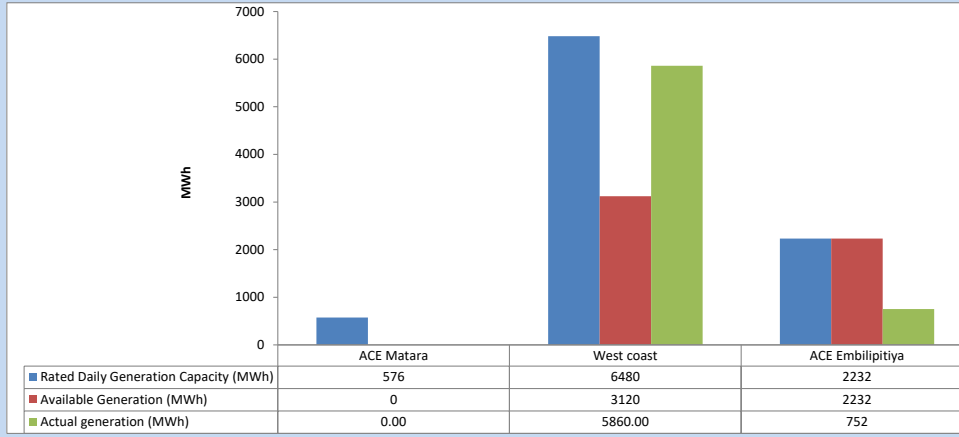


Plant availability is recorded at 6.00 am on

February 27, 2024

### 5. IPP owned Thermal Plant Dispatch

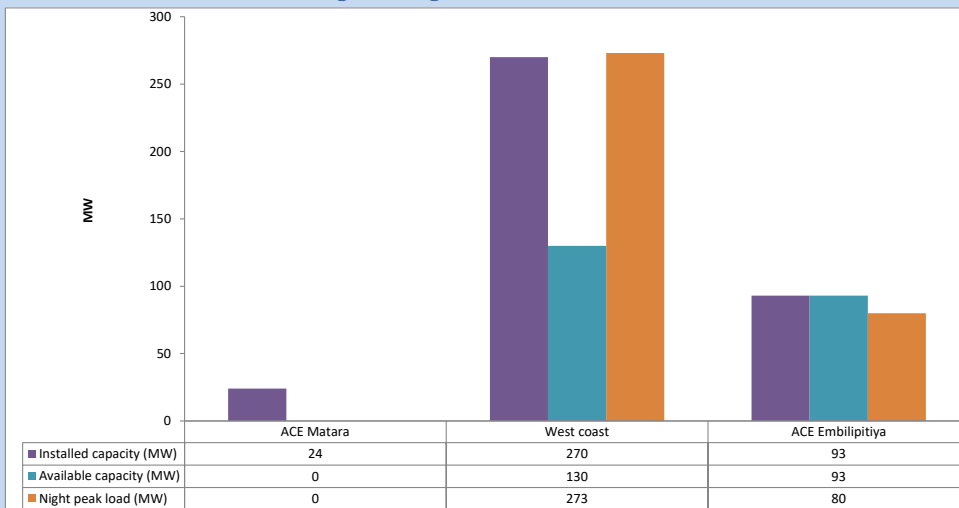
February 26, 2024



Available Generation is estimated based on plant availability at 6.00am on

February 27, 2024

### 6. IPP owned Thermal Plant Loading at the Night Peak

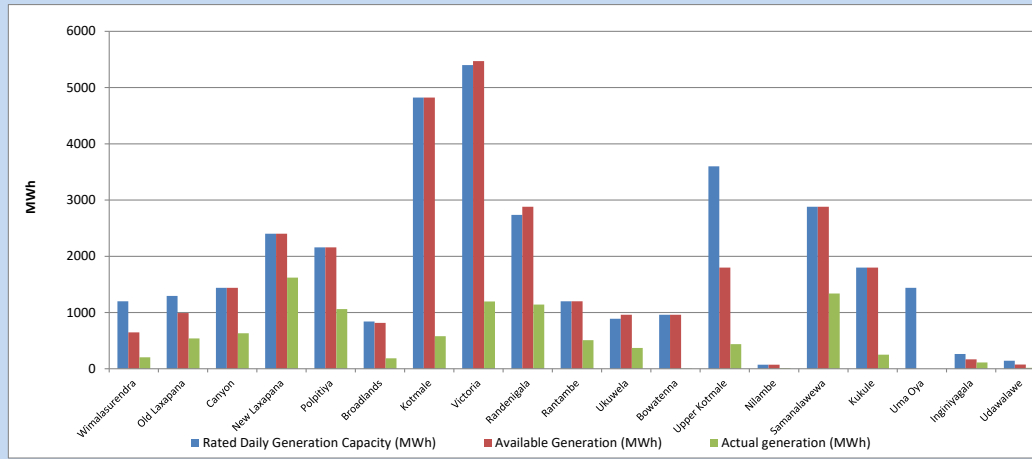


Plant availability is recorded at 6.00 am on

February 27, 2024

## 7. Major Hydro Plant Dispatch

February 26, 2024

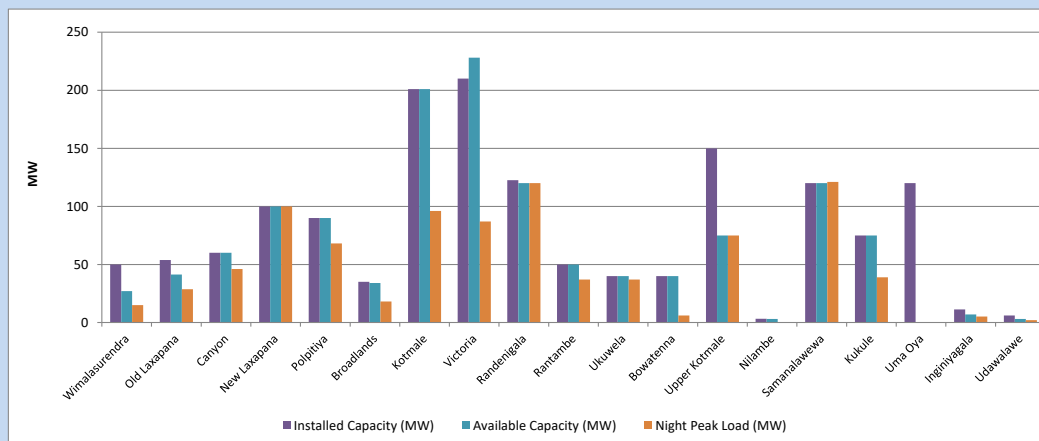


Available Generation is estimated based on plant availability at 6.00am on  
Broadlands power plant is operating in the Commissioning Stage

February 27, 2024

## 8. Major Hydro Plant Loading at Night Peak

February 26, 2024



Plant availability is recorded at 6.00 am on  
Broadlands power plant is operating in the Commissioning Stage

February 27, 2024

## 9. Summary of Major Plant performance

Table 05

Plant	Maximum Available Total Capacity	Plant Availability	Night peak Load	Plant Dispatch
	(MW)	(MW)	(MW)	(MWh)
Wimalasurendra	50	27	15	205
Old Laxapana	54	41	29	540
Canyon	60	60	46	632
New Laxapana	100	100	100	1,620
Polpitiya	90	90	68	1,060
Broadlands	35	34	18	187
Kotmale	201	201	96	580
Victoria	210	228	87	1,198
Randenigala	123	120	120	1,140
Rantambe	50	50	37	507
Ukuwela	40	40	37	370
Bowatenna	40	40	6	4
Upper Kotmale	150	75	75	439
Nilambe	3	3	0	12
Samanalawewa	120	120	121	1,337
Kukule	75	75	39	251
Uma Oya (Testing )	120	0	0	0
Inginiyagala	11	7	5	113
Udawalawe	6	3	2	17
Puttalam Coal I	270	270	274	6,455
Puttalam Coal II	270	270	268	6,474
Puttalam Coal III	270	270	272	6,522
KPS Small GTs	54	16	0	0
KPS GT 7	115	115	0	0
KCCP	165	150	0	0
Sapugaskanda A	70	50	50	1,011
Sapugaskanda B	72	54	54	1,188
Uthura Janani	22	24	24	497
Barge CEB	62	60	53	1,297
CEB-Hambantota	30	18	0	0
CEB-Mathugama	20	12	0	0
ACE Matara	24	0	0	0
Asia Power	50	0	0	0
KCCPS -2	163	155	0	0
West Coast	270	130	273	5,860
Nothern Power	36	0	0	0
ACE Embilipitiya	93	93	80	752
<b>Total</b>	<b>3,594</b>	<b>3,002</b>	<b>2,379</b>	<b>44,550</b>

Note-

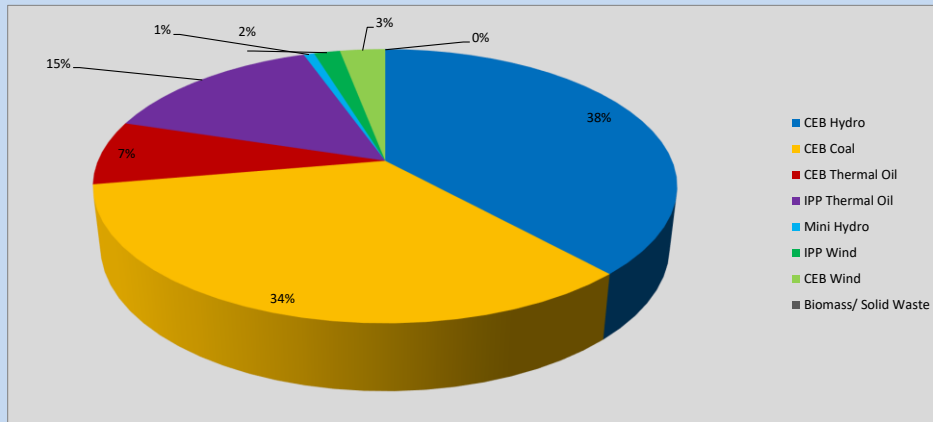
Plant availability is the availability recorded at 6 am on

February 27, 2024

Installed Capacity is sourced from CEB Annual Report- 2022

### 10. Contribution to the Night Peak in MW

February 26, 2024



**Table 06**

CEB Hydro	914	MW
CEB Coal	814	MW
CEB Thermal Oil	181	MW
IPP Thermal Oil	353	MW
Mini Hydro (Telemetered)	17	MW
IPP Wind	41.3	MW
CEB Wind	71.7	MW
Biomass/ Solid Waste	0	MW

### Recorded Peak Demand Data

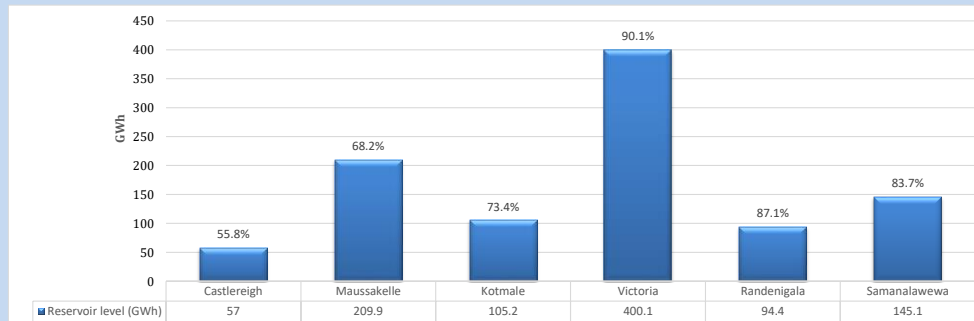
**Table 07**

Night Peak*	2,392	MW
Day Peak Maximum Demand	2,262	MW
Day Peak Minimum Demand	1,675	MW
Off Peak Minimum Demand	1,343	MW

Above figures are excluding contribution from roof top solar, non telemetered solar and mini hydro plants

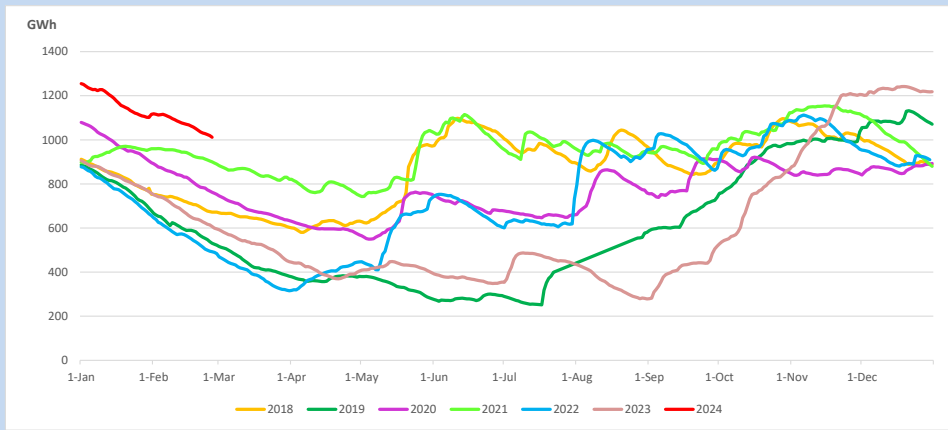
### Reservoir Levels -

as at 06.00 Hr on February 27, 2024

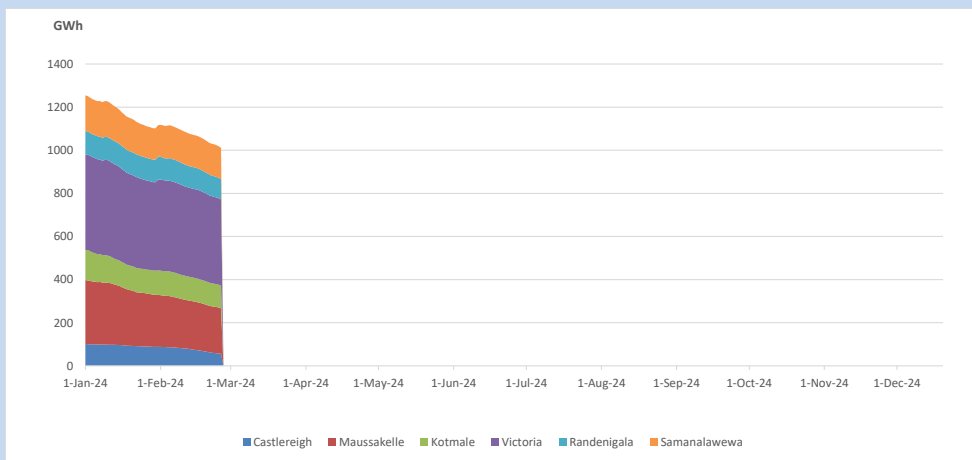


Total Reservoir Level 1011.7 GWh  
% of Total capacity 79.1%

### 11. Comparison of Total Reservoir Storage Levels with Past Years

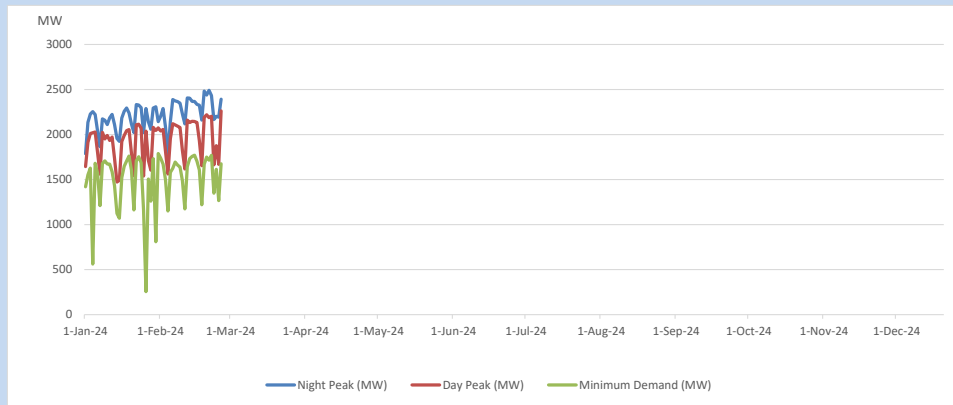


### 12. Variation of Major Hydro Reservoir Levels in the current year (GWh)





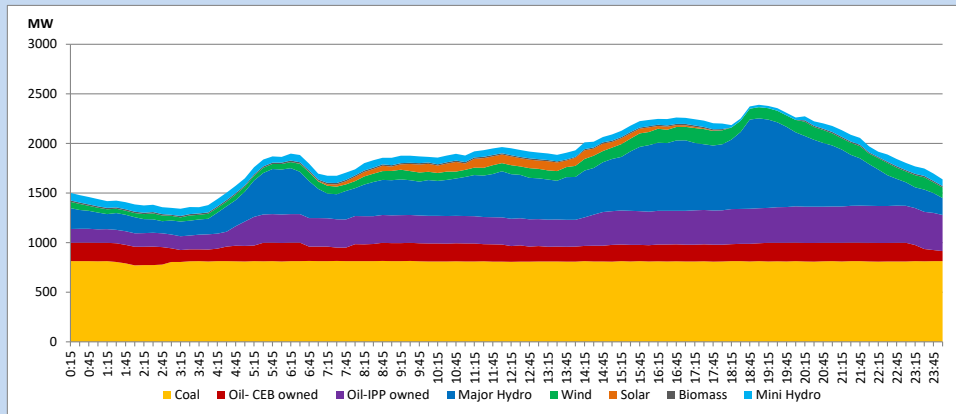
### 13. Variation of Demand during the current year



The above figures are excluding contribution from roof top solar, non telemetered solar and mini hydro plants

### 14. Daily Load Curve

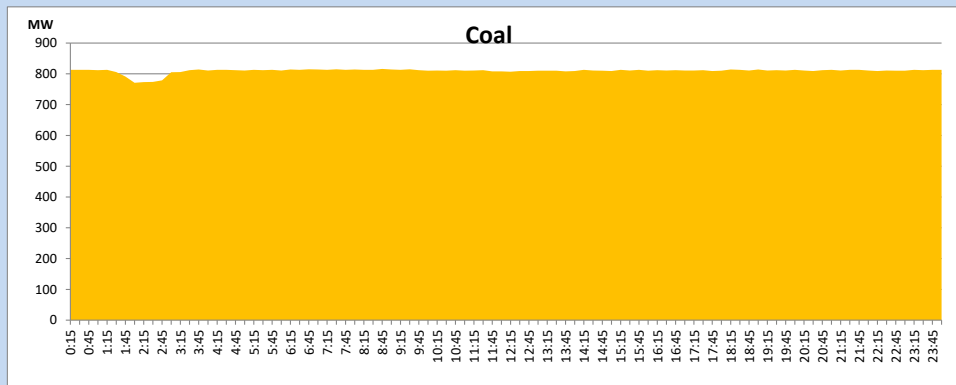
February 26, 2024



Solar and wind data is based on Telemetered Power Stations only

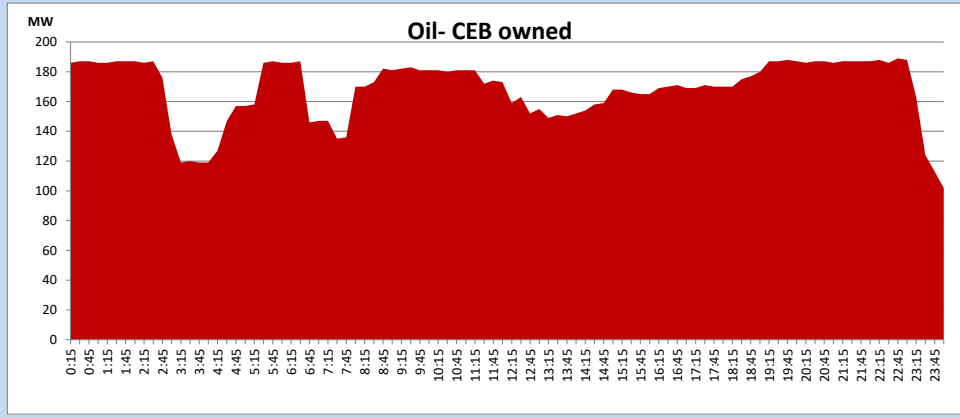
### Coal Generation during

February 26, 2024



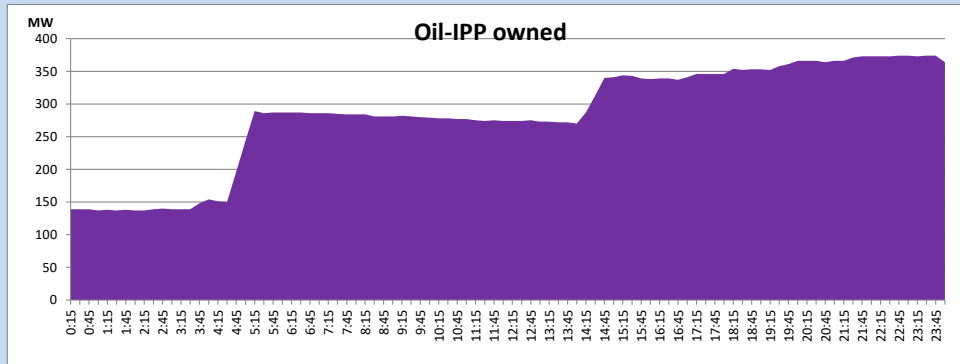
CEB Oil Plant Generation during

February 26, 2024



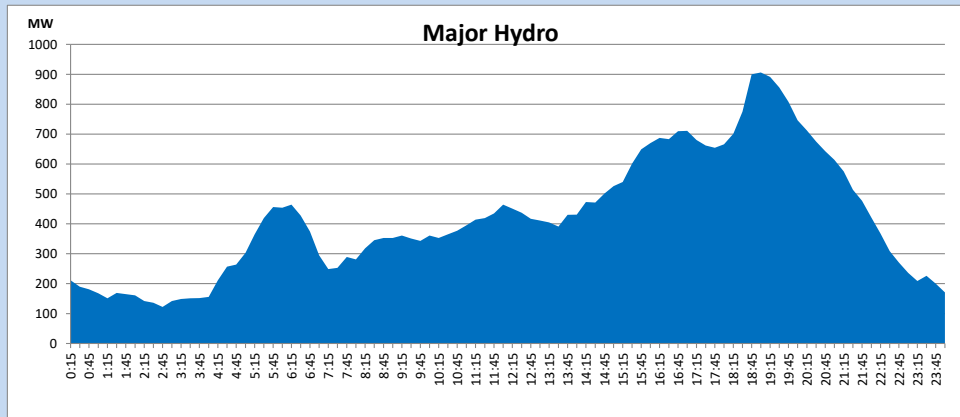
IPP Oil Plant Generation during

February 26, 2024



Major Hydro Generation during

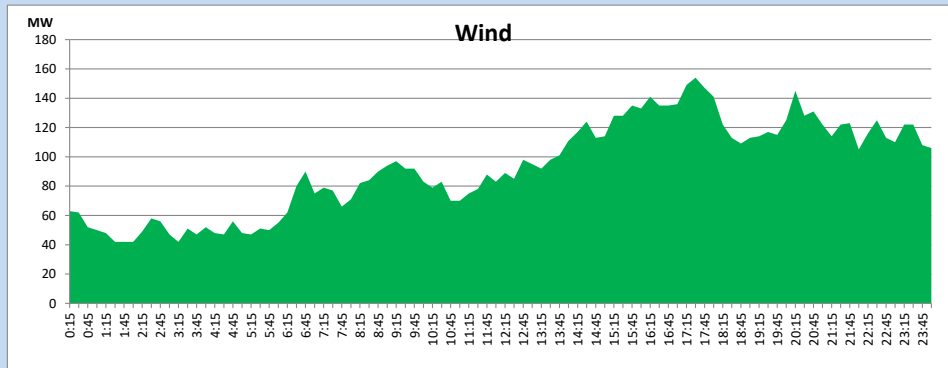
February 26, 2024



## Wind Generation during

February 26, 2024

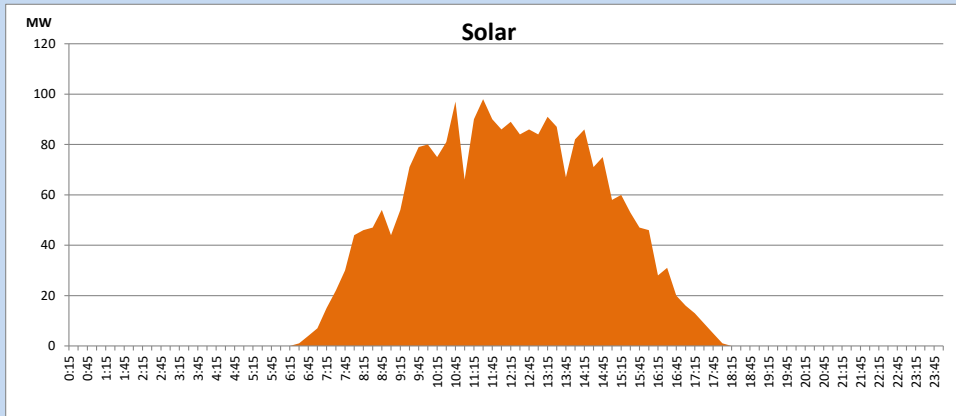
Based on Telemetered Power Stations only



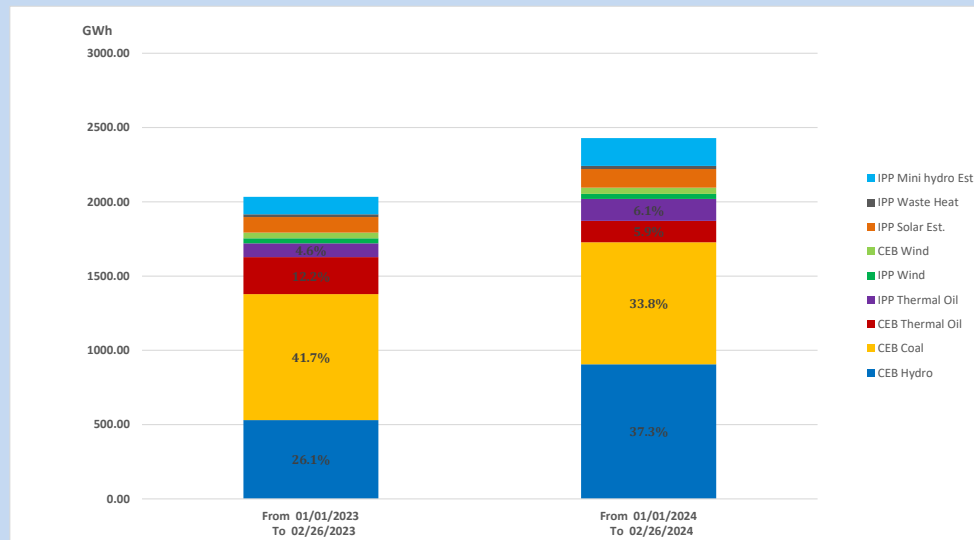
## Solar Generation during

February 26, 2024

Based on Telemetered Power Stations only



## 15. Cumulative Dispatch Comparison with Last Year



### Cumulative dispatch

From 01/01/2023 To 02/26/2023

2034 GWh

From 01/01/2024 To 02/26/2024

2429 GWh

The above figures are including contribution from roof top solar, non telemetered solar and mini hydro plants)

Unserviced energy due to power cuts has been excluded in 2023

Thermal Plant Fuel types

Table 08

Power Station	Primary Fuel
CEB Thermal	
Sapugaskanda 1	Heavy Fuel
Sapugaskanda 2	Heavy Fuel
Kelanitissa Small Gas Turbines	Auto Diesel
GT 7 - Kelanitissa	Auto Diesel
Kelanitissa CCY	Naphtha or Diesel
Lakvijaya 1	Coal
Lakvijaya 2	Coal
Lakvijaya 3	Coal
Uthuru Janani	Heavy Fuel
Barge CEB	Heavy Fuel
KCCPS -2	Auto Diesel

Power Station	Primary Fuel
Private Thermal	
West Coast	Auto Diesel / Heavy Fuel
ACE Matara	Heavy Fuel
ACE Embilipitiya	Heavy Fuel

Major Incidents reported during the day

February 26, 2024

- 1) Embilipitiya - Samanalawewa 132kV cct 02 tripped from Samanalawewa end and tripped and A/R from Embilipitiya end at 12:09hrs due to the operation of Distance protection. Embilipitiya - Samanalawewa cct 02 restored at 13:09hrs.
- 2) WCP GT 02 made a forced shutdown at 04:51hrs (27.02.24) due to a bleed valve opening issue and WCP availability limited to 130MW from 5:00hrs (27.02.24). WCP GT 02 is yet to resume generation.