

Generation and Reservoirs Statistics

February 25, 2024



PUBLIC UTILITIES COMMISSION OF SRI LANKA

1. Daily Generation Mix in MWh

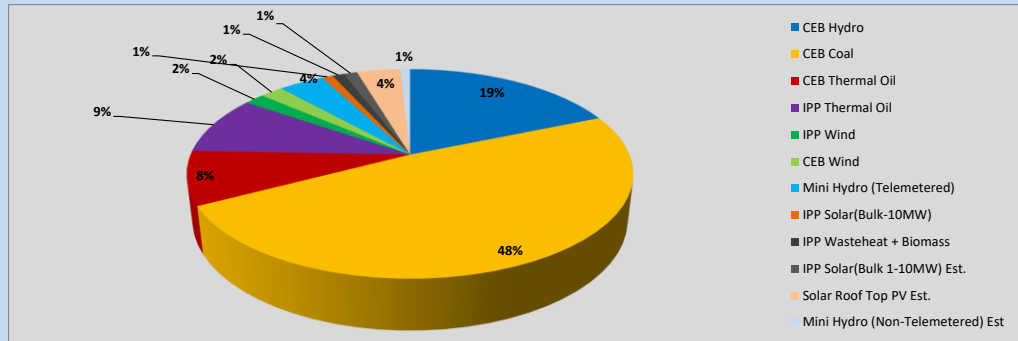


Table 01

	Generation (MWh)
CEB Hydro	7,290
CEB Coal	18,946
CEB Thermal Oil	3,224
IPP Thermal Oil	3,516
IPP Wind	680
CEB Wind	780
Mini Hydro (Telemetered)	1,532
IPP Solar (Bulk)	371
IPP Waste heat + Biomass	393
Total Generation (Excluding estimated figures)	36,732
* Estimated unserved energy	0
* Estimated Mini Hydro (Non telemetered)	327
* Estimated IPP Solar PV (Bulk 1-10MW)	454
* Estimated Solar Roof Top PV	1,470
Total Generation (Including estimated figures)	38,983

* Estimated figures of CEB generation report

Table 02

	Installed Capacity (MW)
CEB Hydro	1644
CEB Coal	810
CEB Thermal Oil	773.1
IPP Thermal Oil (West Coast, ACE Matara and ACE Embilipitiya)	386.9
IPP Wind	163
CEB Wind	100
Mini Hydro	422
IPP Waste heat + Biomass	54
IPP Solar	137
Rooftop Solar (Ordinary)	293
Rooftop Solar (LT Bulk)	272
Rooftop Solar (HT Bulk)	74

Data Source - Monthly Review Report [Nov-2023]

2. Cumulative Dispatch

Following data excludes the contribution from roof top solar, non telemetered solar and mini hydro plants

Table 03 - Current Month

Category	Dispatch (GWh)	
CEB Hydro	265	24.35%
CEB Coal	478	44.01%
CEB Thermal Oil	83	7.64%
IPP Thermal	96	8.79%
SPP Wind	16	1.45%
CEB Wind	18	1.70%
Mini Hydro *	66	6.08%
IPP Solar *	54	5.01%
IPP Waste heat + BMP	10	0.94%
Total	1,086	

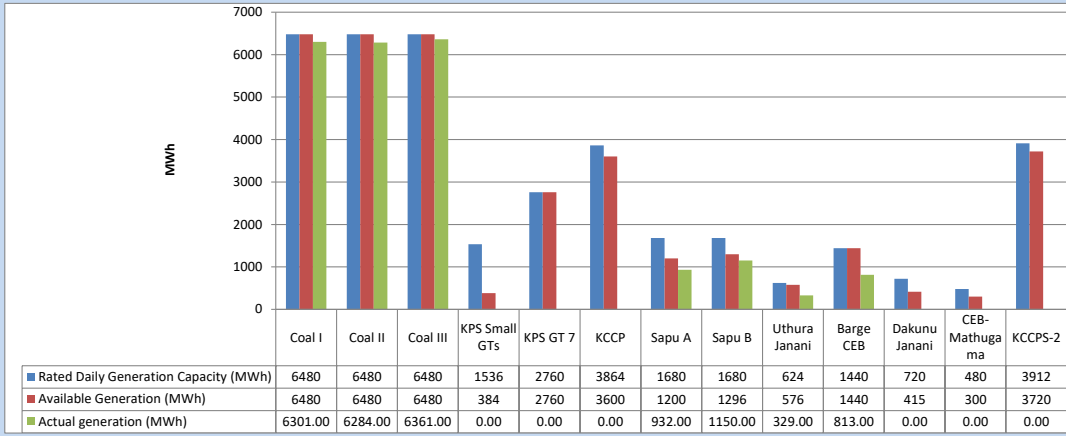
Table 04 - Current Year

Category	Dispatch (GWh)	
CEB Hydro	896	37.60%
CEB Coal	802	33.66%
CEB Thermal Oil	140	5.89%
IPP Thermal	141	5.93%
SPP Wind	32	1.35%
CEB Wind	40	1.70%
Mini Hydro *	185	7.77%
IPP Solar *	124	5.20%
IPP Waste heat	21	0.89%
Total	2,382	

*Including estimated contribution from non telemetered plants

3. CEB owned Thermal Plant Dispatch

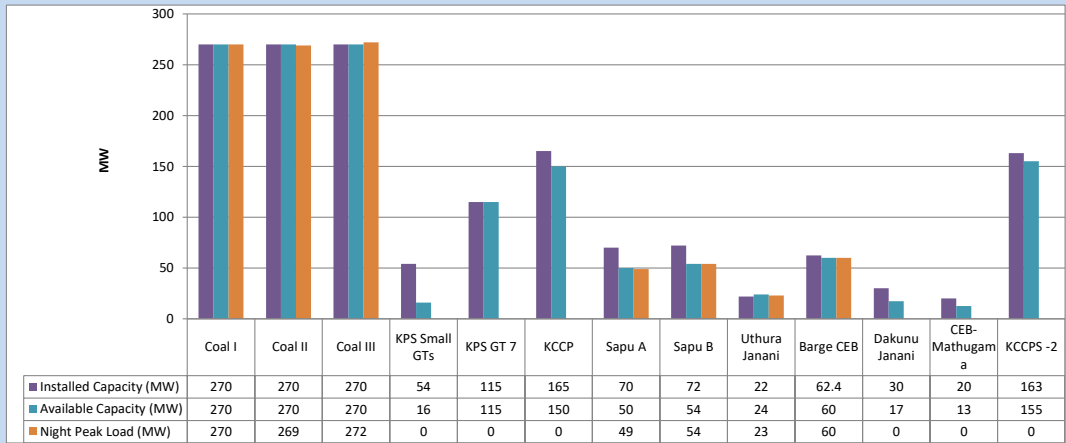
February 25, 2024



Available Generation is estimated based on plant availability at 6.00am on

February 26, 2024

4. CEB owned Thermal Plant Loading at the Night Peak

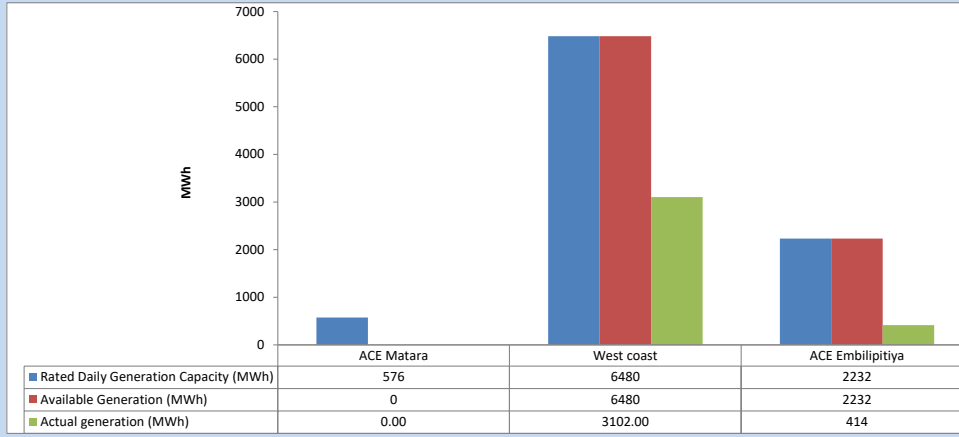


Plant availability is recorded at 6.00 am on

February 26, 2024

5. IPP owned Thermal Plant Dispatch

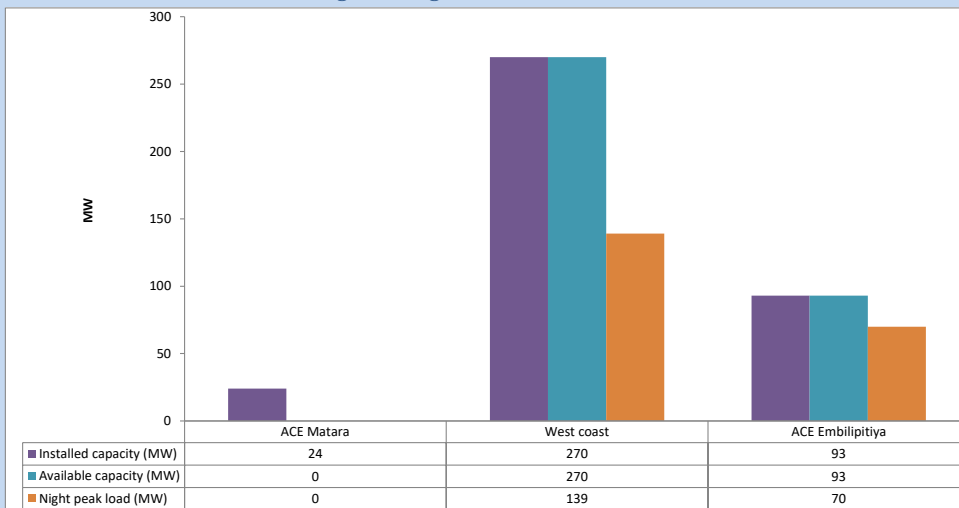
February 25, 2024



Available Generation is estimated based on plant availability at 6.00am on

February 26, 2024

6. IPP owned Thermal Plant Loading at the Night Peak

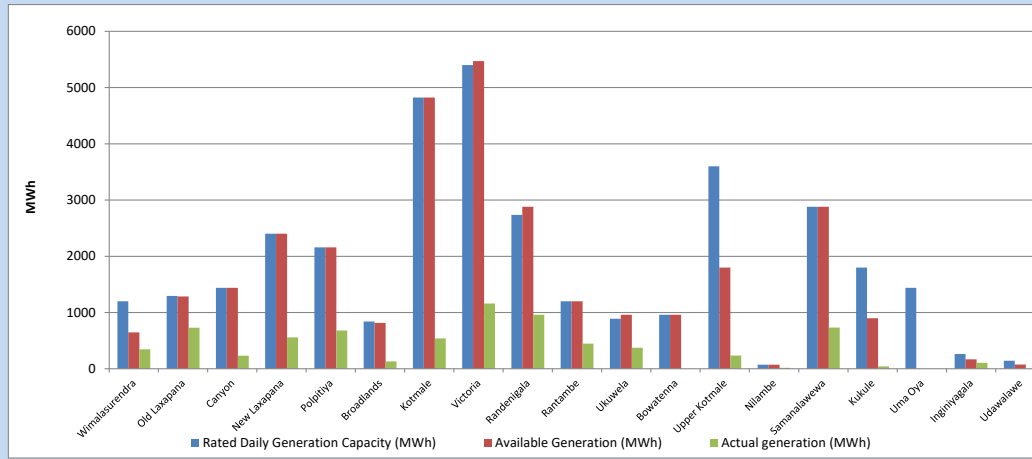


Plant availability is recorded at 6.00 am on

February 26, 2024

7. Major Hydro Plant Dispatch

February 25, 2024

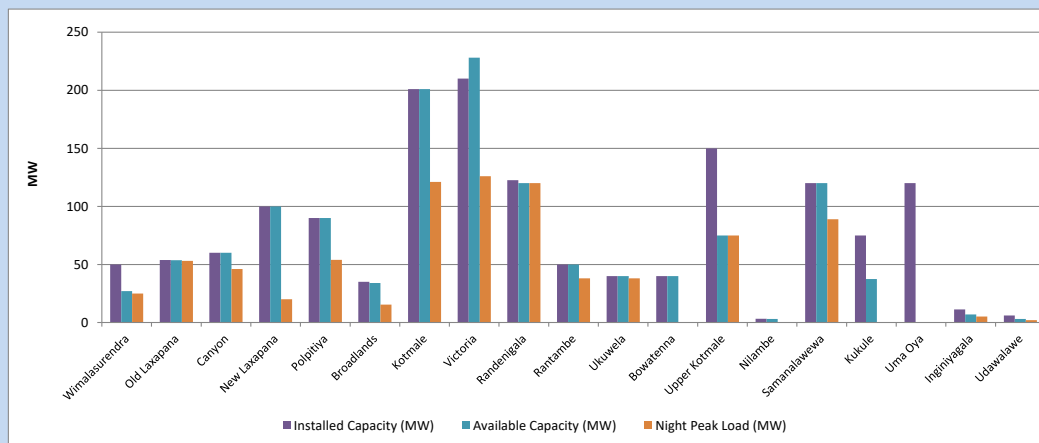


Available Generation is estimated based on plant availability at 6.00am on
Broadlands power plant is operating in the Commissioning Stage

February 26, 2024

8. Major Hydro Plant Loading at Night Peak

February 25, 2024



Plant availability is recorded at 6.00 am on
Broadlands power plant is operating in the Commissioning Stage

February 26, 2024

9. Summary of Major Plant performance

Table 05

Plant	Maximum Available Total Capacity	Plant Availability	Night peak Load	Plant Dispatch
	(MW)	(MW)	(MW)	(MWh)
Wimalasurendra	50	27	25	346
Old Laxapana	54	54	53	730
Canyon	60	60	46	231
New Laxapana	100	100	20	558
Polpitiya	90	90	54	680
Broadlands	35	34	15	132
Kotmale	201	201	121	540
Victoria	210	228	126	1,160
Randenigala	123	120	120	960
Rantambe	50	50	38	448
Ukuwela	40	40	38	373
Bowatenna	40	40	0	0
Upper Kotmale	150	75	75	234
Nilambe	3	3	0	18
Samanalawewa	120	120	89	734
Kukule	75	38	0	40
Uma Oya (Testing)	120	0	0	0
Inginiyagala	11	7	5	106
Udawalawe	6	3	2	0
Puttalam Coal I	270	270	270	6,301
Puttalam Coal II	270	270	269	6,284
Puttalam Coal III	270	270	272	6,361
KPS Small GTs	54	16	0	0
KPS GT 7	115	115	0	0
KCCP	165	150	0	0
Sapugaskanda A	70	50	49	932
Sapugaskanda B	72	54	54	1,150
Uthura Janani	22	24	23	329
Barge CEB	62	60	60	813
CEB-Hambantota	30	17	0	0
CEB-Mathugama	20	13	0	0
ACE Matara	24	0	0	0
Asia Power	50	0	0	0
KCCPS -2	163	155	0	0
West Coast	270	270	139	3,102
Nothern Power	36	0	0	0
ACE Embilipitiya	93	93	70	414
Total	3,594	3,116	2,180	36,732

Note-

Plant availability is the availability recorded at 6 am on

February 26, 2024

Installed Capacity is sourced from CEB Annual Report- 2022

10. Contribution to the Night Peak in MW

February 25, 2024

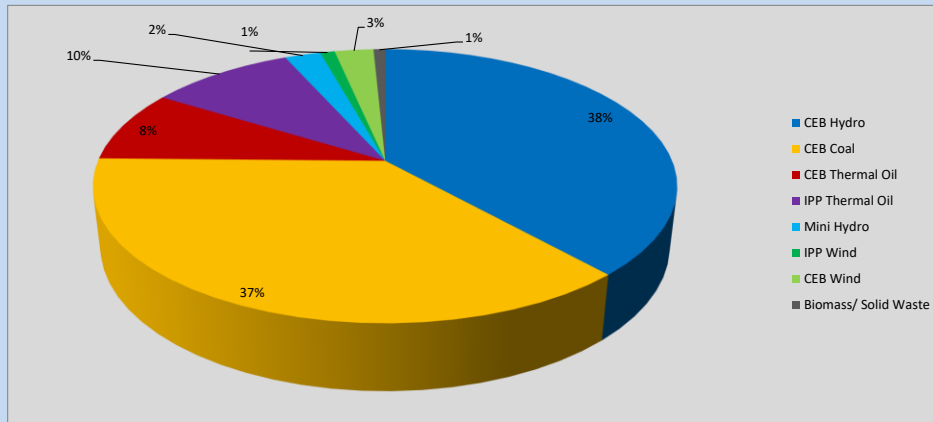


Table 06

CEB Hydro	840	MW
CEB Coal	811	MW
CEB Thermal Oil	186	MW
IPP Thermal Oil	209	MW
Mini Hydro (Telemetered)	52	MW
IPP Wind	21.2	MW
CEB Wind	56.4	MW
Biomass/ Solid Waste	17	MW

Recorded Peak Demand Data

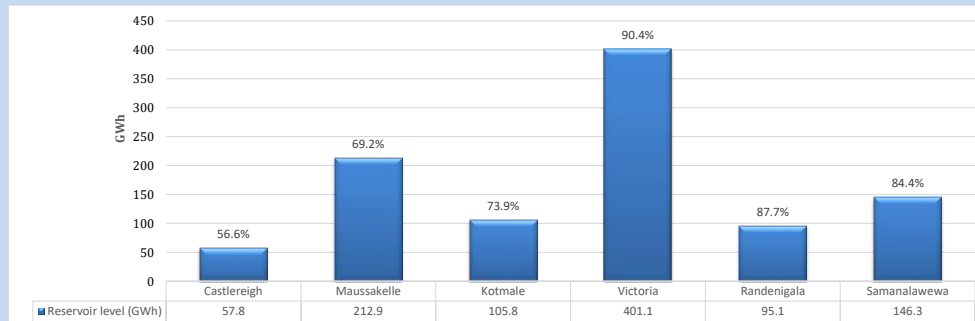
Table 07

Night Peak*	2,193	MW
Day Peak Maximum Demand	1,670	MW
Day Peak Minimum Demand	1,266	MW
Off Peak Minimum Demand	1,374	MW

Above figures are excluding contribution from roof top solar, non telemetered solar and mini hydro plants

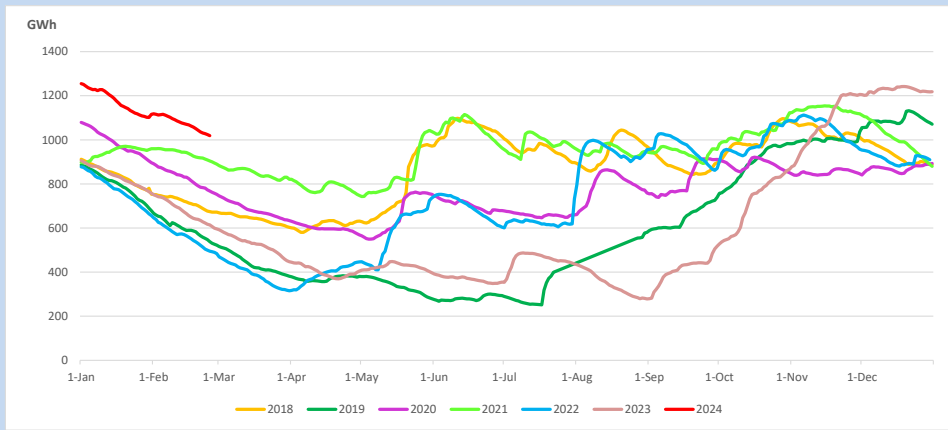
Reservoir Levels -

as at 06.00 Hr on February 26, 2024

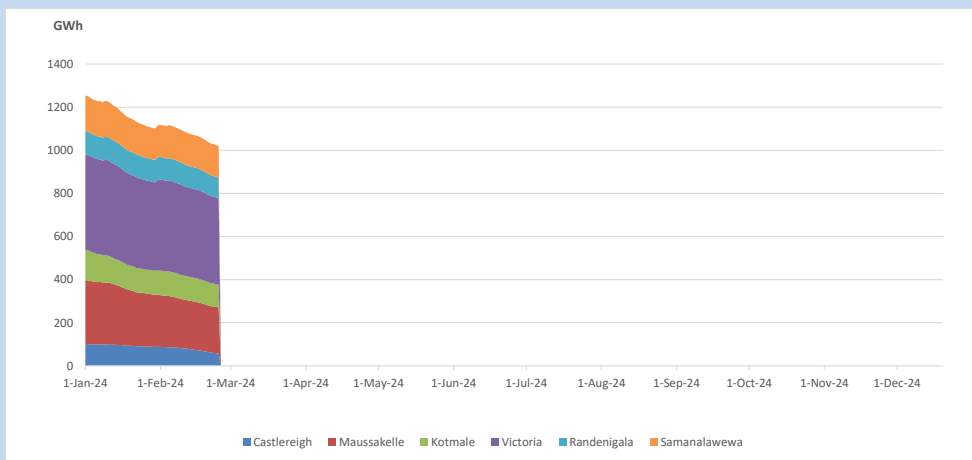


Total Reservoir Level 1019 GWh
% of Total capacity 79.7%

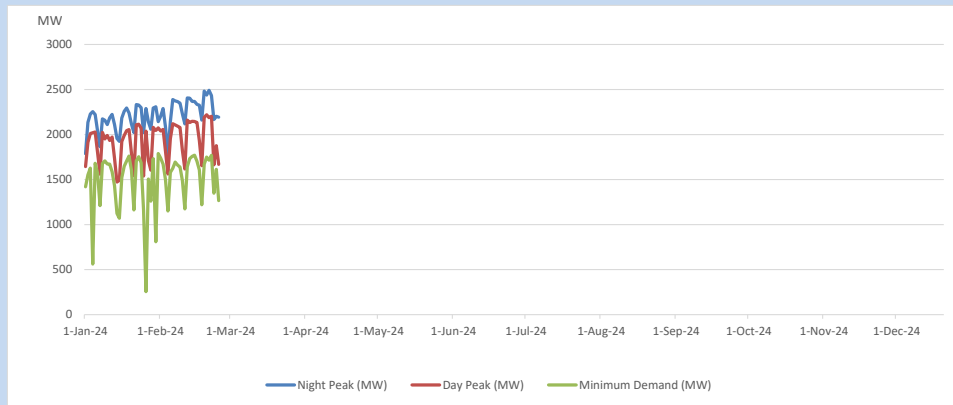
11. Comparison of Total Reservoir Storage Levels with Past Years



12. Variation of Major Hydro Reservoir Levels in the current year (GWh)



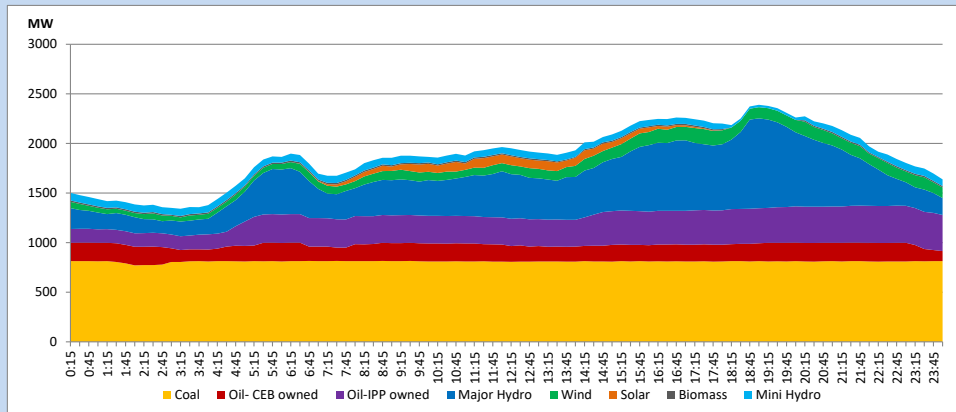
13. Variation of Demand during the current year



The above figures are excluding contribution from roof top solar, non telemetered solar and mini hydro plants

14. Daily Load Curve

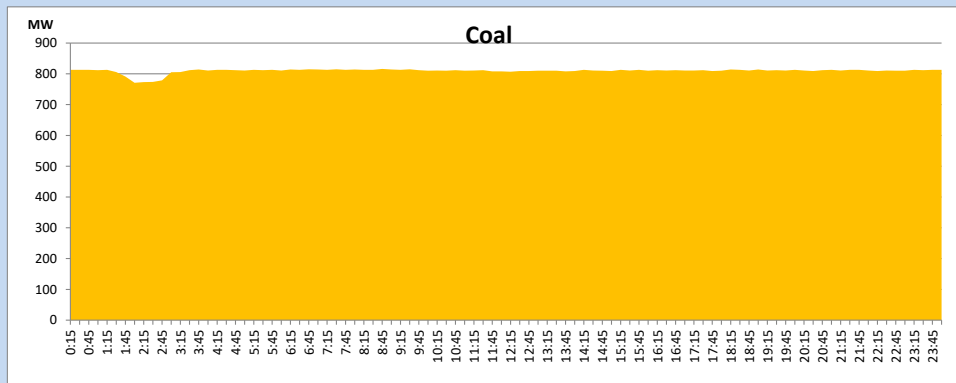
February 25, 2024



Solar and wind data is based on Telemetered Power Stations only

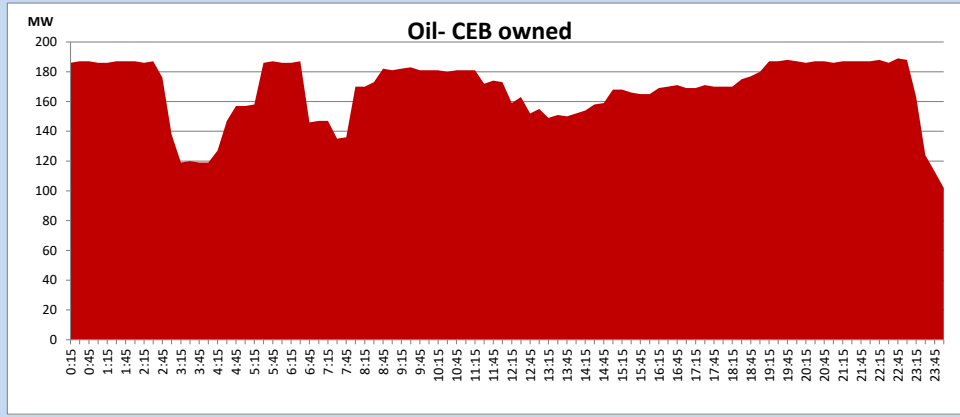
Coal Generation during

February 25, 2024



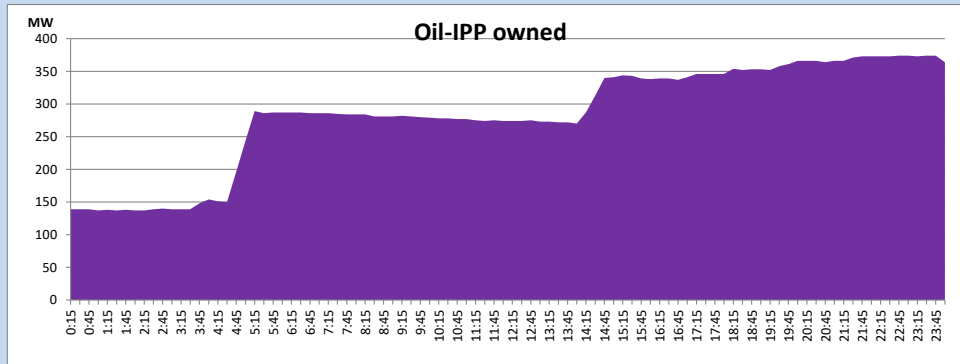
CEB Oil Plant Generation during

February 25, 2024



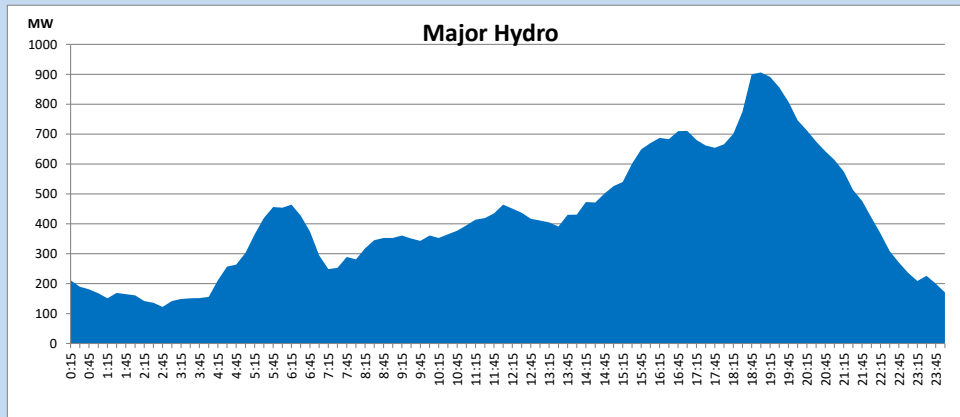
IPP Oil Plant Generation during

February 25, 2024



Major Hydro Generation during

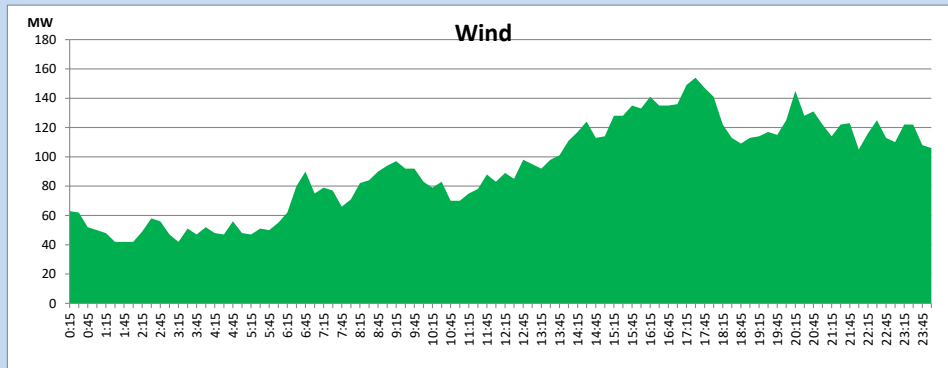
February 25, 2024



Wind Generation during

February 25, 2024

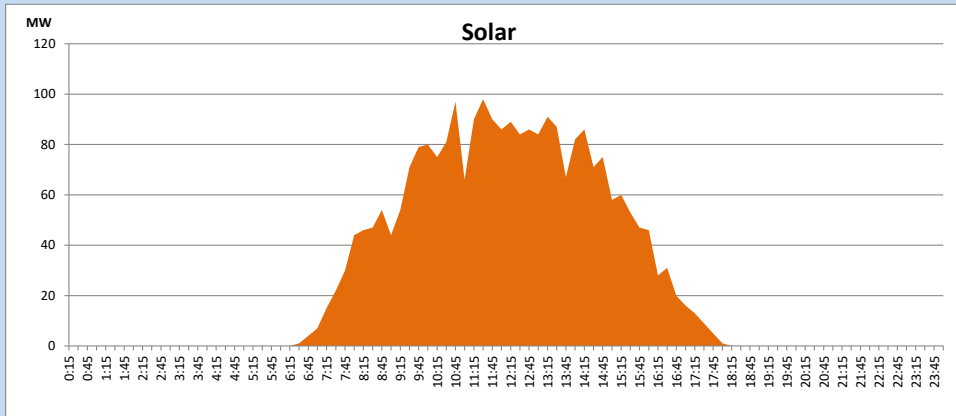
Based on Telemetered Power Stations only



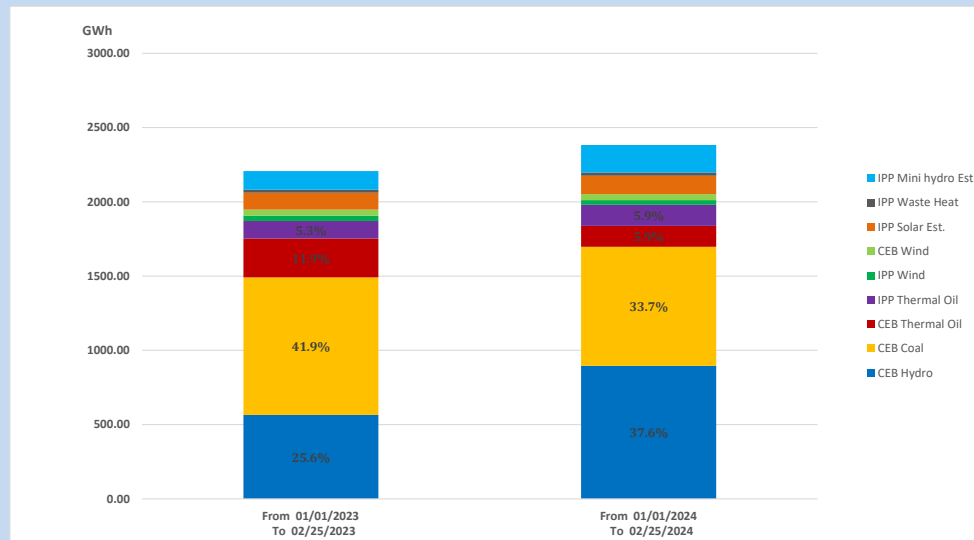
Solar Generation during

February 25, 2024

Based on Telemetered Power Stations only



15. Cumulative Dispatch Comparison with Last Year



Cumulative dispatch

From 01/01/2023 To 02/25/2023

2207 GWh

From 01/01/2024 To 02/25/2024

2382 GWh

The above figures are including contribution from roof top solar, non telemetered solar and mini hydro plants)

Unserviced energy due to power cuts has been excluded in 2023

Thermal Plant Fuel types

Table 08

Power Station	Primary Fuel
CEB Thermal	
Sapugaskanda 1	Heavy Fuel
Sapugaskanda 2	Heavy Fuel
Kelanitissa Small Gas Turbines	Auto Diesel
GT 7 - Kelanitissa	Auto Diesel
Kelanitissa CCY	Naphtha or Diesel
Lakvijaya 1	Coal
Lakvijaya 2	Coal
Lakvijaya 3	Coal
Uthuru Janani	Heavy Fuel
Barge CEB	Heavy Fuel
KCCPS -2	Auto Diesel

Power Station	Primary Fuel
Private Thermal	
West Coast	Auto Diesel / Heavy Fuel
ACE Matara	Heavy Fuel
ACE Embilipitiya	Heavy Fuel

Major Incidents reported during the day

February 25, 2024

Nil.