

# Generation and Reservoirs Statistics

January 25, 2024



PUBLIC UTILITIES COMMISSION OF SRI LANKA

## 1. Daily Generation Mix in MWh

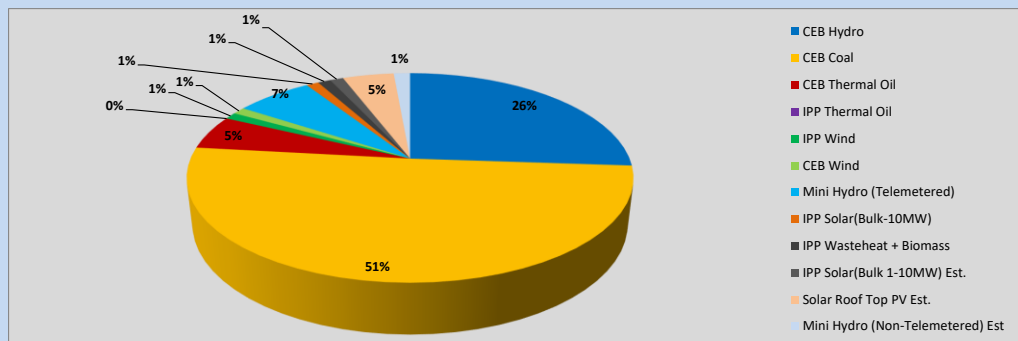


Table 01

	Generation (MWh)
CEB Hydro	9,709
CEB Coal	18,874
CEB Thermal Oil	1,963
IPP Thermal Oil	-
IPP Wind	395
CEB Wind	407
Mini Hydro (Telemetered)	2,470
IPP Solar (Bulk)	399
IPP Waste heat + Biomass	411
<b>Total Generation (Excluding estimated figures)</b>	<b>34,628</b>
* Estimated unserved energy	0
* Estimated Mini Hydro (Non telemetered)	526
* Estimated IPP Solar PV (Bulk 1-10MW)	429
* Estimated Solar Roof Top PV	1650
<b>Total Generation (Including estimated figures)</b>	<b>37,233</b>

\* Estimated figures of CEB generation report

Table 02

	Installed Capacity (MW)
CEB Hydro	1409
CEB Coal	810
CEB Thermal Oil	781
IPP Thermal Oil (West Coast, ACE Matara and ACE Embilipitiya)	387
IPP Wind	148
CEB Wind	100
Mini Hydro	422
IPP Waste heat + Biomass	50
IPP Solar	136
Rooftop Solar (Ordinary)	277
Rooftop Solar (LT Bulk)	263
Rooftop Solar (HT Bulk)	70

Data Source - Monthly Review Report [Aug-2023]

## 2. Cumulative Dispatch

Following data excludes the contribution from roof top solar, non telemetered solar and mini hydro plants

Table 03 - Current Month

Category	Dispatch (GWh)	
CEB Hydro	555	53.41%
CEB Coal	211	20.29%
CEB Thermal Oil	36	3.49%
IPP Thermal	43	4.10%
SPP Wind	12	1.18%
CEB Wind	16	1.54%
Mini Hydro *	102	9.77%
IPP Solar *	56	5.39%
IPP Waste heat + BMP	9	0.84%
<b>Total</b>	<b>1,039</b>	

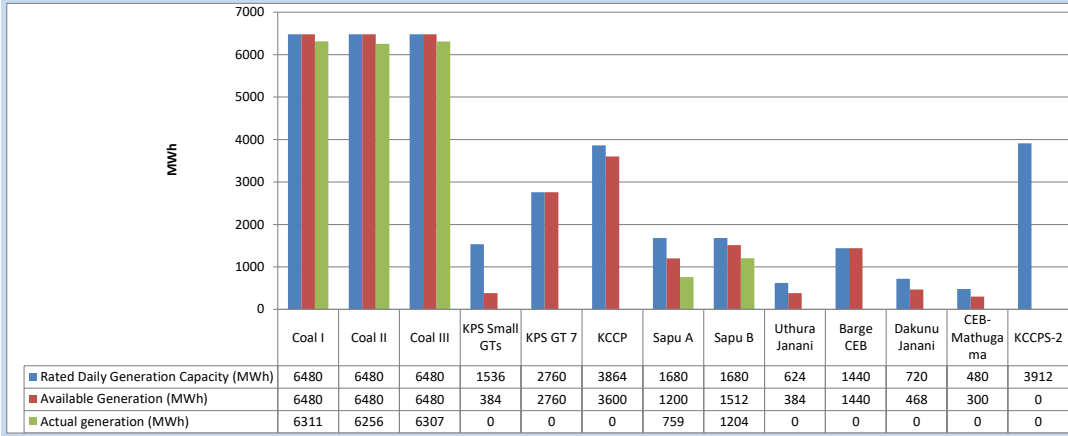
Table 04 - Current Year

Category	Dispatch (GWh)	
CEB Hydro	555	53.41%
CEB Coal	211	20.29%
CEB Thermal Oil	36	3.49%
IPP Thermal	43	4.10%
SPP Wind	12	1.18%
CEB Wind	16	1.54%
Mini Hydro *	102	9.77%
IPP Solar *	56	5.39%
IPP Waste heat	9	0.84%
<b>Total</b>	<b>1,039</b>	

\*Including estimated contribution from non telemetered plants

### 3. CEB owned Thermal Plant Dispatch

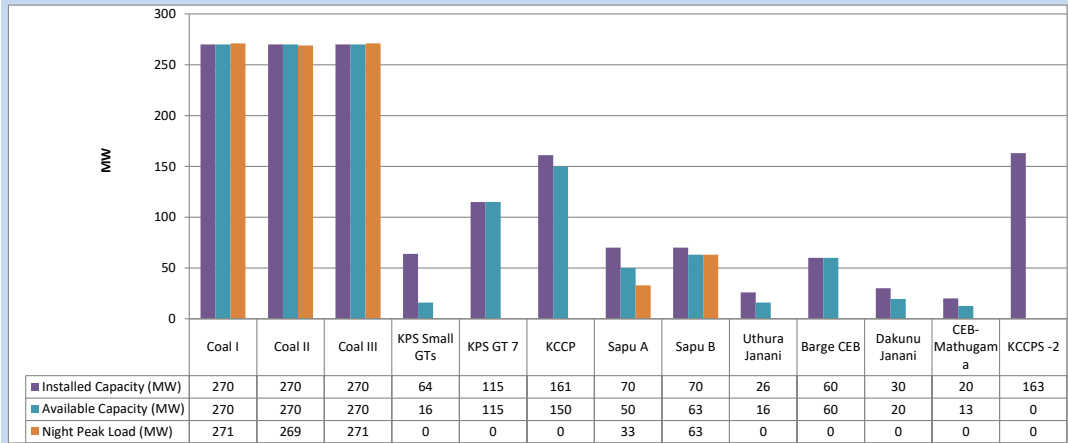
January 25, 2024



Available Generation is estimated based on plant availability at 6.00am on

January 26, 2024

### 4. CEB owned Thermal Plant Loading at the Night Peak

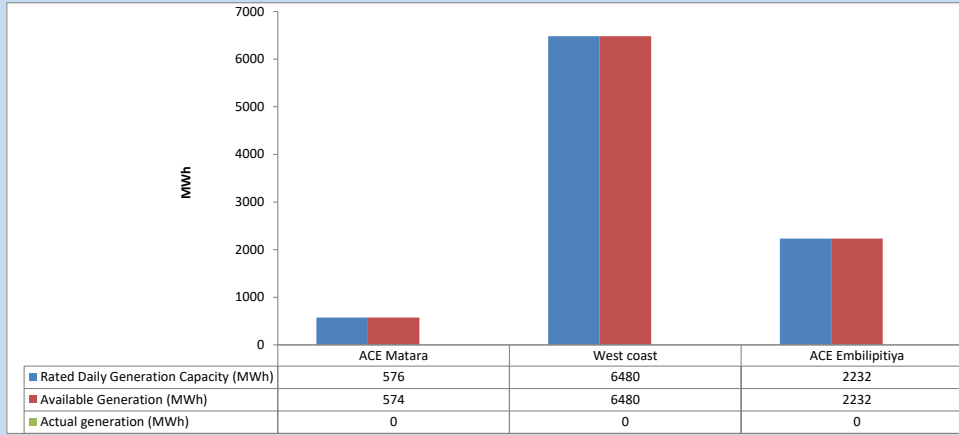


Plant availability is recorded at 6.00 am on

January 26, 2024

### 5. IPP owned Thermal Plant Dispatch

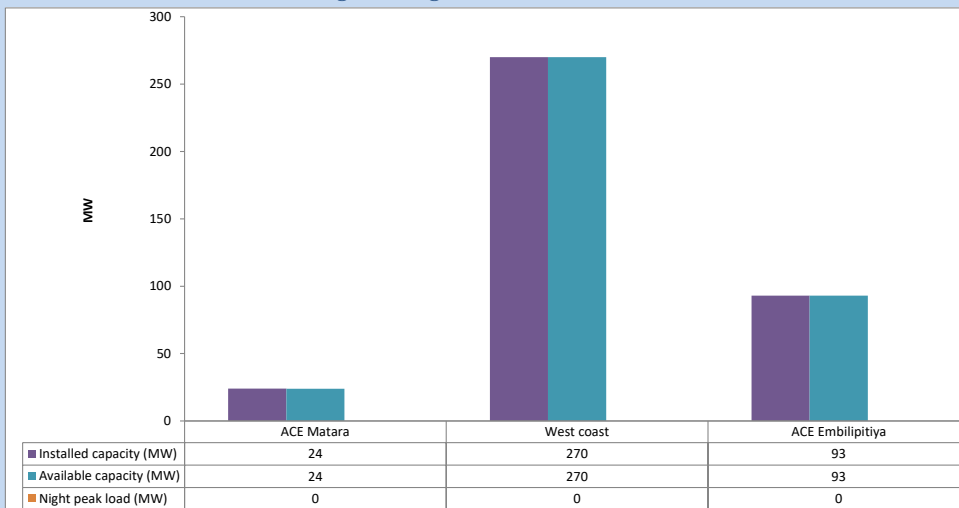
January 25, 2024



Available Generation is estimated based on plant availability at 6.00am on

January 26, 2024

### 6. IPP owned Thermal Plant Loading at the Night Peak

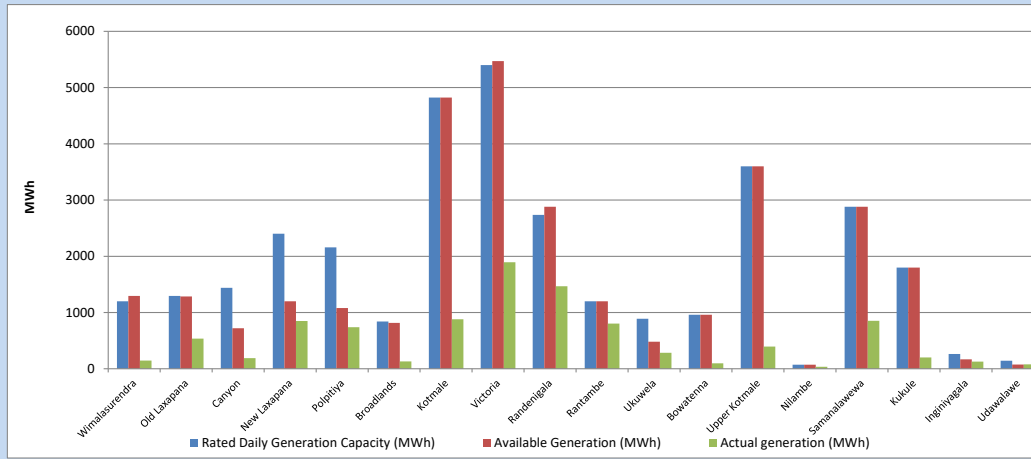


Plant availability is recorded at 6.00 am on

January 26, 2024

### 7. Major Hydro Plant Dispatch

January 25, 2024

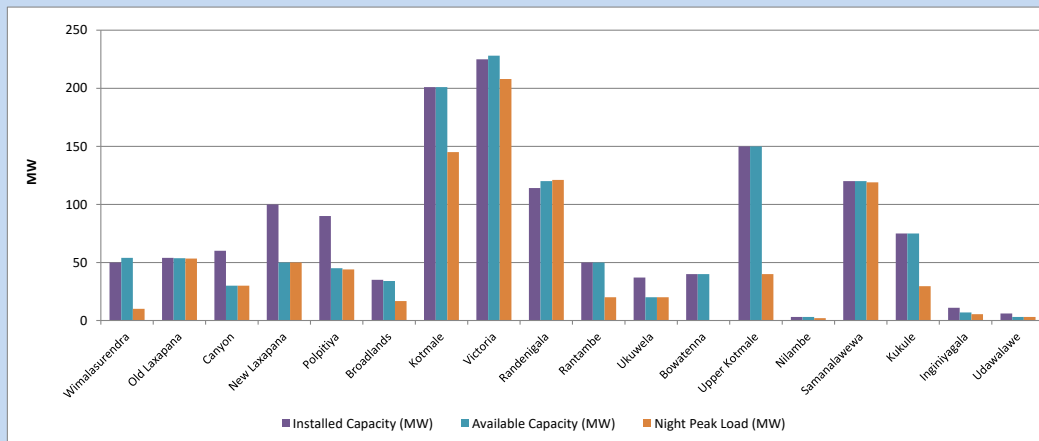


Available Generation is estimated based on plant availability at 6.00am on  
Broadlands power plant is operating in the Commissioning Stage

January 26, 2024

### 8. Major Hydro Plant Loading at Night Peak

January 25, 2024



Plant availability is recorded at 6.00 am on  
Broadlands power plant is operating in the Commissioning Stage

January 26, 2024

## 9. Summary of Major Plant performance

Table 05

Plant	Installed Capacity	Plant Availability	Night peak Load	Plant Dispatch
	(MW)	(MW)	(MW)	(MWh)
Wimalasurendra	50	54	10	147
Old Laxapana	54	54	53	537
Canyon	60	30	30	189
New Laxapana	100	50	50	851
Polpitiya	90	45	44	740
Broadlands	35	34	17	132
Kotmale	201	201	145	880
Victoria	225	228	208	1,894
Randenigala	114	120	121	1,466
Rantambe	50	50	20	802
Ukuwela	37	20	20	285
Bowatenna	40	40	0	96
Upper Kotmale	150	150	40	396
Nilambe	3	3	2	34
Samanalawewa	120	120	119	853
Kukule	75	75	30	202
Inginiyagala	11	7	5	127
Udawalawe	6	3	3	78
Puttalam Coal I	270	270	271	6,311
Puttalam Coal II	270	270	269	6,256
Puttalam Coal III	270	270	271	6,307
KPS Small GTs	64	16	0	0
KPS GT 7	115	115	0	0
KCCP	161	150	0	0
Sapugaskanda A	70	50	33	759
Sapugaskanda B	70	63	63	1,204
Uthura Janani	26	16	0	0
Barge CEB	60	60	0	0
CEB-Hambantota	30	20	0	0
CEB-Mathugama	20	13	0	0
ACE Matara	24	24	0	0
Asia Power	50	0	0	0
KCCPS -2	163	0	0	0
West Coast	270	270	0	0
Nothern Power	36	0	0	0
ACE Embilipitiya	93	93	0	0
Total	3,483	2,983	1,992	34,628

Plant availability is the availability recorded at 6 am on

January 26, 2024

### 10. Contribution to the Night Peak in MW

January 25, 2024

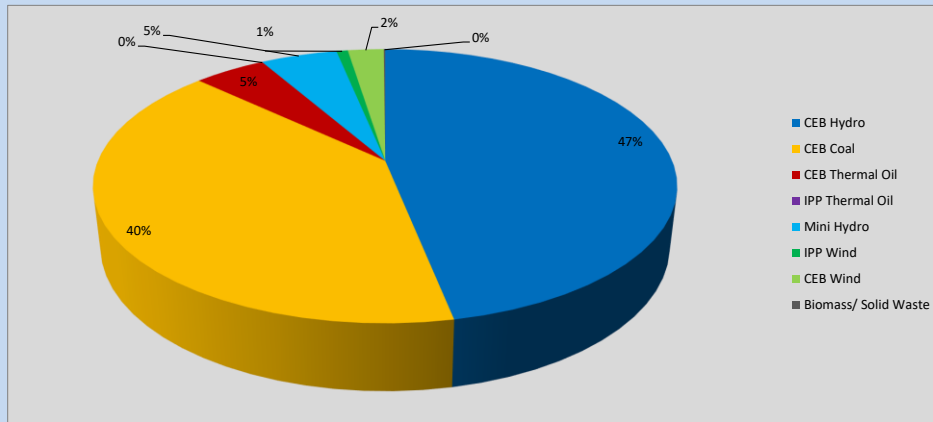


Table 06

CEB Hydro	948	MW
CEB Coal	811	MW
CEB Thermal Oil	96	MW
IPP Thermal Oil	0	MW
Mini Hydro (Telemetered)	103	MW
IPP Wind	15.3	MW
CEB Wind	48	MW
Biomass/ Solid Waste	2	MW

### Recorded Peak Demand Data

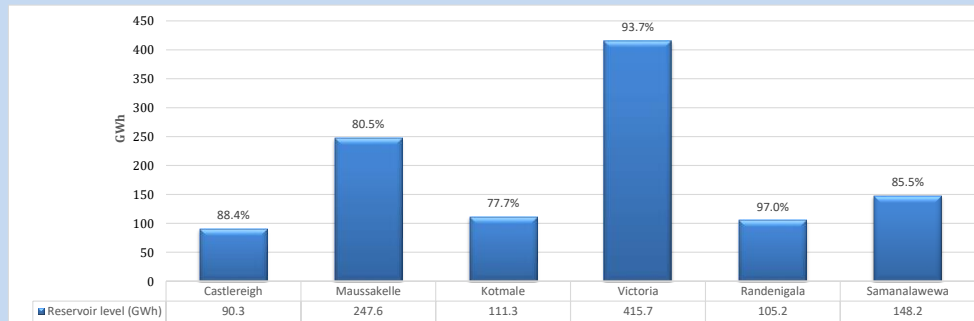
Table 07

Night Peak*	2,023	MW
Day Peak Maximum Demand	1,538	MW
Day Peak Minimum Demand	1,164	MW
Off Peak Minimum Demand	1,277	MW

Above figures are excluding contribution from roof top solar, non telemetered solar and mini hydro plants

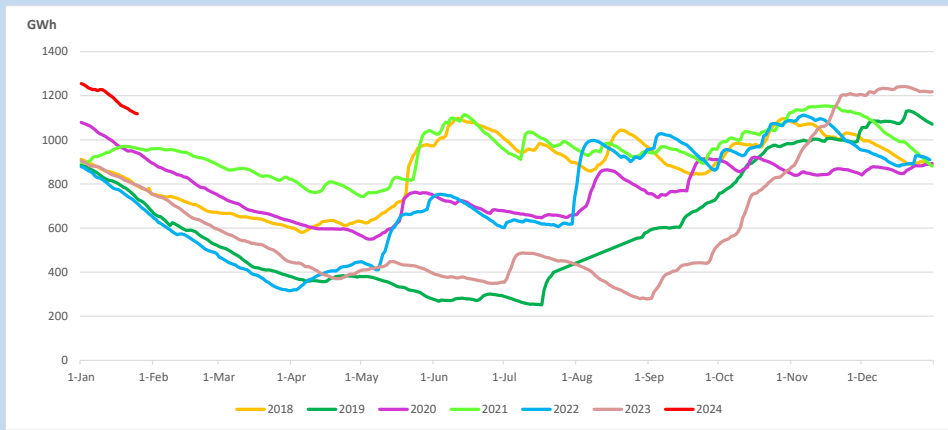
### Reservoir Levels -

as at 06.00 Hr on January 26, 2024

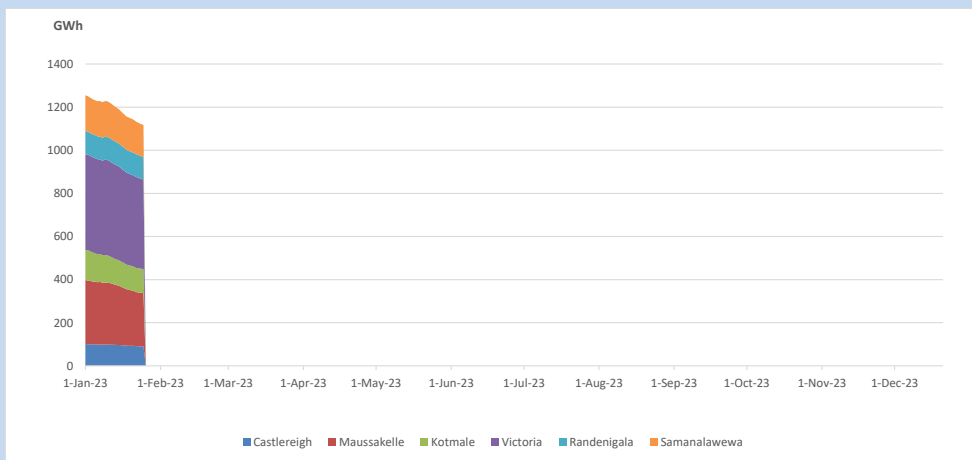


Total Reservoir Level 1118.3 GWh  
% of Total capacity 87.5%

### 11. Comparison of Total Reservoir Storage Levels with Past Years

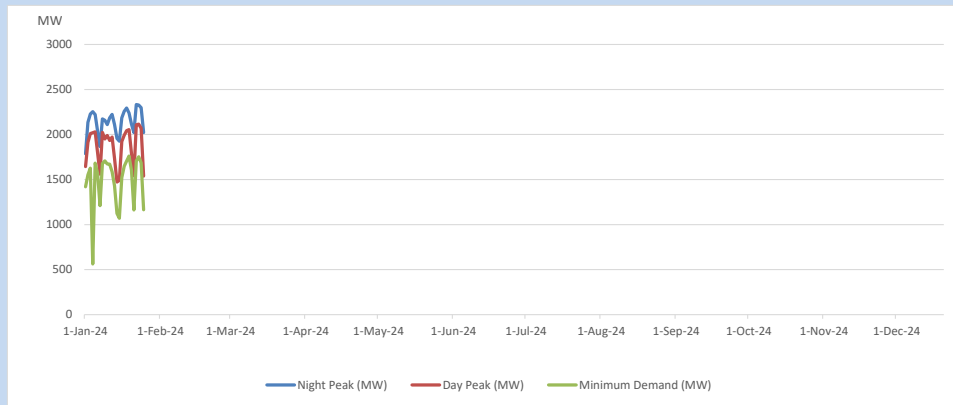


### 12. Variation of Major Hydro Reservoir Levels in the current year (GWh)





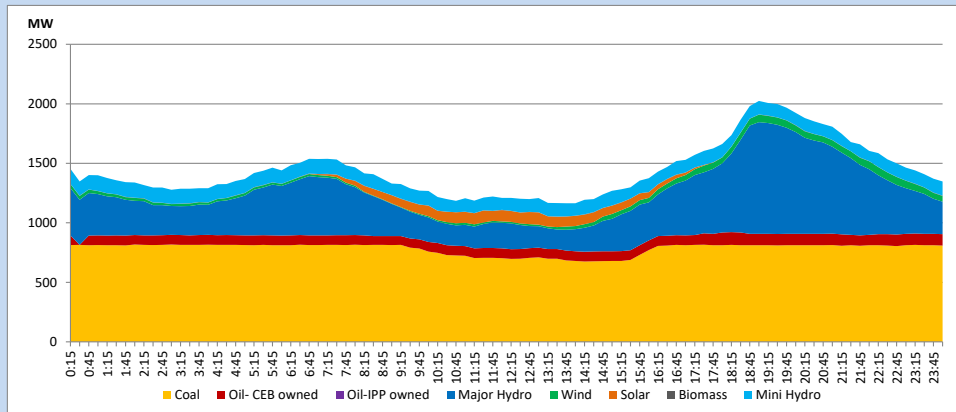
### 13. Variation of Demand during the current year



The above figures are excluding contribution from roof top solar, non telemetered solar and mini hydro plants

### 14. Daily Load Curve

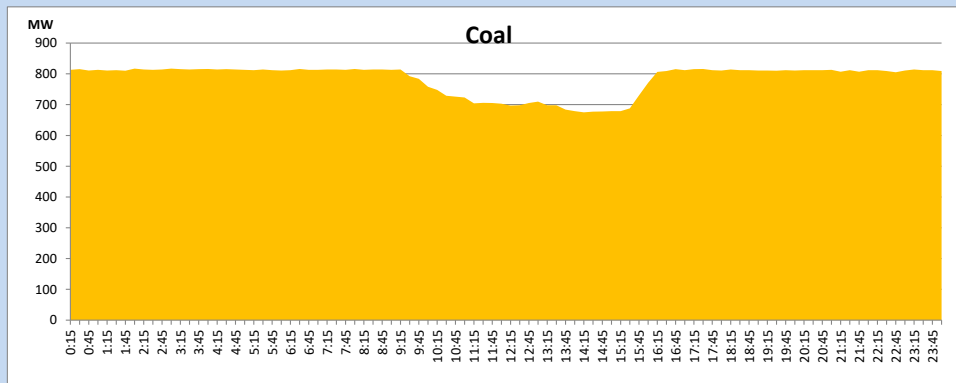
January 25, 2024



Solar and wind data is based on Telemetered Power Stations only

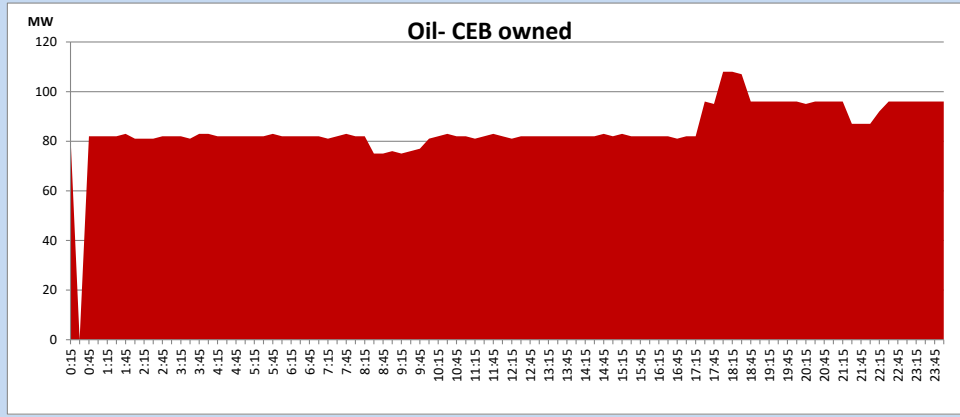
### Coal Generation during

January 25, 2024



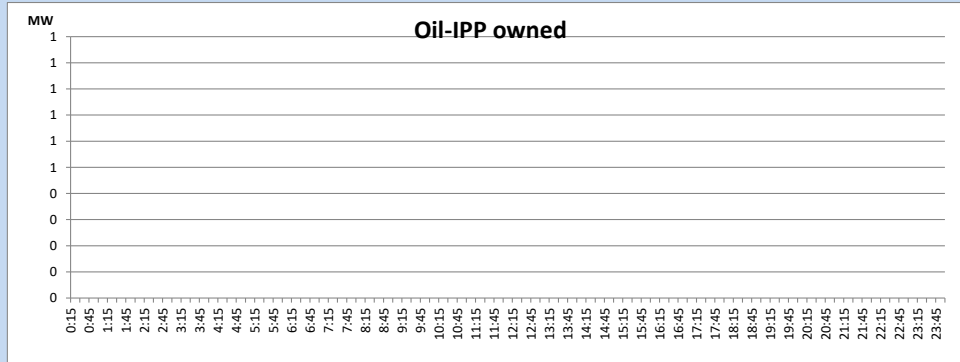
CEB Oil Plant Generation during

January 25, 2024



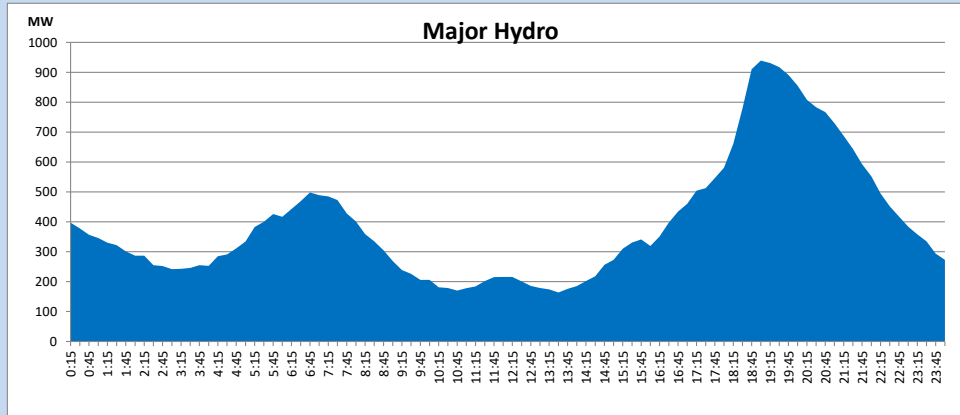
IPP Oil Plant Generation during

January 25, 2024



Major Hydro Generation during

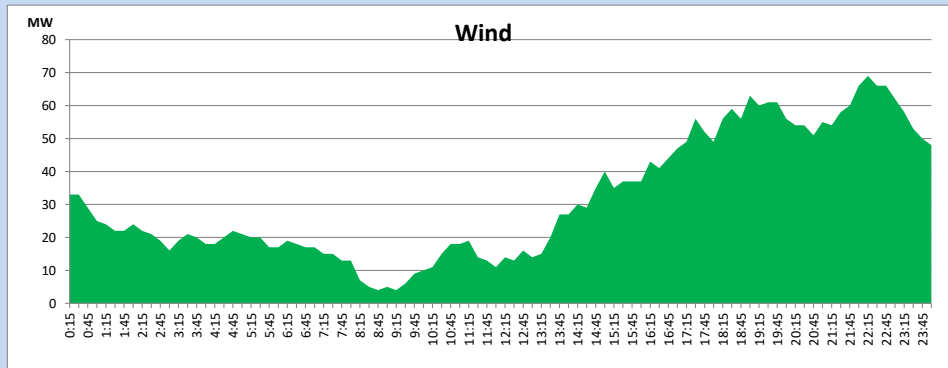
January 25, 2024



## Wind Generation during

January 25, 2024

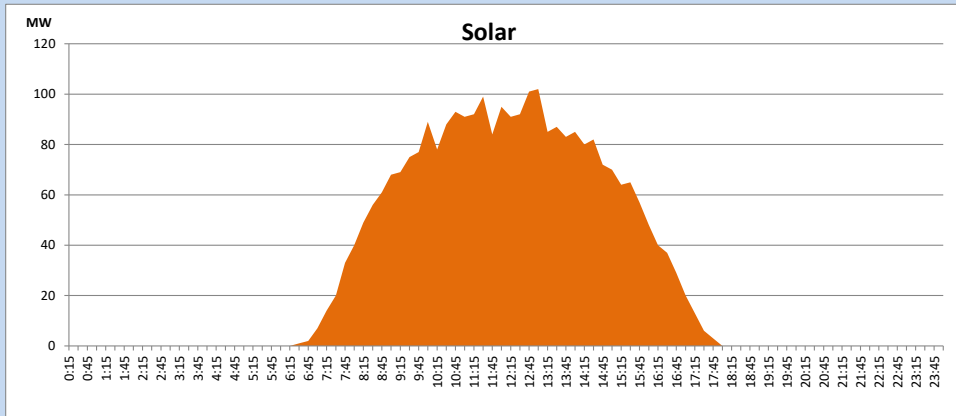
Based on Telemetered Power Stations only



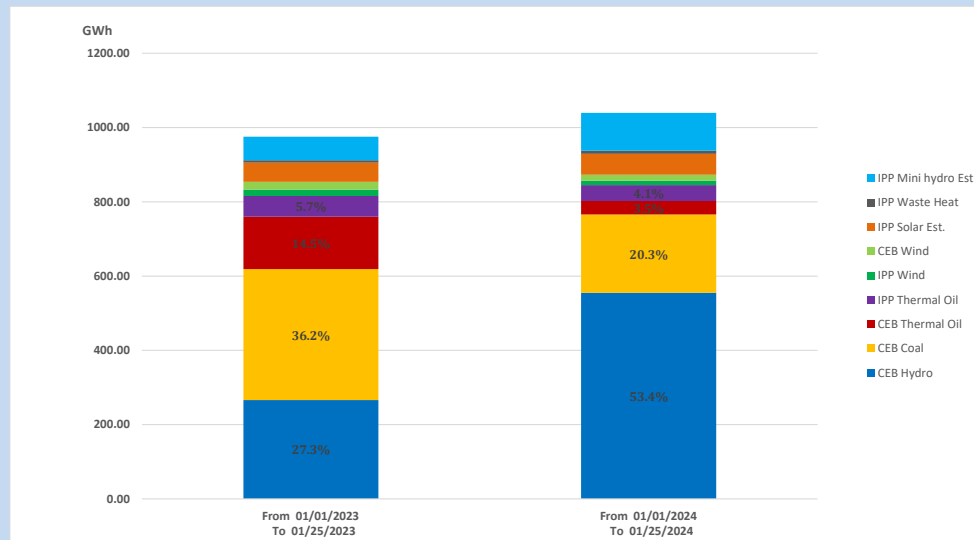
## Solar Generation during

January 25, 2024

Based on Telemetered Power Stations only



## 15. Cumulative Dispatch Comparison with Last Year



### Cumulative dispatch

\* From 01/01/2023 To 01/25/2023  
From 01/01/2024 To 01/25/2024

975 GWh  
1039 GWh

The above figures are including contribution from roof top solar, non telemetered solar and mini hydro plants)

Thermal Plant Fuel types

Table 08

Power Station	Primary Fuel
CEB Thermal	
Sapugaskanda 1	Heavy Fuel
Sapugaskanda 2	Heavy Fuel
Kelanitissa Small Gas Turbines	Auto Diesel
GT 7 - Kelanitissa	Auto Diesel
Kelanitissa CCY	Naphtha or Diesel
Lakvijaya 1	Coal
Lakvijaya 2	Coal
Lakvijaya 3	Coal
Uthuru Janani	Heavy Fuel
Barge CEB	Heavy Fuel
KCCPS -2	Auto Diesel

Power Station	Primary Fuel
Private Thermal	
West Coast	Auto Diesel / Heavy Fuel
ACE Matara	Heavy Fuel
ACE Embilipitiya	Heavy Fuel

Major Incidents reported during the day

January 25, 2024

- 1) Badulla - Rantambe 132kV cct 01 tripped from both ends at 15:27hrs due to operation of Distance protection.  
Badulla - Rantambe 132kV cct 01 was restored at 15:53hrs