

Generation and Reservoirs Statistics

February 24, 2024



PUBLIC UTILITIES COMMISSION OF SRI LANKA

1. Daily Generation Mix in MWh

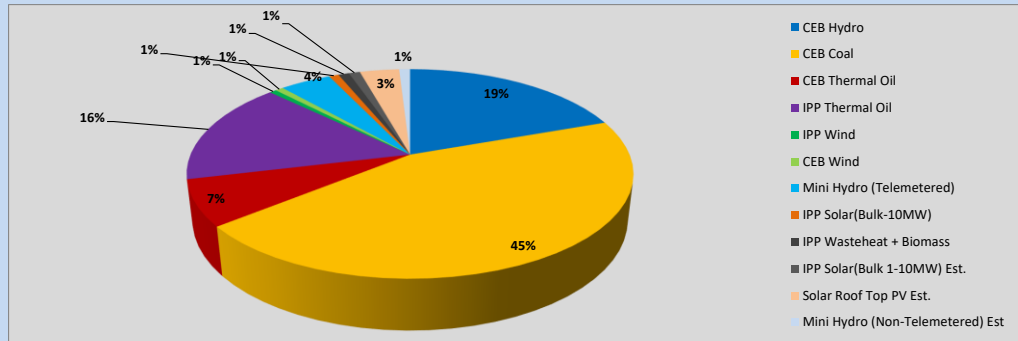


Table 01

	Generation (MWh)
CEB Hydro	8,426
CEB Coal	19,202
CEB Thermal Oil	3,052
IPP Thermal Oil	6,864
IPP Wind	255
CEB Wind	301
Mini Hydro (Telemetered)	1,902
IPP Solar (Bulk)	362
IPP Waste heat + Biomass	401
Total Generation (Excluding estimated figures)	40,765
* Estimated unserved energy	0
* Estimated Mini Hydro (Non telemetered)	405
* Estimated IPP Solar PV (Bulk 1-10MW)	417
* Estimated Solar Roof Top PV	1470
Total Generation (Including estimated figures)	43,057

* Estimated figures of CEB generation report

Table 02

	Installed Capacity (MW)
CEB Hydro	1644
CEB Coal	810
CEB Thermal Oil	773.1
IPP Thermal Oil (West Coast, ACE Matara and ACE Embilipitiya)	386.9
IPP Wind	163
CEB Wind	100
Mini Hydro	422
IPP Waste heat + Biomass	54
IPP Solar	137
Rooftop Solar (Ordinary)	293
Rooftop Solar (LT Bulk)	272
Rooftop Solar (HT Bulk)	74

Data Source - Monthly Review Report [Nov-2023]

2. Cumulative Dispatch

Following data excludes the contribution from roof top solar, non telemetered solar and mini hydro plants

Table 03 - Current Month

Category	Dispatch (GWh)	
CEB Hydro	257	24.56%
CEB Coal	459	43.84%
CEB Thermal Oil	80	7.61%
IPP Thermal	92	8.78%
SPP Wind	15	1.43%
CEB Wind	18	1.69%
Mini Hydro *	64	6.13%
IPP Solar *	52	4.97%
IPP Waste heat + BMP	10	0.94%
Total	1,047	

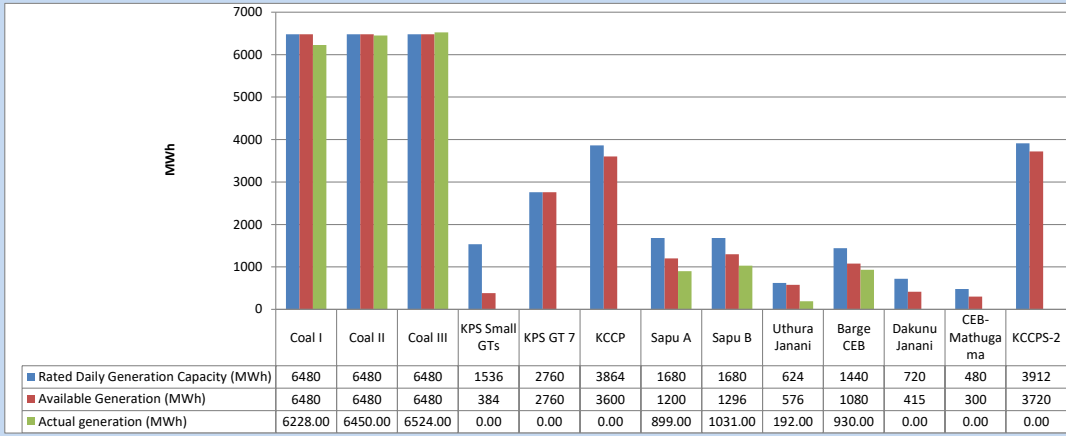
Table 04 - Current Year

Category	Dispatch (GWh)	
CEB Hydro	889	37.92%
CEB Coal	783	33.42%
CEB Thermal Oil	137	5.85%
IPP Thermal	138	5.88%
SPP Wind	32	1.35%
CEB Wind	40	1.69%
Mini Hydro *	183	7.82%
IPP Solar *	122	5.19%
IPP Waste heat	21	0.89%
Total	2,343	

*Including estimated contribution from non telemetered plants

3. CEB owned Thermal Plant Dispatch

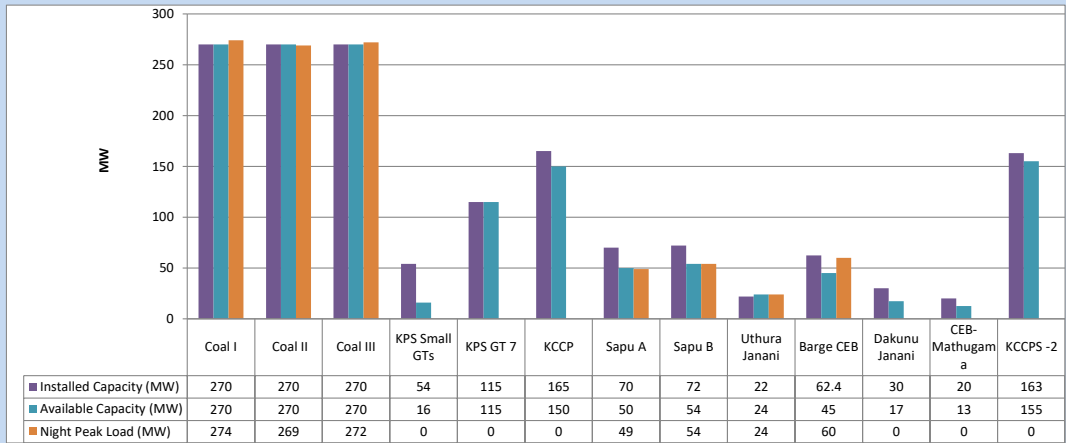
February 24, 2024



Available Generation is estimated based on plant availability at 6.00am on

February 25, 2024

4. CEB owned Thermal Plant Loading at the Night Peak

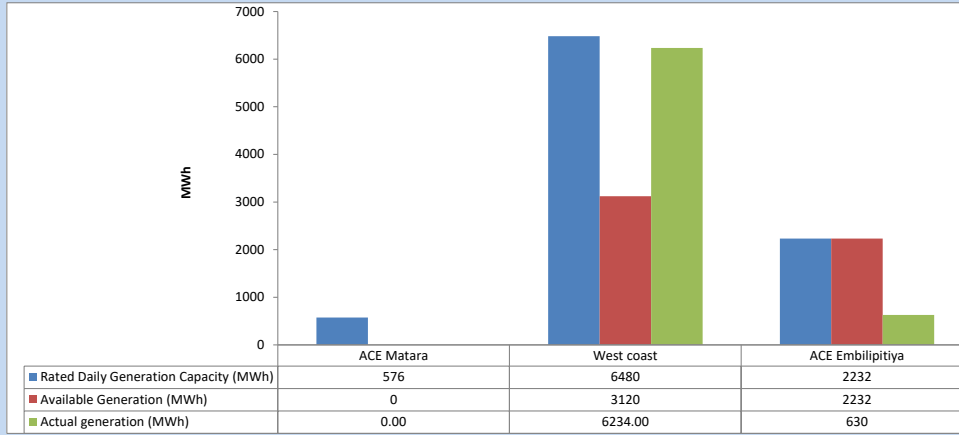


Plant availability is recorded at 6.00 am on

February 25, 2024

5. IPP owned Thermal Plant Dispatch

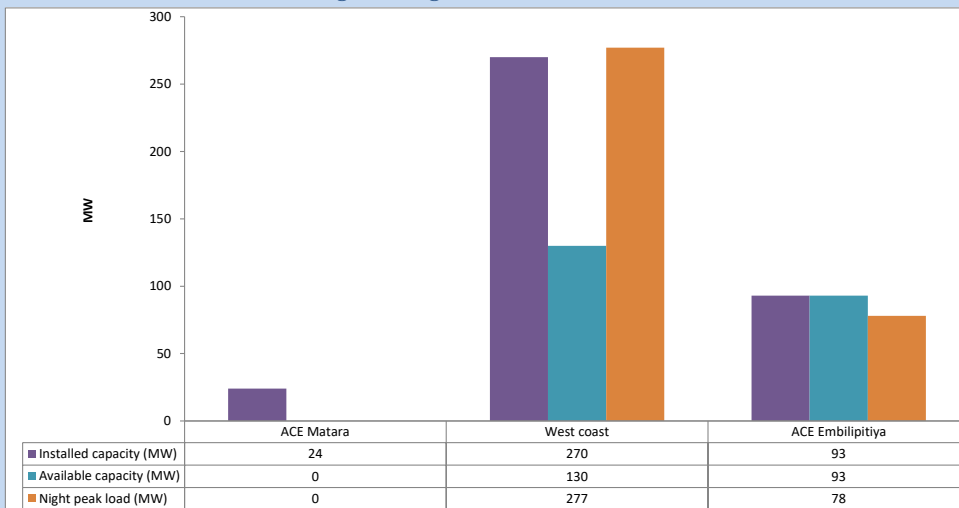
February 24, 2024



Available Generation is estimated based on plant availability at 6.00am on

February 25, 2024

6. IPP owned Thermal Plant Loading at the Night Peak

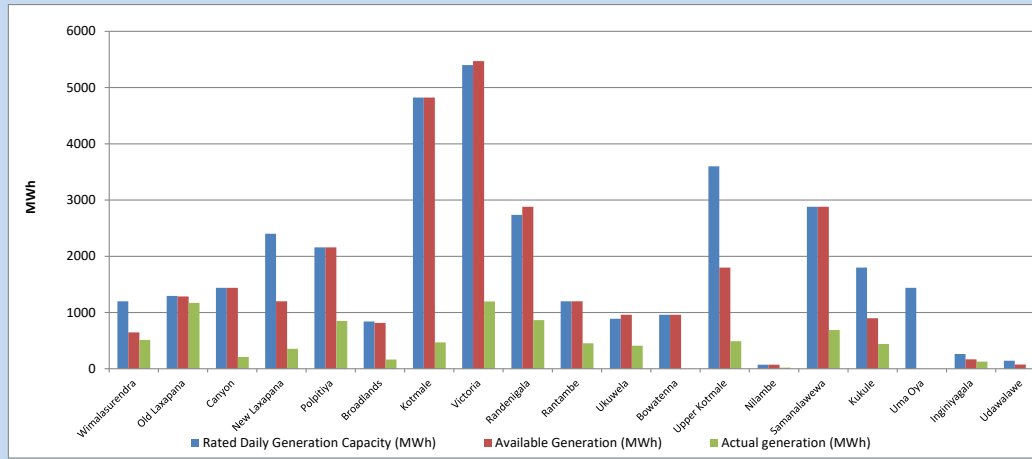


Plant availability is recorded at 6.00 am on

February 25, 2024

7. Major Hydro Plant Dispatch

February 24, 2024

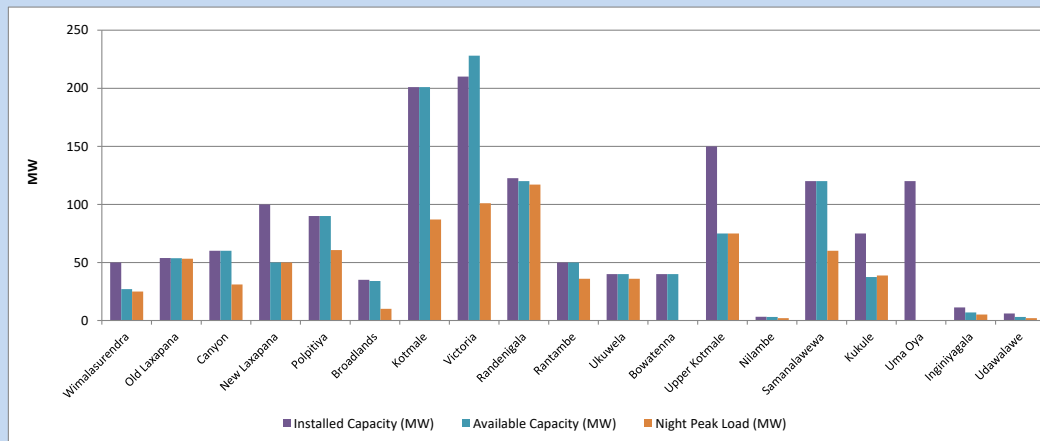


Available Generation is estimated based on plant availability at 6.00am on
Broadlands power plant is operating in the Commissioning Stage

February 25, 2024

8. Major Hydro Plant Loading at Night Peak

February 24, 2024



Plant availability is recorded at 6.00 am on
Broadlands power plant is operating in the Commissioning Stage

February 25, 2024

9. Summary of Major Plant performance

Table 05

Plant	Maximum Available Total Capacity	Plant Availability	Night peak Load	Plant Dispatch
	(MW)	(MW)	(MW)	(MWh)
Wimalasurendra	50	27	25	512
Old Laxapana	54	54	53	1,172
Canyon	60	60	31	210
New Laxapana	100	50	50	354
Polpitiya	90	90	61	850
Broadlands	35	34	10	164
Kotmale	201	201	87	470
Victoria	210	228	101	1,198
Randenigala	123	120	117	864
Rantambe	50	50	36	453
Ukuwela	40	40	36	411
Bowatenna	40	40	0	0
Upper Kotmale	150	75	75	490
Nilambe	3	3	2	20
Samanalawewa	120	120	60	691
Kukule	75	38	39	440
Uma Oya (Testing)	120	0	0	0
Inginiyagala	11	7	5	127
Udawalawe	6	3	2	0
Puttalam Coal I	270	270	274	6,228
Puttalam Coal II	270	270	269	6,450
Puttalam Coal III	270	270	272	6,524
KPS Small GTs	54	16	0	0
KPS GT 7	115	115	0	0
KCCP	165	150	0	0
Sapugaskanda A	70	50	49	899
Sapugaskanda B	72	54	54	1,031
Uthura Janani	22	24	24	192
Barge CEB	62	45	60	930
CEB-Hambantota	30	17	0	0
CEB-Mathugama	20	13	0	0
ACE Matara	24	0	0	0
Asia Power	50	0	0	0
KCCPS -2	163	155	0	0
West Coast	270	130	277	6,234
Nothern Power	36	0	0	0
ACE Embilipitiya	93	93	78	630
Total	3,594	2,911	2,188	40,765

Note-

Plant availability is the availability recorded at 6 am on

February 25, 2024

Installed Capacity is sourced from CEB Annual Report- 2022

10. Contribution to the Night Peak in MW

February 24, 2024

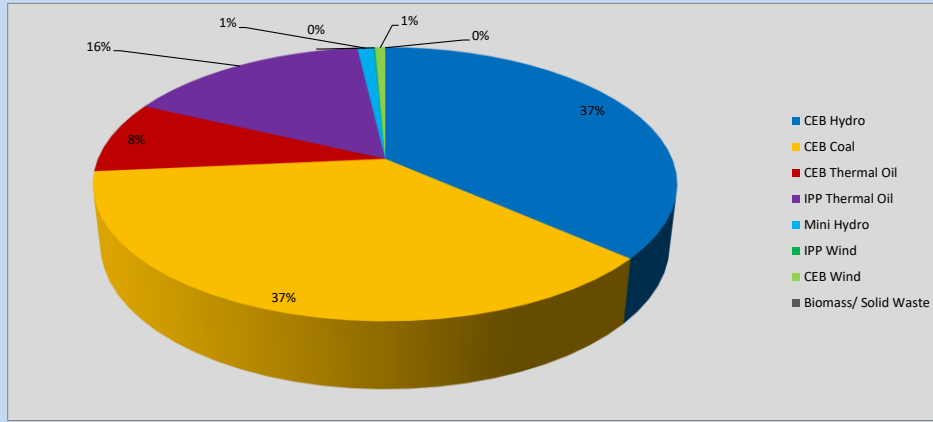


Table 06

CEB Hydro	804	MW
CEB Coal	815	MW
CEB Thermal Oil	187	MW
IPP Thermal Oil	355	MW
Mini Hydro (Telemetered)	24	MW
IPP Wind	1.9	MW
CEB Wind	14.8	MW
Biomass/ Solid Waste	0	MW

Recorded Peak Demand Data

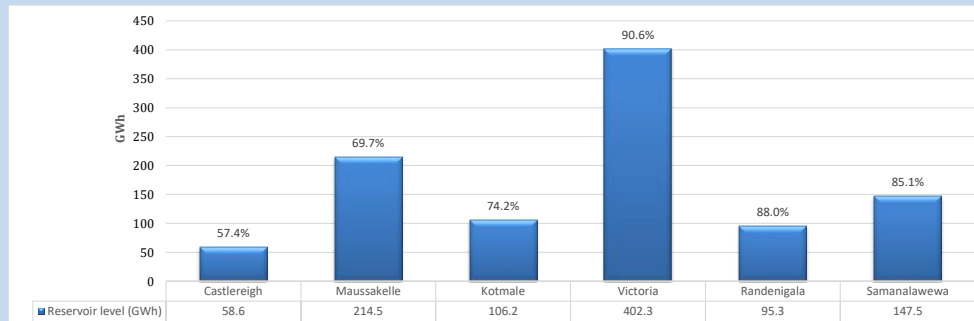
Table 07

Night Peak*	2,202	MW
Day Peak Maximum Demand	1,877	MW
Day Peak Minimum Demand	1,614	MW
Off Peak Minimum Demand	1,398	MW

Above figures are excluding contribution from roof top solar, non telemetered solar and mini hydro plants

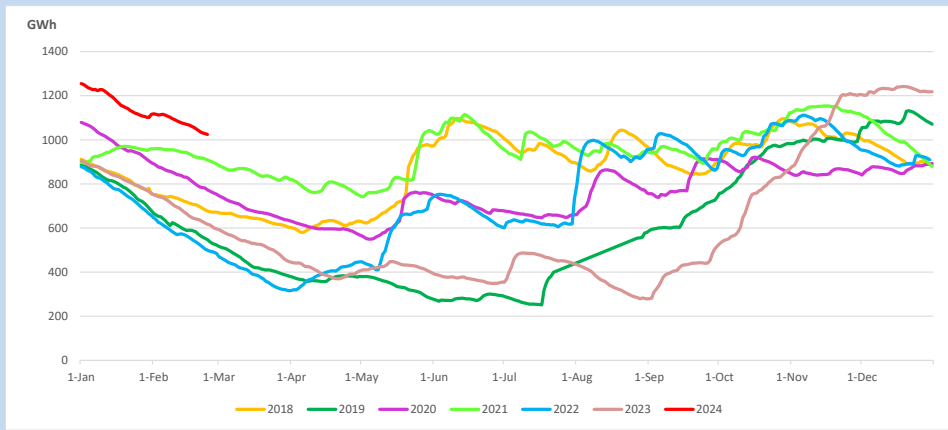
Reservoir Levels -

as at 06.00 Hr on February 25, 2024

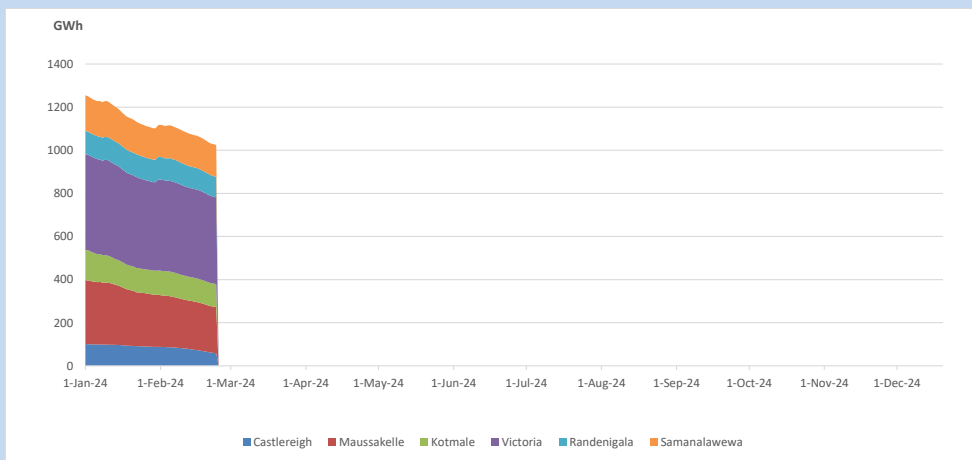


Total Reservoir Level 1024.4 GWh
% of Total capacity 80.1%

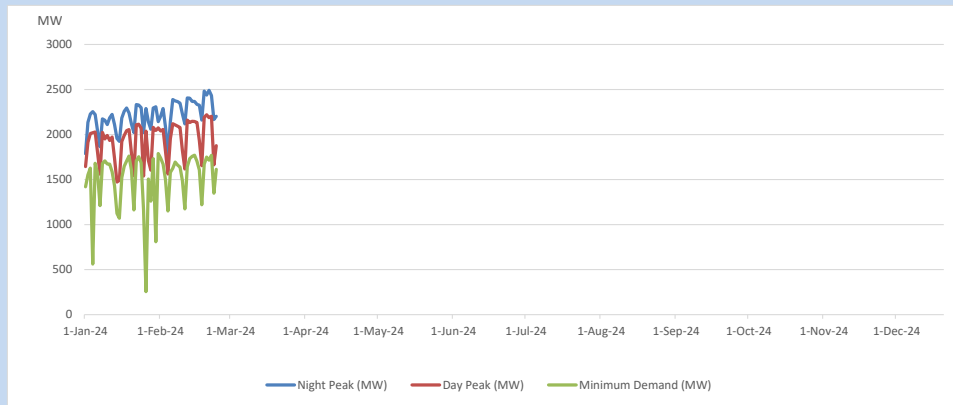
11. Comparison of Total Reservoir Storage Levels with Past Years



12. Variation of Major Hydro Reservoir Levels in the current year (GWh)



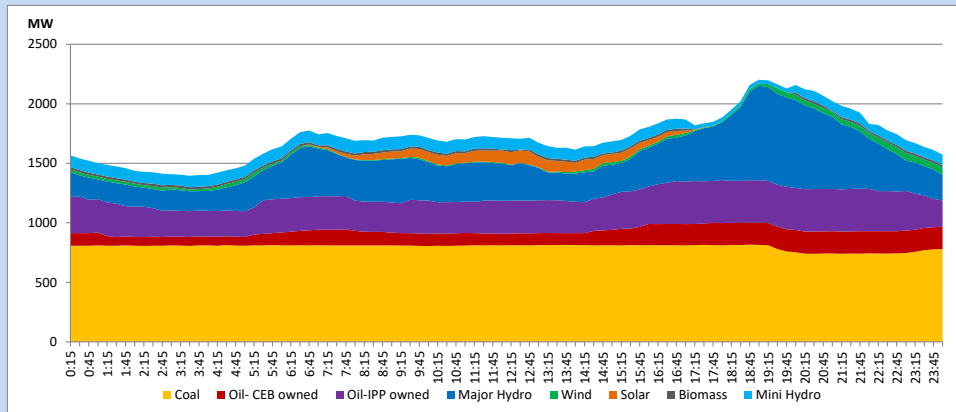
13. Variation of Demand during the current year



The above figures are excluding contribution from roof top solar, non telemetered solar and mini hydro plants

14. Daily Load Curve

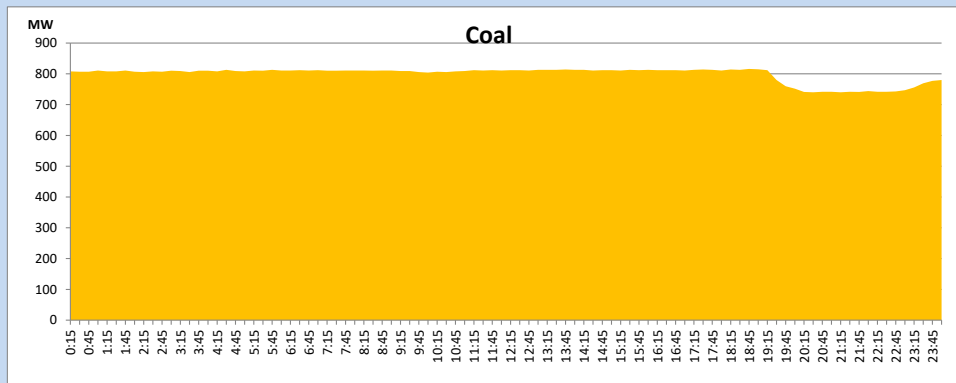
February 24, 2024



Solar and wind data is based on Telemetered Power Stations only

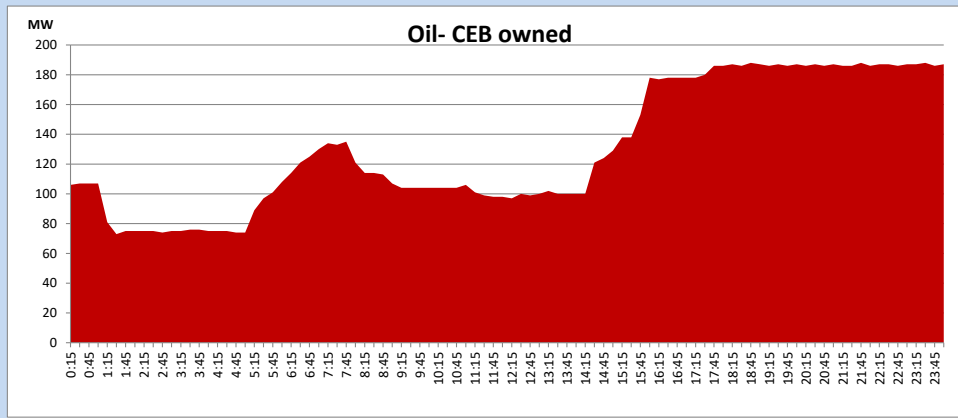
Coal Generation during

February 24, 2024



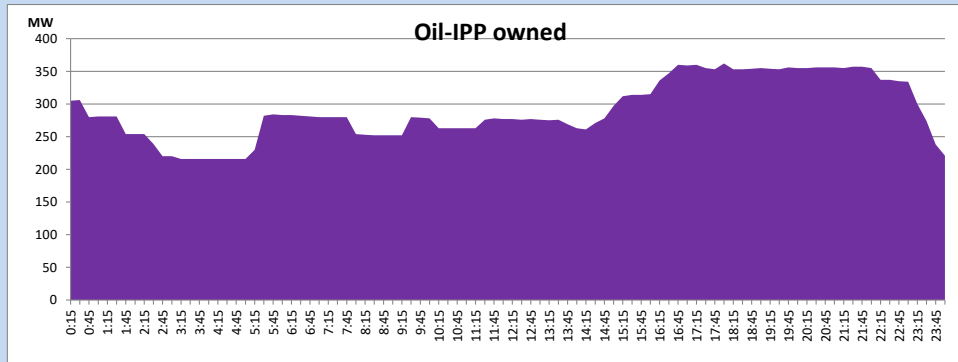
CEB Oil Plant Generation during

February 24, 2024



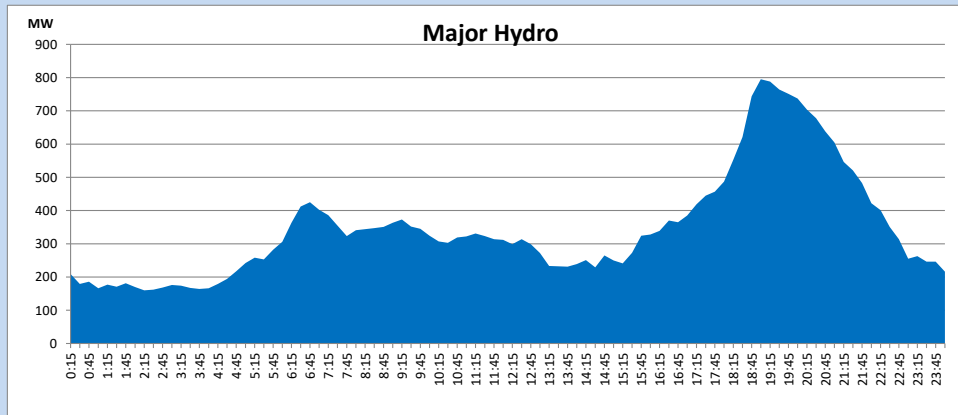
IPP Oil Plant Generation during

February 24, 2024



Major Hydro Generation during

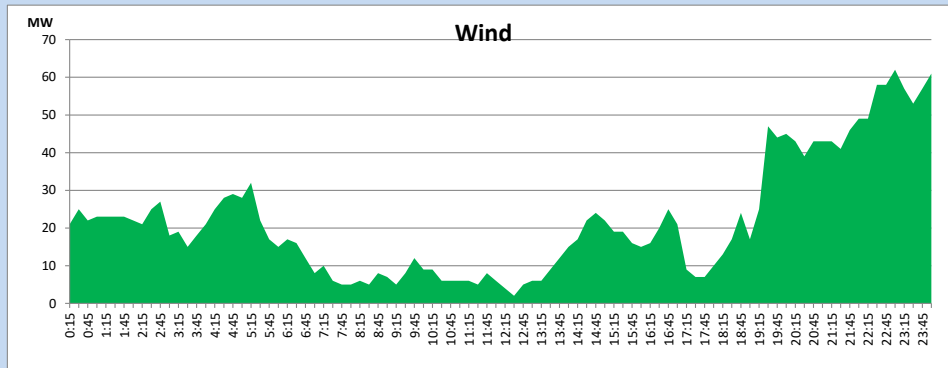
February 24, 2024



Wind Generation during

February 24, 2024

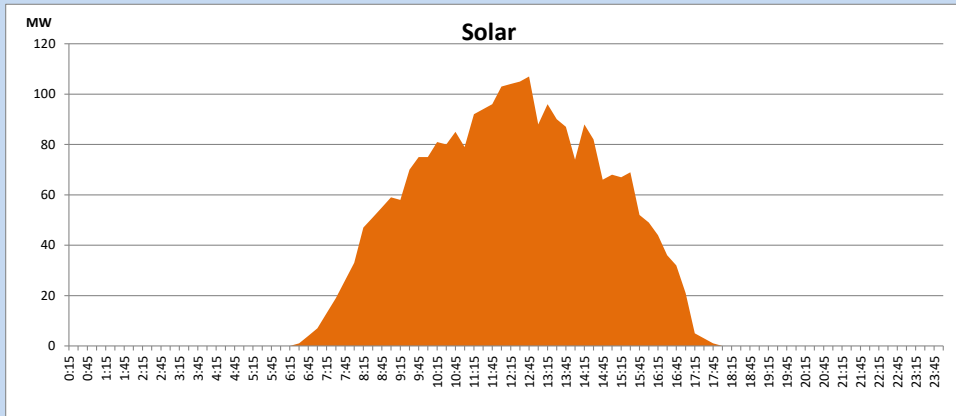
Based on Telemetered Power Stations only



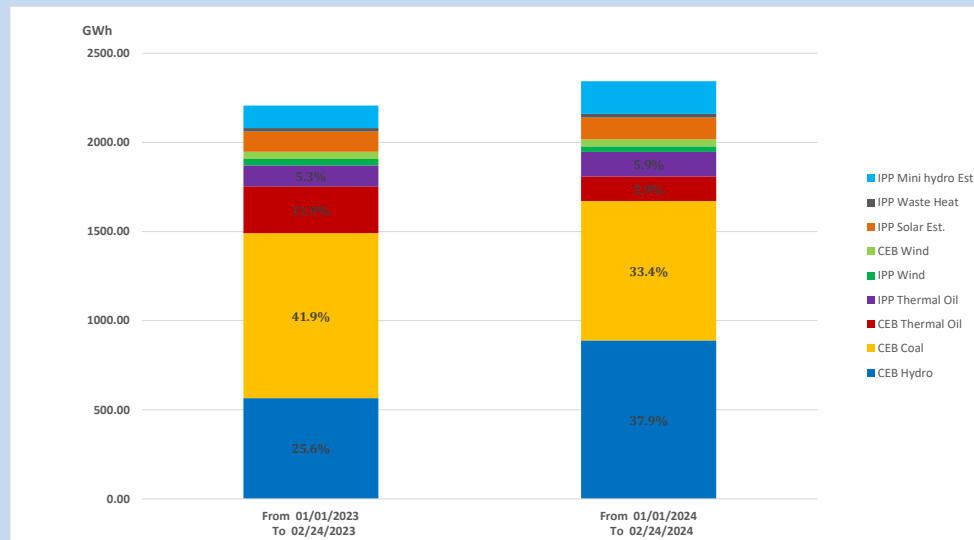
Solar Generation during

February 24, 2024

Based on Telemetered Power Stations only



15. Cumulative Dispatch Comparison with Last Year



Cumulative dispatch

From 01/01/2023 To 02/24/2023

2207 GWh

From 01/01/2024 To 02/24/2024

2343 GWh

The above figures are including contribution from roof top solar, non telemetered solar and mini hydro plants)

Unserviced energy due to power cuts has been excluded in 2023

Thermal Plant Fuel types

Table 08

Power Station	Primary Fuel
CEB Thermal	
Sapugaskanda 1	Heavy Fuel
Sapugaskanda 2	Heavy Fuel
Kelanitissa Small Gas Turbines	Auto Diesel
GT 7 - Kelanitissa	Auto Diesel
Kelanitissa CCY	Naphtha or Diesel
Lakvijaya 1	Coal
Lakvijaya 2	Coal
Lakvijaya 3	Coal
Uthuru Janani	Heavy Fuel
Barge CEB	Heavy Fuel
KCCPS -2	Auto Diesel

Power Station	Primary Fuel
Private Thermal	
West Coast	Auto Diesel / Heavy Fuel
ACE Matara	Heavy Fuel
ACE Embilipitiya	Heavy Fuel

Major Incidents reported during the day

February 24, 2024

- 1) WPS 132/33kV T/F 03 tripped only from the 33kV side along with 33kV F06 at 08:20hrs due to the operation of OC/EF protection. This caused 33kV B/S 02 and all connected feeders to be dead. The T/F, 33kV B/S, and all affected feeders except F06 were normalized by 08:37hrs.
- 2) Madampe - New Chilaw 132kV cct 02 tripped from both ends at 11:07hrs. The cct was normalized 16:39hrs.
- 3) LVPS unit 01 de-loaded to 210MW(Net.) at 20:00hrs due to a turbine casing drain leakage. The unit reached full load at 24:00hrs.