

Generation and Reservoirs Statistics

February 23, 2024



PUBLIC UTILITIES COMMISSION OF SRI LANKA

1. Daily Generation Mix in MWh

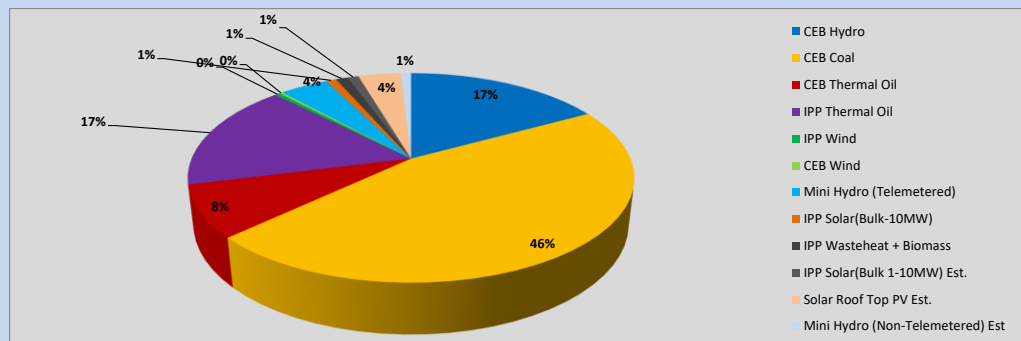


Table 01

	Generation (MWh)
CEB Hydro	6,790
CEB Coal	18,341
CEB Thermal Oil	3,207
IPP Thermal Oil	6,607
IPP Wind	180
CEB Wind	114
Mini Hydro (Telemetered)	1,664
IPP Solar (Bulk)	360
IPP Waste heat + Biomass	413
Total Generation (Excluding estimated figures)	37,676
* Estimated unserved energy	0
* Estimated Mini Hydro (Non telemetered)	355
* Estimated IPP Solar PV (Bulk 1-10MW)	380
* Estimated Solar Roof Top PV	1470
Total Generation (Including estimated figures)	39,881

* Estimated figures of CEB generation report

Table 02

	Installed Capacity (MW)
CEB Hydro	1644
CEB Coal	810
CEB Thermal Oil	773.1
IPP Thermal Oil (West Coast, ACE Matara and ACE Embilipitiya)	386.9
IPP Wind	163
CEB Wind	100
Mini Hydro	422
IPP Waste heat + Biomass	54
IPP Solar	137
Rooftop Solar (Ordinary)	293
Rooftop Solar (LT Bulk)	272
Rooftop Solar (HT Bulk)	74

Data Source - Monthly Review Report [Nov-2023]

2. Cumulative Dispatch

Following data excludes the contribution from roof top solar, non telemetered solar and mini hydro plants

Table 03 - Current Month

Category	Dispatch (GWh)	
CEB Hydro	249	24.77%
CEB Coal	440	43.81%
CEB Thermal Oil	77	7.64%
IPP Thermal	85	8.48%
SPP Wind	15	1.47%
CEB Wind	17	1.73%
Mini Hydro *	62	6.16%
IPP Solar *	50	4.96%
IPP Waste heat + BMP	9	0.94%
Total	1,004	

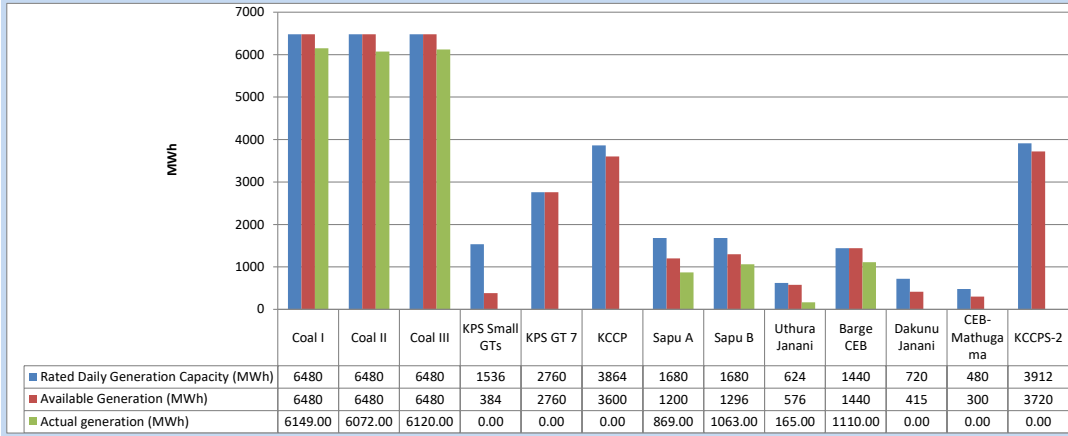
Table 04 - Current Year

Category	Dispatch (GWh)	
CEB Hydro	880	38.26%
CEB Coal	764	33.21%
CEB Thermal Oil	134	5.83%
IPP Thermal	131	5.69%
SPP Wind	31	1.36%
CEB Wind	39	1.71%
Mini Hydro *	181	7.87%
IPP Solar *	119	5.19%
IPP Waste heat	20	0.89%
Total	2,300	

*Including estimated contribution from non telemetered plants

3. CEB owned Thermal Plant Dispatch

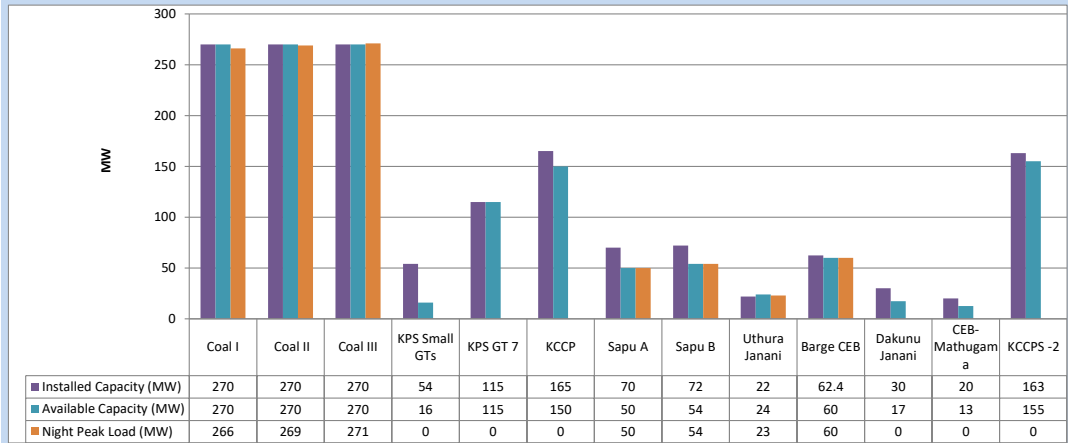
February 23, 2024



Available Generation is estimated based on plant availability at 6.00am on

February 24, 2024

4. CEB owned Thermal Plant Loading at the Night Peak

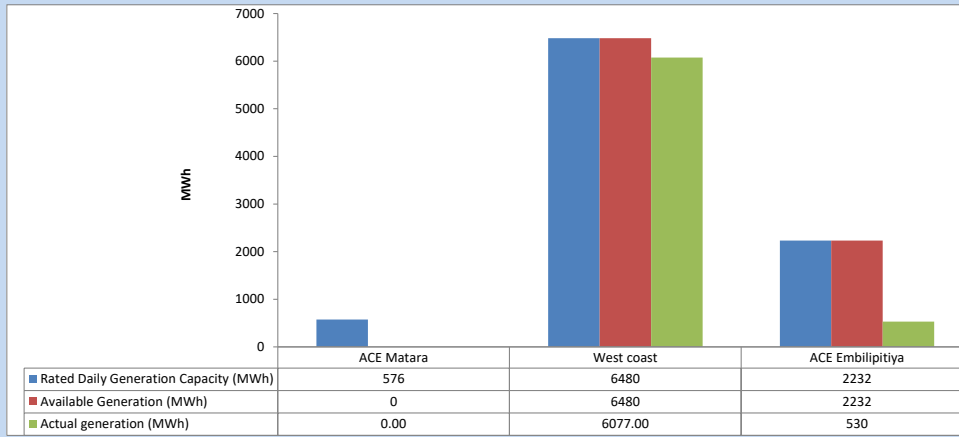


Plant availability is recorded at 6.00 am on

February 24, 2024

5. IPP owned Thermal Plant Dispatch

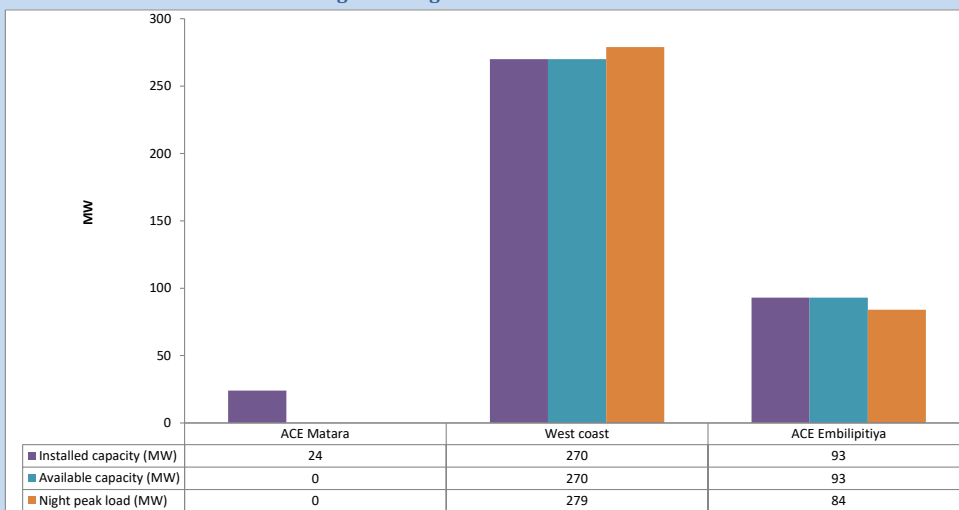
February 23, 2024



Available Generation is estimated based on plant availability at 6.00am on

February 24, 2024

6. IPP owned Thermal Plant Loading at the Night Peak

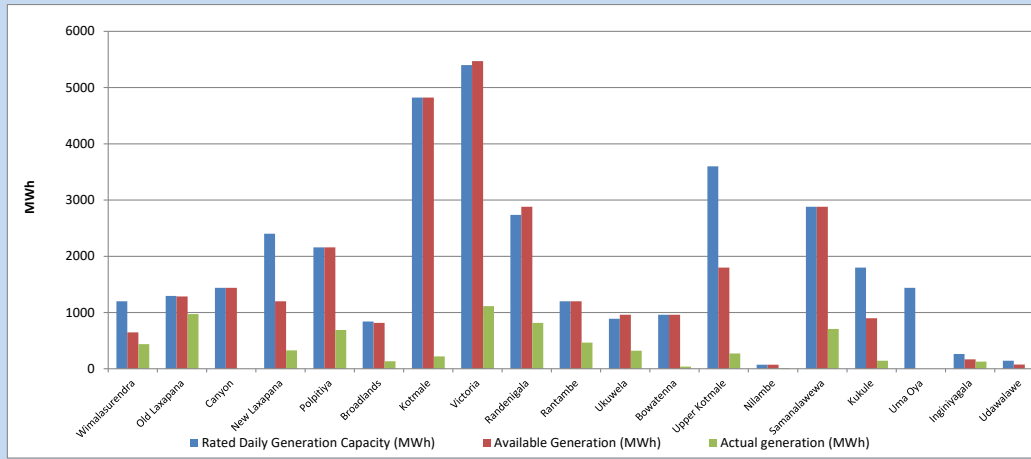


Plant availability is recorded at 6.00 am on

February 24, 2024

7. Major Hydro Plant Dispatch

February 23, 2024

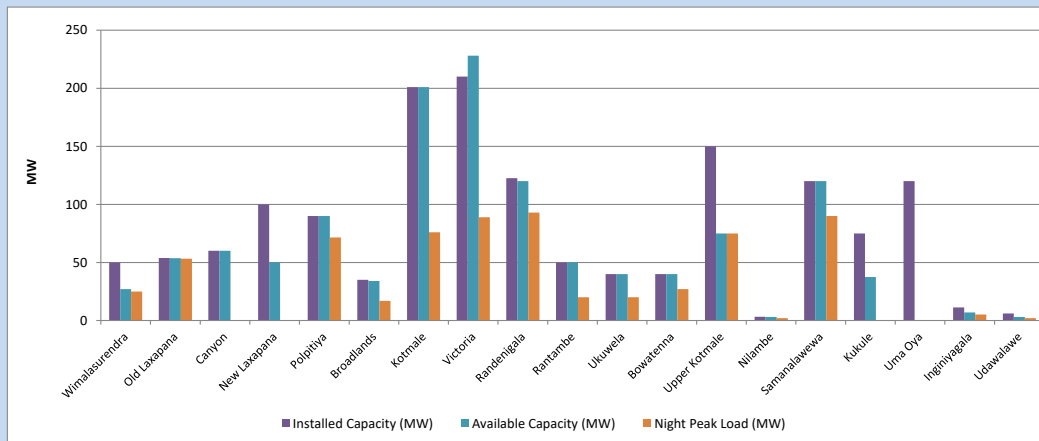


Available Generation is estimated based on plant availability at 6.00am on
Broadlands power plant is operating in the Commissioning Stage

February 24, 2024

8. Major Hydro Plant Loading at Night Peak

February 23, 2024



Plant availability is recorded at 6.00 am on
Broadlands power plant is operating in the Commissioning Stage

February 24, 2024

9. Summary of Major Plant performance

Table 05

Plant	Maximum Available Total Capacity	Plant Availability	Night peak Load	Plant Dispatch
	(MW)	(MW)	(MW)	(MWh)
Wimalasurendra	50	27	25	438
Old Laxapana	54	54	53	972
Canyon	60	60	0	0
New Laxapana	100	50	0	326
Polpitiya	90	90	72	690
Broadlands	35	34	17	134
Kotmale	201	201	76	220
Victoria	210	228	89	1,113
Randenigala	123	120	93	816
Rantambe	50	50	20	465
Ukuwela	40	40	20	320
Bowatenna	40	40	27	39
Upper Kotmale	150	75	75	271
Nilambe	3	3	2	10
Samanalawewa	120	120	90	708
Kukule	75	38	0	142
Uma Oya (Testing)	120	0	0	0
Inginiyagala	11	7	5	127
Udawalawe	6	3	2	0
Puttalam Coal I	270	270	266	6,149
Puttalam Coal II	270	270	269	6,072
Puttalam Coal III	270	270	271	6,120
KPS Small GTs	54	16	0	0
KPS GT 7	115	115	0	0
KCCP	165	150	0	0
Sapugaskanda A	70	50	50	869
Sapugaskanda B	72	54	54	1,063
Uthura Janani	22	24	23	165
Barge CEB	62	60	60	1,110
CEB-Hambantota	30	17	0	0
CEB-Mathugama	20	13	0	0
ACE Matara	24	0	0	0
Asia Power	50	0	0	0
KCCPS -2	163	155	0	0
West Coast	270	270	279	6,077
Nothern Power	36	0	0	0
ACE Embilipitiya	93	93	84	530
Total	3,594	3,066	2,136	37,677

Note-

Plant availability is the availability recorded at 6 am on

February 24, 2024

Installed Capacity is sourced from CEB Annual Report- 2022

10. Contribution to the Night Peak in MW

February 23, 2024

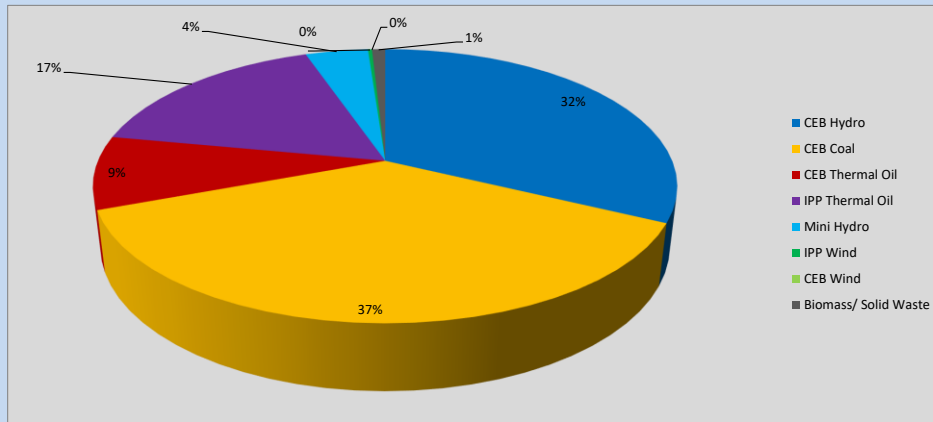


Table 06

CEB Hydro	696	MW
CEB Coal	806	MW
CEB Thermal Oil	187	MW
IPP Thermal Oil	363	MW
Mini Hydro (Telemetered)	90	MW
IPP Wind	5.8	MW
CEB Wind	0	MW
Biomass/ Solid Waste	19	MW

Recorded Peak Demand Data

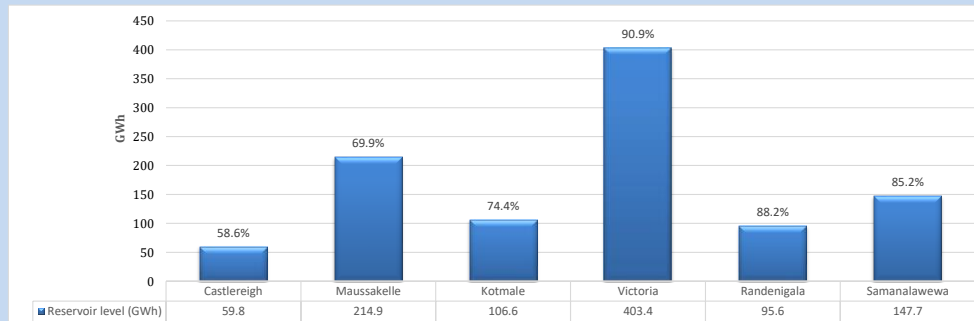
Table 07

Night Peak*	2,167	MW
Day Peak Maximum Demand	1,663	MW
Day Peak Minimum Demand	1,350	MW
Off Peak Minimum Demand	1,359	MW

Above figures are excluding contribution from roof top solar, non telemetered solar and mini hydro plants

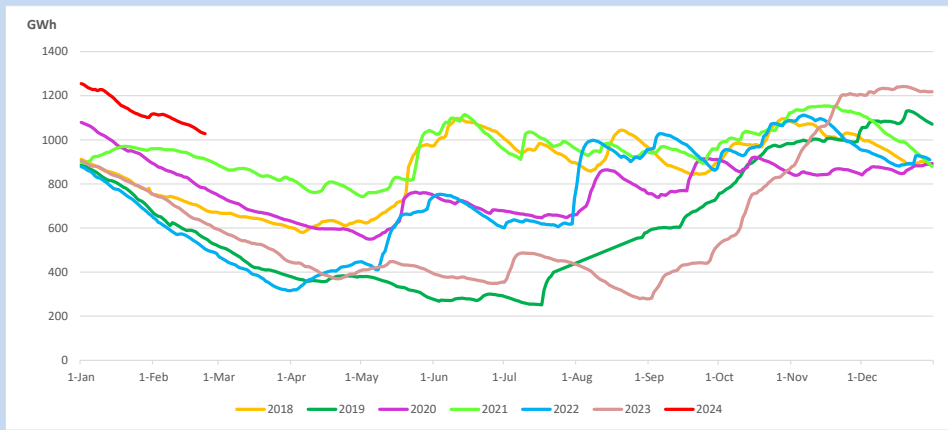
Reservoir Levels -

as at 06.00 Hr on February 24, 2024

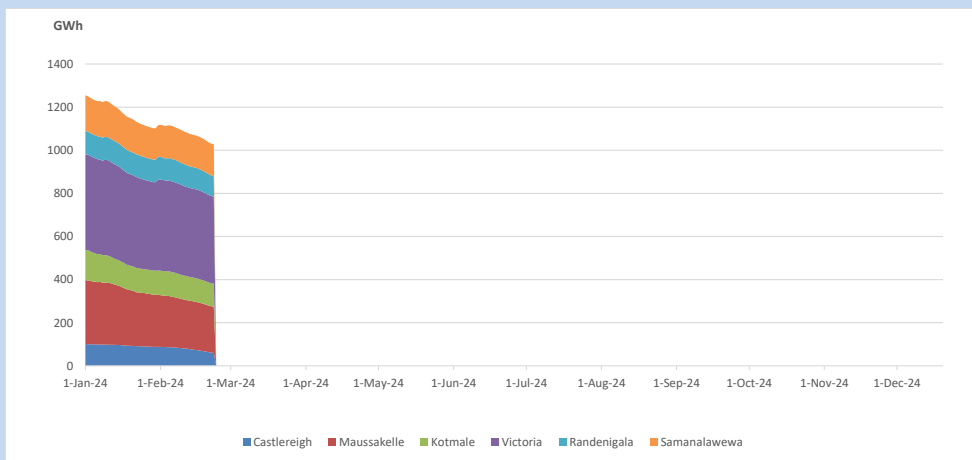


Total Reservoir Level 1028 GWh
% of Total capacity 80.4%

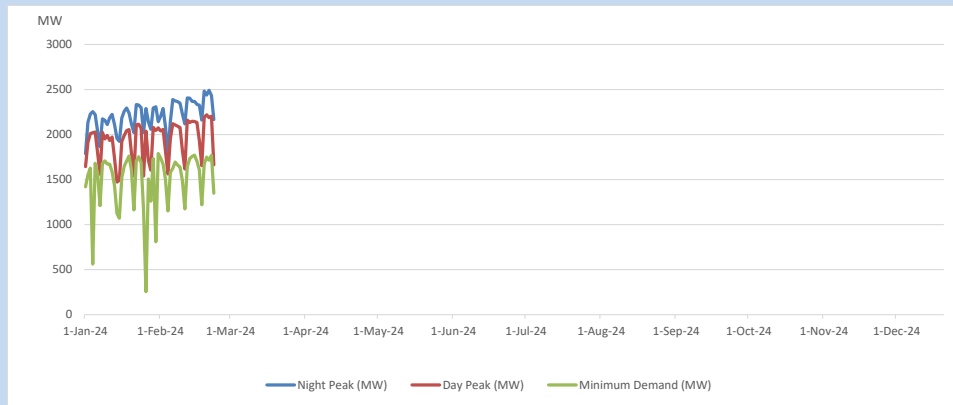
11. Comparison of Total Reservoir Storage Levels with Past Years



12. Variation of Major Hydro Reservoir Levels in the current year (GWh)



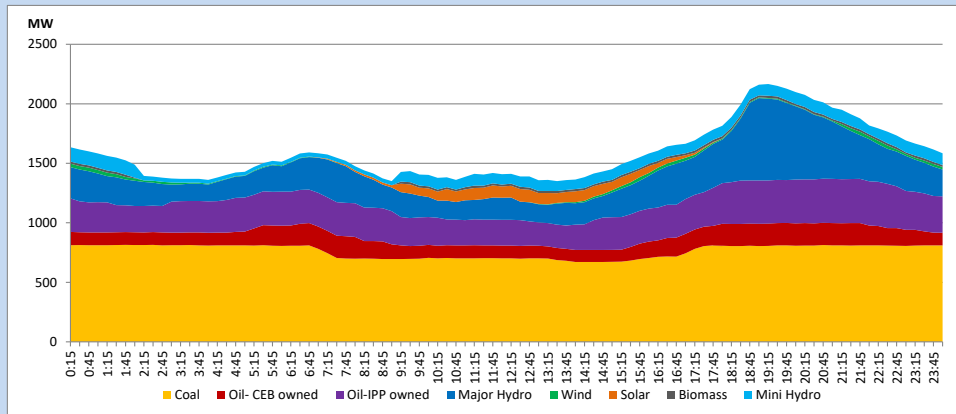
13. Variation of Demand during the current year



The above figures are excluding contribution from roof top solar, non telemetered solar and mini hydro plants

14. Daily Load Curve

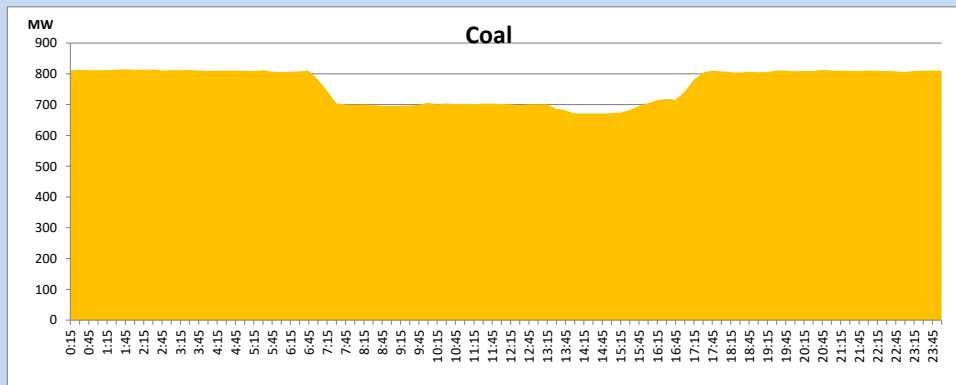
February 23, 2024



Solar and wind data is based on Telemetered Power Stations only

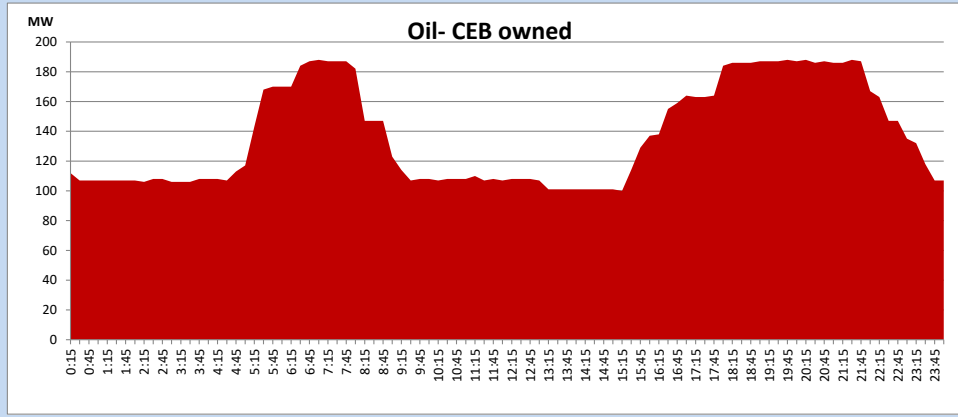
Coal Generation during

February 23, 2024



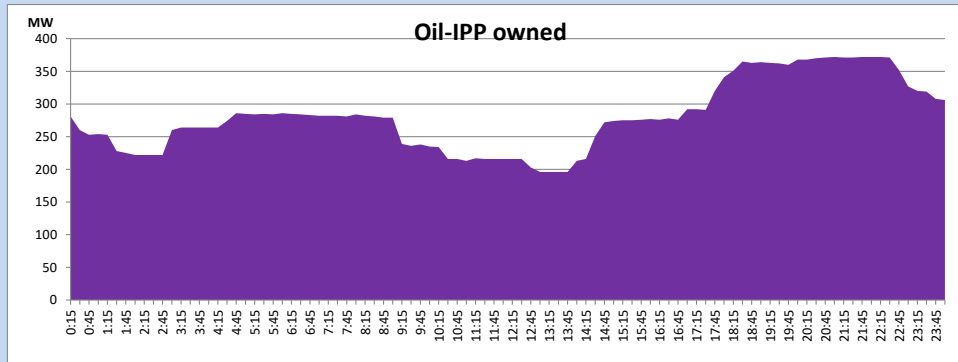
CEB Oil Plant Generation during

February 23, 2024



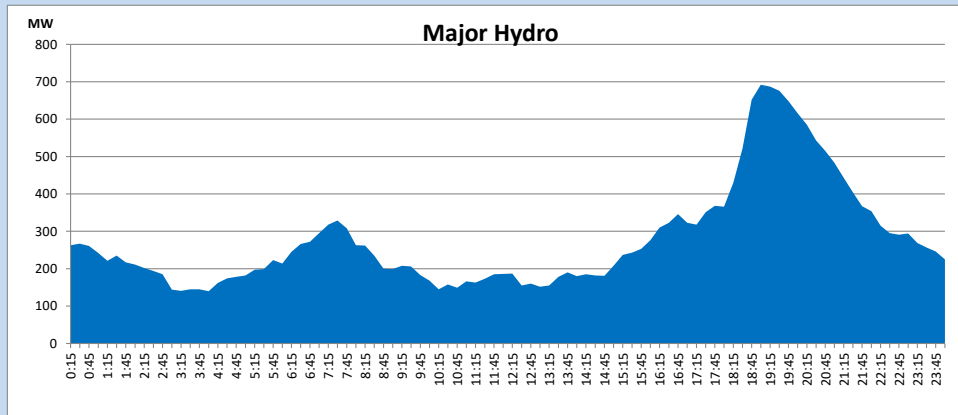
IPP Oil Plant Generation during

February 23, 2024



Major Hydro Generation during

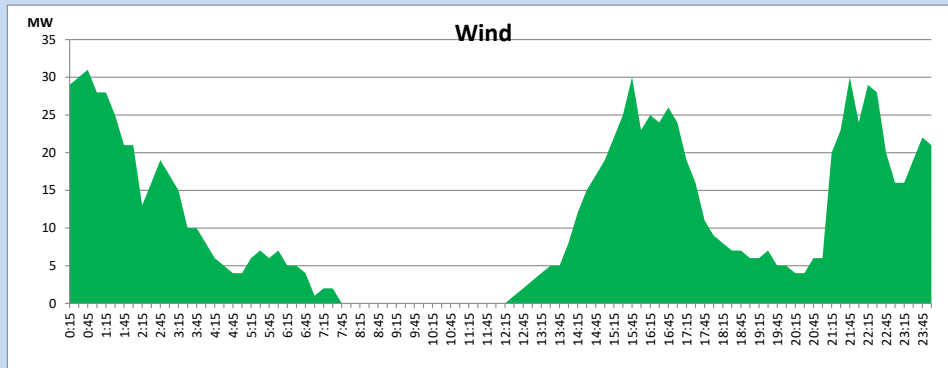
February 23, 2024



Wind Generation during

February 23, 2024

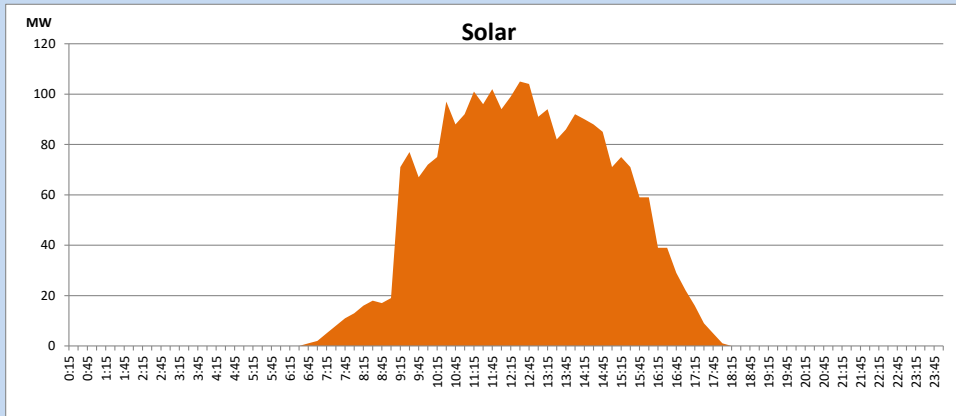
Based on Telemetered Power Stations only



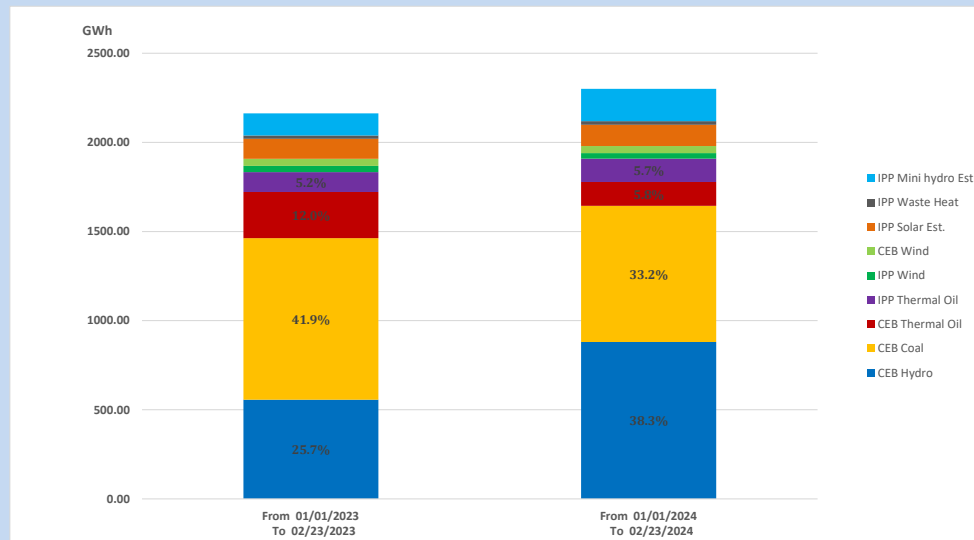
Solar Generation during

February 23, 2024

Based on Telemetered Power Stations only



15. Cumulative Dispatch Comparison with Last Year



Cumulative dispatch
 From 01/01/2023 To 02/23/2023
 From 01/01/2024 To 02/23/2024

2163 GWh
 2300 GWh

The above figures are including contribution from roof top solar, non telemetered solar and mini hydro plants)
 Unserviced energy due to power cuts has been excluded in 2023

Thermal Plant Fuel types

Table 08

Power Station	Primary Fuel
CEB Thermal	
Sapugaskanda 1	Heavy Fuel
Sapugaskanda 2	Heavy Fuel
Kelanitissa Small Gas Turbines	Auto Diesel
GT 7 - Kelanitissa	Auto Diesel
Kelanitissa CCY	Naphtha or Diesel
Lakvijaya 1	Coal
Lakvijaya 2	Coal
Lakvijaya 3	Coal
Uthuru Janani	Heavy Fuel
Barge CEB	Heavy Fuel
KCCPS -2	Auto Diesel

Power Station	Primary Fuel
Private Thermal	
West Coast	Auto Diesel / Heavy Fuel
ACE Matara	Heavy Fuel
ACE Embilipitiya	Heavy Fuel

Major Incidents reported during the day

February 23, 2024

- 1) WPS 132/33kV T/F 03 tripped only from the 33kV side along with 33kV F06 at 21:40hrs due to the operation of OC/EF protection. This caused 33kV B/S 02 and all connected feeders to be dead. The T/F, 33kV B/S, and all affected feeders except F06 were normalized by 22:47hrs.
- 2) New Anuradhapura - Trico 132kV cct tripped & A/R from both ends at 05:40hrs (24.02.2024) due to the operation of differential protection.