

Generation and Reservoirs Statistics

February 22, 2024



PUBLIC UTILITIES COMMISSION OF SRI LANKA

1. Daily Generation Mix in MWh

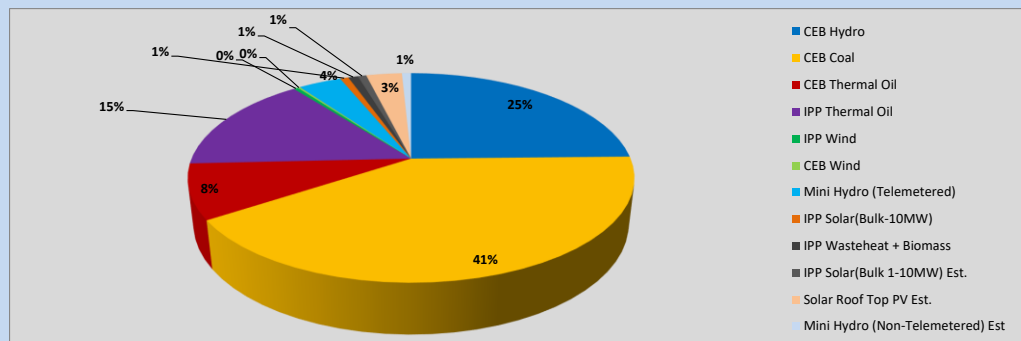


Table 01

	Generation (MWh)
CEB Hydro	11,736
CEB Coal	19,530
CEB Thermal Oil	4,032
IPP Thermal Oil	7,248
IPP Wind	182
CEB Wind	99
Mini Hydro (Telemetered)	1,771
IPP Solar (Bulk)	344
IPP Waste heat + Biomass	402
Total Generation (Excluding estimated figures)	45,344
* Estimated unserved energy	0
* Estimated Mini Hydro (Non telemetered)	377
* Estimated IPP Solar PV (Bulk 1-10MW)	350
* Estimated Solar Roof Top PV	1470
Total Generation (Including estimated figures)	47,541

* Estimated figures of CEB generation report

Table 02

	Installed Capacity (MW)
CEB Hydro	1644
CEB Coal	810
CEB Thermal Oil	773.1
IPP Thermal Oil (West Coast, ACE Matara and ACE Embilipitiya)	386.9
IPP Wind	163
CEB Wind	100
Mini Hydro	422
IPP Waste heat + Biomass	54
IPP Solar	137
Rooftop Solar (Ordinary)	293
Rooftop Solar (LT Bulk)	272
Rooftop Solar (HT Bulk)	74

Data Source - Monthly Review Report [Nov-2023]

2. Cumulative Dispatch

Following data excludes the contribution from roof top solar, non telemetered solar and mini hydro plants

Table 03 - Current Month

Category	Dispatch (GWh)	
CEB Hydro	242	25.09%
CEB Coal	422	43.71%
CEB Thermal Oil	73	7.62%
IPP Thermal	79	8.14%
SPP Wind	15	1.51%
CEB Wind	17	1.79%
Mini Hydro *	60	6.21%
IPP Solar *	48	4.94%
IPP Waste heat + BMP	9	0.94%
Total	964	

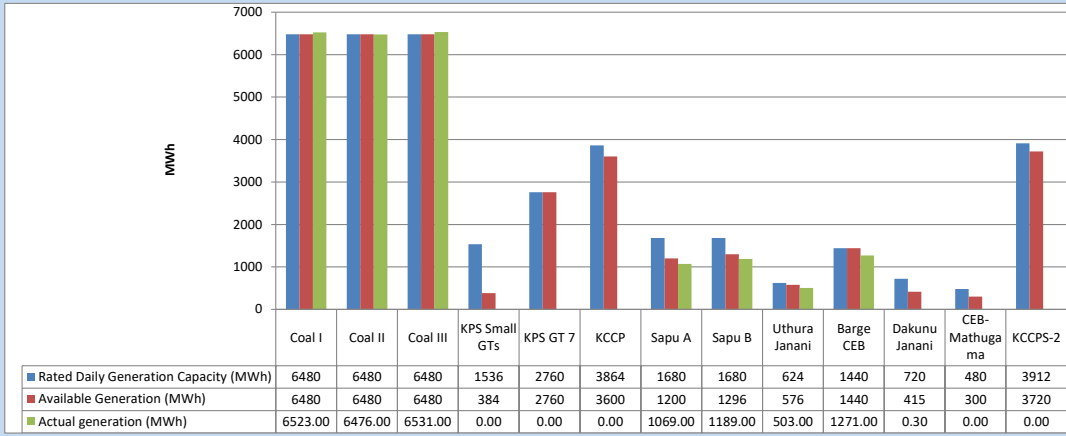
Table 04 - Current Year

Category	Dispatch (GWh)	
CEB Hydro	873	38.63%
CEB Coal	746	32.98%
CEB Thermal Oil	131	5.79%
IPP Thermal	124	5.50%
SPP Wind	31	1.38%
CEB Wind	39	1.73%
Mini Hydro *	179	7.92%
IPP Solar *	117	5.18%
IPP Waste heat	20	0.89%
Total	2,260	

*Including estimated contribution from non telemetered plants

3. CEB owned Thermal Plant Dispatch

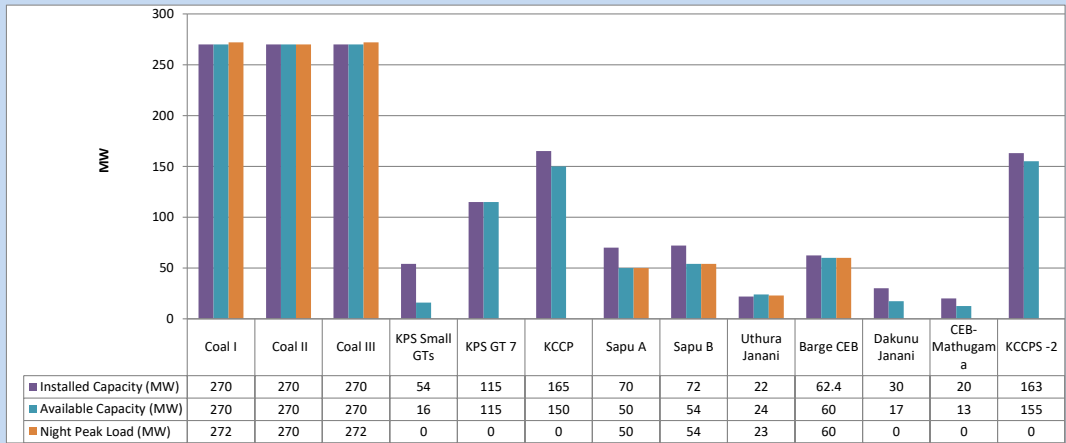
February 22, 2024



Available Generation is estimated based on plant availability at 6.00am on

February 23, 2024

4. CEB owned Thermal Plant Loading at the Night Peak

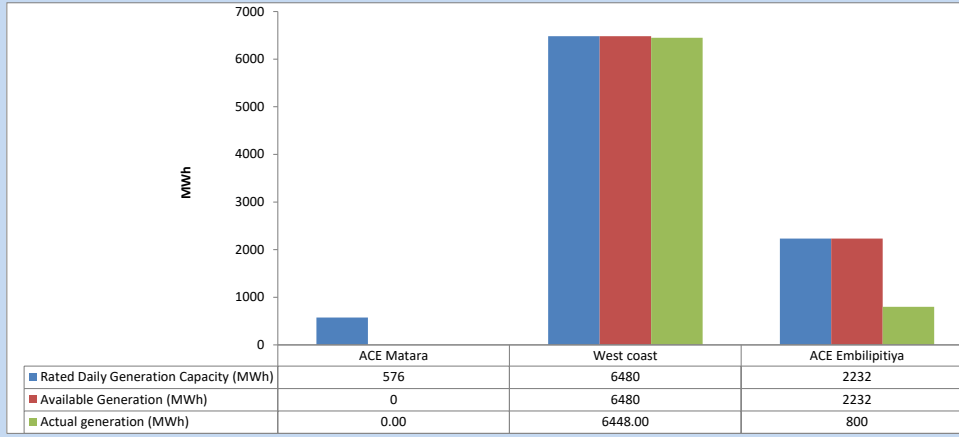


Plant availability is recorded at 6.00 am on

February 23, 2024

5. IPP owned Thermal Plant Dispatch

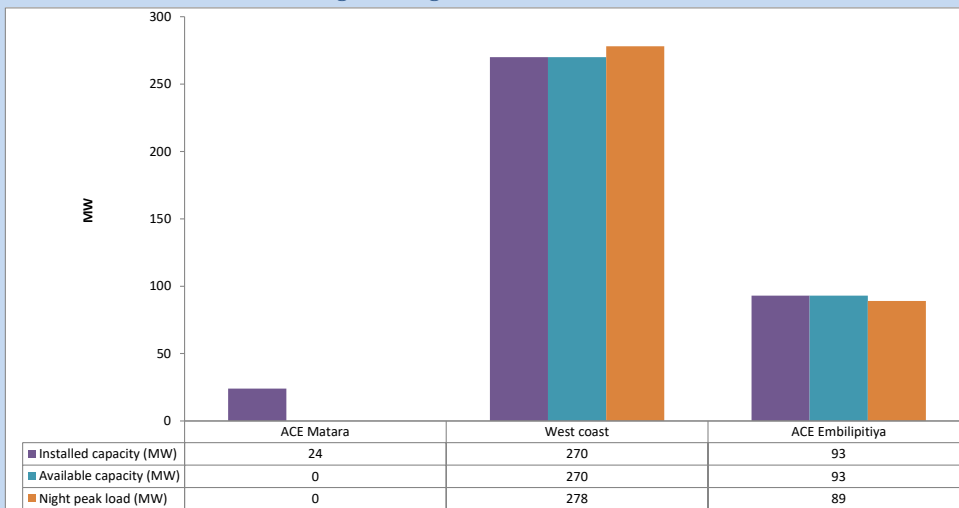
February 22, 2024



Available Generation is estimated based on plant availability at 6.00am on

February 23, 2024

6. IPP owned Thermal Plant Loading at the Night Peak

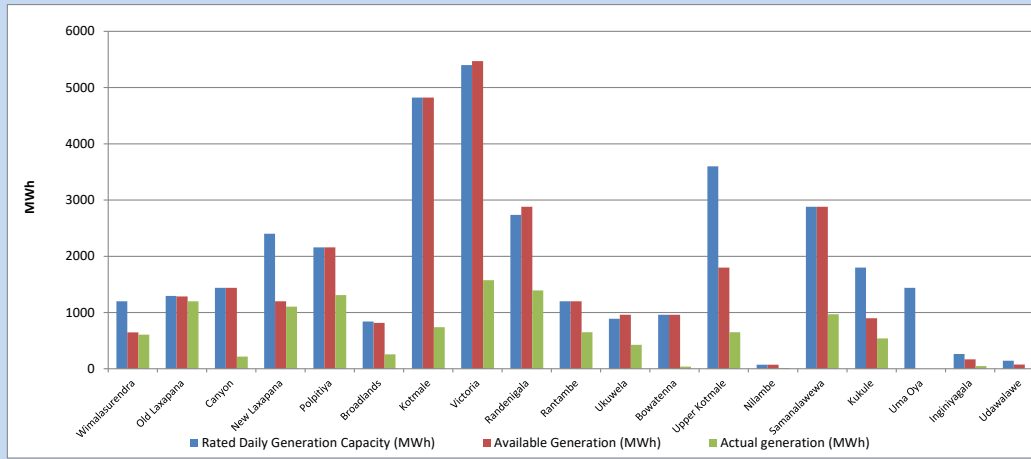


Plant availability is recorded at 6.00 am on

February 23, 2024

7. Major Hydro Plant Dispatch

February 22, 2024

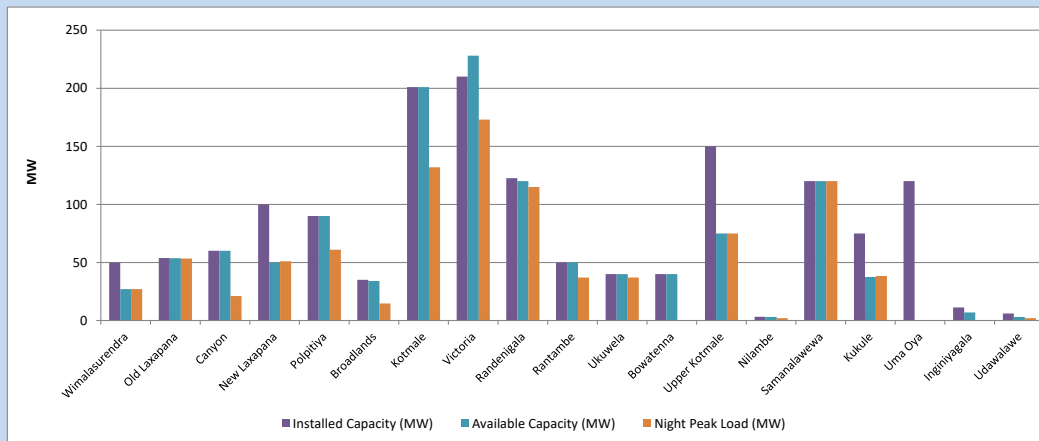


Available Generation is estimated based on plant availability at 6.00am on
Broadlands power plant is operating in the Commissioning Stage

February 23, 2024

8. Major Hydro Plant Loading at Night Peak

February 22, 2024



Plant availability is recorded at 6.00 am on
Broadlands power plant is operating in the Commissioning Stage

February 23, 2024

9. Summary of Major Plant performance

Table 05

Plant	Maximum Available Total Capacity	Plant Availability	Night peak Load	Plant Dispatch
	(MW)	(MW)	(MW)	(MWh)
Wimalasurendra	50	27	27	606
Old Laxapana	54	54	53	1,201
Canyon	60	60	21	218
New Laxapana	100	50	51	1,106
Polpitiya	90	90	61	1,310
Broadlands	35	34	15	256
Kotmale	201	201	132	740
Victoria	210	228	173	1,574
Randenigala	123	120	115	1,394
Rantambe	50	50	37	649
Ukuwela	40	40	37	426
Bowatenna	40	40	0	37
Upper Kotmale	150	75	75	649
Nilambe	3	3	2	13
Samanalawewa	120	120	120	970
Kukule	75	38	38	540
Uma Oya (Testing)	120	0	0	0
Inginiyagala	11	7	0	47
Udawalawe	6	3	2	0
Puttalam Coal I	270	270	272	6,523
Puttalam Coal II	270	270	270	6,476
Puttalam Coal III	270	270	272	6,531
KPS Small GTs	54	16	0	0
KPS GT 7	115	115	0	0
KCCP	165	150	0	0
Sapugaskanda A	70	50	50	1,069
Sapugaskanda B	72	54	54	1,189
Uthura Janani	22	24	23	503
Barge CEB	62	60	60	1,271
CEB-Hambantota	30	17	0	0
CEB-Mathugama	20	13	0	0
ACE Matara	24	0	0	0
Asia Power	50	0	0	0
KCCPS -2	163	155	0	0
West Coast	270	270	278	6,448
Nothern Power	36	0	0	0
ACE Embilipitiya	93	93	89	800
Total	3,594	3,066	2,419	45,344

Note-

Plant availability is the availability recorded at 6 am on

February 23, 2024

Installed Capacity is sourced from CEB Annual Report- 2022

10. Contribution to the Night Peak in MW

February 22, 2024

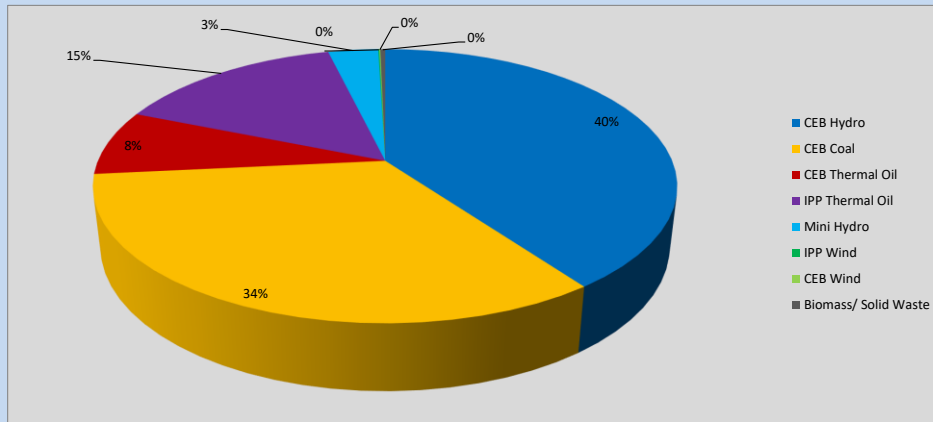


Table 06

CEB Hydro	972	MW
CEB Coal	814	MW
CEB Thermal Oil	187	MW
IPP Thermal Oil	367	MW
Mini Hydro (Telemetered)	81	MW
IPP Wind	1.8	MW
CEB Wind	1.5	MW
Biomass/ Solid Waste	8	MW

Recorded Peak Demand Data

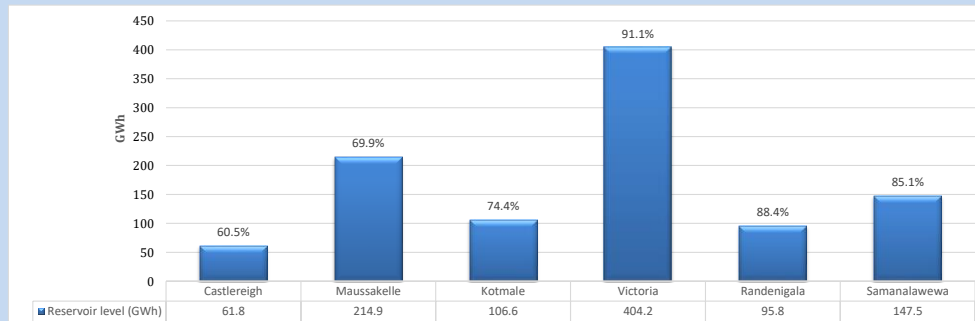
Table 07

Night Peak*	2,432	MW
Day Peak Maximum Demand	2,204	MW
Day Peak Minimum Demand	1,770	MW
Off Peak Minimum Demand	1,470	MW

Above figures are excluding contribution from roof top solar, non telemetered solar and mini hydro plants

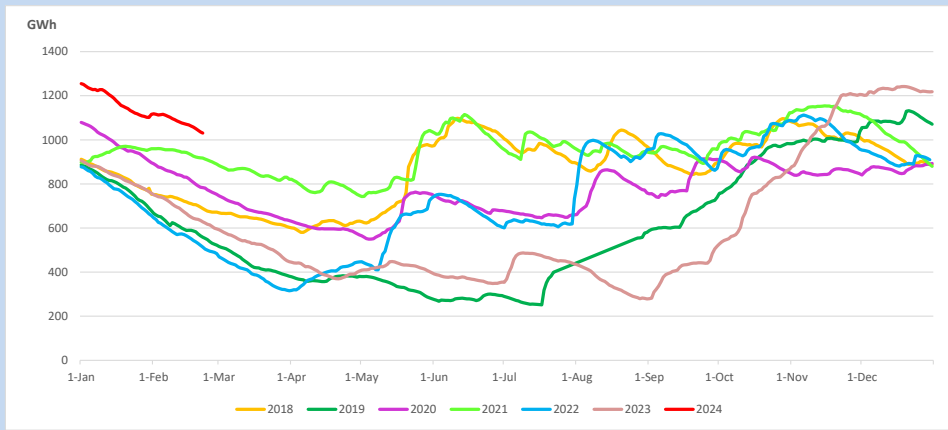
Reservoir Levels -

as at 06.00 Hr on February 23, 2024

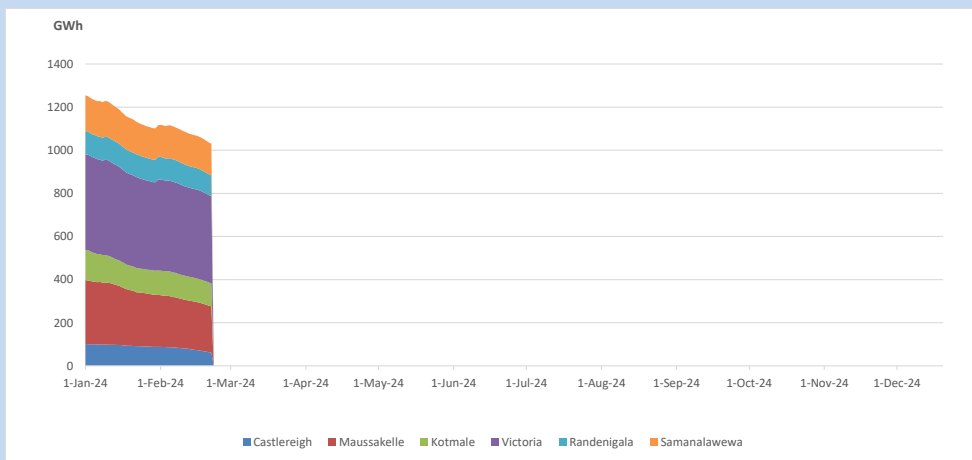


Total Reservoir Level 1030.8 GWh
% of Total capacity 80.6%

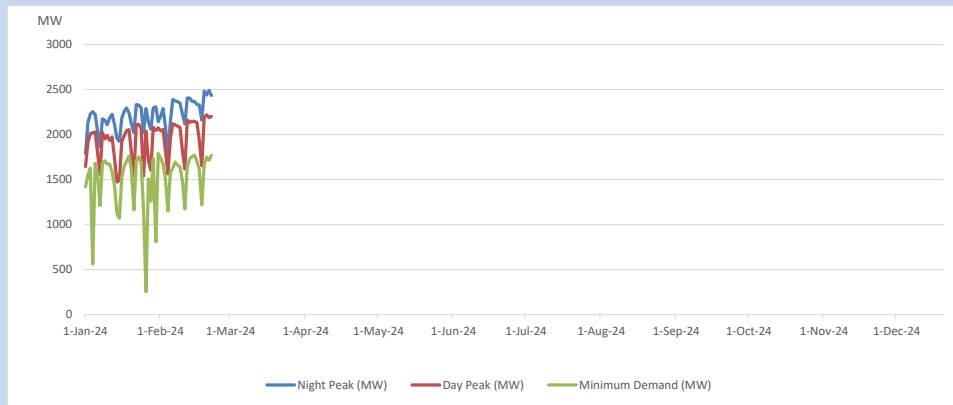
11. Comparison of Total Reservoir Storage Levels with Past Years



12. Variation of Major Hydro Reservoir Levels in the current year (GWh)



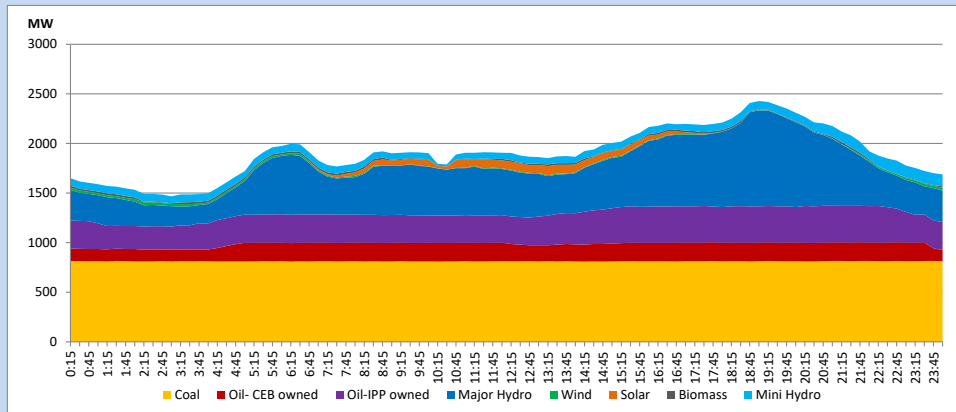
13. Variation of Demand during the current year



The above figures are excluding contribution from roof top solar, non telemetered solar and mini hydro plants

14. Daily Load Curve

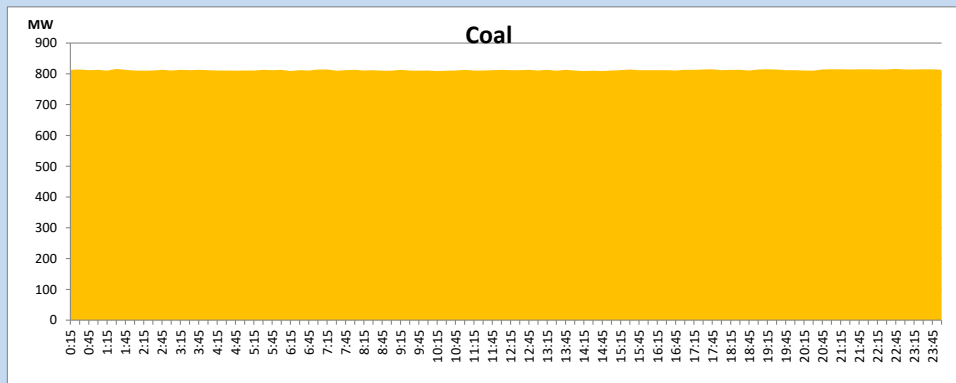
February 22, 2024



Solar and wind data is based on Telemetered Power Stations only

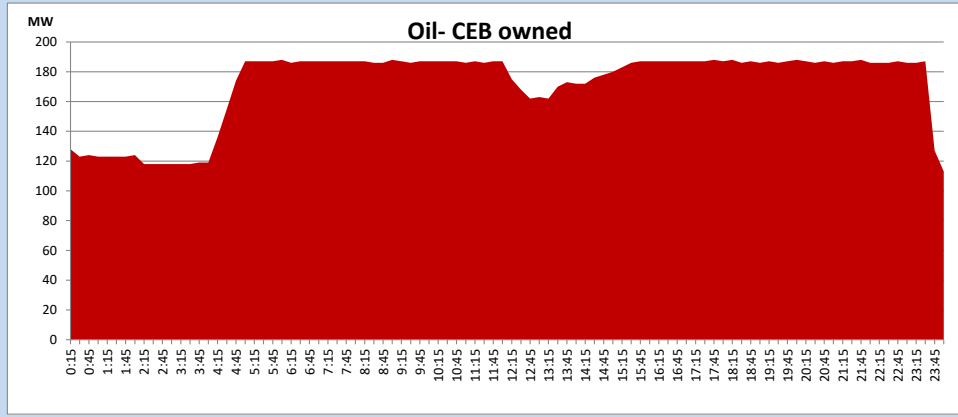
Coal Generation during

February 22, 2024



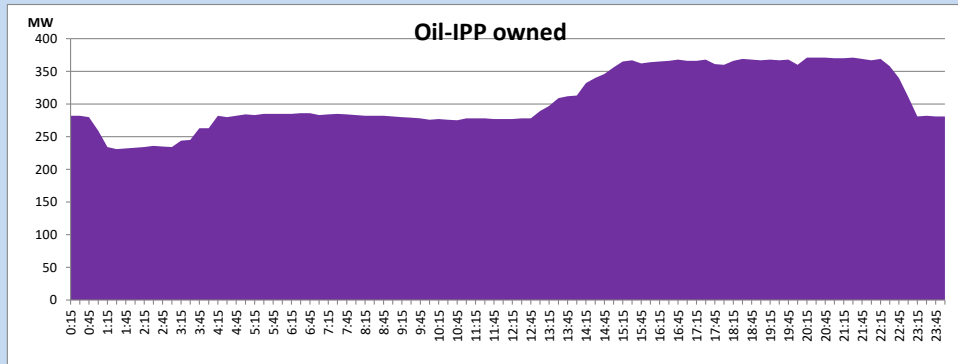
CEB Oil Plant Generation during

February 22, 2024



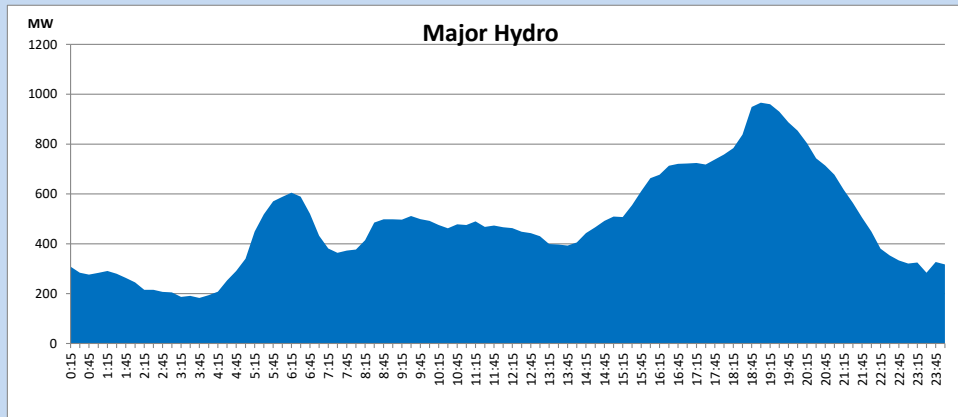
IPP Oil Plant Generation during

February 22, 2024



Major Hydro Generation during

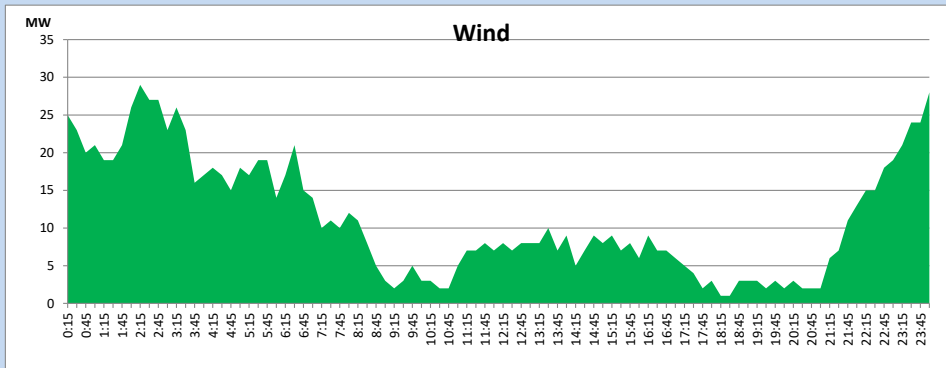
February 22, 2024



Wind Generation during

February 22, 2024

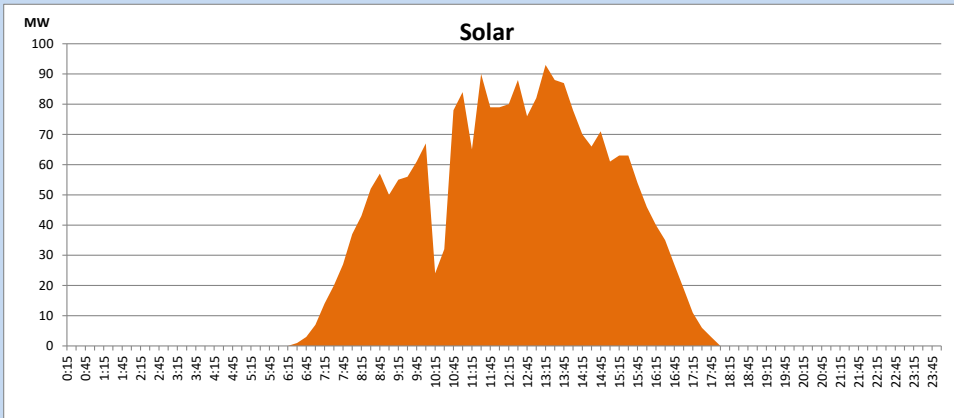
Based on Telemetered Power Stations only



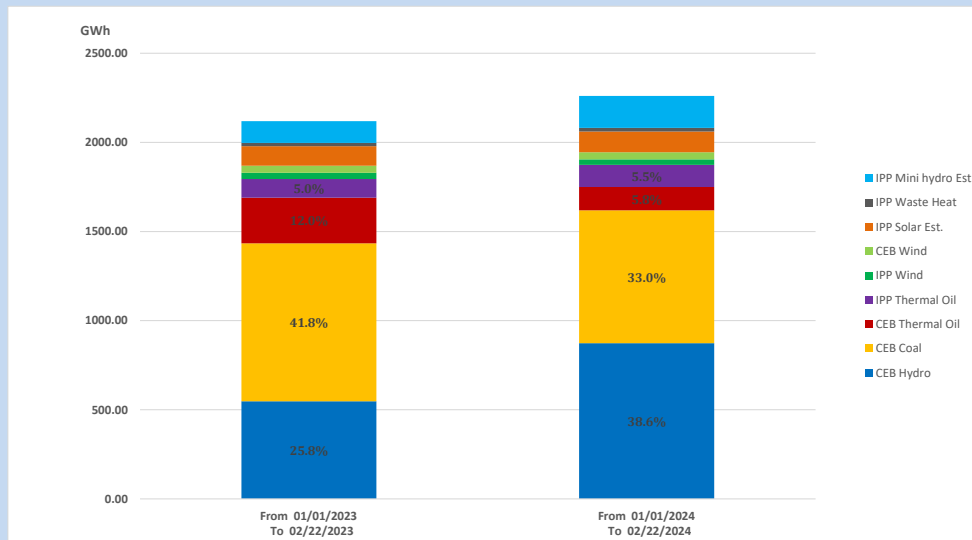
Solar Generation during

February 22, 2024

Based on Telemetered Power Stations only



15. Cumulative Dispatch Comparison with Last Year



Cumulative dispatch
From 01/01/2023 To 02/22/2023
From 01/01/2024 To 02/22/2024

2120 GWh
2260 GWh

The above figures are including contribution from roof top solar, non telemetered solar and mini hydro plants)
Unserviced energy due to power cuts has been excluded in 2023

Thermal Plant Fuel types

Table 08

Power Station	Primary Fuel
CEB Thermal	
Sapugaskanda 1	Heavy Fuel
Sapugaskanda 2	Heavy Fuel
Kelanitissa Small Gas Turbines	Auto Diesel
GT 7 - Kelanitissa	Auto Diesel
Kelanitissa CCY	Naphtha or Diesel
Lakvijaya 1	Coal
Lakvijaya 2	Coal
Lakvijaya 3	Coal
Uthuru Janani	Heavy Fuel
Barge CEB	Heavy Fuel
KCCPS -2	Auto Diesel

Power Station	Primary Fuel
Private Thermal	
West Coast	Auto Diesel / Heavy Fuel
ACE Matara	Heavy Fuel
ACE Embilipitiya	Heavy Fuel

Major Incidents reported during the day

February 22, 2024

1) Ukuwela GSS 132/33kV T/F 03 which tripped on 20.02.2024, was normalized at 11:19hrs.

2) WPS 132/33kV T/F 03 tripped only from the 33kV side along with 33kV F07 at 04:46hrs(23.02.2024) due to the operation of E/F protection. This caused 33kV B/S 02 and all connected feeders to be dead. The T/F, 33kV B/S, and all affected feeders except F07 were normalized by 05:02hrs (23.02.2024).