

Generation and Reservoirs Statistics

February 18, 2024



PUBLIC UTILITIES COMMISSION OF SRI LANKA

1. Daily Generation Mix in MWh

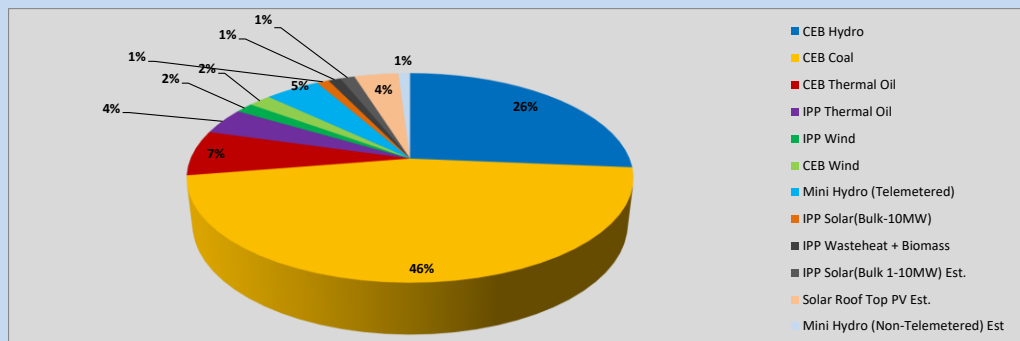


Table 01

	Generation (MWh)
CEB Hydro	10,139
CEB Coal	17,736
CEB Thermal Oil	2,692
IPP Thermal Oil	1,581
IPP Wind	596
CEB Wind	753
Mini Hydro (Telemetered)	1,831
IPP Solar (Bulk)	401
IPP Waste heat + Biomass	414
Total Generation (Excluding estimated figures)	36,143
* Estimated unserved energy	0
* Estimated Mini Hydro (Non telemetered)	390
* Estimated IPP Solar PV (Bulk 1-10MW)	481
* Estimated Solar Roof Top PV	1470
Total Generation (Including estimated figures)	38,484

* Estimated figures of CEB generation report

Table 02

	Installed Capacity (MW)
CEB Hydro	1644
CEB Coal	810
CEB Thermal Oil	773.1
IPP Thermal Oil (West Coast, ACE Matara and ACE Embilipitiya)	386.9
IPP Wind	163
CEB Wind	100
Mini Hydro	422
IPP Waste heat + Biomass	54
IPP Solar	137
Rooftop Solar (Ordinary)	293
Rooftop Solar (LT Bulk)	272
Rooftop Solar (HT Bulk)	74

Data Source - Monthly Review Report [Aug-2023]

2. Cumulative Dispatch

Following data excludes the contribution from roof top solar, non telemetered solar and mini hydro plants

Table 03 - Current Month

Category	Dispatch (GWh)	
CEB Hydro	196	25.27%
CEB Coal	344	44.21%
CEB Thermal Oil	58	7.43%
IPP Thermal	52	6.69%
SPP Wind	13	1.65%
CEB Wind	16	2.02%
Mini Hydro *	52	6.70%
IPP Solar *	39	5.01%
IPP Waste heat + BMP	8	1.02%
Total	777	

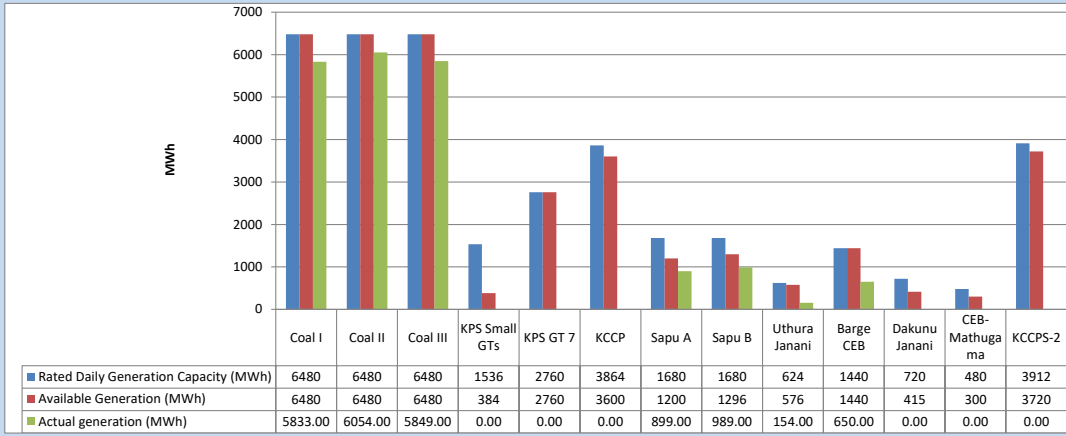
Table 04 - Current Year

Category	Dispatch (GWh)	
CEB Hydro	828	39.92%
CEB Coal	668	32.19%
CEB Thermal Oil	115	5.56%
IPP Thermal	98	4.71%
SPP Wind	29	1.42%
CEB Wind	38	1.81%
Mini Hydro *	171	8.25%
IPP Solar *	108	5.23%
IPP Waste heat	19	0.91%
Total	2,074	

*Including estimated contribution from non telemetered plants

3. CEB owned Thermal Plant Dispatch

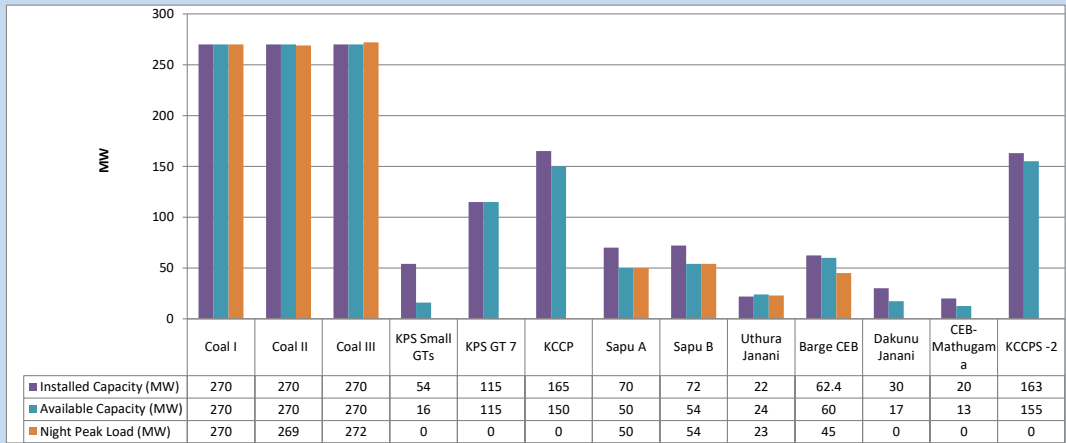
February 18, 2024



Available Generation is estimated based on plant availability at 6.00am on

February 19, 2024

4. CEB owned Thermal Plant Loading at the Night Peak

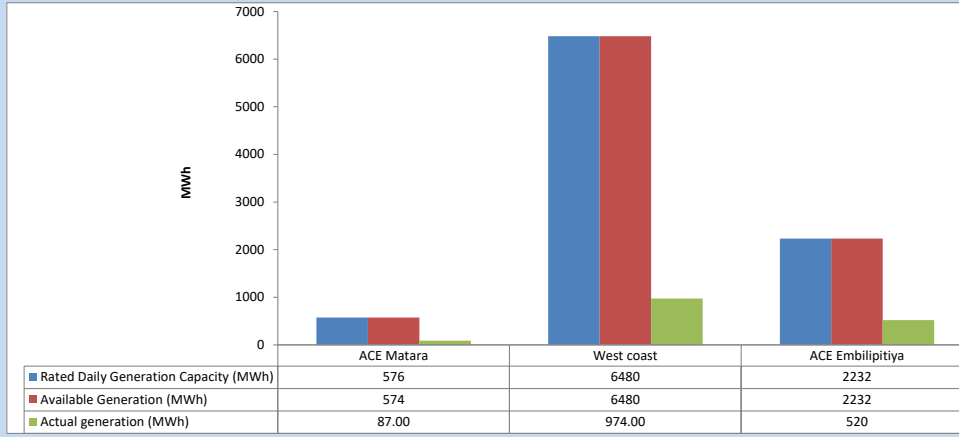


Plant availability is recorded at 6.00 am on

February 19, 2024

5. IPP owned Thermal Plant Dispatch

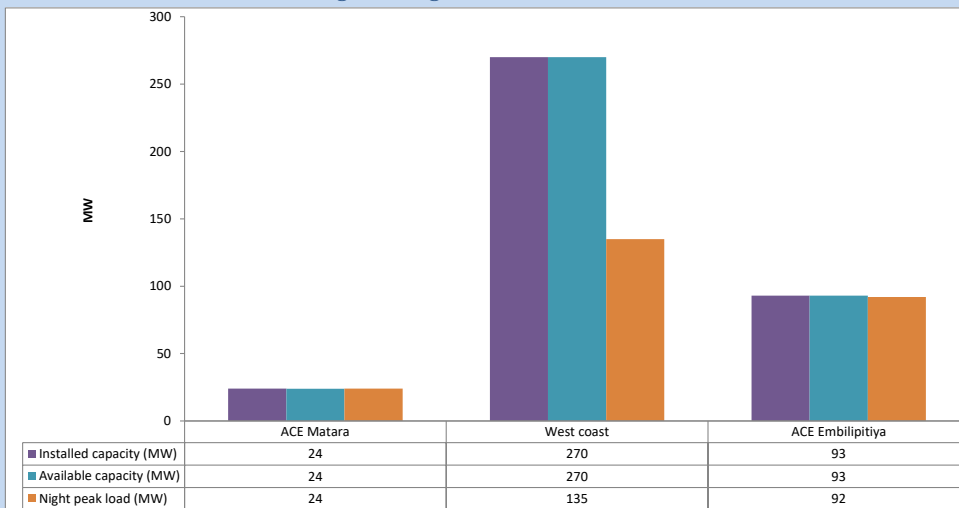
February 18, 2024



Available Generation is estimated based on plant availability at 6.00am on

February 19, 2024

6. IPP owned Thermal Plant Loading at the Night Peak

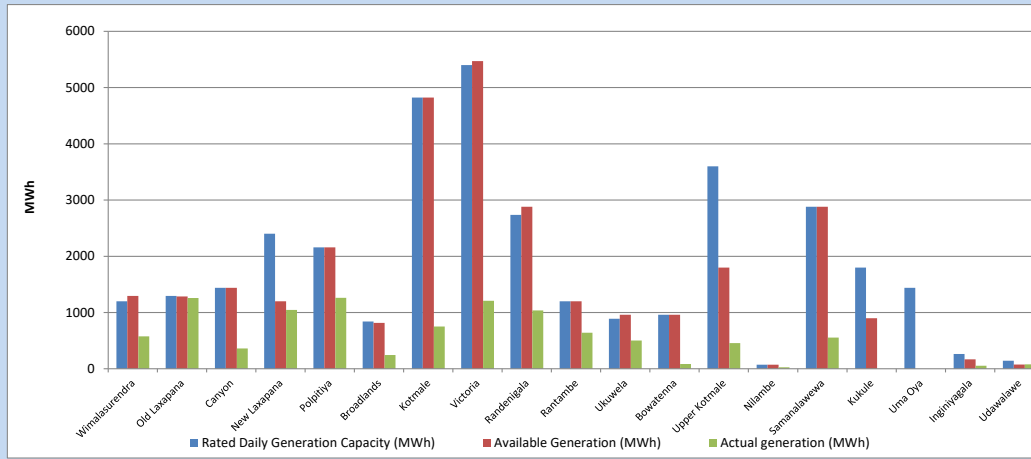


Plant availability is recorded at 6.00 am on

February 19, 2024

7. Major Hydro Plant Dispatch

February 18, 2024

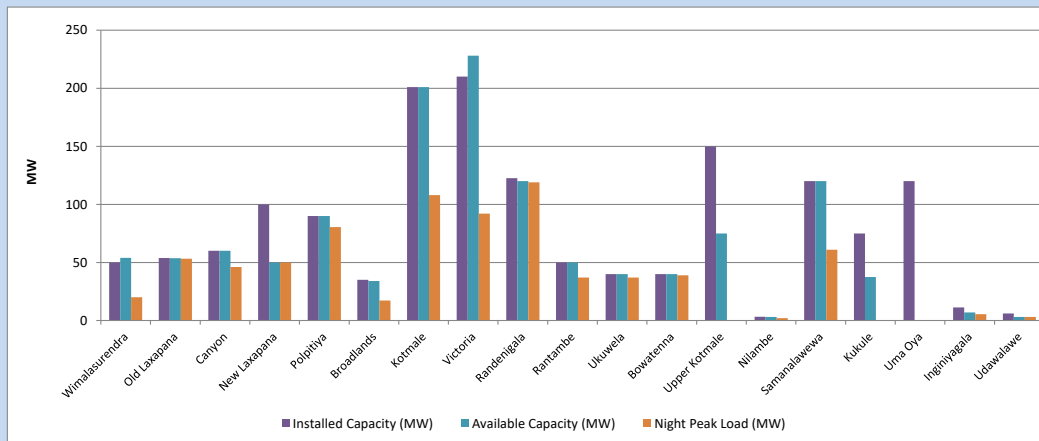


Available Generation is estimated based on plant availability at 6.00am on
Broadlands power plant is operating in the Commissioning Stage

February 19, 2024

8. Major Hydro Plant Loading at Night Peak

February 18, 2024



Plant availability is recorded at 6.00 am on
Broadlands power plant is operating in the Commissioning Stage

February 19, 2024

9. Summary of Major Plant performance

Table 05

Plant	Maximum Available Total Capacity	Plant Availability	Night peak Load	Plant Dispatch
	(MW)	(MW)	(MW)	(MWh)
Wimalasurendra	50	54	20	577
Old Laxapana	54	54	53	1,258
Canyon	60	60	46	360
New Laxapana	100	50	50	1,047
Polpitiya	90	90	80	1,260
Broadlands	35	34	17	244
Kotmale	201	201	108	750
Victoria	210	228	92	1,209
Randenigala	123	120	119	1,037
Rantambe	50	50	37	642
Ukuwela	40	40	37	503
Bowatenna	40	40	39	84
Upper Kotmale	150	75	0	457
Nilambe	3	3	2	27
Samanalawewa	120	120	61	553
Kukule	75	38	0	0
Uma Oya (Testing)	120	0	0	0
Inginiyagala	11	7	6	53
Udawalawe	6	3	3	78
Puttalam Coal I	270	270	270	5,833
Puttalam Coal II	270	270	269	6,054
Puttalam Coal III	270	270	272	5,849
KPS Small GTs	54	16	0	0
KPS GT 7	115	115	0	0
KCCP	165	150	0	0
Sapugaskanda A	70	50	50	899
Sapugaskanda B	72	54	54	989
Uthura Janani	22	24	23	154
Barge CEB	62	60	45	650
CEB-Hambantota	30	17	0	0
CEB-Mathugama	20	13	0	0
ACE Matara	24	24	24	87
Asia Power	50	0	0	0
KCCPS -2	163	155	0	0
West Coast	270	270	135	974
Nothern Power	36	0	0	0
ACE Embilipitiya	93	93	92	520
Total	3,594	3,117	2,147	36,143

Note-

Plant availability is the availability recorded at 6 am on

February 19, 2024

Installed Capacity is sourced from CEB Annual Report- 2022

10. Contribution to the Night Peak in MW

February 18, 2024

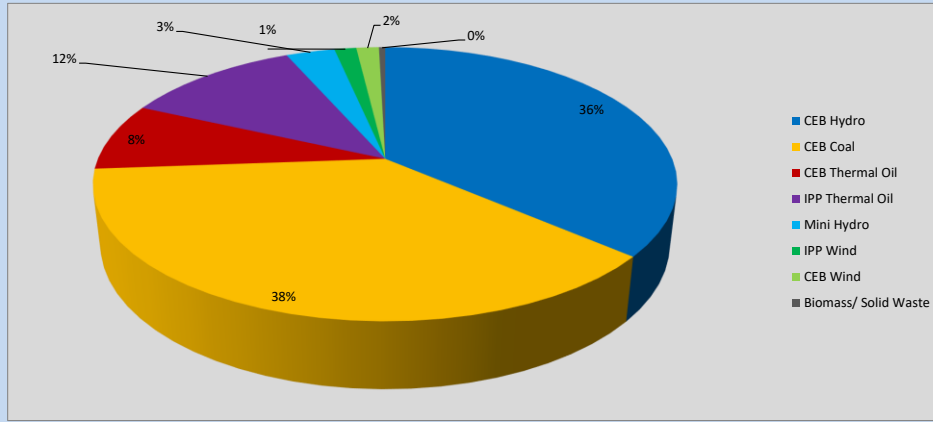


Table 06

CEB Hydro	784	MW
CEB Coal	811	MW
CEB Thermal Oil	172	MW
IPP Thermal Oil	251	MW
Mini Hydro (Telemetered)	70	MW
IPP Wind	31.3	MW
CEB Wind	32.3	MW
Biomass/ Solid Waste	9	MW

Recorded Peak Demand Data

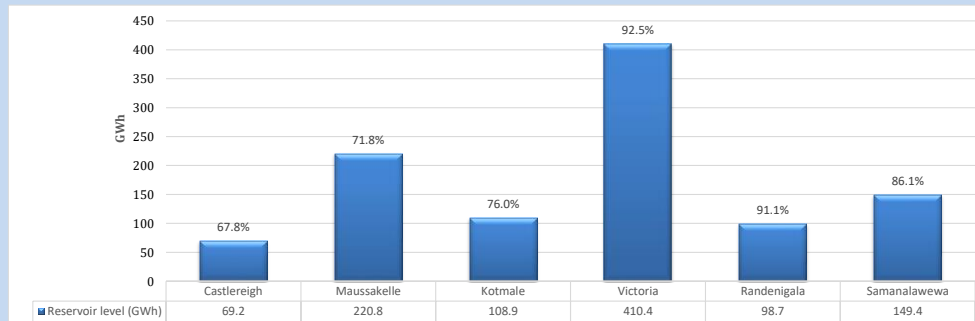
Table 07

Night Peak*	2,160	MW
Day Peak Maximum Demand	1,653	MW
Day Peak Minimum Demand	1,220	MW
Off Peak Minimum Demand	1,340	MW

Above figures are excluding contribution from roof top solar, non telemetered solar and mini hydro plants

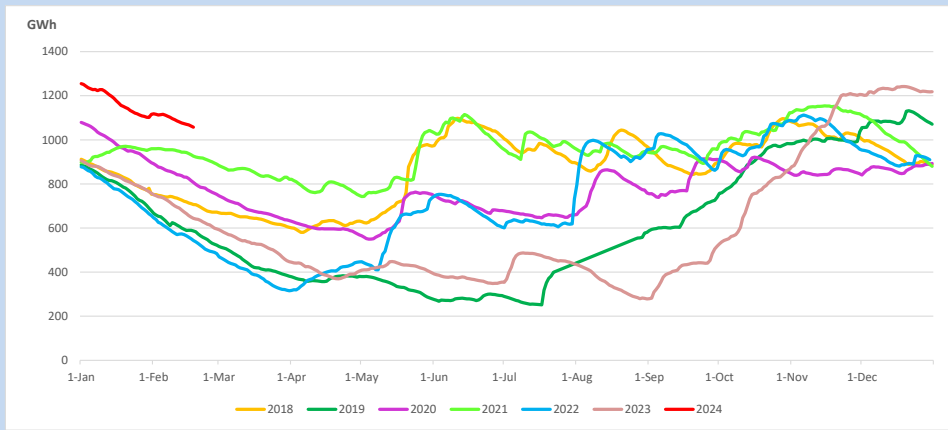
Reservoir Levels -

as at 06.00 Hr on February 19, 2024

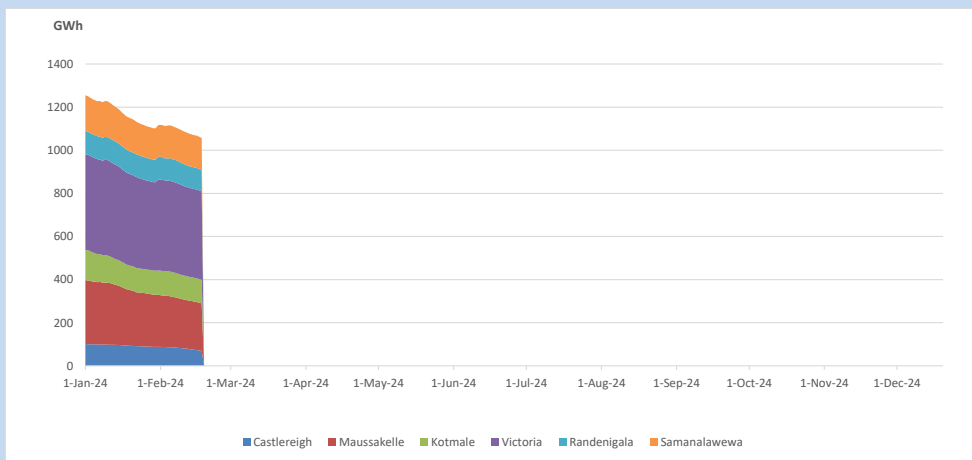


Total Reservoir Level 1057.4 GWh
 % of Total capacity 82.7%

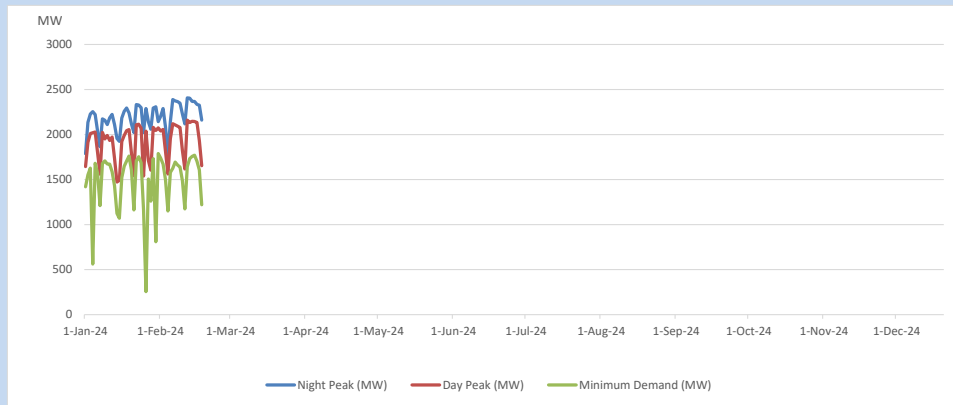
11. Comparison of Total Reservoir Storage Levels with Past Years



12. Variation of Major Hydro Reservoir Levels in the current year (GWh)



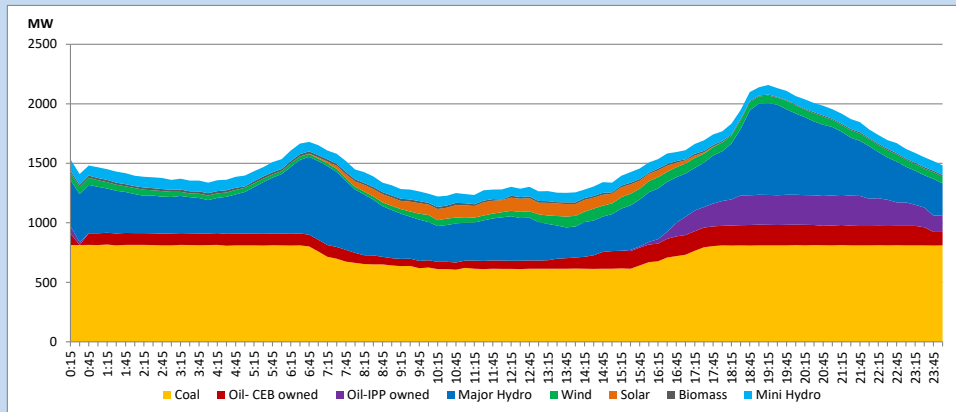
13. Variation of Demand during the current year



The above figures are excluding contribution from roof top solar, non telemetered solar and mini hydro plants

14. Daily Load Curve

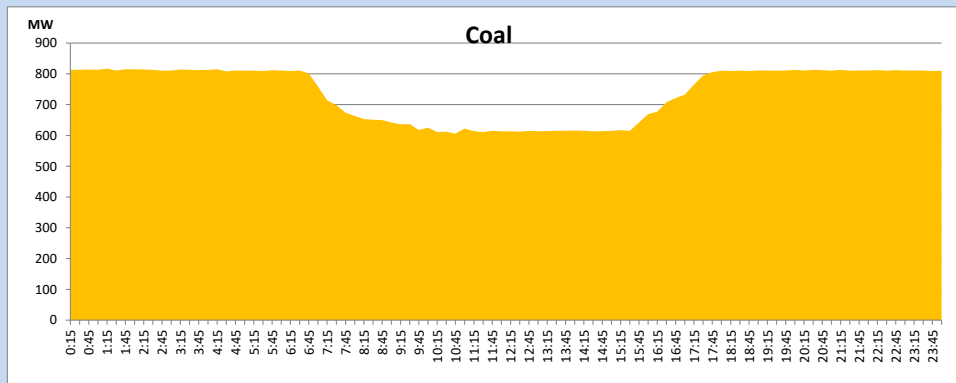
February 18, 2024



Solar and wind data is based on Telemetered Power Stations only

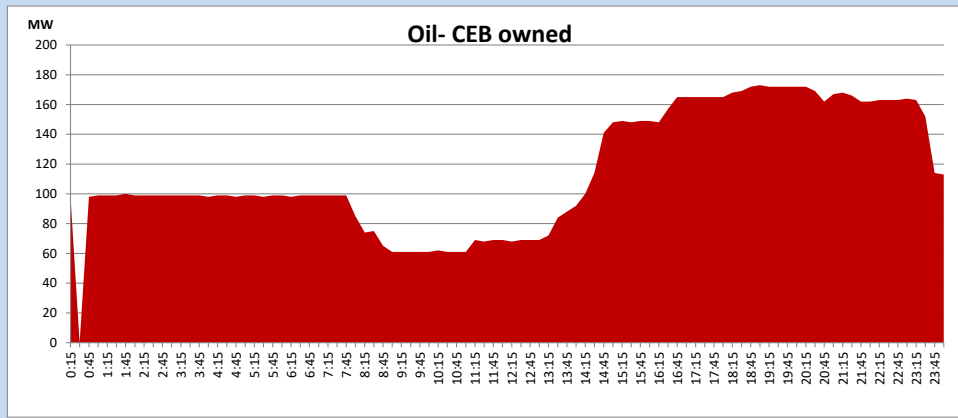
Coal Generation during

February 18, 2024



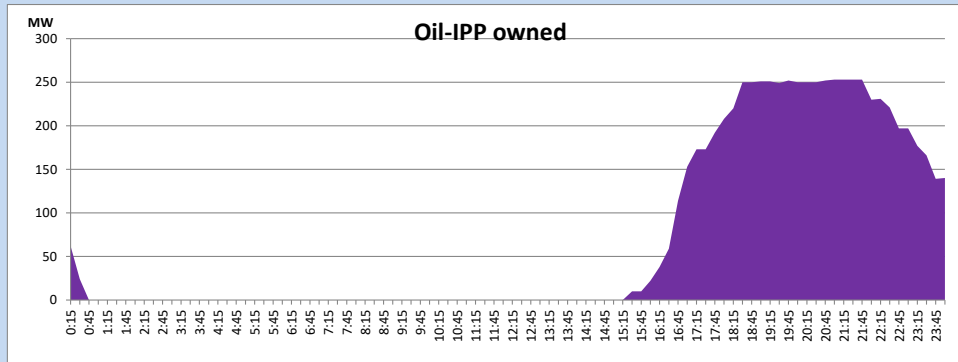
CEB Oil Plant Generation during

February 18, 2024



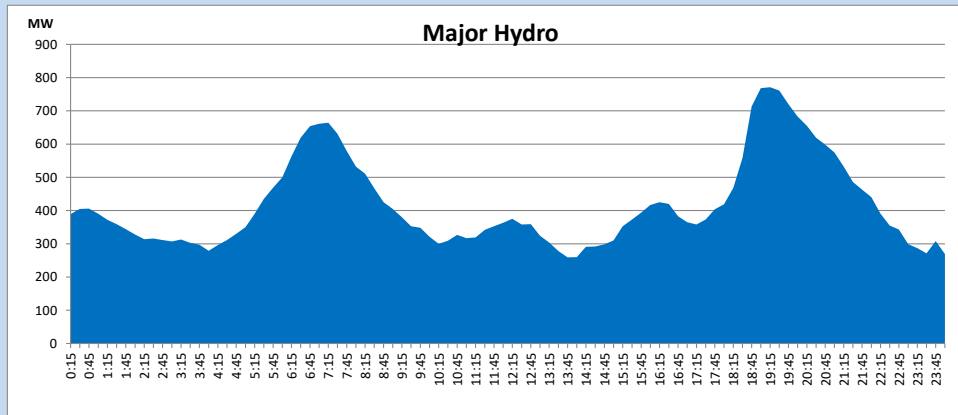
IPP Oil Plant Generation during

February 18, 2024



Major Hydro Generation during

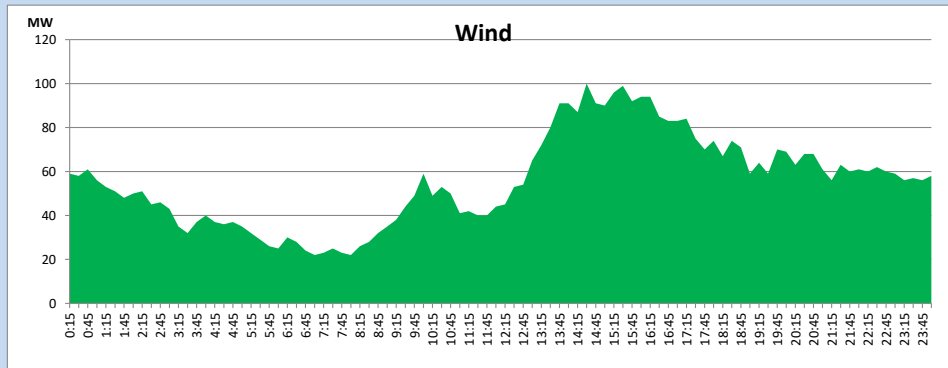
February 18, 2024



Wind Generation during

February 18, 2024

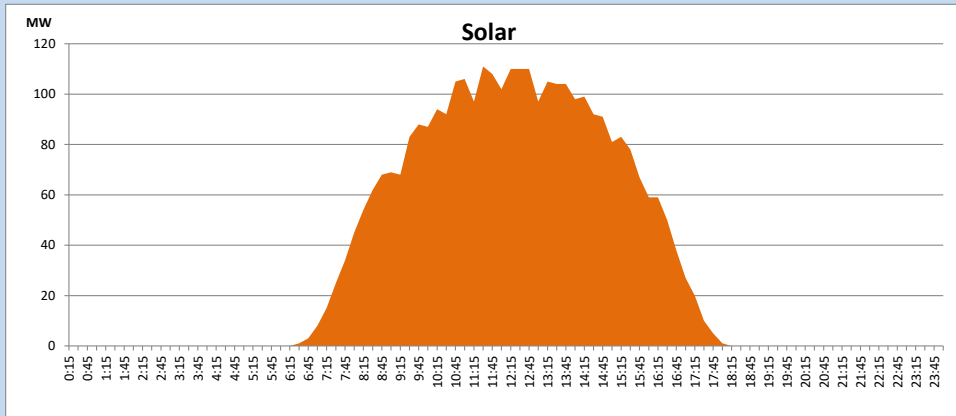
Based on Telemetered Power Stations only



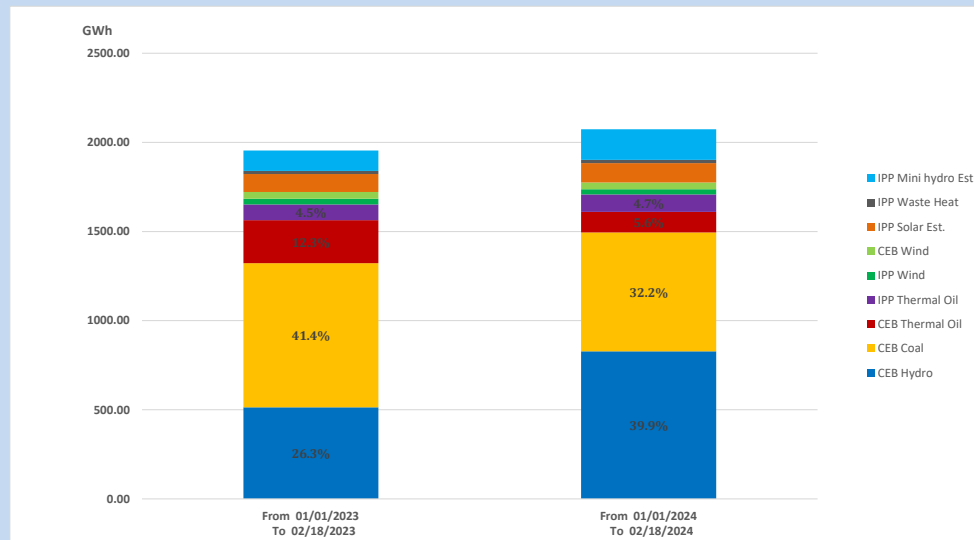
Solar Generation during

February 18, 2024

Based on Telemetered Power Stations only



15. Cumulative Dispatch Comparison with Last Year



Cumulative dispatch
From 01/01/2023 To 02/18/2023
From 01/01/2024 To 02/18/2024

1955 GWh
2074 GWh

The above figures are including contribution from roof top solar, non telemetered solar and mini hydro plants)
Unserviced energy due to power cuts has been excluded in 2023

Thermal Plant Fuel types

Table 08

Power Station	Primary Fuel
CEB Thermal	
Sapugaskanda 1	Heavy Fuel
Sapugaskanda 2	Heavy Fuel
Kelanitissa Small Gas Turbines	Auto Diesel
GT 7 - Kelanitissa	Auto Diesel
Kelanitissa CCY	Naphtha or Diesel
Lakvijaya 1	Coal
Lakvijaya 2	Coal
Lakvijaya 3	Coal
Uthuru Janani	Heavy Fuel
Barge CEB	Heavy Fuel
KCCPS -2	Auto Diesel

Power Station	Primary Fuel
Private Thermal	
West Coast	Auto Diesel / Heavy Fuel
ACE Matara	Heavy Fuel
ACE Embilipitiya	Heavy Fuel

Major Incidents reported during the day

February 18, 2024

Nil