

Generation and Reservoirs Statistics

February 16, 2024



PUBLIC UTILITIES COMMISSION OF SRI LANKA

1. Daily Generation Mix in MWh

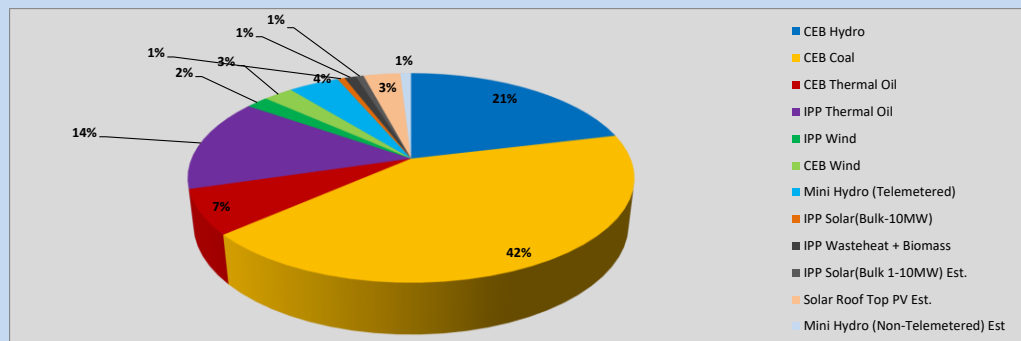


Table 01

	Generation (MWh)
CEB Hydro	9,763
CEB Coal	19,471
CEB Thermal Oil	3,169
IPP Thermal Oil	6,583
IPP Wind	886
CEB Wind	1,181
Mini Hydro (Telemetered)	2,016
IPP Solar (Bulk)	291
IPP Waste heat + Biomass	465
Total Generation (Excluding estimated figures)	43,825
* Estimated unserved energy	0
* Estimated Mini Hydro (Non telemetered)	430
* Estimated IPP Solar PV (Bulk 1-10MW)	305
* Estimated Solar Roof Top PV	1470
Total Generation (Including estimated figures)	46,030

* Estimated figures of CEB generation report

Table 02

	Installed Capacity (MW)
CEB Hydro	1644
CEB Coal	810
CEB Thermal Oil	773.1
IPP Thermal Oil (West Coast, ACE Matara and ACE Embilipitiya)	386.9
IPP Wind	163
CEB Wind	100
Mini Hydro	422
IPP Waste heat + Biomass	54
IPP Solar	137
Rooftop Solar (Ordinary)	293
Rooftop Solar (LT Bulk)	272
Rooftop Solar (HT Bulk)	74

Data Source - Monthly Review Report [Aug-2023]

2. Cumulative Dispatch

Following data excludes the contribution from roof top solar, non telemetered solar and mini hydro plants

Table 03 - Current Month

Category	Dispatch (GWh)	
CEB Hydro	176	25.32%
CEB Coal	306	44.04%
CEB Thermal Oil	52	7.46%
IPP Thermal	47	6.73%
SPP Wind	12	1.66%
CEB Wind	14	2.00%
Mini Hydro *	47	6.82%
IPP Solar *	34	4.96%
IPP Waste heat + BMP	7	1.01%
Total	696	

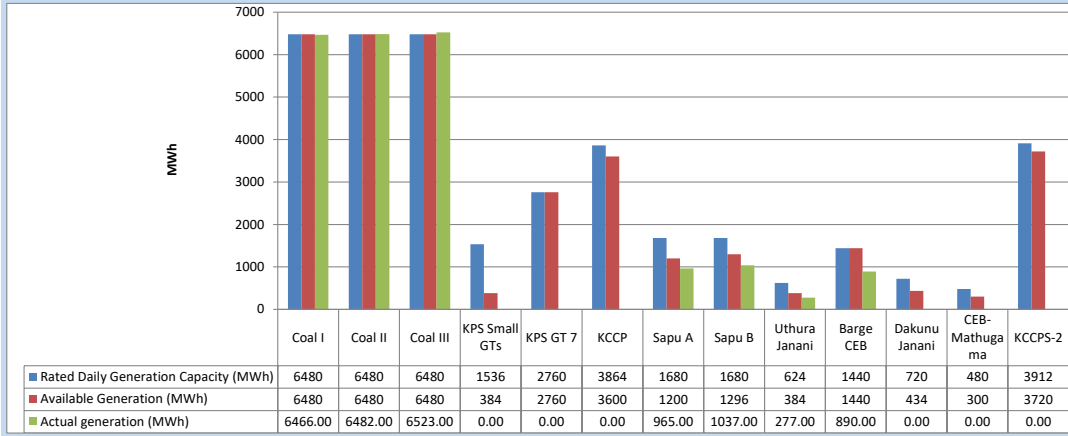
Table 04 - Current Year

Category	Dispatch (GWh)	
CEB Hydro	807	40.54%
CEB Coal	630	31.64%
CEB Thermal Oil	109	5.49%
IPP Thermal	92	4.64%
SPP Wind	28	1.41%
CEB Wind	36	1.80%
Mini Hydro *	167	8.36%
IPP Solar *	104	5.22%
IPP Waste heat	18	0.91%
Total	1,992	

*Including estimated contribution from non telemetered plants

3. CEB owned Thermal Plant Dispatch

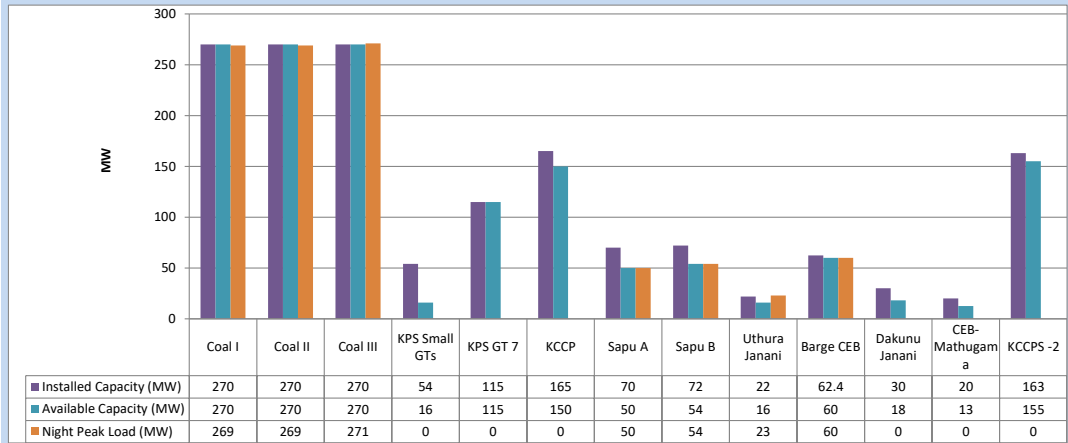
February 16, 2024



Available Generation is estimated based on plant availability at 6.00am on

February 17, 2024

4. CEB owned Thermal Plant Loading at the Night Peak

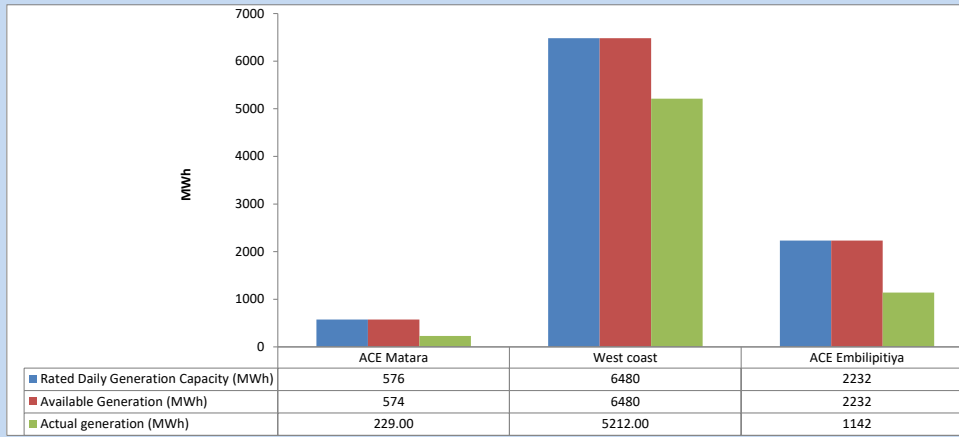


Plant availability is recorded at 6.00 am on

February 17, 2024

5. IPP owned Thermal Plant Dispatch

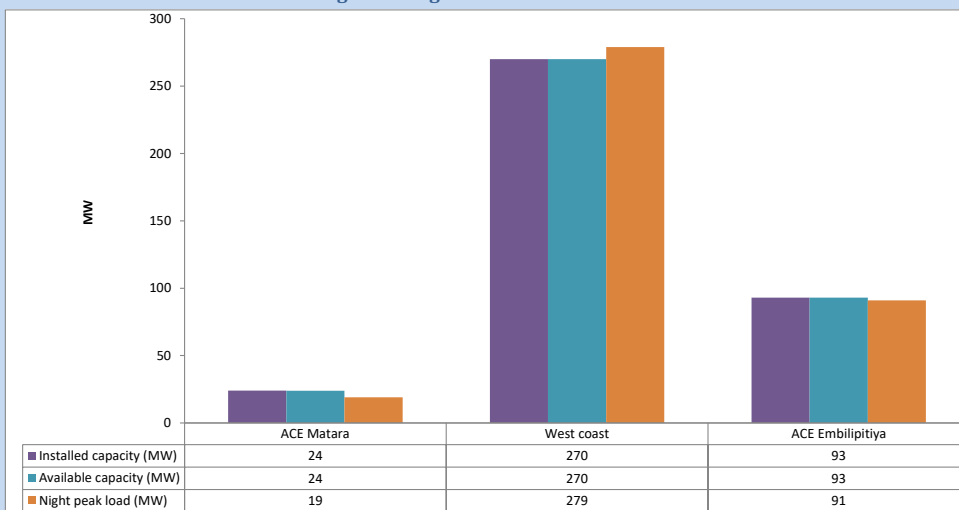
February 16, 2024



Available Generation is estimated based on plant availability at 6.00am on

February 17, 2024

6. IPP owned Thermal Plant Loading at the Night Peak

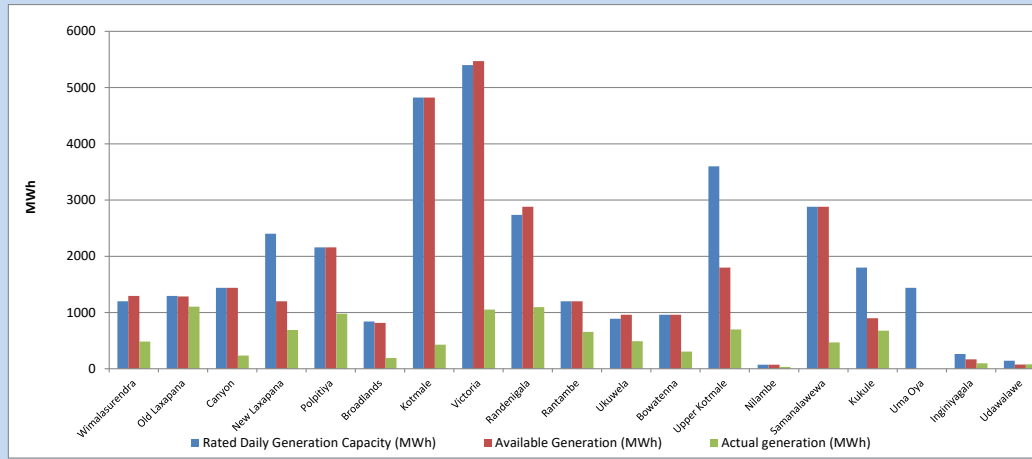


Plant availability is recorded at 6.00 am on

February 17, 2024

7. Major Hydro Plant Dispatch

February 16, 2024

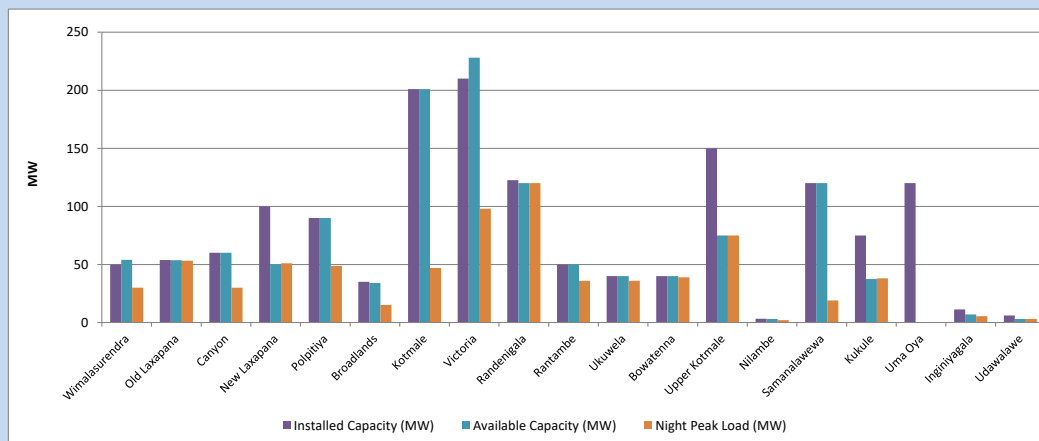


Available Generation is estimated based on plant availability at 6.00am on
Broadlands power plant is operating in the Commissioning Stage

February 17, 2024

8. Major Hydro Plant Loading at Night Peak

February 16, 2024



Plant availability is recorded at 6.00 am on
Broadlands power plant is operating in the Commissioning Stage

February 17, 2024

9. Summary of Major Plant performance

Table 05

Plant	Maximum Available Total Capacity	Plant Availability	Night peak Load	Plant Dispatch
	(MW)	(MW)	(MW)	(MWh)
Wimalasurendra	50	54	30	483
Old Laxapana	54	54	53	1,104
Canyon	60	60	30	236
New Laxapana	100	50	51	689
Polpitiya	90	90	49	980
Broadlands	35	34	15	191
Kotmale	201	201	47	430
Victoria	210	228	98	1,052
Randenigala	123	120	120	1,094
Rantambe	50	50	36	657
Ukuwela	40	40	36	491
Bowatenna	40	40	39	306
Upper Kotmale	150	75	75	699
Nilambe	3	3	2	31
Samanalawewa	120	120	19	468
Kukule	75	38	38	676
Uma Oya (Testing)	120	0	0	0
Inginiyagala	11	7	5	98
Udawalawe	6	3	3	78
Puttalam Coal I	270	270	269	6,466
Puttalam Coal II	270	270	269	6,482
Puttalam Coal III	270	270	271	6,523
KPS Small GTs	54	16	0	0
KPS GT 7	115	115	0	0
KCCP	165	150	0	0
Sapugaskanda A	70	50	50	965
Sapugaskanda B	72	54	54	1,037
Uthura Janani	22	16	23	277
Barge CEB	62	60	60	890
CEB-Hambantota	30	18	0	0
CEB-Mathugama	20	13	0	0
ACE Matara	24	24	19	229
Asia Power	50	0	0	0
KCCPS -2	163	155	0	0
West Coast	270	270	279	5,212
Nothern Power	36	0	0	0
ACE Embilipitiya	93	93	91	1,142
Total	3,594	3,110	2,321	43,825

Note-

Plant availability is the availability recorded at 6 am on

February 17, 2024

Installed Capacity is sourced from CEB Annual Report- 2022

10. Contribution to the Night Peak in MW

February 16, 2024

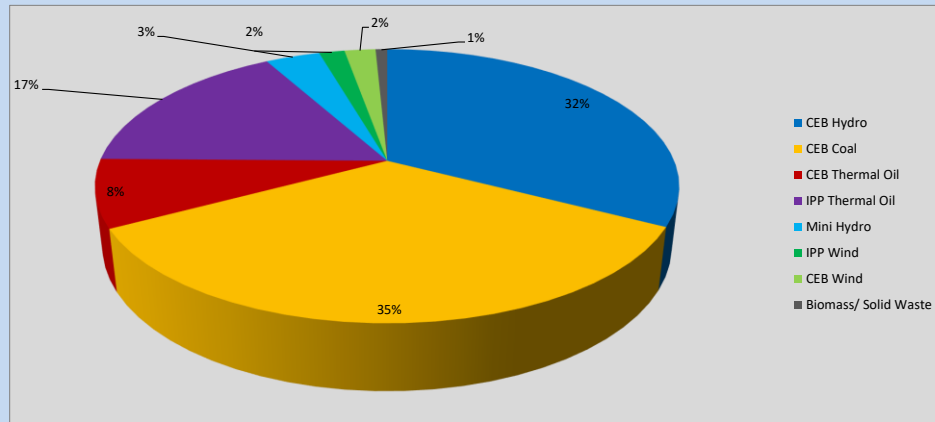


Table 06

CEB Hydro	760	MW
CEB Coal	809	MW
CEB Thermal Oil	187	MW
IPP Thermal Oil	389	MW
Mini Hydro (Telemetered)	84	MW
IPP Wind	39.4	MW
CEB Wind	48	MW
Biomass/ Solid Waste	18	MW

Recorded Peak Demand Data

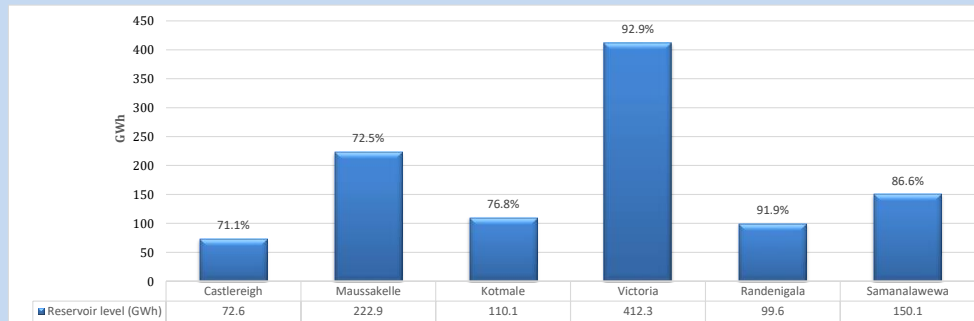
Table 07

Night Peak*	2,335	MW
Day Peak Maximum Demand	2,134	MW
Day Peak Minimum Demand	1,704	MW
Off Peak Minimum Demand	1,393	MW

Above figures are excluding contribution from roof top solar, non telemetered solar and mini hydro plants

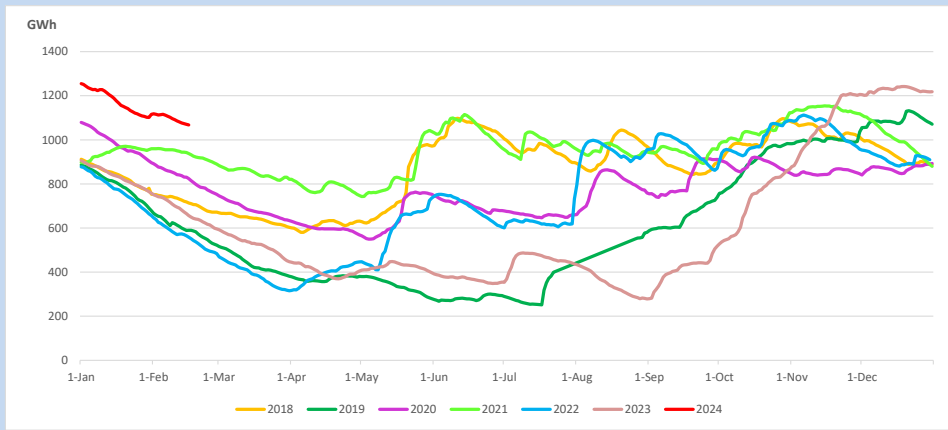
Reservoir Levels -

as at 06.00 Hr on February 17, 2024

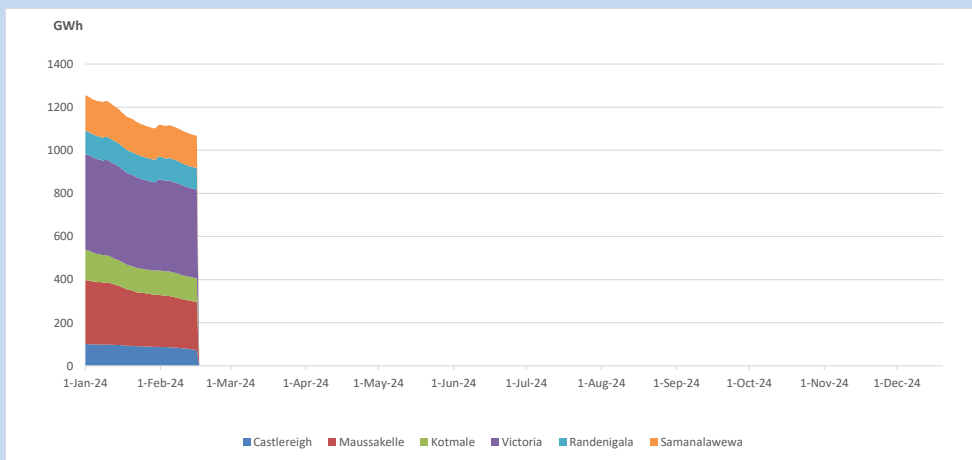


Total Reservoir Level 1067.6 GWh
% of Total capacity 83.5%

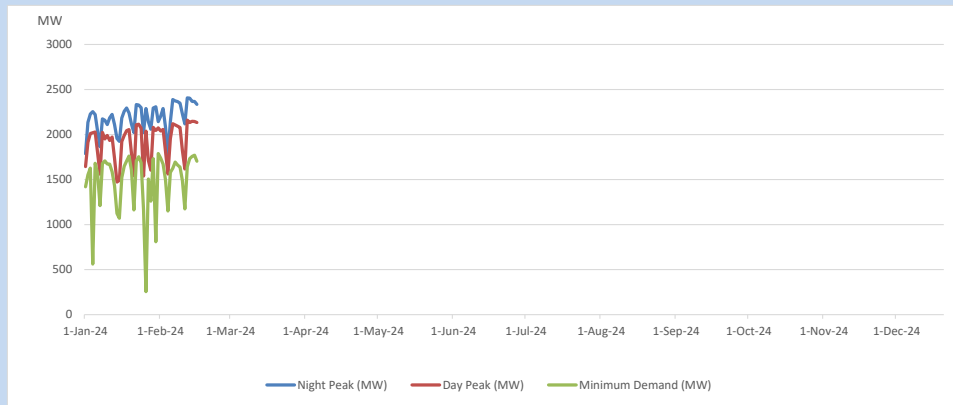
11. Comparison of Total Reservoir Storage Levels with Past Years



12. Variation of Major Hydro Reservoir Levels in the current year (GWh)



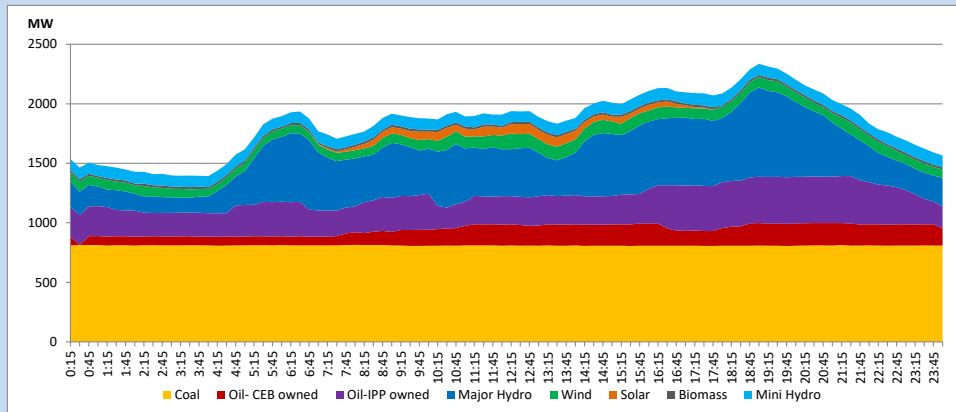
13. Variation of Demand during the current year



The above figures are excluding contribution from roof top solar, non telemetered solar and mini hydro plants

14. Daily Load Curve

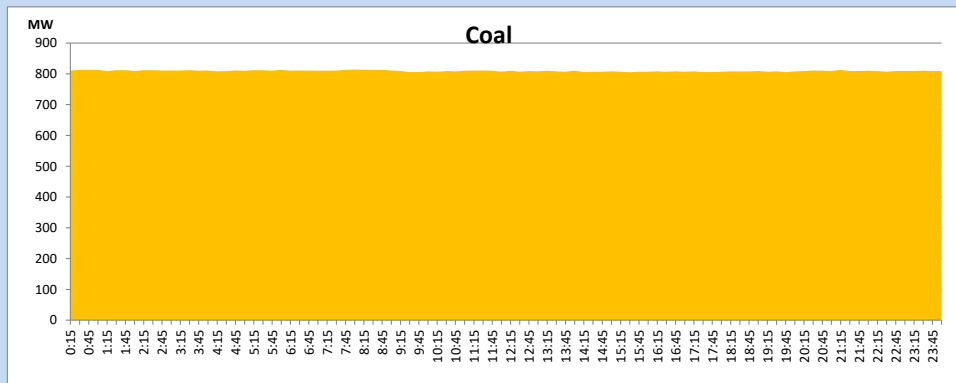
February 16, 2024



Solar and wind data is based on Telemetered Power Stations only

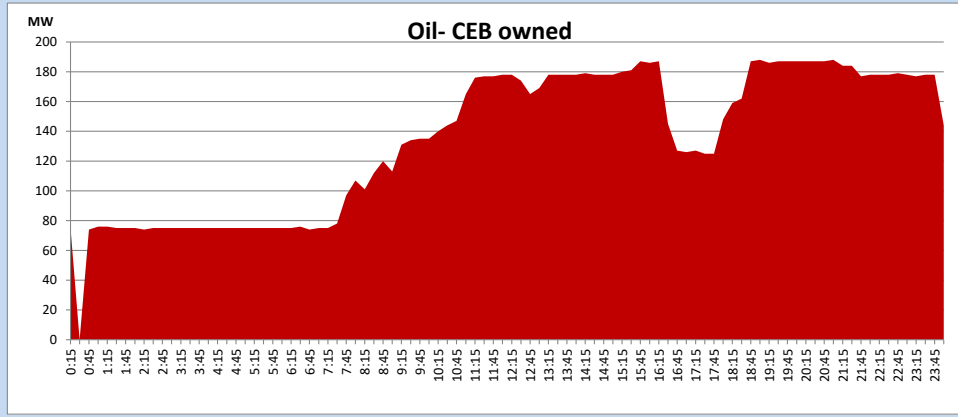
Coal Generation during

February 16, 2024



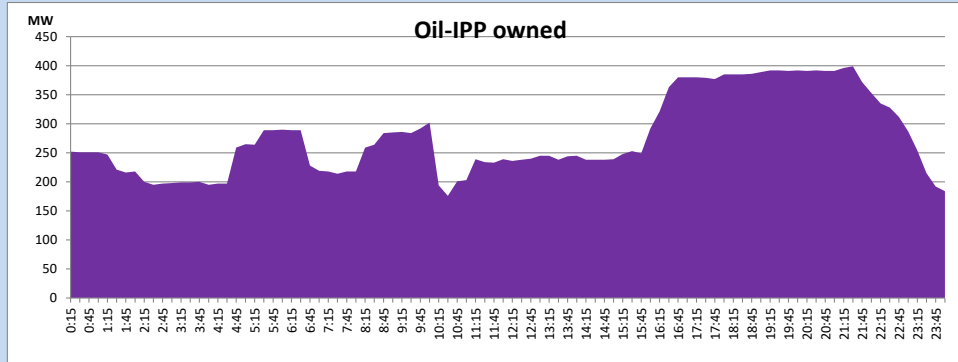
CEB Oil Plant Generation during

February 16, 2024



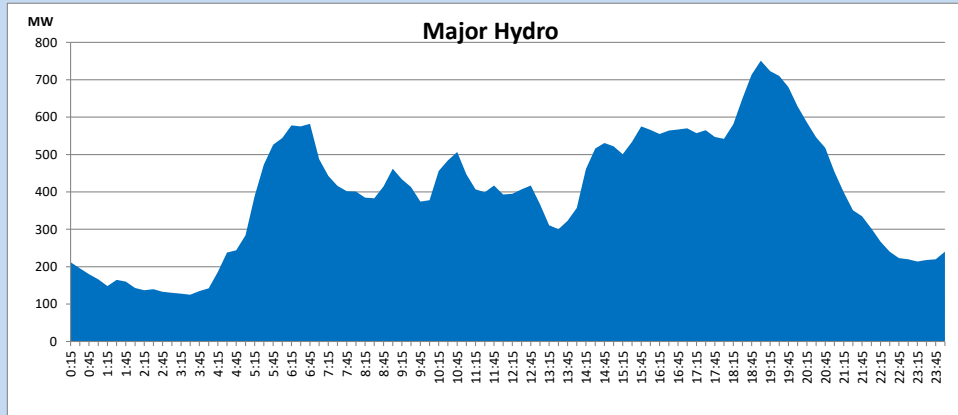
IPP Oil Plant Generation during

February 16, 2024



Major Hydro Generation during

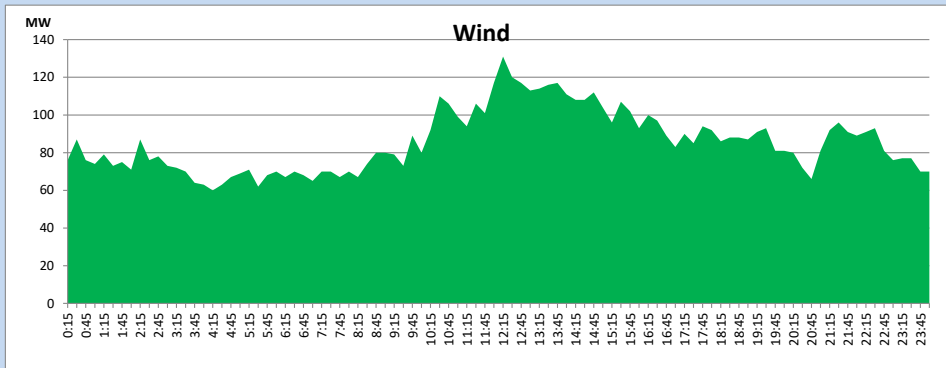
February 16, 2024



Wind Generation during

February 16, 2024

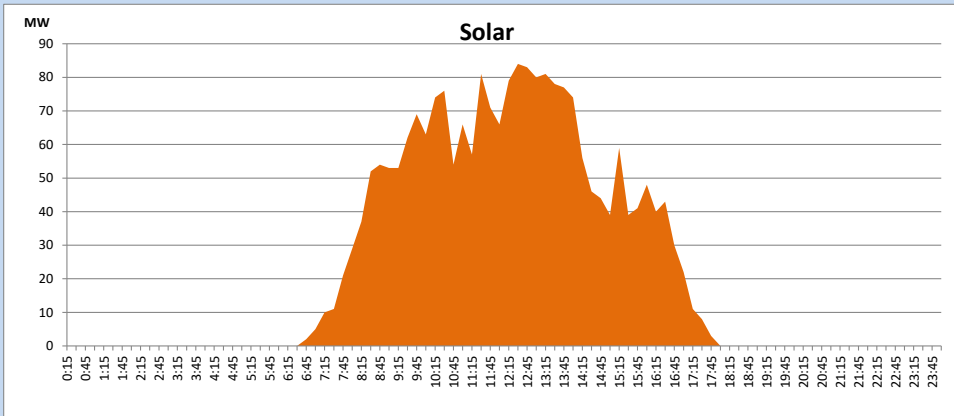
Based on Telemetered Power Stations only



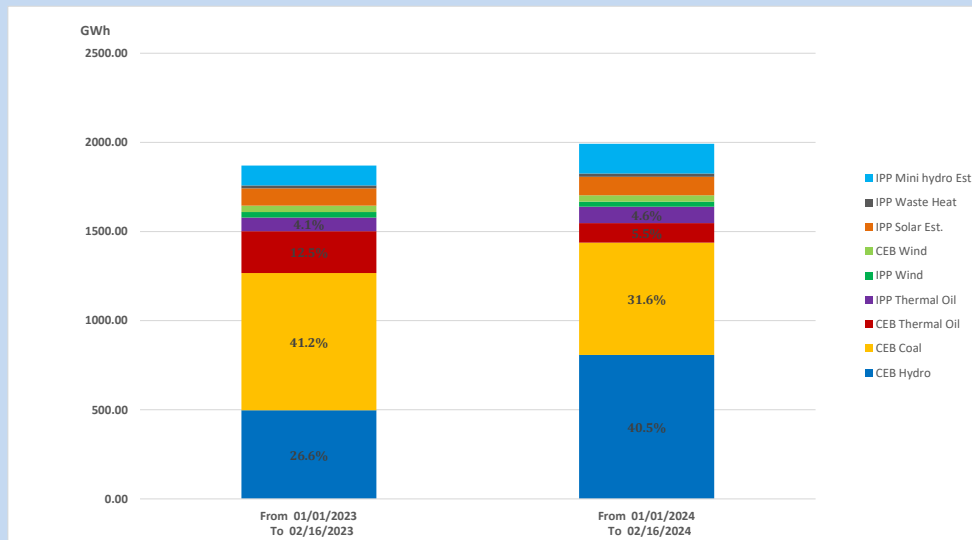
Solar Generation during

February 16, 2024

Based on Telemetered Power Stations only



15. Cumulative Dispatch Comparison with Last Year



Cumulative dispatch
From 01/01/2023 To 02/16/2023 **1870 GWh**
From 01/01/2024 To 02/16/2024 **1992 GWh**

The above figures are including contribution from roof top solar, non telemetered solar and mini hydro plants)
 Unused energy due to power cuts has been excluded in 2023

Thermal Plant Fuel types

Table 08

Power Station	Primary Fuel
CEB Thermal	
Sapugaskanda 1	Heavy Fuel
Sapugaskanda 2	Heavy Fuel
Kelanitissa Small Gas Turbines	Auto Diesel
GT 7 - Kelanitissa	Auto Diesel
Kelanitissa CCY	Naphtha or Diesel
Lakvijaya 1	Coal
Lakvijaya 2	Coal
Lakvijaya 3	Coal
Uthuru Janani	Heavy Fuel
Barge CEB	Heavy Fuel
KCCPS -2	Auto Diesel

Power Station	Primary Fuel
Private Thermal	
West Coast	Auto Diesel / Heavy Fuel
ACE Matara	Heavy Fuel
ACE Embilipitiya	Heavy Fuel

Major Incidents reported during the day

February 16, 2024

- 1) Polpitiya unit 01 & Canyon unit 01 made available for the generation after annual maintenance.