

Generation and Reservoirs Statistics

February 15, 2024



PUBLIC UTILITIES COMMISSION OF SRI LANKA

1. Daily Generation Mix in MWh

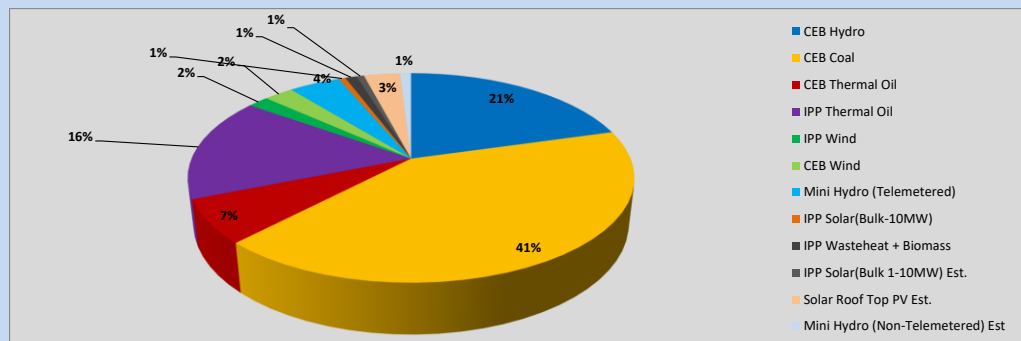


Table 01

	Generation (MWh)
CEB Hydro	9,646
CEB Coal	19,480
CEB Thermal Oil	3,168
IPP Thermal Oil	7,484
IPP Wind	844
CEB Wind	1,194
Mini Hydro (Telemetered)	2,081
IPP Solar (Bulk)	283
IPP Waste heat + Biomass	466
Total Generation (Excluding estimated figures)	44,646
* Estimated unserved energy	0
* Estimated Mini Hydro (Non telemetered)	444
* Estimated IPP Solar PV (Bulk 1-10MW)	304
* Estimated Solar Roof Top PV	1470
Total Generation (Including estimated figures)	46,864

* Estimated figures of CEB generation report

Table 02

	Installed Capacity (MW)
CEB Hydro	1644
CEB Coal	810
CEB Thermal Oil	773.1
IPP Thermal Oil (West Coast, ACE Matara and ACE Embilipitiya)	386.9
IPP Wind	163
CEB Wind	100
Mini Hydro	422
IPP Waste heat + Biomass	54
IPP Solar	137
Rooftop Solar (Ordinary)	293
Rooftop Solar (LT Bulk)	272
Rooftop Solar (HT Bulk)	74

Data Source - Monthly Review Report [Aug-2023]

2. Cumulative Dispatch

Following data excludes the contribution from roof top solar, non telemetered solar and mini hydro plants

Table 03 - Current Month

Category	Dispatch (GWh)	
CEB Hydro	166	25.61%
CEB Coal	287	44.17%
CEB Thermal Oil	49	7.50%
IPP Thermal	40	6.19%
SPP Wind	11	1.64%
CEB Wind	13	1.96%
Mini Hydro *	45	6.92%
IPP Solar *	32	4.99%
IPP Waste heat + BMP	7	1.01%
Total	650	

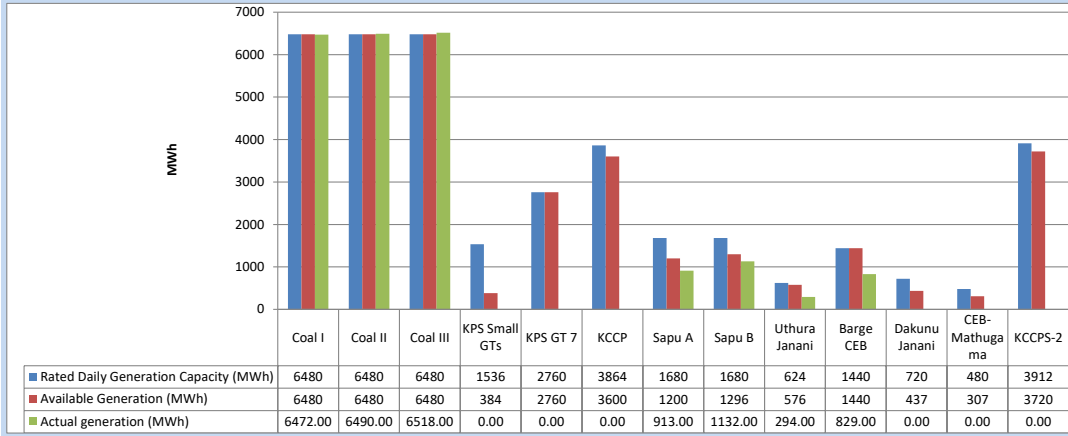
Table 04 - Current Year

Category	Dispatch (GWh)	
CEB Hydro	798	40.99%
CEB Coal	611	31.39%
CEB Thermal Oil	106	5.46%
IPP Thermal	86	4.41%
SPP Wind	27	1.39%
CEB Wind	35	1.78%
Mini Hydro *	164	8.43%
IPP Solar *	102	5.24%
IPP Waste heat	18	0.91%
Total	1,946	

*Including estimated contribution from non telemetered plants

3. CEB owned Thermal Plant Dispatch

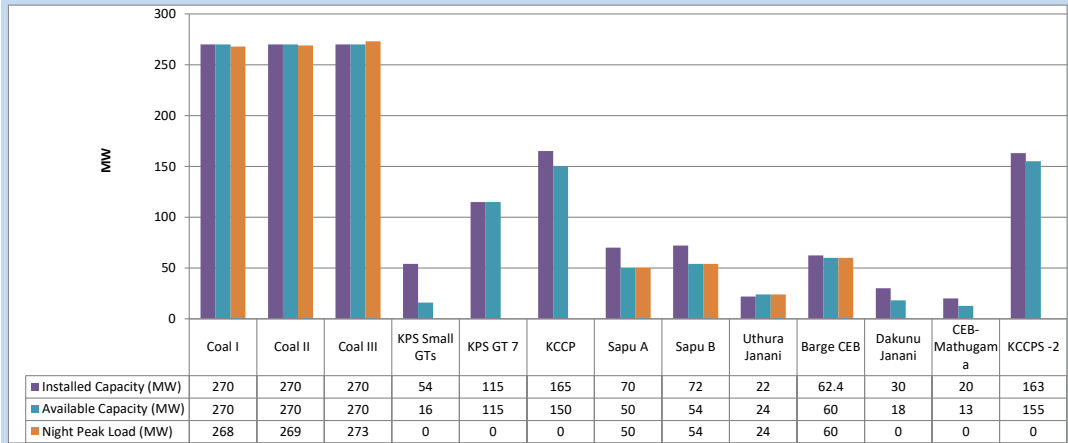
February 15, 2024



Available Generation is estimated based on plant availability at 6.00am on

February 16, 2024

4. CEB owned Thermal Plant Loading at the Night Peak

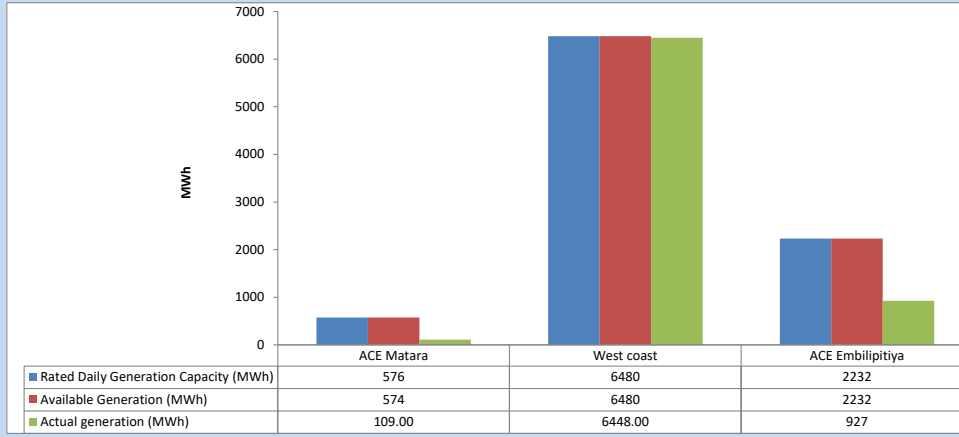


Plant availability is recorded at 6.00 am on

February 16, 2024

5. IPP owned Thermal Plant Dispatch

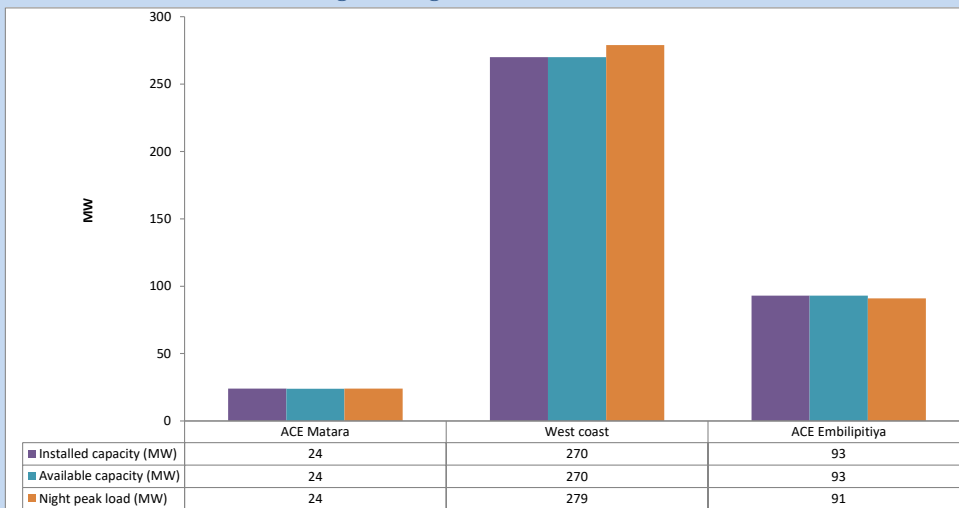
February 15, 2024



Available Generation is estimated based on plant availability at 6.00am on

February 16, 2024

6. IPP owned Thermal Plant Loading at the Night Peak

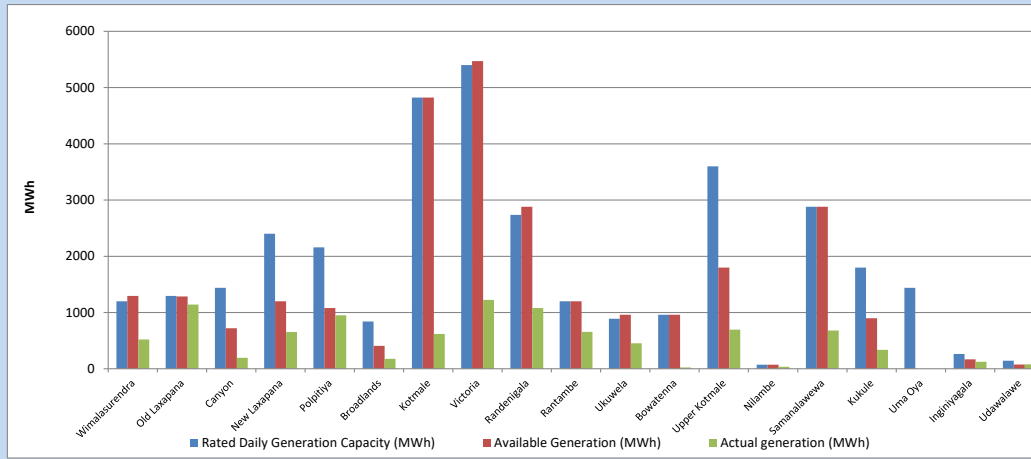


Plant availability is recorded at 6.00 am on

February 16, 2024

7. Major Hydro Plant Dispatch

February 15, 2024

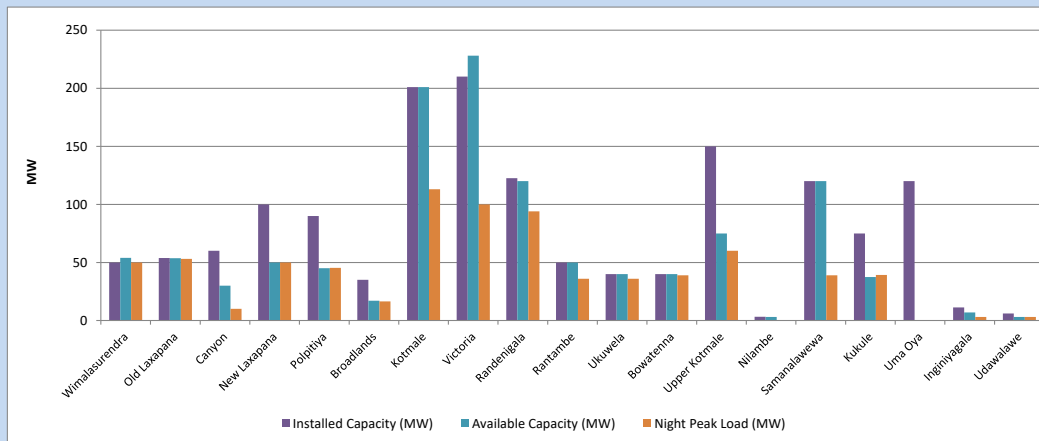


Available Generation is estimated based on plant availability at 6.00am on
Broadlands power plant is operating in the Commissioning Stage

February 16, 2024

8. Major Hydro Plant Loading at Night Peak

February 15, 2024



Plant availability is recorded at 6.00 am on
Broadlands power plant is operating in the Commissioning Stage

February 16, 2024

9. Summary of Major Plant performance

Table 05

Plant	Maximum Available Total Capacity	Plant Availability	Night peak Load	Plant Dispatch
	(MW)	(MW)	(MW)	(MWh)
Wimalasurendra	50	54	50	520
Old Laxapana	54	54	53	1,142
Canyon	60	30	10	196
New Laxapana	100	50	50	654
Polpitiya	90	45	45	950
Broadlands	35	17	17	176
Kotmale	201	201	113	620
Victoria	210	228	100	1,224
Randenigala	123	120	94	1,080
Rantambe	50	50	36	655
Ukuwela	40	40	36	453
Bowatenna	40	40	39	24
Upper Kotmale	150	75	60	697
Nilambe	3	3	0	36
Samanalawewa	120	120	39	680
Kukule	75	38	39	337
Uma Oya (Testing)	120	0	0	0
Inginiyagala	11	7	3	124
Udawalawe	6	3	3	78
Puttalam Coal I	270	270	268	6,472
Puttalam Coal II	270	270	269	6,490
Puttalam Coal III	270	270	273	6,518
KPS Small GTs	54	16	0	0
KPS GT 7	115	115	0	0
KCCP	165	150	0	0
Sapugaskanda A	70	50	50	913
Sapugaskanda B	72	54	54	1,132
Uthura Janani	22	24	24	294
Barge CEB	62	60	60	829
CEB-Hambantota	30	18	0	0
CEB-Mathugama	20	13	0	0
ACE Matara	24	24	24	109
Asia Power	50	0	0	0
KCCPS -2	163	155	0	0
West Coast	270	270	279	6,448
Nothern Power	36	0	0	0
ACE Embilipitiya	93	93	91	927
Total	3,594	3,026	2,371	44,646

Note-

Plant availability is the availability recorded at 6 am on

February 16, 2024

Installed Capacity is sourced from CEB Annual Report- 2022

10. Contribution to the Night Peak in MW

February 15, 2024

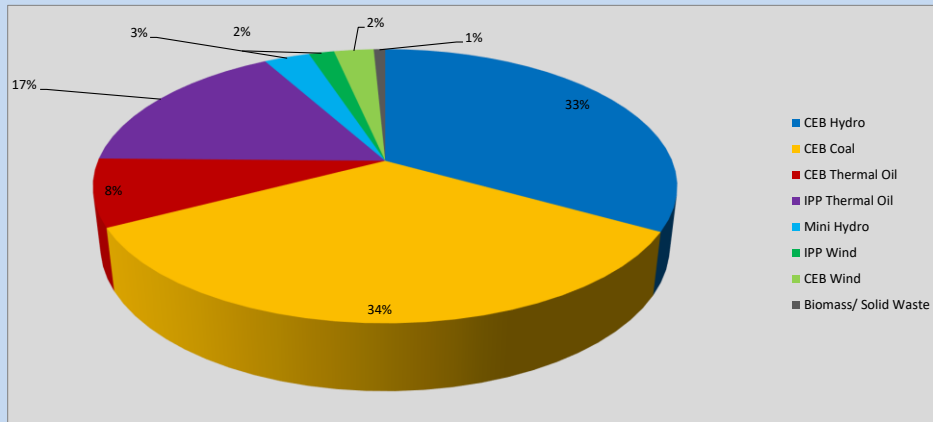


Table 06

CEB Hydro	784	MW
CEB Coal	810	MW
CEB Thermal Oil	188	MW
IPP Thermal Oil	394	MW
Mini Hydro (Telemetered)	71	MW
IPP Wind	39.8	MW
CEB Wind	62.2	MW
Biomass/ Solid Waste	18	MW

Recorded Peak Demand Data

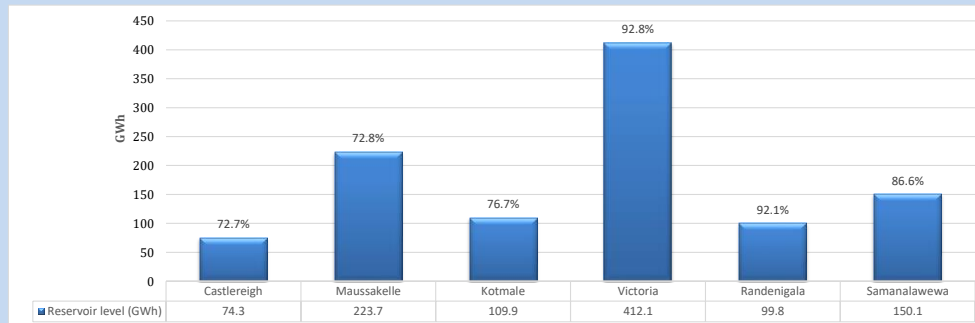
Table 07

Night Peak*	2,368	MW
Day Peak Maximum Demand	2,146	MW
Day Peak Minimum Demand	1,772	MW
Off Peak Minimum Demand	1,401	MW

Above figures are excluding contribution from roof top solar, non telemetered solar and mini hydro plants

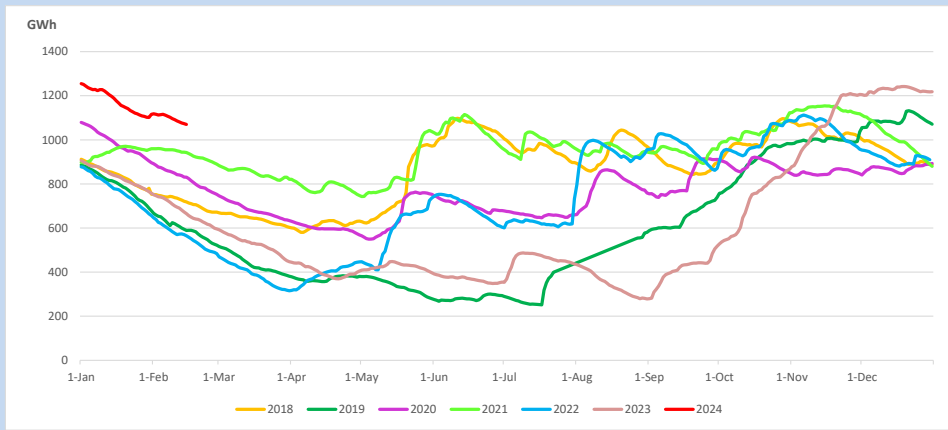
Reservoir Levels -

as at 06.00 Hr on February 16, 2024

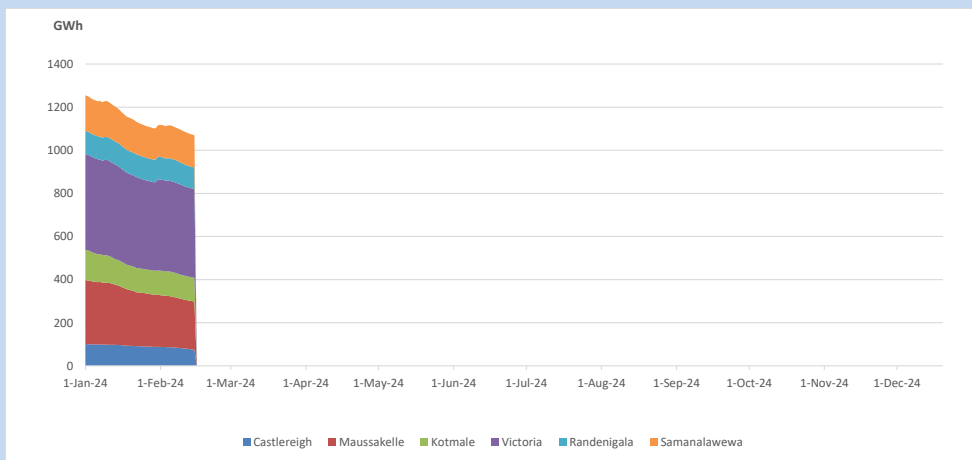


Total Reservoir Level 1069.9 GWh
% of Total capacity 83.7%

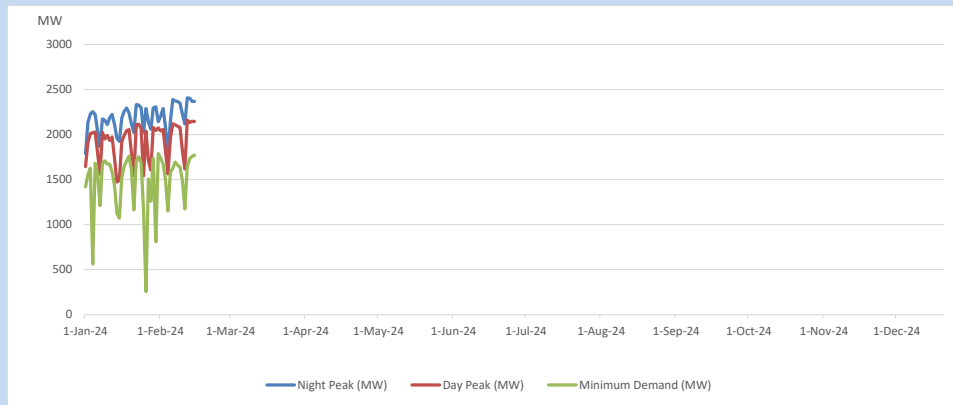
11. Comparison of Total Reservoir Storage Levels with Past Years



12. Variation of Major Hydro Reservoir Levels in the current year (GWh)



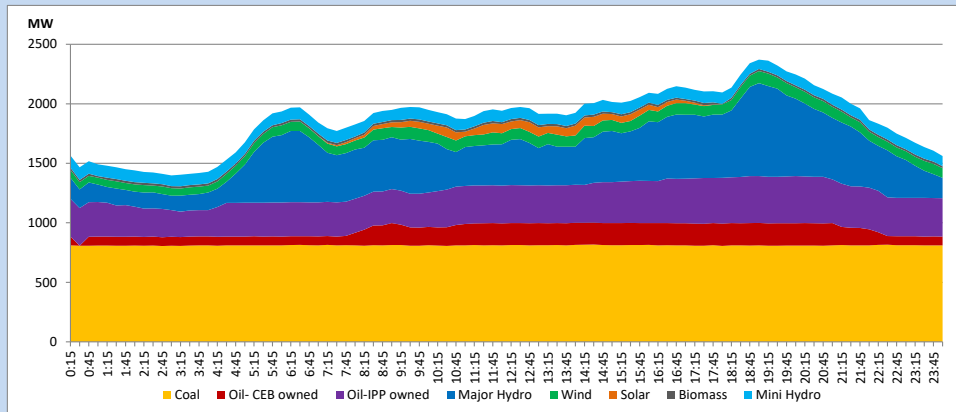
13. Variation of Demand during the current year



The above figures are excluding contribution from roof top solar, non telemetered solar and mini hydro plants

14. Daily Load Curve

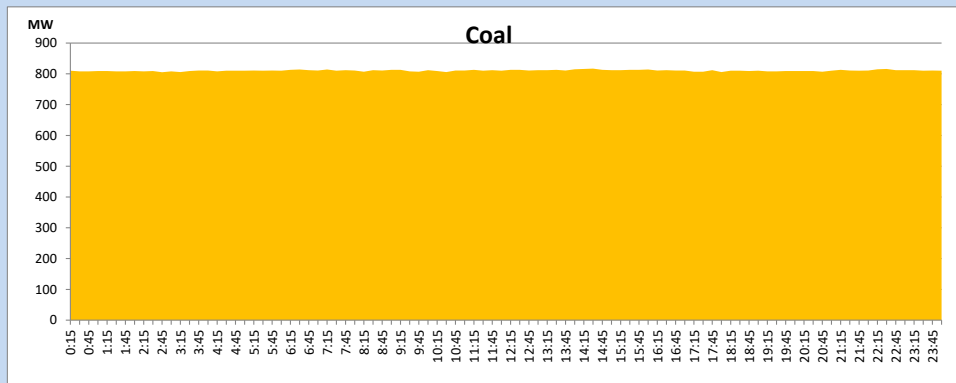
February 15, 2024



Solar and wind data is based on Telemetered Power Stations only

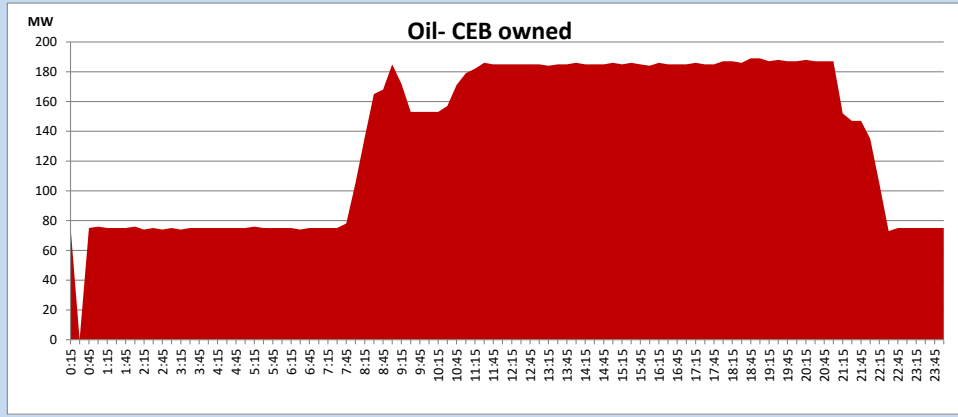
Coal Generation during

February 15, 2024



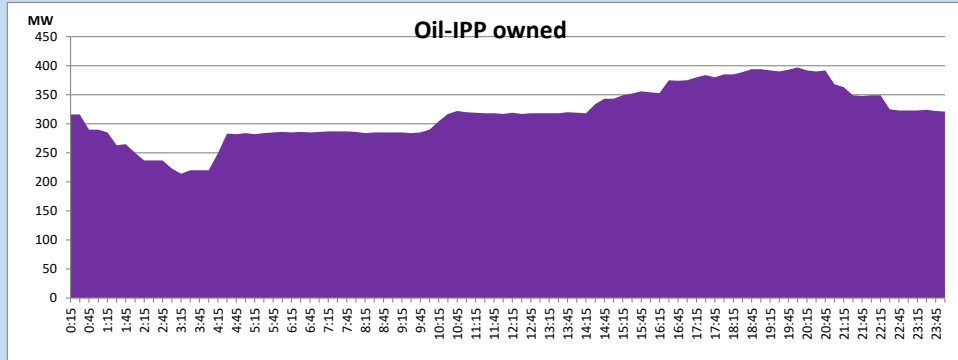
CEB Oil Plant Generation during

February 15, 2024



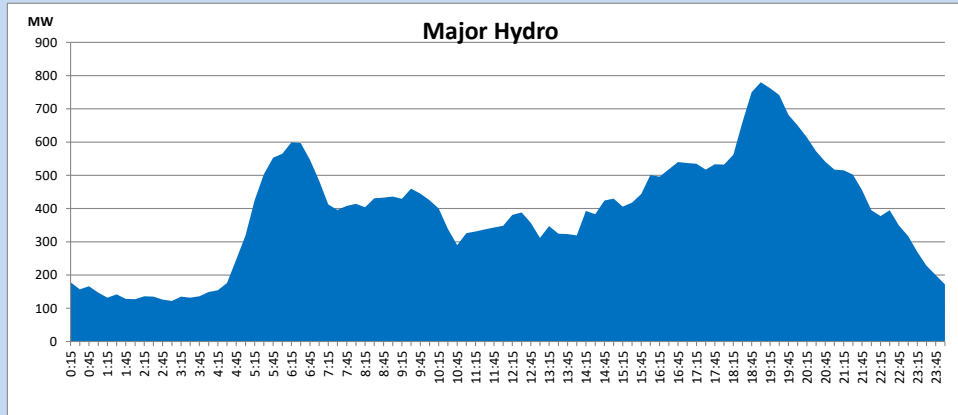
IPP Oil Plant Generation during

February 15, 2024



Major Hydro Generation during

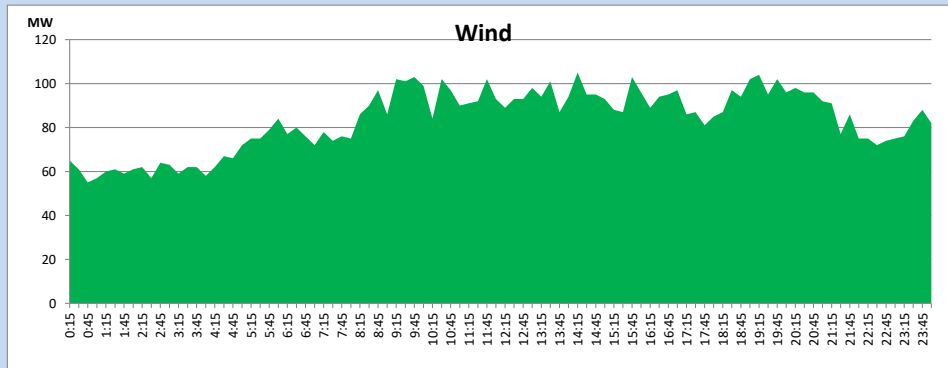
February 15, 2024



Wind Generation during

February 15, 2024

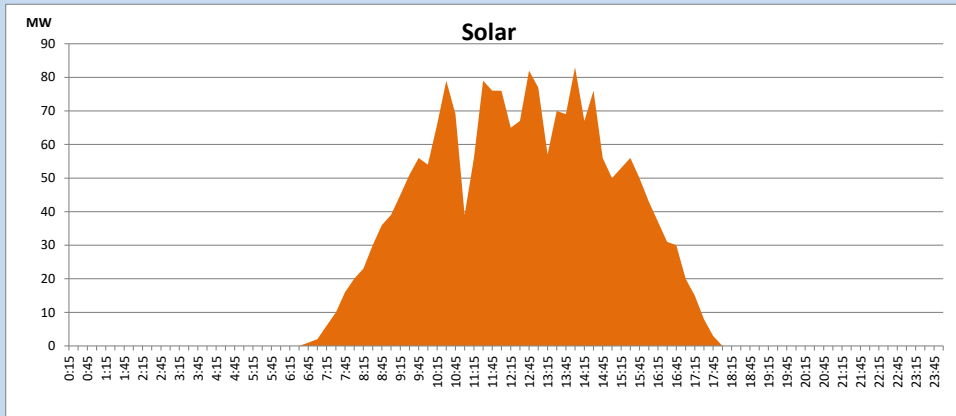
Based on Telemetered Power Stations only



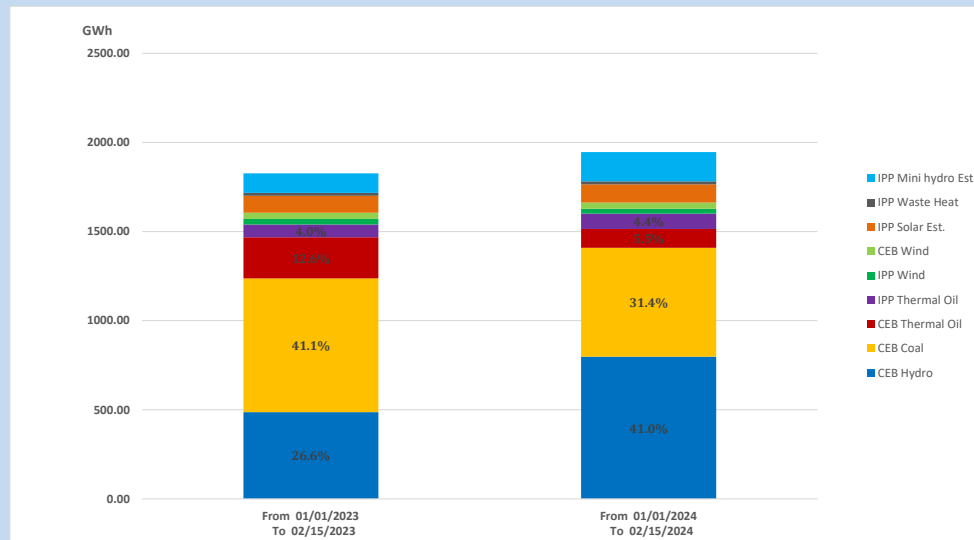
Solar Generation during

February 15, 2024

Based on Telemetered Power Stations only



15. Cumulative Dispatch Comparison with Last Year



Cumulative dispatch

From 01/01/2023 To 02/15/2023

1826 GWh

From 01/01/2024 To 02/15/2024

1946 GWh

The above figures are including contribution from roof top solar, non telemetered solar and mini hydro plants)

Unserviced energy due to power cuts has been excluded in 2023

Thermal Plant Fuel types

Table 08

Power Station	Primary Fuel
CEB Thermal	
Sapugaskanda 1	Heavy Fuel
Sapugaskanda 2	Heavy Fuel
Kelanitissa Small Gas Turbines	Auto Diesel
GT 7 - Kelanitissa	Auto Diesel
Kelanitissa CCY	Naphtha or Diesel
Lakvijaya 1	Coal
Lakvijaya 2	Coal
Lakvijaya 3	Coal
Uthuru Janani	Heavy Fuel
Barge CEB	Heavy Fuel
KCCPS -2	Auto Diesel

Power Station	Primary Fuel
Private Thermal	
West Coast	Auto Diesel / Heavy Fuel
ACE Matara	Heavy Fuel
ACE Embilipitiya	Heavy Fuel

Major Incidents reported during the day

February 15, 2024

- 1). Seethawaka 132/33kV T/F 03, which was tripped on 14/02/2024, restored at 23:02hrs.