

Generation and Reservoirs Statistics

February 14, 2024



PUBLIC UTILITIES COMMISSION OF SRI LANKA

1. Daily Generation Mix in MWh

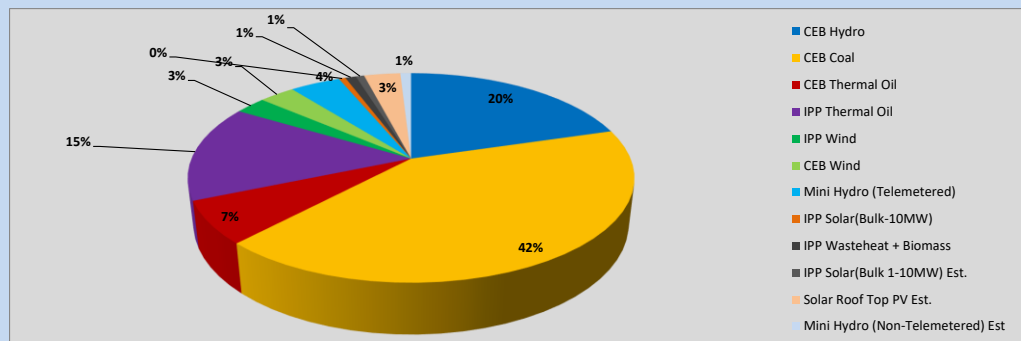


Table 01

	Generation (MWh)
CEB Hydro	9,553
CEB Coal	19,484
CEB Thermal Oil	3,089
IPP Thermal Oil	6,960
IPP Wind	1,261
CEB Wind	1,446
Mini Hydro (Telemetered)	2,041
IPP Solar (Bulk)	272
IPP Waste heat + Biomass	433
Total Generation (Excluding estimated figures)	44,539
* Estimated unserved energy	0
* Estimated Mini Hydro (Non telemetered)	435
* Estimated IPP Solar PV (Bulk 1-10MW)	338
* Estimated Solar Roof Top PV	1470
Total Generation (Including estimated figures)	46,782

* Estimated figures of CEB generation report

Table 02

	Installed Capacity (MW)
CEB Hydro	1644
CEB Coal	810
CEB Thermal Oil	773.1
IPP Thermal Oil (West Coast, ACE Matara and ACE Embilipitiya)	386.9
IPP Wind	163
CEB Wind	100
Mini Hydro	422
IPP Waste heat + Biomass	54
IPP Solar	137
Rooftop Solar (Ordinary)	293
Rooftop Solar (LT Bulk)	272
Rooftop Solar (HT Bulk)	74

Data Source - Monthly Review Report [Aug-2023]

2. Cumulative Dispatch

Following data excludes the contribution from roof top solar, non telemetered solar and mini hydro plants

Table 03 - Current Month

Category	Dispatch (GWh)	
CEB Hydro	157	26.00%
CEB Coal	267	44.37%
CEB Thermal Oil	46	7.56%
IPP Thermal	33	5.43%
SPP Wind	10	1.62%
CEB Wind	12	1.92%
Mini Hydro *	42	7.04%
IPP Solar *	30	5.04%
IPP Waste heat + BMP	6	1.01%
Total	603	

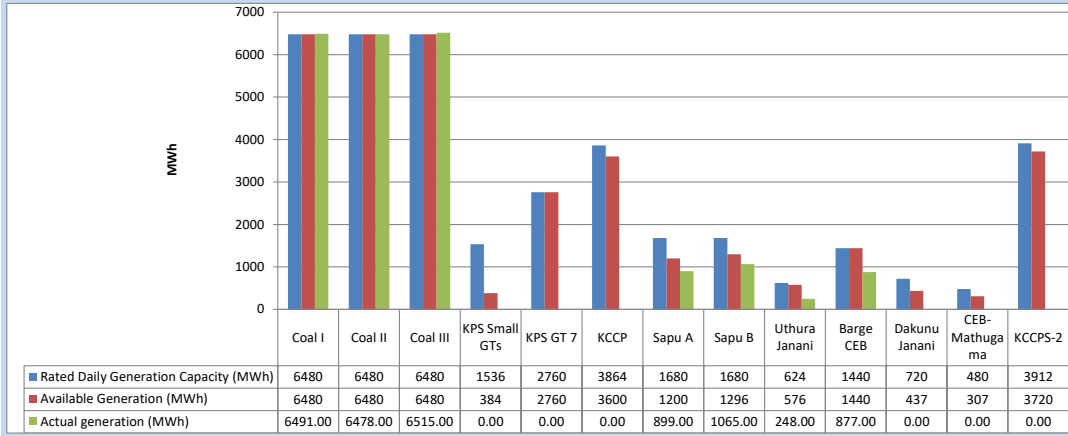
Table 04 - Current Year

Category	Dispatch (GWh)	
CEB Hydro	788	41.50%
CEB Coal	591	31.14%
CEB Thermal Oil	103	5.42%
IPP Thermal	78	4.13%
SPP Wind	26	1.38%
CEB Wind	33	1.76%
Mini Hydro *	162	8.51%
IPP Solar *	100	5.26%
IPP Waste heat	17	0.90%
Total	1,899	

*Including estimated contribution from non telemetered plants

3. CEB owned Thermal Plant Dispatch

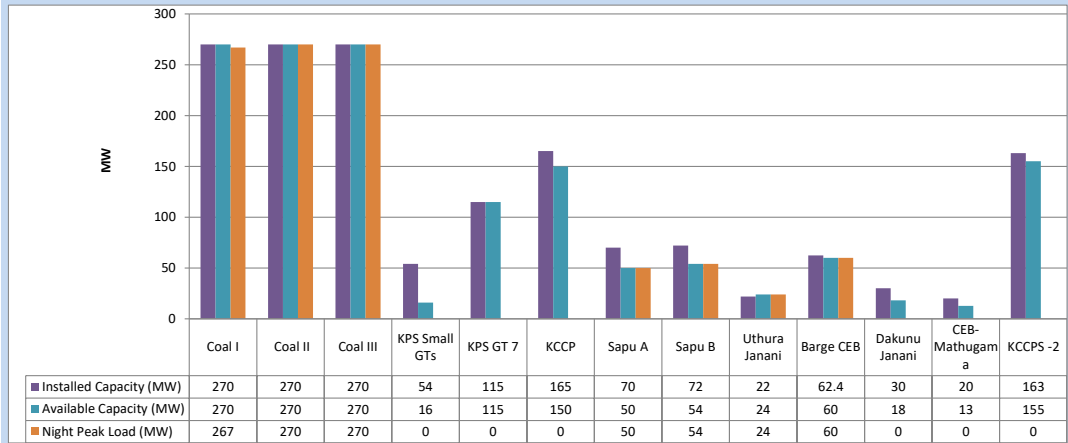
February 14, 2024



Available Generation is estimated based on plant availability at 6.00am on

February 15, 2024

4. CEB owned Thermal Plant Loading at the Night Peak

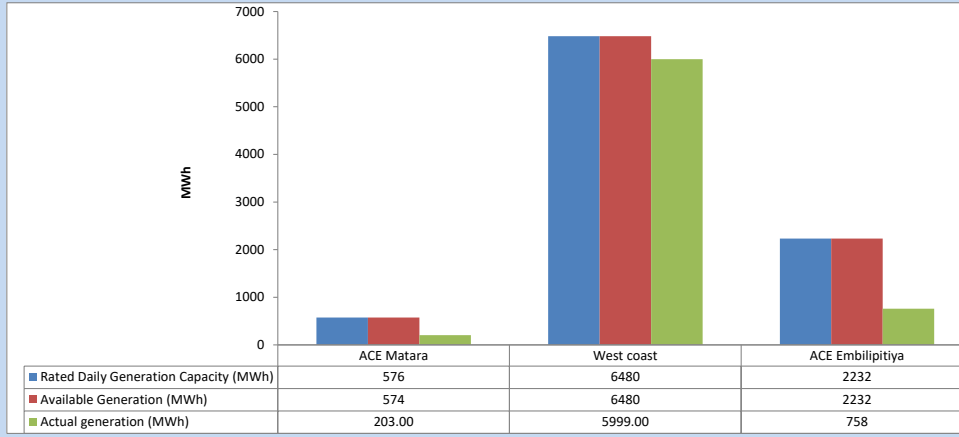


Plant availability is recorded at 6.00 am on

February 15, 2024

5. IPP owned Thermal Plant Dispatch

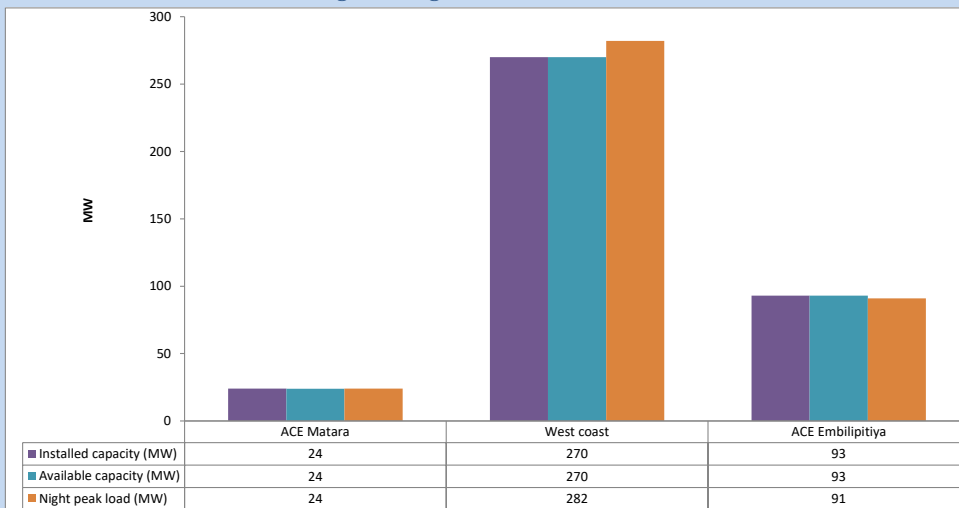
February 14, 2024



Available Generation is estimated based on plant availability at 6.00am on

February 15, 2024

6. IPP owned Thermal Plant Loading at the Night Peak

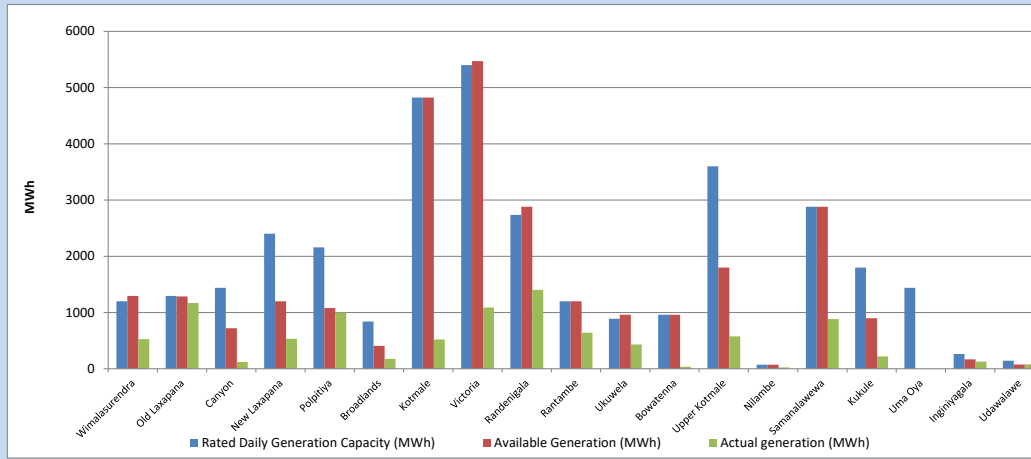


Plant availability is recorded at 6.00 am on

February 15, 2024

7. Major Hydro Plant Dispatch

February 14, 2024

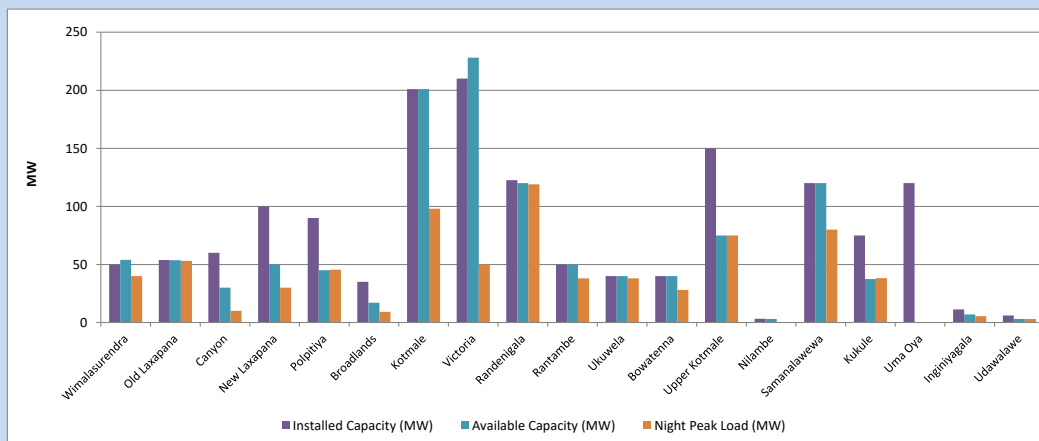


Available Generation is estimated based on plant availability at 6.00am on
Broadlands power plant is operating in the Commissioning Stage

February 15, 2024

8. Major Hydro Plant Loading at Night Peak

February 14, 2024



Plant availability is recorded at 6.00 am on
Broadlands power plant is operating in the Commissioning Stage

February 15, 2024

9. Summary of Major Plant performance

Table 05

Plant	Maximum Available Total Capacity	Plant Availability	Night peak Load	Plant Dispatch
	(MW)	(MW)	(MW)	(MWh)
Wimalasurendra	50	54	40	526
Old Laxapana	54	54	53	1,169
Canyon	60	30	10	120
New Laxapana	100	50	30	534
Polpitiya	90	45	46	1,000
Broadlands	35	17	9	176
Kotmale	201	201	98	520
Victoria	210	228	50	1,088
Randenigala	123	120	119	1,403
Rantambe	50	50	38	642
Ukuwela	40	40	38	431
Bowatenna	40	40	28	36
Upper Kotmale	150	75	75	577
Nilambe	3	3	0	23
Samanalawewa	120	120	80	882
Kukule	75	38	38	221
Uma Oya (Testing)	120	0	0	0
Inginiyagala	11	7	5	127
Udawalawe	6	3	3	78
Puttalam Coal I	270	270	267	6,491
Puttalam Coal II	270	270	270	6,478
Puttalam Coal III	270	270	270	6,515
KPS Small GTs	54	16	0	0
KPS GT 7	115	115	0	0
KCCP	165	150	0	0
Sapugaskanda A	70	50	50	899
Sapugaskanda B	72	54	54	1,065
Uthura Janani	22	24	24	248
Barge CEB	62	60	60	877
CEB-Hambantota	30	18	0	0
CEB-Mathugama	20	13	0	0
ACE Matara	24	24	24	203
Asia Power	50	0	0	0
KCCPS -2	163	155	0	0
West Coast	270	270	282	5,999
Nothern Power	36	0	0	0
ACE Embilipitiya	93	93	91	758
Total	3,594	3,026	2,355	44,539

Note-

Plant availability is the availability recorded at 6 am on

February 15, 2024

Installed Capacity is sourced from CEB Annual Report- 2022

10. Contribution to the Night Peak in MW

February 14, 2024

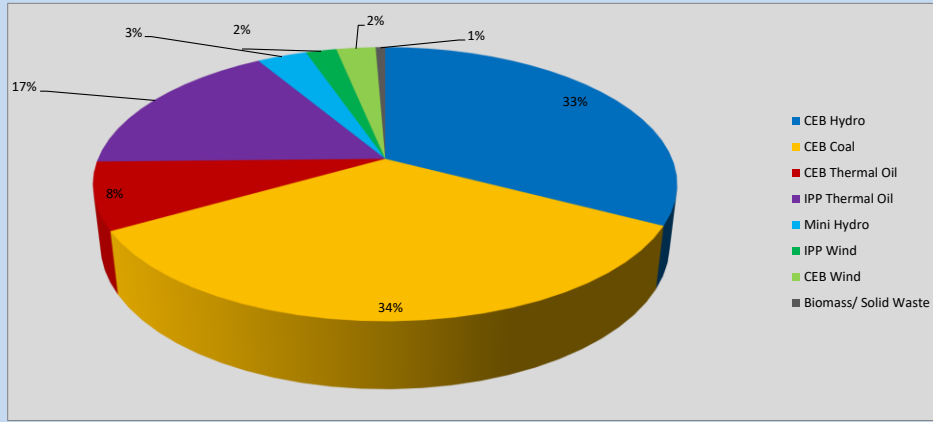


Table 06

CEB Hydro	774	MW
CEB Coal	807	MW
CEB Thermal Oil	188	MW
IPP Thermal Oil	397	MW
Mini Hydro (Telemetered)	78	MW
IPP Wind	48.4	MW
CEB Wind	61.6	MW
Biomass/ Solid Waste	15	MW

Recorded Peak Demand Data

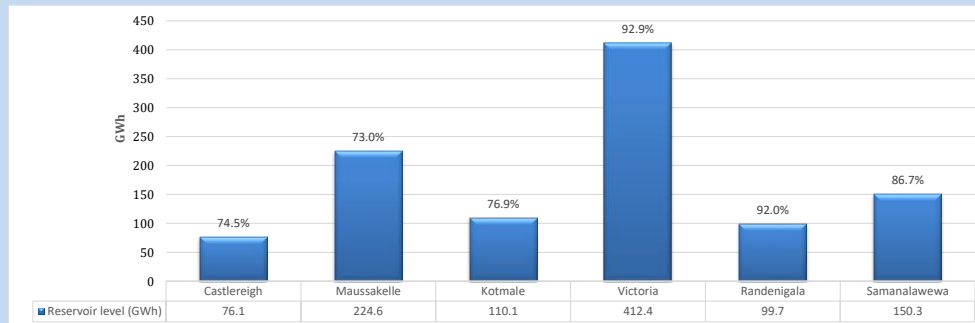
Table 07

Night Peak*	2,369	MW
Day Peak Maximum Demand	2,147	MW
Day Peak Minimum Demand	1,758	MW
Off Peak Minimum Demand	1,398	MW

Above figures are excluding contribution from roof top solar, non telemetered solar and mini hydro plants

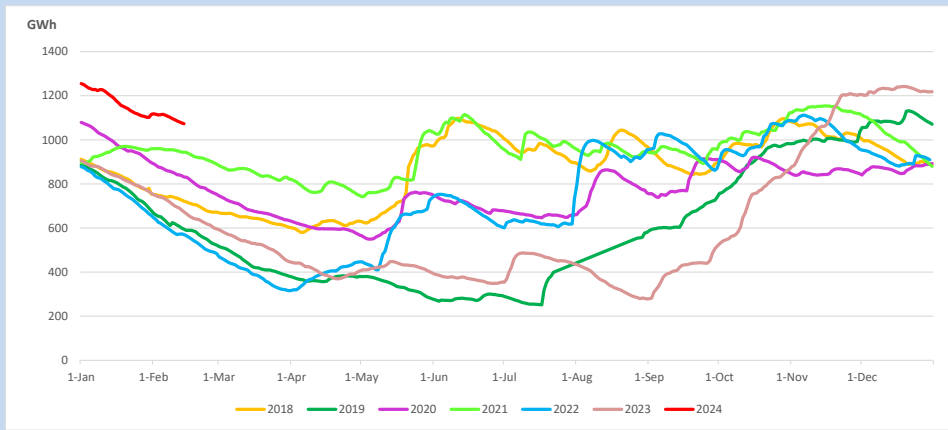
Reservoir Levels -

as at 06.00 Hr on February 15, 2024

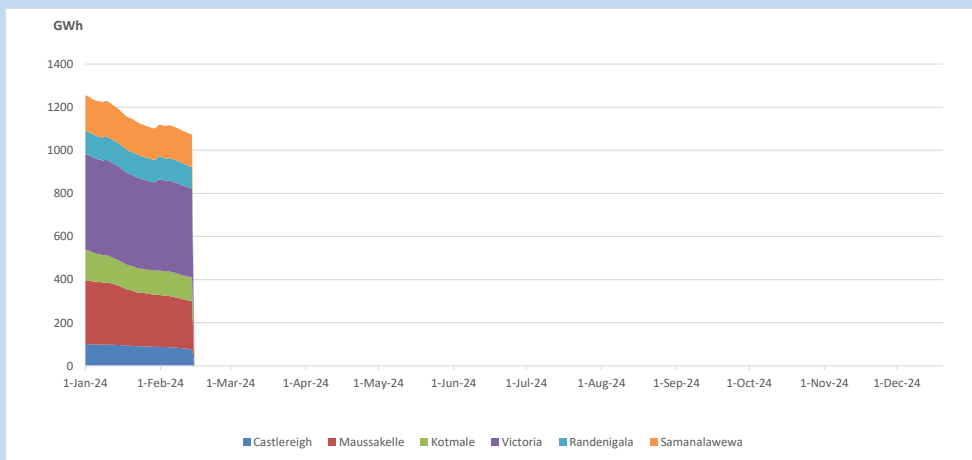


Total Reservoir Level 1073.2 GWh
% of Total capacity 83.9%

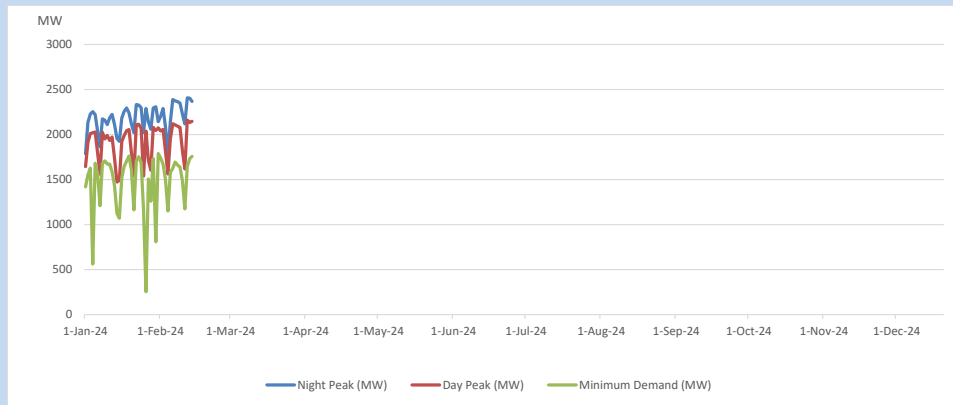
11. Comparison of Total Reservoir Storage Levels with Past Years



12. Variation of Major Hydro Reservoir Levels in the current year (GWh)



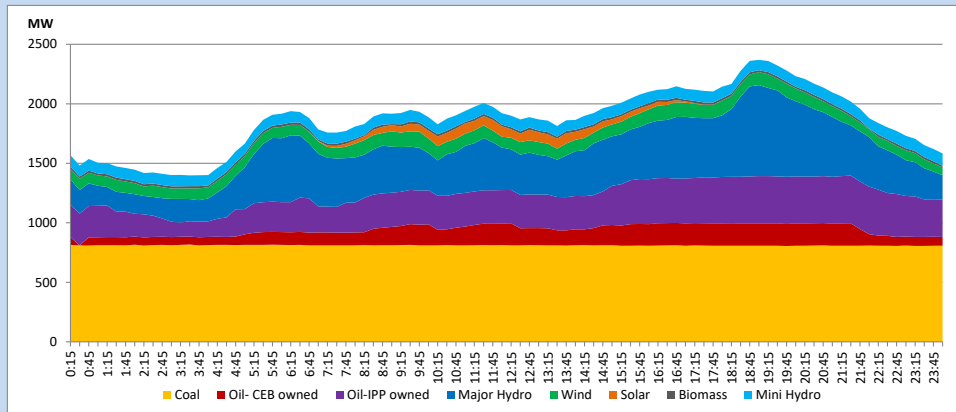
13. Variation of Demand during the current year



The above figures are excluding contribution from roof top solar, non telemetered solar and mini hydro plants

14. Daily Load Curve

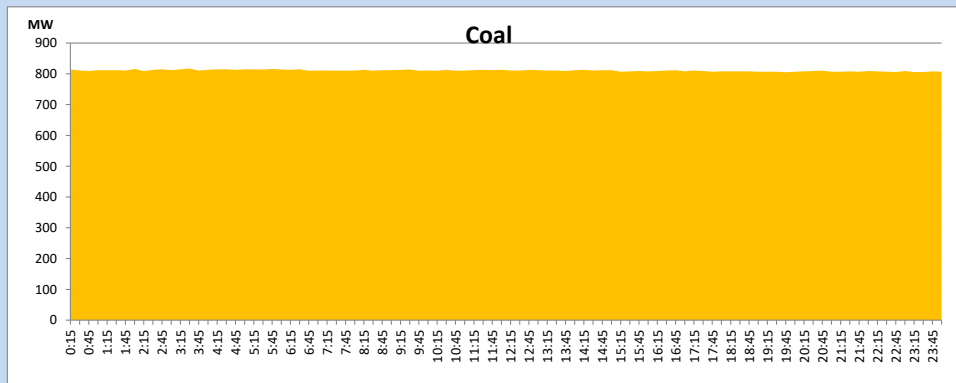
February 14, 2024



Solar and wind data is based on Telemetered Power Stations only

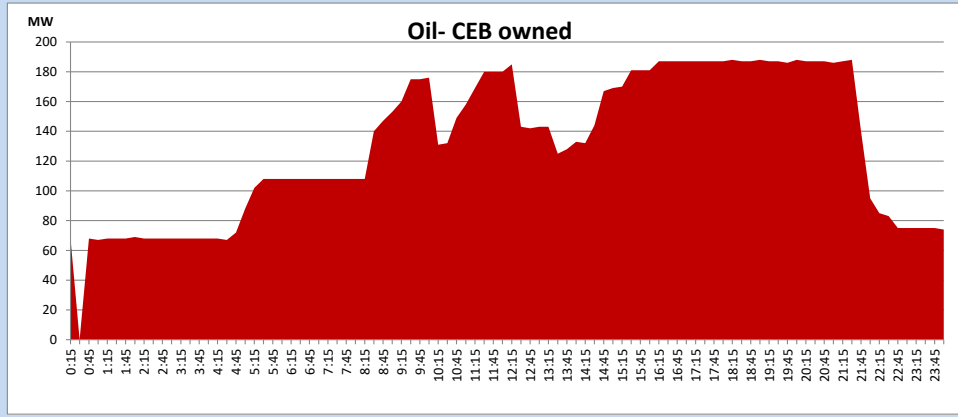
Coal Generation during

February 14, 2024



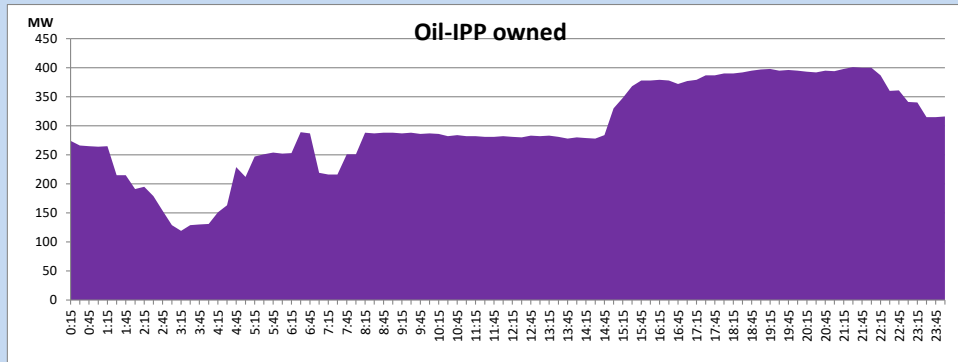
CEB Oil Plant Generation during

February 14, 2024



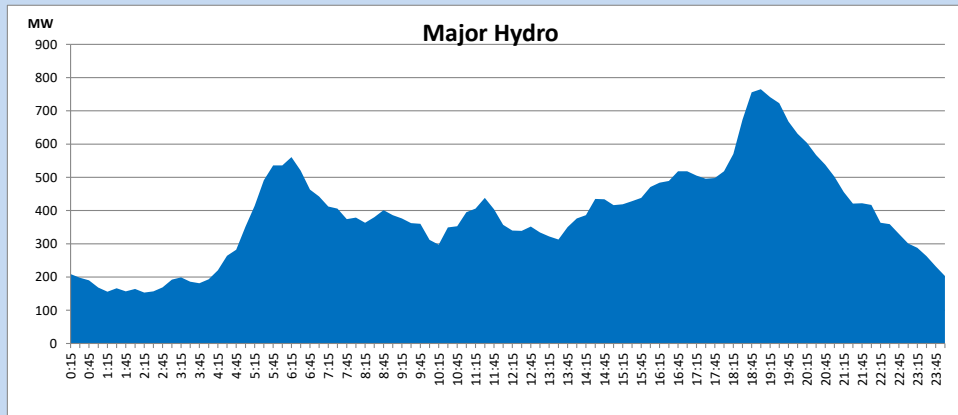
IPP Oil Plant Generation during

February 14, 2024



Major Hydro Generation during

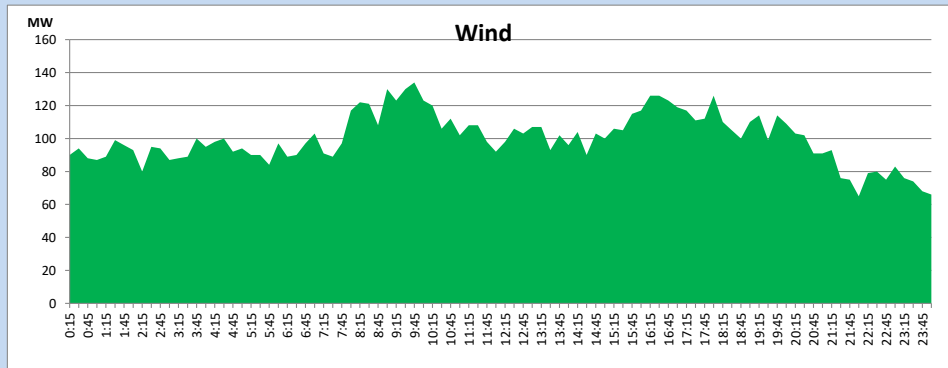
February 14, 2024



Wind Generation during

February 14, 2024

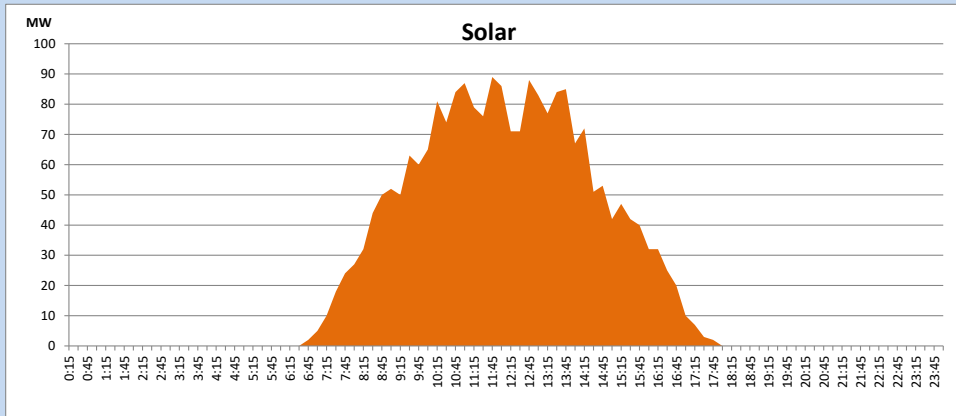
Based on Telemetered Power Stations only



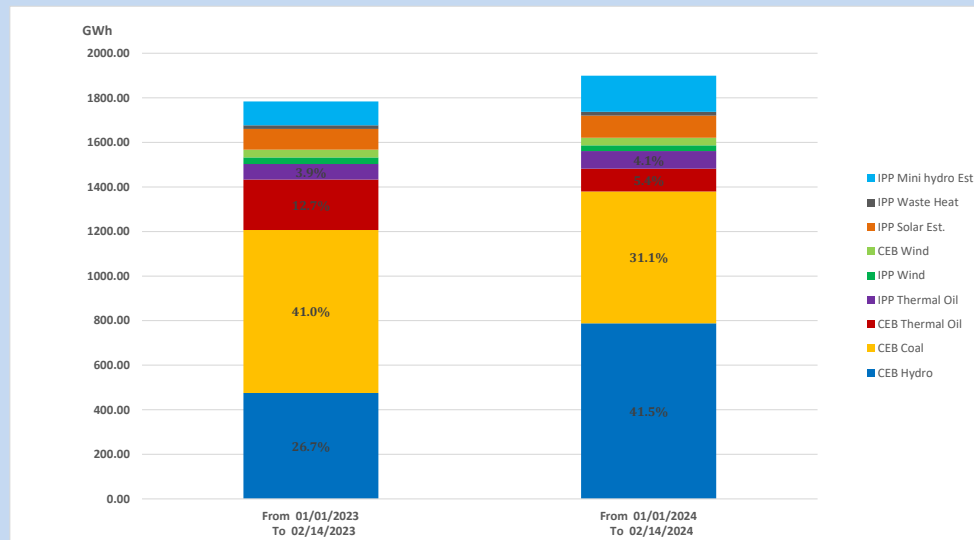
Solar Generation during

February 14, 2024

Based on Telemetered Power Stations only



15. Cumulative Dispatch Comparison with Last Year



Cumulative dispatch

From 01/01/2023 To 02/14/2023

1784 GWh

From 01/01/2024 To 02/14/2024

1899 GWh

The above figures are including contribution from roof top solar, non telemetered solar and mini hydro plants)

Unserviced energy due to power cuts has been excluded in 2023

Thermal Plant Fuel types

Table 08

Power Station	Primary Fuel
CEB Thermal	
Sapugaskanda 1	Heavy Fuel
Sapugaskanda 2	Heavy Fuel
Kelanitissa Small Gas Turbines	Auto Diesel
GT 7 - Kelanitissa	Auto Diesel
Kelanitissa CCY	Naphtha or Diesel
Lakvijaya 1	Coal
Lakvijaya 2	Coal
Lakvijaya 3	Coal
Uthuru Janani	Heavy Fuel
Barge CEB	Heavy Fuel
KCCPS -2	Auto Diesel

Power Station	Primary Fuel
Private Thermal	
West Coast	Auto Diesel / Heavy Fuel
ACE Matara	Heavy Fuel
ACE Embilipitiya	Heavy Fuel

Major Incidents reported during the day

February 14, 2024

- 1) Old Habarana - New Anuradhapura 132kV cct 01 which tripped on 13.02.2024, was normalized at 18:22hrs.
- 2) Trinco GSS 132/33kV T/F 01 which tripped on 13.02.2024, was normalized at 18:08hrs.