

Generation and Reservoirs Statistics

February 12, 2024



PUBLIC UTILITIES COMMISSION OF SRI LANKA

1. Daily Generation Mix in MWh

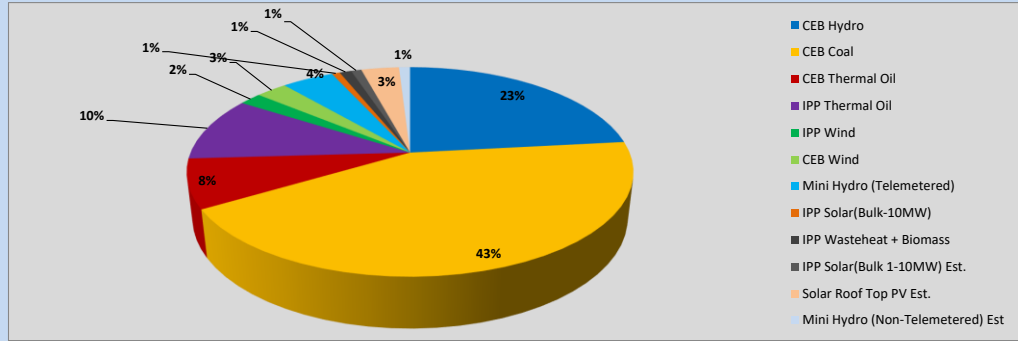


Table 01

	Generation (MWh)
CEB Hydro	10,463
CEB Coal	19,405
CEB Thermal Oil	3,407
IPP Thermal Oil	4,473
IPP Wind	869
CEB Wind	1,208
Mini Hydro (Telemetered)	2,015
IPP Solar (Bulk)	315
IPP Waste heat + Biomass	457
Total Generation (Excluding estimated figures)	42,612
* Estimated unserved energy	0
* Estimated Mini Hydro (Non telemetered)	429
* Estimated IPP Solar PV (Bulk 1-10MW)	403
* Estimated Solar Roof Top PV	1470
Total Generation (Including estimated figures)	44,914

* Estimated figures of CEB generation report

Table 02

	Installed Capacity (MW)
CEB Hydro	1409
CEB Coal	810
CEB Thermal Oil	781
IPP Thermal Oil (West Coast, ACE Matara and ACE Embilipitiya)	387
IPP Wind	148
CEB Wind	100
Mini Hydro	422
IPP Waste heat + Biomass	50
IPP Solar	136
Rooftop Solar (Ordinary)	277
Rooftop Solar (LT Bulk)	263
Rooftop Solar (HT Bulk)	70

Data Source - Monthly Review Report [Aug-2023]

2. Cumulative Dispatch

Following data excludes the contribution from roof top solar, non telemetered solar and mini hydro plants

Table 03 - Current Month

Category	Dispatch (GWh)	
CEB Hydro	138	26.98%
CEB Coal	228	44.82%
CEB Thermal Oil	39	7.67%
IPP Thermal	19	3.73%
SPP Wind	8	1.50%
CEB Wind	9	1.75%
Mini Hydro *	38	7.38%
IPP Solar *	26	5.13%
IPP Waste heat + BMP	5	1.03%
Total	510	

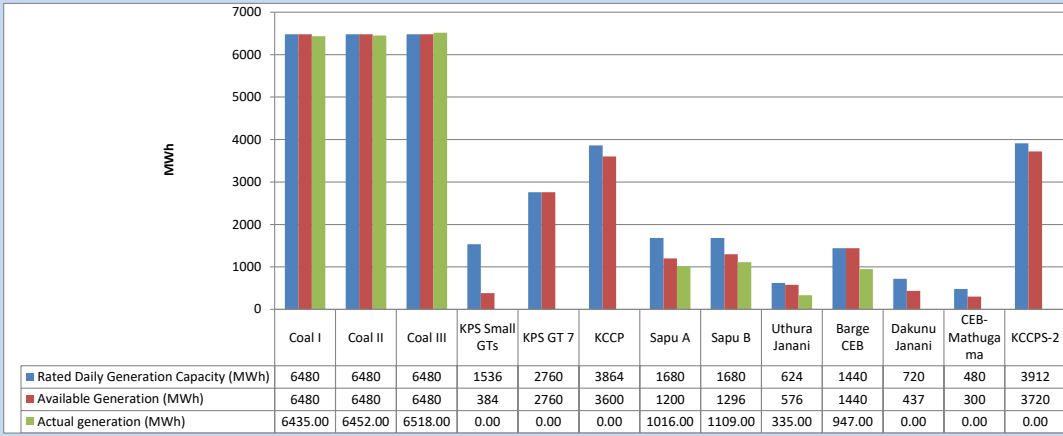
Table 04 - Current Year

Category	Dispatch (GWh)	
CEB Hydro	769	42.57%
CEB Coal	552	30.58%
CEB Thermal Oil	97	5.35%
IPP Thermal	65	3.58%
SPP Wind	24	1.34%
CEB Wind	31	1.71%
Mini Hydro *	157	8.68%
IPP Solar *	96	5.29%
IPP Waste heat	16	0.90%
Total	1,806	

*Including estimated contribution from non telemetered plants

3. CEB owned Thermal Plant Dispatch

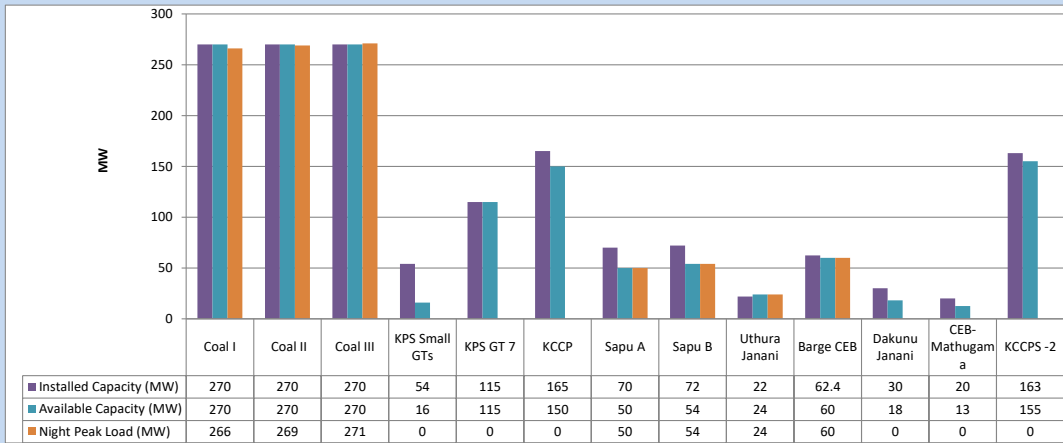
February 12, 2024



Available Generation is estimated based on plant availability at 6.00am on

February 13, 2024

4. CEB owned Thermal Plant Loading at the Night Peak

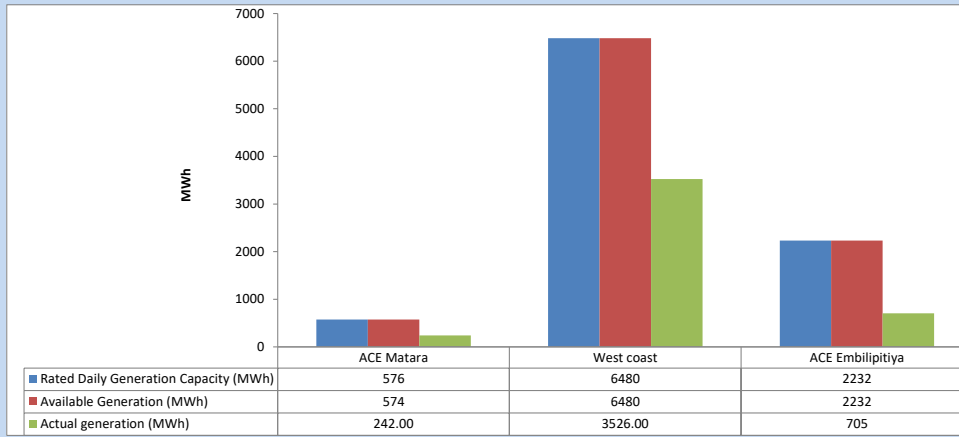


Plant availability is recorded at 6.00 am on

February 13, 2024

5. IPP owned Thermal Plant Dispatch

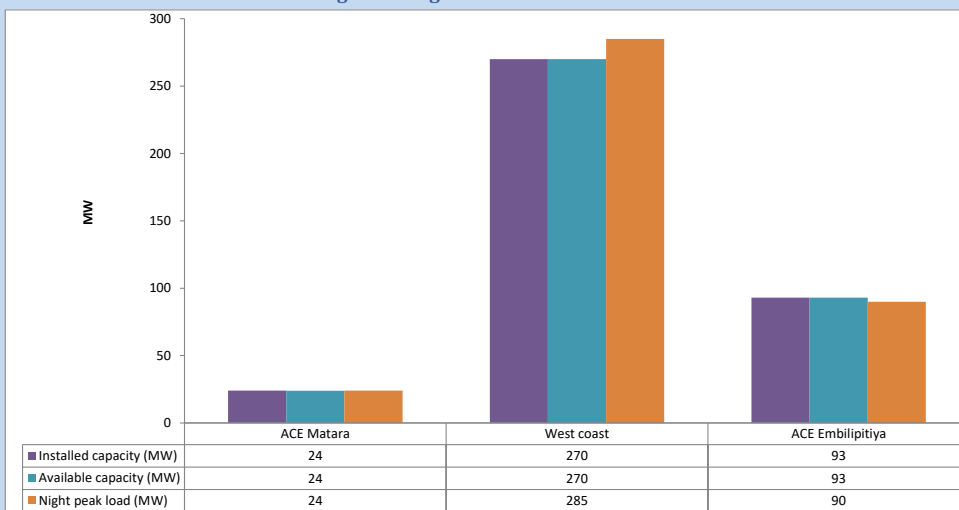
February 12, 2024



Available Generation is estimated based on plant availability at 6.00am on

February 13, 2024

6. IPP owned Thermal Plant Loading at the Night Peak

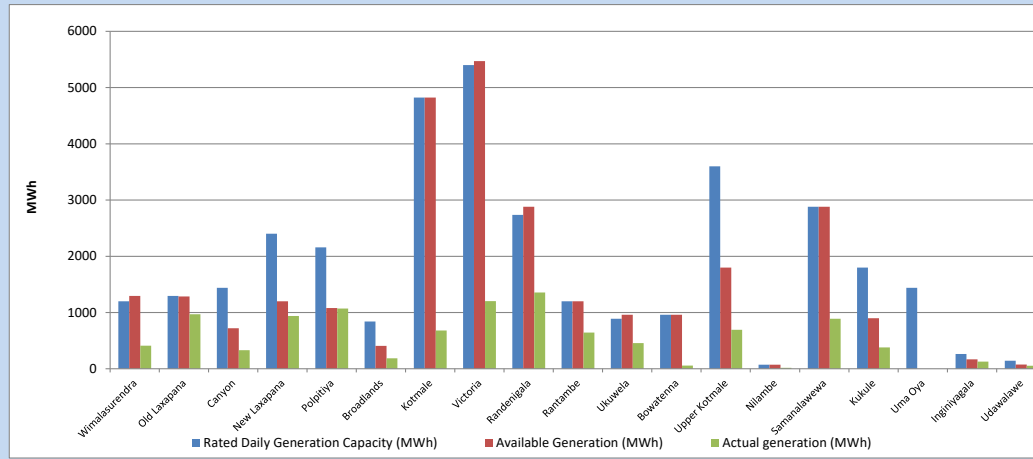


Plant availability is recorded at 6.00 am on

February 13, 2024

7. Major Hydro Plant Dispatch

February 12, 2024

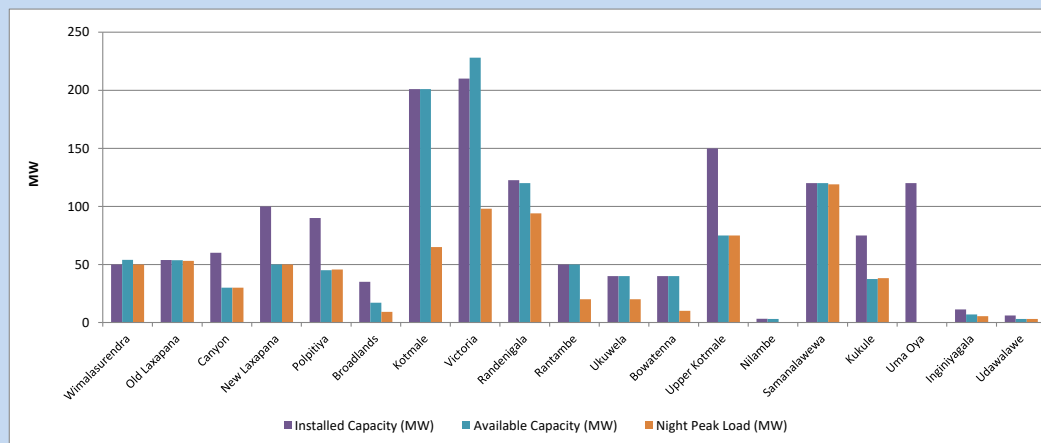


Available Generation is estimated based on plant availability at 6.00am on
Broadlands power plant is operating in the Commissioning Stage

February 13, 2024

8. Major Hydro Plant Loading at Night Peak

February 12, 2024



Plant availability is recorded at 6.00 am on
Broadlands power plant is operating in the Commissioning Stage

February 13, 2024

9. Summary of Major Plant performance

Table 05

Plant	Maximum Available Total Capacity	Plant Availability	Night peak Load	Plant Dispatch
	(MW)	(MW)	(MW)	(MWh)
Wimalasurendra	50	54	50	409
Old Laxapana	54	54	53	970
Canyon	60	30	30	330
New Laxapana	100	50	50	940
Polpitiya	90	45	46	1,070
Broadlands	35	17	9	185
Kotmale	201	201	65	680
Victoria	210	228	98	1,203
Randenigala	123	120	94	1,357
Rantambe	50	50	20	645
Ukuwela	40	40	20	456
Bowatenna	40	40	10	58
Upper Kotmale	150	75	75	693
Nilambe	3	3	0	18
Samanalawewa	120	120	119	888
Kukule	75	38	38	379
Uma Oya (Testing)	120	0	0	0
Inginiyagala	11	7	5	127
Udawalawe	6	3	3	55
Puttalam Coal I	270	270	266	6,435
Puttalam Coal II	270	270	269	6,452
Puttalam Coal III	270	270	271	6,518
KPS Small GTs	54	16	0	0
KPS GT 7	115	115	0	0
KCCP	165	150	0	0
Sapugaskanda A	70	50	50	1,016
Sapugaskanda B	72	54	54	1,109
Uthura Janani	22	24	24	335
Barge CEB	62	60	60	947
CEB-Hambantota	30	18	0	0
CEB-Mathugama	20	13	0	0
ACE Matara	24	24	24	242
Asia Power	50	0	0	0
KCCPS -2	163	155	0	0
West Coast	270	270	285	3,526
Nothern Power	36	0	0	0
ACE Embilipitiya	93	93	90	705
Total	3,594	3,026	2,377	42,612

Note-

Plant availability is the availability recorded at 6 am on

February 13, 2024

Installed Capacity is sourced from CEB Annual Report- 2022

10. Contribution to the Night Peak in MW

February 12, 2024

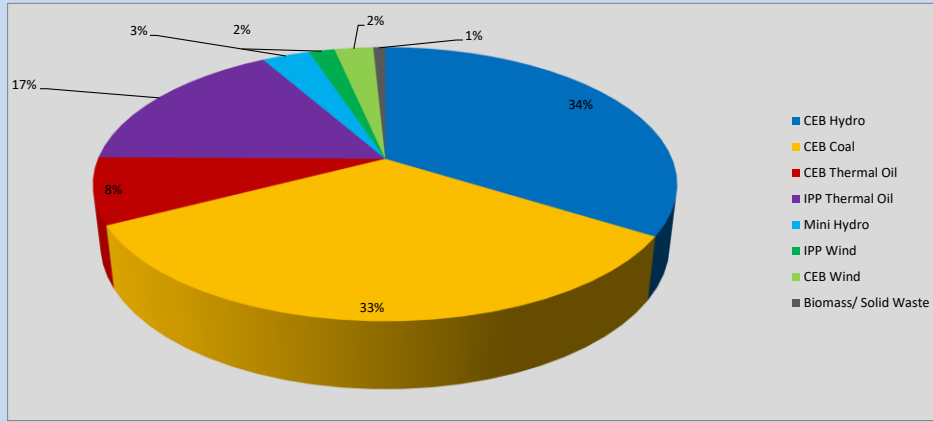


Table 06

CEB Hydro	816	MW
CEB Coal	806	MW
CEB Thermal Oil	188	MW
IPP Thermal Oil	399	MW
Mini Hydro (Telemetered)	76	MW
IPP Wind	41.1	MW
CEB Wind	61.8	MW
Biomass/ Solid Waste	19	MW

Recorded Peak Demand Data

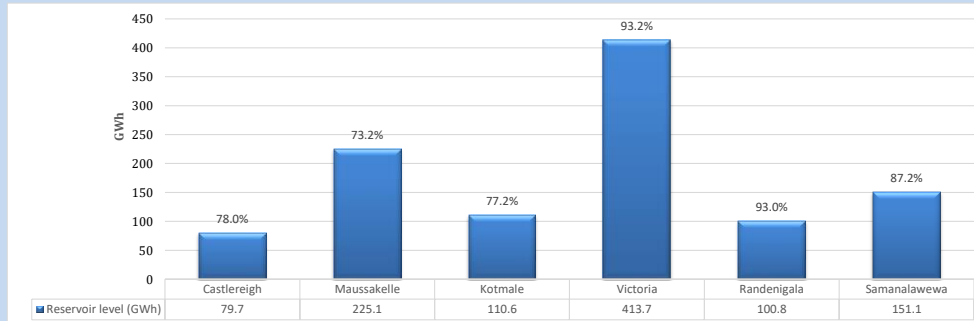
Table 07

Night Peak*	2,407	MW
Day Peak Maximum Demand	2,160	MW
Day Peak Minimum Demand	1,643	MW
Off Peak Minimum Demand	1,255	MW

Above figures are excluding contribution from roof top solar, non telemetered solar and mini hydro plants

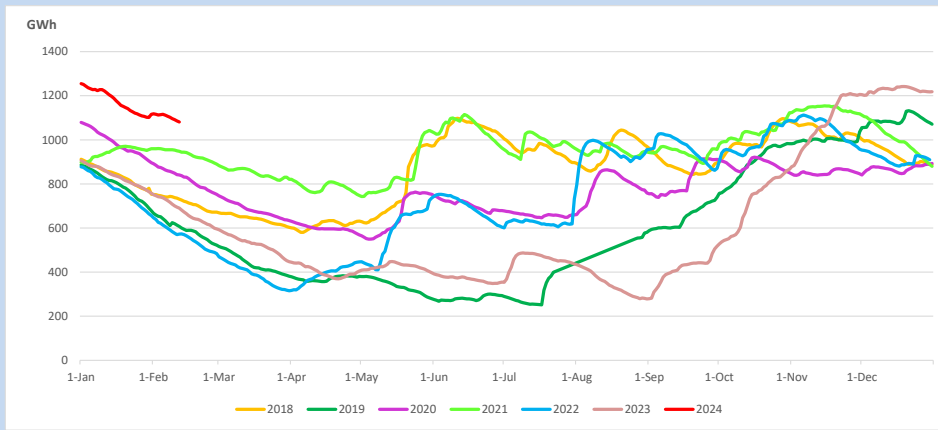
Reservoir Levels -

as at 06.00 Hr on February 13, 2024

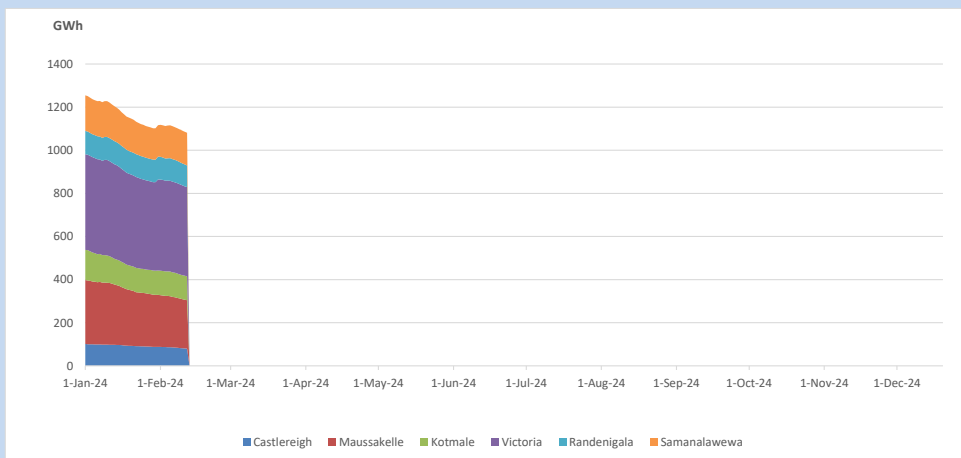


Total Reservoir Level 1081 GWh
 % of Total capacity 84.6%

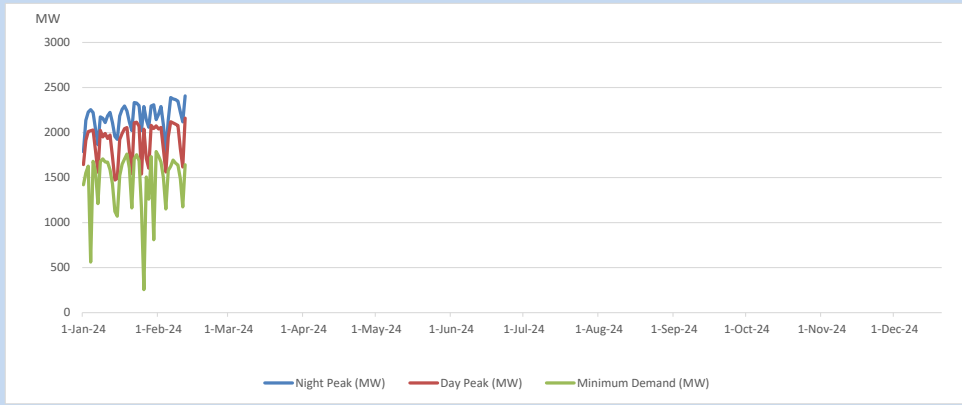
11. Comparison of Total Reservoir Storage Levels with Past Years



12. Variation of Major Hydro Reservoir Levels in the current year (GWh)



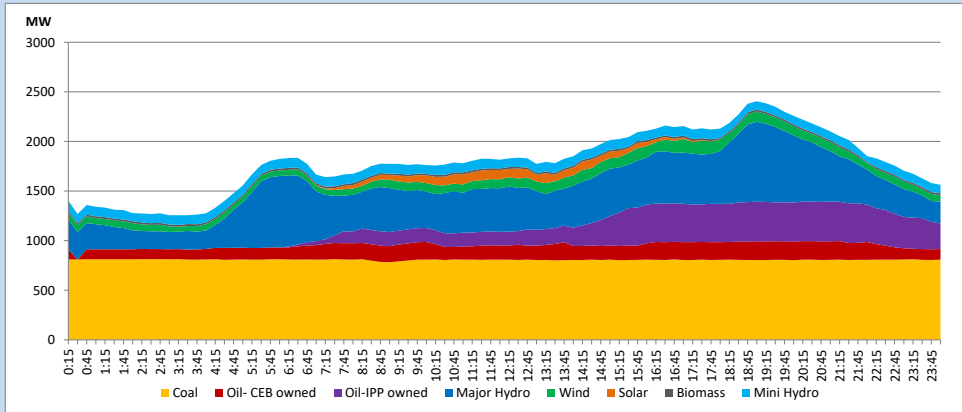
13. Variation of Demand during the current year



The above figures are excluding contribution from roof top solar, non telemetered solar and mini hydro plants

14. Daily Load Curve

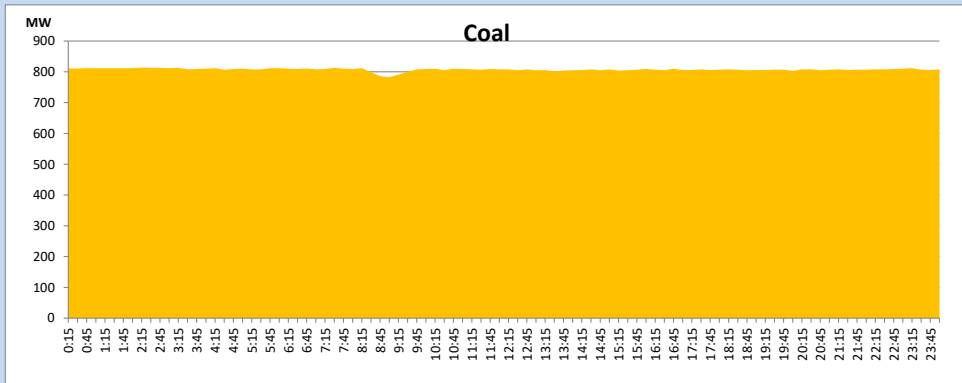
February 12, 2024



Solar and wind data is based on Telemetered Power Stations only

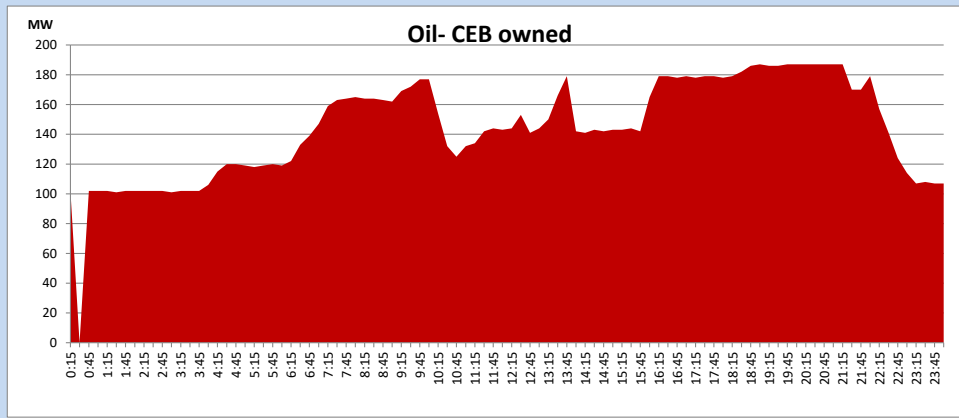
Coal Generation during

February 12, 2024



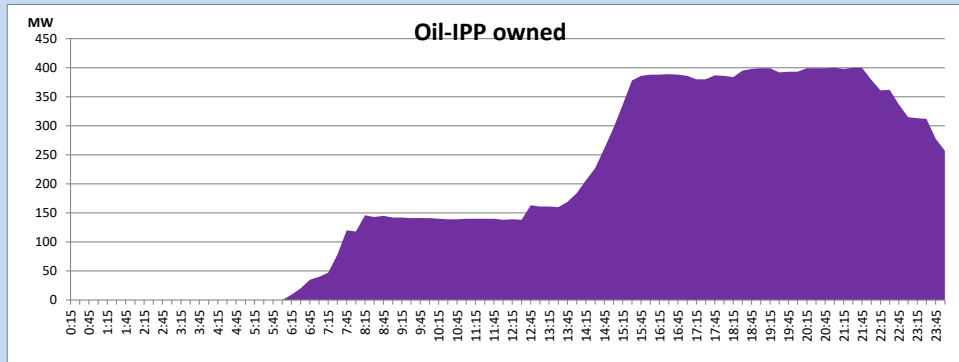
CEB Oil Plant Generation during

February 12, 2024



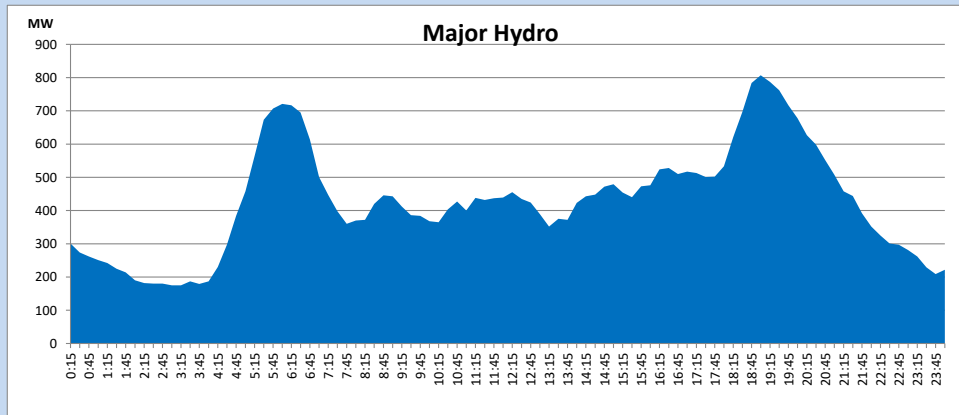
IPP Oil Plant Generation during

February 12, 2024



Major Hydro Generation during

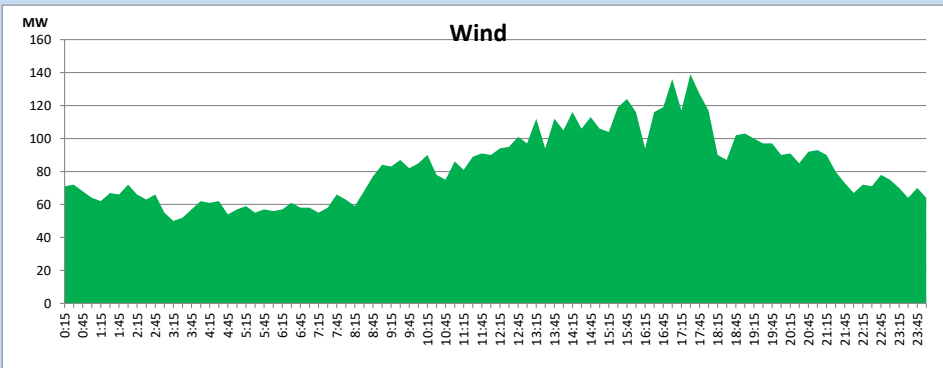
February 12, 2024



Wind Generation during

February 12, 2024

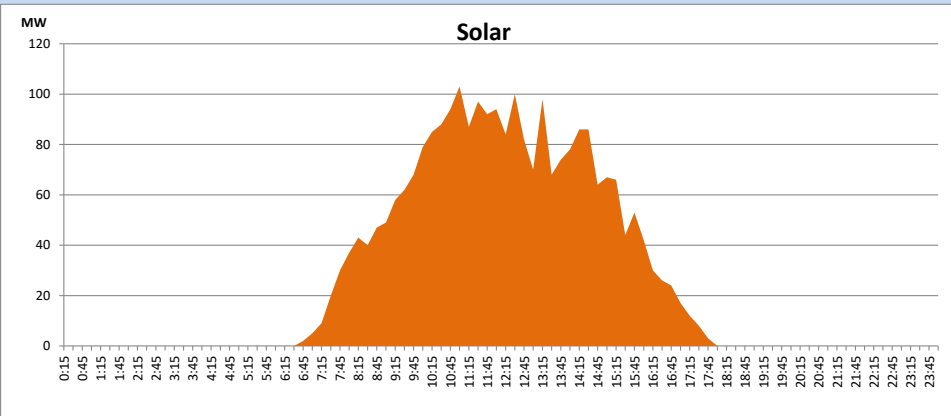
Based on Telemetered Power Stations only



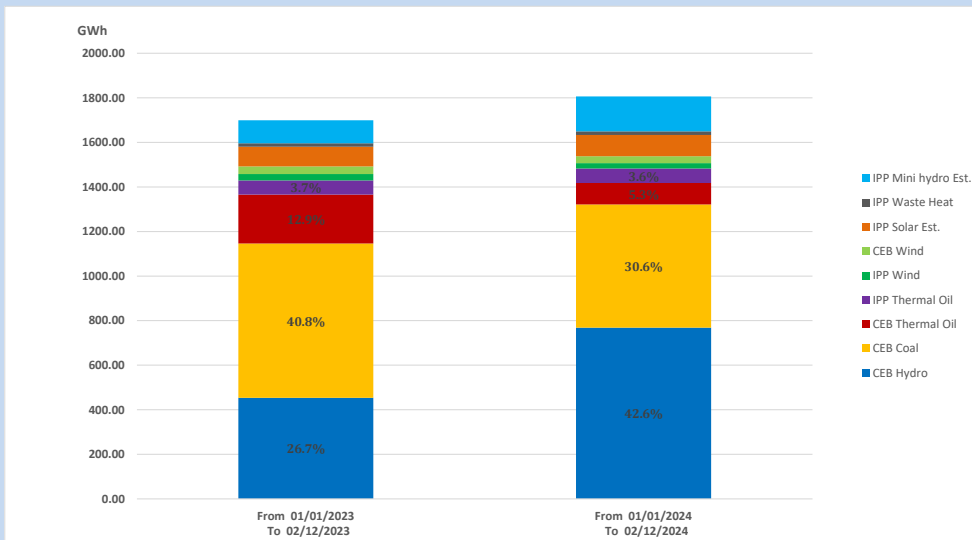
Solar Generation during

February 12, 2024

Based on Telemetered Power Stations only



15. Cumulative Dispatch Comparison with Last Year



Cumulative dispatch
 From 01/01/2023 To 02/12/2023
 From 01/01/2024 To 02/12/2024

1699 GWh
 1806 GWh

The above figures are including contribution from roof top solar, non telemetered solar and mini hydro plants)
 Unserved energy due to power cuts has been excluded in 2023

Thermal Plant Fuel types

Table 08

Power Station	Primary Fuel
CEB Thermal	
Sapugaskanda 1	Heavy Fuel
Sapugaskanda 2	Heavy Fuel
Kelanitissa Small Gas Turbines	Auto Diesel
GT 7 - Kelanitissa	Auto Diesel
Kelanitissa CCY	Naphtha or Diesel
Lakvijaya 1	Coal
Lakvijaya 2	Coal
Lakvijaya 3	Coal
Uthuru Janani	Heavy Fuel
Barge CEB	Heavy Fuel
KCCPS -2	Auto Diesel

Power Station	Primary Fuel
Private Thermal	
West Coast	Auto Diesel / Heavy Fuel
ACE Matara	Heavy Fuel
ACE Embilipitiya	Heavy Fuel

Major Incidents reported during the day

February 12, 2024

- 1) Kelanithissa-Power Barge cable which tripped on 10.02.2024 was restored and the plant resumed generation by 07:36hrs.