

Generation and Reservoirs Statistics

February 11, 2024



PUBLIC UTILITIES COMMISSION OF SRI LANKA

1. Daily Generation Mix in MWh

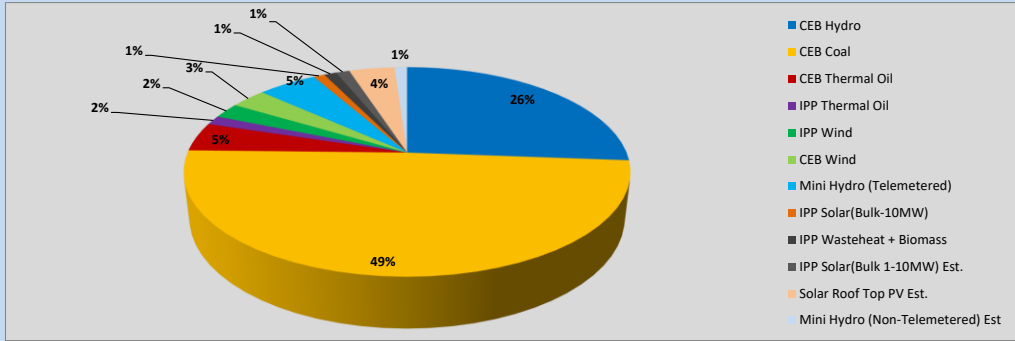


Table 01

	Generation (MWh)
CEB Hydro	9,783
CEB Coal	18,366
CEB Thermal Oil	1,661
IPP Thermal Oil	527
IPP Wind	881
CEB Wind	1,155
Mini Hydro (Telemetered)	1,908
IPP Solar (Bulk)	363
IPP Waste heat + Biomass	395
Total Generation (Excluding estimated figures)	35,039
* Estimated unserved energy	0
* Estimated Mini Hydro (Non telemetered)	407
* Estimated IPP Solar PV (Bulk 1-10MW)	439
* Estimated Solar Roof Top PV	1470
Total Generation (Including estimated figures)	37,355

* Estimated figures of CEB generation report

Table 02

	Installed Capacity (MW)
CEB Hydro	1409
CEB Coal	810
CEB Thermal Oil	781
IPP Thermal Oil (West Coast, ACE Matara and ACE Embilipitiya)	387
IPP Wind	148
CEB Wind	100
Mini Hydro	422
IPP Waste heat + Biomass	50
IPP Solar	136
Rooftop Solar (Ordinary)	277
Rooftop Solar (LT Bulk)	263
Rooftop Solar (HT Bulk)	70

Data Source - Monthly Review Report [Aug-2023]

2. Cumulative Dispatch

Following data excludes the contribution from roof top solar, non telemetered solar and mini hydro plants

Table 03 - Current Month

Category	Dispatch (GWh)	
CEB Hydro	127	27.34%
CEB Coal	209	44.97%
CEB Thermal Oil	36	7.68%
IPP Thermal	15	3.13%
SPP Wind	7	1.46%
CEB Wind	8	1.66%
Mini Hydro *	35	7.57%
IPP Solar *	24	5.16%
IPP Waste heat + BMP	5	1.03%
Total	465	

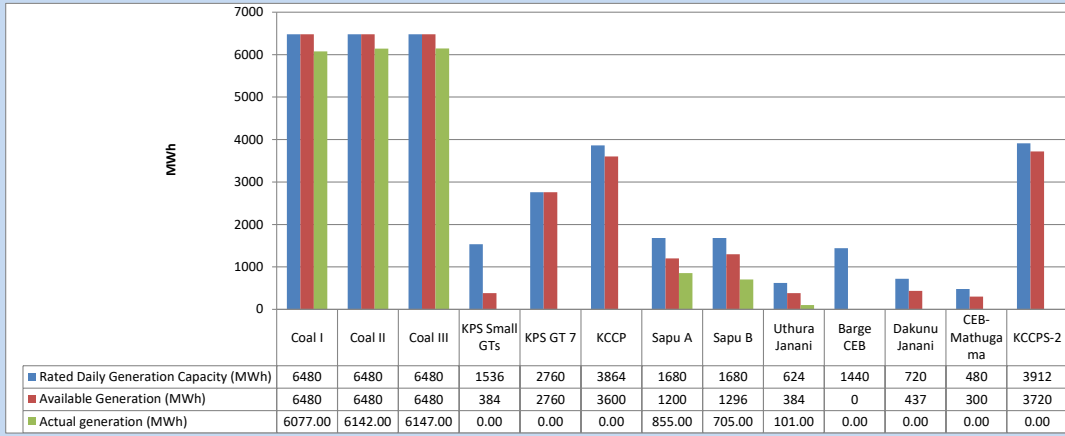
Table 04 - Current Year

Category	Dispatch (GWh)	
CEB Hydro	758	43.06%
CEB Coal	533	30.26%
CEB Thermal Oil	93	5.29%
IPP Thermal	60	3.42%
SPP Wind	23	1.32%
CEB Wind	30	1.68%
Mini Hydro *	154	8.76%
IPP Solar *	93	5.31%
IPP Waste heat	16	0.90%
Total	1,761	

*Including estimated contribution from non telemetered plants

3. CEB owned Thermal Plant Dispatch

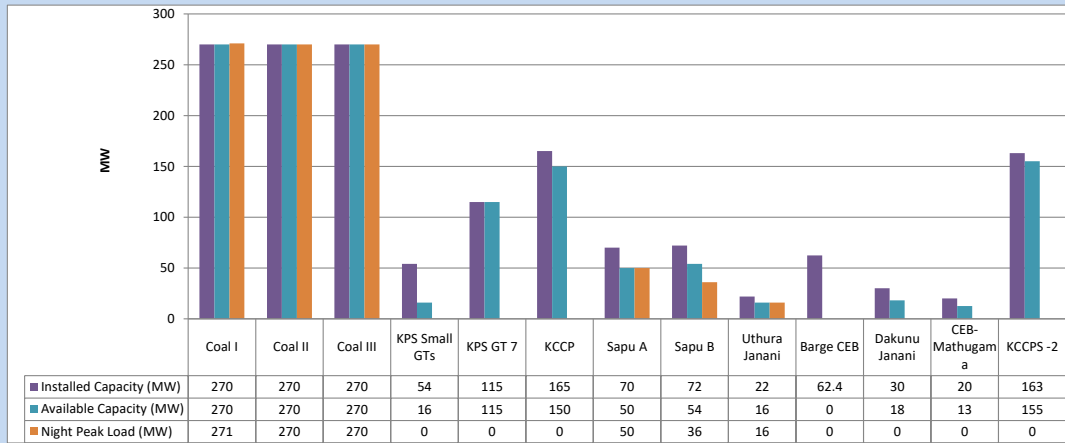
February 11, 2024



Available Generation is estimated based on plant availability at 6.00am on

February 12, 2024

4. CEB owned Thermal Plant Loading at the Night Peak

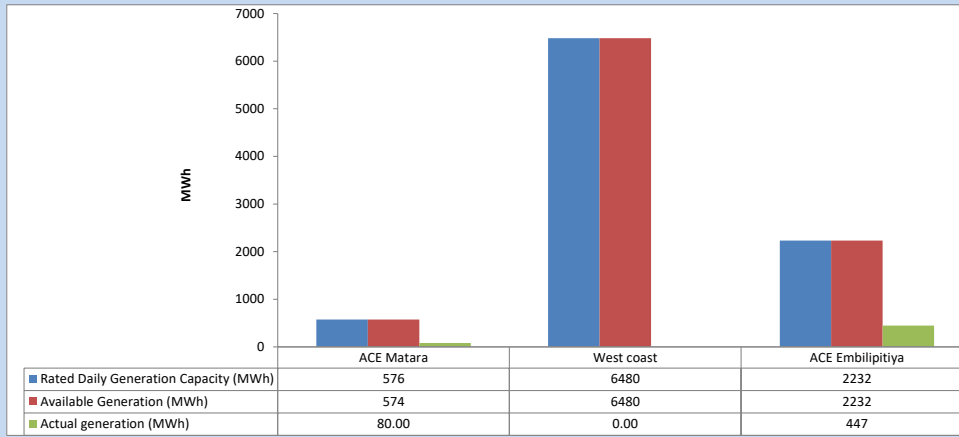


Plant availability is recorded at 6.00 am on

February 12, 2024

5. IPP owned Thermal Plant Dispatch

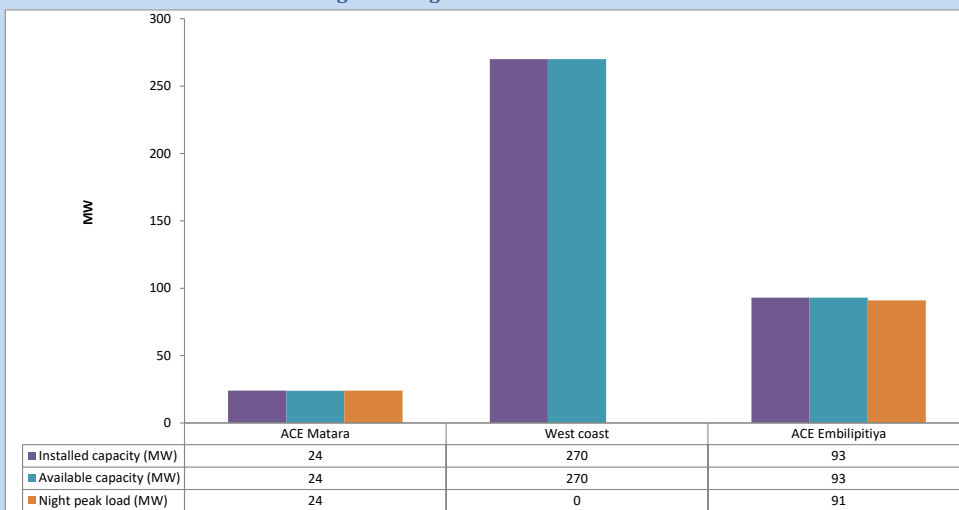
February 11, 2024



Available Generation is estimated based on plant availability at 6.00am on

February 12, 2024

6. IPP owned Thermal Plant Loading at the Night Peak

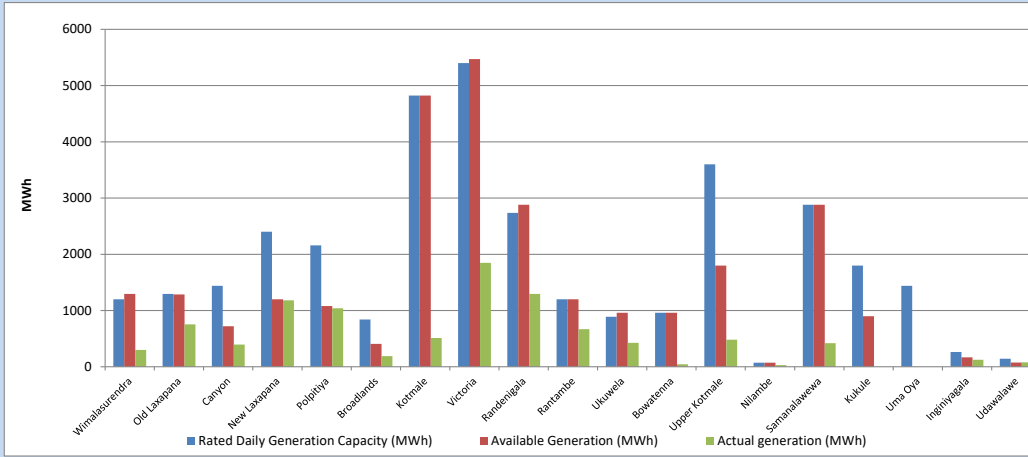


Plant availability is recorded at 6.00 am on

February 12, 2024

7. Major Hydro Plant Dispatch

February 11, 2024

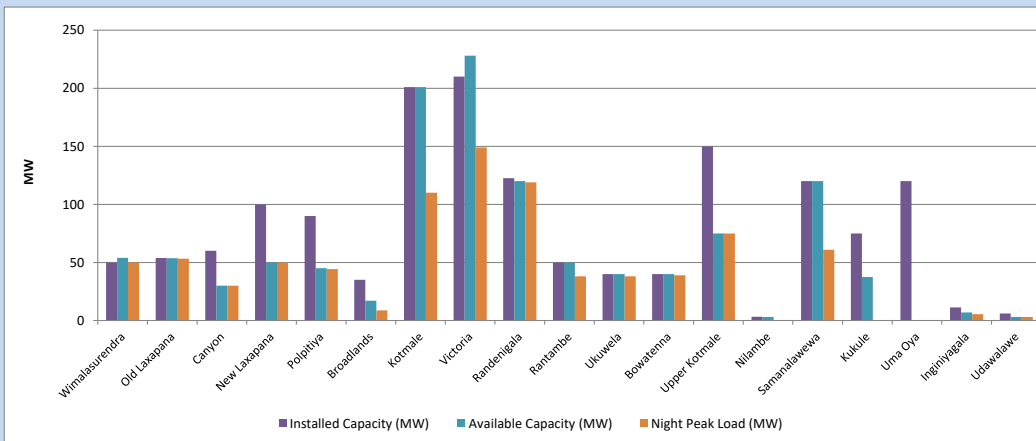


Available Generation is estimated based on plant availability at 6.00am on
Broadlands power plant is operating in the Commissioning Stage

February 12, 2024

8. Major Hydro Plant Loading at Night Peak

February 11, 2024



Plant availability is recorded at 6.00 am on
Broadlands power plant is operating in the Commissioning Stage

February 12, 2024

9. Summary of Major Plant performance

Table 05

Plant	Maximum Available Total Capacity	Plant Availability	Night peak Load	Plant Dispatch
	(MW)	(MW)	(MW)	(MWh)
Wimalasurendra	50	54	50	301
Old Laxapana	54	54	53	754
Canyon	60	30	30	396
New Laxapana	100	50	50	1,182
Polpitiya	90	45	44	1,040
Broadlands	35	17	9	189
Kotmale	201	201	110	510
Victoria	210	228	149	1,849
Randenigala	123	120	119	1,296
Rantambe	50	50	38	668
Ukuwela	40	40	38	424
Bowatenna	40	40	39	43
Upper Kotmale	150	75	75	481
Nilambe	3	3	0	30
Samanalawewa	120	120	61	418
Kukule	75	38	0	0
Uma Oya (Testing)	120	0	0	0
Inginiyagala	11	7	5	124
Udawalawe	6	3	3	78
Puttalam Coal I	270	270	271	6,077
Puttalam Coal II	270	270	270	6,142
Puttalam Coal III	270	270	270	6,147
KPS Small GTs	54	16	0	0
KPS GT 7	115	115	0	0
KCCP	165	150	0	0
Sapugaskanda A	70	50	50	855
Sapugaskanda B	72	54	36	705
Uthura Janani	22	16	16	101
Barge CEB	62	0	0	0
CEB-Hambantota	30	18	0	0
CEB-Mathugama	20	13	0	0
ACE Matara	24	24	24	80
Asia Power	50	0	0	0
KCCPS -2	163	155	0	0
West Coast	270	270	0	0
Nothern Power	36	0	0	0
ACE Embilipitiya	93	93	91	447
Total	3,594	2,958	2,106	35,039

Note-

Plant availability is the availability recorded at 6 am on

February 12, 2024

Installed Capacity is sourced from CEB Annual Report- 2022

10. Contribution to the Night Peak in MW

February 11, 2024

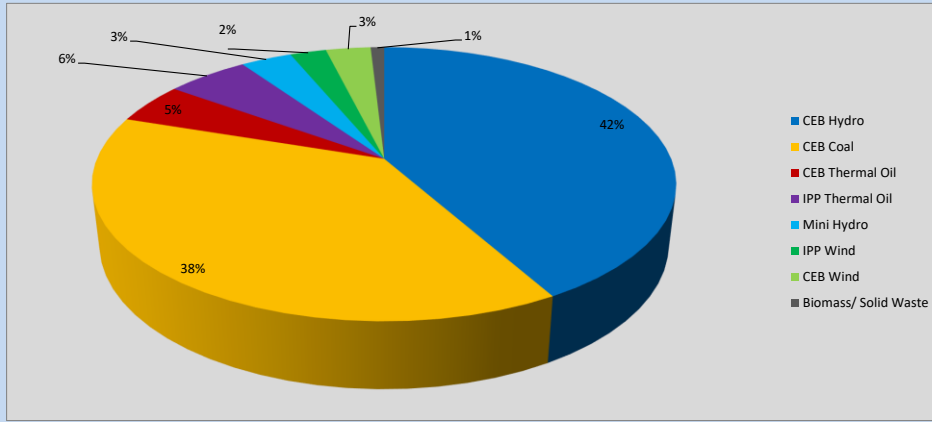


Table 06

CEB Hydro	885	MW
CEB Coal	811	MW
CEB Thermal Oil	102	MW
IPP Thermal Oil	115	MW
Mini Hydro (Telemetered)	72	MW
IPP Wind	50.7	MW
CEB Wind	62.8	MW
Biomass/ Solid Waste	19	MW

Recorded Peak Demand Data

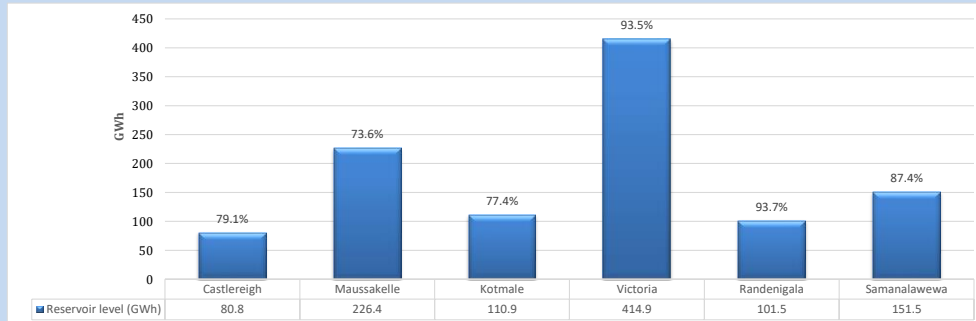
Table 07

Night Peak*	2,117	MW
Day Peak Maximum Demand	1,617	MW
Day Peak Minimum Demand	1,175	MW
Off Peak Minimum Demand	1,282	MW

Above figures are excluding contribution from roof top solar, non telemetered solar and mini hydro plants

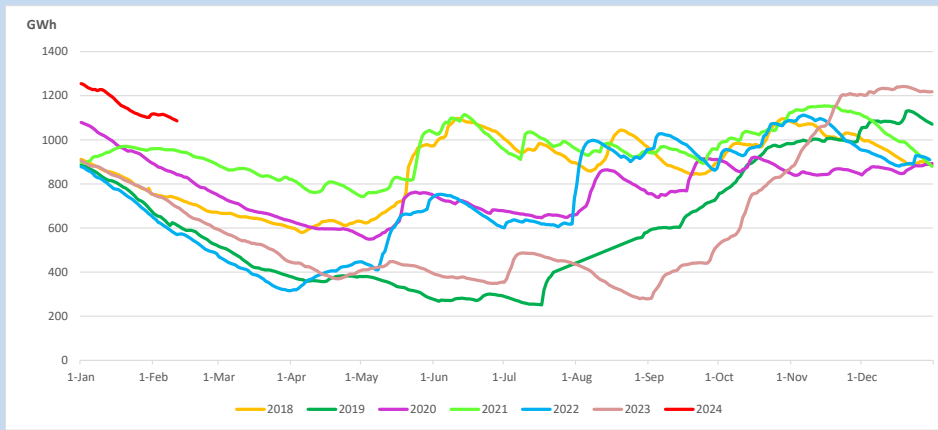
Reservoir Levels -

as at 06.00 Hr on February 12, 2024

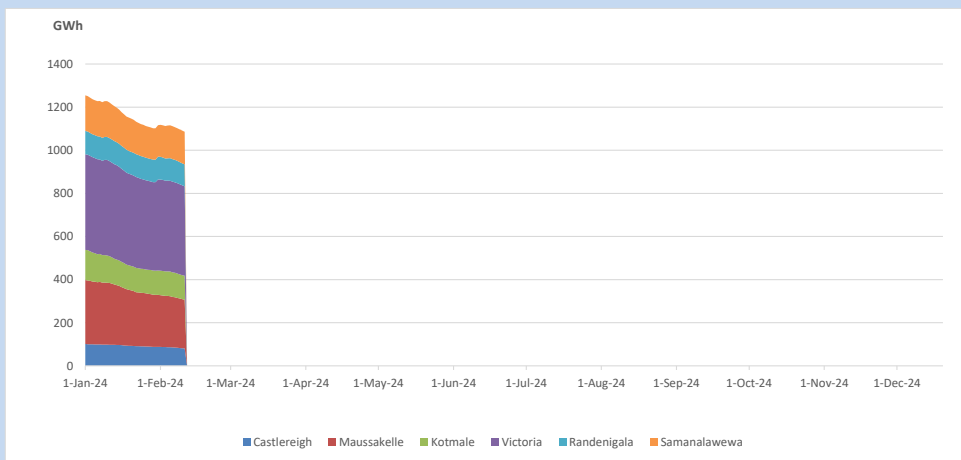


Total Reservoir Level 1086 GWh
 % of Total capacity 84.9%

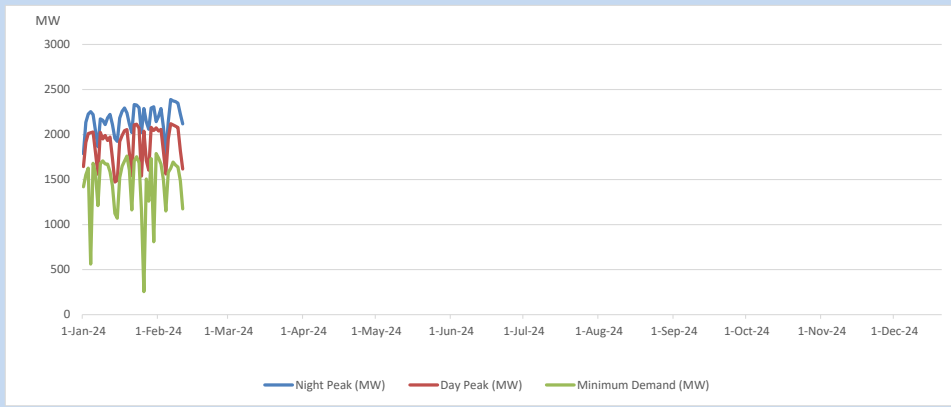
11. Comparison of Total Reservoir Storage Levels with Past Years



12. Variation of Major Hydro Reservoir Levels in the current year (GWh)



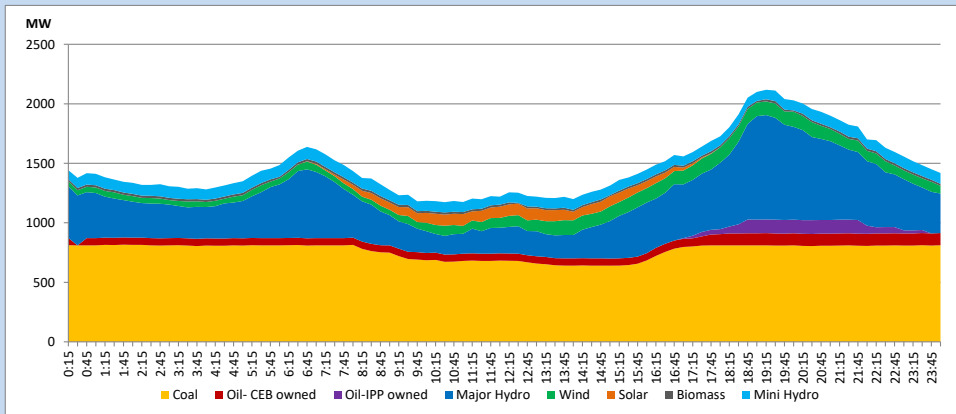
13. Variation of Demand during the current year



The above figures are excluding contribution from roof top solar, non telemetered solar and mini hydro plants

14. Daily Load Curve

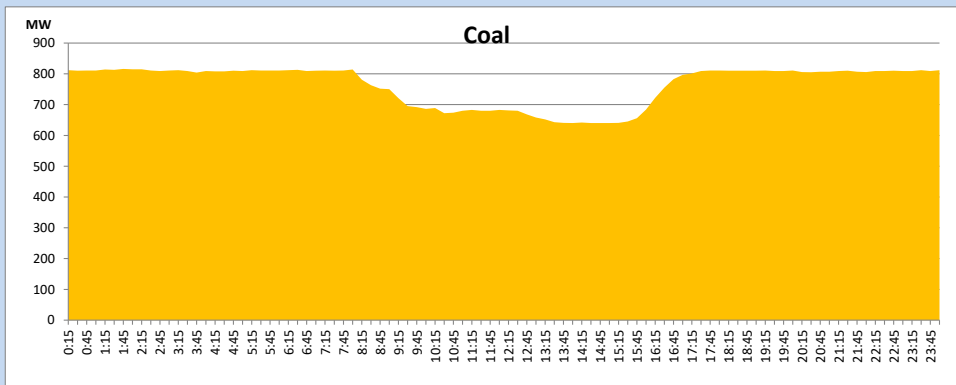
February 11, 2024



Solar and wind data is based on Telemetered Power Stations only

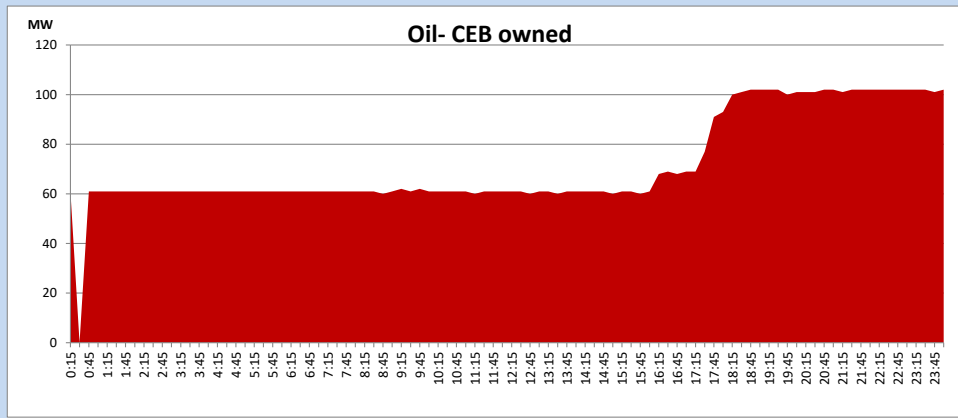
Coal Generation during

February 11, 2024



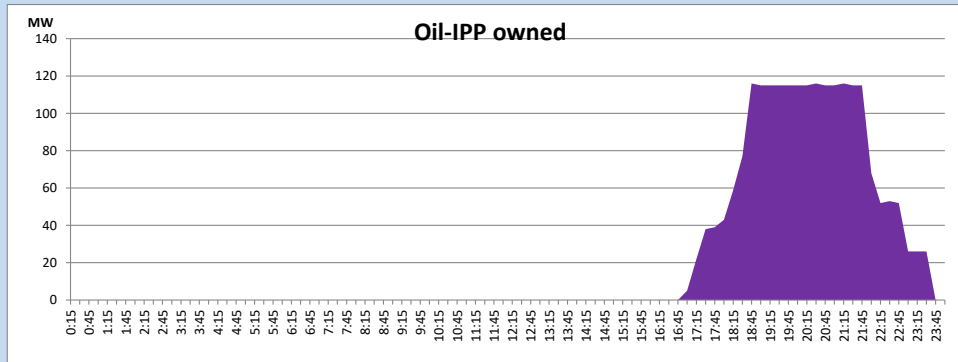
CEB Oil Plant Generation during

February 11, 2024



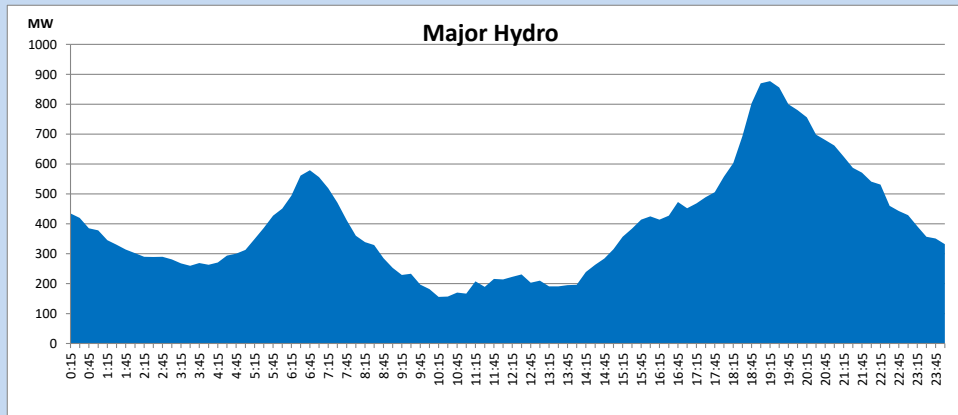
IPP Oil Plant Generation during

February 11, 2024



Major Hydro Generation during

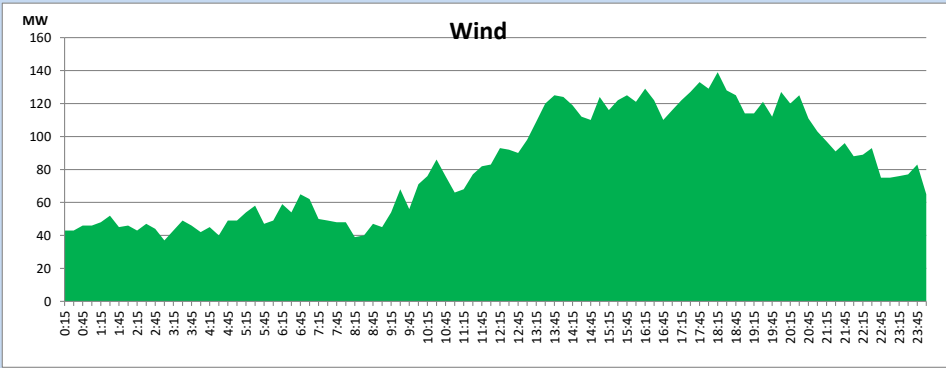
February 11, 2024



Wind Generation during

February 11, 2024

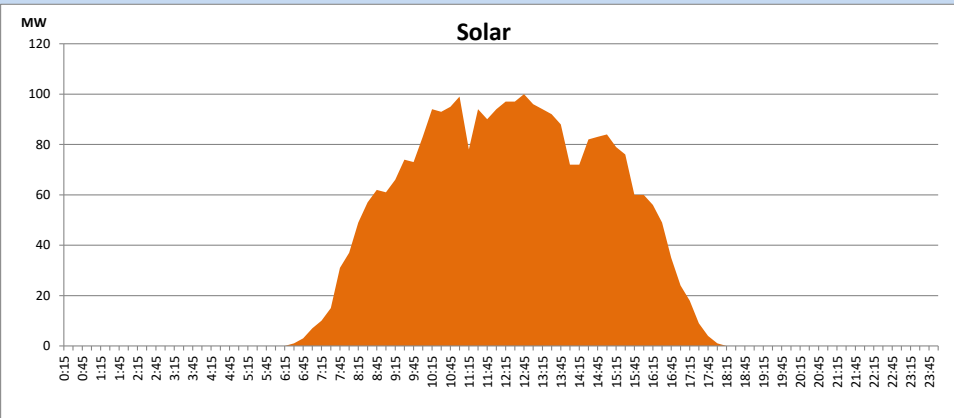
Based on Telemetered Power Stations only



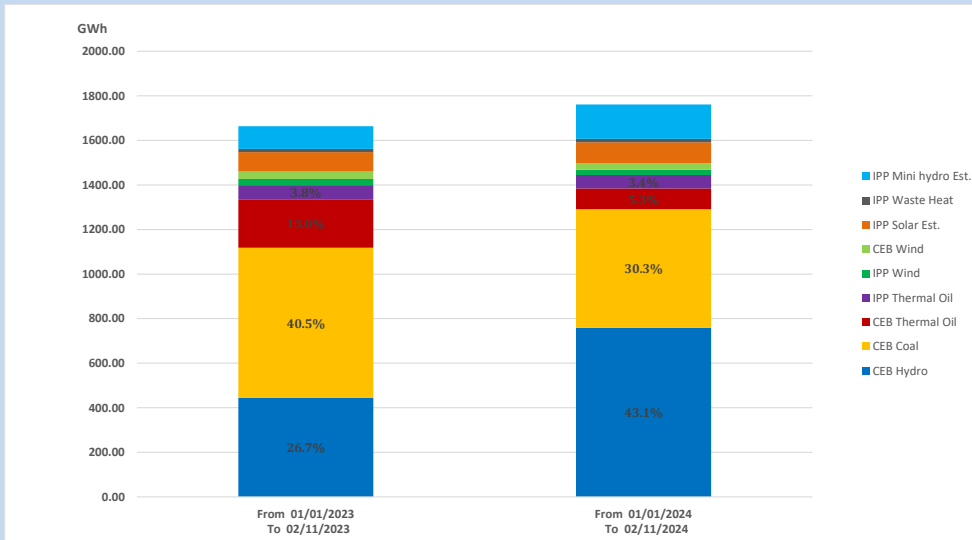
Solar Generation during

February 11, 2024

Based on Telemetered Power Stations only



15. Cumulative Dispatch Comparison with Last Year



Cumulative dispatch
 From 01/01/2023 To 02/11/2023
 From 01/01/2024 To 02/11/2024

1664 GWh
 1761 GWh

The above figures are including contribution from roof top solar, non telemetered solar and mini hydro plants)
 Unserved energy due to power cuts has been excluded in 2023

Thermal Plant Fuel types

Table 08

Power Station	Primary Fuel
CEB Thermal	
Sapugaskanda 1	Heavy Fuel
Sapugaskanda 2	Heavy Fuel
Kelanitissa Small Gas Turbines	Auto Diesel
GT 7 - Kelanitissa	Auto Diesel
Kelanitissa CCY	Naphtha or Diesel
Lakvijaya 1	Coal
Lakvijaya 2	Coal
Lakvijaya 3	Coal
Uthuru Janani	Heavy Fuel
Barge CEB	Heavy Fuel
KCCPS -2	Auto Diesel

Power Station	Primary Fuel
Private Thermal	
West Coast	Auto Diesel / Heavy Fuel
ACE Matara	Heavy Fuel
ACE Embilipitiya	Heavy Fuel

Major Incidents reported during the day

February 11, 2024

Nil.