

# Generation and Reservoirs Statistics

February 9, 2024



PUBLIC UTILITIES COMMISSION OF SRI LANKA

## 1. Daily Generation Mix in MWh

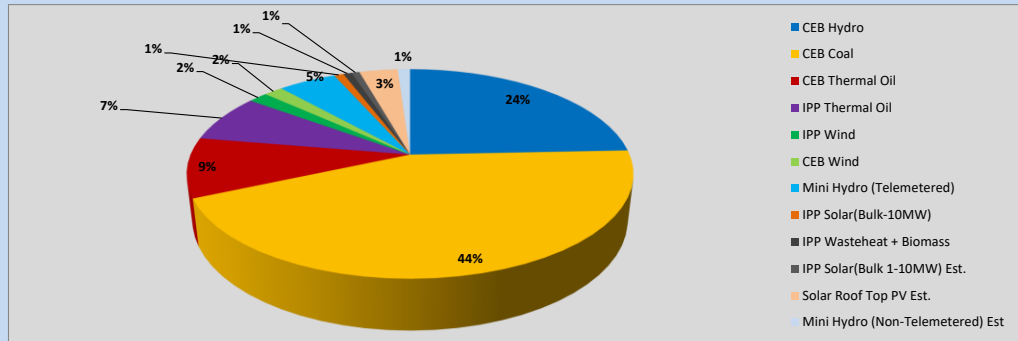


Table 01

	Generation (MWh)
CEB Hydro	10,737
CEB Coal	19,449
CEB Thermal Oil	4,068
IPP Thermal Oil	3,265
IPP Wind	732
CEB Wind	725
Mini Hydro (Telemetered)	2,212
IPP Solar (Bulk)	364
IPP Waste heat + Biomass	319
<b>Total Generation (Excluding estimated figures)</b>	<b>41,871</b>
* Estimated unserved energy	0
* Estimated Mini Hydro (Non telemetered)	471
* Estimated IPP Solar PV (Bulk 1-10MW)	304
* Estimated Solar Roof Top PV	1470
<b>Total Generation (Including estimated figures)</b>	<b>44,116</b>

\* Estimated figures of CEB generation report

Table 02

	Installed Capacity (MW)
CEB Hydro	1409
CEB Coal	810
CEB Thermal Oil	781
IPP Thermal Oil (West Coast, ACE Matara and ACE Embilipitiya)	387
IPP Wind	148
CEB Wind	100
Mini Hydro	422
IPP Waste heat + Biomass	50
IPP Solar	136
Rooftop Solar (Ordinary)	277
Rooftop Solar (LT Bulk)	263
Rooftop Solar (HT Bulk)	70

Data Source - Monthly Review Report [Aug-2023]

## 2. Cumulative Dispatch

Following data excludes the contribution from roof top solar, non telemetered solar and mini hydro plants

Table 03 - Current Month

Category	Dispatch (GWh)	
CEB Hydro	106	27.56%
CEB Coal	171	44.37%
CEB Thermal Oil	31	7.93%
IPP Thermal	13	3.34%
SPP Wind	5	1.31%
CEB Wind	6	1.51%
Mini Hydro *	30	7.86%
IPP Solar *	20	5.09%
IPP Waste heat + BMP	4	1.03%
<b>Total</b>	<b>386</b>	

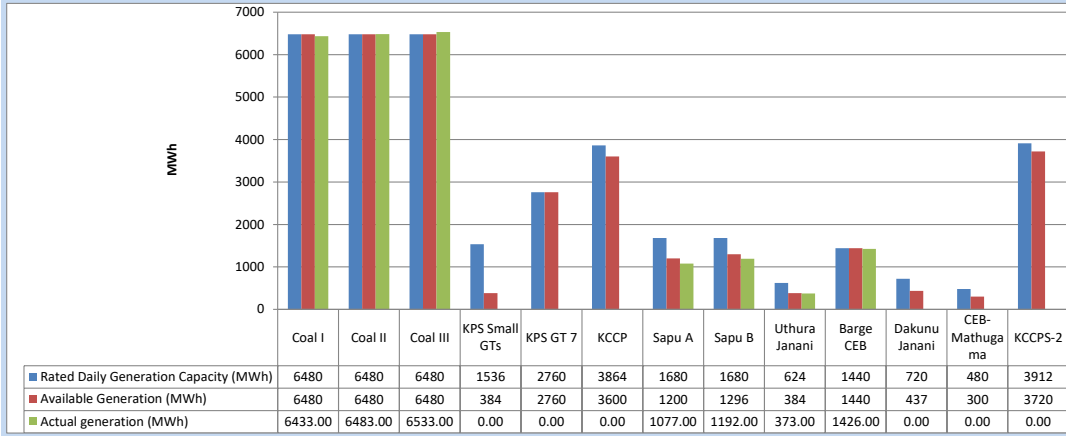
Table 04 - Current Year

Category	Dispatch (GWh)	
CEB Hydro	738	43.85%
CEB Coal	495	29.43%
CEB Thermal Oil	88	5.24%
IPP Thermal	59	3.48%
SPP Wind	22	1.28%
CEB Wind	28	1.65%
Mini Hydro *	149	8.88%
IPP Solar *	89	5.30%
IPP Waste heat	15	0.89%
<b>Total</b>	<b>1,682</b>	

\*Including estimated contribution from non telemetered plants

### 3. CEB owned Thermal Plant Dispatch

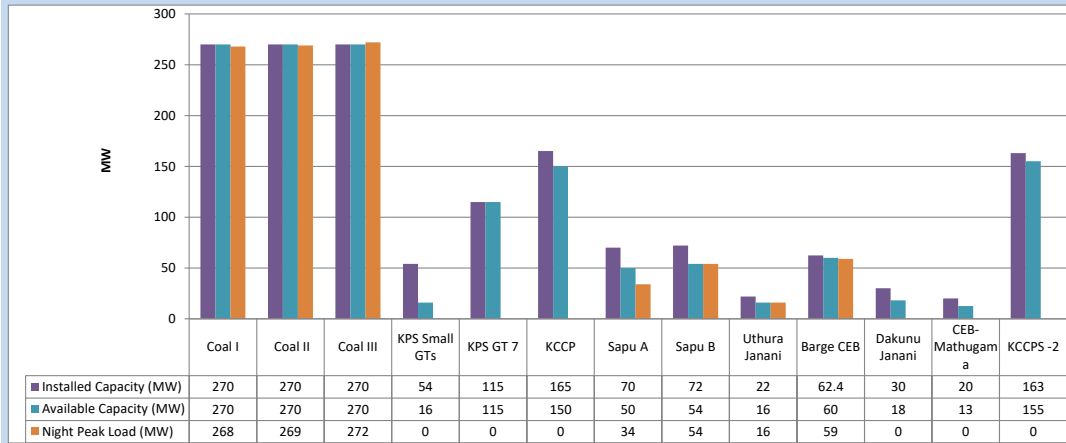
February 9, 2024



Available Generation is estimated based on plant availability at 6.00am on

February 10, 2024

### 4. CEB owned Thermal Plant Loading at the Night Peak

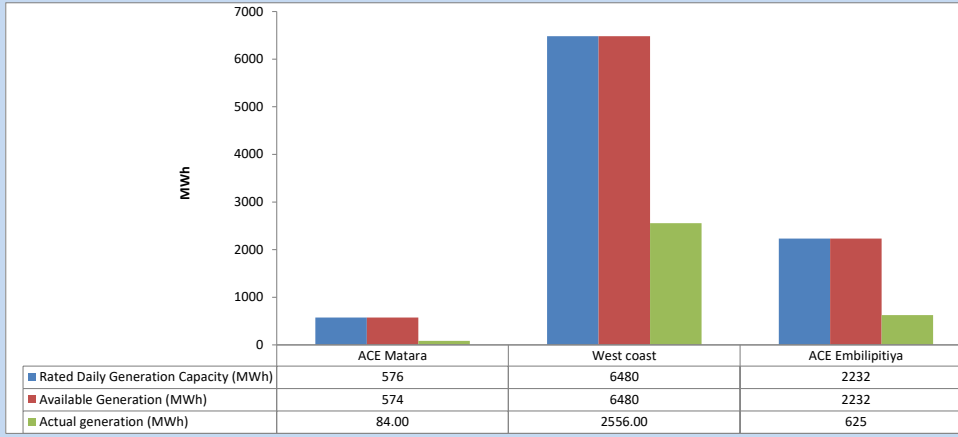


Plant availability is recorded at 6.00 am on

February 10, 2024

### 5. IPP owned Thermal Plant Dispatch

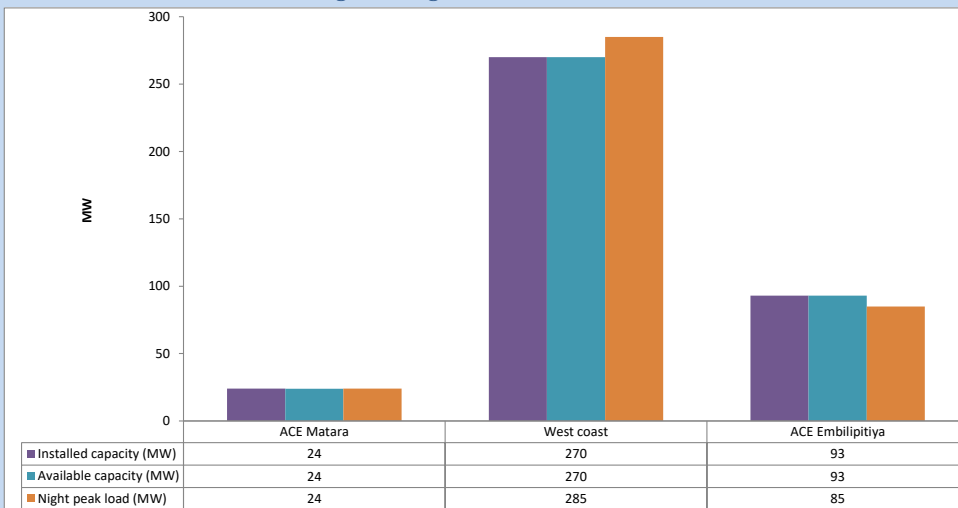
February 9, 2024



Available Generation is estimated based on plant availability at 6.00am on

February 10, 2024

### 6. IPP owned Thermal Plant Loading at the Night Peak

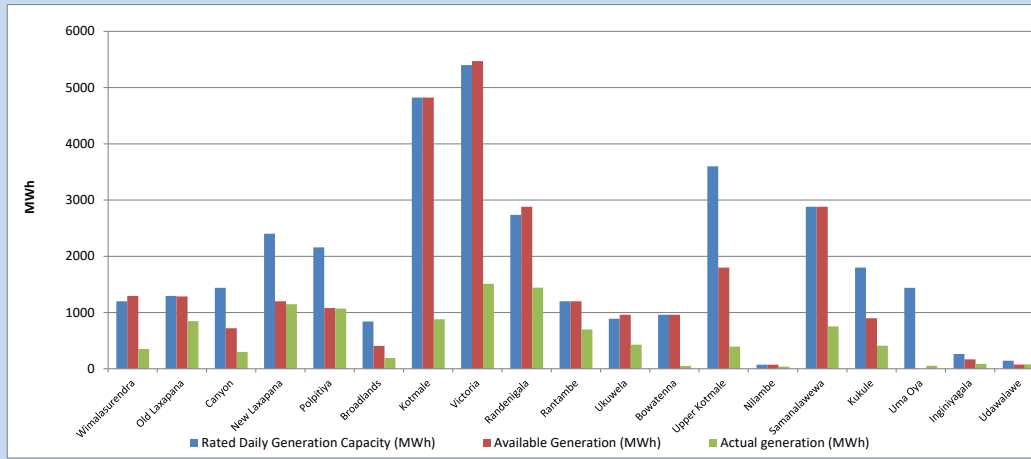


Plant availability is recorded at 6.00 am on

February 10, 2024

### 7. Major Hydro Plant Dispatch

February 9, 2024

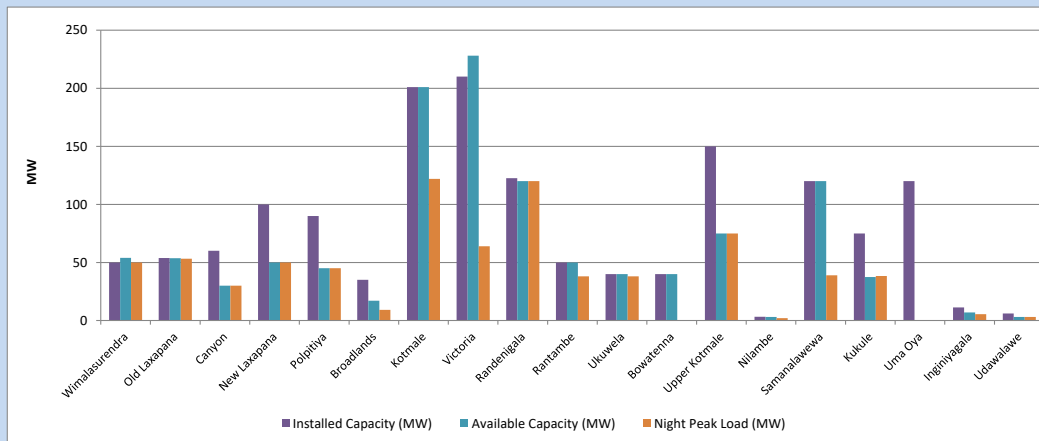


Available Generation is estimated based on plant availability at 6.00am on  
Broadlands power plant is operating in the Commissioning Stage

February 10, 2024

### 8. Major Hydro Plant Loading at Night Peak

February 9, 2024



Plant availability is recorded at 6.00 am on  
Broadlands power plant is operating in the Commissioning Stage

February 10, 2024

## 9. Summary of Major Plant performance

**Table 05**

Plant	Maximum Available Total Capacity	Plant Availability	Night peak Load	Plant Dispatch
	(MW)	(MW)	(MW)	(MWh)
Wimalasurendra	50	54	50	351
Old Laxapana	54	54	53	846
Canyon	60	30	30	299
New Laxapana	100	50	50	1,149
Polpitiya	90	45	45	1,070
Broadlands	35	17	9	192
Kotmale	201	201	122	880
Victoria	210	228	64	1,511
Randenigala	123	120	120	1,442
Rantambe	50	50	38	700
Ukuwela	40	40	38	429
Bowatenna	40	40	0	51
Upper Kotmale	150	75	75	396
Nilambe	3	3	2	37
Samanalawewa	120	120	39	754
Kukule	75	38	38	409
Uma Oya (Testing )	120	0	0	55
Inginiyagala	11	7	5	88
Udawalawe	6	3	3	78
Puttalam Coal I	270	270	268	6,433
Puttalam Coal II	270	270	269	6,483
Puttalam Coal III	270	270	272	6,533
KPS Small GTs	54	16	0	0
KPS GT 7	115	115	0	0
KCCP	165	150	0	0
Sapugaskanda A	70	50	34	1,077
Sapugaskanda B	72	54	54	1,192
Uthura Janani	22	16	16	373
Barge CEB	62	60	59	1,426
CEB-Hambantota	30	18	0	0
CEB-Mathugama	20	13	0	0
ACE Matara	24	24	24	84
Asia Power	50	0	0	0
KCCPS -2	163	155	0	0
West Coast	270	270	285	2,556
Nothern Power	36	0	0	0
ACE Embilipitiya	93	93	85	625
<b>Total</b>	<b>3,594</b>	<b>3,018</b>	<b>2,335</b>	<b>41,871</b>

Note-

Plant availability is the availability recorded at 6 am on

February 10, 2024

Installed Capacity is sourced from CEB Annual Report- 2022

10. Contribution to the Night Peak in MW

February 9, 2024

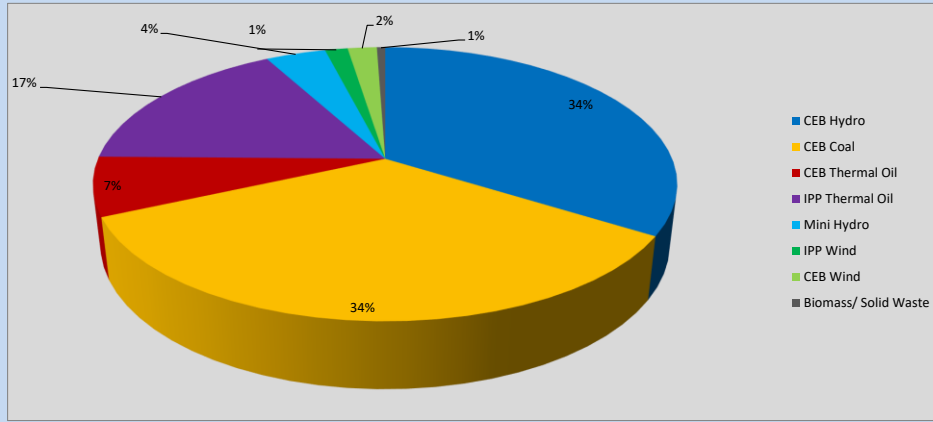


Table 06

CEB Hydro	795	MW
CEB Coal	809	MW
CEB Thermal Oil	163	MW
IPP Thermal Oil	394	MW
Mini Hydro (Telemetered)	93	MW
IPP Wind	35.3	MW
CEB Wind	45.3	MW
Biomass/ Solid Waste	13	MW

Recorded Peak Demand Data

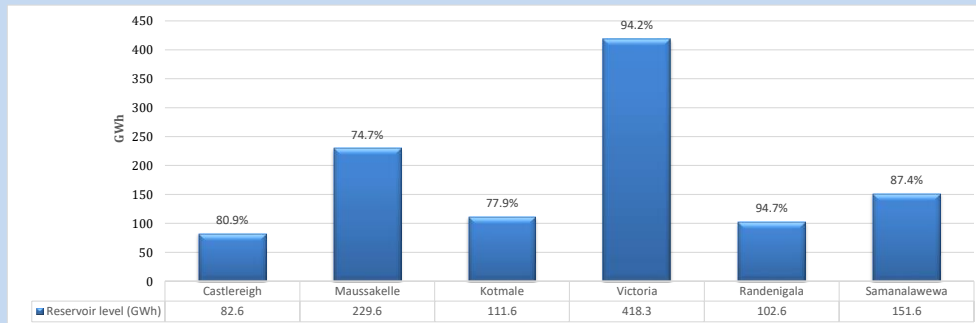
Table 07

Night Peak*	2,348	MW
Day Peak Maximum Demand	2,078	MW
Day Peak Minimum Demand	1,639	MW
Off Peak Minimum Demand	1,336	MW

Above figures are excluding contribution from roof top solar, non telemetered solar and mini hydro plants

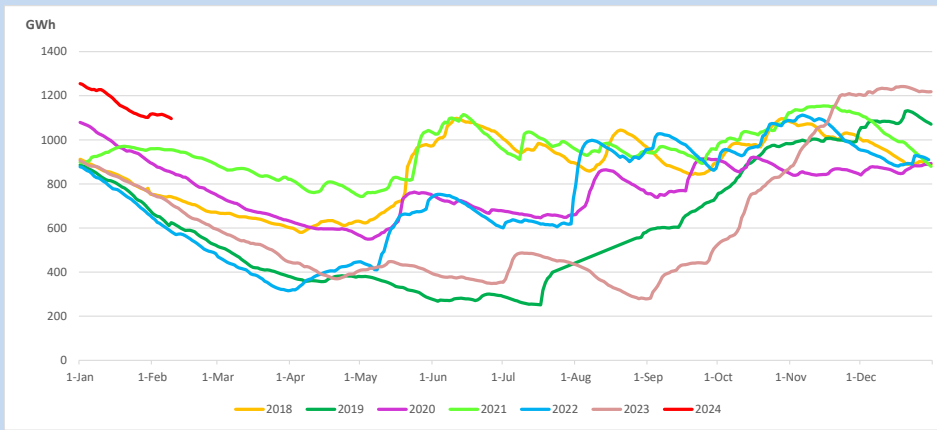
Reservoir Levels -

as at 06.00 Hr on February 10, 2024

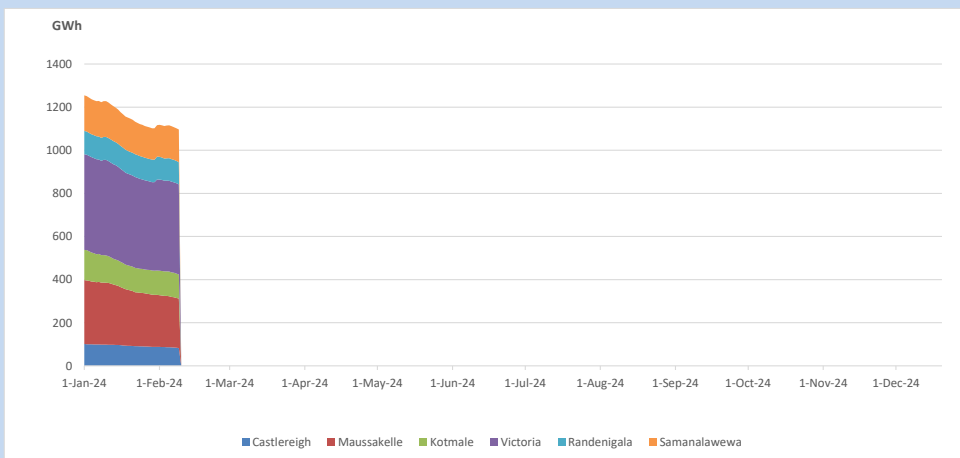


Total Reservoir Level 1096.3 GWh  
 % of Total capacity 85.7%

### 11. Comparison of Total Reservoir Storage Levels with Past Years

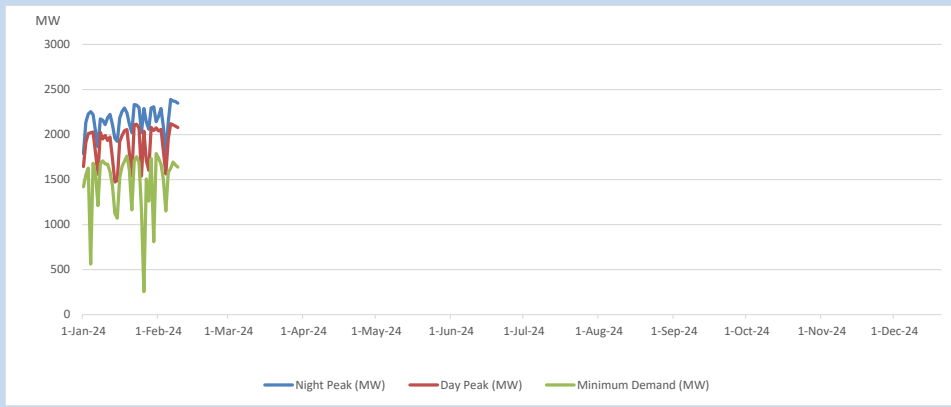


### 12. Variation of Major Hydro Reservoir Levels in the current year (GWh)





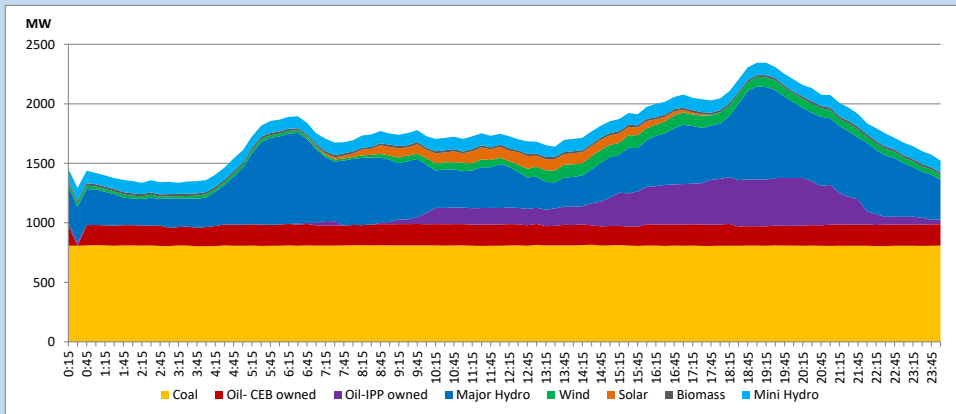
### 13. Variation of Demand during the current year



The above figures are excluding contribution from roof top solar, non telemetered solar and mini hydro plants

### 14. Daily Load Curve

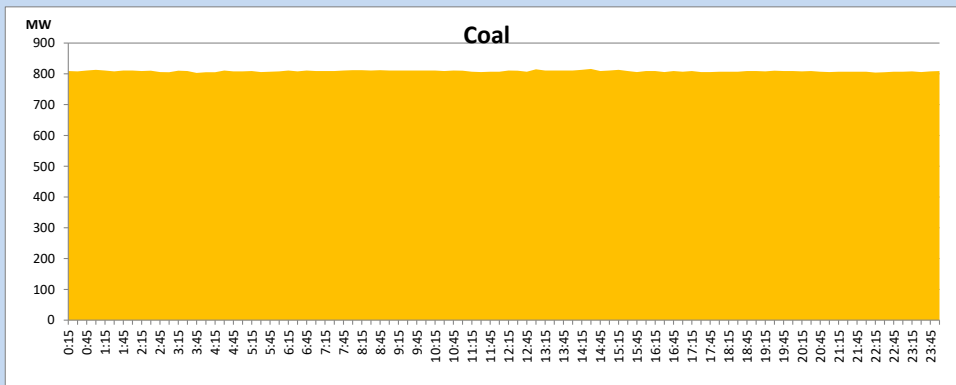
February 9, 2024



Solar and wind data is based on Telemetered Power Stations only

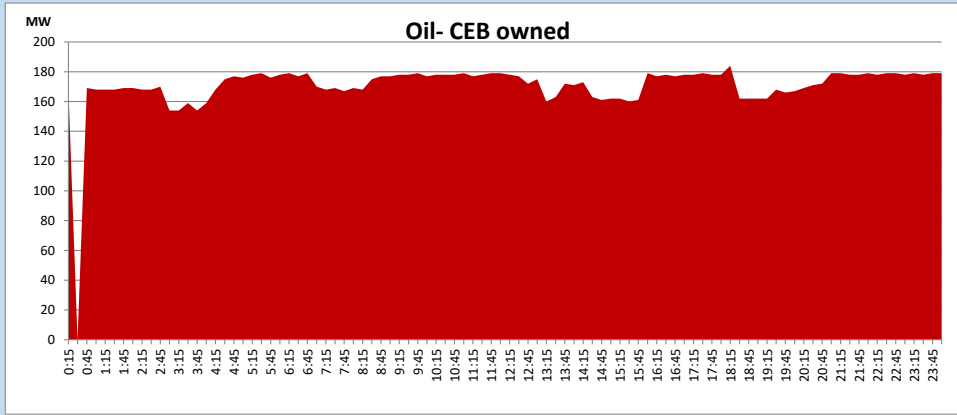
### Coal Generation during

February 9, 2024



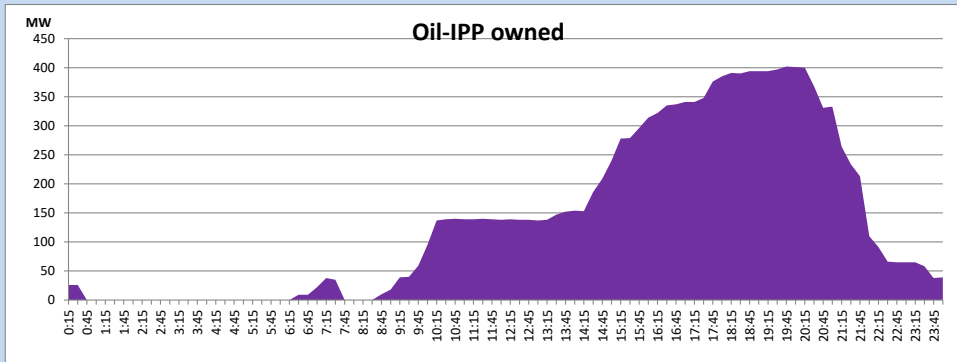
CEB Oil Plant Generation during

February 9, 2024



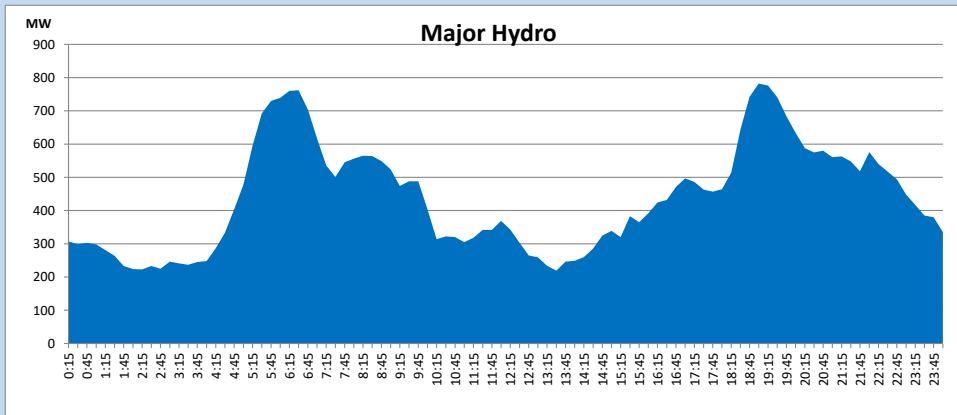
IPP Oil Plant Generation during

February 9, 2024



Major Hydro Generation during

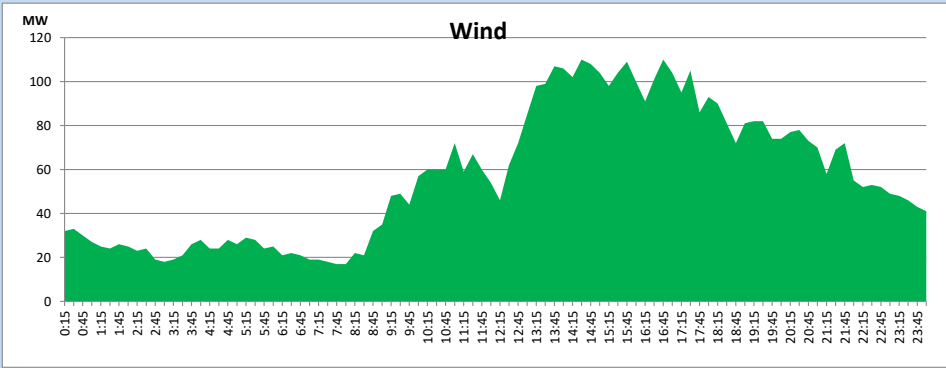
February 9, 2024



### Wind Generation during

February 9, 2024

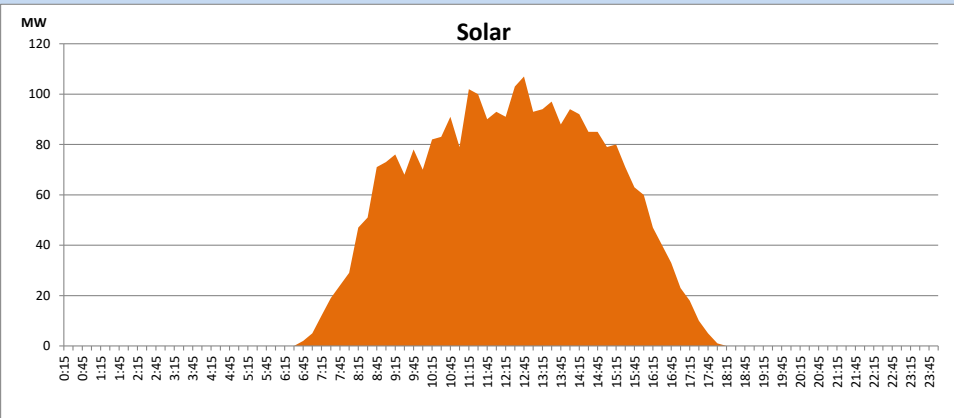
Based on Telemetered Power Stations only



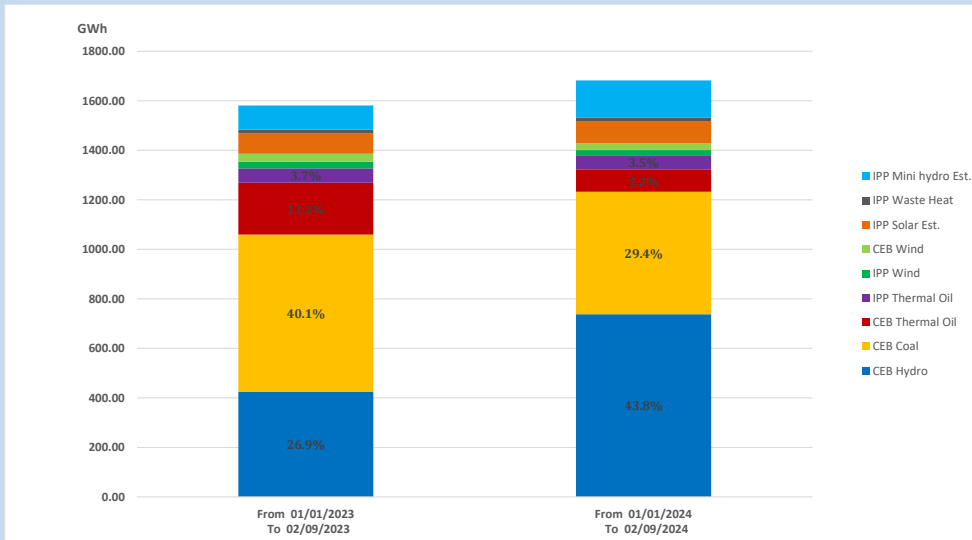
### Solar Generation during

February 9, 2024

Based on Telemetered Power Stations only



### 15. Cumulative Dispatch Comparison with Last Year



Cumulative dispatch  
 From 01/01/2023 To 02/09/2023  
 From 01/01/2024 To 02/09/2024

1581 GWh  
 1682 GWh

The above figures are including contribution from roof top solar, non telemetered solar and mini hydro plants)  
 Unserved energy due to power cuts has been excluded in 2023

Thermal Plant Fuel types

Table 08

Power Station	Primary Fuel
CEB Thermal	
Sapugaskanda 1	Heavy Fuel
Sapugaskanda 2	Heavy Fuel
Kelanitissa Small Gas Turbines	Auto Diesel
GT 7 - Kelanitissa	Auto Diesel
Kelanitissa CCY	Naphtha or Diesel
Lakvijaya 1	Coal
Lakvijaya 2	Coal
Lakvijaya 3	Coal
Uthuru Janani	Heavy Fuel
Barge CEB	Heavy Fuel
KCCPS -2	Auto Diesel

Power Station	Primary Fuel
Private Thermal	
West Coast	Auto Diesel / Heavy Fuel
ACE Matara	Heavy Fuel
ACE Embilipitiya	Heavy Fuel

Major Incidents reported during the day

February 9, 2024

- 1) KCCP-PS 02 made available from 18:23hrs after completing the cooling tower repairing work which had been carried out from 25.01.2024.