

# Generation and Reservoirs Statistics

February 7, 2024



PUBLIC UTILITIES COMMISSION OF SRI LANKA

## 1. Daily Generation Mix in MWh

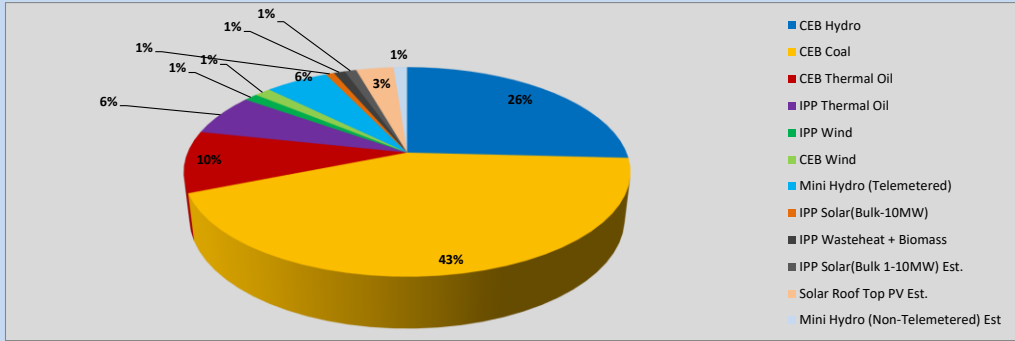


Table 01

	Generation (MWh)
CEB Hydro	11,660
CEB Coal	19,460
CEB Thermal Oil	4,279
IPP Thermal Oil	2,914
IPP Wind	524
CEB Wind	638
Mini Hydro (Telemetered)	2,469
IPP Solar (Bulk)	333
IPP Waste heat + Biomass	437
<b>Total Generation (Excluding estimated figures)</b>	<b>42,714</b>
* Estimated unserved energy	0
* Estimated Mini Hydro (Non telemetered)	526
* Estimated IPP Solar PV (Bulk 1-10MW)	454
* Estimated Solar Roof Top PV	1470
<b>Total Generation (Including estimated figures)</b>	<b>45,164</b>

\* Estimated figures of CEB generation report

Table 02

	Installed Capacity (MW)
CEB Hydro	1409
CEB Coal	810
CEB Thermal Oil	781
IPP Thermal Oil (West Coast, ACE Matara and ACE Embilipitiya)	387
IPP Wind	148
CEB Wind	100
Mini Hydro	422
IPP Waste heat + Biomass	50
IPP Solar	136
Rooftop Solar (Ordinary)	277
Rooftop Solar (LT Bulk)	263
Rooftop Solar (HT Bulk)	70

Data Source - Monthly Review Report [Aug-2023]

## 2. Cumulative Dispatch

Following data excludes the contribution from roof top solar, non telemetered solar and mini hydro plants

Table 03 - Current Month

Category	Dispatch (GWh)	
CEB Hydro	85	28.42%
CEB Coal	132	44.53%
CEB Thermal Oil	22	7.55%
IPP Thermal	6	2.06%
SPP Wind	4	1.29%
CEB Wind	5	1.53%
Mini Hydro *	25	8.40%
IPP Solar *	15	5.14%
IPP Waste heat + BMP	3	1.07%
<b>Total</b>	<b>297</b>	

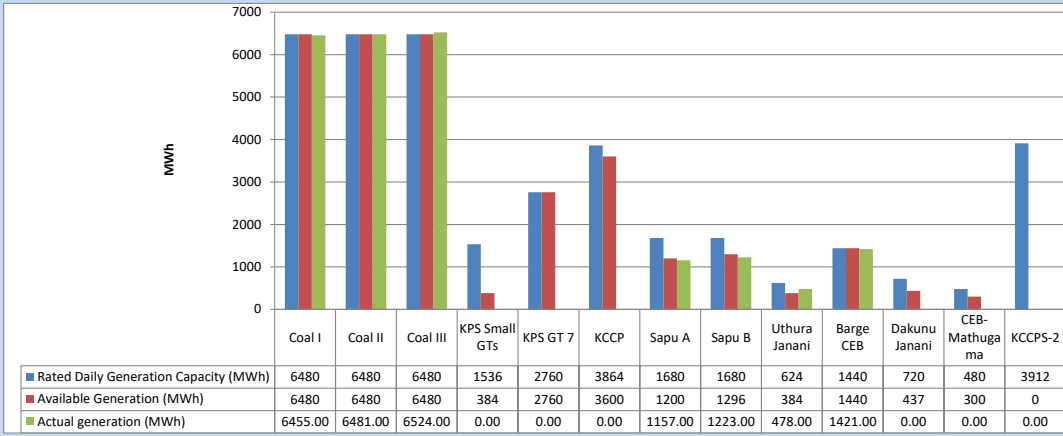
Table 04 - Current Year

Category	Dispatch (GWh)	
CEB Hydro	716	44.92%
CEB Coal	456	28.63%
CEB Thermal Oil	80	5.02%
IPP Thermal	52	3.25%
SPP Wind	20	1.28%
CEB Wind	26	1.66%
Mini Hydro *	144	9.04%
IPP Solar *	85	5.32%
IPP Waste heat	14	0.89%
<b>Total</b>	<b>1,594</b>	

\*Including estimated contribution from non telemetered plants

### 3. CEB owned Thermal Plant Dispatch

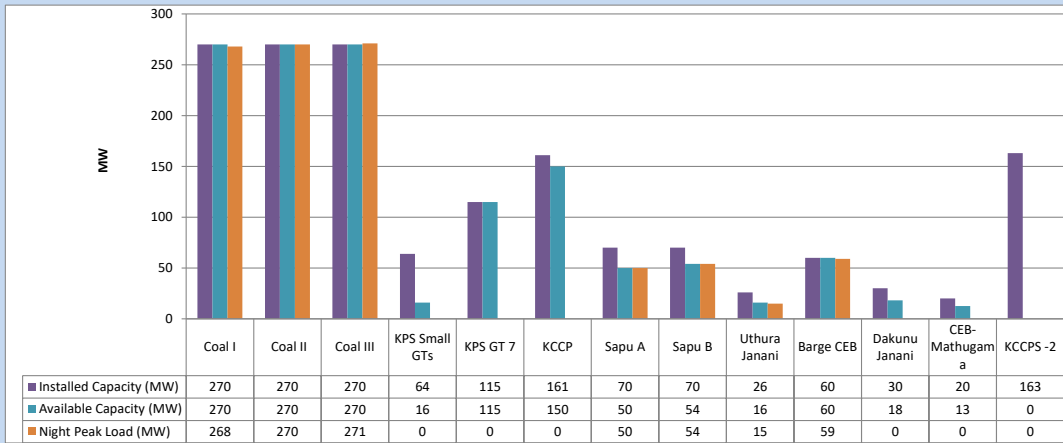
February 7, 2024



Available Generation is estimated based on plant availability at 6.00am on

February 8, 2024

### 4. CEB owned Thermal Plant Loading at the Night Peak

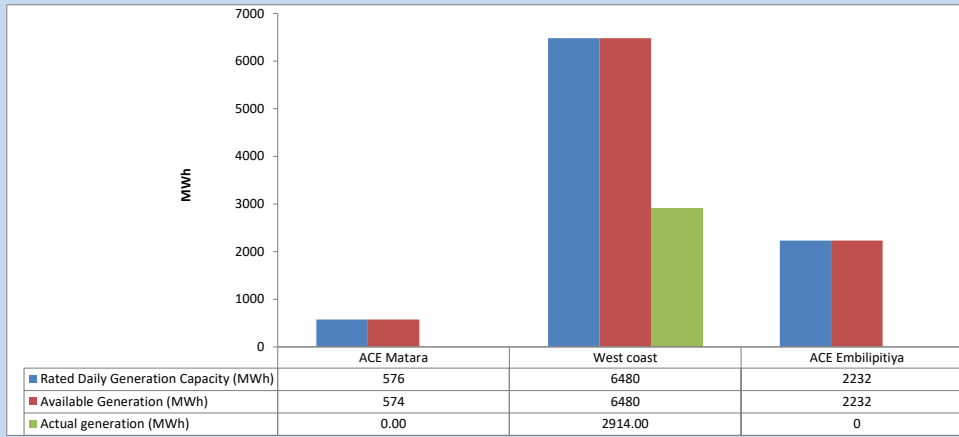


Plant availability is recorded at 6.00 am on

February 8, 2024

### 5. IPP owned Thermal Plant Dispatch

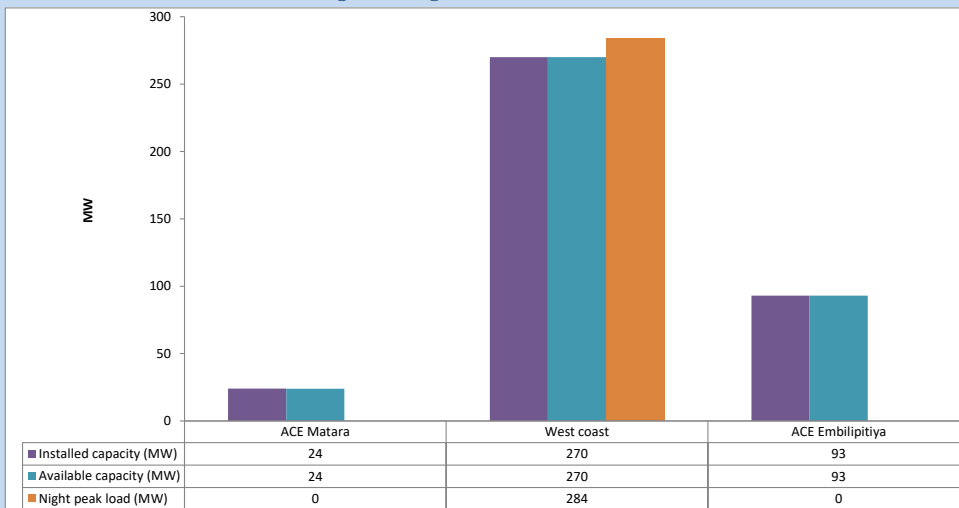
February 7, 2024



Available Generation is estimated based on plant availability at 6.00am on

February 8, 2024

### 6. IPP owned Thermal Plant Loading at the Night Peak

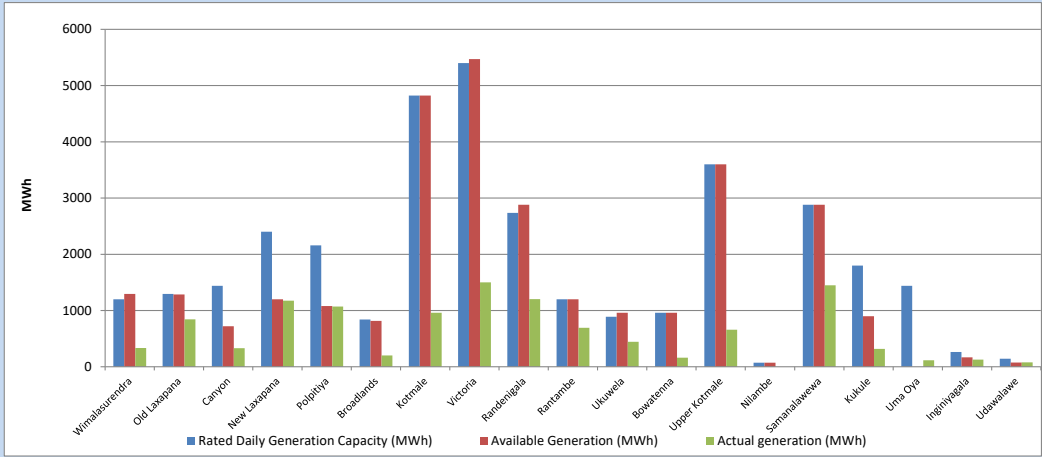


Plant availability is recorded at 6.00 am on

February 8, 2024

### 7. Major Hydro Plant Dispatch

February 7, 2024

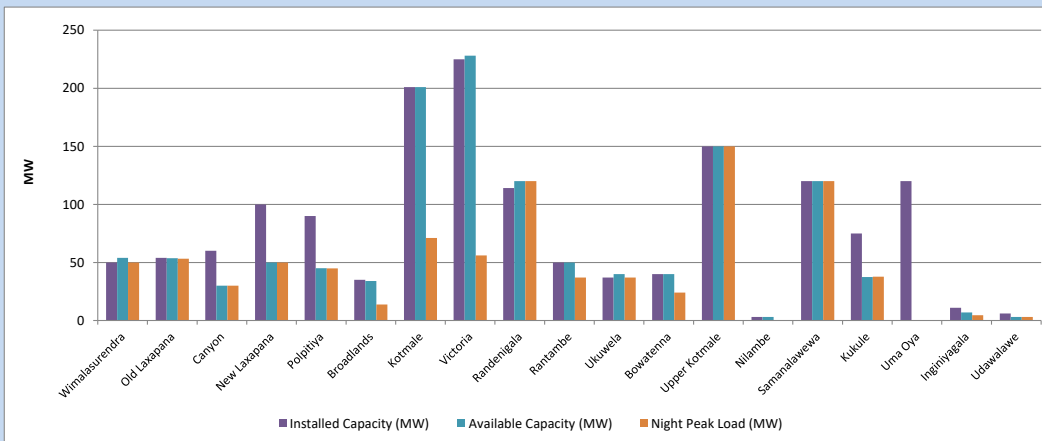


Available Generation is estimated based on plant availability at 6.00am on  
Broadlands power plant is operating in the Commissioning Stage

February 8, 2024

### 8. Major Hydro Plant Loading at Night Peak

February 7, 2024



Plant availability is recorded at 6.00 am on  
Broadlands power plant is operating in the Commissioning Stage

February 8, 2024

## 9. Summary of Major Plant performance

**Table 05**

Plant	Installed Capacity	Plant Availability	Night peak Load	Plant Dispatch
	(MW)	(MW)	(MW)	(MWh)
Wimalasurendra	50	54	50	333
Old Laxapana	54	54	53	842
Canyon	60	30	30	330
New Laxapana	100	50	50	1,176
Polpitiya	90	45	45	1,070
Broadlands	35	34	14	200
Kotmale	201	201	71	960
Victoria	225	228	56	1,500
Randerigala	114	120	120	1,204
Rantambe	50	50	37	693
Ukuwela	37	40	37	444
Bowatenna	40	40	24	162
Upper Kotmale	150	150	150	659
Nilambe	3	3	0	0
Samanalawewa	120	120	120	1,449
Kukule	75	38	38	318
Uma Oya (Testing )	120	0	0	116
Inginiyagala	11	7	5	128
Udawalawe	6	3	3	77
Puttalam Coal I	270	270	268	6,455
Puttalam Coal II	270	270	270	6,481
Puttalam Coal III	270	270	271	6,524
KPS Small GTs	64	16	0	0
KPS GT 7	115	115	0	0
KCCP	161	150	0	0
Sapugaskanda A	70	50	50	1,157
Sapugaskanda B	70	54	54	1,223
Uthura Janani	26	16	15	478
Barge CEB	60	60	59	1,421
CEB-Hambantota	30	18	0	0
CEB-Mathugama	20	13	0	0
ACE Matara	24	24	0	0
Asia Power	50	0	0	0
KCCPS -2	163	0	0	0
West Coast	270	270	284	2,914
Nothern Power	36	0	0	0
ACE Embilipitiya	93	93	0	0
<b>Total</b>	<b>3,603</b>	<b>2,955</b>	<b>2,360</b>	<b>42,715</b>

Plant availability is the availability recorded at 6 am on

February 8, 2024

### 10. Contribution to the Night Peak in MW

February 7, 2024

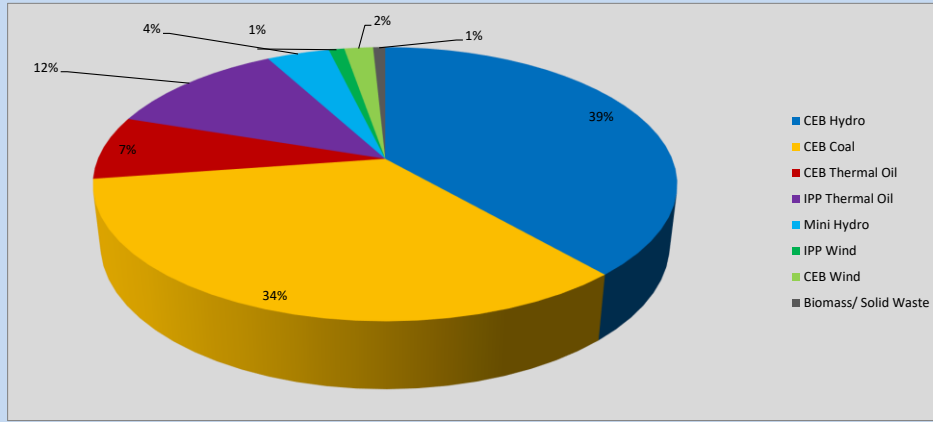


Table 06

CEB Hydro	915	MW
CEB Coal	809	MW
CEB Thermal Oil	178	MW
IPP Thermal Oil	284	MW
Mini Hydro (Telemetered)	98	MW
IPP Wind	24.5	MW
CEB Wind	45.2	MW
Biomass/ Solid Waste	19	MW

### Recorded Peak Demand Data

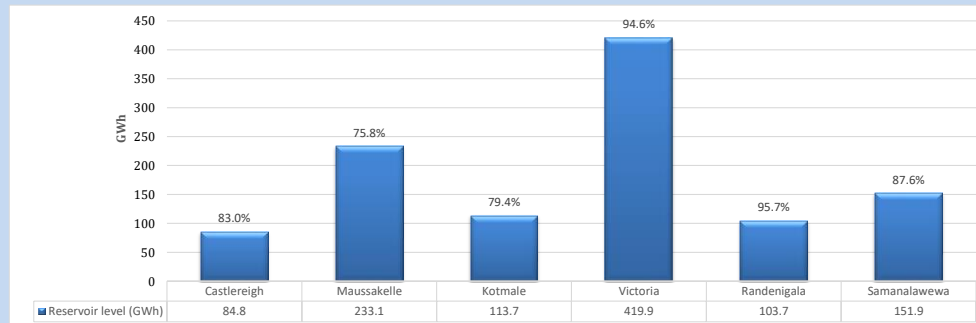
Table 07

Night Peak*	2,373	MW
Day Peak Maximum Demand	2,106	MW
Day Peak Minimum Demand	1,695	MW
Off Peak Minimum Demand	1,332	MW

Above figures are excluding contribution from roof top solar, non telemetered solar and mini hydro plants

### Reservoir Levels -

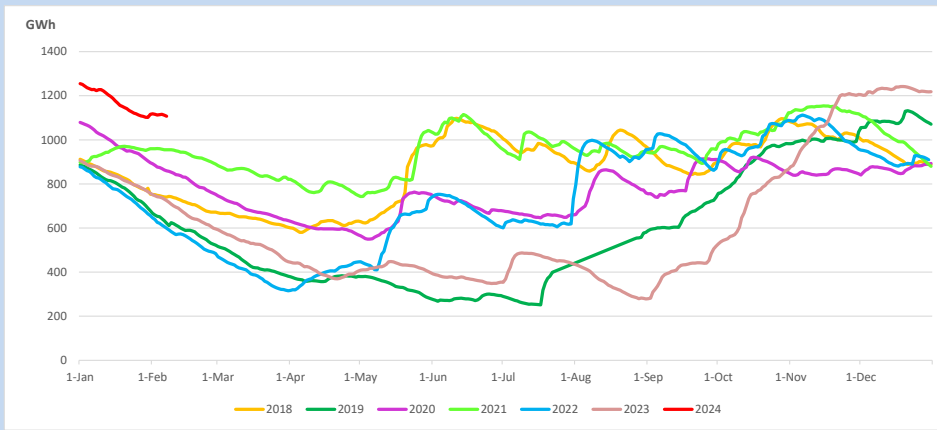
as at 06.00 Hr on February 8, 2024



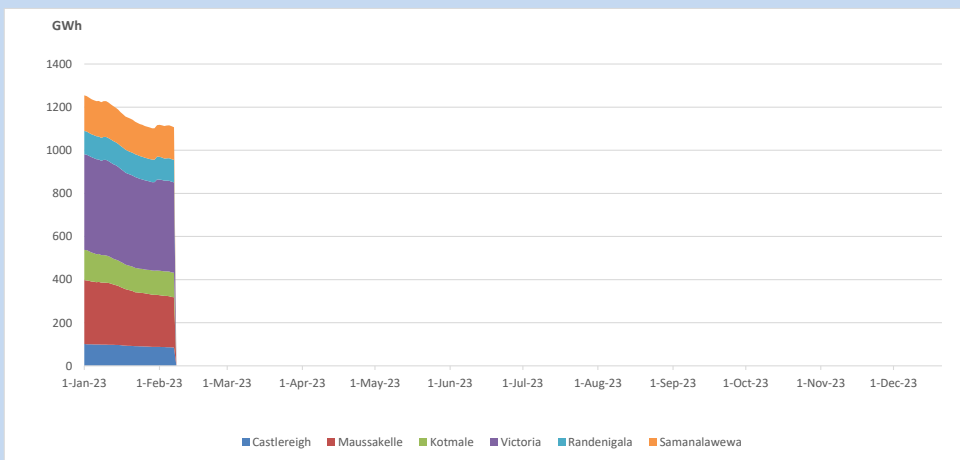
Total Reservoir Level  
% of Total capacity

1107.1 GWh  
86.6%

### 11. Comparison of Total Reservoir Storage Levels with Past Years

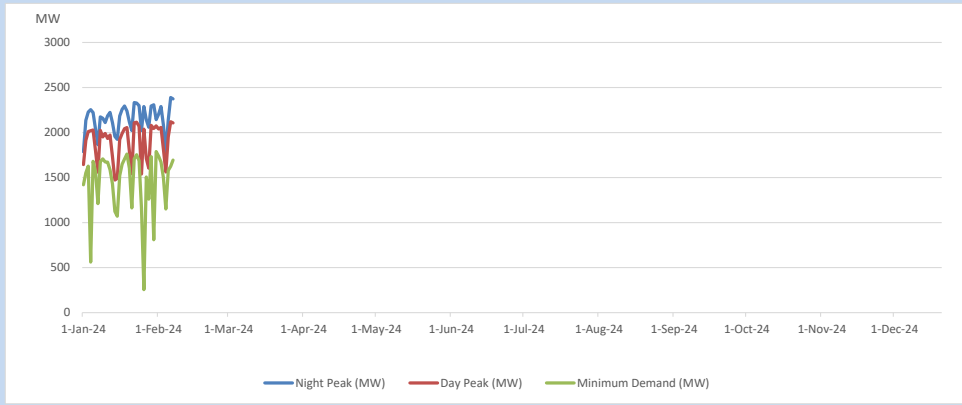


### 12. Variation of Major Hydro Reservoir Levels in the current year (GWh)





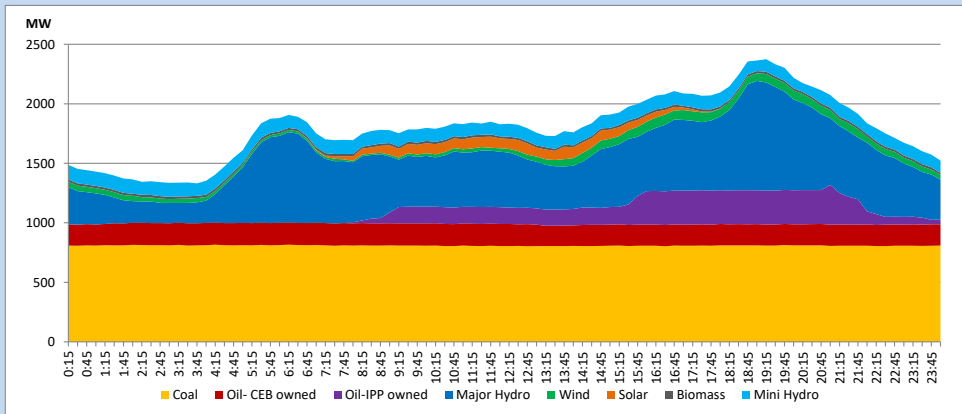
### 13. Variation of Demand during the current year



The above figures are excluding contribution from roof top solar, non telemetered solar and mini hydro plants

### 14. Daily Load Curve

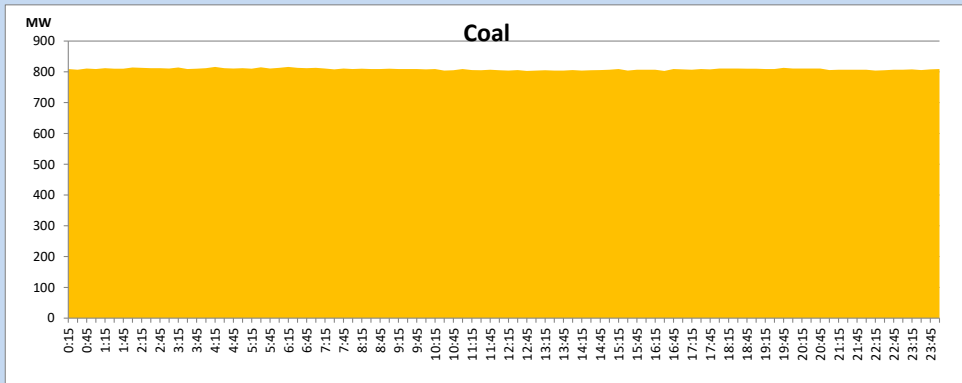
February 7, 2024



Solar and wind data is based on Telemetered Power Stations only

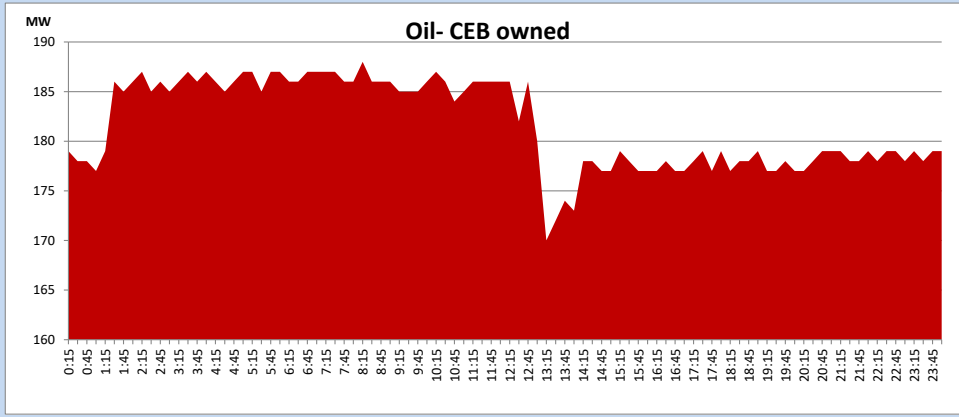
### Coal Generation during

February 7, 2024



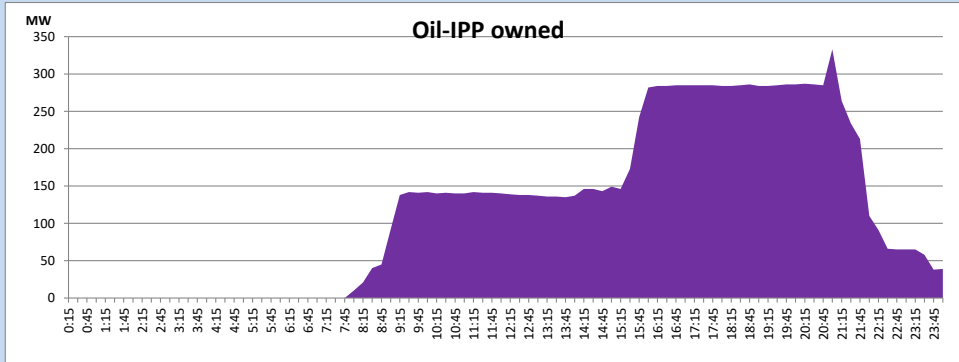
CEB Oil Plant Generation during

February 7, 2024



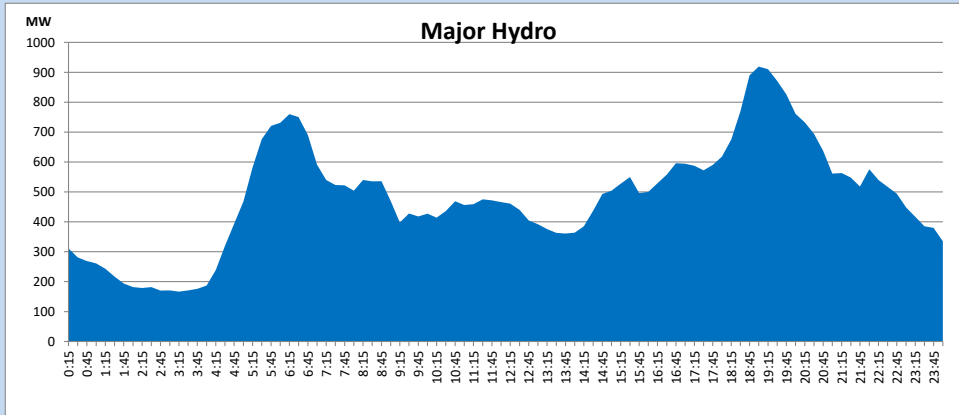
IPP Oil Plant Generation during

February 7, 2024



Major Hydro Generation during

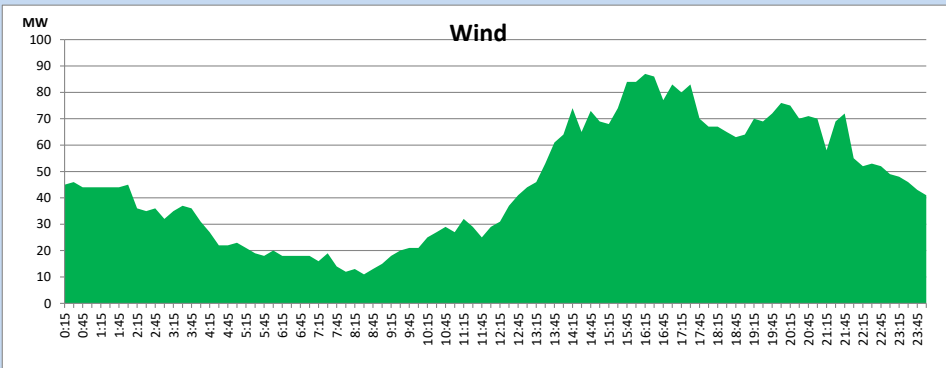
February 7, 2024



## Wind Generation during

February 7, 2024

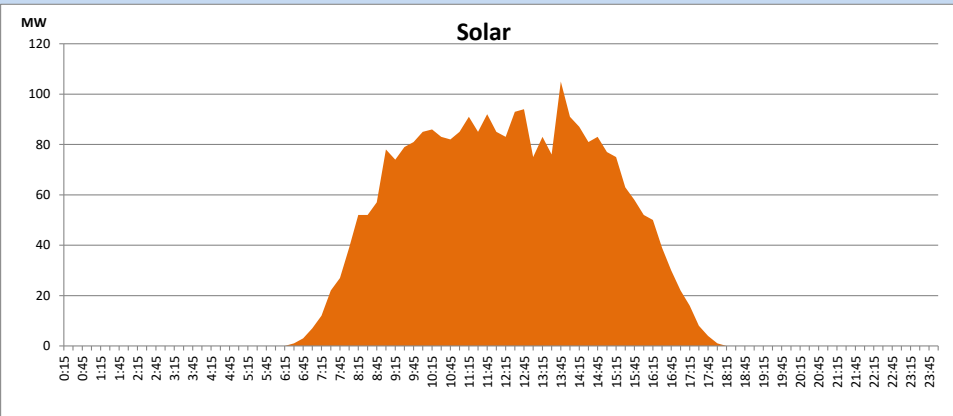
Based on Telemetered Power Stations only



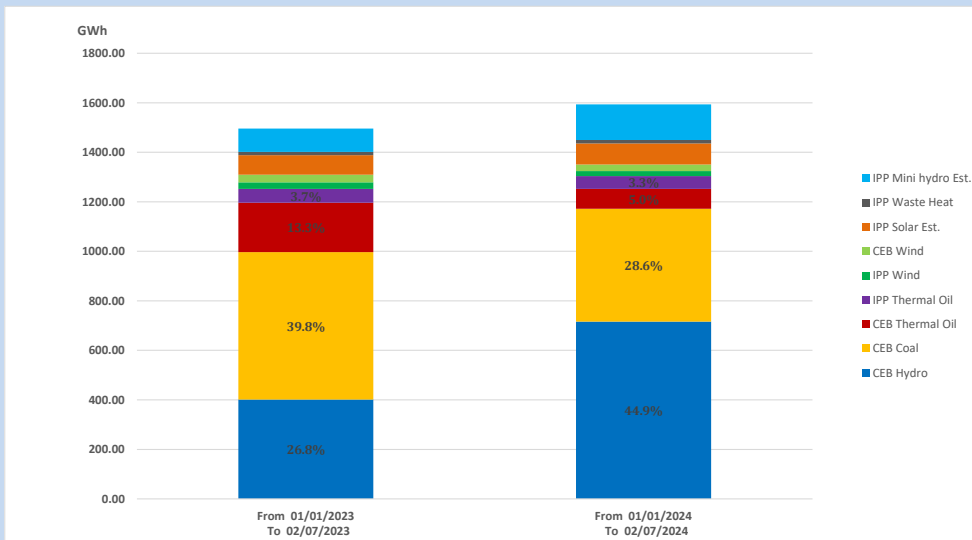
## Solar Generation during

February 7, 2024

Based on Telemetered Power Stations only



## 15. Cumulative Dispatch Comparison with Last Year



### Cumulative dispatch

From 01/01/2023 To 02/07/2023

1496 GWh

From 01/01/2024 To 02/07/2024

1594 GWh

The above figures are including contribution from roof top solar, non telemetered solar and mini hydro plants)

Unserviced energy in 2023 has been excluded

Thermal Plant Fuel types

Table 08

Power Station	Primary Fuel
CEB Thermal	
Sapugaskanda 1	Heavy Fuel
Sapugaskanda 2	Heavy Fuel
Kelanitissa Small Gas Turbines	Auto Diesel
GT 7 - Kelanitissa	Auto Diesel
Kelanitissa CCY	Naphtha or Diesel
Lakvijaya 1	Coal
Lakvijaya 2	Coal
Lakvijaya 3	Coal
Uthuru Janani	Heavy Fuel
Barge CEB	Heavy Fuel
KCCPS -2	Auto Diesel

Power Station	Primary Fuel
Private Thermal	
West Coast	Auto Diesel / Heavy Fuel
ACE Matara	Heavy Fuel
ACE Embilipitiya	Heavy Fuel

Major Incidents reported during the day

February 7, 2024

Nil.