

Generation and Reservoirs Statistics

February 5, 2024



PUBLIC UTILITIES COMMISSION OF SRI LANKA

1. Daily Generation Mix in MWh

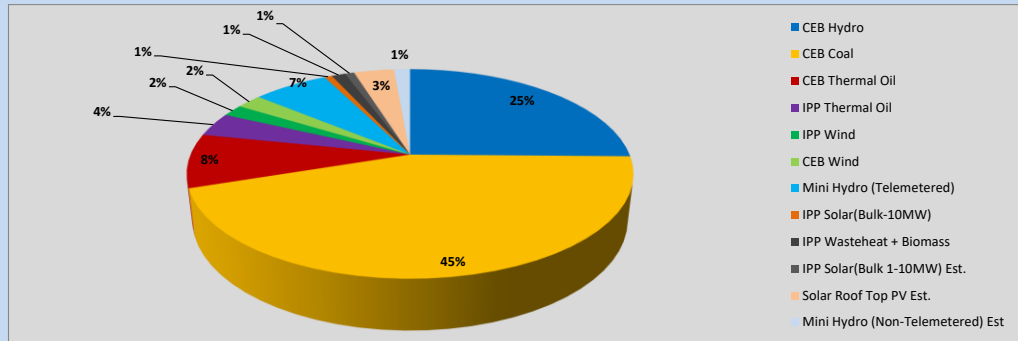


Table 01

	Generation (MWh)
CEB Hydro	10,676
CEB Coal	18,872
CEB Thermal Oil	3,517
IPP Thermal Oil	1,558
IPP Wind	774
CEB Wind	933
Mini Hydro (Telemetered)	2,756
IPP Solar (Bulk)	278
IPP Waste heat + Biomass	502
Total Generation (Excluding estimated figures)	39,866
* Estimated unserved energy	0
* Estimated Mini Hydro (Non telemetered)	587
* Estimated IPP Solar PV (Bulk 1-10MW)	338
* Estimated Solar Roof Top PV	1470
Total Generation (Including estimated figures)	42,261

* Estimated figures of CEB generation report

Table 02

	Installed Capacity (MW)
CEB Hydro	1409
CEB Coal	810
CEB Thermal Oil	781
IPP Thermal Oil (West Coast, ACE Matara and ACE Embilipitiya)	387
IPP Wind	148
CEB Wind	100
Mini Hydro	422
IPP Waste heat + Biomass	50
IPP Solar	136
Rooftop Solar (Ordinary)	277
Rooftop Solar (LT Bulk)	263
Rooftop Solar (HT Bulk)	70

Data Source - Monthly Review Report [Aug-2023]

2. Cumulative Dispatch

Following data excludes the contribution from roof top solar, non telemetered solar and mini hydro plants

Table 03 - Current Month

Category	Dispatch (GWh)	
CEB Hydro	61	29.25%
CEB Coal	94	45.10%
CEB Thermal Oil	14	6.94%
IPP Thermal	2	0.75%
SPP Wind	3	1.21%
CEB Wind	3	1.47%
Mini Hydro *	19	9.00%
IPP Solar *	11	5.16%
IPP Waste heat + BMP	2	1.11%
Total	208	

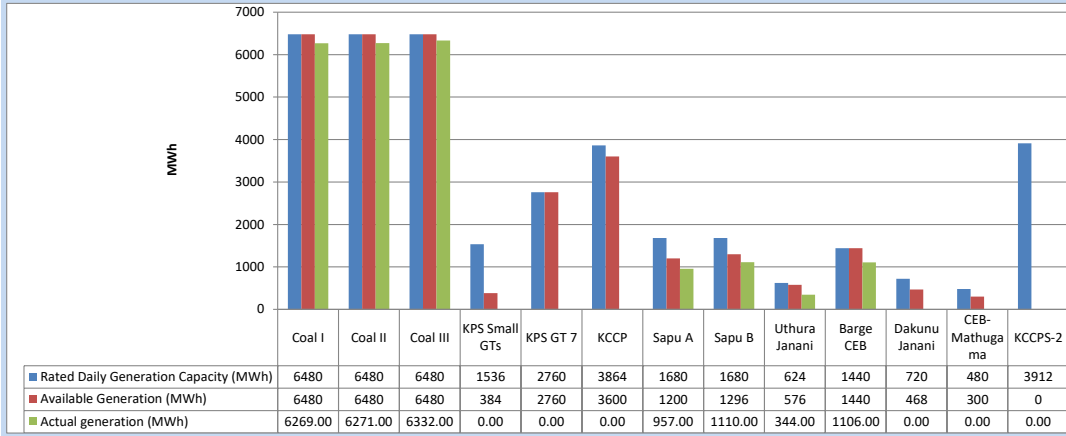
Table 04 - Current Year

Category	Dispatch (GWh)	
CEB Hydro	692	46.01%
CEB Coal	418	27.76%
CEB Thermal Oil	72	4.78%
IPP Thermal	47	3.14%
SPP Wind	19	1.27%
CEB Wind	25	1.66%
Mini Hydro *	138	9.16%
IPP Solar *	80	5.33%
IPP Waste heat	13	0.89%
Total	1,504	

*Including estimated contribution from non telemetered plants

3. CEB owned Thermal Plant Dispatch

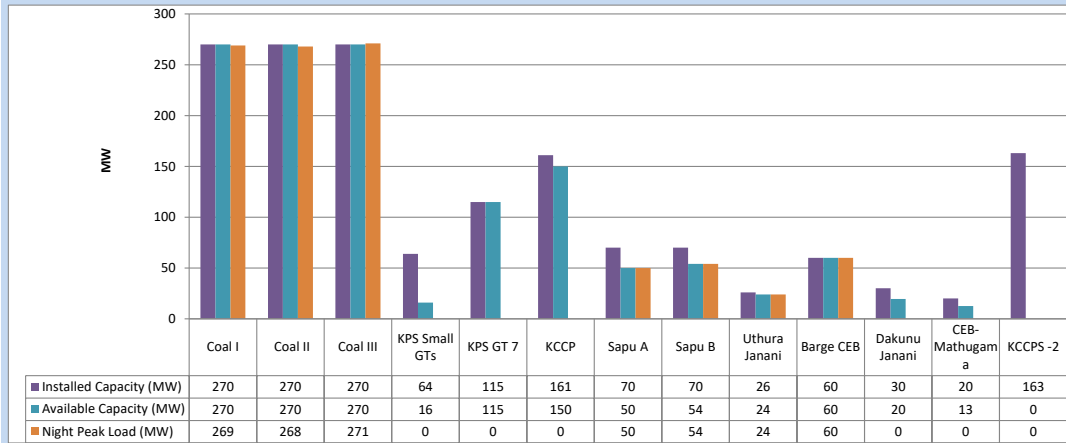
February 5, 2024



Available Generation is estimated based on plant availability at 6.00am on

February 6, 2024

4. CEB owned Thermal Plant Loading at the Night Peak

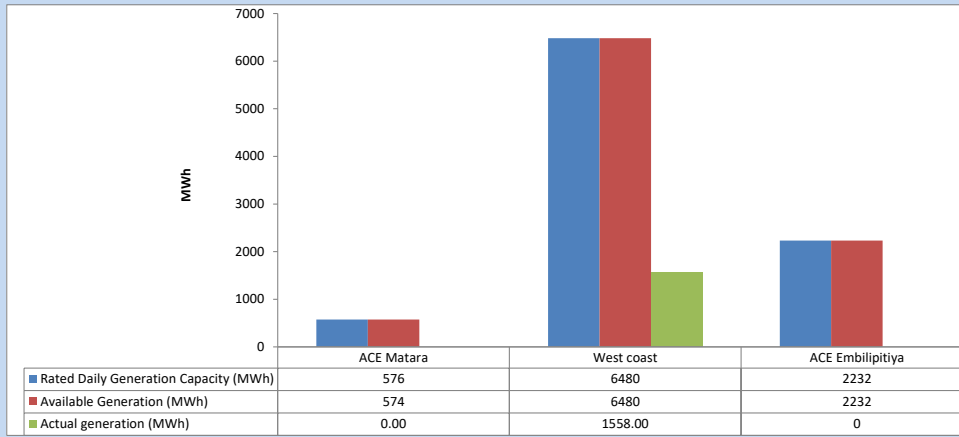


Plant availability is recorded at 6.00 am on

February 6, 2024

5. IPP owned Thermal Plant Dispatch

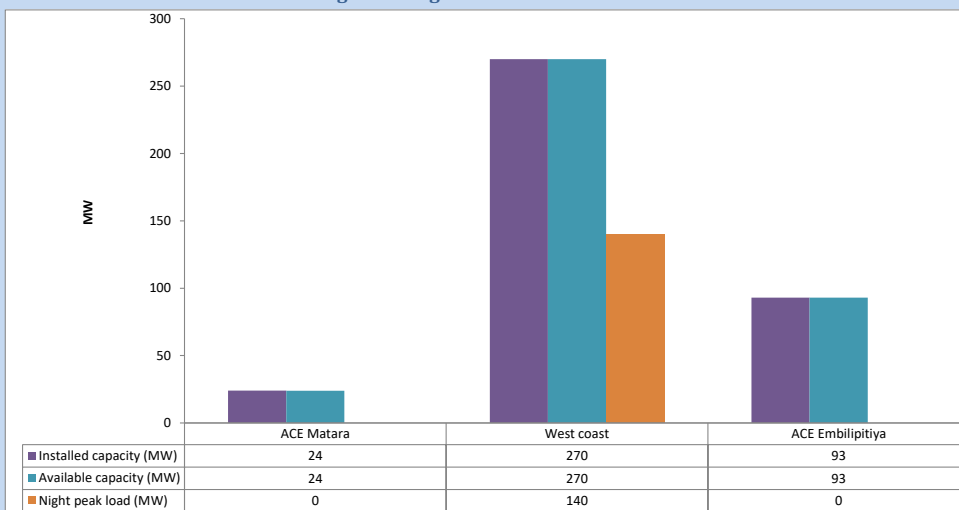
February 5, 2024



Available Generation is estimated based on plant availability at 6.00am on

February 6, 2024

6. IPP owned Thermal Plant Loading at the Night Peak

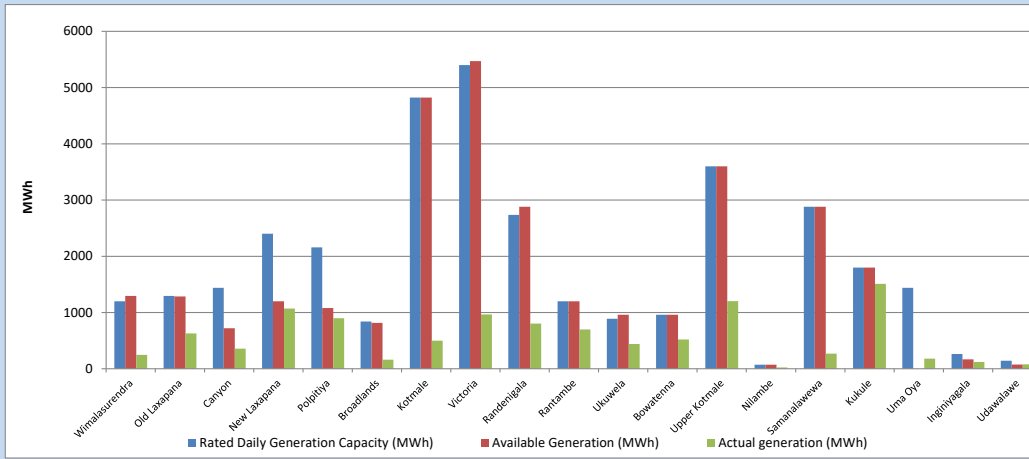


Plant availability is recorded at 6.00 am on

February 6, 2024

7. Major Hydro Plant Dispatch

February 5, 2024

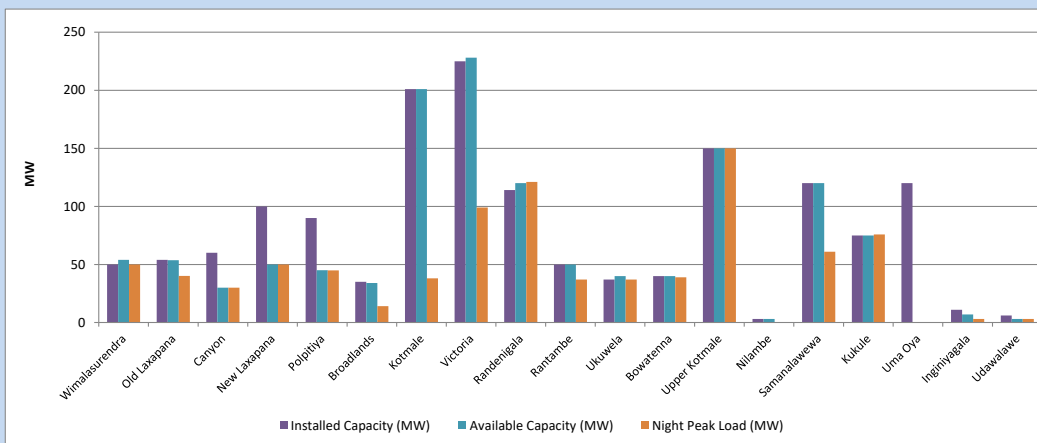


Available Generation is estimated based on plant availability at 6.00am on
Broadlands power plant is operating in the Commissioning Stage

February 6, 2024

8. Major Hydro Plant Loading at Night Peak

February 5, 2024



Plant availability is recorded at 6.00 am on
Broadlands power plant is operating in the Commissioning Stage

February 6, 2024

9. Summary of Major Plant performance

Table 05

Plant	Installed Capacity	Plant Availability	Night peak Load	Plant Dispatch
	(MW)	(MW)	(MW)	(MWh)
Wimalasurendra	50	54	50	247
Old Laxapana	54	54	40	629
Canyon	60	30	30	357
New Laxapana	100	50	50	1,071
Polpitiya	90	45	45	900
Broadlands	35	34	14	162
Kotmale	201	201	38	500
Victoria	225	228	99	966
Randerigala	114	120	121	803
Rantambe	50	50	37	699
Ukuwela	37	40	37	440
Bowatenna	40	40	39	520
Upper Kotmale	150	150	150	1,202
Nilambe	3	3	0	24
Samanalawewa	120	120	61	268
Kukule	75	75	76	1,511
Uma Oya (Testing)	120	0	0	179
Inginiyagala	11	7	3	120
Udawalawe	6	3	3	78
Puttalam Coal I	270	270	269	6,269
Puttalam Coal II	270	270	268	6,271
Puttalam Coal III	270	270	271	6,332
KPS Small GTs	64	16	0	0
KPS GT 7	115	115	0	0
KCCP	161	150	0	0
Sapugaskanda A	70	50	50	957
Sapugaskanda B	70	54	54	1,110
Uthura Janani	26	24	24	344
Barge CEB	60	60	60	1,106
CEB-Hambantota	30	20	0	0
CEB-Mathugama	20	13	0	0
ACE Matara	24	24	0	0
Asia Power	50	0	0	0
KCCPS -2	163	0	0	0
West Coast	270	270	140	1,558
Nothern Power	36	0	0	0
ACE Embilipitiya	93	93	0	0
Total	3,603	3,002	2,126	39,866

Plant availability is the availability recorded at 6 am on

February 6, 2024

10. Contribution to the Night Peak in MW

February 5, 2024

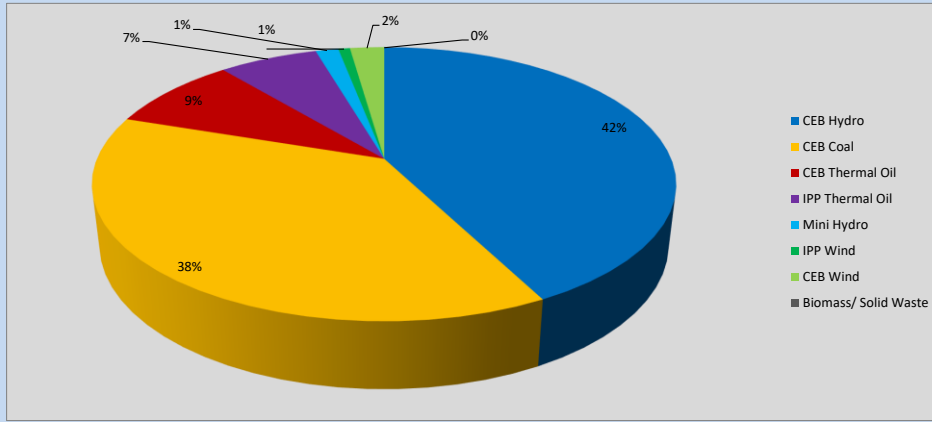


Table 06

CEB Hydro	907	MW
CEB Coal	808	MW
CEB Thermal Oil	188	MW
IPP Thermal Oil	140	MW
Mini Hydro (Telemetered)	32	MW
IPP Wind	16.5	MW
CEB Wind	48.5	MW
Biomass/ Solid Waste	0	MW

Recorded Peak Demand Data

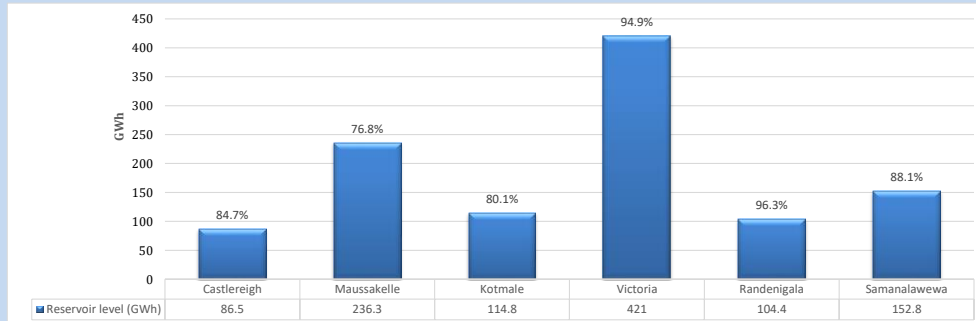
Table 07

Night Peak*	2,140	MW
Day Peak Maximum Demand	1,953	MW
Day Peak Minimum Demand	1,579	MW
Off Peak Minimum Demand	1,163	MW

Above figures are excluding contribution from roof top solar, non telemetered solar and mini hydro plants

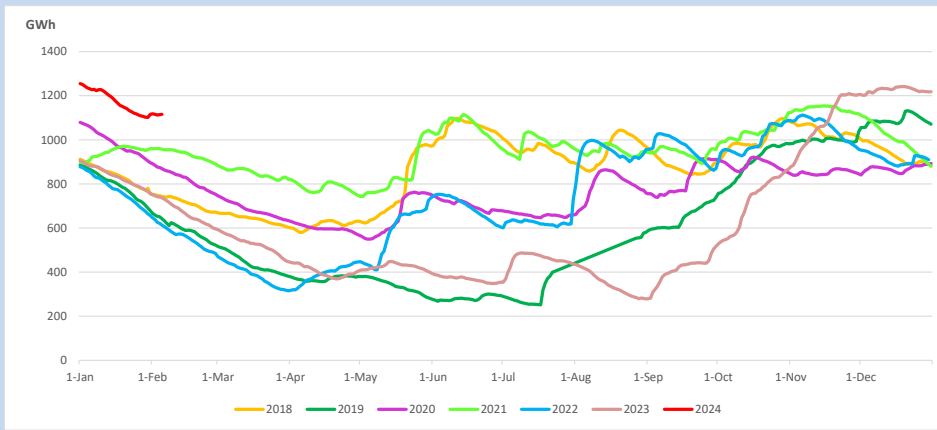
Reservoir Levels -

as at 06.00 Hr on February 6, 2024

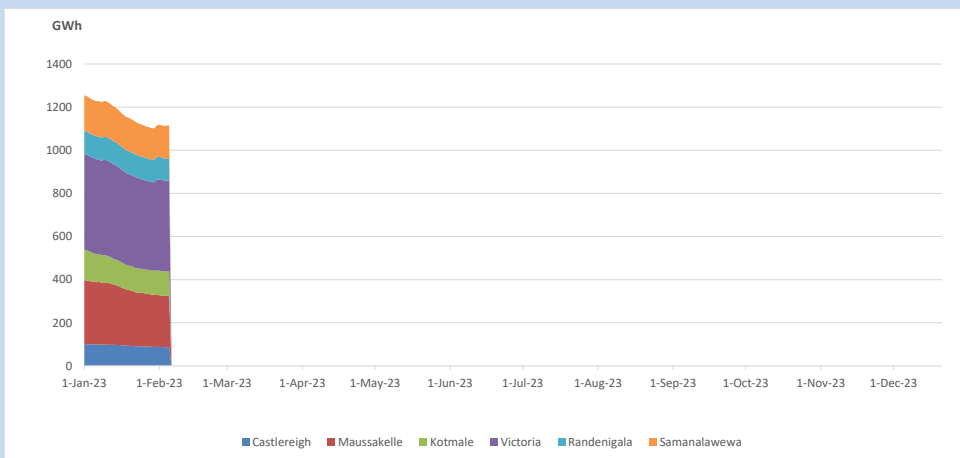


Total Reservoir Level 1115.8 GWh
 % of Total capacity 87.3%

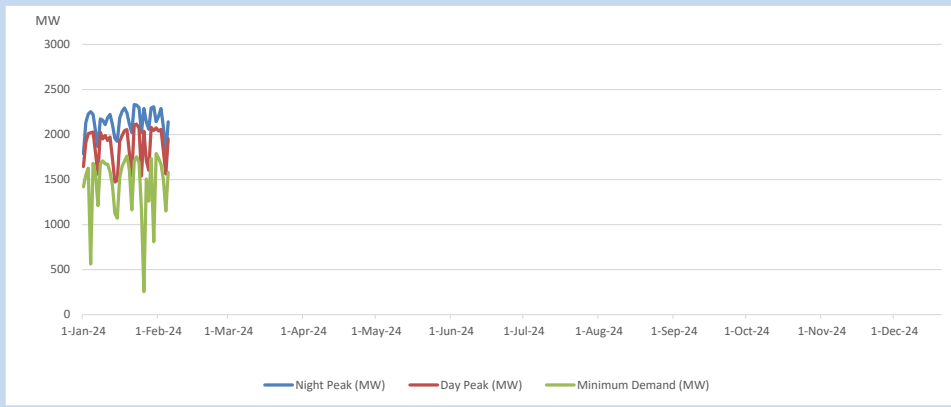
11. Comparison of Total Reservoir Storage Levels with Past Years



12. Variation of Major Hydro Reservoir Levels in the current year (GWh)



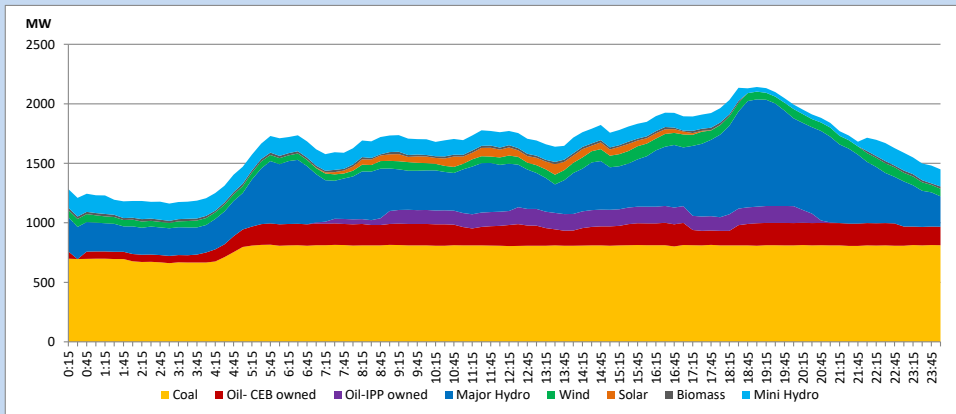
13. Variation of Demand during the current year



The above figures are excluding contribution from roof top solar, non telemetered solar and mini hydro plants

14. Daily Load Curve

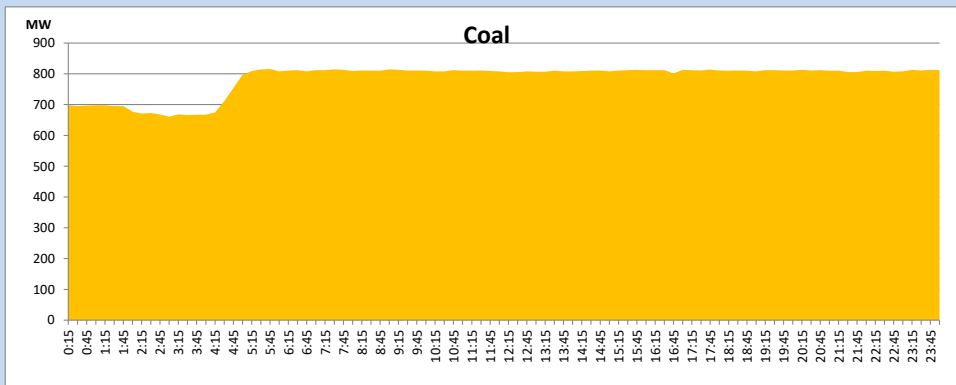
February 5, 2024



Solar and wind data is based on Telemetered Power Stations only

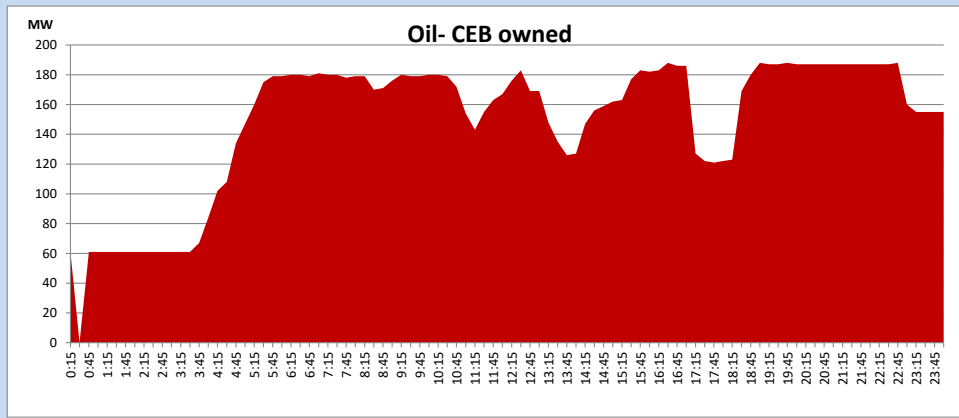
Coal Generation during

February 5, 2024



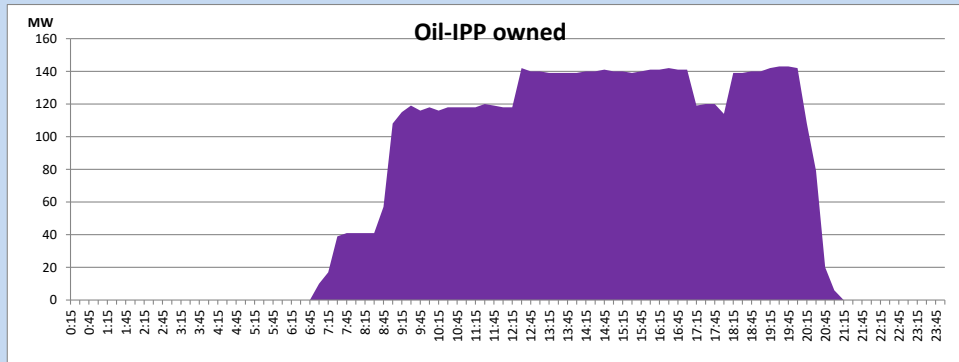
CEB Oil Plant Generation during

February 5, 2024



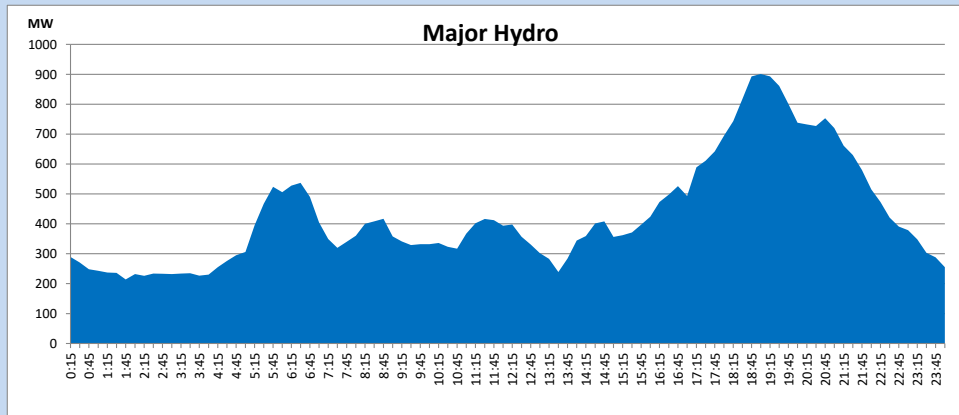
IPP Oil Plant Generation during

February 5, 2024



Major Hydro Generation during

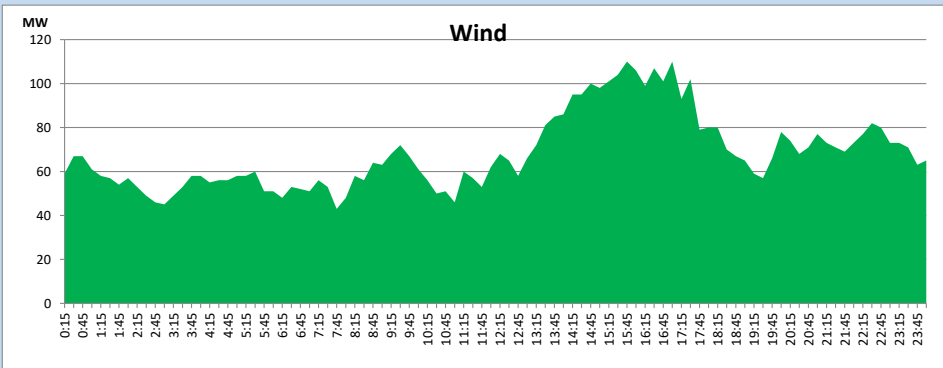
February 5, 2024



Wind Generation during

February 5, 2024

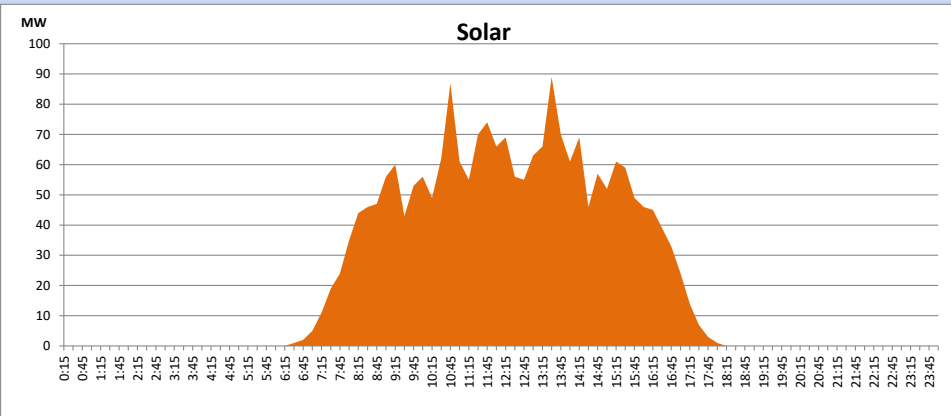
Based on Telemetered Power Stations only



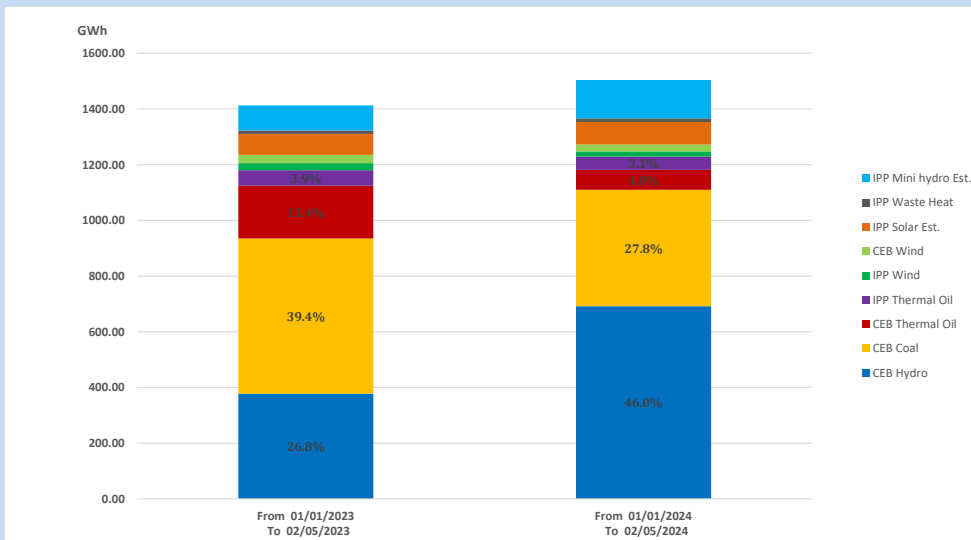
Solar Generation during

February 5, 2024

Based on Telemetered Power Stations only



15. Cumulative Dispatch Comparison with Last Year



Cumulative dispatch
 From 01/01/2023 To 02/05/2023
 From 01/01/2024 To 02/05/2024

1413 GWh
 1504 GWh

The above figures are including contribution from roof top solar, non telemetered solar and mini hydro plants)
 Unserved energy in 2023 has been excluded

Thermal Plant Fuel types

Table 08

Power Station	Primary Fuel
CEB Thermal	
Sapugaskanda 1	Heavy Fuel
Sapugaskanda 2	Heavy Fuel
Kelanitissa Small Gas Turbines	Auto Diesel
GT 7 - Kelanitissa	Auto Diesel
Kelanitissa CCY	Naphtha or Diesel
Lakvijaya 1	Coal
Lakvijaya 2	Coal
Lakvijaya 3	Coal
Uthuru Janani	Heavy Fuel
Barge CEB	Heavy Fuel
KCCPS -2	Auto Diesel

Power Station	Primary Fuel
Private Thermal	
West Coast	Auto Diesel / Heavy Fuel
ACE Matara	Heavy Fuel
ACE Embilipitiya	Heavy Fuel

Major Incidents reported during the day

February 5, 2024

Nil