

Generation and Reservoirs Statistics

February 4, 2024



PUBLIC UTILITIES COMMISSION OF SRI LANKA

1. Daily Generation Mix in MWh

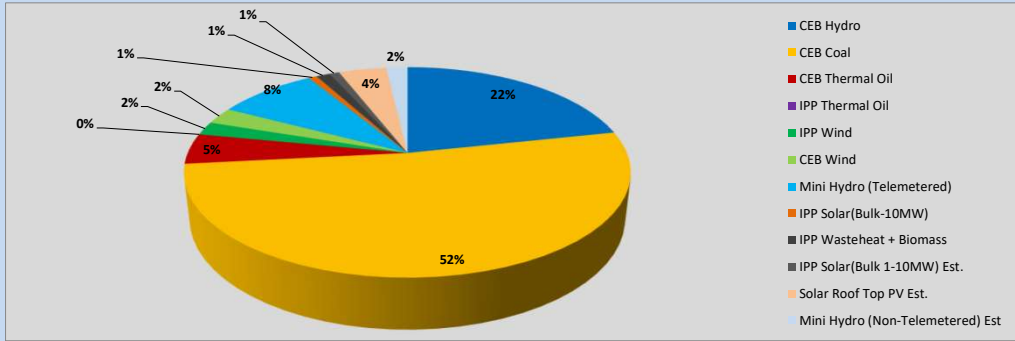


Table 01

	Generation (MWh)
CEB Hydro	7,708
CEB Coal	18,389
CEB Thermal Oil	1,671
IPP Thermal Oil	-
IPP Wind	737
CEB Wind	918
Mini Hydro (Telemetered)	3,059
IPP Solar (Bulk)	259
IPP Waste heat + Biomass	418
Total Generation (Excluding estimated figures)	33,159
* Estimated unserved energy	0
* Estimated Mini Hydro (Non telemetered)	654
* Estimated IPP Solar PV (Bulk 1-10MW)	304
* Estimated Solar Roof Top PV	1470
Total Generation (Including estimated figures)	35,587

* Estimated figures of CEB generation report

Table 02

	Installed Capacity (MW)
CEB Hydro	1409
CEB Coal	810
CEB Thermal Oil	781
IPP Thermal Oil (West Coast, ACE Matara and ACE Embilipitiya)	387
IPP Wind	148
CEB Wind	100
Mini Hydro	422
IPP Waste heat + Biomass	50
IPP Solar	136
Rooftop Solar (Ordinary)	277
Rooftop Solar (LT Bulk)	263
Rooftop Solar (HT Bulk)	70

Data Source - Monthly Review Report [Aug-2023]

2. Cumulative Dispatch

Following data excludes the contribution from roof top solar, non telemetered solar and mini hydro plants

Table 03 - Current Month

Category	Dispatch (GWh)	
CEB Hydro	50	30.27%
CEB Coal	75	45.21%
CEB Thermal Oil	11	6.59%
IPP Thermal	0	0.00%
SPP Wind	2	1.06%
CEB Wind	2	1.29%
Mini Hydro *	15	9.27%
IPP Solar *	9	5.22%
IPP Waste heat + BMP	2	1.09%
Total	165	

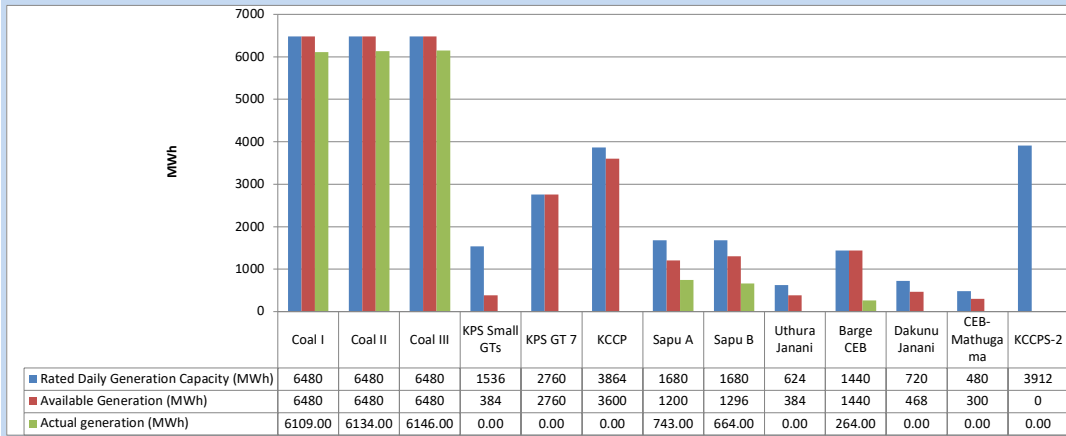
Table 04 - Current Year

Category	Dispatch (GWh)	
CEB Hydro	681	46.61%
CEB Coal	399	27.27%
CEB Thermal Oil	68	4.68%
IPP Thermal	46	3.13%
SPP Wind	18	1.25%
CEB Wind	24	1.64%
Mini Hydro *	134	9.19%
IPP Solar *	78	5.34%
IPP Waste heat	13	0.88%
Total	1,462	

*Including estimated contribution from non telemetered plants

3. CEB owned Thermal Plant Dispatch

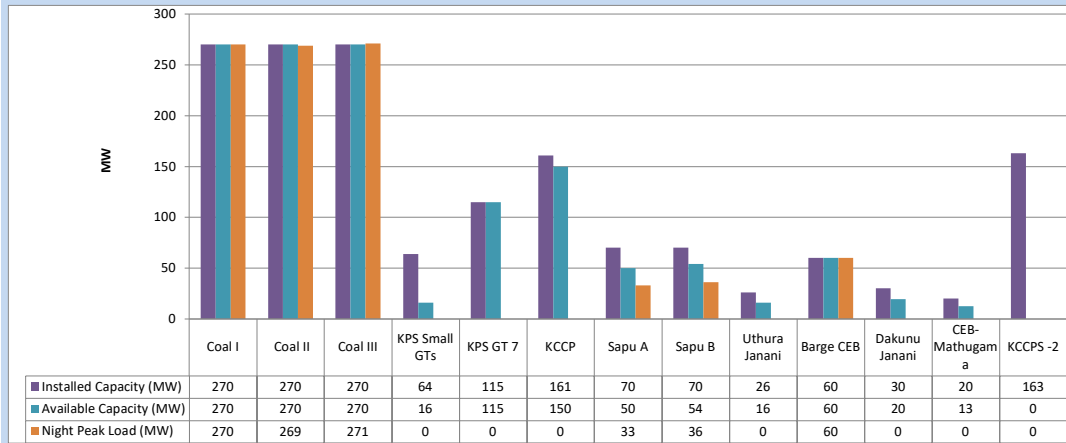
February 4, 2024



Available Generation is estimated based on plant availability at 6.00am on

February 5, 2024

4. CEB owned Thermal Plant Loading at the Night Peak

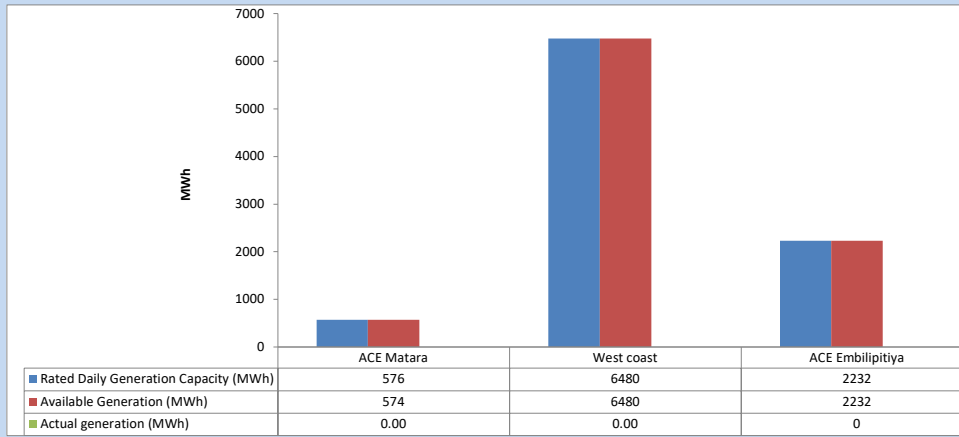


Plant availability is recorded at 6.00 am on

February 5, 2024

5. IPP owned Thermal Plant Dispatch

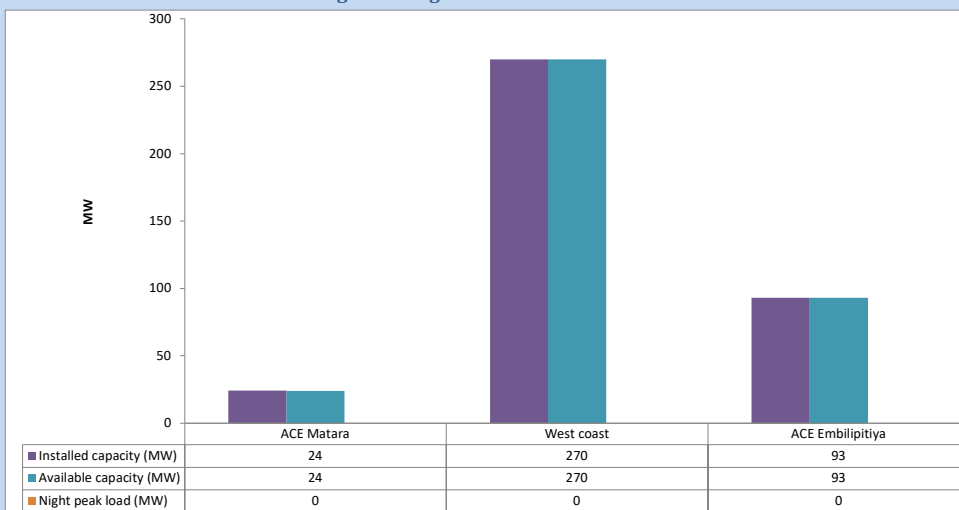
February 4, 2024



Available Generation is estimated based on plant availability at 6.00am on

February 5, 2024

6. IPP owned Thermal Plant Loading at the Night Peak

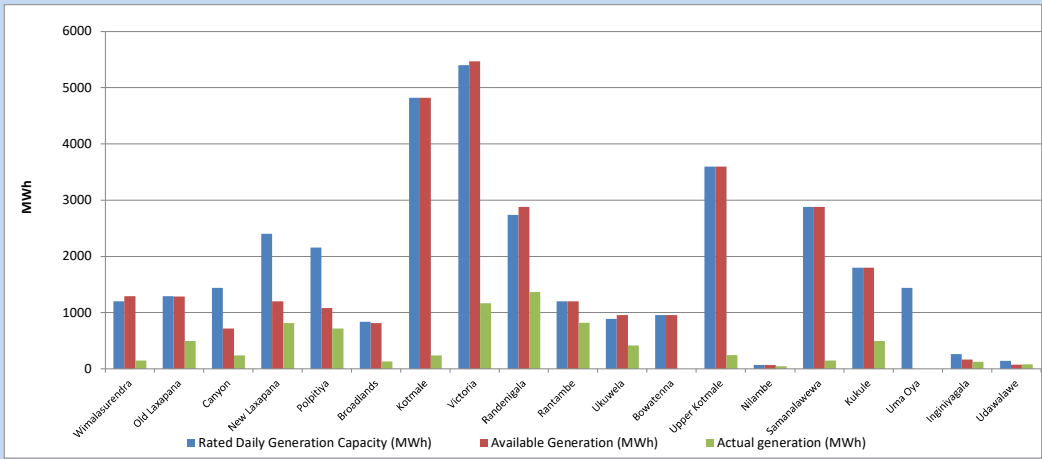


Plant availability is recorded at 6.00 am on

February 5, 2024

7. Major Hydro Plant Dispatch

February 4, 2024

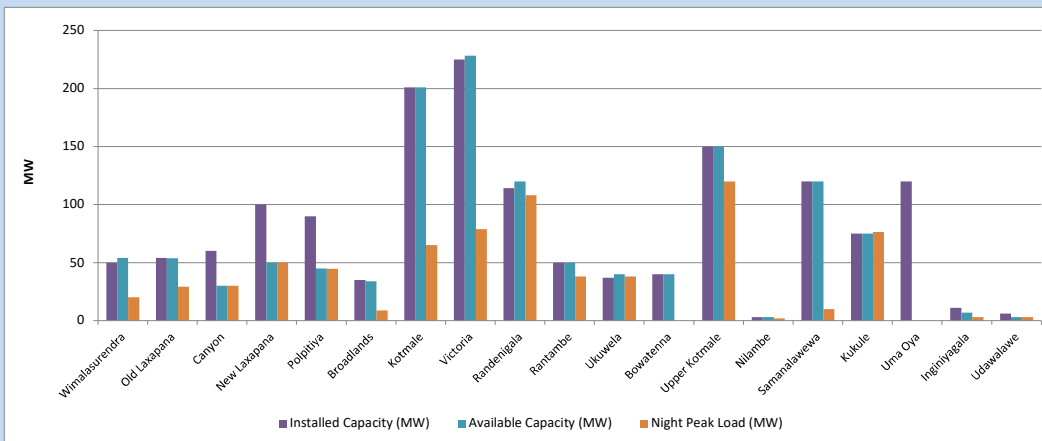


Available Generation is estimated based on plant availability at 6.00am on
Broadlands power plant is operating in the Commissioning Stage

February 5, 2024

8. Major Hydro Plant Loading at Night Peak

February 4, 2024



Plant availability is recorded at 6.00 am on
Broadlands power plant is operating in the Commissioning Stage

February 5, 2024

9. Summary of Major Plant performance

Table 05

Plant	Installed Capacity	Plant Availability	Night peak Load	Plant Dispatch
	(MW)	(MW)	(MW)	(MWh)
Wimalasurendra	50	54	20	152
Old Laxapana	54	54	29	499
Canyon	60	30	30	238
New Laxapana	100	50	50	815
Polpitiya	90	45	45	720
Broadlands	35	34	9	132
Kotmale	201	201	65	240
Victoria	225	228	79	1,168
Randerigala	114	120	108	1,366
Rantambe	50	50	38	822
Ukuwela	37	40	38	417
Bowatenna	40	40	0	0
Upper Kotmale	150	150	120	245
Nilambe	3	3	2	43
Samanalawewa	120	120	10	151
Kukule	75	75	76	495
Uma Oya (Testing)	120	0	0	0
Inginiyagala	11	7	3	127
Udawalawe	6	3	3	78
Puttalam Coal I	270	270	270	6,109
Puttalam Coal II	270	270	269	6,134
Puttalam Coal III	270	270	271	6,146
KPS Small GTs	64	16	0	0
KPS GT 7	115	115	0	0
KCCP	161	150	0	0
Sapugaskanda A	70	50	33	743
Sapugaskanda B	70	54	36	664
Uthura Janani	26	16	0	0
Barge CEB	60	60	60	264
CEB-Hambantota	30	20	0	0
CEB-Mathugama	20	13	0	0
ACE Matara	24	24	0	0
Asia Power	50	0	0	0
KCCPS -2	163	0	0	0
West Coast	270	270	0	0
Nothern Power	36	0	0	0
ACE Embilipitiya	93	93	0	0
Total	3,603	2,994	1,770	33,159

Plant availability is the availability recorded at 6 am on

February 5, 2024

10. Contribution to the Night Peak in MW

February 4, 2024

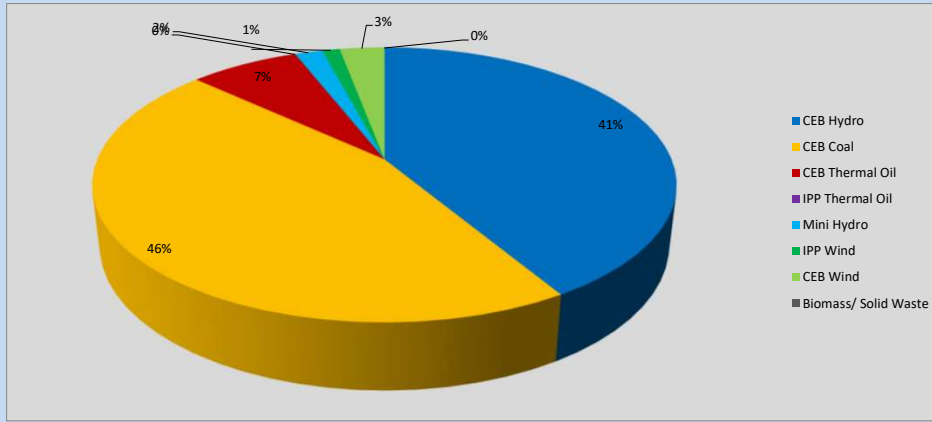


Table 06

CEB Hydro	737	MW
CEB Coal	810	MW
CEB Thermal Oil	129	MW
IPP Thermal Oil	0	MW
Mini Hydro (Telemetered)	33	MW
IPP Wind	20.8	MW
CEB Wind	52.8	MW
Biomass/ Solid Waste	0	MW

Recorded Peak Demand Data

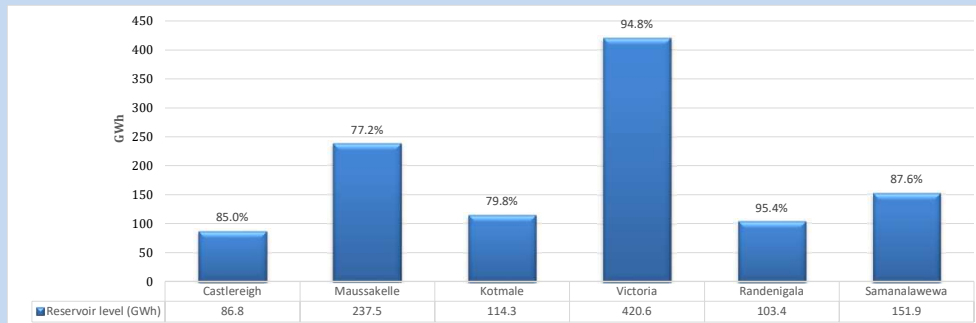
Table 07

Night Peak*	1,783	MW
Day Peak Maximum Demand	1,562	MW
Day Peak Minimum Demand	1,150	MW
Off Peak Minimum Demand	1,299	MW

Above figures are excluding contribution from roof top solar, non telemetered solar and mini hydro plants

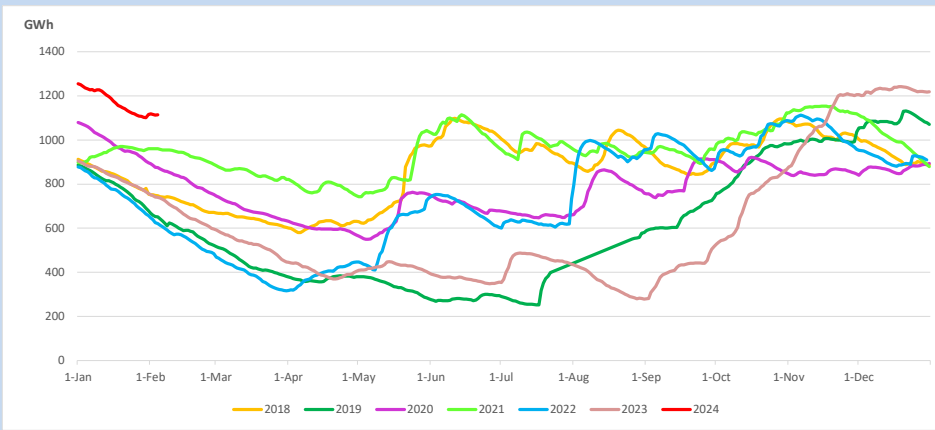
Reservoir Levels -

as at 06.00 Hr on February 5, 2024

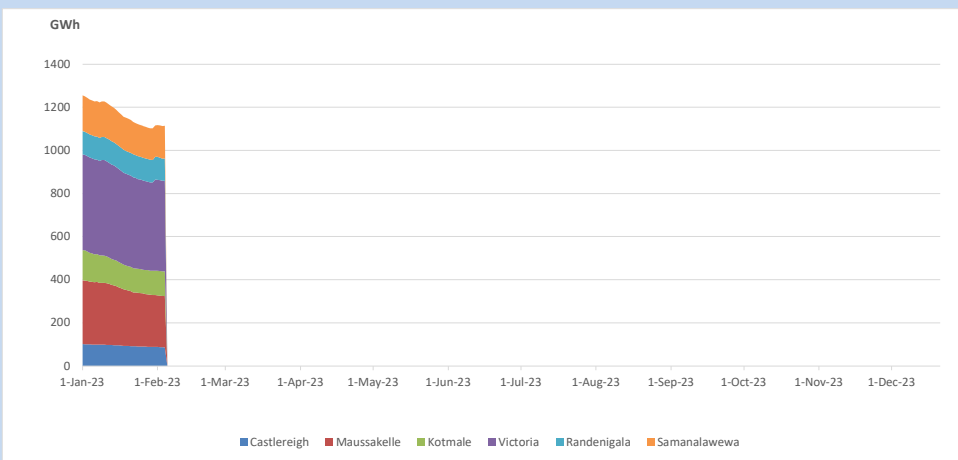


Total Reservoir Level 1114.5 GWh
 % of Total capacity 87.2%

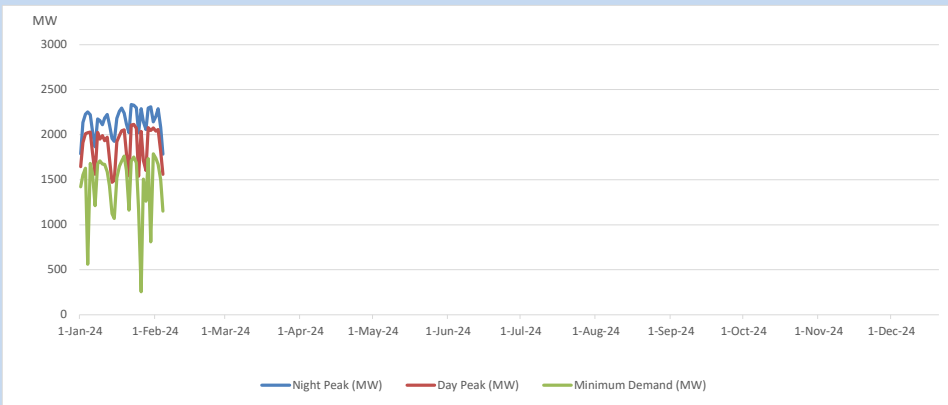
11. Comparison of Total Reservoir Storage Levels with Past Years



12. Variation of Major Hydro Reservoir Levels in the current year (GWh)



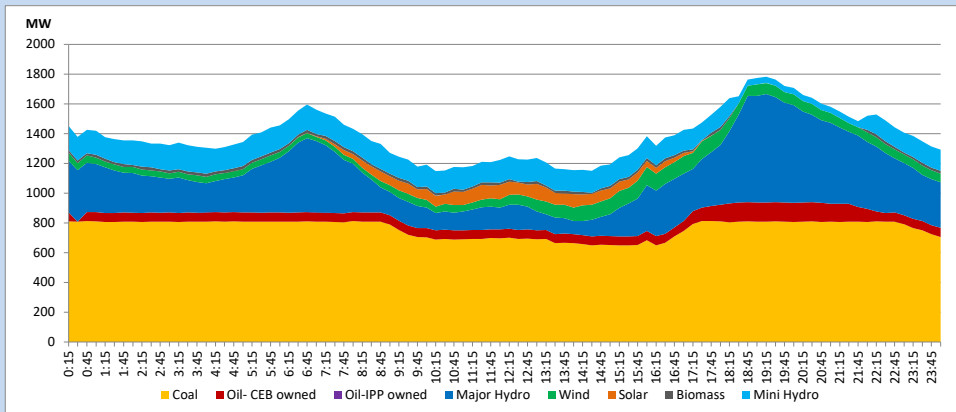
13. Variation of Demand during the current year



The above figures are excluding contribution from roof top solar, non telemetered solar and mini hydro plants

14. Daily Load Curve

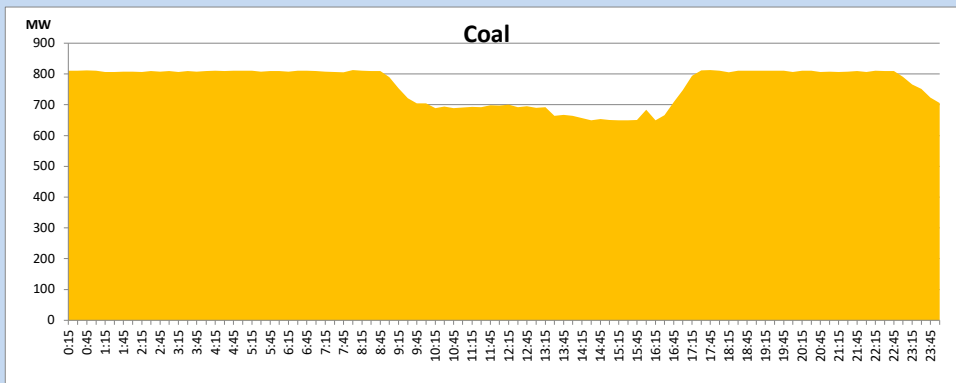
February 4, 2024



Solar and wind data is based on Telemetered Power Stations only

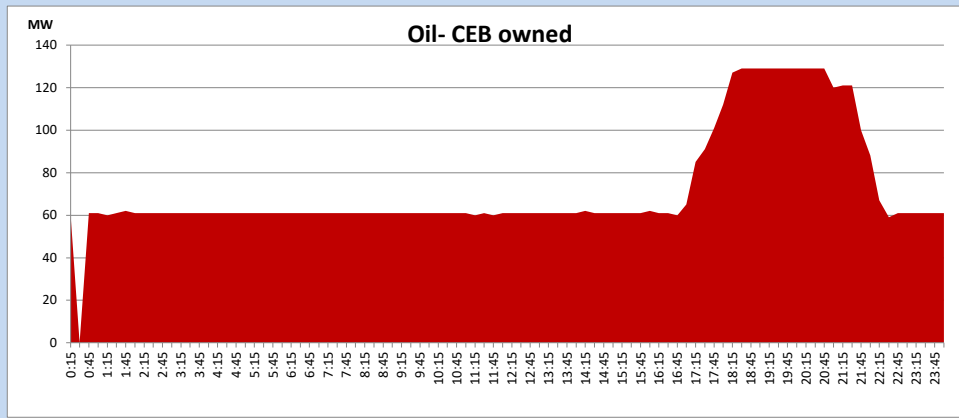
Coal Generation during

February 4, 2024



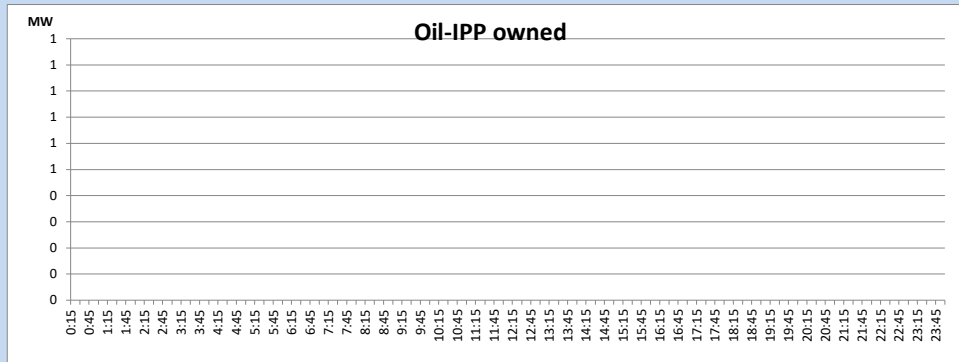
CEB Oil Plant Generation during

February 4, 2024



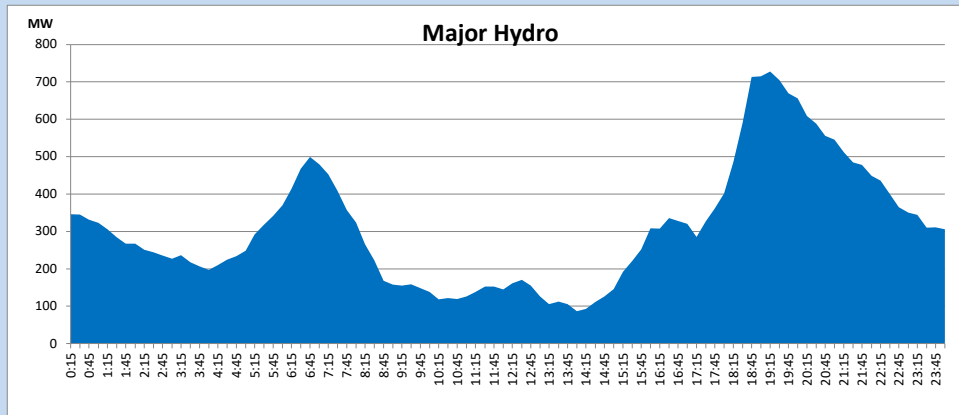
IPP Oil Plant Generation during

February 4, 2024



Major Hydro Generation during

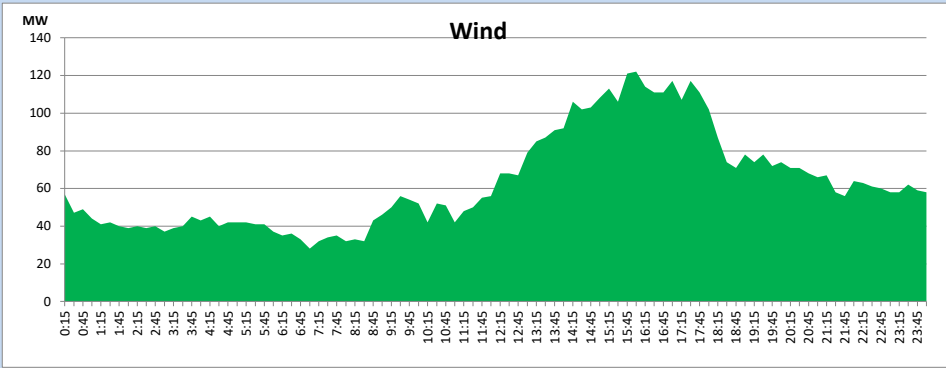
February 4, 2024



Wind Generation during

February 4, 2024

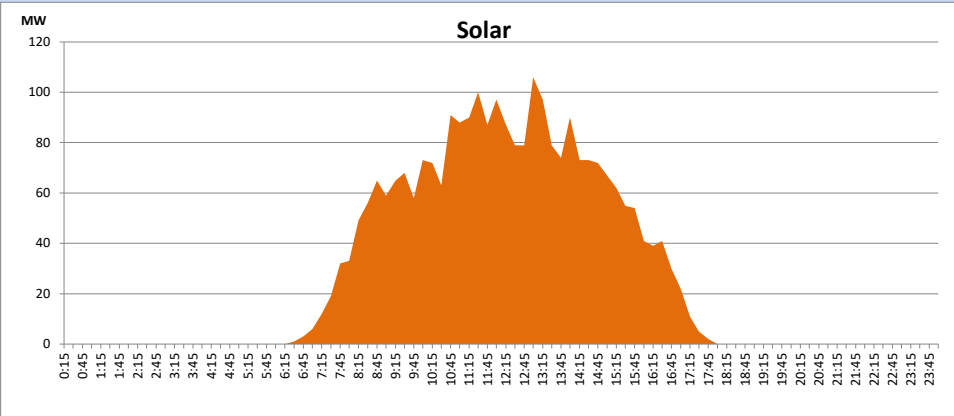
Based on Telemetered Power Stations only



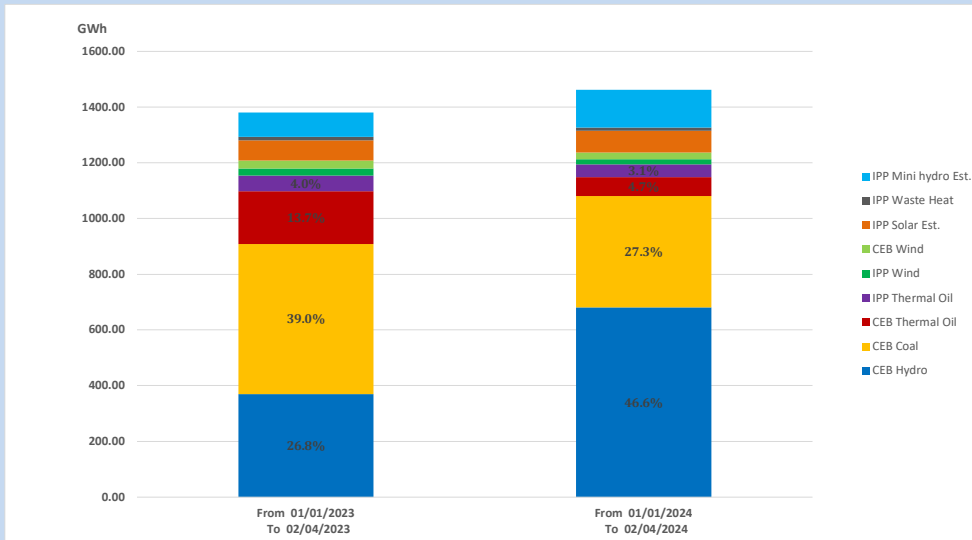
Solar Generation during

February 4, 2024

Based on Telemetered Power Stations only



15. Cumulative Dispatch Comparison with Last Year



Cumulative dispatch
 From 01/01/2023 To 02/04/2023
 From 01/01/2024 To 02/04/2024

1381 GWh
 1462 GWh

The above figures are including contribution from roof top solar, non telemetered solar and mini hydro plants)
 Unserved energy in 2023 has been excluded

Thermal Plant Fuel types

Table 08

Power Station	Primary Fuel
CEB Thermal	
Sapugaskanda 1	Heavy Fuel
Sapugaskanda 2	Heavy Fuel
Kelanitissa Small Gas Turbines	Auto Diesel
GT 7 - Kelanitissa	Auto Diesel
Kelanitissa CCY	Naphtha or Diesel
Lakvijaya 1	Coal
Lakvijaya 2	Coal
Lakvijaya 3	Coal
Uthuru Janani	Heavy Fuel
Barge CEB	Heavy Fuel
KCCPS -2	Auto Diesel

Power Station	Primary Fuel
Private Thermal	
West Coast	Auto Diesel / Heavy Fuel
ACE Matara	Heavy Fuel
ACE Embilipitiya	Heavy Fuel

Major Incidents reported during the day

February 4, 2024

1) Embilipitiya 132/33kV T/F 01 tripped from both ends at 16:00hrs along with 33kV feeder 02 and 33kV B/S CB, due to the operatio of O/C protection, causing all feeders of 33kV B/S 01 to be dead. The 33kV B/S CB and all affected feeders except feeder 02 were normalized by 16:12hrs. The T/F 01 was normalized by 16:17 hrs