

# Generation and Reservoirs Statistics

February 1, 2024



PUBLIC UTILITIES COMMISSION OF SRI LANKA

## 1. Daily Generation Mix in MWh

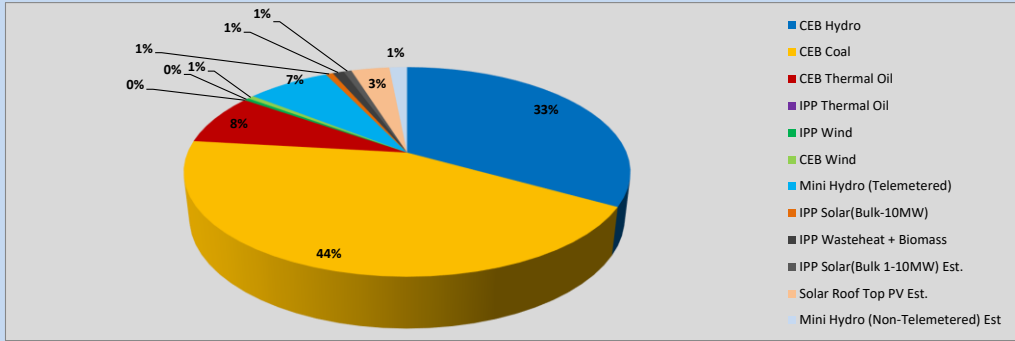


Table 01

	Generation (MWh)
CEB Hydro	14,713
CEB Coal	19,419
CEB Thermal Oil	3,494
IPP Thermal Oil	-
IPP Wind	184
CEB Wind	241
Mini Hydro (Telemetered)	3,194
IPP Solar (Bulk)	282
IPP Waste heat + Biomass	430
<b>Total Generation (Excluding estimated figures)</b>	<b>41,957</b>
* Estimated unserved energy	0
* Estimated Mini Hydro (Non telemetered)	681
* Estimated IPP Solar PV (Bulk 1-10MW)	304
* Estimated Solar Roof Top PV	1470
<b>Total Generation (Including estimated figures)</b>	<b>44,412</b>

\* Estimated figures of CEB generation report

Table 02

	Installed Capacity (MW)
CEB Hydro	1409
CEB Coal	810
CEB Thermal Oil	781
IPP Thermal Oil (West Coast, ACE Matara and ACE Embilipitiya)	387
IPP Wind	148
CEB Wind	100
Mini Hydro	422
IPP Waste heat + Biomass	50
IPP Solar	136
Rooftop Solar (Ordinary)	277
Rooftop Solar (LT Bulk)	263
Rooftop Solar (HT Bulk)	70

Data Source - Monthly Review Report [Aug-2023]

## 2. Cumulative Dispatch

Following data excludes the contribution from roof top solar, non telemetered solar and mini hydro plants

Table 03 - Current Month

Category	Dispatch (GWh)	
CEB Hydro	15	33.14%
CEB Coal	19	43.75%
CEB Thermal Oil	3	7.86%
IPP Thermal	0	0.00%
SPP Wind	0	0.41%
CEB Wind	0	0.54%
Mini Hydro *	4	8.72%
IPP Solar *	2	4.62%
IPP Waste heat + BMP	0	0.97%
<b>Total</b>	<b>44</b>	

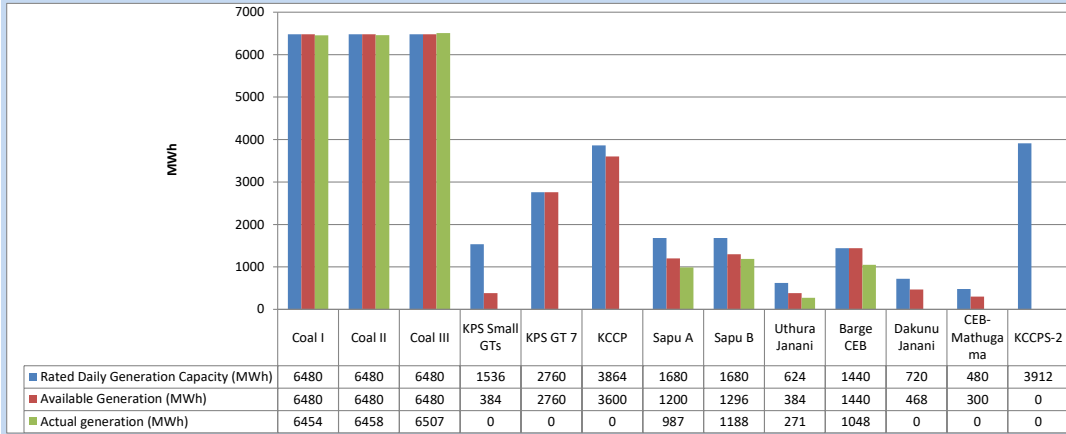
Table 04 - Current Year

Category	Dispatch (GWh)	
CEB Hydro	646	48.18%
CEB Coal	343	25.61%
CEB Thermal Oil	61	4.55%
IPP Thermal	46	3.41%
SPP Wind	17	1.24%
CEB Wind	22	1.65%
Mini Hydro *	123	9.17%
IPP Solar *	72	5.33%
IPP Waste heat	11	0.86%
<b>Total</b>	<b>1,341</b>	

\*Including estimated contribution from non telemetered plants

### 3. CEB owned Thermal Plant Dispatch

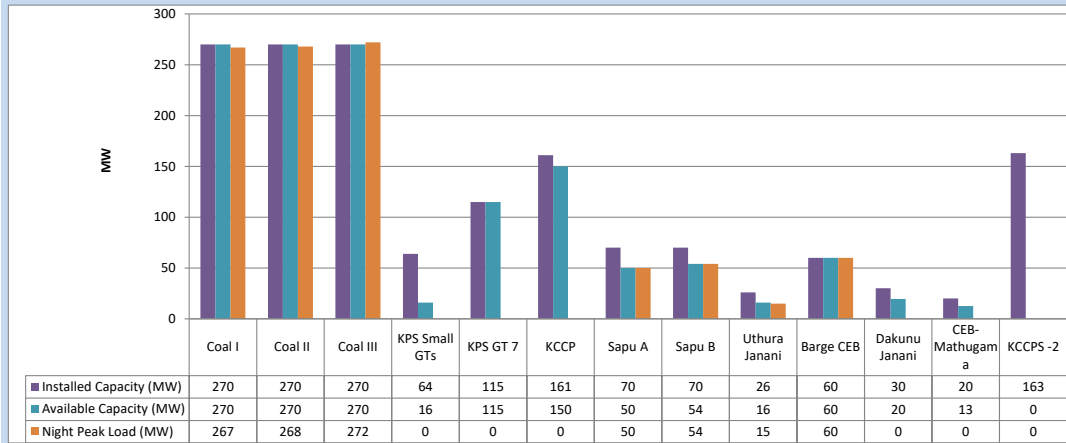
February 1, 2024



Available Generation is estimated based on plant availability at 6.00am on

February 2, 2024

### 4. CEB owned Thermal Plant Loading at the Night Peak

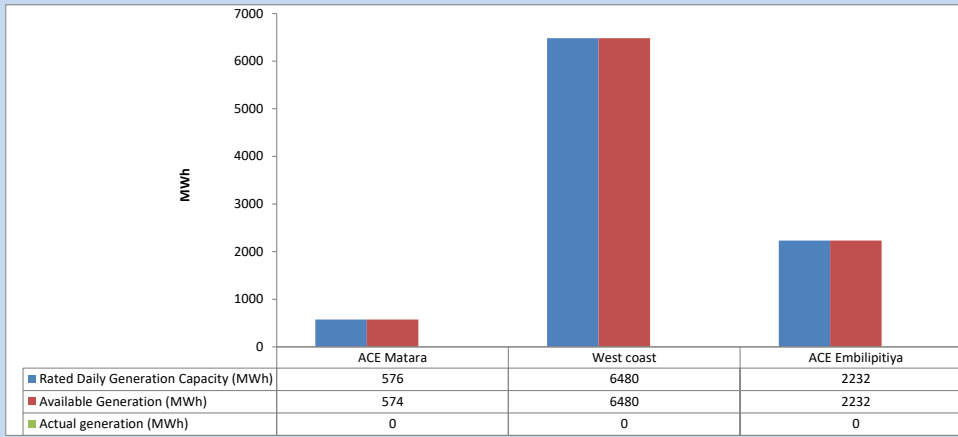


Plant availability is recorded at 6.00 am on

February 2, 2024

### 5. IPP owned Thermal Plant Dispatch

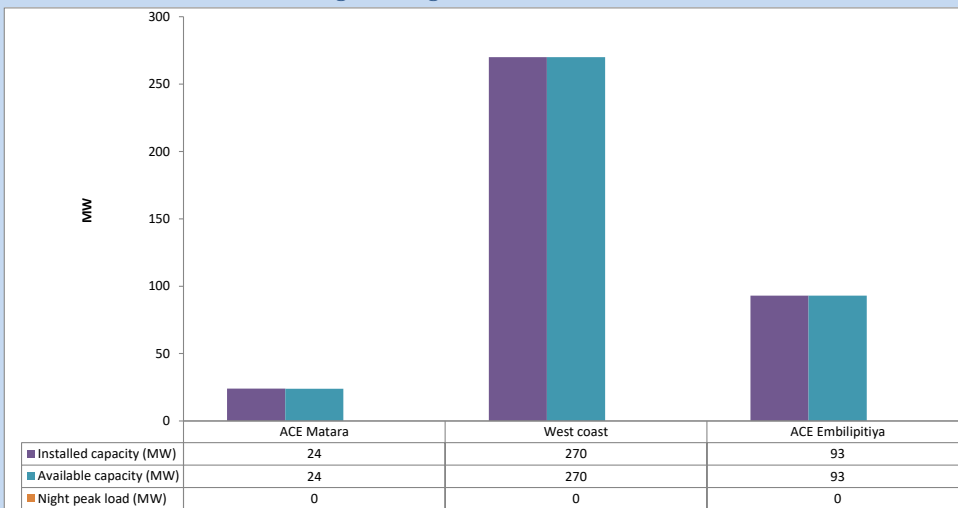
February 1, 2024



Available Generation is estimated based on plant availability at 6.00am on

February 2, 2024

### 6. IPP owned Thermal Plant Loading at the Night Peak

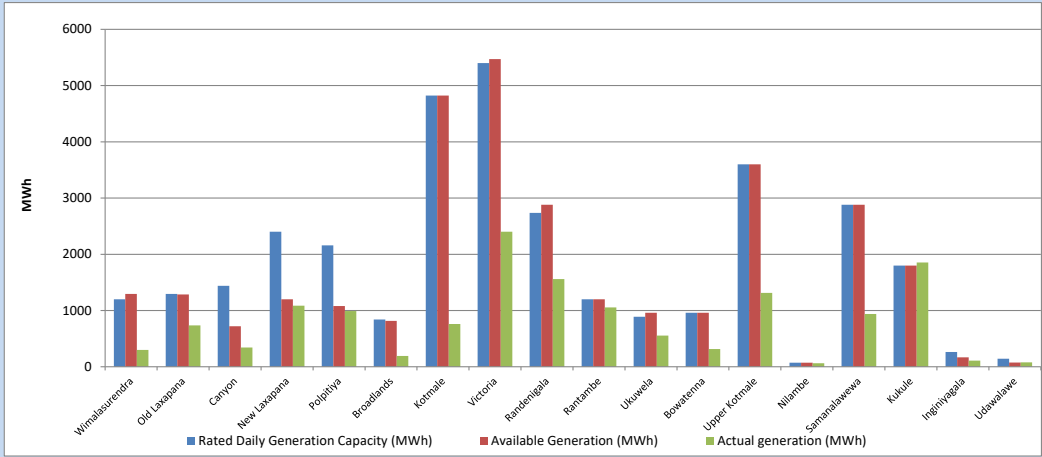


Plant availability is recorded at 6.00 am on

February 2, 2024

### 7. Major Hydro Plant Dispatch

February 1, 2024

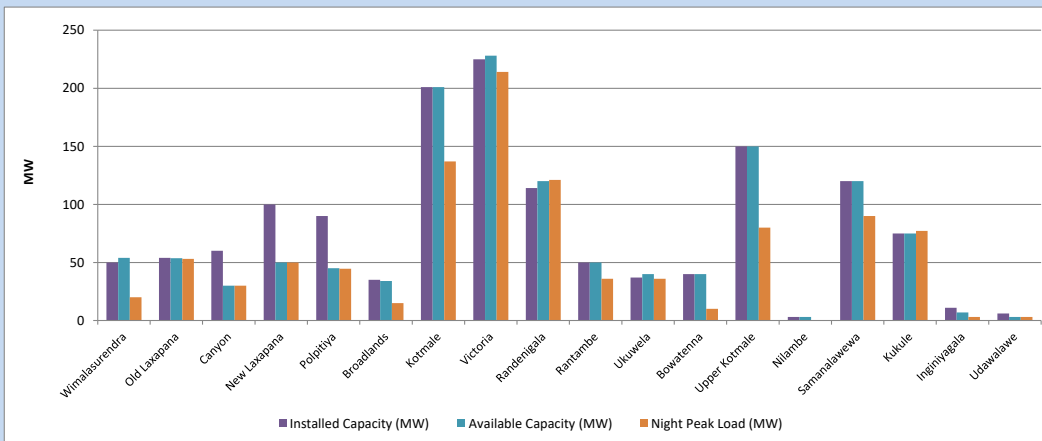


Available Generation is estimated based on plant availability at 6.00am on  
Broadlands power plant is operating in the Commissioning Stage

February 2, 2024

### 8. Major Hydro Plant Loading at Night Peak

February 1, 2024



Plant availability is recorded at 6.00 am on  
Broadlands power plant is operating in the Commissioning Stage

February 2, 2024

## 9. Summary of Major Plant performance

**Table 05**

Plant	Installed Capacity	Plant Availability	Night peak Load	Plant Dispatch
	(MW)	(MW)	(MW)	(MWh)
Wimalasurendra	50	54	20	301
Old Laxapana	54	54	53	736
Canyon	60	30	30	344
New Laxapana	100	50	50	1,087
Polpitiya	90	45	45	990
Broadlands	35	34	15	191
Kotmale	201	201	137	760
Victoria	225	228	214	2,400
Randerigala	114	120	121	1,558
Rantambe	50	50	36	1,056
Ukuwela	37	40	36	556
Bowatenna	40	40	10	315
Upper Kotmale	150	150	80	1,314
Nilambe	3	3	0	62
Samanalawewa	120	120	90	938
Kukule	75	75	77	1,854
Inginiyagala	11	7	3	110
Udawalawe	6	3	3	78
Puttalam Coal I	270	270	267	6,454
Puttalam Coal II	270	270	268	6,458
Puttalam Coal III	270	270	272	6,507
KPS Small GTs	64	16	0	0
KPS GT 7	115	115	0	0
KCCP	161	150	0	0
Sapugaskanda A	70	50	50	987
Sapugaskanda B	70	54	54	1,188
Uthura Janani	26	16	15	271
Barge CEB	60	60	60	1,048
CEB-Hambantota	30	20	0	0
CEB-Mathugama	20	13	0	0
ACE Matara	24	24	0	0
Asia Power	50	0	0	0
KCCPS -2	163	0	0	0
West Coast	270	270	0	0
Nothorn Power	36	0	0	0
ACE Embilipitiya	93	93	0	0
<b>Total</b>	<b>3,483</b>	<b>2,994</b>	<b>2,187</b>	<b>41,894</b>

Plant availability is the availability recorded at 6 am on

February 2, 2024

10. Contribution to the Night Peak in MW

February 1, 2024

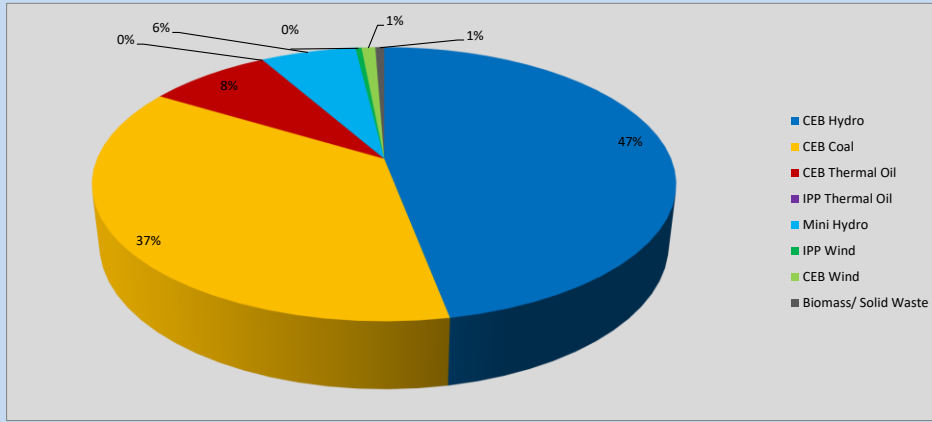


Table 06

CEB Hydro	1035	MW
CEB Coal	807	MW
CEB Thermal Oil	179	MW
IPP Thermal Oil	0	MW
Mini Hydro (Telemetered)	139	MW
IPP Wind	8.8	MW
CEB Wind	20.1	MW
Biomass/ Solid Waste	13	MW

Recorded Peak Demand Data

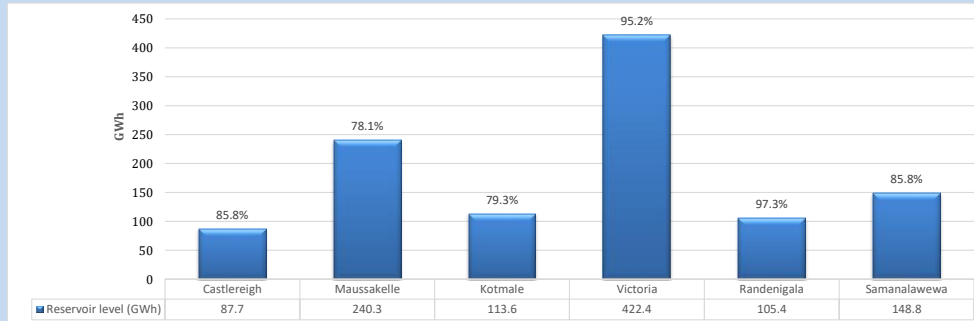
Table 07

Night Peak*	2,202	MW
Day Peak Maximum Demand	2,039	MW
Day Peak Minimum Demand	1,739	MW
Off Peak Minimum Demand	1,303	MW

Above figures are excluding contribution from roof top solar, non telemetered solar and mini hydro plants

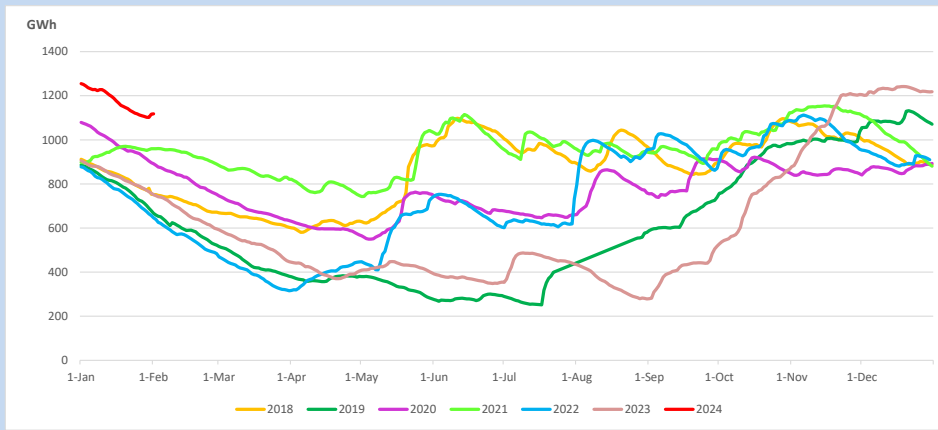
Reservoir Levels -

as at 06.00 Hr on February 2, 2024

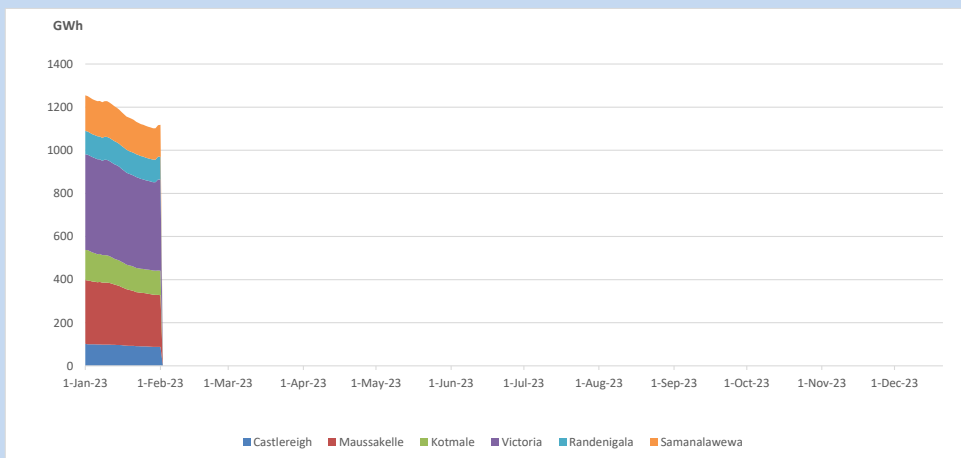


Total Reservoir Level 1118.2 GWh  
 % of Total capacity 87.5%

### 11. Comparison of Total Reservoir Storage Levels with Past Years

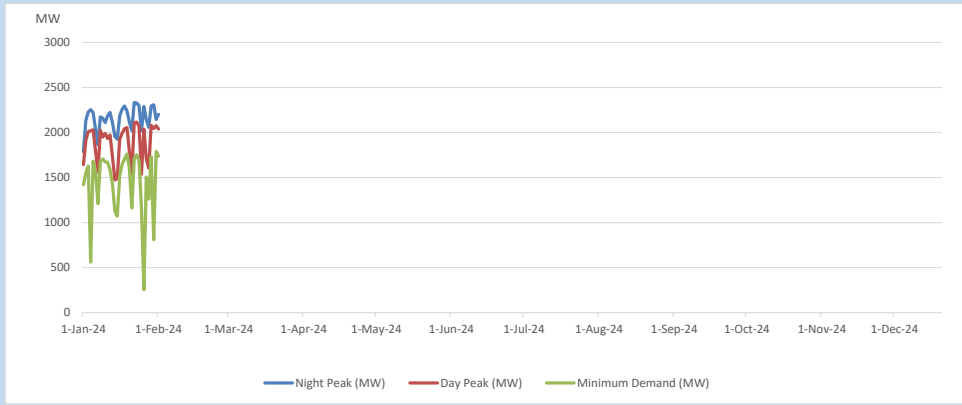


### 12. Variation of Major Hydro Reservoir Levels in the current year (GWh)





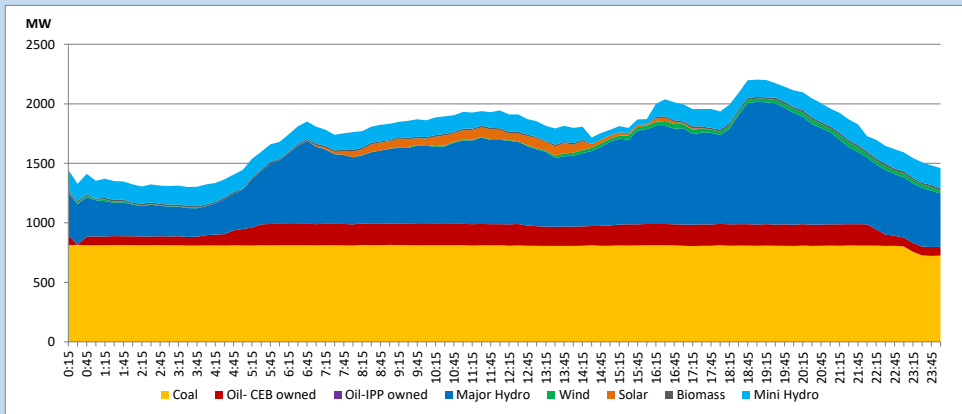
### 13. Variation of Demand during the current year



The above figures are excluding contribution from roof top solar, non telemetered solar and mini hydro plants

### 14. Daily Load Curve

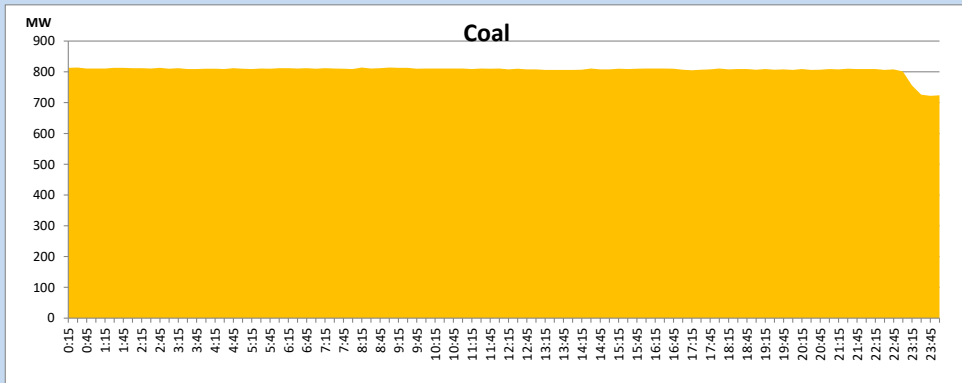
February 1, 2024



Solar and wind data is based on Telemetered Power Stations only

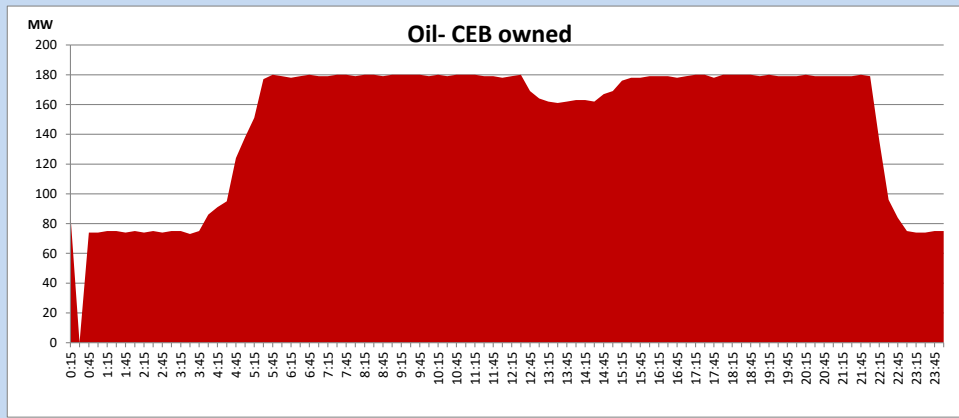
### Coal Generation during

February 1, 2024



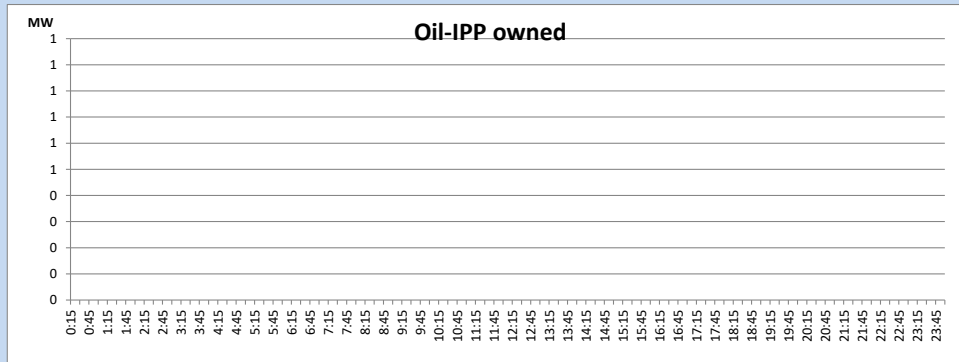
CEB Oil Plant Generation during

February 1, 2024



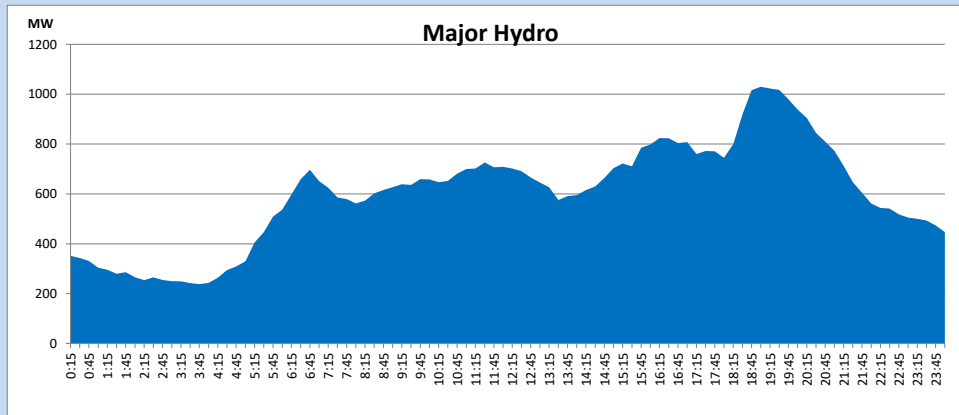
IPP Oil Plant Generation during

February 1, 2024



Major Hydro Generation during

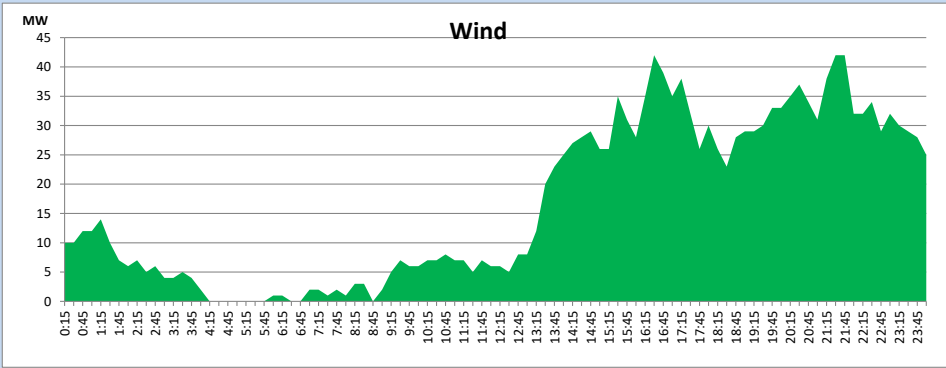
February 1, 2024



**Wind Generation during**

**February 1, 2024**

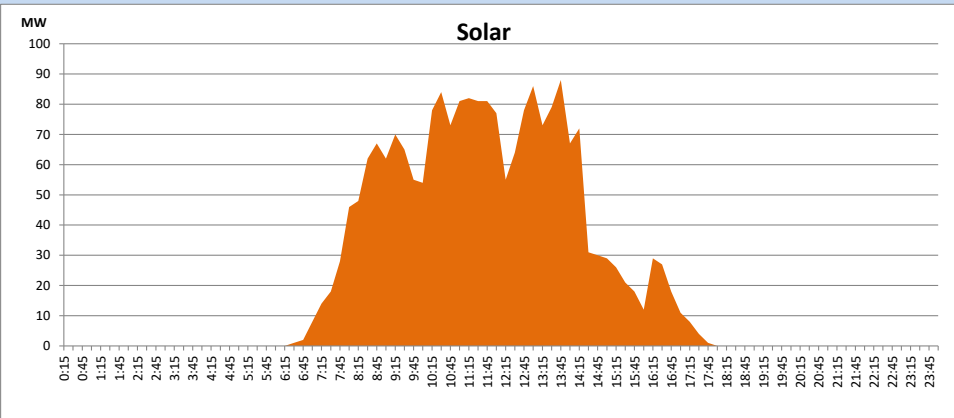
Based on Telemetered Power Stations only



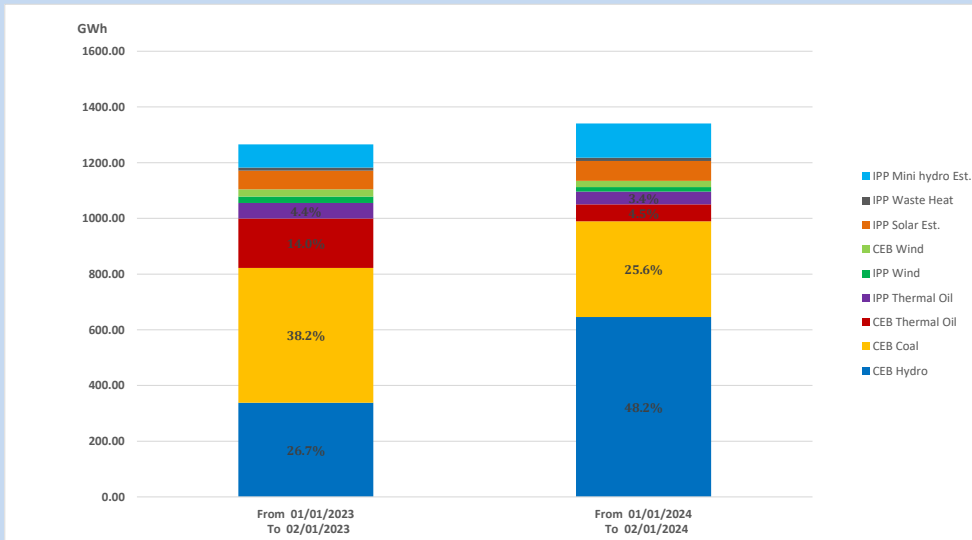
**Solar Generation during**

**February 1, 2024**

Based on Telemetered Power Stations only



**15. Cumulative Dispatch Comparison with Last Year**



Cumulative dispatch  
 From 01/01/2023 To 02/01/2023  
 From 01/01/2024 To 02/01/2024

1265 GWh  
 1341 GWh

The above figures are including contribution from roof top solar, non telemetered solar and mini hydro plants)

Thermal Plant Fuel types

Table 08

Power Station	Primary Fuel
CEB Thermal	
Sapugaskanda 1	Heavy Fuel
Sapugaskanda 2	Heavy Fuel
Kelanitissa Small Gas Turbines	Auto Diesel
GT 7 - Kelanitissa	Auto Diesel
Kelanitissa CCY	Naphtha or Diesel
Lakvijaya 1	Coal
Lakvijaya 2	Coal
Lakvijaya 3	Coal
Uthuru Janani	Heavy Fuel
Barge CEB	Heavy Fuel
KCCPS -2	Auto Diesel

Power Station	Primary Fuel
Private Thermal	
West Coast	Auto Diesel / Heavy Fuel
ACE Matara	Heavy Fuel
ACE Embilipitiya	Heavy Fuel

Major Incidents reported during the day

February 1, 2024

Nil