

Generation and Reservoirs Statistics

December 27, 2023



PUBLIC UTILITIES COMMISSION OF SRI LANKA

1. Daily Generation Mix in MWh

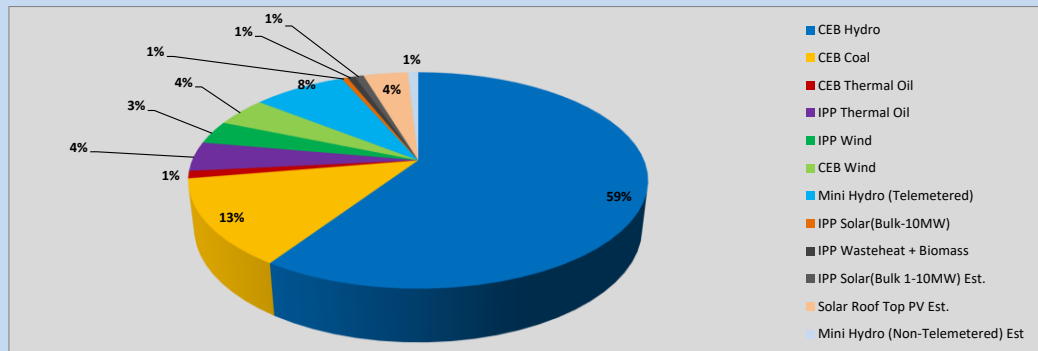


Table 01

	Generation (MWh)
CEB Hydro	24,372
CEB Coal	5,322
CEB Thermal Oil	451
IPP Thermal Oil	1,805
IPP Wind	1,430
CEB Wind	1,795
Mini Hydro (Telemetered)	3,211
IPP Solar (Bulk)	213
IPP Waste heat + Biomass	260
Total Generation (Excluding estimated figures)	38,859
* Estimated unserved energy	0
* Estimated Mini Hydro (Non telemetered)	359
* Estimated IPP Solar PV (Bulk 1-10MW)	304
* Estimated Solar Roof Top PV	1540
Total Generation (Including estimated figures)	41,062

* Estimated figures of CEB generation report

Table 02

	Installed Capacity (MW)
CEB Hydro	1409
CEB Coal	810
CEB Thermal Oil	781
IPP Thermal Oil (West Coast, ACE Matara and ACE Embilipitiya)	387
IPP Wind	148
CEB Wind	100
Mini Hydro	422
IPP Waste heat + Biomass	50
IPP Solar	136
Rooftop Solar (Ordinary)	277
Rooftop Solar (LT Bulk)	263
Rooftop Solar (HT Bulk)	70

Data Source - Monthly Review Report [Aug-2023]

2. Cumulative Dispatch

Following data excludes the contribution from roof top solar, non telemetered solar and mini hydro plants

Table 03 - Current Month

Category	Dispatch (GWh)	
CEB Hydro	658	62.67%
CEB Coal	136	12.95%
CEB Thermal Oil	20	1.88%
IPP Thermal	27	2.59%
SPP Wind	18	1.73%
CEB Wind	25	2.39%
Mini Hydro *	100	9.51%
IPP Solar *	56	5.31%
IPP Waste heat + BMP	10	0.97%
Total	1,050	

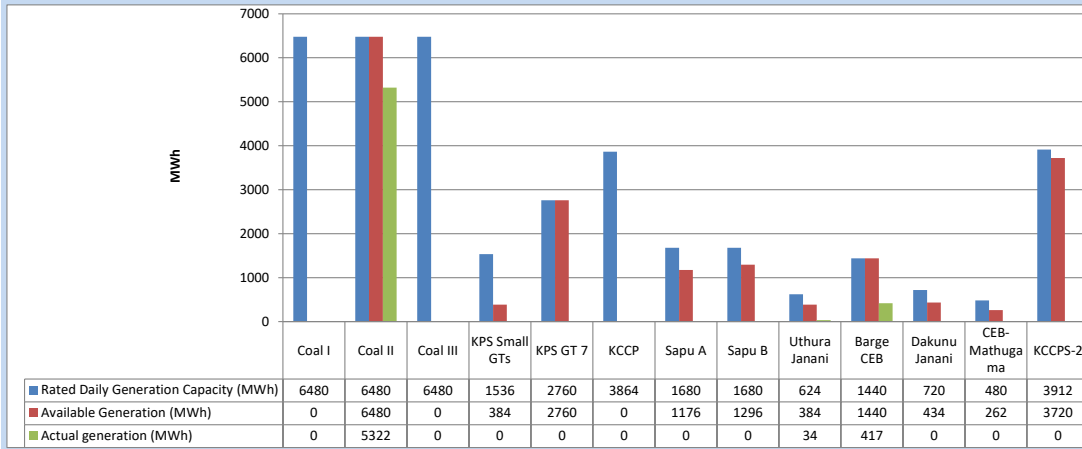
Table 04 - Current Year

Category	Dispatch (GWh)	
CEB Hydro	4,481	29.45%
CEB Coal	4,632	30.44%
CEB Thermal Oil	1,974	12.98%
IPP Thermal	1,154	7.58%
SPP Wind	386	2.54%
CEB Wind	387	2.54%
Mini Hydro *	1,189	7.81%
IPP Solar *	858	5.64%
IPP Waste heat	153	1.01%
Total	15,214	

*Including estimated contribution from non telemetered plants

3. CEB owned Thermal Plant Dispatch

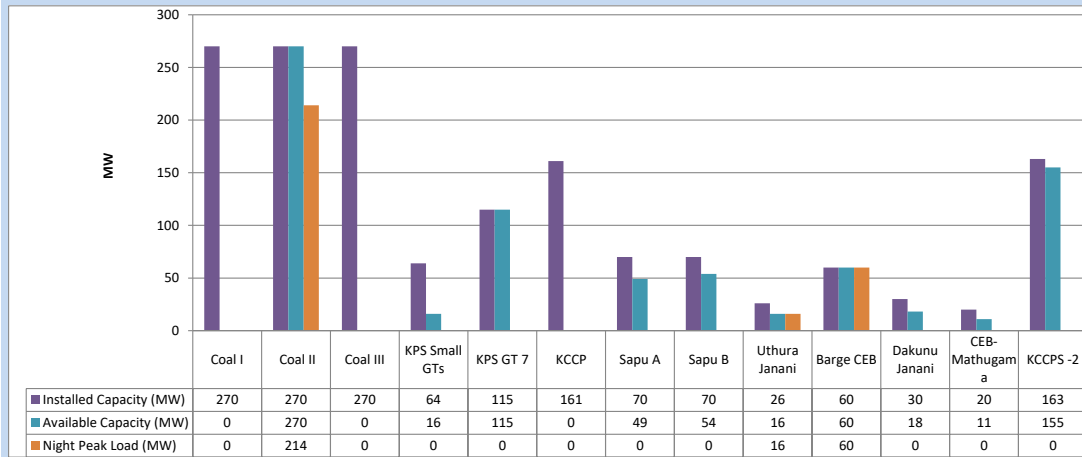
December 27, 2023



Available Generation is estimated based on plant availability at 6.00am on

December 28, 2023

4. CEB owned Thermal Plant Loading at the Night Peak

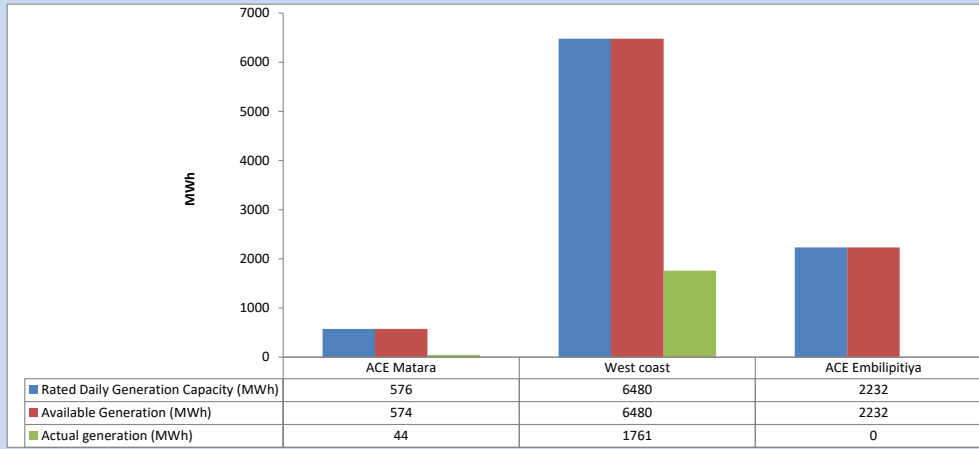


Plant availability is recorded at 6.00 am on

December 28, 2023

5. IPP owned Thermal Plant Dispatch

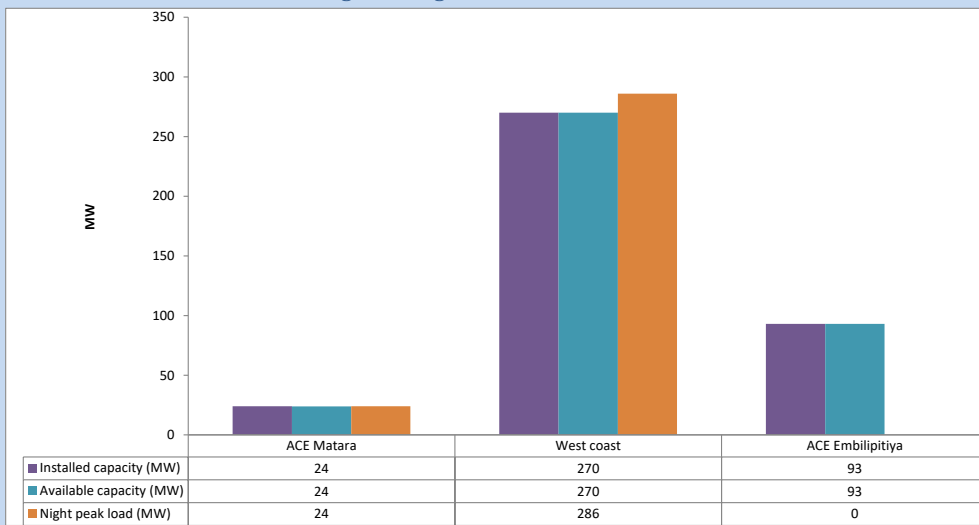
December 27, 2023



Available Generation is estimated based on plant availability at 6.00am on

December 28, 2023

6. IPP owned Thermal Plant Loading at the Night Peak

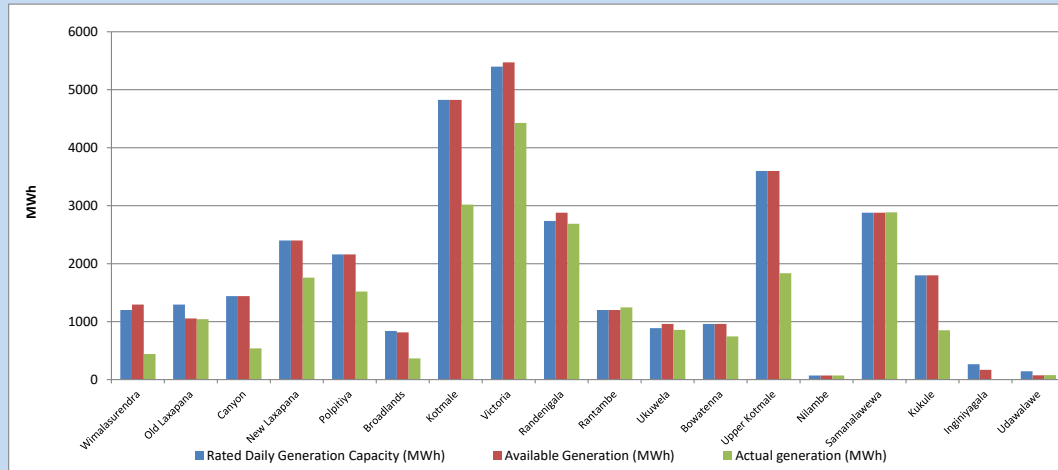


Plant availability is recorded at 6.00 am on

December 28, 2023

7. Major Hydro Plant Dispatch

December 27, 2023

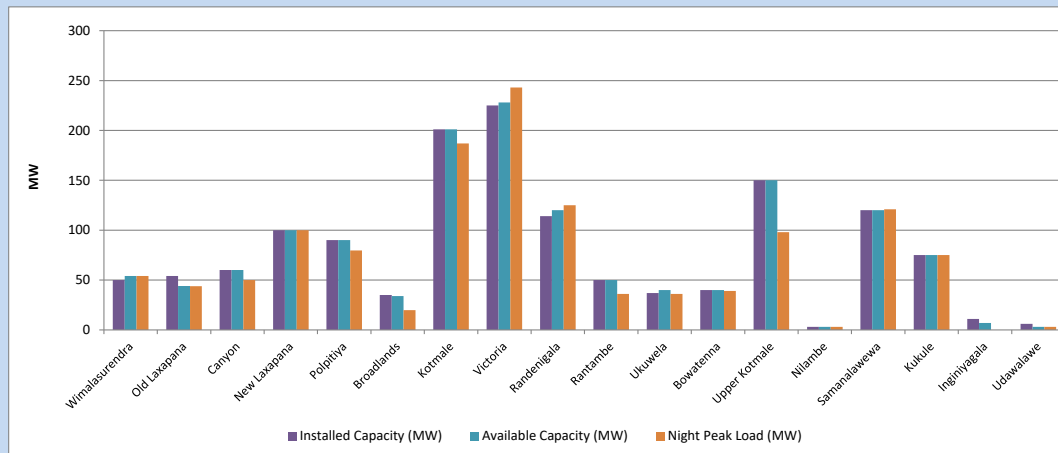


Available Generation is estimated based on plant availability at 6.00am on
Broadlands power plant is operating in the Commissioning Stage

December 28, 2023

8. Major Hydro Plant Loading at Night Peak

December 27, 2023



Plant availability is recorded at 6.00 am on
Broadlands power plant is operating in the Commissioning Stage

December 28, 2023

9. Summary of Major Plant performance

Table 05

Plant	Installed Capacity (MW)	Plant Availability (MW)	Night peak Load (MW)	Plant Dispatch (MWh)
Wimalasurendra	50	54	54	442
Old Laxapana	54	44	44	1,044
Canyon	60	60	50	539
New Laxapana	100	100	100	1,760
Polpitiya	90	90	80	1,520
Broadlands	35	34	20	366
Kotmale	201	201	187	3,020
Victoria	225	228	243	4,427
Randenigala	114	120	125	2,687
Rantambe	50	50	36	1,245
Ukuwela	37	40	36	857
Bowatenna	40	40	39	745
Upper Kotmale	150	150	98	1,836
Nilambe	3	3	3	70
Samanalawewa	120	120	121	2,885
Kukule	75	75	75	851
Inginiyagala	11	7	0	0
Udawalawe	6	3	3	78
Puttalam Coal I	270	0	0	0
Puttalam Coal II	270	270	214	5,322
Puttalam Coal III	270	0	0	0
KPS Small GTs	64	16	0	0
KPS GT 7	115	115	0	0
KCCP	161	0	0	0
Sapugaskanda A	70	49	0	0
Sapugaskanda B	70	54	0	0
Uthura Janani	26	16	16	34
Barge CEB	60	60	60	417
CEB-Hambantota	30	18	0	0
CEB-Mathugama	20	11	0	0
ACE Matara	24	24	24	44
Asia Power	50	0	0	0
KCCPS -2	163	155	0	0
West Coast	270	270	286	1,761
Nothern Power	36	0	0	0
ACE Embilipitiya	93	93	0	0
Total	3,483	2,570	2,157	39,218

Plant availability is the availability recorded at 6 am on

December 28, 2023

10. Contribution to the Night Peak in MW

December 27, 2023

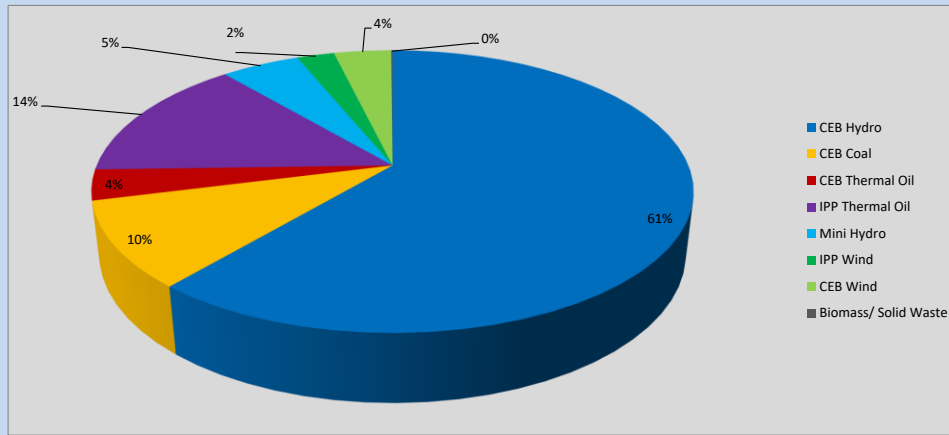


Table 06

CEB Hydro	1331	MW
CEB Coal	214	MW
CEB Thermal Oil	76	MW
IPP Thermal Oil	310	MW
Mini Hydro (Telemetered)	110	MW
IPP Wind	52.3	MW
CEB Wind	80	MW
Biomass/ Solid Waste	2	MW

Recorded Peak Demand Data

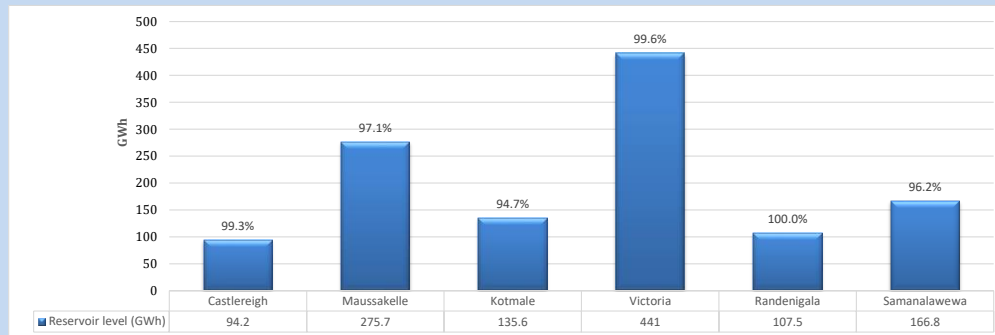
Table 07

Night Peak*	2,175	MW
Day Peak Maximum Demand	1,952	MW
Day Peak Minimum Demand	1,531	MW
Off Peak Minimum Demand	1,079	MW

Above figures are excluding contribution from roof top solar, non telemetered solar and mini hydro plants

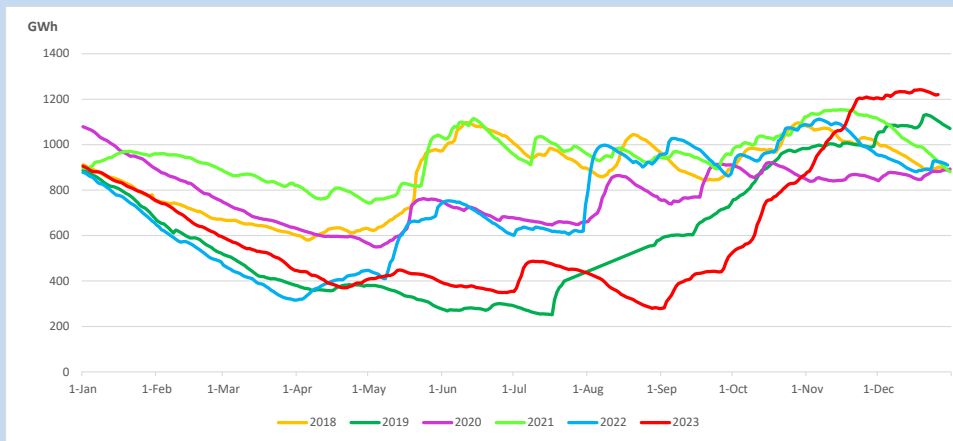
Reservoir Levels -

as at 06.00 Hr on December 28, 2023

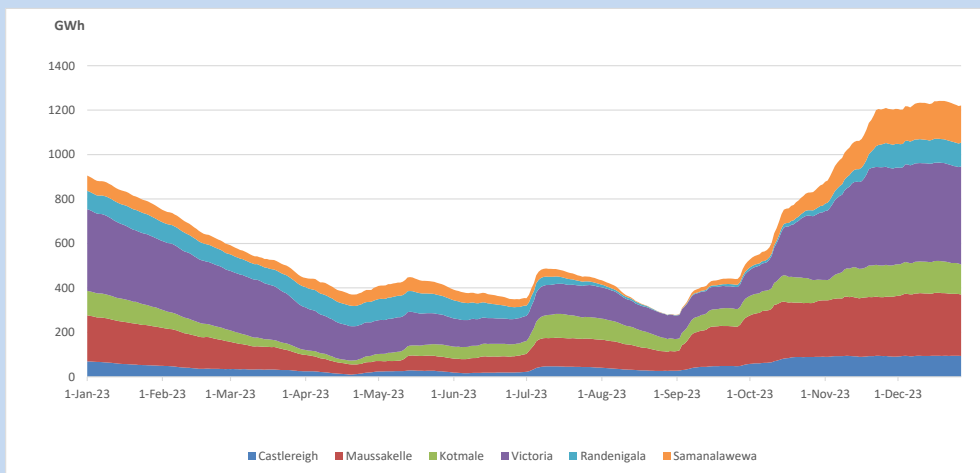


Total Reservoir Level 1220.8 GWh
% of Total capacity 98.0%

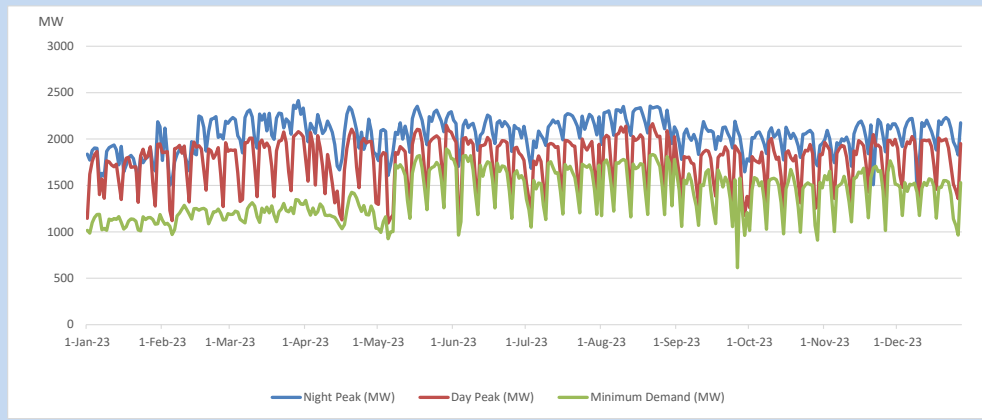
11. Comparison of Total Reservoir Storage Levels with Past Years



12. Variation of Major Hydro Reservoir Levels in the current year (GWh)



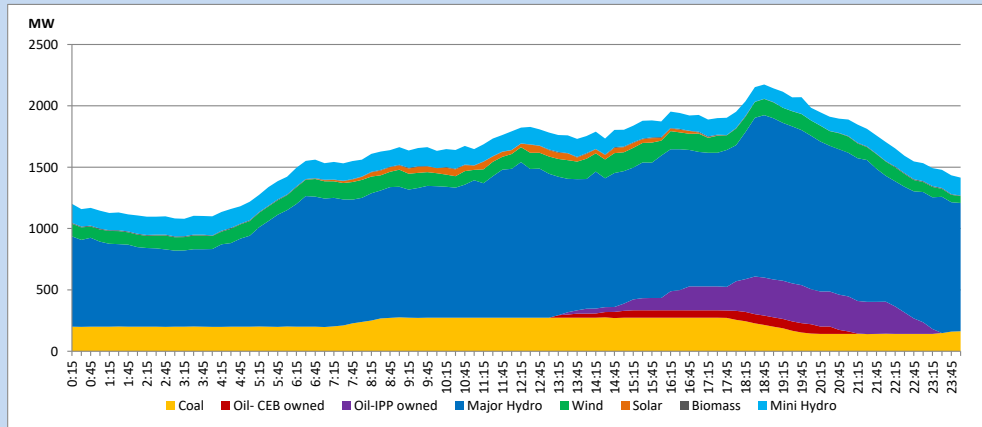
13. Variation of Demand during the current year



The above figures are excluding contribution from roof top solar, non telemetered solar and mini hydro plants

14. Daily Load Curve

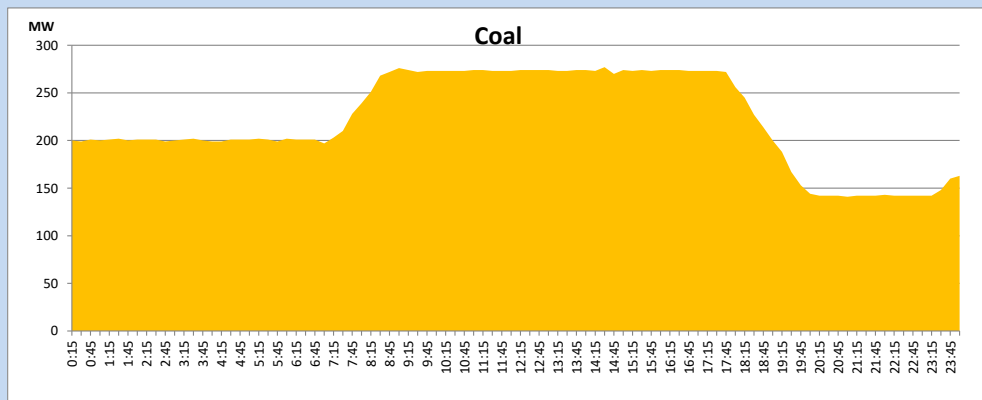
December 27, 2023



Solar and wind data is based on Telemetered Power Stations only

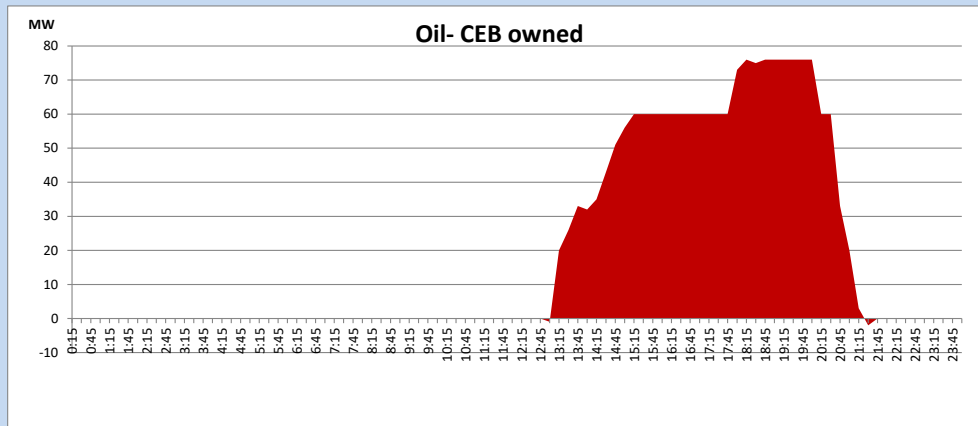
Coal Generation during

December 27, 2023



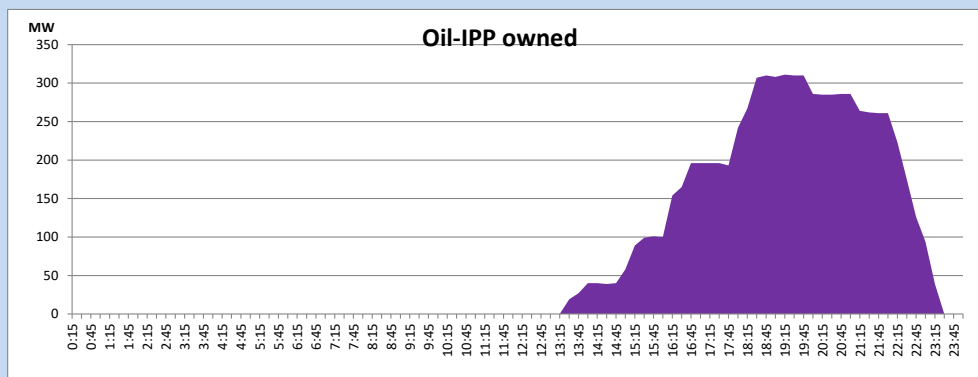
CEB Oil Plant Generation during

December 27, 2023



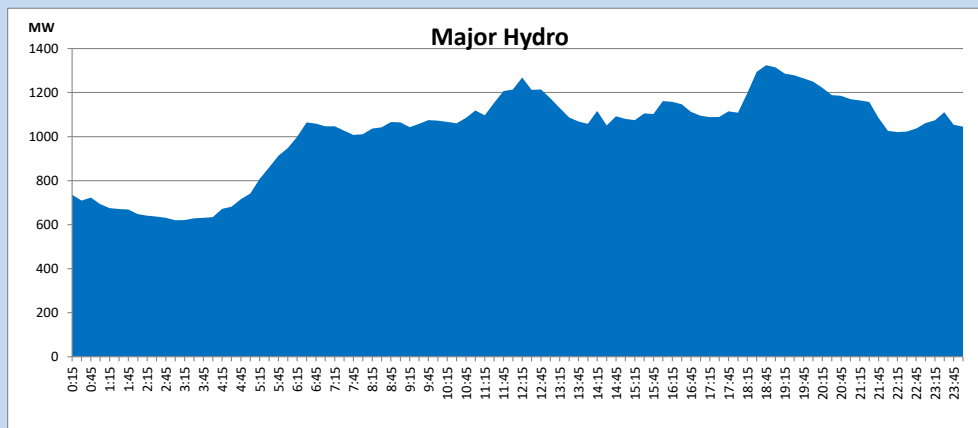
IPP Oil Plant Generation during

December 27, 2023



Major Hydro Generation during

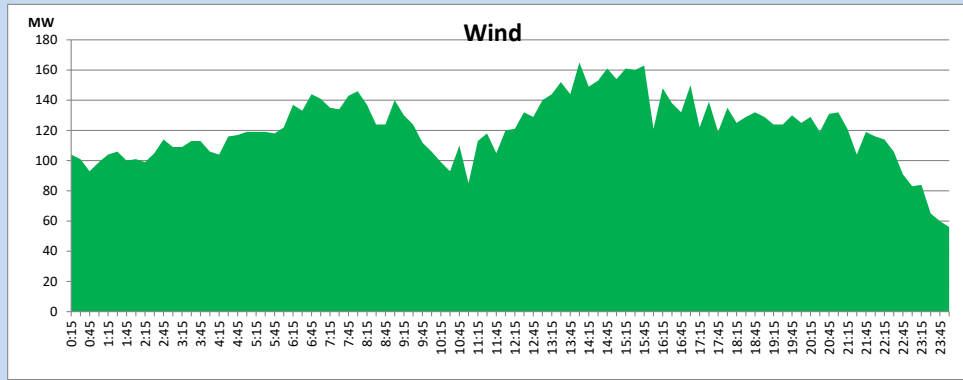
December 27, 2023



Wind Generation during

December 27, 2023

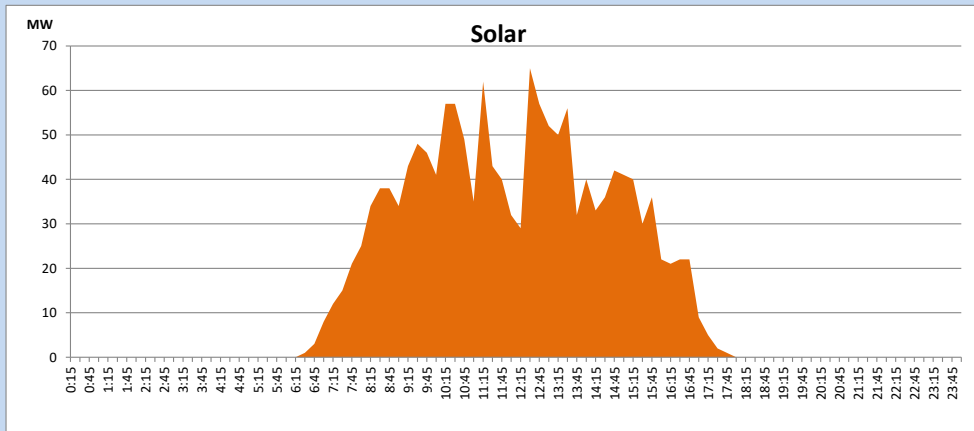
Based on Telemetered Power Stations only



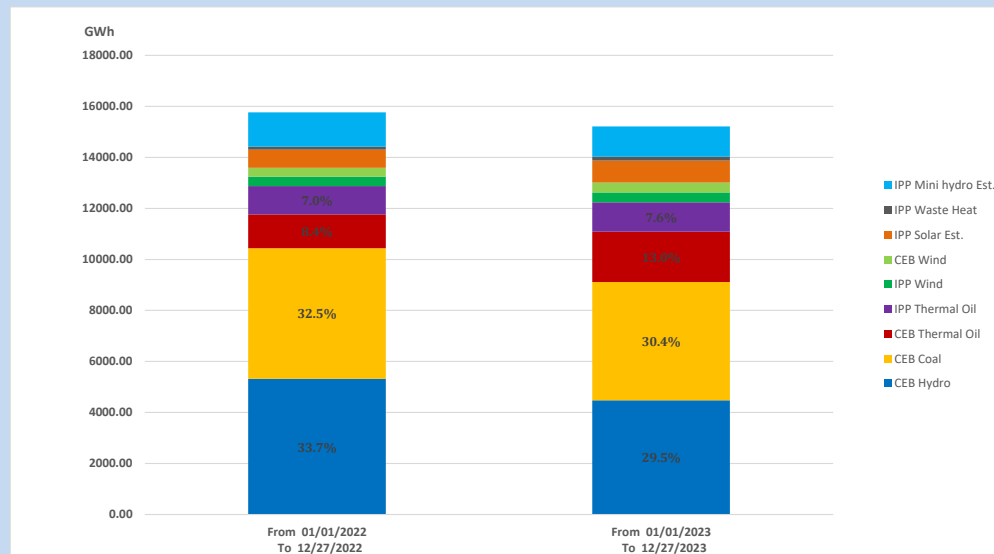
Solar Generation during

December 27, 2023

Based on Telemetered Power Stations only



15. Cumulative Dispatch Comparison with Last Year



Cumulative dispatch
From 01/01/2022 To 12/27/2022
From 01/01/2023 To 12/27/2023

15766 GWh
15214 GWh

The above figures are including contribution from roof top solar, non telemetered solar and mini hydro plants (figures have been adjusted based on the data from the CEB monthly review reports.)

Thermal Plant Fuel types

Table 08

Power Station	Primary Fuel
CEB Thermal	
Sapugaskanda 1	Heavy Fuel
Sapugaskanda 2	Heavy Fuel
Kelanitissa Small Gas Turbines	Auto Diesel
GT 7 - Kelanitissa	Auto Diesel
Kelanitissa CCY	Naphtha or Diesel
Lakvijaya 1	Coal
Lakvijaya 2	Coal
Lakvijaya 3	Coal
Uthuru Janani	Heavy Fuel
Barge CEB	Heavy Fuel
KCCPS -2	Auto Diesel

Power Station	Primary Fuel
Private Thermal	
West Coast	Auto Diesel / Heavy Fuel
ACE Matara	Heavy Fuel
ACE Embilipitiya	Heavy Fuel

Major Incidents reported during the day

December 27, 2023

- 1) . Randenigala reservoir spilled intermittently and spilling continues to the present hour.