

Generation and Reservoirs Statistics

January 22, 2024



PUBLIC UTILITIES COMMISSION OF SRI LANKA

1. Daily Generation Mix in MWh

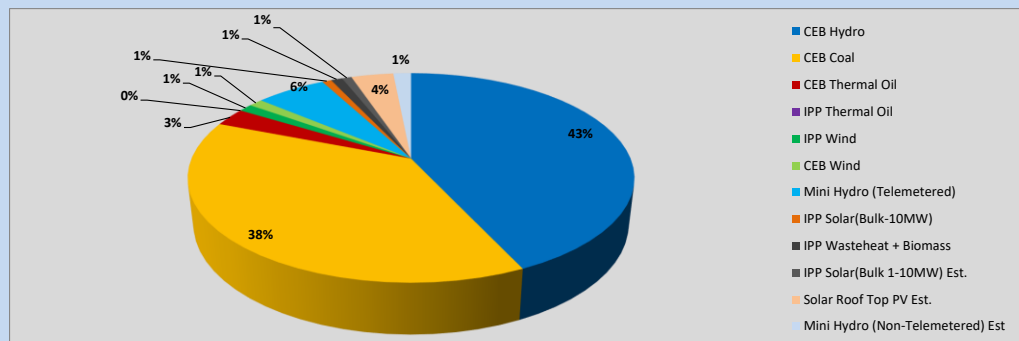


Table 01

	Generation (MWh)
CEB Hydro	19,433
CEB Coal	17,098
CEB Thermal Oil	1,263
IPP Thermal Oil	-
IPP Wind	540
CEB Wind	542
Mini Hydro (Telemetered)	2,743
IPP Solar (Bulk)	360
IPP Waste heat + Biomass	446
Total Generation (Excluding estimated figures)	42,425
* Estimated unserved energy	0
* Estimated Mini Hydro (Non telemetered)	693
* Estimated IPP Solar PV (Bulk 1-10MW)	374
* Estimated Solar Roof Top PV	1650
Total Generation (Including estimated figures)	45,142

* Estimated figures of CEB generation report

Table 02

	Installed Capacity (MW)
CEB Hydro	1409
CEB Coal	810
CEB Thermal Oil	781
IPP Thermal Oil (West Coast, ACE Matara and ACE Embilipitiya)	387
IPP Wind	148
CEB Wind	100
Mini Hydro	422
IPP Waste heat + Biomass	50
IPP Solar	136
Rooftop Solar (Ordinary)	277
Rooftop Solar (LT Bulk)	263
Rooftop Solar (HT Bulk)	70

Data Source - Monthly Review Report [Aug-2023]

2. Cumulative Dispatch

Following data excludes the contribution from roof top solar, non telemetered solar and mini hydro plants

Table 03 - Current Month

Category	Dispatch (GWh)	
CEB Hydro	515	56.50%
CEB Coal	153	16.77%
CEB Thermal Oil	27	2.96%
IPP Thermal	42	4.66%
SPP Wind	11	1.23%
CEB Wind	15	1.62%
Mini Hydro *	92	10.10%
IPP Solar *	49	5.33%
IPP Waste heat + BMP	8	0.83%
Total	912	

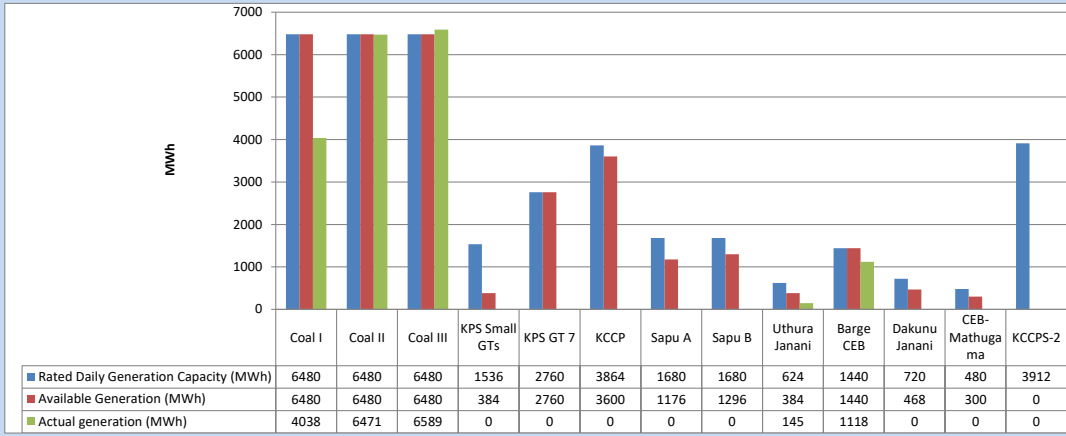
Table 04 - Current Year

Category	Dispatch (GWh)	
CEB Hydro	515	56.50%
CEB Coal	153	16.77%
CEB Thermal Oil	27	2.96%
IPP Thermal	42	4.66%
SPP Wind	11	1.23%
CEB Wind	15	1.62%
Mini Hydro *	92	10.10%
IPP Solar *	49	5.33%
IPP Waste heat	8	0.83%
Total	912	

*Including estimated contribution from non telemetered plants

3. CEB owned Thermal Plant Dispatch

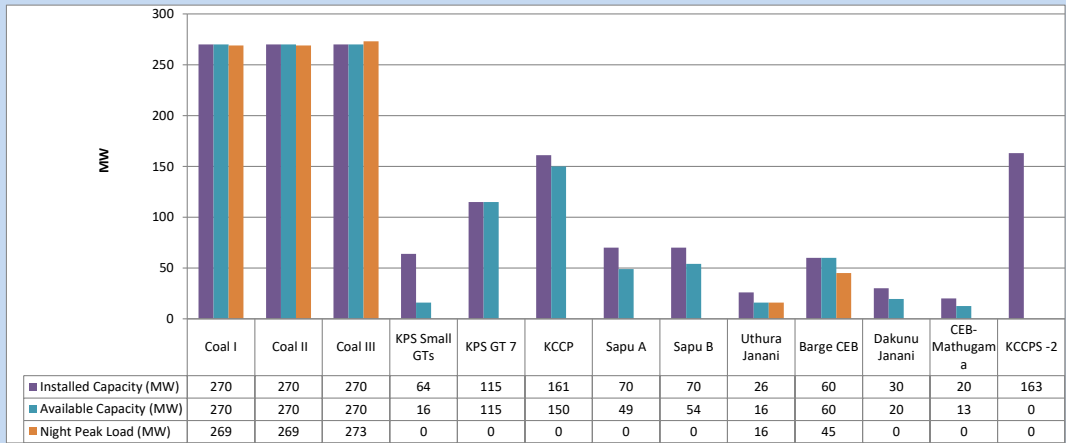
January 22, 2024



Available Generation is estimated based on plant availability at 6.00am on

January 23, 2024

4. CEB owned Thermal Plant Loading at the Night Peak

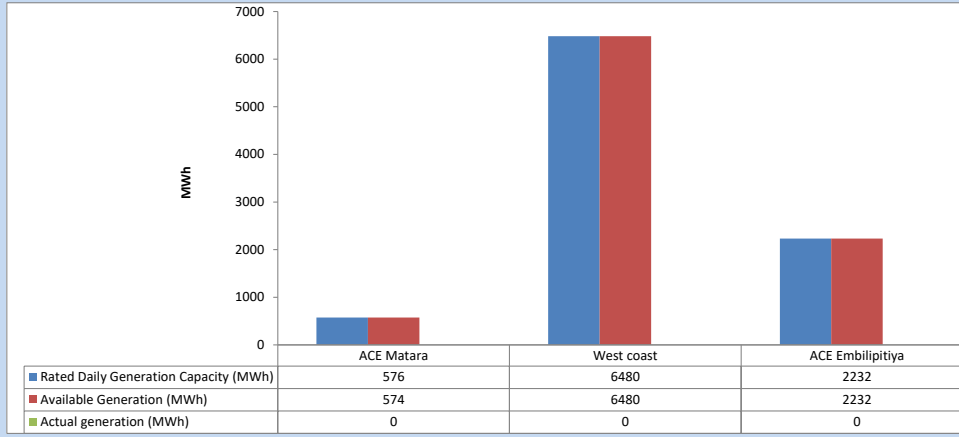


Plant availability is recorded at 6.00 am on

January 23, 2024

5. IPP owned Thermal Plant Dispatch

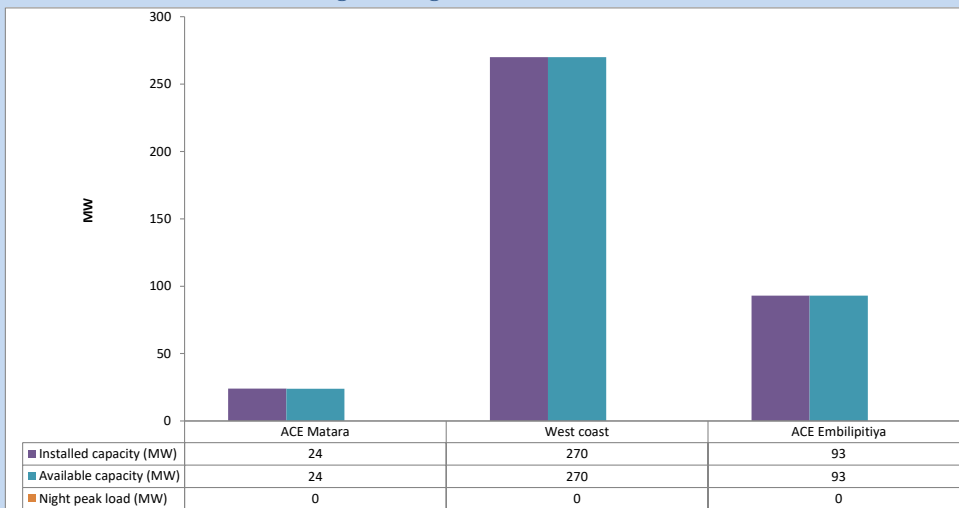
January 22, 2024



Available Generation is estimated based on plant availability at 6.00am on

January 23, 2024

6. IPP owned Thermal Plant Loading at the Night Peak

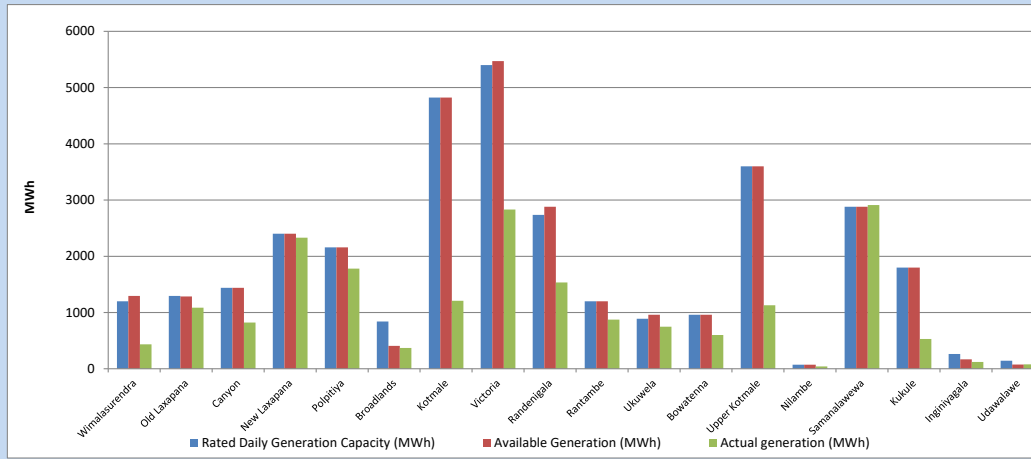


Plant availability is recorded at 6.00 am on

January 23, 2024

7. Major Hydro Plant Dispatch

January 22, 2024

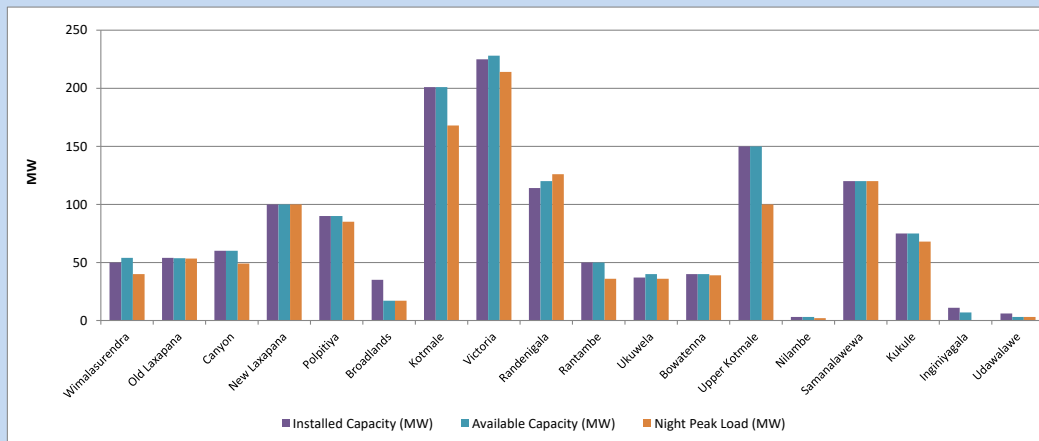


Available Generation is estimated based on plant availability at 6.00am on
Broadlands power plant is operating in the Commissioning Stage

January 23, 2024

8. Major Hydro Plant Loading at Night Peak

January 22, 2024



Plant availability is recorded at 6.00 am on
Broadlands power plant is operating in the Commissioning Stage

January 23, 2024

9. Summary of Major Plant performance

Table 05

Plant	Installed Capacity	Plant Availability	Night peak Load	Plant Dispatch
	(MW)	(MW)	(MW)	(MWh)
Wimalasurendra	50	54	40	436
Old Laxapana	54	54	53	1,085
Canyon	60	60	49	822
New Laxapana	100	100	100	2,332
Polpitiya	90	90	85	1,780
Broadlands	35	17	17	369
Kotmale	201	201	168	1,210
Victoria	225	228	214	2,832
Randenigala	114	120	126	1,535
Rantambe	50	50	36	874
Ukuwela	37	40	36	749
Bowatenna	40	40	39	601
Upper Kotmale	150	150	100	1,130
Nilambe	3	3	2	40
Samanalawewa	120	120	120	2,912
Kukule	75	75	68	529
Inginiyagala	11	7	0	120
Udawalawe	6	3	3	77
Puttalam Coal I	270	270	269	4,038
Puttalam Coal II	270	270	269	6,471
Puttalam Coal III	270	270	273	6,589
KPS Small GTs	64	16	0	0
KPS GT 7	115	115	0	0
KCCP	161	150	0	0
Sapugaskanda A	70	49	0	0
Sapugaskanda B	70	54	0	0
Uthura Janani	26	16	16	145
Barge CEB	60	60	45	1,118
CEB-Hambantota	30	20	0	0
CEB-Mathugama	20	13	0	0
ACE Matara	24	24	0	0
Asia Power	50	0	0	0
KCCPS -2	163	0	0	0
West Coast	270	270	0	0
Nothern Power	36	0	0	0
ACE Embilipitiya	93	93	0	0
Total	3,483	3,101	2,319	42,425

Plant availability is the availability recorded at 6 am on

January 23, 2024

10. Contribution to the Night Peak in MW

January 22, 2024

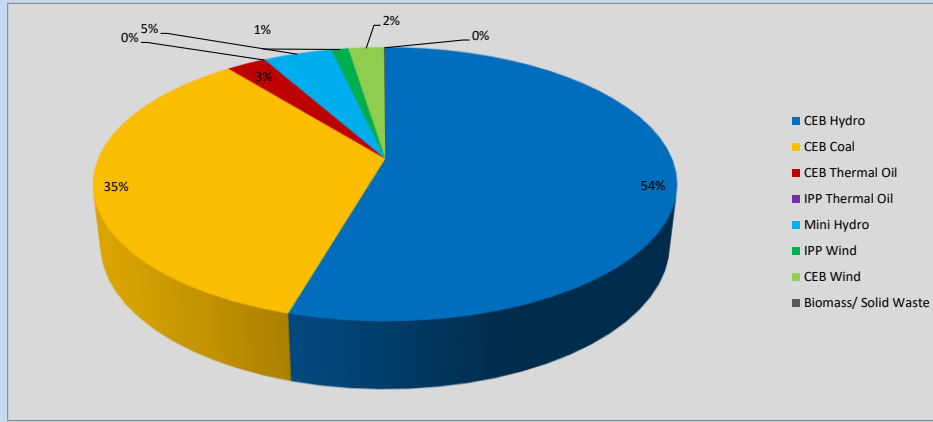


Table 06

CEB Hydro	1271	MW
CEB Coal	811	MW
CEB Thermal Oil	61	MW
IPP Thermal Oil	0	MW
Mini Hydro (Telemetered)	107	MW
IPP Wind	26.5	MW
CEB Wind	54.9	MW
Biomass/ Solid Waste	2	MW

Recorded Peak Demand Data

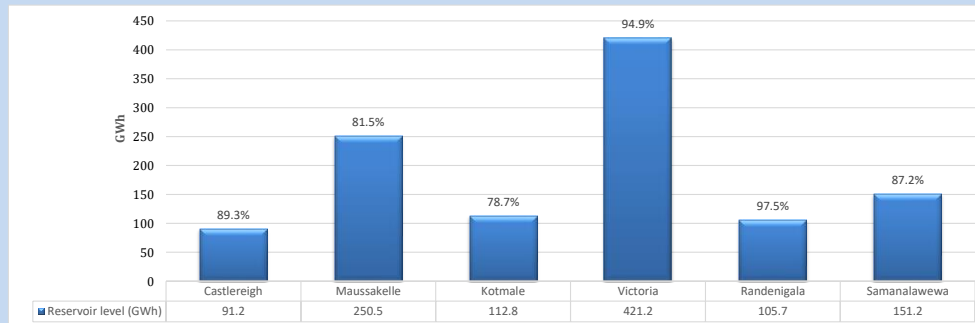
Table 07

Night Peak*	2,333	MW
Day Peak Maximum Demand	2,109	MW
Day Peak Minimum Demand	1,707	MW
Off Peak Minimum Demand	1,202	MW

Above figures are excluding contribution from roof top solar, non telemetered solar and mini hydro plants

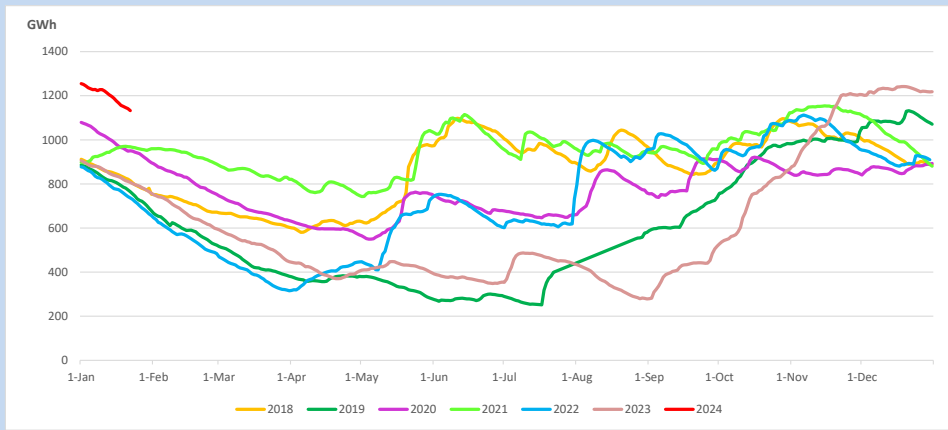
Reservoir Levels -

as at 06.00 Hr on January 23, 2024

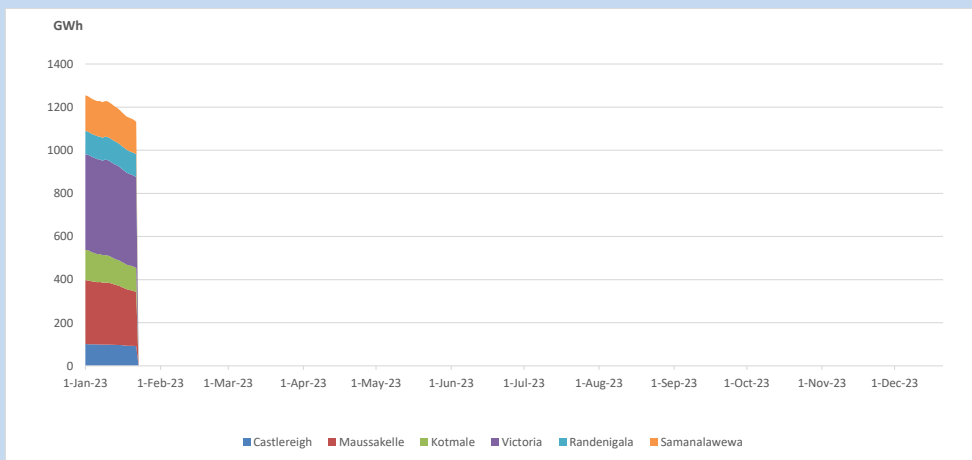


Total Reservoir Level 1132.6 GWh
% of Total capacity 88.6%

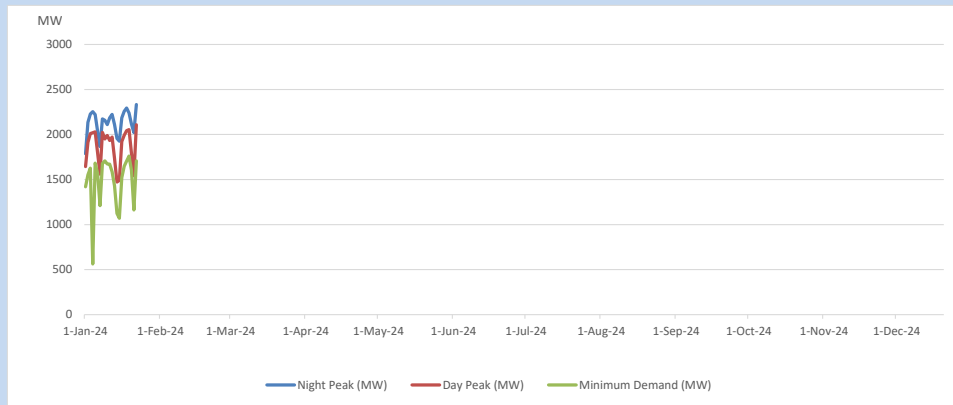
11. Comparison of Total Reservoir Storage Levels with Past Years



12. Variation of Major Hydro Reservoir Levels in the current year (GWh)



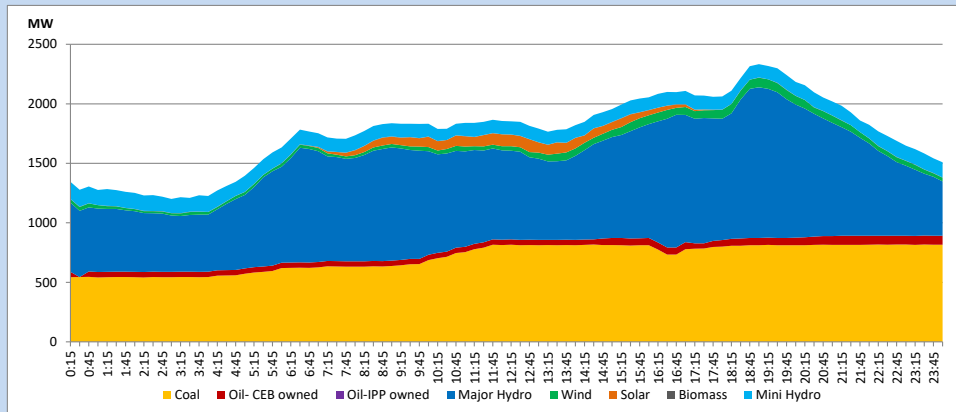
13. Variation of Demand during the current year



The above figures are excluding contribution from roof top solar, non telemetered solar and mini hydro plants

14. Daily Load Curve

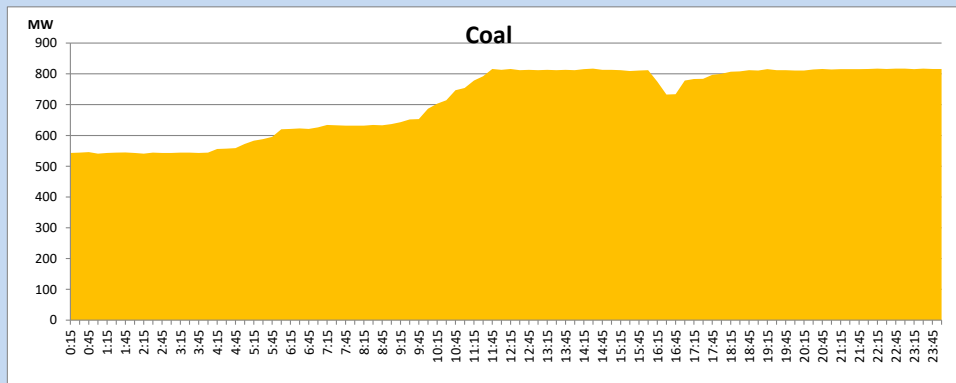
January 22, 2024



Solar and wind data is based on Telemetered Power Stations only

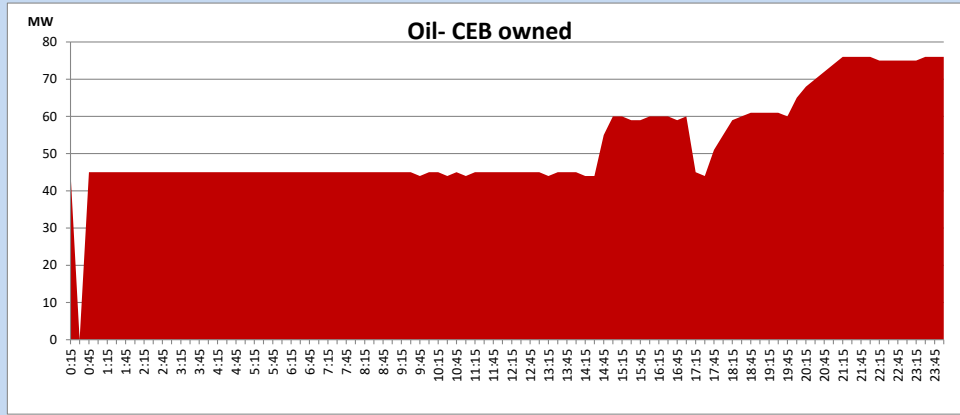
Coal Generation during

January 22, 2024



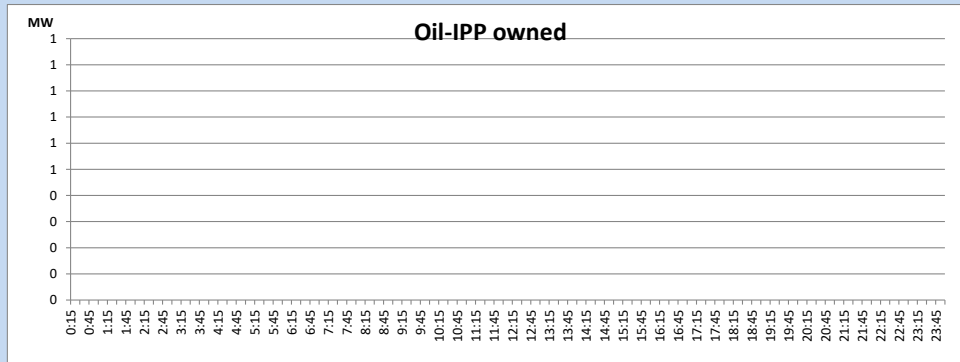
CEB Oil Plant Generation during

January 22, 2024



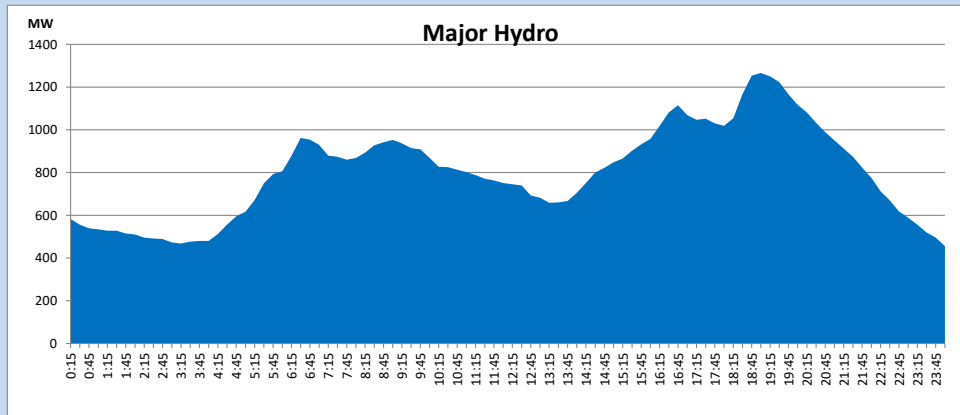
IPP Oil Plant Generation during

January 22, 2024



Major Hydro Generation during

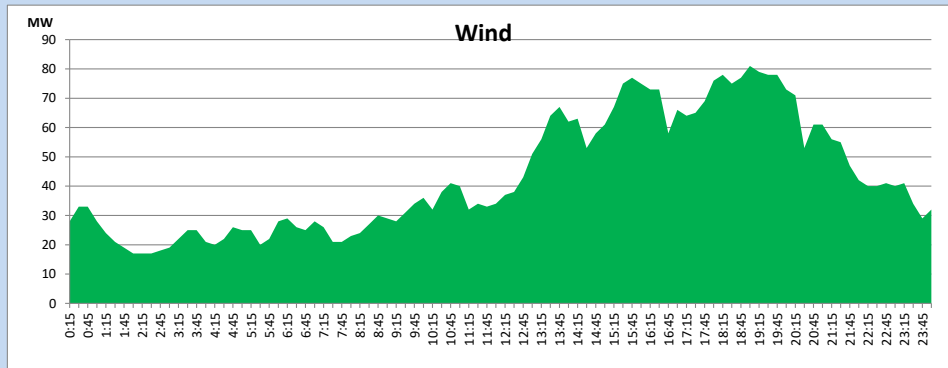
January 22, 2024



Wind Generation during

January 22, 2024

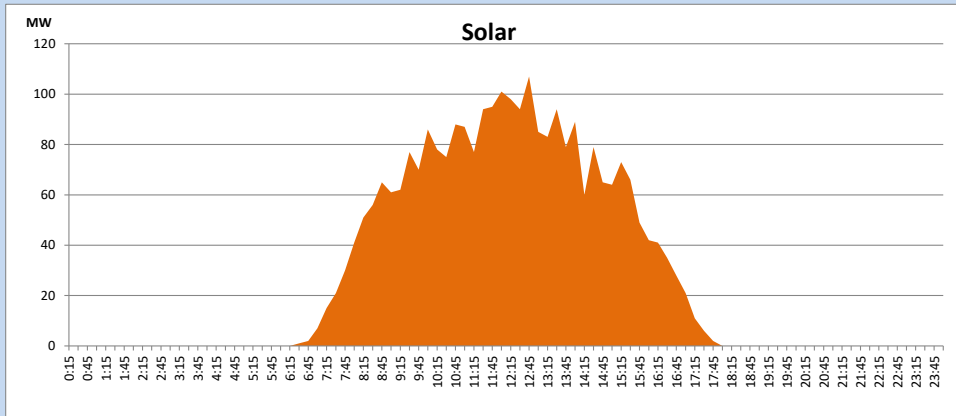
Based on Telemetered Power Stations only



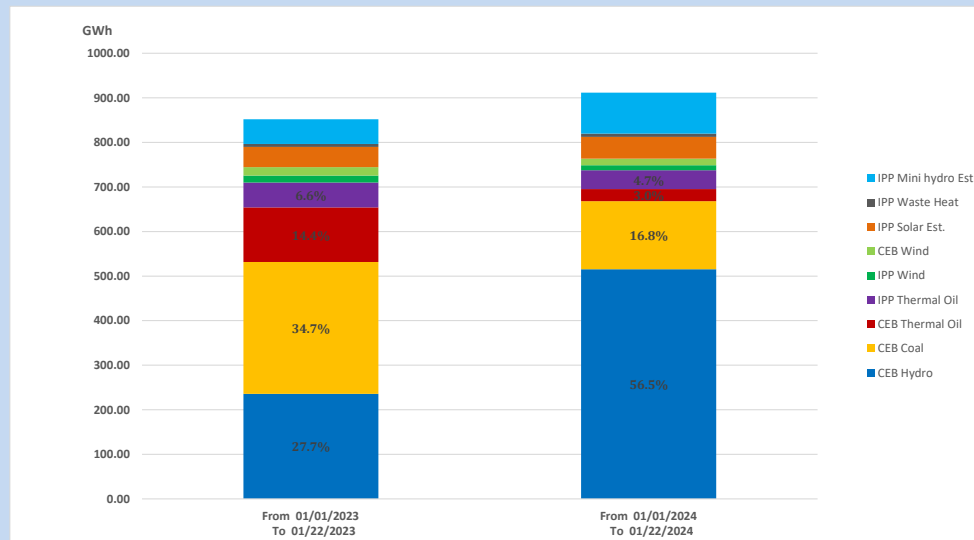
Solar Generation during

January 22, 2024

Based on Telemetered Power Stations only



15. Cumulative Dispatch Comparison with Last Year



Cumulative dispatch
From 01/01/2023 To 01/22/2023
From 01/01/2024 To 01/22/2024

852 GWh
912 GWh

The above figures are including contribution from roof top solar, non telemetered solar and mini hydro plants)

Thermal Plant Fuel types

Table 08

Power Station	Primary Fuel
CEB Thermal	
Sapugaskanda 1	Heavy Fuel
Sapugaskanda 2	Heavy Fuel
Kelanitissa Small Gas Turbines	Auto Diesel
GT 7 - Kelanitissa	Auto Diesel
Kelanitissa CCY	Naphtha or Diesel
Lakvijaya 1	Coal
Lakvijaya 2	Coal
Lakvijaya 3	Coal
Uthuru Janani	Heavy Fuel
Barge CEB	Heavy Fuel
KCCPS -2	Auto Diesel

Power Station	Primary Fuel
Private Thermal	
West Coast	Auto Diesel / Heavy Fuel
ACE Matara	Heavy Fuel
ACE Embilipitiya	Heavy Fuel

Major Incidents reported during the day

January 22, 2024

- 1) LVPS unit 01 synchronized at 04:08hrs and reached full load by 12:00hrs