

Generation and Reservoirs Statistics

January 21, 2024



PUBLIC UTILITIES COMMISSION OF SRI LANKA

1. Daily Generation Mix in MWh

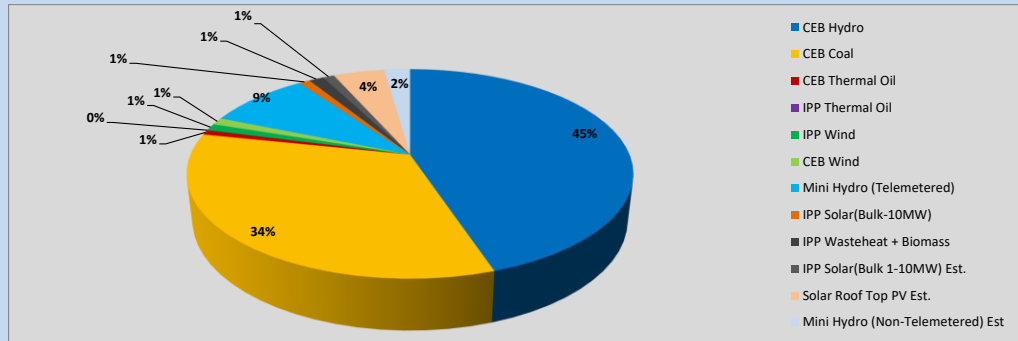


Table 01

	Generation (MWh)
CEB Hydro	16,742
CEB Coal	12,471
CEB Thermal Oil	285
IPP Thermal Oil	-
IPP Wind	401
CEB Wind	415
Mini Hydro (Telemetered)	3,314
IPP Solar (Bulk)	353
IPP Waste heat + Biomass	474
Total Generation (Excluding estimated figures)	34,455
* Estimated unserved energy	0
* Estimated Mini Hydro (Non telemetered)	837
* Estimated IPP Solar PV (Bulk 1-10MW)	366
* Estimated Solar Roof Top PV	1650
Total Generation (Including estimated figures)	37,308

* Estimated figures of CEB generation report

Table 02

	Installed Capacity (MW)
CEB Hydro	1409
CEB Coal	810
CEB Thermal Oil	781
IPP Thermal Oil (West Coast, ACE Matara and ACE Embilipitiya)	387
IPP Wind	148
CEB Wind	100
Mini Hydro	422
IPP Waste heat + Biomass	50
IPP Solar	136
Rooftop Solar (Ordinary)	277
Rooftop Solar (LT Bulk)	263
Rooftop Solar (HT Bulk)	70

Data Source - Monthly Review Report [Aug-2023]

2. Cumulative Dispatch

Following data excludes the contribution from roof top solar, non telemetered solar and mini hydro plants

Table 03 - Current Month

Category	Dispatch (GWh)	
CEB Hydro	496	57.20%
CEB Coal	136	15.67%
CEB Thermal Oil	26	2.97%
IPP Thermal	42	4.90%
SPP Wind	11	1.23%
CEB Wind	14	1.65%
Mini Hydro *	89	10.23%
IPP Solar *	46	5.34%
IPP Waste heat + BMP	7	0.82%
Total	867	

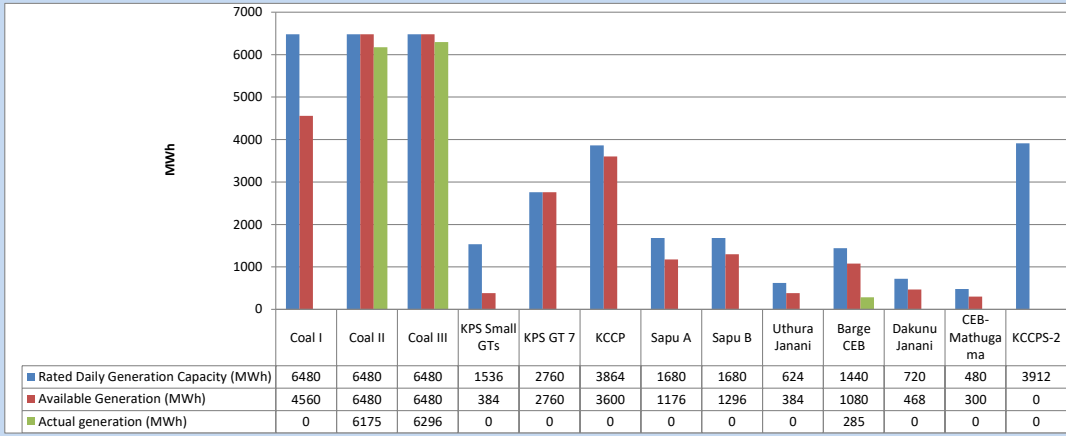
Table 04 - Current Year

Category	Dispatch (GWh)	
CEB Hydro	496	57.20%
CEB Coal	136	15.67%
CEB Thermal Oil	26	2.97%
IPP Thermal	42	4.90%
SPP Wind	11	1.23%
CEB Wind	14	1.65%
Mini Hydro *	89	10.23%
IPP Solar *	46	5.34%
IPP Waste heat	7	0.82%
Total	867	

*Including estimated contribution from non telemetered plants

3. CEB owned Thermal Plant Dispatch

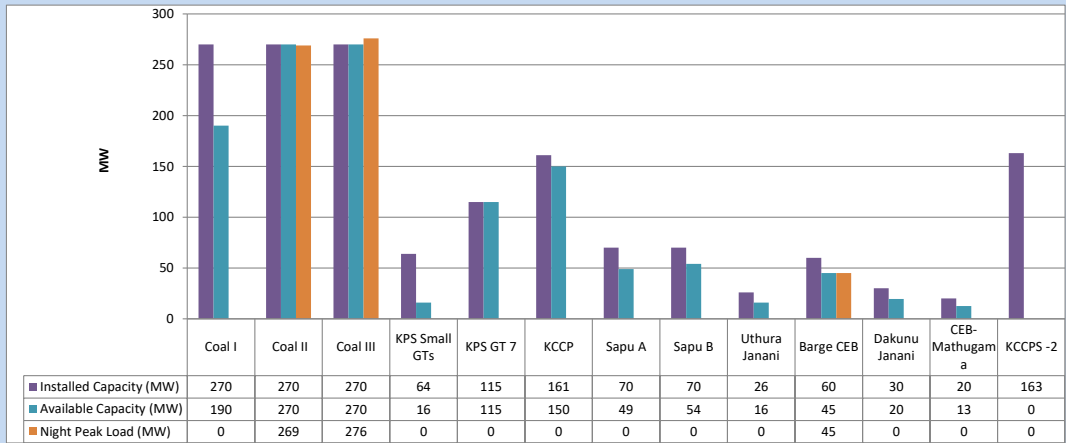
January 21, 2024



Available Generation is estimated based on plant availability at 6.00am on

January 22, 2024

4. CEB owned Thermal Plant Loading at the Night Peak

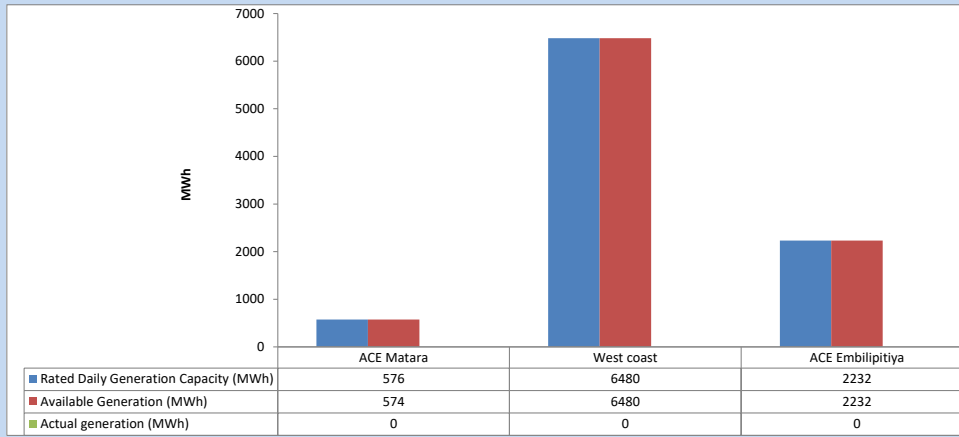


Plant availability is recorded at 6.00 am on

January 22, 2024

5. IPP owned Thermal Plant Dispatch

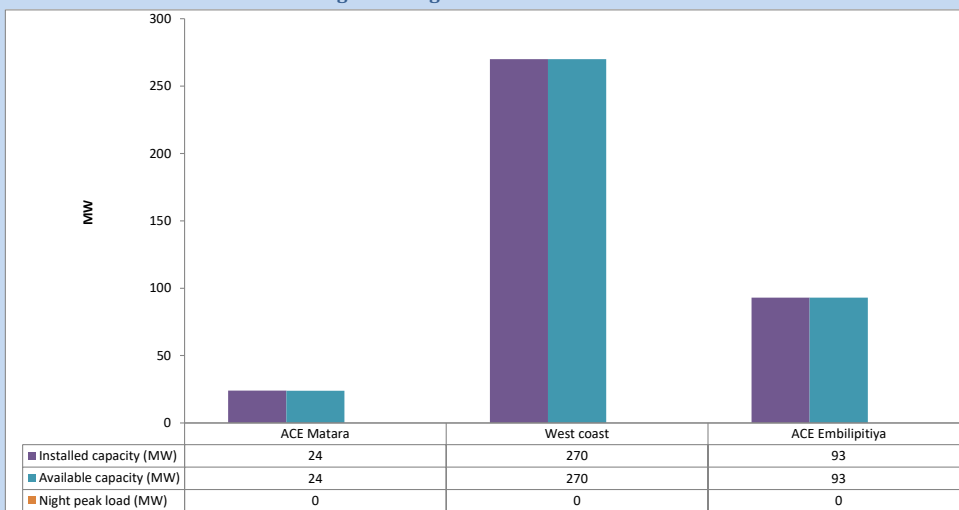
January 21, 2024



Available Generation is estimated based on plant availability at 6.00am on

January 22, 2024

6. IPP owned Thermal Plant Loading at the Night Peak

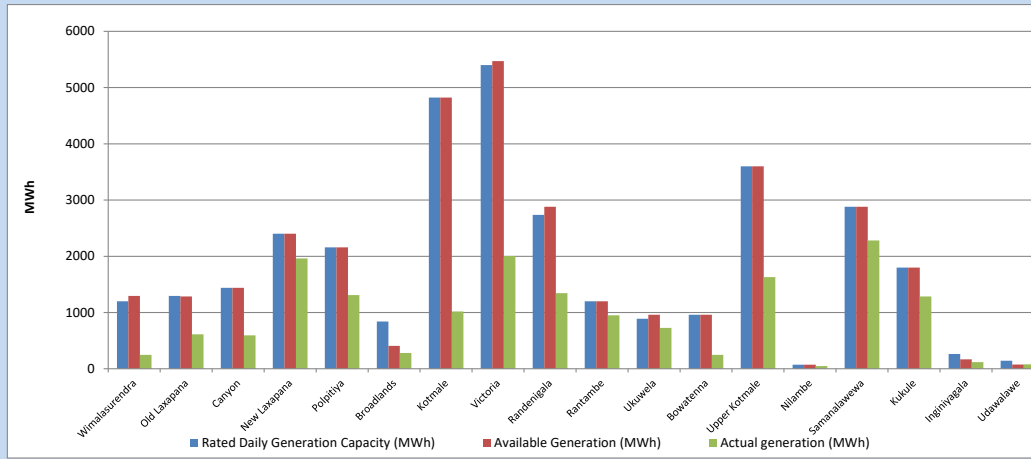


Plant availability is recorded at 6.00 am on

January 22, 2024

7. Major Hydro Plant Dispatch

January 21, 2024

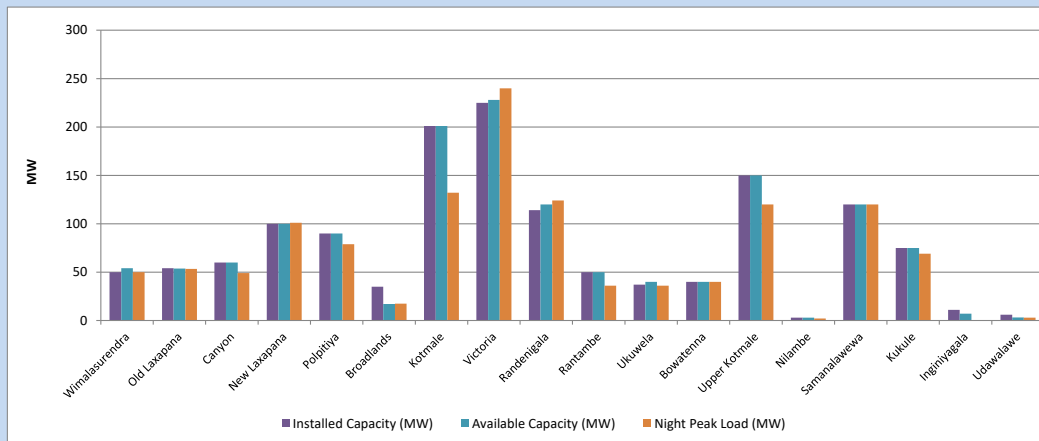


Available Generation is estimated based on plant availability at 6.00am on
Broadlands power plant is operating in the Commissioning Stage

January 22, 2024

8. Major Hydro Plant Loading at Night Peak

January 21, 2024



Plant availability is recorded at 6.00 am on
Broadlands power plant is operating in the Commissioning Stage

January 22, 2024

9. Summary of Major Plant performance

Table 05

Plant	Installed Capacity	Plant Availability	Night peak Load	Plant Dispatch
	(MW)	(MW)	(MW)	(MWh)
Wimalasurendra	50	54	50	247
Old Laxapana	54	54	53	612
Canyon	60	60	49	594
New Laxapana	100	100	101	1,961
Polpitiya	90	90	79	1,310
Broadlands	35	17	18	281
Kotmale	201	201	132	1,020
Victoria	225	228	240	2,006
Randenigala	114	120	124	1,344
Rantambe	50	50	36	952
Ukuwela	37	40	36	728
Bowatenna	40	40	40	246
Upper Kotmale	150	150	120	1,630
Nilambe	3	3	2	47
Samanalawewa	120	120	120	2,281
Kukule	75	75	69	1,287
Inginiyagala	11	7	0	118
Udawalawe	6	3	3	78
Puttalam Coal I	270	190	0	0
Puttalam Coal II	270	270	269	6,175
Puttalam Coal III	270	270	276	6,296
KPS Small GTs	64	16	0	0
KPS GT 7	115	115	0	0
KCCP	161	150	0	0
Sapugaskanda A	70	49	0	0
Sapugaskanda B	70	54	0	0
Uthura Janani	26	16	0	0
Barge CEB	60	45	45	285
CEB-Hambantota	30	20	0	0
CEB-Mathugama	20	13	0	0
ACE Matara	24	24	0	0
Asia Power	50	0	0	0
KCCPS -2	163	0	0	0
West Coast	270	270	0	0
Nothern Power	36	0	0	0
ACE Embilipitiya	93	93	0	0
Total	3,483	3,006	2,034	34,455

Plant availability is the availability recorded at 6 am on

January 22, 2024

10. Contribution to the Night Peak in MW

January 21, 2024

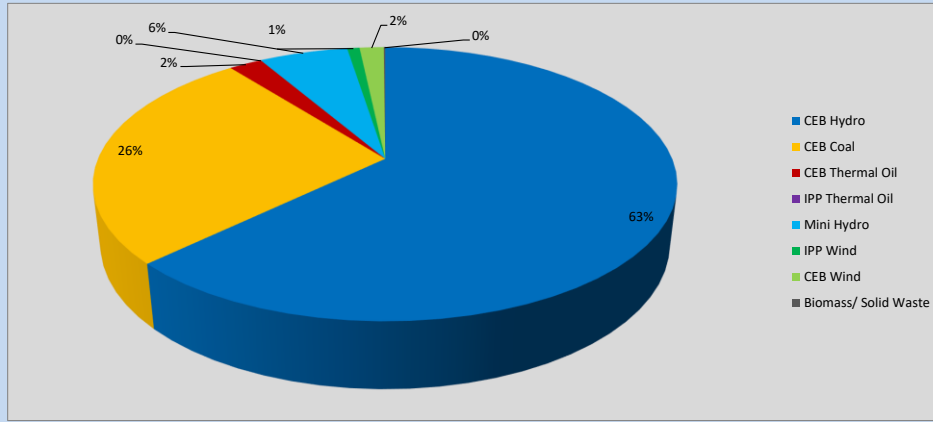


Table 06

CEB Hydro	1289	MW
CEB Coal	545	MW
CEB Thermal Oil	45	MW
IPP Thermal Oil	0	MW
Mini Hydro (Telemetered)	121	MW
IPP Wind	16.8	MW
CEB Wind	32.8	MW
Biomass/ Solid Waste	2	MW

Recorded Peak Demand Data

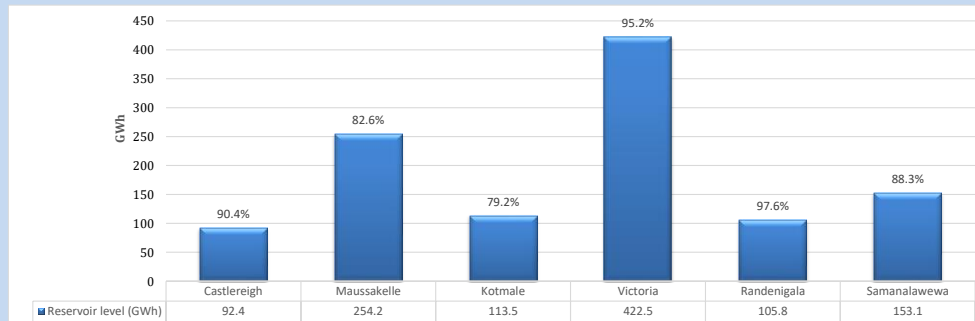
Table 07

Night Peak*	2,051	MW
Day Peak Maximum Demand	1,543	MW
Day Peak Minimum Demand	1,162	MW
Off Peak Minimum Demand	1,200	MW

Above figures are excluding contribution from roof top solar, non telemetered solar and mini hydro plants

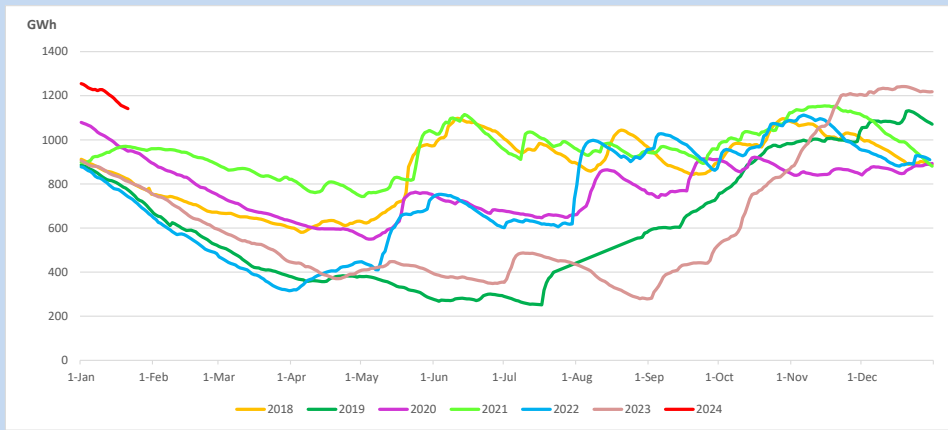
Reservoir Levels -

as at 06.00 Hr on January 22, 2024

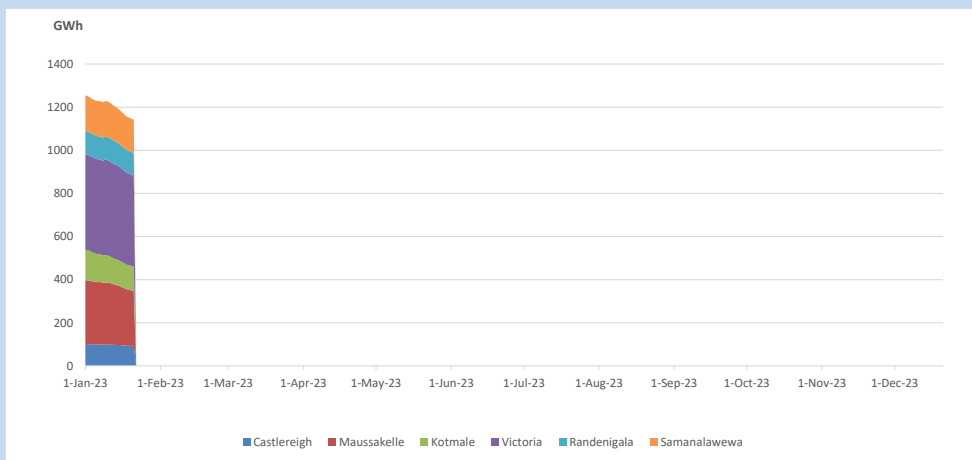


Total Reservoir Level 1141.5 GWh
% of Total capacity 89.3%

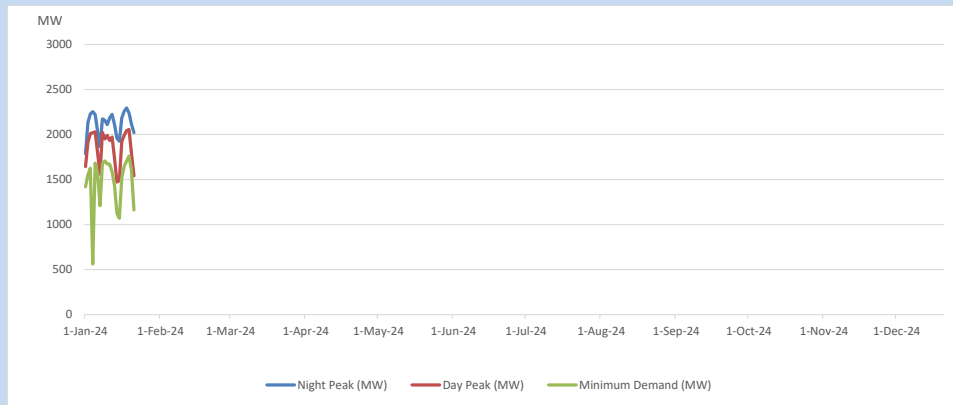
11. Comparison of Total Reservoir Storage Levels with Past Years



12. Variation of Major Hydro Reservoir Levels in the current year (GWh)



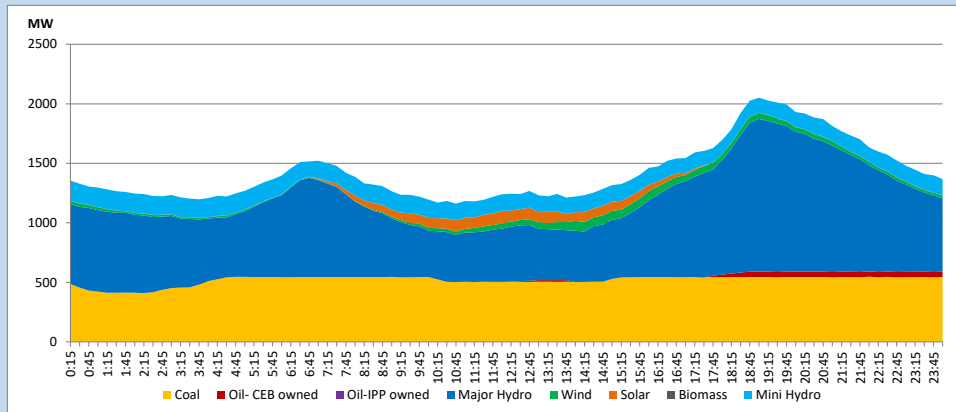
13. Variation of Demand during the current year



The above figures are excluding contribution from roof top solar, non telemetered solar and mini hydro plants

14. Daily Load Curve

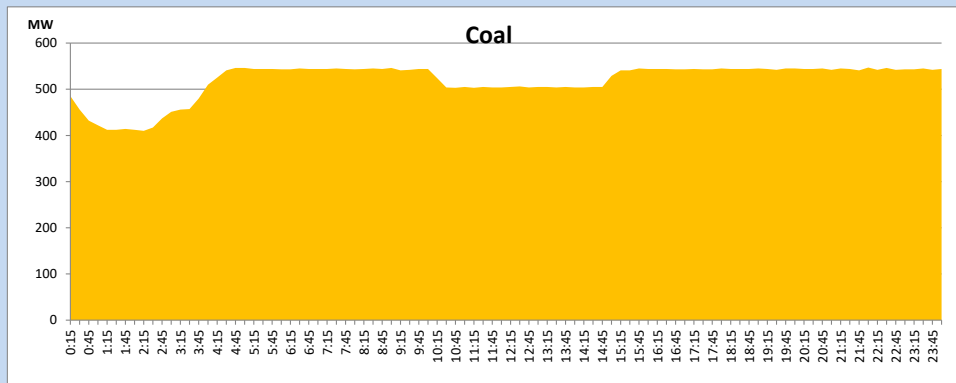
January 21, 2024



Solar and wind data is based on Telemetered Power Stations only

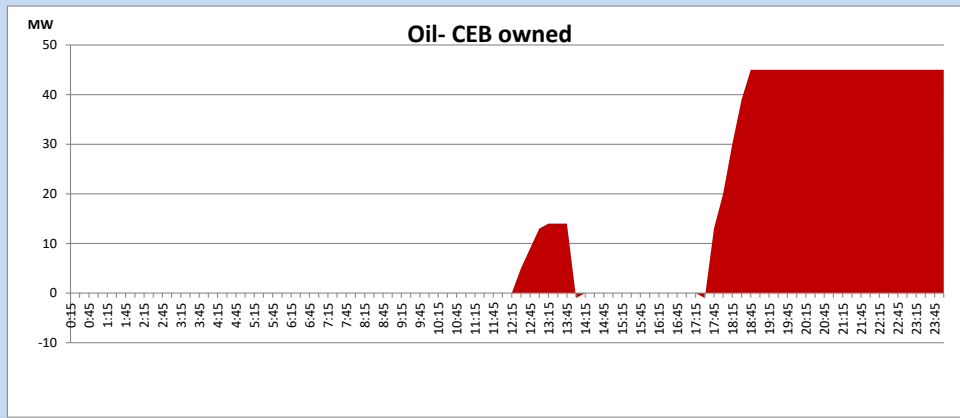
Coal Generation during

January 21, 2024



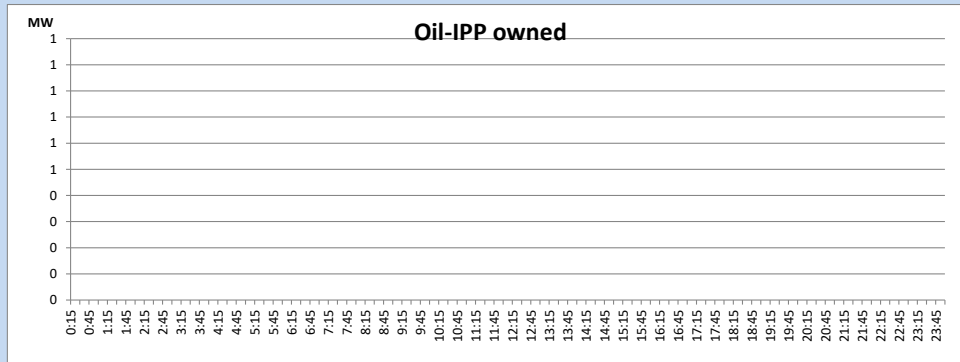
CEB Oil Plant Generation during

January 21, 2024



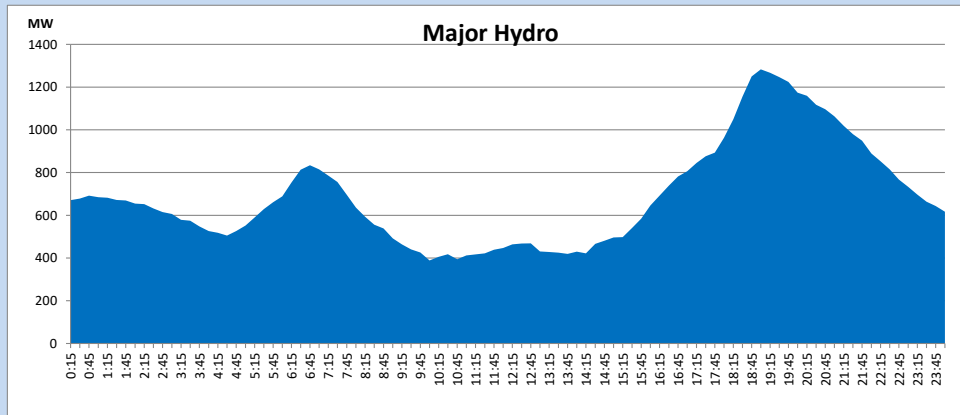
IPP Oil Plant Generation during

January 21, 2024



Major Hydro Generation during

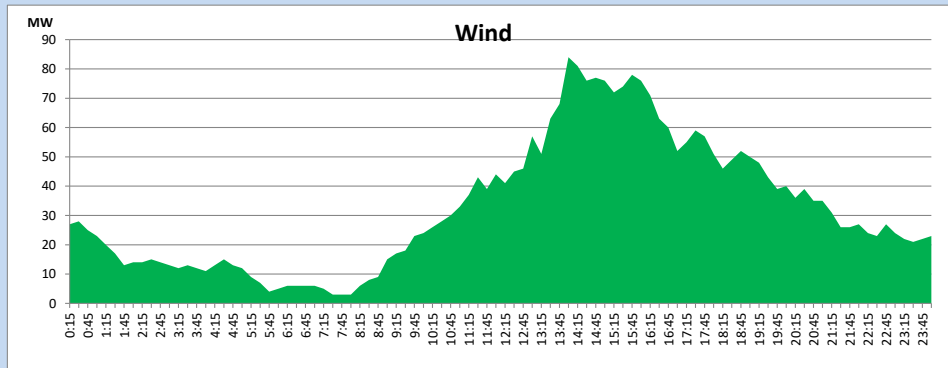
January 21, 2024



Wind Generation during

January 21, 2024

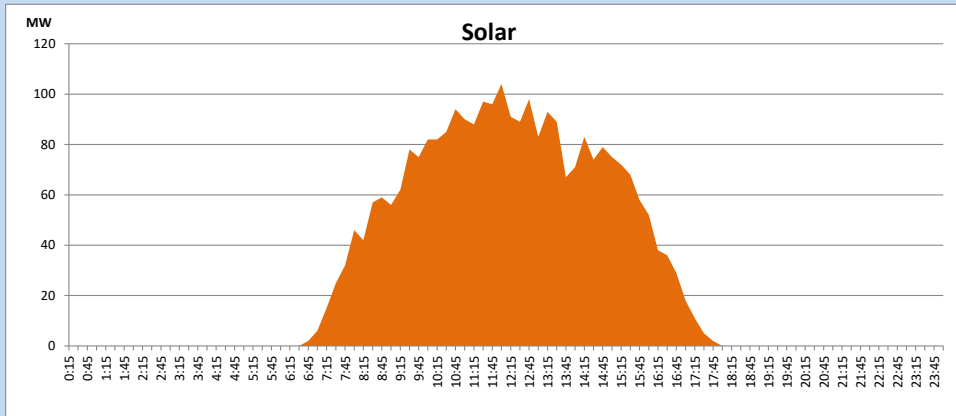
Based on Telemetered Power Stations only



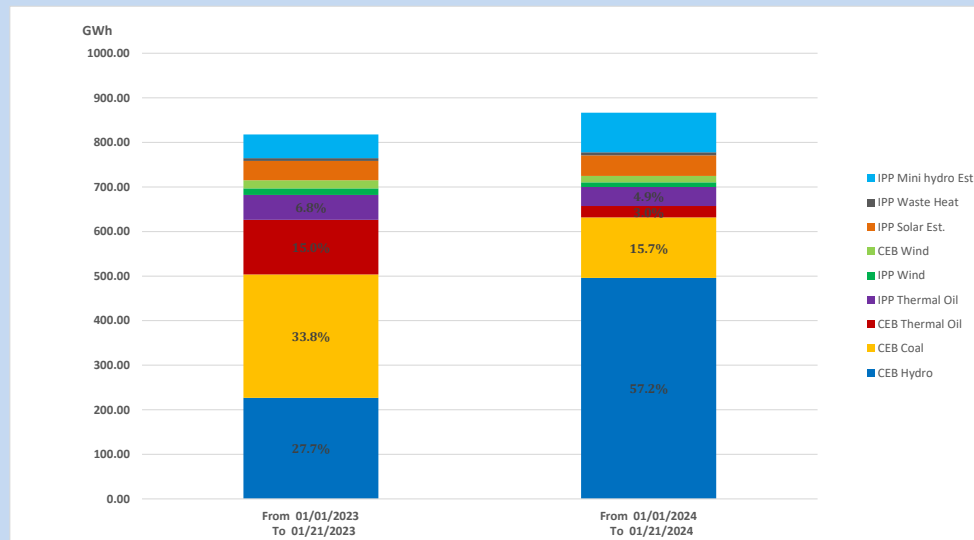
Solar Generation during

January 21, 2024

Based on Telemetered Power Stations only



15. Cumulative Dispatch Comparison with Last Year



Cumulative dispatch
From 01/01/2023 To 01/21/2023
From 01/01/2024 To 01/21/2024

818 GWh
867 GWh

(Excluding Unserved Energy)

The above figures are including contribution from roof top solar, non telemetered solar and mini hydro plants)

Thermal Plant Fuel types

Table 08

Power Station	Primary Fuel
CEB Thermal	
Sapugaskanda 1	Heavy Fuel
Sapugaskanda 2	Heavy Fuel
Kelanitissa Small Gas Turbines	Auto Diesel
GT 7 - Kelanitissa	Auto Diesel
Kelanitissa CCY	Naphtha or Diesel
Lakvijaya 1	Coal
Lakvijaya 2	Coal
Lakvijaya 3	Coal
Uthuru Janani	Heavy Fuel
Barge CEB	Heavy Fuel
KCCPS -2	Auto Diesel

Power Station	Primary Fuel
Private Thermal	
West Coast	Auto Diesel / Heavy Fuel
ACE Matara	Heavy Fuel
ACE Embilipitiya	Heavy Fuel

Major Incidents reported during the day

January 21, 2024

- 1) LVPS unit 01 synchronized at 04:08hrs (22.01.2024)