

# Generation and Reservoirs Statistics

January 19, 2024



PUBLIC UTILITIES COMMISSION OF SRI LANKA

## 1. Daily Generation Mix in MWh

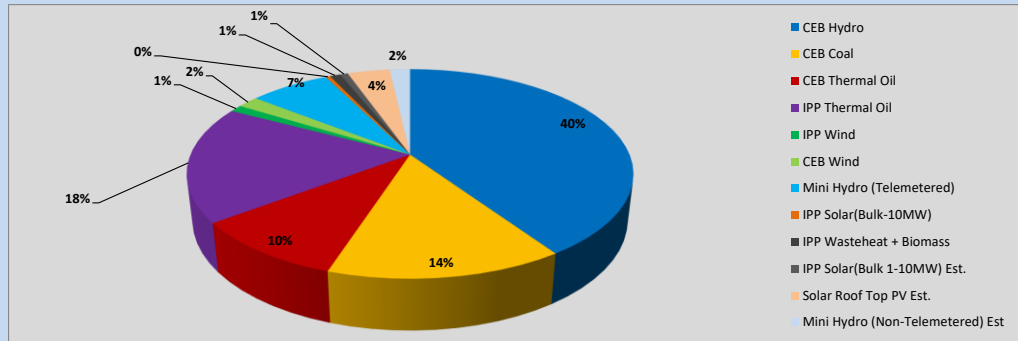


Table 01

	Generation (MWh)
CEB Hydro	18,215
CEB Coal	6,508
CEB Thermal Oil	4,362
IPP Thermal Oil	8,109
IPP Wind	484
CEB Wind	817
Mini Hydro (Telemetered)	3,125
IPP Solar (Bulk)	177
IPP Waste heat + Biomass	409
<b>Total Generation (Excluding estimated figures)</b>	<b>42,206</b>
* Estimated unserved energy	0
* Estimated Mini Hydro (Non telemetered)	789
* Estimated IPP Solar PV (Bulk 1-10MW)	304
* Estimated Solar Roof Top PV	1650
<b>Total Generation (Including estimated figures)</b>	<b>44,949</b>

\* Estimated figures of CEB generation report

Table 02

	Installed Capacity (MW)
CEB Hydro	1409
CEB Coal	810
CEB Thermal Oil	781
IPP Thermal Oil (West Coast, ACE Matara and ACE Embilipitiya)	387
IPP Wind	148
CEB Wind	100
Mini Hydro	422
IPP Waste heat + Biomass	50
IPP Solar	136
Rooftop Solar (Ordinary)	277
Rooftop Solar (LT Bulk)	263
Rooftop Solar (HT Bulk)	70

Data Source - Monthly Review Report [Aug-2023]

## 2. Cumulative Dispatch

Following data excludes the contribution from roof top solar, non telemetered solar and mini hydro plants

Table 03 - Current Month

Category	Dispatch (GWh)	
CEB Hydro	461	58.53%
CEB Coal	113	14.31%
CEB Thermal Oil	22	2.81%
IPP Thermal	40	5.09%
SPP Wind	10	1.25%
CEB Wind	13	1.68%
Mini Hydro *	81	10.24%
IPP Solar *	42	5.29%
IPP Waste heat + BMP	6	0.79%
<b>Total</b>	<b>788</b>	

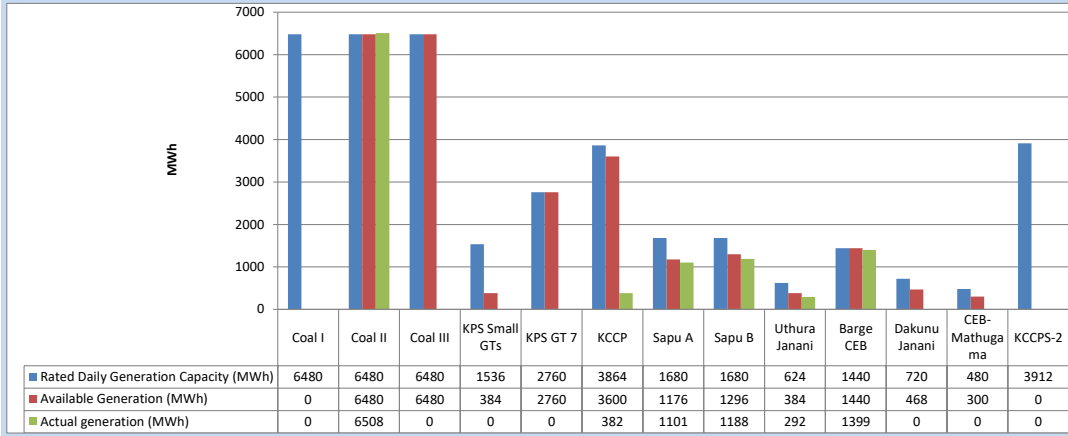
Table 04 - Current Year

Category	Dispatch (GWh)	
CEB Hydro	461	58.53%
CEB Coal	113	14.31%
CEB Thermal Oil	22	2.81%
IPP Thermal	40	5.09%
SPP Wind	10	1.25%
CEB Wind	13	1.68%
Mini Hydro *	81	10.24%
IPP Solar *	42	5.29%
IPP Waste heat	6	0.79%
<b>Total</b>	<b>788</b>	

\*Including estimated contribution from non telemetered plants

### 3. CEB owned Thermal Plant Dispatch

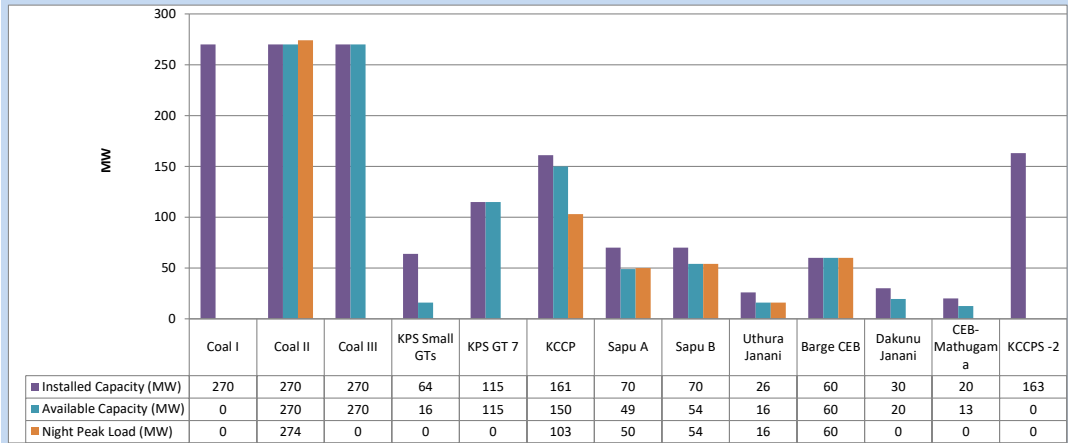
January 19, 2024



Available Generation is estimated based on plant availability at 6.00am on

January 20, 2024

### 4. CEB owned Thermal Plant Loading at the Night Peak

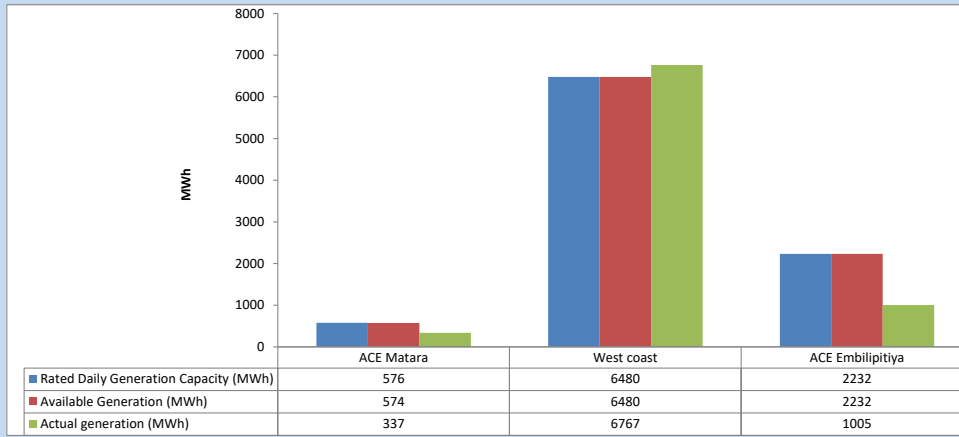


Plant availability is recorded at 6.00 am on

January 20, 2024

### 5. IPP owned Thermal Plant Dispatch

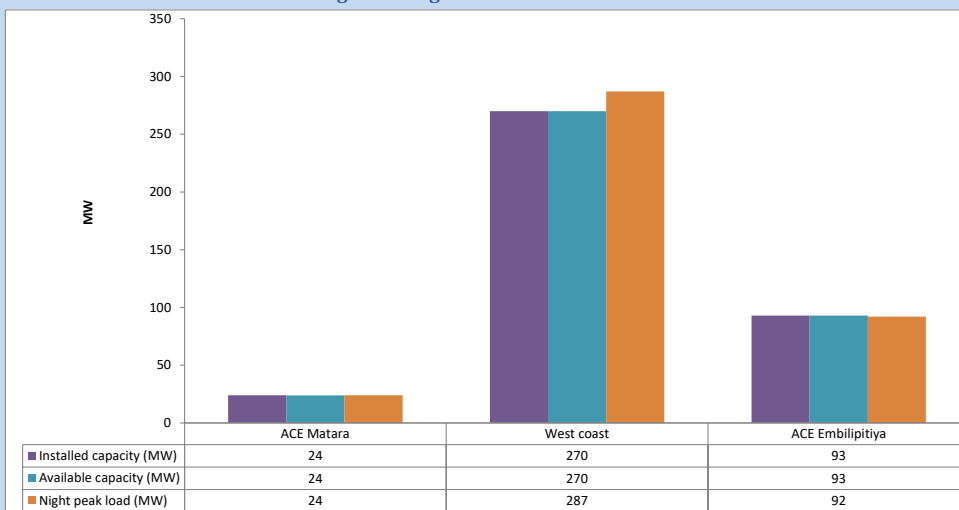
January 19, 2024



Available Generation is estimated based on plant availability at 6.00am on

January 20, 2024

### 6. IPP owned Thermal Plant Loading at the Night Peak

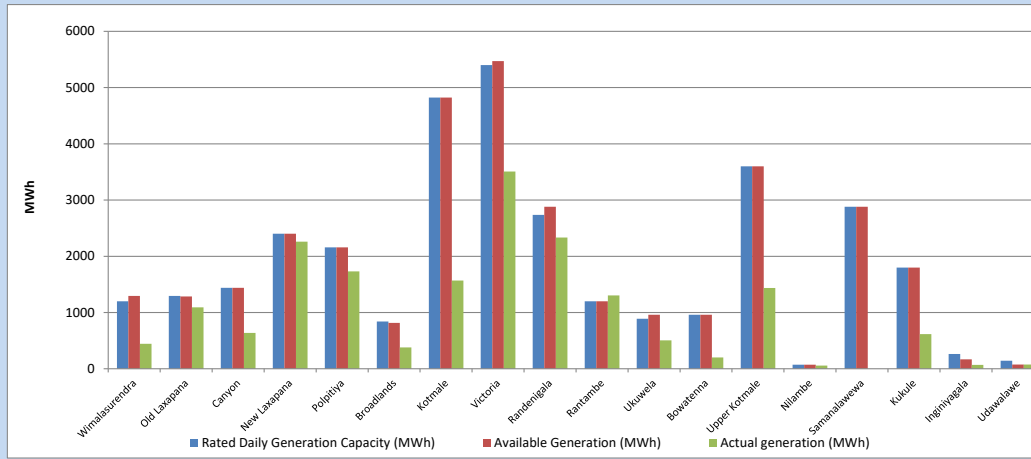


Plant availability is recorded at 6.00 am on

January 20, 2024

### 7. Major Hydro Plant Dispatch

January 19, 2024

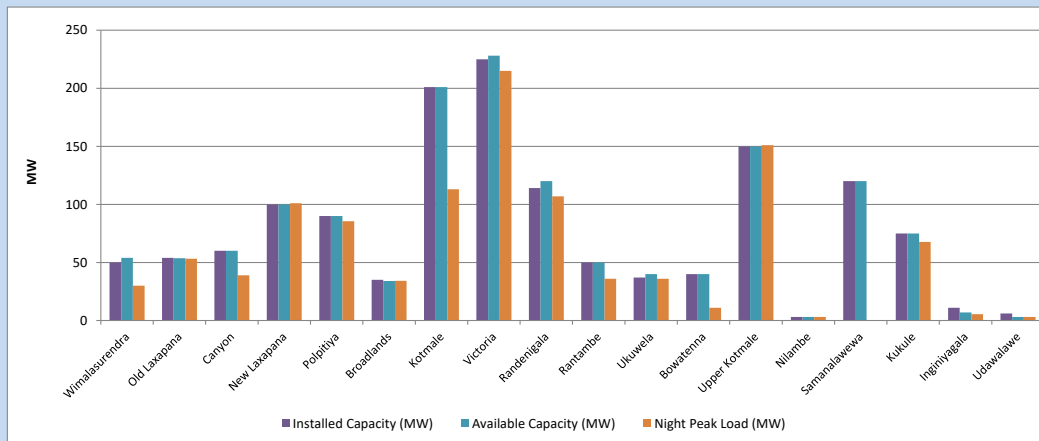


Available Generation is estimated based on plant availability at 6.00am on  
Broadlands power plant is operating in the Commissioning Stage

January 20, 2024

### 8. Major Hydro Plant Loading at Night Peak

January 19, 2024



Plant availability is recorded at 6.00 am on  
Broadlands power plant is operating in the Commissioning Stage

January 20, 2024

## 9. Summary of Major Plant performance

Table 05

Plant	Installed Capacity	Plant Availability	Night peak Load	Plant Dispatch
	(MW)	(MW)	(MW)	(MWh)
Wimalasurendra	50	54	30	445
Old Laxapana	54	54	53	1,091
Canyon	60	60	39	638
New Laxapana	100	100	101	2,259
Polpitiya	90	90	86	1,730
Broadlands	35	34	34	379
Kotmale	201	201	113	1,570
Victoria	225	228	215	3,506
Randenigala	114	120	107	2,335
Rantambe	50	50	36	1,303
Ukuwela	37	40	36	504
Bowatenna	40	40	11	200
Upper Kotmale	150	150	151	1,437
Nilambe	3	3	3	57
Samanalawewa	120	120	0	0
Kukule	75	75	68	617
Inginiyagala	11	7	6	69
Udawalawe	6	3	3	76
Puttalam Coal I	270	0	0	0
Puttalam Coal II	270	270	274	6,508
Puttalam Coal III	270	270	0	0
KPS Small GTs	64	16	0	0
KPS GT 7	115	115	0	0
KCCP	161	150	103	382
Sapugaskanda A	70	49	50	1,101
Sapugaskanda B	70	54	54	1,188
Uthura Janani	26	16	16	292
Barge CEB	60	60	60	1,399
CEB-Hambantota	30	20	0	0
CEB-Mathugama	20	13	0	0
ACE Matara	24	24	24	337
Asia Power	50	0	0	0
KCCPS -2	163	0	0	0
West Coast	270	270	287	6,767
Nothern Power	36	0	0	0
ACE Embilipitiya	93	93	92	1,005
Total	3,483	2,848	2,221	42,207

Plant availability is the availability recorded at 6 am on

January 20, 2024

### 10. Contribution to the Night Peak in MW

January 19, 2024

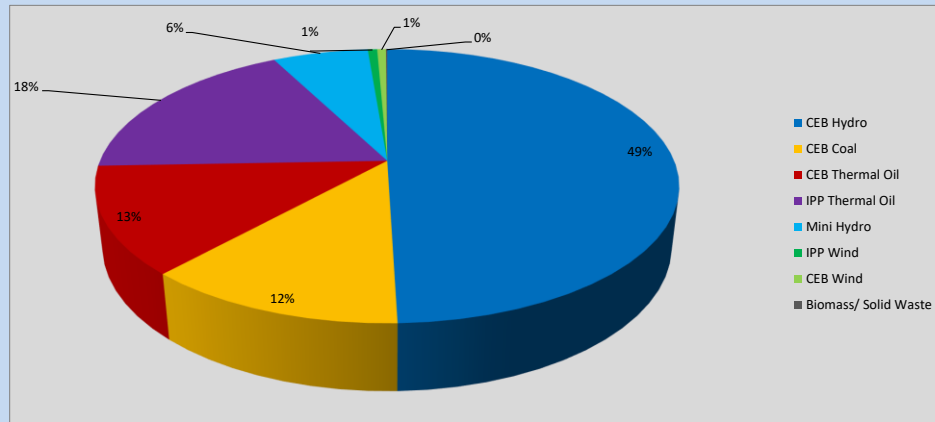


Table 06

CEB Hydro	1109	MW
CEB Coal	274	MW
CEB Thermal Oil	283	MW
IPP Thermal Oil	403	MW
Mini Hydro (Telemetered)	141	MW
IPP Wind	13.9	MW
CEB Wind	12.9	MW
Biomass/ Solid Waste	2	MW

### Recorded Peak Demand Data

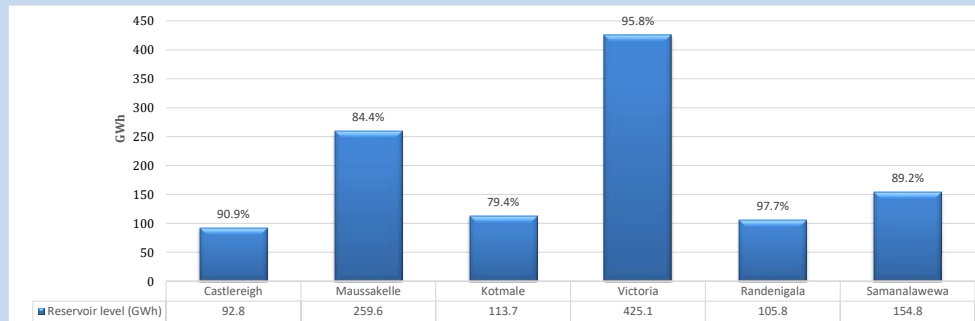
Table 07

Night Peak*	2,239	MW
Day Peak Maximum Demand	2,056	MW
Day Peak Minimum Demand	1,761	MW
Off Peak Minimum Demand	1,306	MW

Above figures are excluding contribution from roof top solar, non telemetered solar and mini hydro plants

### Reservoir Levels -

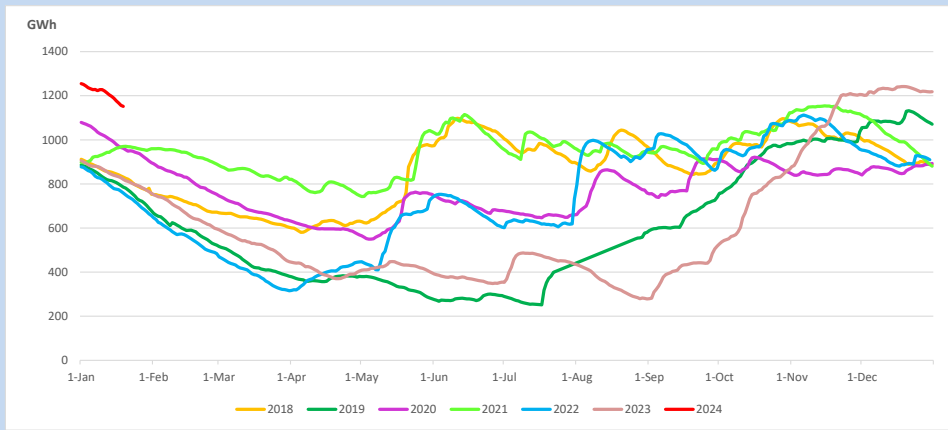
as at 06.00 Hr on January 20, 2024



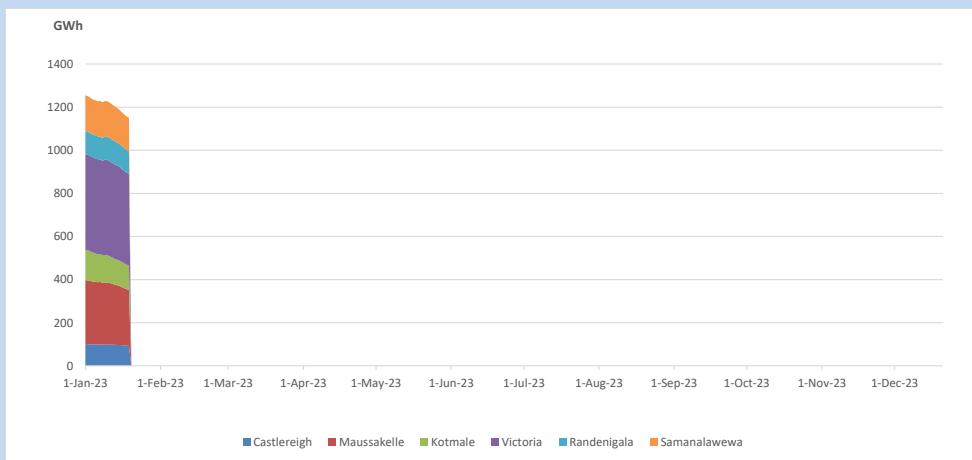
Total Reservoir Level  
% of Total capacity

1151.8 GWh  
90.1%

### 11. Comparison of Total Reservoir Storage Levels with Past Years

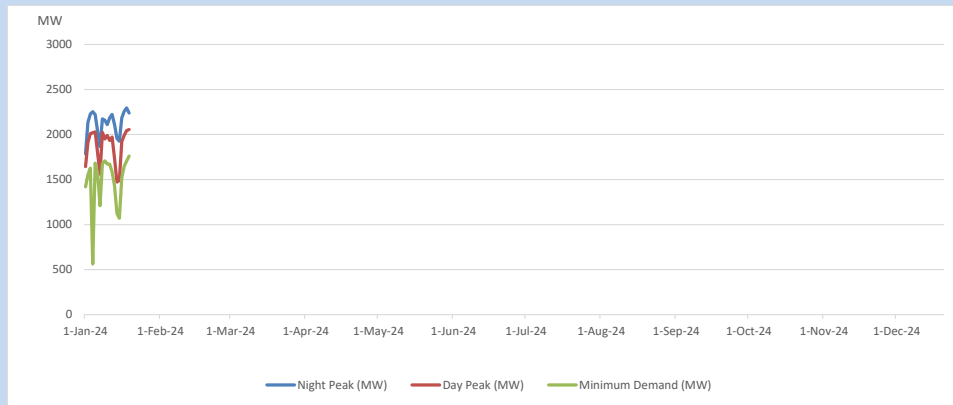


### 12. Variation of Major Hydro Reservoir Levels in the current year (GWh)





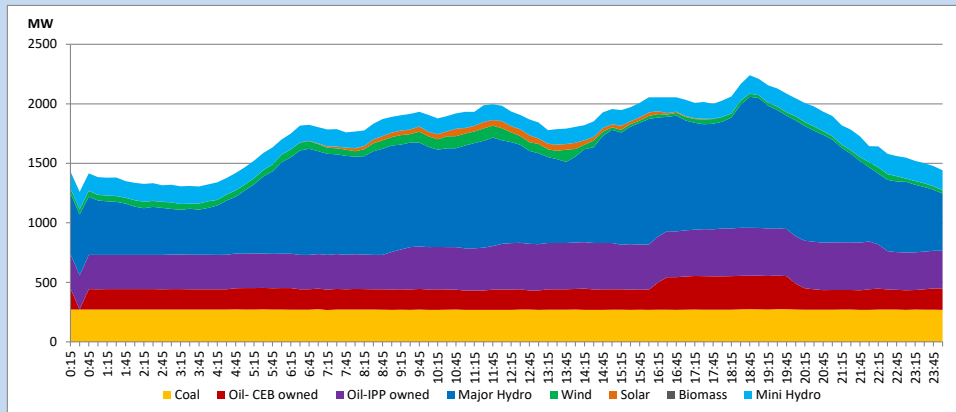
### 13. Variation of Demand during the current year



The above figures are excluding contribution from roof top solar, non telemetered solar and mini hydro plants

### 14. Daily Load Curve

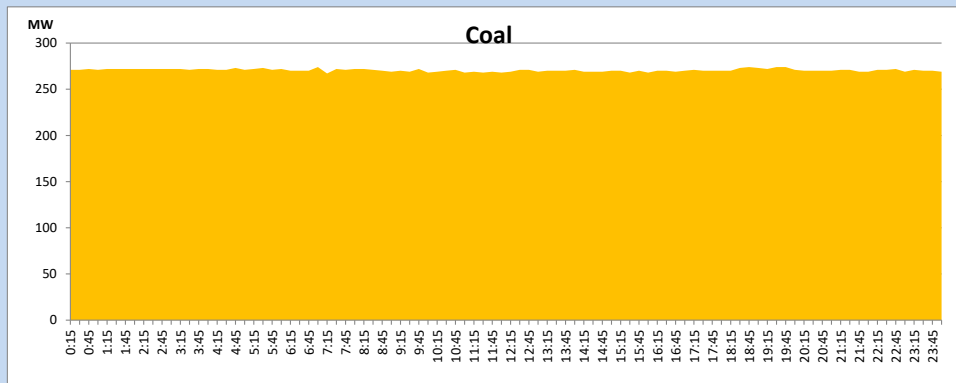
January 19, 2024



Solar and wind data is based on Telemetered Power Stations only

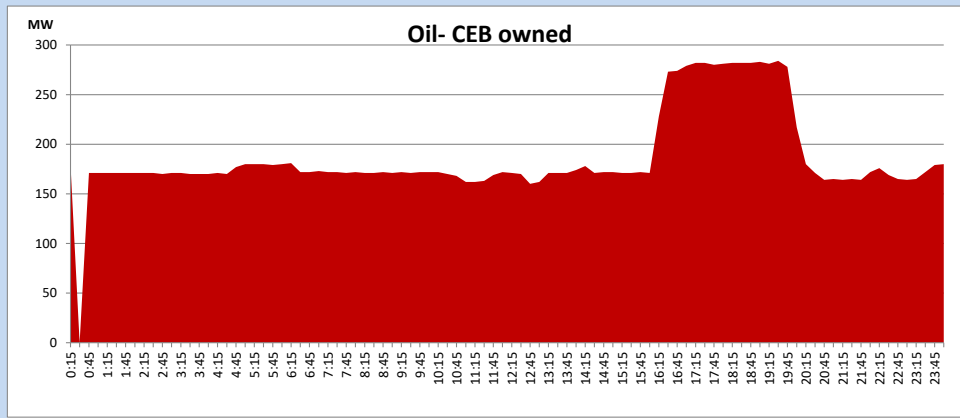
### Coal Generation during

January 19, 2024



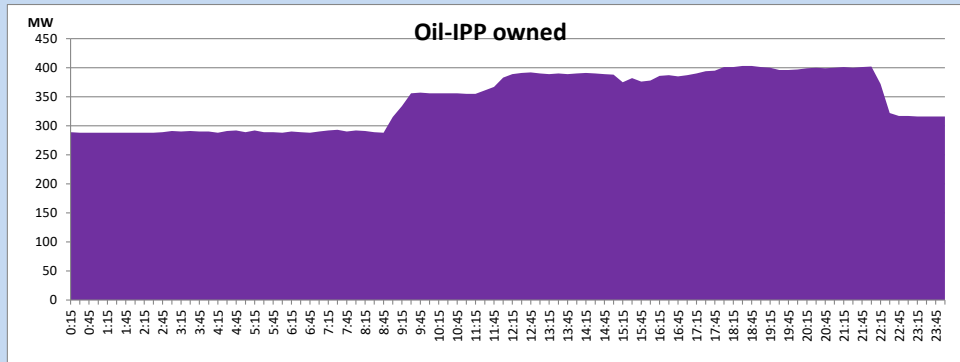
CEB Oil Plant Generation during

January 19, 2024



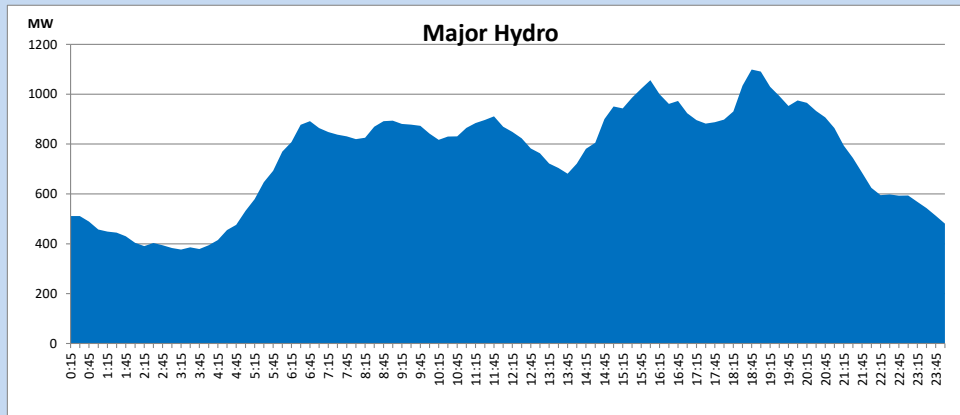
IPP Oil Plant Generation during

January 19, 2024



Major Hydro Generation during

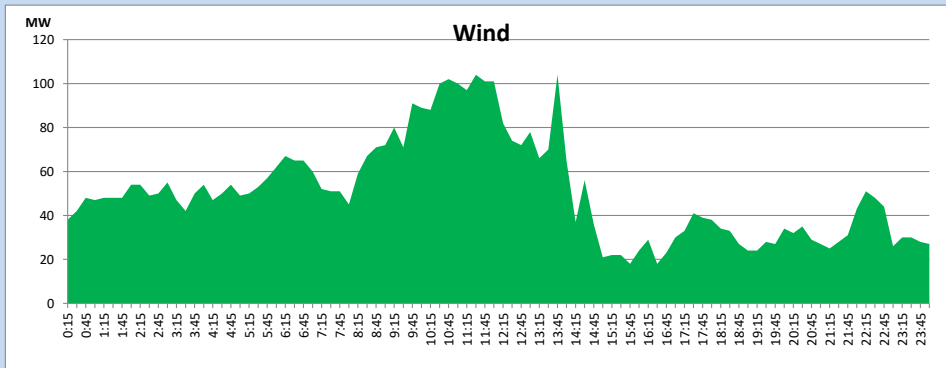
January 19, 2024



## Wind Generation during

January 19, 2024

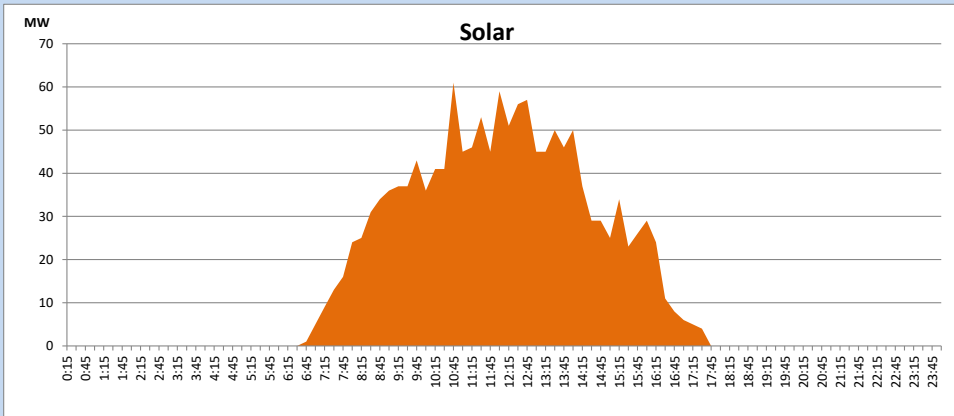
Based on Telemetered Power Stations only



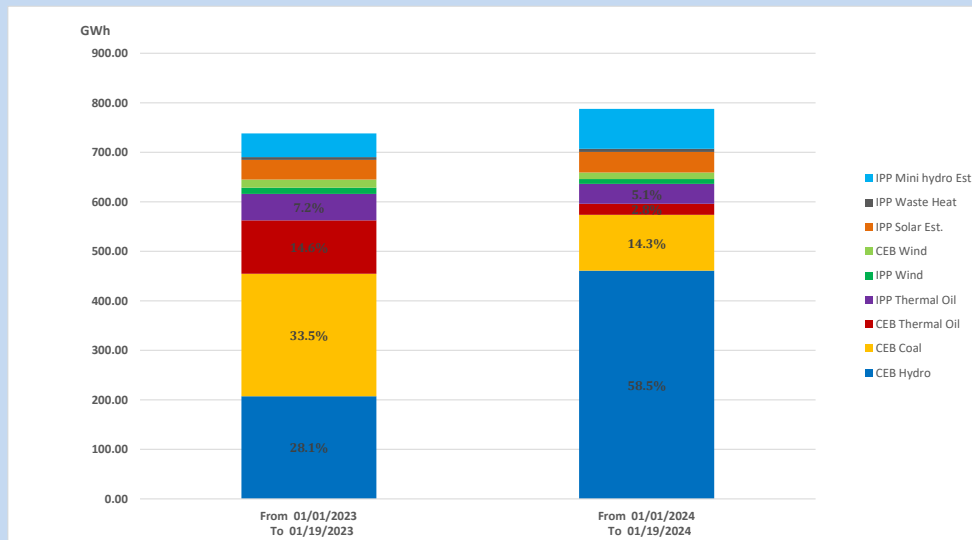
## Solar Generation during

January 19, 2024

Based on Telemetered Power Stations only



## 15. Cumulative Dispatch Comparison with Last Year



Cumulative dispatch  
 From 01/01/2023 To 01/19/2023  
 From 01/01/2024 To 01/18/2024

738 GWh  
 788 GWh

The above figures are including contribution from roof top solar, non telemetered solar and mini hydro plants)

Thermal Plant Fuel types

Table 08

Power Station	Primary Fuel
CEB Thermal	
Sapugaskanda 1	Heavy Fuel
Sapugaskanda 2	Heavy Fuel
Kelanitissa Small Gas Turbines	Auto Diesel
GT 7 - Kelanitissa	Auto Diesel
Kelanitissa CCY	Naphtha or Diesel
Lakvijaya 1	Coal
Lakvijaya 2	Coal
Lakvijaya 3	Coal
Uthuru Janani	Heavy Fuel
Barge CEB	Heavy Fuel
KCCPS -2	Auto Diesel

Power Station	Primary Fuel
Private Thermal	
West Coast	Auto Diesel / Heavy Fuel
ACE Matara	Heavy Fuel
ACE Embilipitiya	Heavy Fuel

Major Incidents reported during the day

January 19, 2024

- 1) Horana - Mathugama 132kV cct & Horana - Kesbewa - Panadura 132kV cct tripped and A/R from all ends at 19:20hrs due to operation o Distance protection & Differential Protection, respectively
- 2) Samanawalawewa unit 01 and unit 02, which performed forced shutdown on 18/01/2024, resumed generation at 00:22hrs (20/01/2024) and 00:34hrs (20/01/2024), respectively.
- 3) Ambalangoda - New Galle 132kV cct 02 tripped and A/R at 6:17hrs (20/01/2024) from both ends due to the operation of differential protection.