

Generation and Reservoirs Statistics

January 18, 2024



PUBLIC UTILITIES COMMISSION OF SRI LANKA

1. Daily Generation Mix in MWh

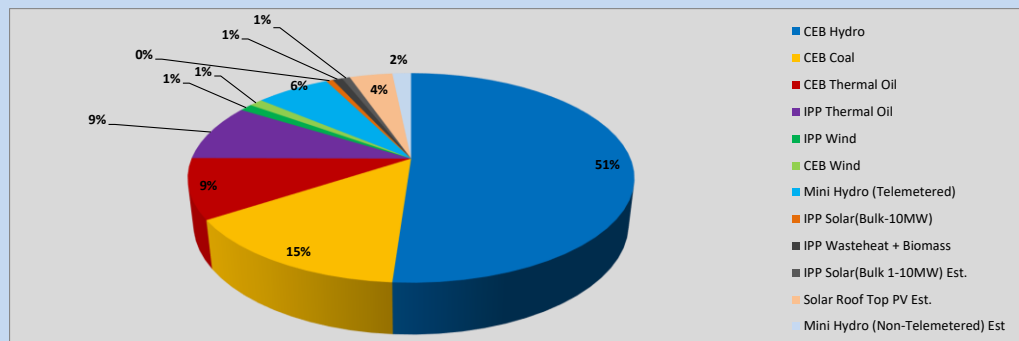


Table 01

	Generation (MWh)
CEB Hydro	22,706
CEB Coal	6,524
CEB Thermal Oil	4,128
IPP Thermal Oil	3,888
IPP Wind	492
CEB Wind	523
Mini Hydro (Telemetered)	2,852
IPP Solar (Bulk)	264
IPP Waste heat + Biomass	374
Total Generation (Excluding estimated figures)	41,751
* Estimated unserved energy	0
* Estimated Mini Hydro (Non telemetered)	720
* Estimated IPP Solar PV (Bulk 1-10MW)	304
* Estimated Solar Roof Top PV	1650
Total Generation (Including estimated figures)	44,425

* Estimated figures of CEB generation report

Table 02

	Installed Capacity (MW)
CEB Hydro	1409
CEB Coal	810
CEB Thermal Oil	781
IPP Thermal Oil (West Coast, ACE Matara and ACE Embilipitiya)	387
IPP Wind	148
CEB Wind	100
Mini Hydro	422
IPP Waste heat + Biomass	50
IPP Solar	136
Rooftop Solar (Ordinary)	277
Rooftop Solar (LT Bulk)	263
Rooftop Solar (HT Bulk)	70

Data Source - Monthly Review Report [Aug-2023]

2. Cumulative Dispatch

Following data excludes the contribution from roof top solar, non telemetered solar and mini hydro plants

Table 03 - Current Month

Category	Dispatch (GWh)	
CEB Hydro	443	59.62%
CEB Coal	106	14.30%
CEB Thermal Oil	18	2.39%
IPP Thermal	32	4.31%
SPP Wind	9	1.26%
CEB Wind	12	1.67%
Mini Hydro *	77	10.34%
IPP Solar *	40	5.32%
IPP Waste heat + BMP	6	0.78%
Total	743	

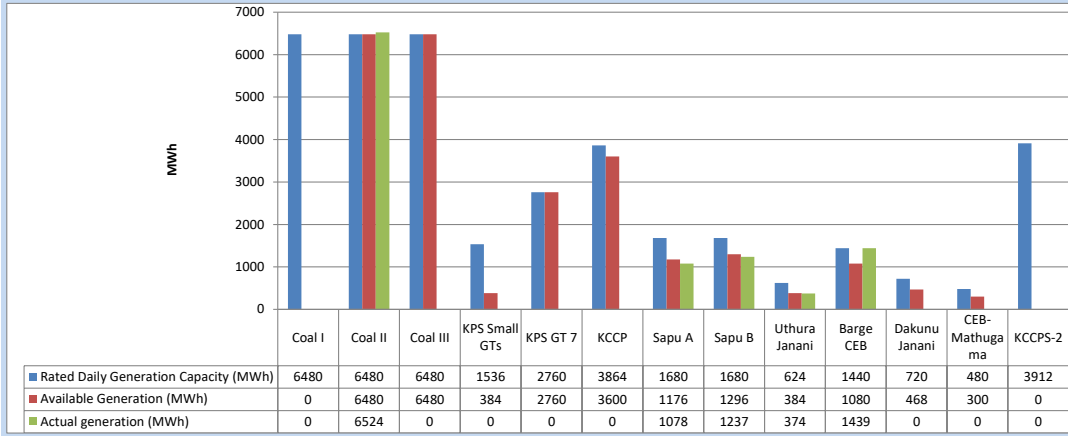
Table 04 - Current Year

Category	Dispatch (GWh)	
CEB Hydro	443	59.62%
CEB Coal	106	14.30%
CEB Thermal Oil	18	2.39%
IPP Thermal	32	4.31%
SPP Wind	9	1.26%
CEB Wind	12	1.67%
Mini Hydro *	77	10.34%
IPP Solar *	40	5.32%
IPP Waste heat	6	0.78%
Total	743	

*Including estimated contribution from non telemetered plants

3. CEB owned Thermal Plant Dispatch

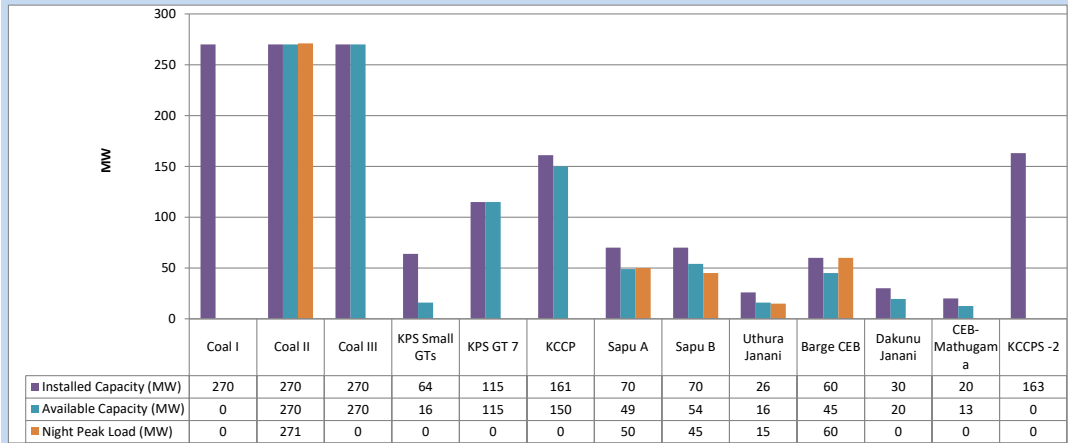
January 18, 2024



Available Generation is estimated based on plant availability at 6.00am on

January 19, 2024

4. CEB owned Thermal Plant Loading at the Night Peak

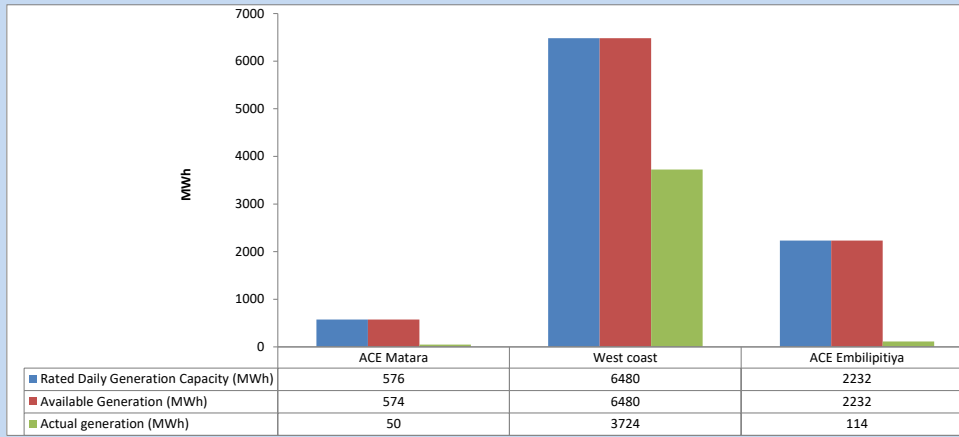


Plant availability is recorded at 6.00 am on

January 19, 2024

5. IPP owned Thermal Plant Dispatch

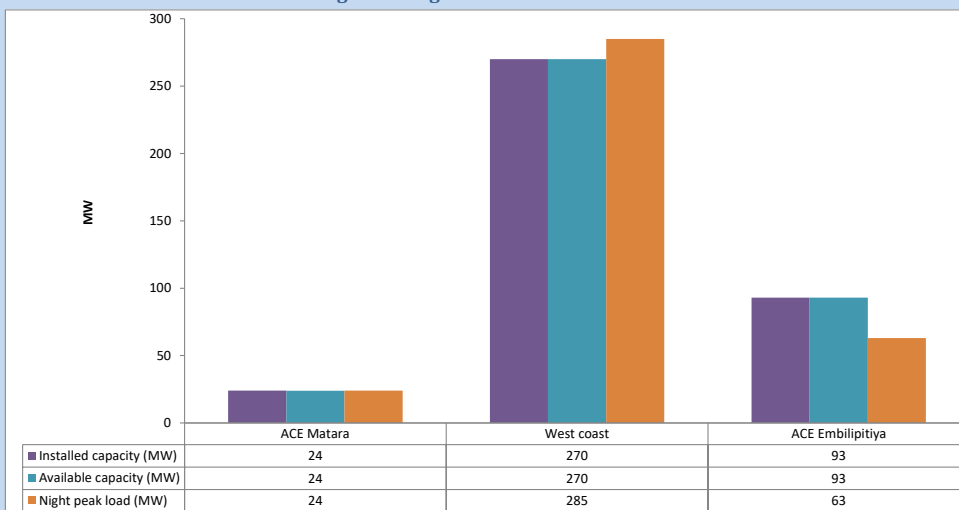
January 18, 2024



Available Generation is estimated based on plant availability at 6.00am on

January 19, 2024

6. IPP owned Thermal Plant Loading at the Night Peak

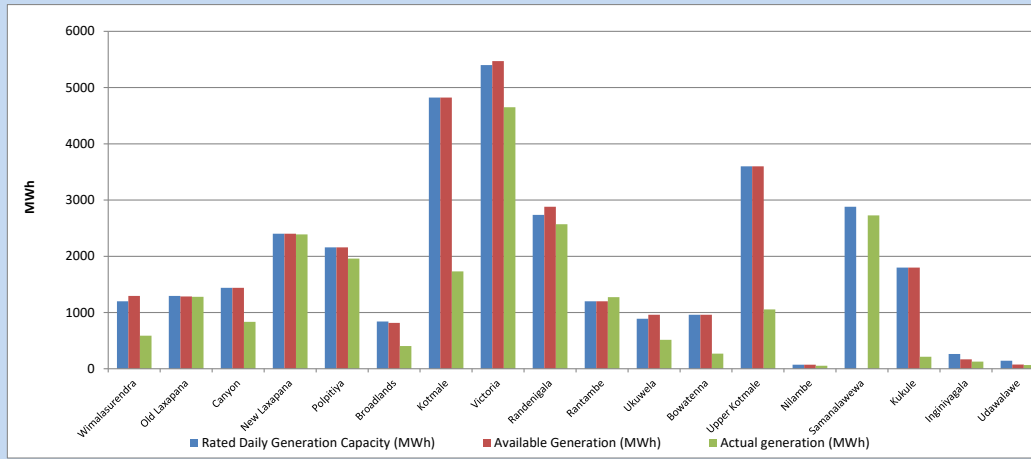


Plant availability is recorded at 6.00 am on

January 19, 2024

7. Major Hydro Plant Dispatch

January 18, 2024

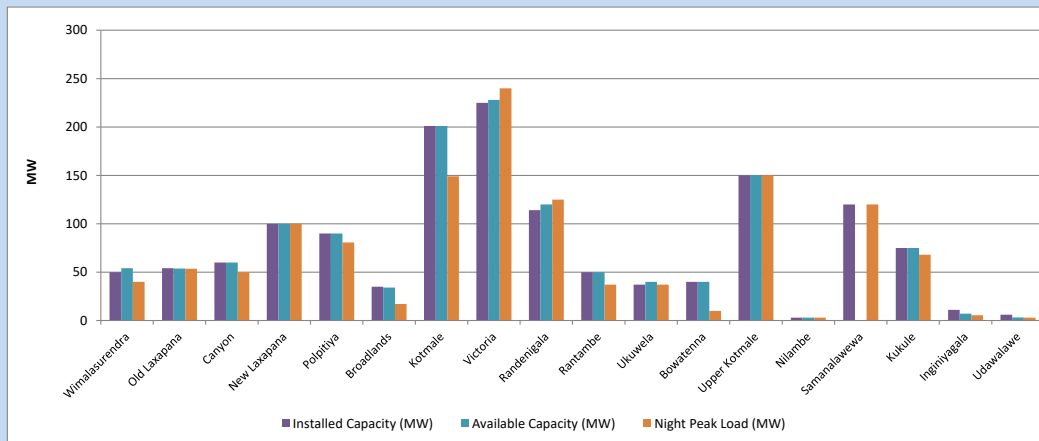


Available Generation is estimated based on plant availability at 6.00am on
Broadlands power plant is operating in the Commissioning Stage

January 19, 2024

8. Major Hydro Plant Loading at Night Peak

January 18, 2024



Plant availability is recorded at 6.00 am on
Broadlands power plant is operating in the Commissioning Stage

January 19, 2024

9. Summary of Major Plant performance

Table 05

Plant	Installed Capacity	Plant Availability	Night peak Load	Plant Dispatch
	(MW)	(MW)	(MW)	(MWh)
Wimalasurendra	50	54	40	589
Old Laxapana	54	54	54	1,280
Canyon	60	60	50	834
New Laxapana	100	100	100	2,389
Polpitiya	90	90	81	1,960
Broadlands	35	34	17	404
Kotmale	201	201	149	1,730
Victoria	225	228	240	4,652
Randenigala	114	120	125	2,570
Rantambe	50	50	37	1,274
Ukuwela	37	40	37	515
Bowatenna	40	40	10	268
Upper Kotmale	150	150	150	1,054
Nilambe	3	3	3	53
Samanalawewa	120	0	120	2,726
Kukule	75	75	68	214
Inginiyagala	11	7	6	127
Udawalawe	6	3	3	67
Puttalam Coal I	270	0	0	0
Puttalam Coal II	270	270	271	6,524
Puttalam Coal III	270	270	0	0
KPS Small GTs	64	16	0	0
KPS GT 7	115	115	0	0
KCCP	161	150	0	0
Sapugaskanda A	70	49	50	1,078
Sapugaskanda B	70	54	45	1,237
Uthura Janani	26	16	15	374
Barge CEB	60	45	60	1,439
CEB-Hambantota	30	20	0	0
CEB-Mathugama	20	13	0	0
ACE Matara	24	24	24	50
Asia Power	50	0	0	0
KCCPS -2	163	0	0	0
West Coast	270	270	285	3,724
Nothern Power	36	0	0	0
ACE Embilipitiya	93	93	63	114
Total	3,483	2,713	2,278	41,751

Plant availability is the availability recorded at 6 am on

January 19, 2024

10. Contribution to the Night Peak in MW

January 18, 2024

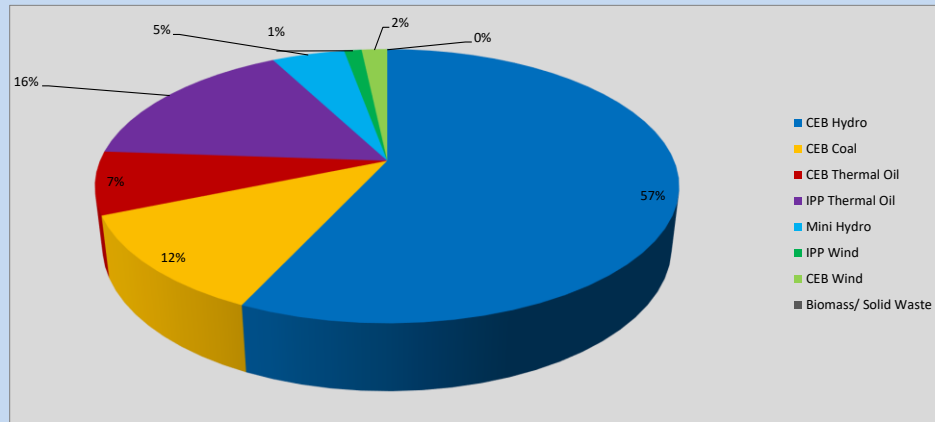


Table 06

CEB Hydro	1306	MW
CEB Coal	271	MW
CEB Thermal Oil	170	MW
IPP Thermal Oil	372	MW
Mini Hydro (Telemetered)	111	MW
IPP Wind	26.6	MW
CEB Wind	38.8	MW
Biomass/ Solid Waste	0	MW

Recorded Peak Demand Data

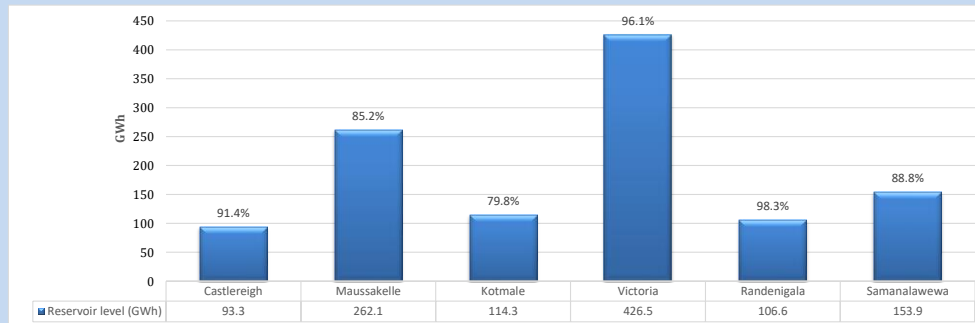
Table 07

Night Peak*	2,295	MW
Day Peak Maximum Demand	2,043	MW
Day Peak Minimum Demand	1,706	MW
Off Peak Minimum Demand	1,264	MW

Above figures are excluding contribution from roof top solar, non telemetered solar and mini hydro plants

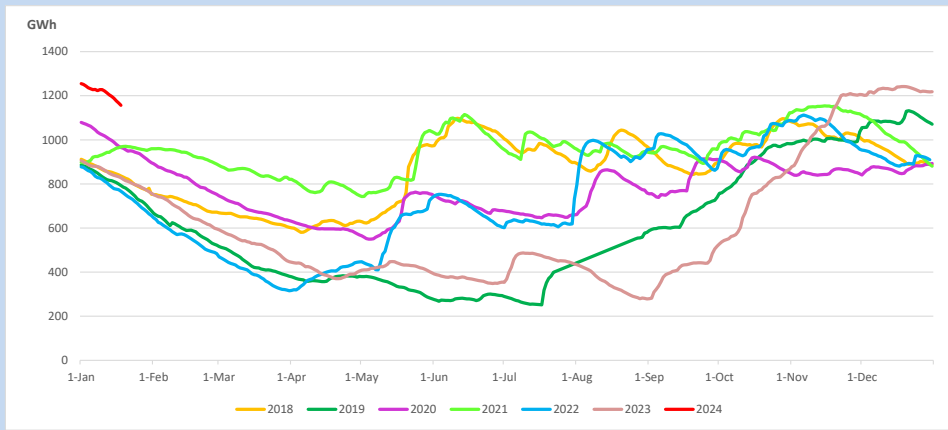
Reservoir Levels -

as at 06.00 Hr on January 19, 2024

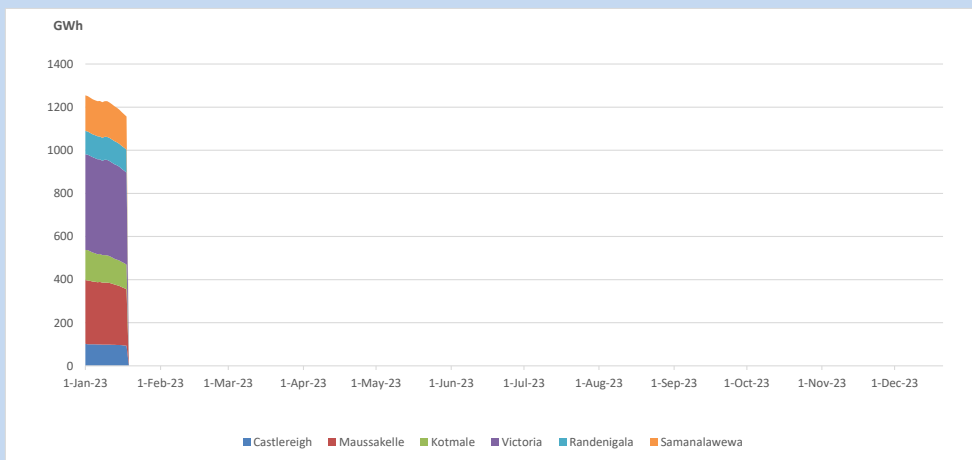


Total Reservoir Level 1156.7 GWh
% of Total capacity 90.5%

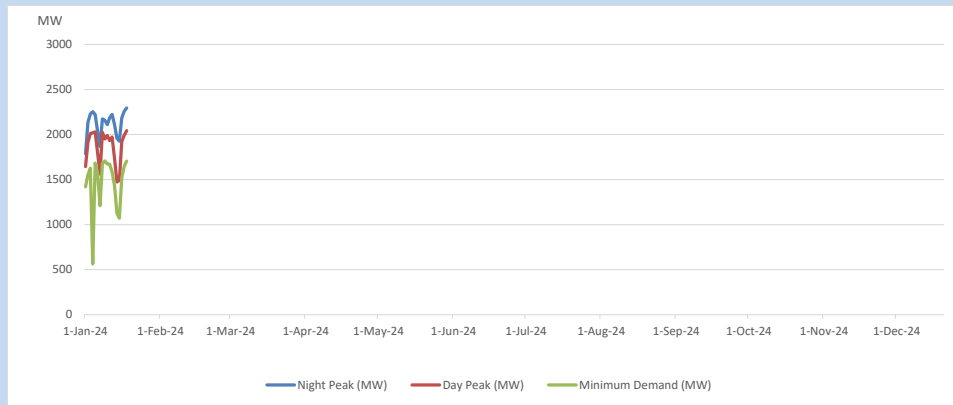
11. Comparison of Total Reservoir Storage Levels with Past Years



12. Variation of Major Hydro Reservoir Levels in the current year (GWh)



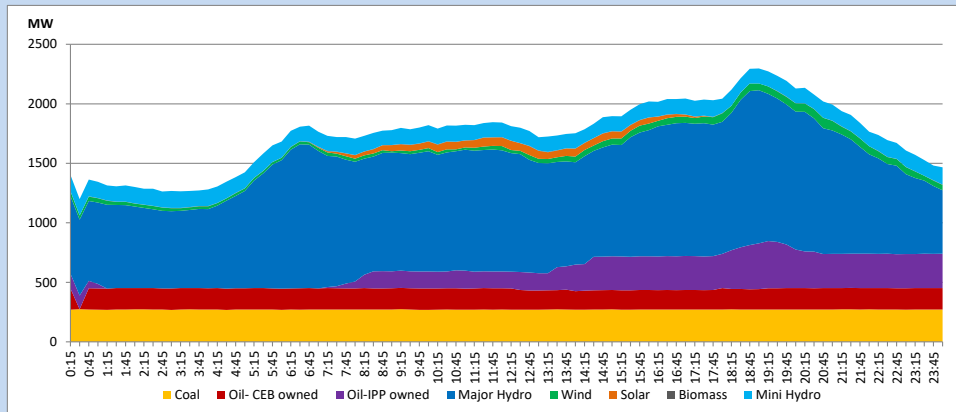
13. Variation of Demand during the current year



The above figures are excluding contribution from roof top solar, non telemetered solar and mini hydro plants

14. Daily Load Curve

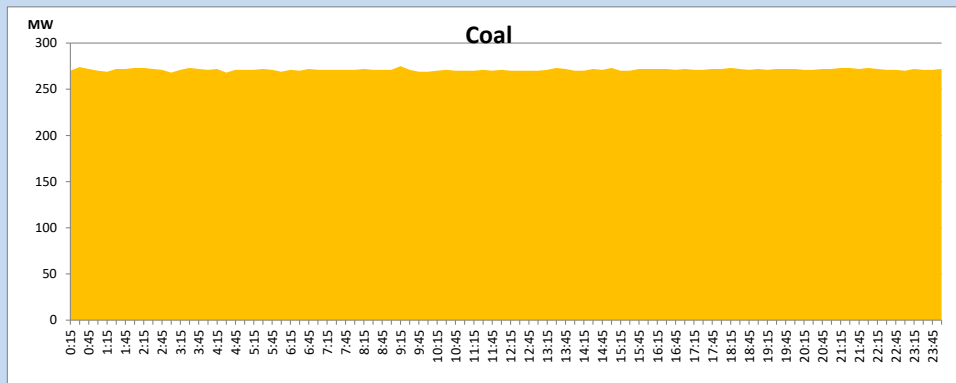
January 18, 2024



Solar and wind data is based on Telemetered Power Stations only

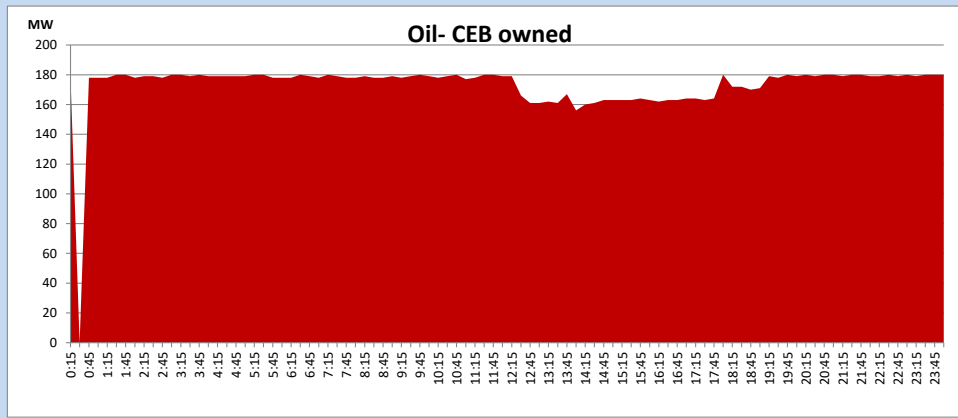
Coal Generation during

January 18, 2024



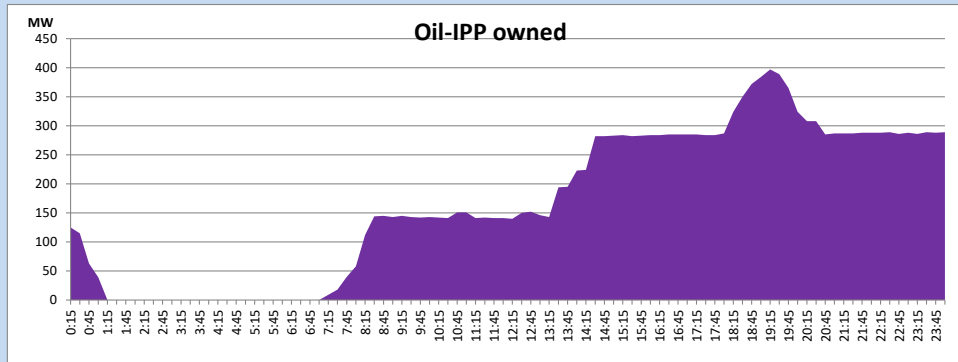
CEB Oil Plant Generation during

January 18, 2024



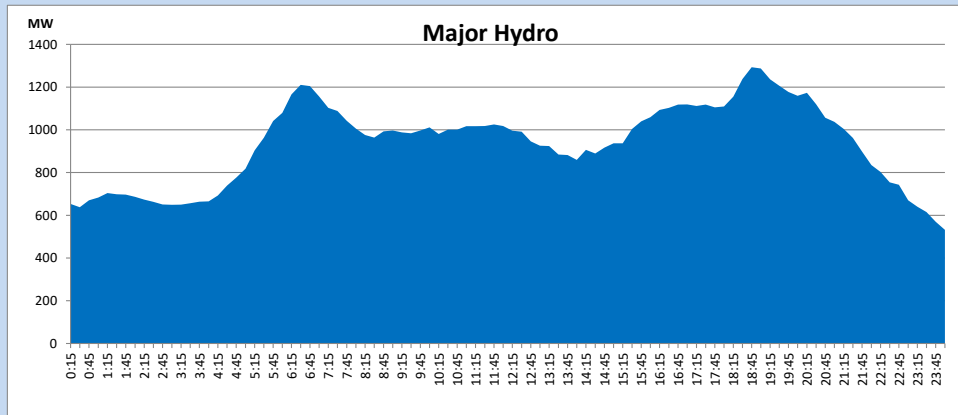
IPP Oil Plant Generation during

January 18, 2024



Major Hydro Generation during

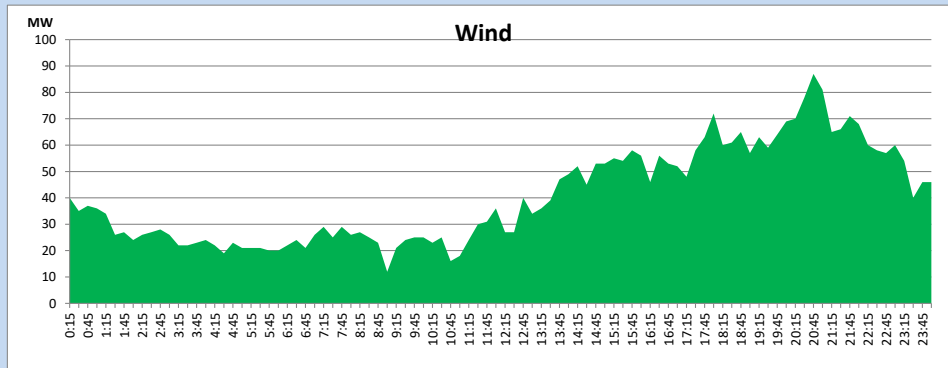
January 18, 2024



Wind Generation during

January 18, 2024

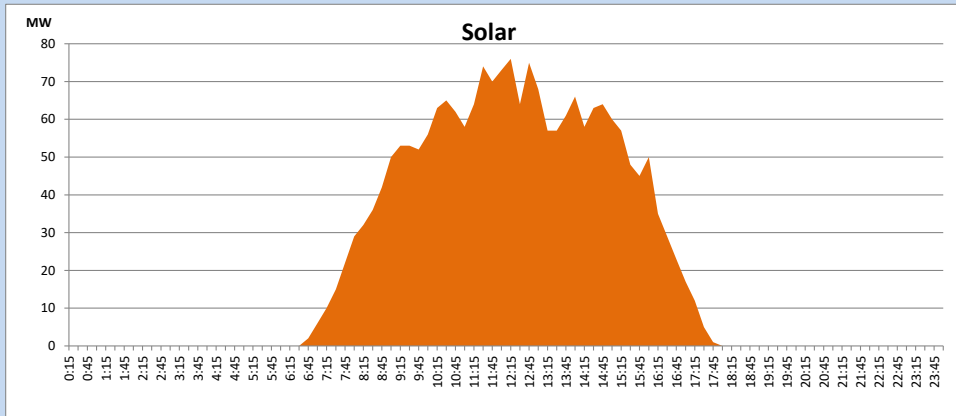
Based on Telemetered Power Stations only



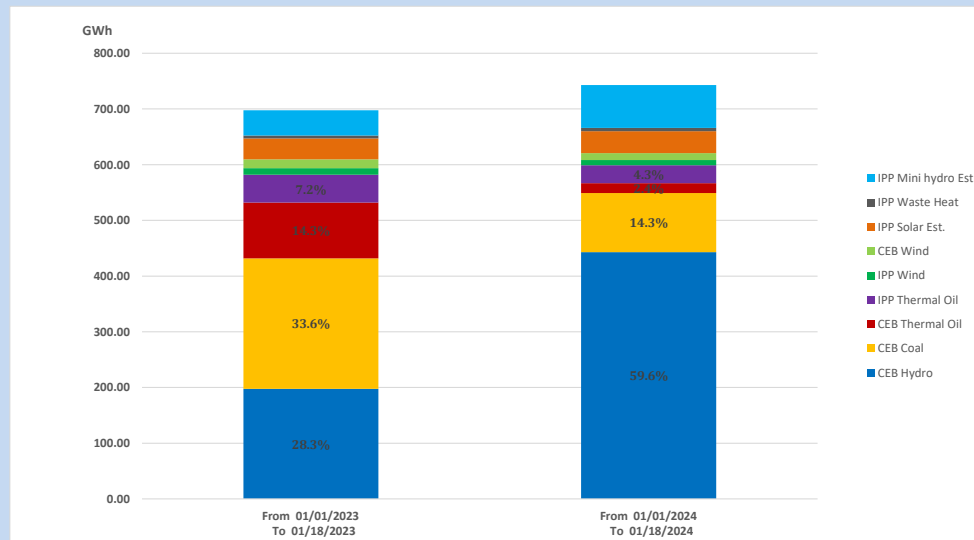
Solar Generation during

January 18, 2024

Based on Telemetered Power Stations only



15. Cumulative Dispatch Comparison with Last Year



Cumulative dispatch
From 01/01/2023 To 01/18/2023
From 01/01/2024 To 01/18/2024

698 GWh
743 GWh

The above figures are including contribution from roof top solar, non telemetered solar and mini hydro plants)

Thermal Plant Fuel types

Table 08

Power Station	Primary Fuel
CEB Thermal	
Sapugaskanda 1	Heavy Fuel
Sapugaskanda 2	Heavy Fuel
Kelanitissa Small Gas Turbines	Auto Diesel
GT 7 - Kelanitissa	Auto Diesel
Kelanitissa CCY	Naphtha or Diesel
Lakvijaya 1	Coal
Lakvijaya 2	Coal
Lakvijaya 3	Coal
Uthuru Janani	Heavy Fuel
Barge CEB	Heavy Fuel
KCCPS -2	Auto Diesel

Power Station	Primary Fuel
Private Thermal	
West Coast	Auto Diesel / Heavy Fuel
ACE Matara	Heavy Fuel
ACE Embilipitiya	Heavy Fuel

Major Incidents reported during the day

January 18, 2024

- 1) Polonnaruwa 132/33kV T/F 02 tripped at 11:44hrs with the indication of T/F oil temperature alarm and the T/F was restored by 12:57hrs
- 2) Samananalawewa unit 02 and unit 01 performed forced shutdown at 22:40hrs and 22:46hrs respectively due to a fault in control system. Samananalawewa both units are yet to resume generation.
- 3) Hambantota - New Polpitiya cct 01 tripped from Hambantota end, tripped and A/R from New Polpitiya end at 05:57hrs(19.01.2024 due to the operation of distance protection. Hambantota - New Polpitiya cct 01 was restored at 06:07hrs(19.01.2024).