

# Generation and Reservoirs Statistics

January 1, 2024



**PUBLIC UTILITIES COMMISSION OF SRI LANKA**

## 1. Daily Generation Mix in MWh

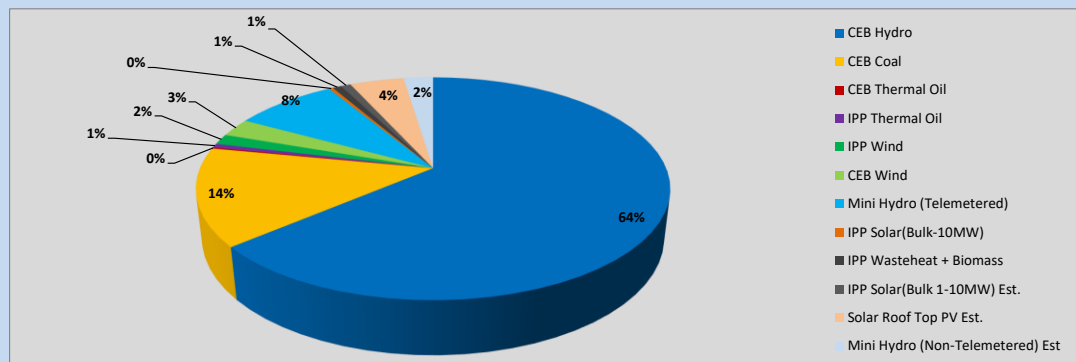


Table 01

	Generation (MWh)
CEB Hydro	23,911
CEB Coal	5,329
CEB Thermal Oil	62
IPP Thermal Oil	222
IPP Wind	568
CEB Wind	997
Mini Hydro (Telemetered)	3,134
IPP Solar (Bulk)	126
IPP Waste heat + Biomass	268
<b>Total Generation (Excluding estimated figures)</b>	<b>34,617</b>
* Estimated unserved energy	0
* Estimated Mini Hydro (Non telemetered)	901
* Estimated IPP Solar PV (Bulk 1-10MW)	304
* Estimated Solar Roof Top PV	1650
<b>Total Generation (Including estimated figures)</b>	<b>37,472</b>

\* Estimated figures of CEB generation report

Table 02

	Installed Capacity (MW)
CEB Hydro	1409
CEB Coal	810
CEB Thermal Oil	781
IPP Thermal Oil (West Coast, ACE Matara and ACE Embilipitiya)	387
IPP Wind	148
CEB Wind	100
Mini Hydro	422
IPP Waste heat + Biomass	50
IPP Solar	136
Rooftop Solar (Ordinary)	277
Rooftop Solar (LT Bulk)	263
Rooftop Solar (HT Bulk)	70

Data Source - Monthly Review Report [Aug-2023]

## 2. Cumulative Dispatch

Following data excludes the contribution from roof top solar, non telemetered solar and mini hydro plants

Table 03 - Current Month

Category	Dispatch (GWh)	
CEB Hydro	24	63.81%
CEB Coal	5	14.22%
CEB Thermal Oil	0	0.16%
IPP Thermal	0	0.59%
SPP Wind	1	1.52%
CEB Wind	1	2.67%
Mini Hydro *	4	10.76%
IPP Solar *	2	5.55%
IPP Waste heat + BMP	0	0.72%
<b>Total</b>	<b>37</b>	

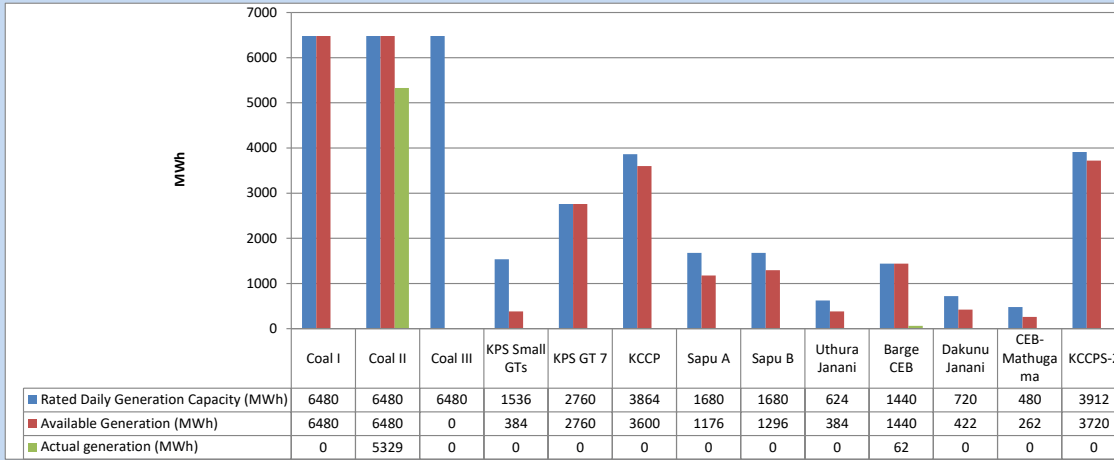
Table 04 - Current Year

Category	Dispatch (GWh)	
CEB Hydro	24	63.81%
CEB Coal	5	14.22%
CEB Thermal Oil	0	0.16%
IPP Thermal	0	0.59%
SPP Wind	1	1.52%
CEB Wind	1	2.67%
Mini Hydro *	4	10.76%
IPP Solar *	2	5.55%
IPP Waste heat	0	0.72%
<b>Total</b>	<b>37</b>	

\*Including estimated contribution from non telemetered plants

### 3. CEB owned Thermal Plant Dispatch

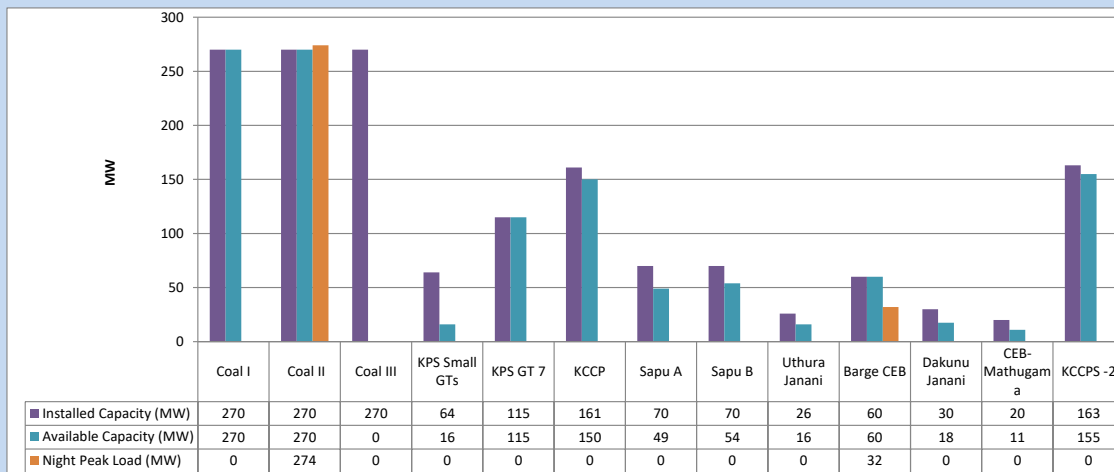
January 1, 2024



Available Generation is estimated based on plant availability at 6.00am on

January 2, 2024

### 4. CEB owned Thermal Plant Loading at the Night Peak

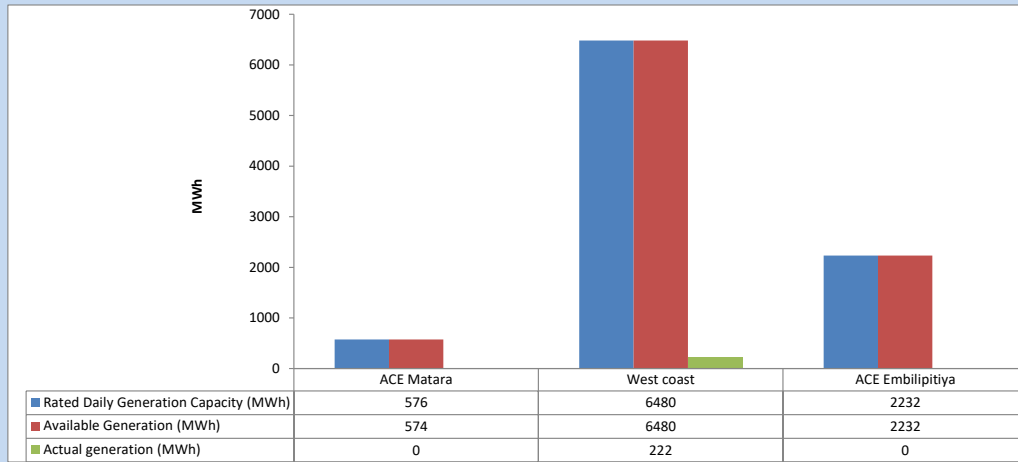


Plant availability is recorded at 6.00 am on

January 2, 2024

### 5. IPP owned Thermal Plant Dispatch

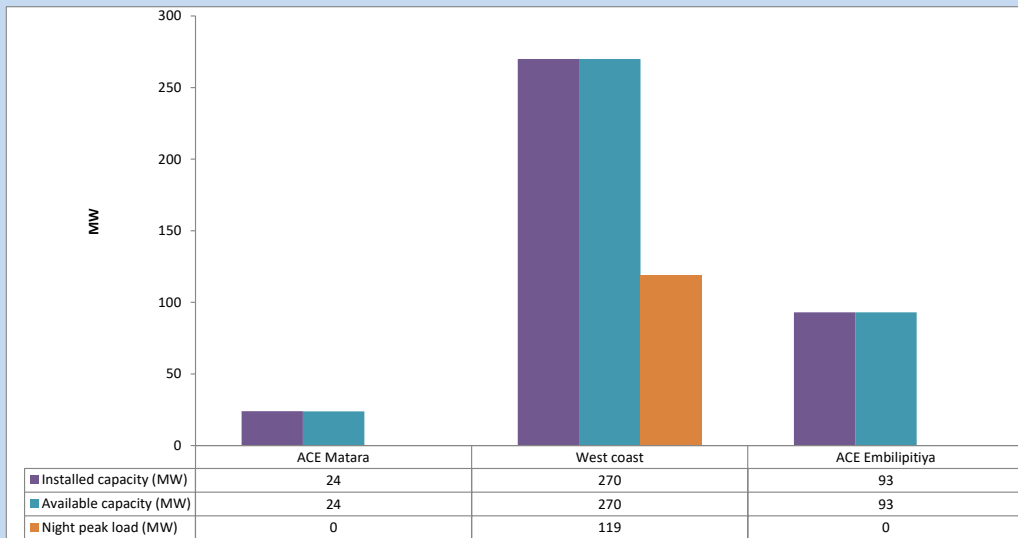
January 1, 2024



Available Generation is estimated based on plant availability at 6.00am on

January 2, 2024

### 6. IPP owned Thermal Plant Loading at the Night Peak

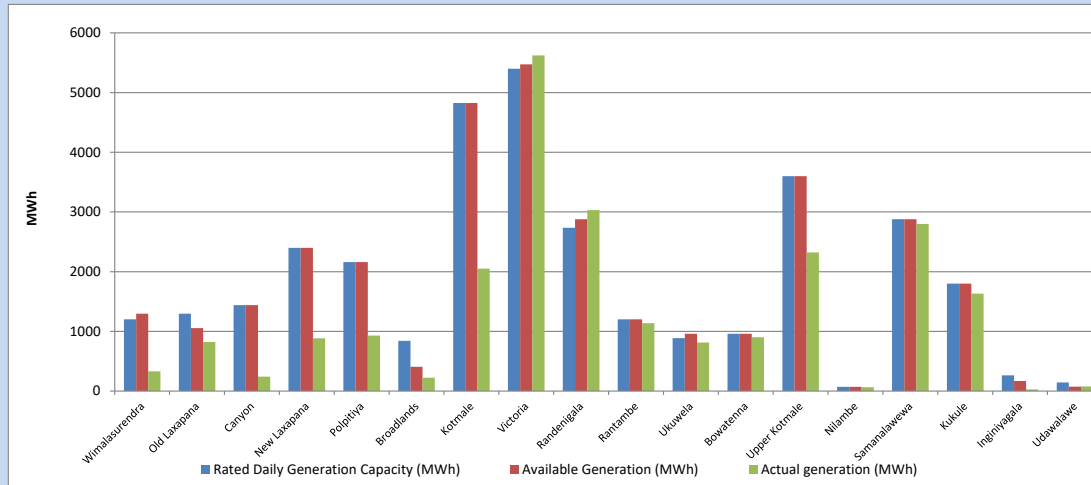


Plant availability is recorded at 6.00 am on

January 2, 2024

### 7. Major Hydro Plant Dispatch

January 1, 2024

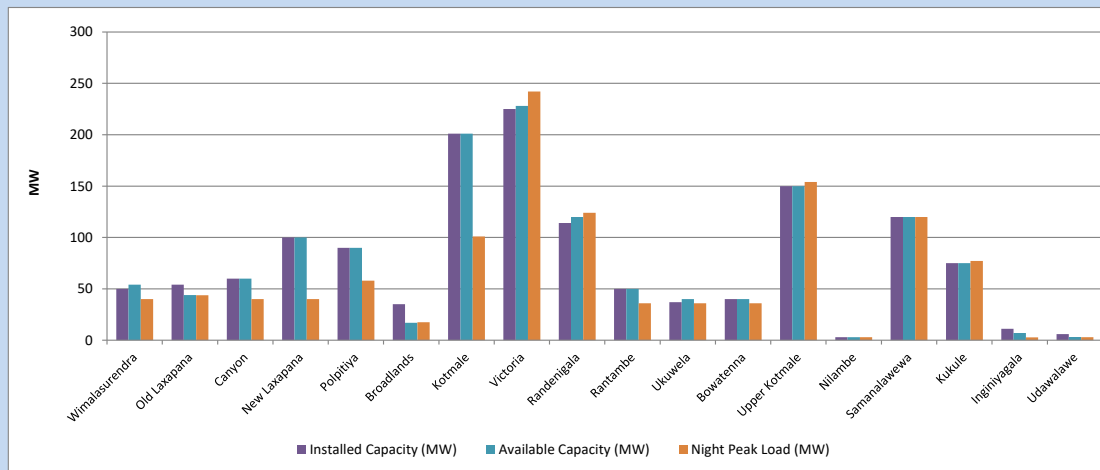


Available Generation is estimated based on plant availability at 6.00am on  
Broadlands power plant is operating in the Commissioning Stage

January 2, 2024

### 8. Major Hydro Plant Loading at Night Peak

January 1, 2024



Plant availability is recorded at 6.00 am on  
Broadlands power plant is operating in the Commissioning Stage

January 2, 2024

## 9. Summary of Major Plant performance

Table 05

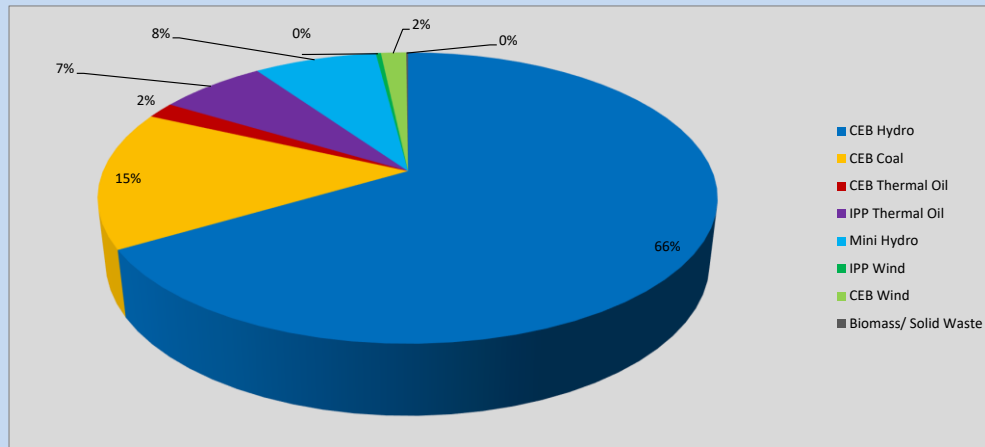
Plant	Installed Capacity (MW)	Plant Availability (MW)	Night peak Load (MW)	Plant Dispatch (MWh)
Wimalasurendra	50	54	40	329
Old Laxapana	54	44	44	823
Canyon	60	60	40	242
New Laxapana	100	100	40	882
Polpitiya	90	90	58	930
Broadlands	35	17	18	223
Kotmale	201	201	101	2,050
Victoria	225	228	242	5,623
Randenigala	114	120	124	3,032
Rantambe	50	50	36	1,138
Ukuwela	37	40	36	812
Bowatenna	40	40	36	902
Upper Kotmale	150	150	154	2,324
Nilambe	3	3	3	66
Samanalawewa	120	120	120	2,798
Kukule	75	75	77	1,631
Inginiyagala	11	7	3	28
Udawalawe	6	3	3	78
Puttalam Coal I	270	270	0	0
Puttalam Coal II	270	270	274	5,329
Puttalam Coal III	270	0	0	0
KPS Small GTs	64	16	0	0
KPS GT 7	115	115	0	0
KCCP	161	150	0	0
Sapugaskanda A	70	49	0	0
Sapugaskanda B	70	54	0	0
Uthura Janani	26	16	0	0
Barge CEB	60	60	32	62
CEB-Hambantota	30	18	0	0
CEB-Mathugama	20	11	0	0
ACE Matara	24	24	0	0
Asia Power	50	0	0	0
KCCPS -2	163	155	0	0
West Coast	270	270	119	222
Nothern Power	36	0	0	0
ACE Embilipitiya	93	93	0	0
<b>Total</b>	<b>3,483</b>	<b>2,973</b>	<b>1,772</b>	<b>34,617</b>

Plant availability is the availability recorded at 6 am on

January 2, 2024

### 10. Contribution to the Night Peak in MW

January 1, 2024



**Table 06**

CEB Hydro	1188	MW
CEB Coal	274	MW
CEB Thermal Oil	32	MW
IPP Thermal Oil	119	MW
Mini Hydro (Telemetered)	137	MW
IPP Wind	5.7	MW
CEB Wind	28.1	MW
Biomass/ Solid Waste	2	MW

#### Recorded Peak Demand Data

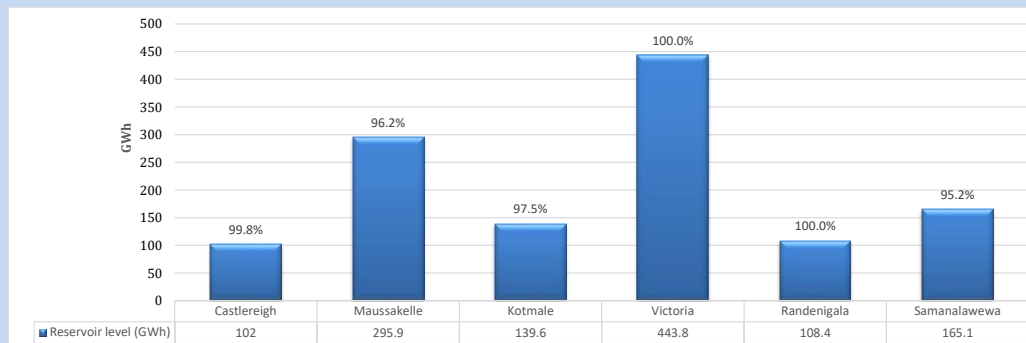
**Table 07**

Night Peak*	1,786	MW
Day Peak Maximum Demand	1,645	MW
Day Peak Minimum Demand	1,420	MW
Off Peak Minimum Demand	1,064	MW

Above figures are excluding contribution from roof top solar, non telemetered solar and mini hydro plants

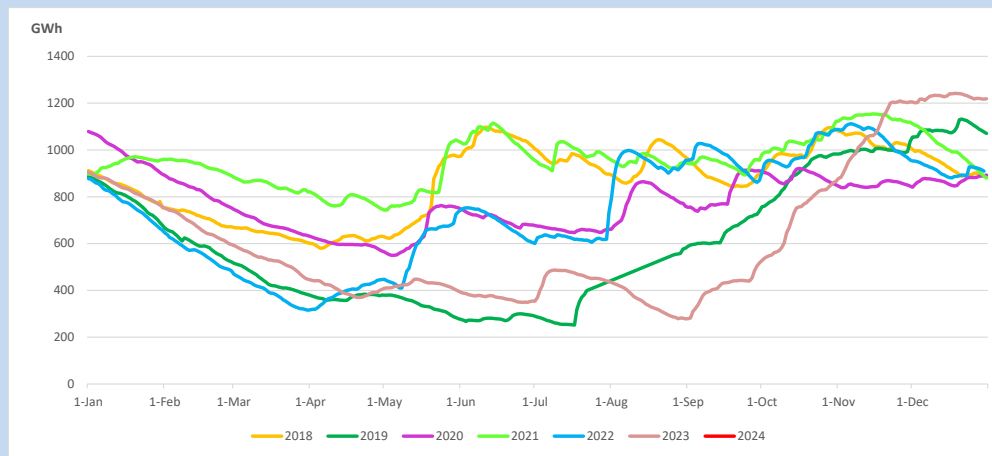
#### Reservoir Levels -

as at 06.00 Hr on January 2, 2024

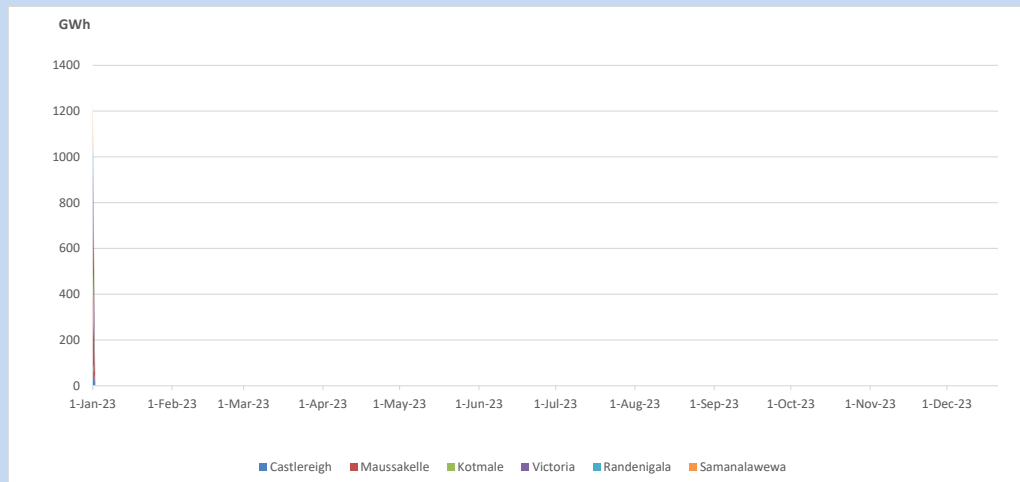


Total Reservoir Level            1254.8 GWh  
 % of Total capacity                98.1%

### 11. Comparison of Total Reservoir Storage Levels with Past Years

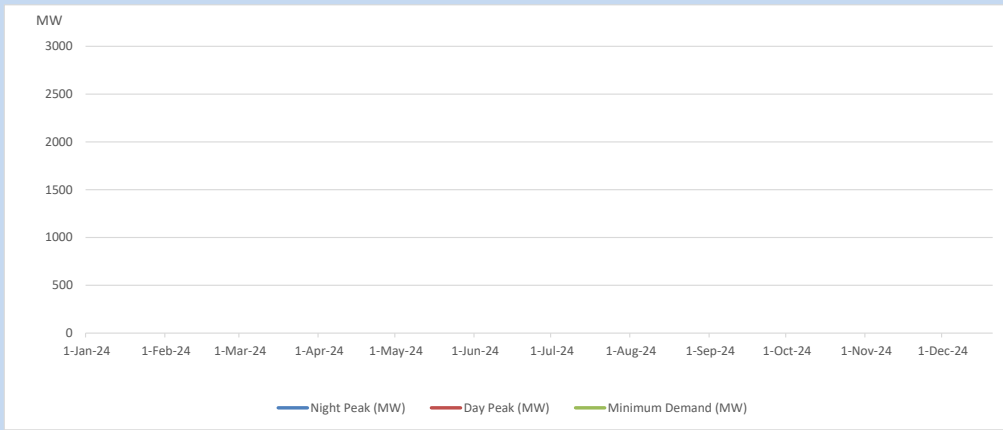


### 12. Variation of Major Hydro Reservoir Levels in the current year (GWh)





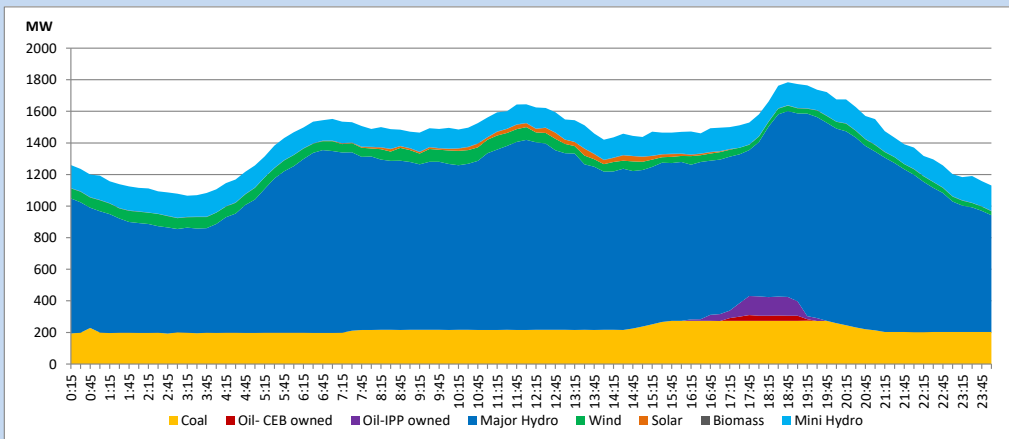
### 13. Variation of Demand during the current year



The above figures are excluding contribution from roof top solar, non telemetered solar and mini hydro plants

### 14. Daily Load Curve

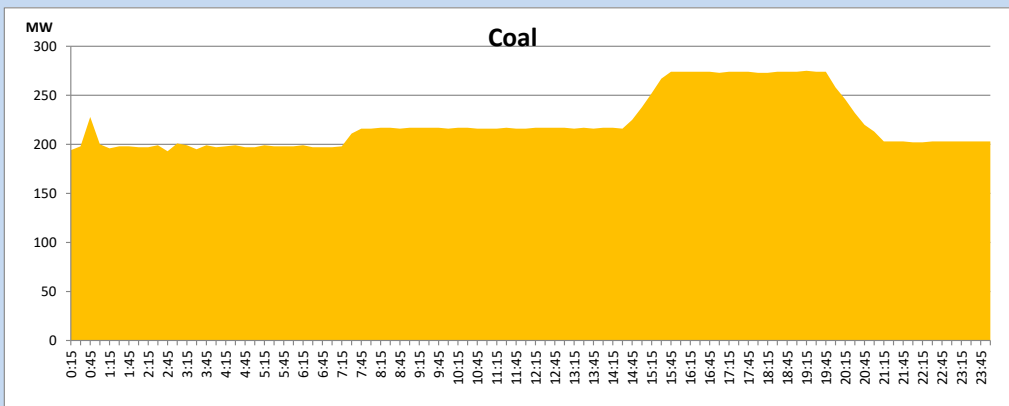
January 1, 2024



Solar and wind data is based on Telemetered Power Stations only

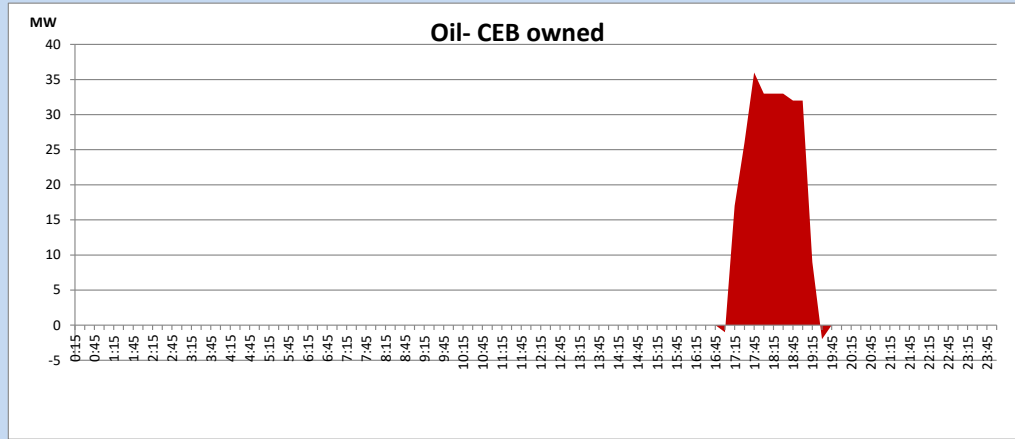
### Coal Generation during

January 1, 2024



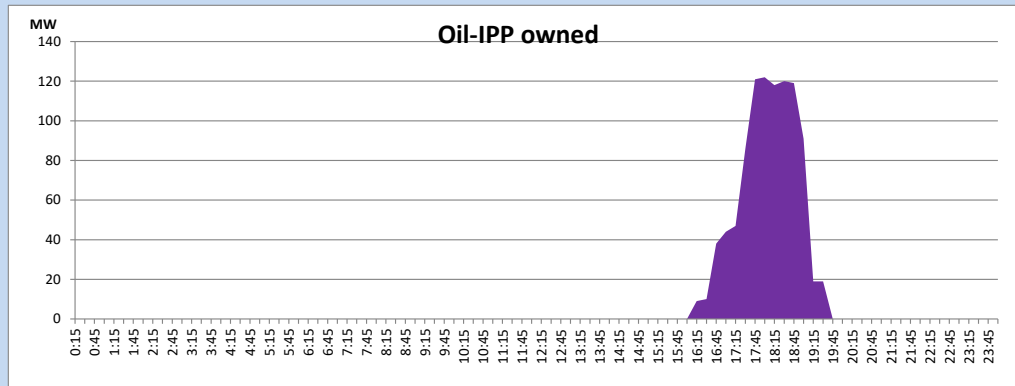
CEB Oil Plant Generation during

January 1, 2024



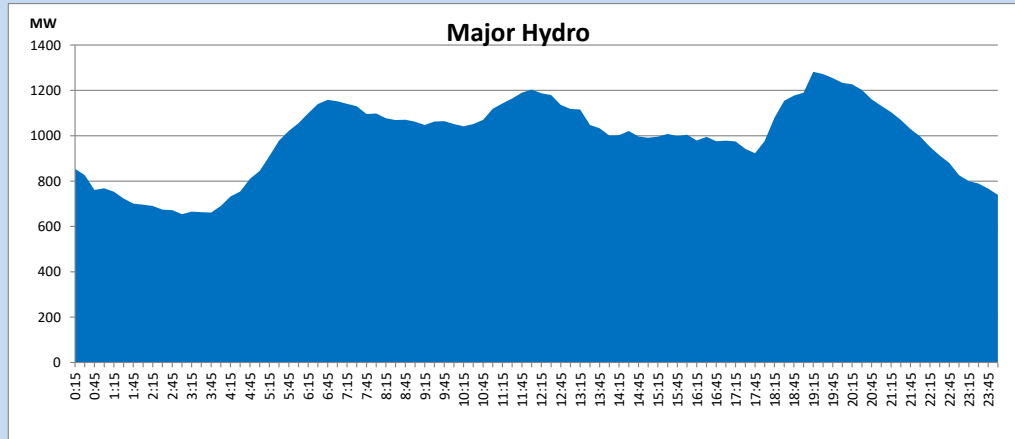
IPP Oil Plant Generation during

January 1, 2024



Major Hydro Generation during

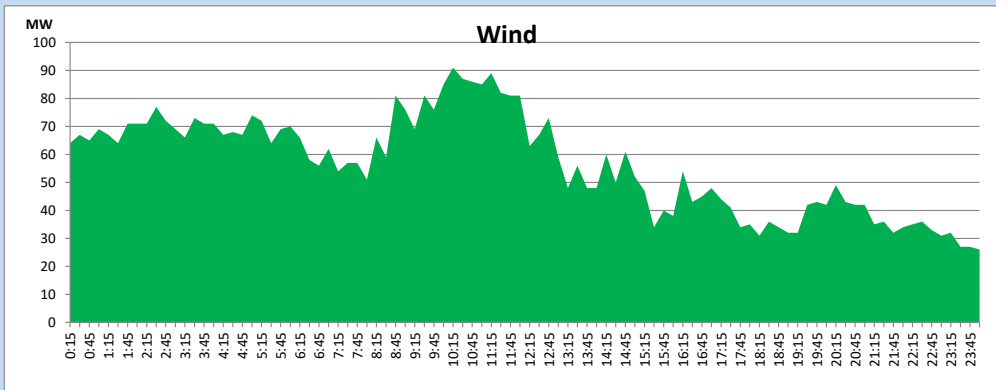
January 1, 2024



## Wind Generation during

January 1, 2024

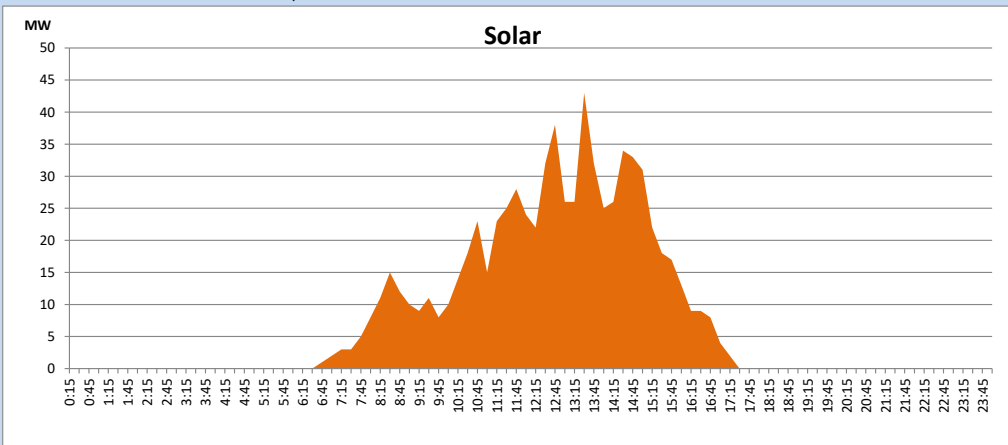
Based on Telemetered Power Stations only



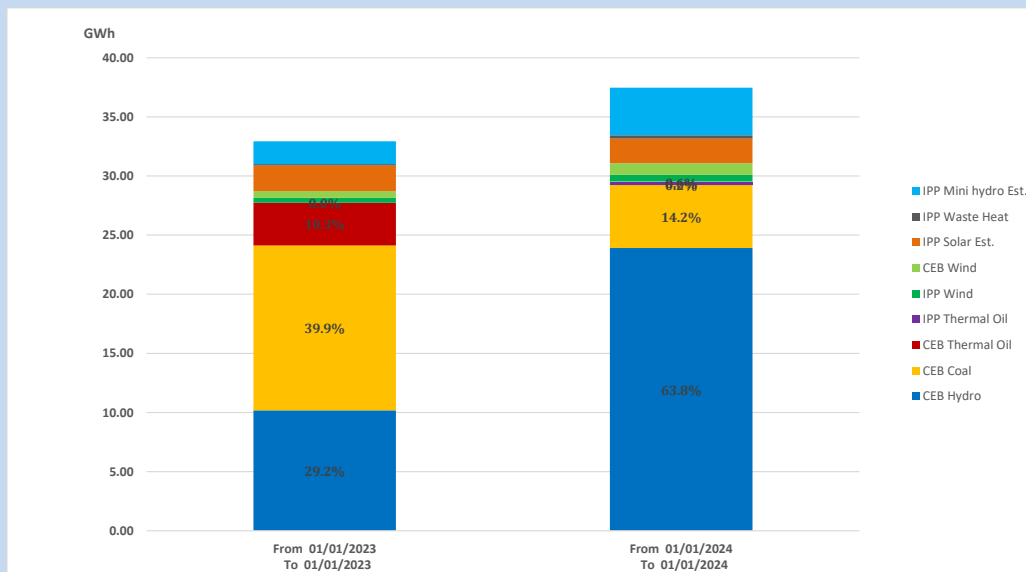
## Solar Generation during

January 1, 2024

Based on Telemetered Power Stations only



## 15. Cumulative Dispatch Comparison with Last Year



Cumulative dispatch  
 From 01/01/2023 To 01/01/2023  
 From 01/01/2024 To 01/01/2024

35 GWh  
 37 GWh

The above figures are including contribution from roof top solar, non telemetered solar and mini hydro plants (figures have been adjusted based on the data from the CEB monthly review reports.)

Thermal Plant Fuel types

Table 08

Power Station	Primary Fuel
CEB Thermal	
Sapugaskanda 1	Heavy Fuel
Sapugaskanda 2	Heavy Fuel
Kelanitissa Small Gas Turbines	Auto Diesel
GT 7 - Kelanitissa	Auto Diesel
Kelanitissa CCY	Naphtha or Diesel
Lakvijaya 1	Coal
Lakvijaya 2	Coal
Lakvijaya 3	Coal
Uthuru Janani	Heavy Fuel
Barge CEB	Heavy Fuel
KCCPS -2	Auto Diesel

Power Station	Primary Fuel
Private Thermal	
West Coast	Auto Diesel / Heavy Fuel
ACE Matara	Heavy Fuel
ACE Embilipitiya	Heavy Fuel

Major Incidents reported during the day

January 1, 2024

1) Bowatenna, Randenigala, and Victoria reservoirs spilling stopped at 4:00hrs, 9:27hrs, and 7:30hrs, respectively and spilling started again at 16:00hrs, 14:16hrs, and 14:13hrs, respectively. Bowatenna, Randenigala, and Victoria reservoirs spilling, continues to the present hour.

2) Rantambe pond spilling continues to the present hour.

3) Upper Kotmale pond spilling started at 1:58hrs (02/01/2024) and continues to the present hour.

4) Embilipitiya - Hambanthota 132kV cct 02 tripped & A/R at 6:23hrs (02/01/2024) due to operation of Differential protection.