

Generation and Reservoirs Statistics

January 9, 2024



PUBLIC UTILITIES COMMISSION OF SRI LANKA

1. Daily Generation Mix in MWh

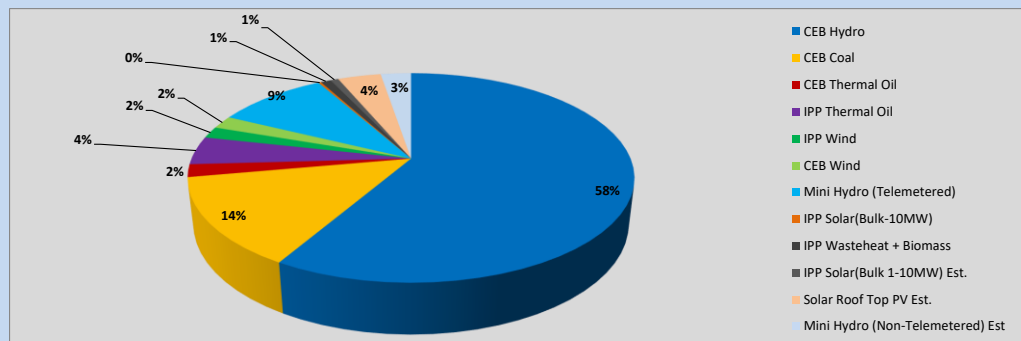


Table 01

	Generation (MWh)
CEB Hydro	25,785
CEB Coal	6,066
CEB Thermal Oil	863
IPP Thermal Oil	1,924
IPP Wind	788
CEB Wind	880
Mini Hydro (Telemetered)	4,225
IPP Solar (Bulk)	102
IPP Waste heat + Biomass	389
Total Generation (Excluding estimated figures)	41,022
* Estimated unserved energy	0
* Estimated Mini Hydro (Non telemetered)	1160
* Estimated IPP Solar PV (Bulk 1-10MW)	304
* Estimated Solar Roof Top PV	1650
Total Generation (Including estimated figures)	44,136

* Estimated figures of CEB generation report

Table 02

	Installed Capacity (MW)
CEB Hydro	1409
CEB Coal	810
CEB Thermal Oil	781
IPP Thermal Oil (West Coast, ACE Matara and ACE Embilipitiya)	387
IPP Wind	148
CEB Wind	100
Mini Hydro	422
IPP Waste heat + Biomass	50
IPP Solar	136
Rooftop Solar (Ordinary)	277
Rooftop Solar (LT Bulk)	263
Rooftop Solar (HT Bulk)	70

Data Source - Monthly Review Report [Aug-2023]

2. Cumulative Dispatch

Following data excludes the contribution from roof top solar, non telemetered solar and mini hydro plants

Table 03 - Current Month

Category	Dispatch (GWh)	
CEB Hydro	230	61.40%
CEB Coal	53	14.04%
CEB Thermal Oil	7	1.78%
IPP Thermal	13	3.55%
SPP Wind	4	1.06%
CEB Wind	5	1.47%
Mini Hydro *	40	10.75%
IPP Solar *	19	5.20%
IPP Waste heat + BMP	3	0.74%
Total	374	

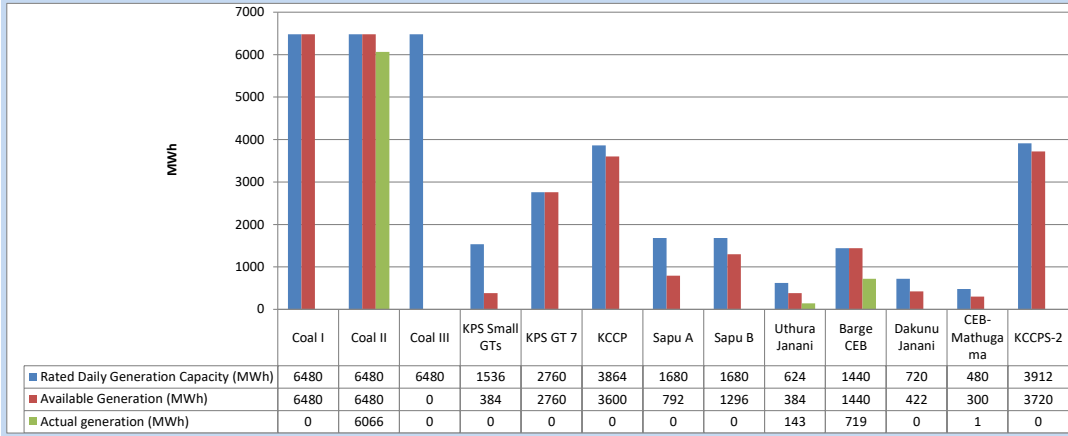
Table 04 - Current Year

Category	Dispatch (GWh)	
CEB Hydro	230	61.40%
CEB Coal	53	14.04%
CEB Thermal Oil	7	1.78%
IPP Thermal	13	3.55%
SPP Wind	4	1.06%
CEB Wind	5	1.47%
Mini Hydro *	40	10.75%
IPP Solar *	19	5.20%
IPP Waste heat	3	0.74%
Total	374	

*Including estimated contribution from non telemetered plants

3. CEB owned Thermal Plant Dispatch

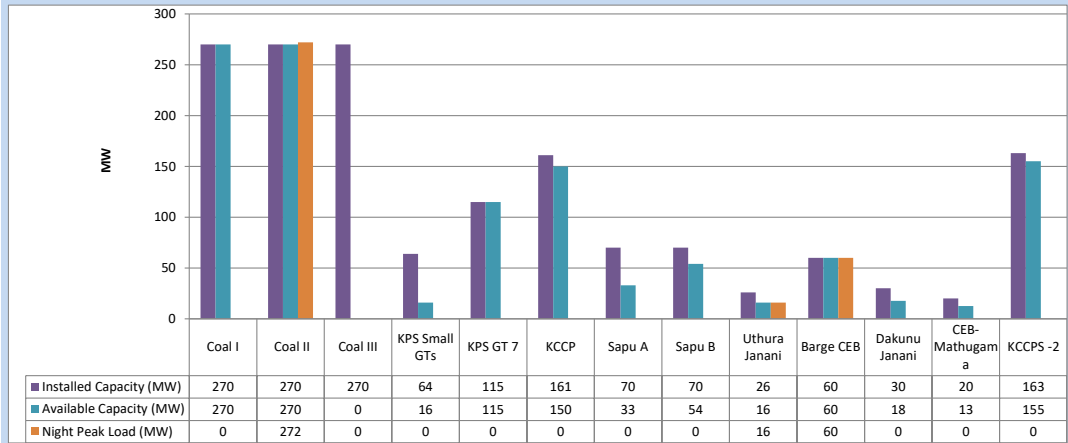
January 9, 2024



Available Generation is estimated based on plant availability at 6.00am on

January 10, 2024

4. CEB owned Thermal Plant Loading at the Night Peak

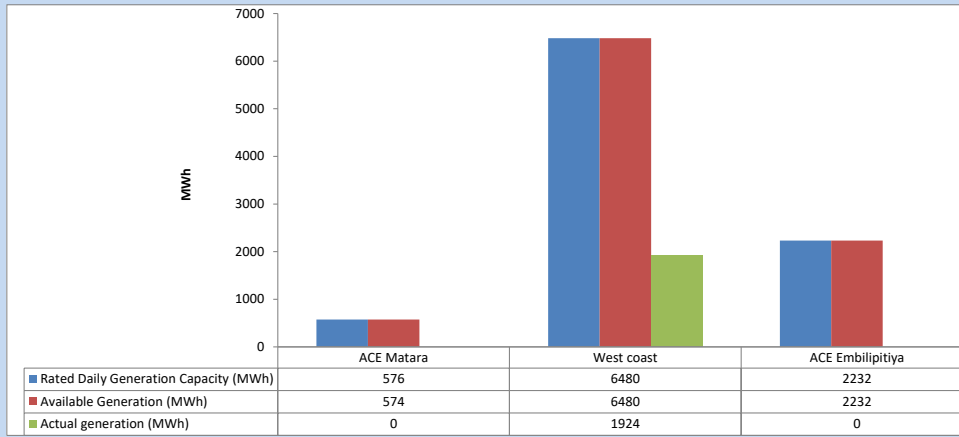


Plant availability is recorded at 6.00 am on

January 10, 2024

5. IPP owned Thermal Plant Dispatch

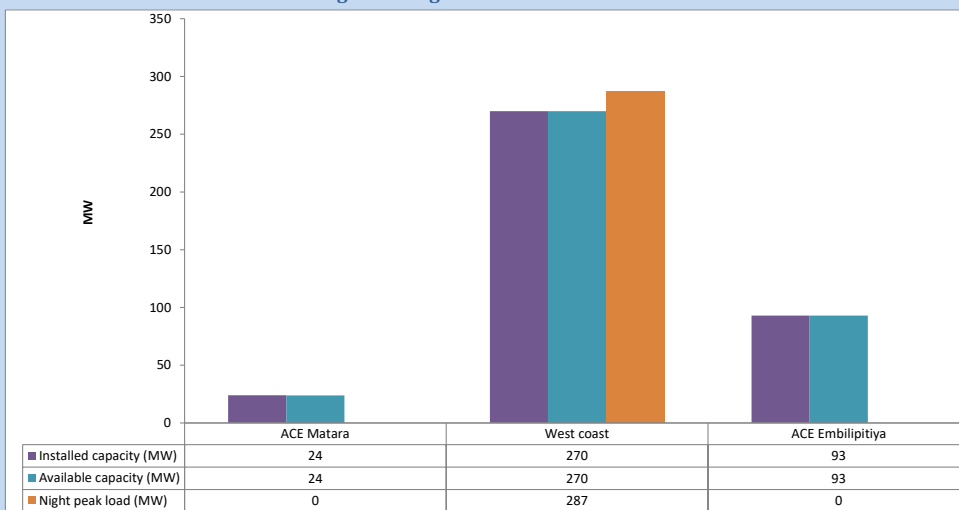
January 9, 2024



Available Generation is estimated based on plant availability at 6.00am on

January 10, 2024

6. IPP owned Thermal Plant Loading at the Night Peak

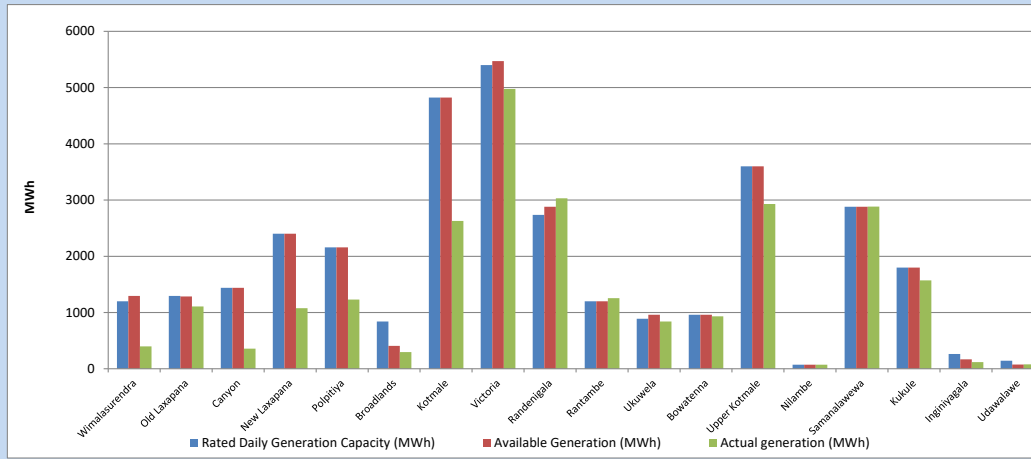


Plant availability is recorded at 6.00 am on

January 10, 2024

7. Major Hydro Plant Dispatch

January 9, 2024

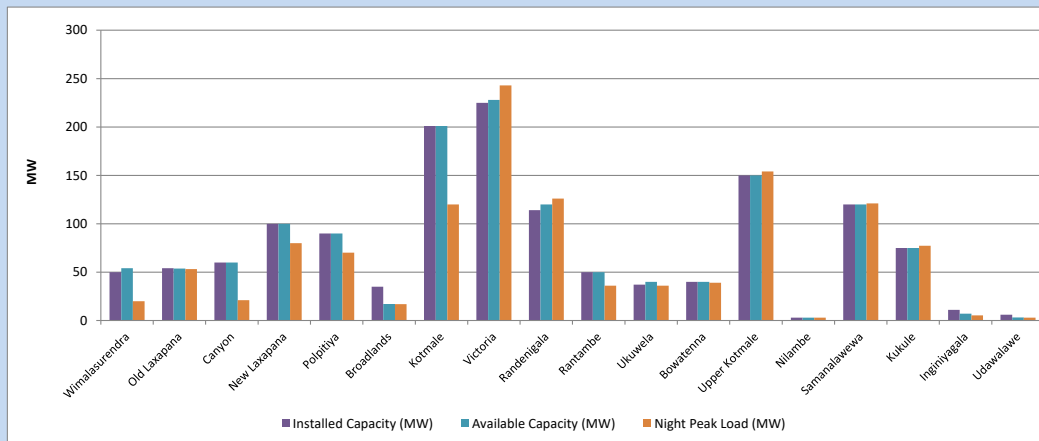


Available Generation is estimated based on plant availability at 6.00am on
Broadlands power plant is operating in the Commissioning Stage

January 10, 2024

8. Major Hydro Plant Loading at Night Peak

January 9, 2024



Plant availability is recorded at 6.00 am on
Broadlands power plant is operating in the Commissioning Stage

January 10, 2024

9. Summary of Major Plant performance

Table 05

Plant	Installed Capacity	Plant Availability	Night peak Load	Plant Dispatch
	(MW)	(MW)	(MW)	(MWh)
Wimalasurendra	50	54	20	398
Old Laxapana	54	54	53	1,107
Canyon	60	60	21	359
New Laxapana	100	100	80	1,077
Polpitiya	90	90	70	1,230
Broadlands	35	17	17	296
Kotmale	201	201	120	2,630
Victoria	225	228	243	4,975
Randenigala	114	120	126	3,031
Rantambe	50	50	36	1,255
Ukuwela	37	40	36	841
Bowatenna	40	40	39	933
Upper Kotmale	150	150	154	2,930
Nilambe	3	3	3	71
Samanalawewa	120	120	121	2,885
Kukule	75	75	77	1,571
Inginiyagala	11	7	5	118
Udawalawe	6	3	3	78
Puttalam Coal I	270	270	0	0
Puttalam Coal II	270	270	272	6,066
Puttalam Coal III	270	0	0	0
KPS Small GTs	64	16	0	0
KPS GT 7	115	115	0	0
KCCP	161	150	0	0
Sapugaskanda A	70	33	0	0
Sapugaskanda B	70	54	0	0
Uthura Janani	26	16	16	143
Barge CEB	60	60	60	719
CEB-Hambantota	30	18	0	0
CEB-Mathugama	20	13	0	1
ACE Matara	24	24	0	0
Asia Power	50	0	0	0
KCCPS -2	163	155	0	0
West Coast	270	270	287	1,924
Nothern Power	36	0	0	0
ACE Embilipitiya	93	93	0	0
Total	3,483	2,968	2,146	41,022

Plant availability is the availability recorded at 6 am on

January 10, 2024

10. Contribution to the Night Peak in MW

January 9, 2024

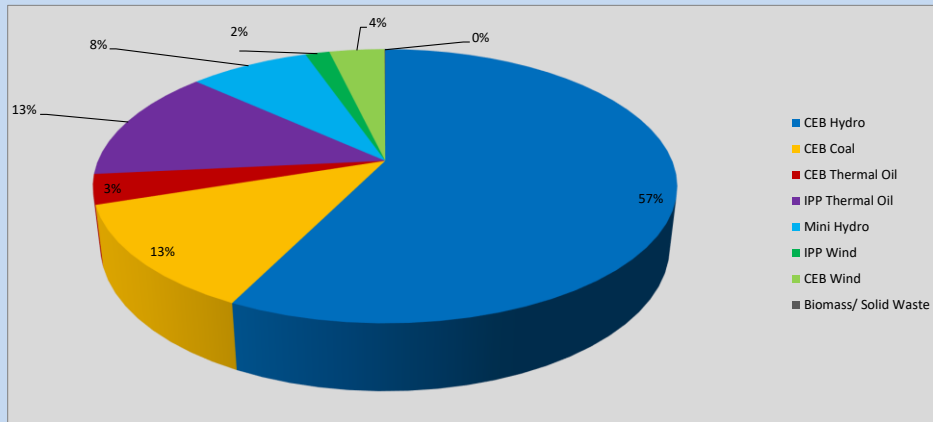


Table 06

CEB Hydro	1238	MW
CEB Coal	272	MW
CEB Thermal Oil	76	MW
IPP Thermal Oil	287	MW
Mini Hydro (Telemetered)	172	MW
IPP Wind	34.7	MW
CEB Wind	78.9	MW
Biomass/ Solid Waste	1	MW

Recorded Peak Demand Data

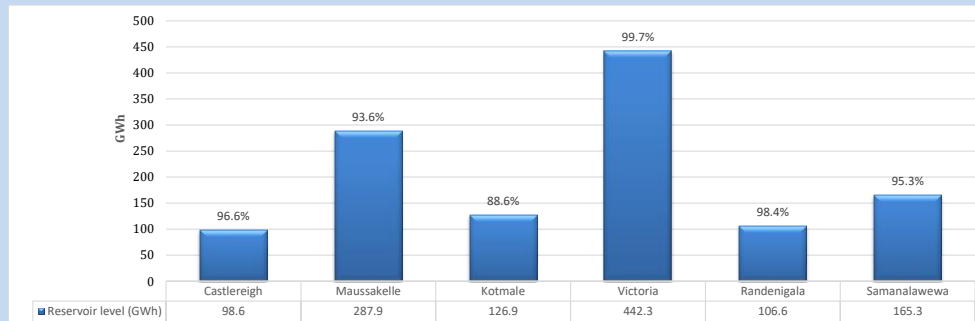
Table 07

Night Peak*	2,159	MW
Day Peak Maximum Demand	1,952	MW
Day Peak Minimum Demand	1,707	MW
Off Peak Minimum Demand	1,207	MW

Above figures are excluding contribution from roof top solar, non telemetered solar and mini hydro plants

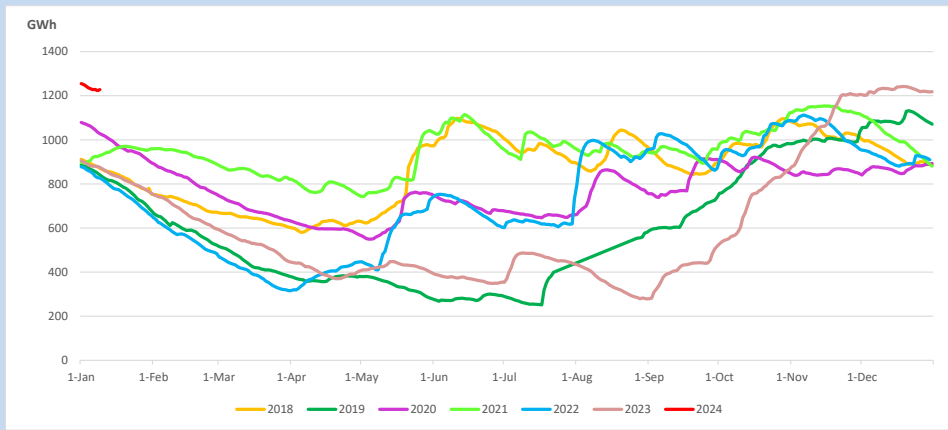
Reservoir Levels -

as at 06.00 Hr on January 10, 2024

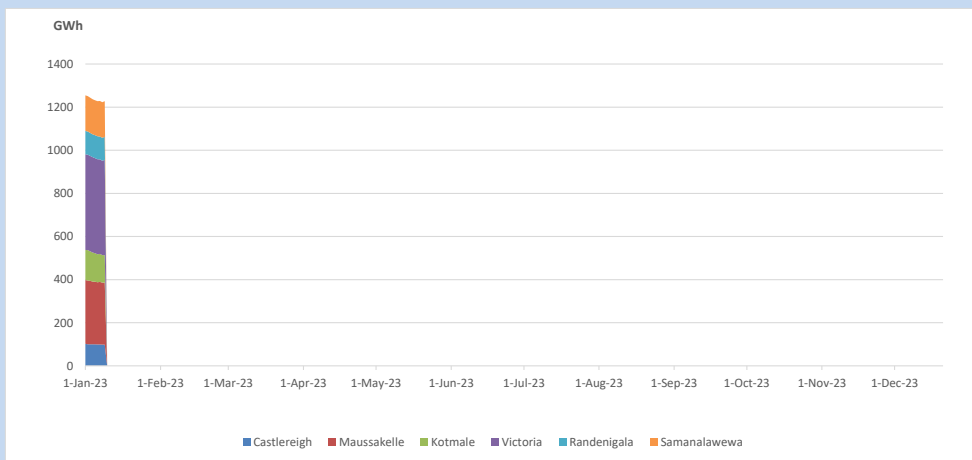


Total Reservoir Level 1227.6 GWh
% of Total capacity 96.0%

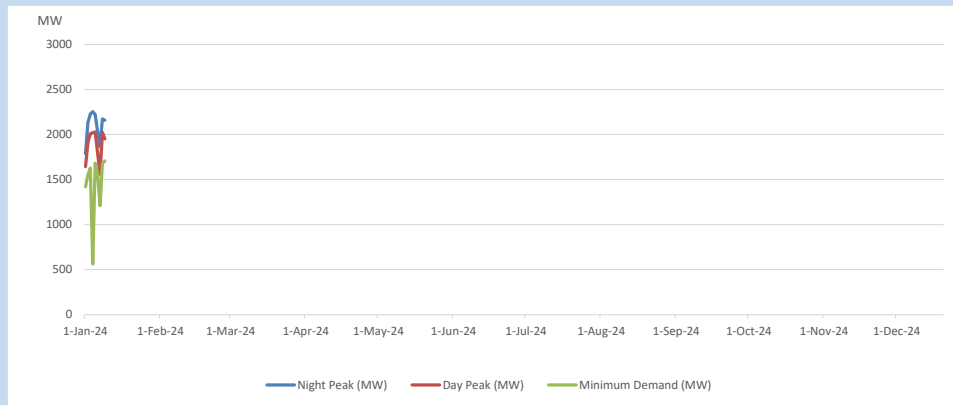
11. Comparison of Total Reservoir Storage Levels with Past Years



12. Variation of Major Hydro Reservoir Levels in the current year (GWh)



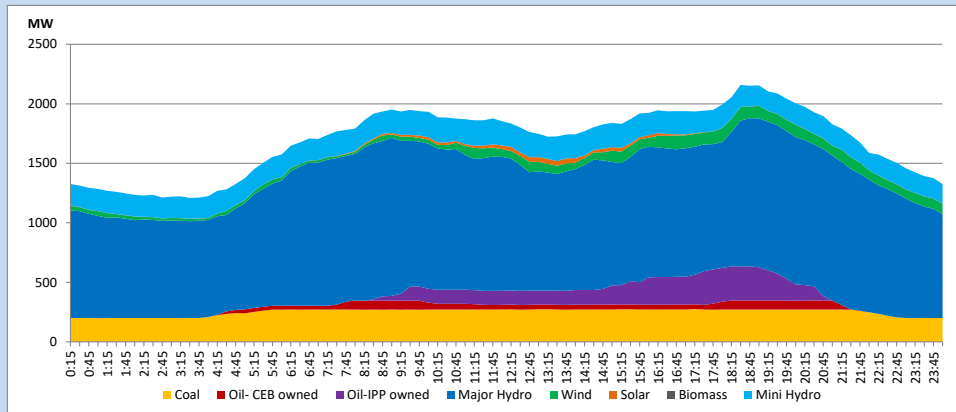
13. Variation of Demand during the current year



The above figures are excluding contribution from roof top solar, non telemetered solar and mini hydro plants

14. Daily Load Curve

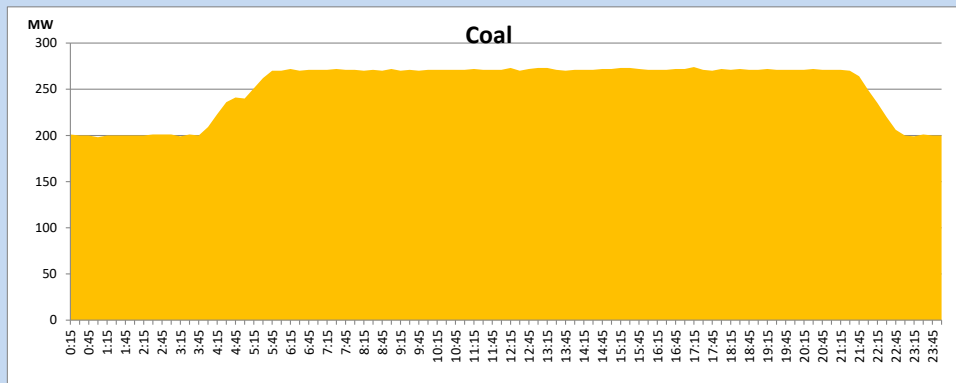
January 9, 2024



Solar and wind data is based on Telemetered Power Stations only

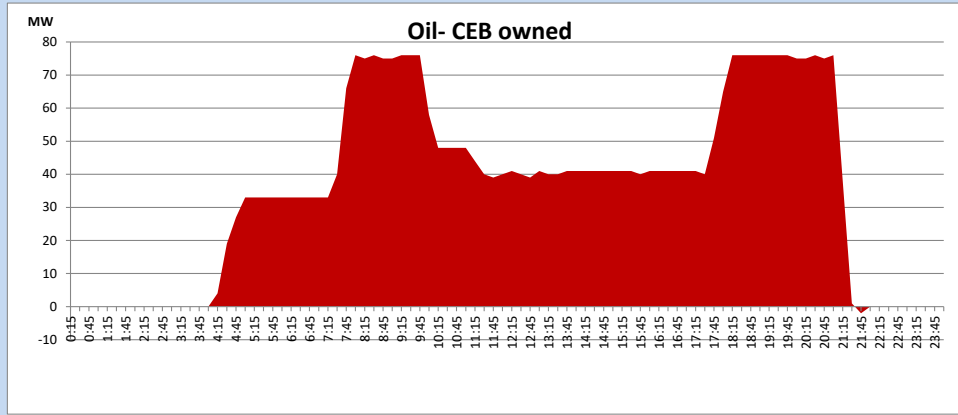
Coal Generation during

January 9, 2024



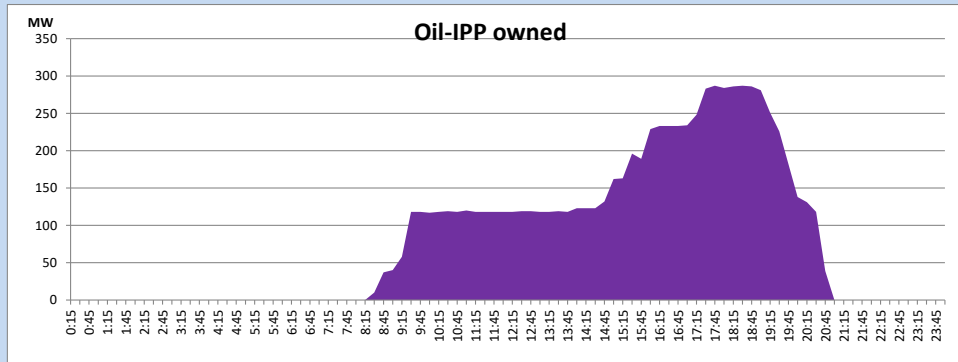
CEB Oil Plant Generation during

January 9, 2024



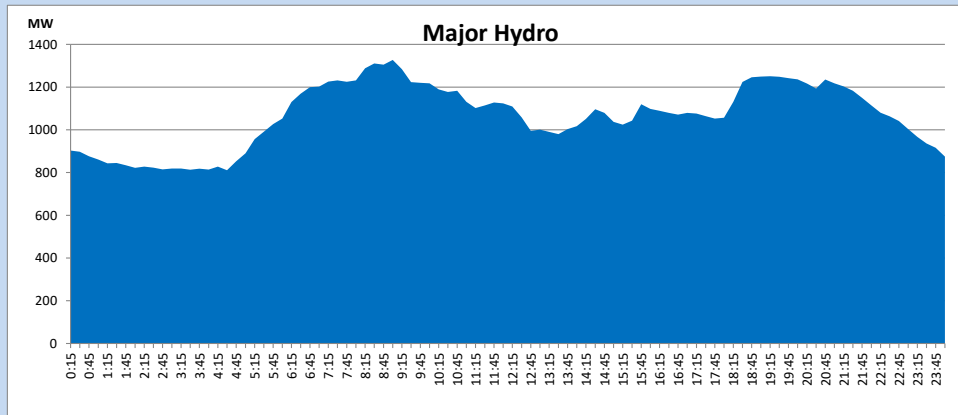
IPP Oil Plant Generation during

January 9, 2024



Major Hydro Generation during

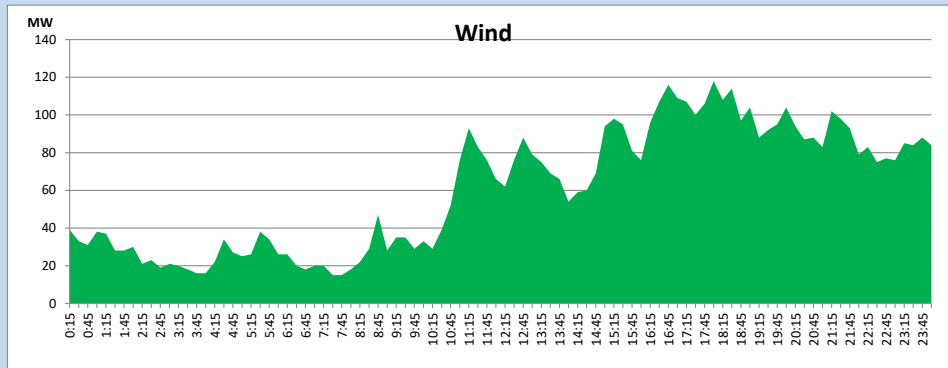
January 9, 2024



Wind Generation during

January 9, 2024

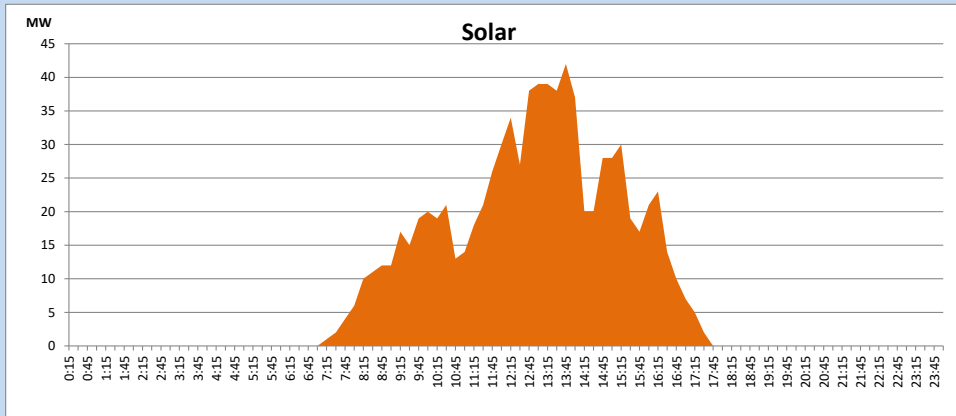
Based on Telemetered Power Stations only



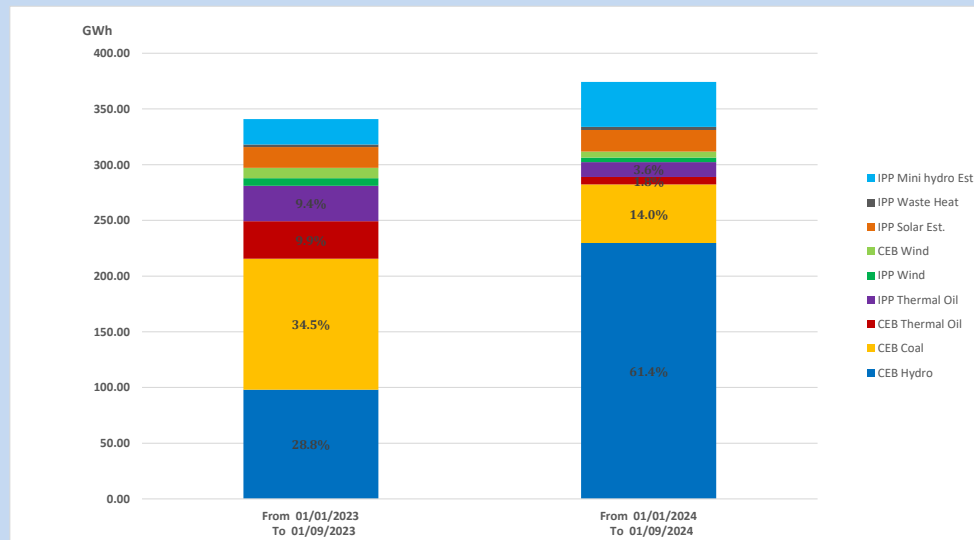
Solar Generation during

January 9, 2024

Based on Telemetered Power Stations only



15. Cumulative Dispatch Comparison with Last Year



Cumulative dispatch
From 01/01/2023 To 01/09/2023
From 01/01/2024 To 01/09/2024

341 GWh
374 GWh

The above figures are including contribution from roof top solar, non telemetered solar and mini hydro plants)

Thermal Plant Fuel types

Table 08

Power Station	Primary Fuel
CEB Thermal	
Sapugaskanda 1	Heavy Fuel
Sapugaskanda 2	Heavy Fuel
Kelanitissa Small Gas Turbines	Auto Diesel
GT 7 - Kelanitissa	Auto Diesel
Kelanitissa CCY	Naphtha or Diesel
Lakvijaya 1	Coal
Lakvijaya 2	Coal
Lakvijaya 3	Coal
Uthuru Janani	Heavy Fuel
Barge CEB	Heavy Fuel
KCCPS -2	Auto Diesel

Power Station	Primary Fuel
Private Thermal	
West Coast	Auto Diesel / Heavy Fuel
ACE Matara	Heavy Fuel
ACE Embilipitiya	Heavy Fuel

Major Incidents reported during the day

January 9, 2024

- 1) Randenigala reservoir spilling started at 16:06hrs and stopped at 18:48hrs. Bowatenna reservoir spilled intermittently and spilling stopped at 05:00hrs(10.01.2024).
- 2) Rantambe pond spilling continues to the present hour.