

Generation and Reservoirs Statistics

January 8, 2024



PUBLIC UTILITIES COMMISSION OF SRI LANKA

1. Daily Generation Mix in MWh

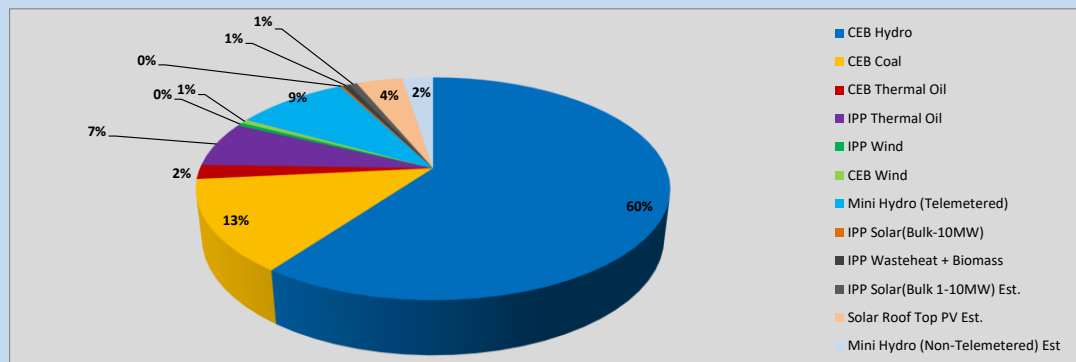


Table 01

	Generation (MWh)
CEB Hydro	26,422
CEB Coal	5,898
CEB Thermal Oil	905
IPP Thermal Oil	2,882
IPP Wind	221
CEB Wind	258
Mini Hydro (Telemetered)	4,041
IPP Solar (Bulk)	82
IPP Waste heat + Biomass	243
Total Generation (Excluding estimated figures)	40,952
* Estimated unserved energy	0
* Estimated Mini Hydro (Non telemetered)	1110
* Estimated IPP Solar PV (Bulk 1-10MW)	304
* Estimated Solar Roof Top PV	1650
Total Generation (Including estimated figures)	44,016

* Estimated figures of CEB generation report

Table 02

	Installed Capacity (MW)
CEB Hydro	1409
CEB Coal	810
CEB Thermal Oil	781
IPP Thermal Oil (West Coast, ACE Matara and ACE Embilipitiya)	387
IPP Wind	148
CEB Wind	100
Mini Hydro	422
IPP Waste heat + Biomass	50
IPP Solar	136
Rooftop Solar (Ordinary)	277
Rooftop Solar (LT Bulk)	263
Rooftop Solar (HT Bulk)	70

Data Source - Monthly Review Report [Aug-2023]

2. Cumulative Dispatch

Following data excludes the contribution from roof top solar, non telemetered solar and mini hydro plants

Table 03 - Current Month

Category	Dispatch (GWh)	
CEB Hydro	204	61.80%
CEB Coal	46	14.08%
CEB Thermal Oil	6	1.76%
IPP Thermal	11	3.44%
SPP Wind	3	0.97%
CEB Wind	5	1.40%
Mini Hydro *	35	10.56%
IPP Solar *	17	5.27%
IPP Waste heat + BMP	2	0.72%
Total	330	

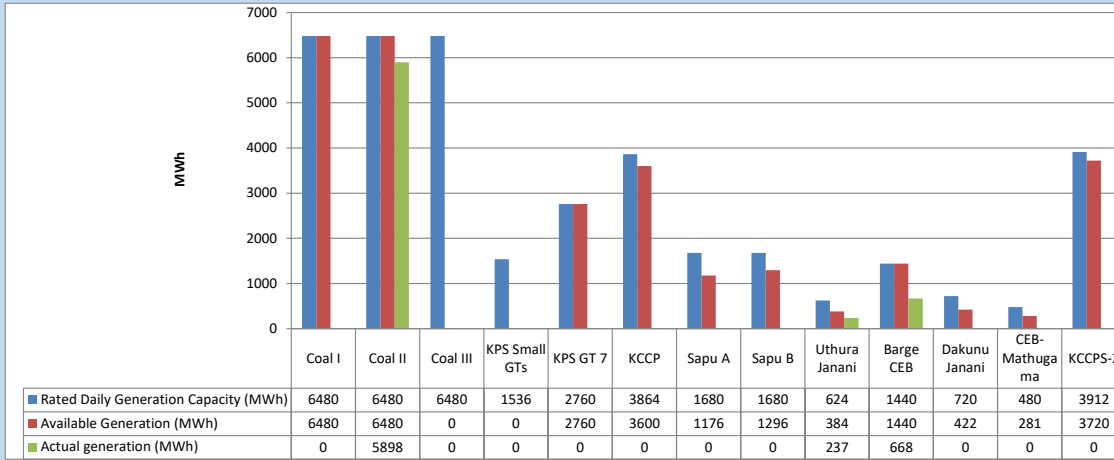
Table 04 - Current Year

Category	Dispatch (GWh)	
CEB Hydro	204	61.80%
CEB Coal	46	14.08%
CEB Thermal Oil	6	1.76%
IPP Thermal	11	3.44%
SPP Wind	3	0.97%
CEB Wind	5	1.40%
Mini Hydro *	35	10.56%
IPP Solar *	17	5.27%
IPP Waste heat	2	0.72%
Total	330	

*Including estimated contribution from non telemetered plants

3. CEB owned Thermal Plant Dispatch

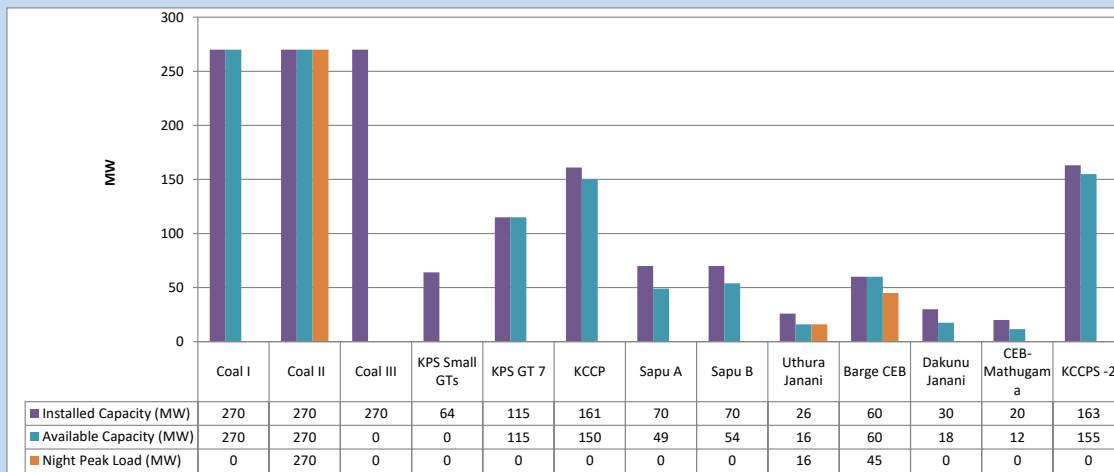
January 8, 2024



Available Generation is estimated based on plant availability at 6.00am on

January 9, 2024

4. CEB owned Thermal Plant Loading at the Night Peak

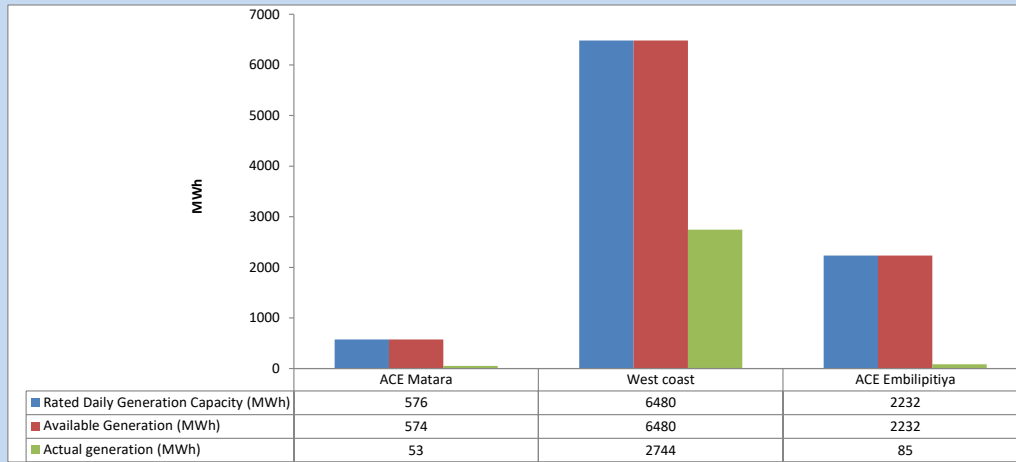


Plant availability is recorded at 6.00 am on

January 9, 2024

5. IPP owned Thermal Plant Dispatch

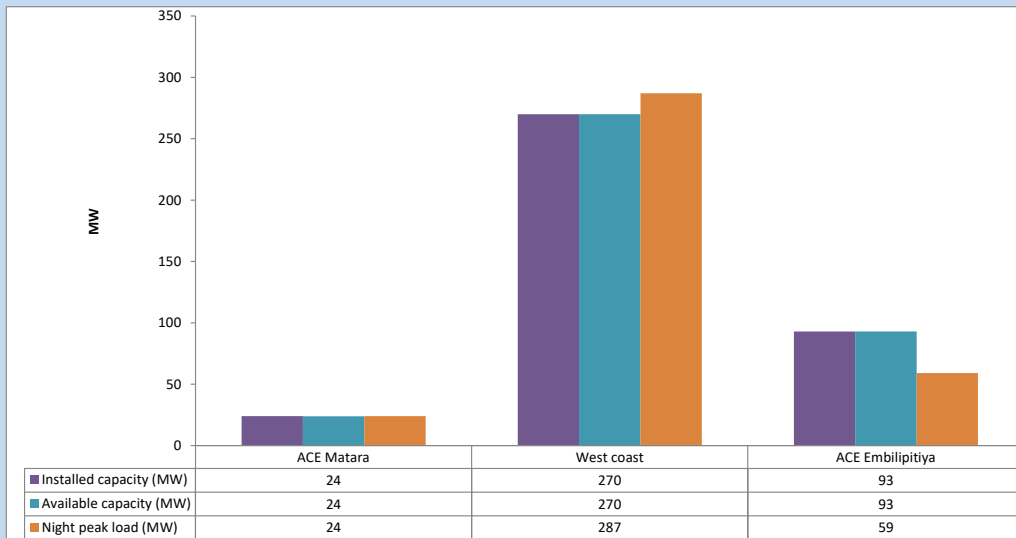
January 8, 2024



Available Generation is estimated based on plant availability at 6.00am on

January 9, 2024

6. IPP owned Thermal Plant Loading at the Night Peak

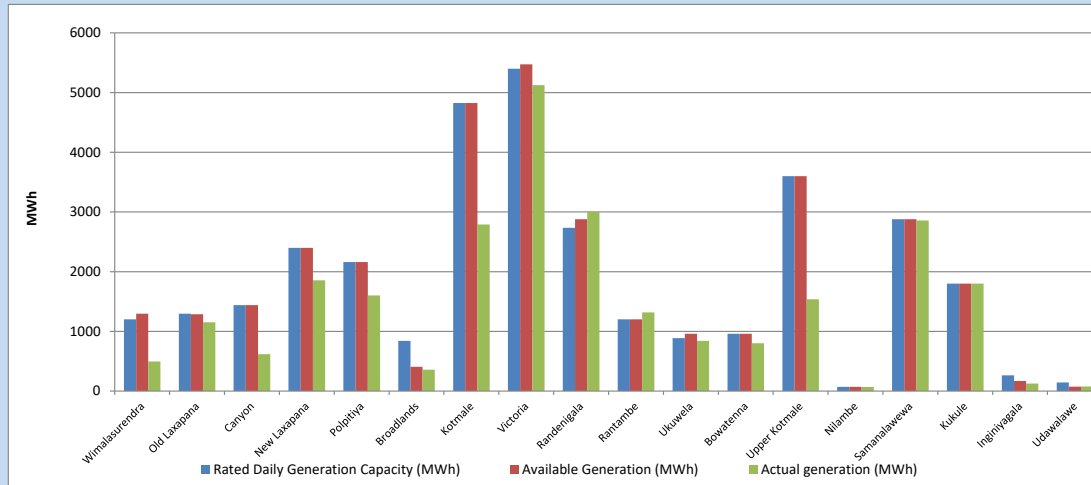


Plant availability is recorded at 6.00 am on

January 9, 2024

7. Major Hydro Plant Dispatch

January 8, 2024

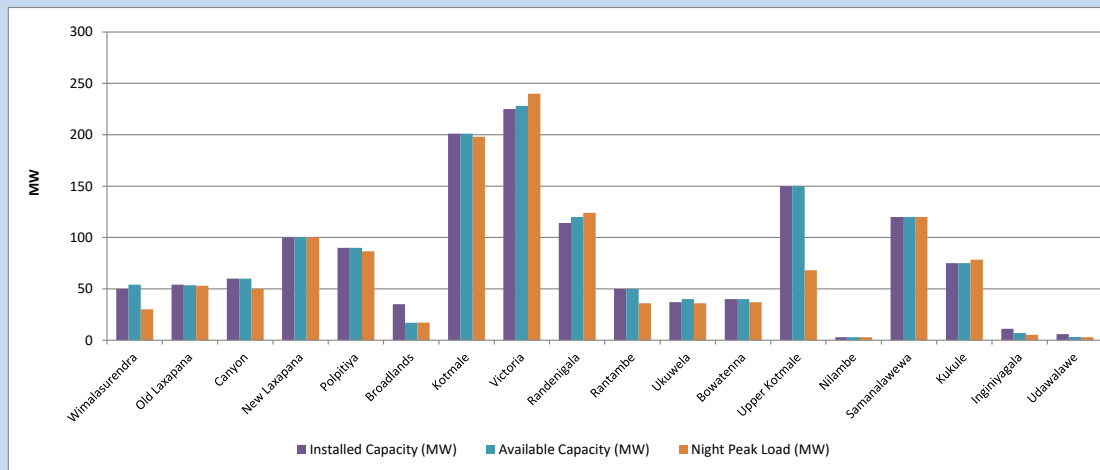


Available Generation is estimated based on plant availability at 6.00am on
Broadlands power plant is operating in the Commissioning Stage

January 9, 2024

8. Major Hydro Plant Loading at Night Peak

January 8, 2024



Plant availability is recorded at 6.00 am on
Broadlands power plant is operating in the Commissioning Stage

January 9, 2024

9. Summary of Major Plant performance

Table 05

Plant	Installed Capacity (MW)	Plant Availability (MW)	Night peak Load (MW)	Plant Dispatch (MWh)
Wimalasurendra	50	54	30	497
Old Laxapana	54	54	53	1,151
Canyon	60	60	50	619
New Laxapana	100	100	100	1,856
Polpitiya	90	90	87	1,600
Broadlands	35	17	17	357
Kotmale	201	201	198	2,790
Victoria	225	228	240	5,123
Randenigala	114	120	124	3,003
Rantambe	50	50	36	1,318
Ukuwela	37	40	36	842
Bowatenna	40	40	37	802
Upper Kotmale	150	150	68	1,537
Nilambe	3	3	3	68
Samanalawewa	120	120	120	2,856
Kukule	75	75	78	1,799
Inginiyagala	11	7	5	126
Udawalawe	6	3	3	78
Puttalam Coal I	270	270	0	0
Puttalam Coal II	270	270	270	5,898
Puttalam Coal III	270	0	0	0
KPS Small GTs	64	0	0	0
KPS GT 7	115	115	0	0
KCCP	161	150	0	0
Sapugaskanda A	70	49	0	0
Sapugaskanda B	70	54	0	0
Uthura Janani	26	16	16	237
Barge CEB	60	60	45	668
CEB-Hambantota	30	18	0	0
CEB-Mathugama	20	12	0	0
ACE Matara	24	24	24	53
Asia Power	50	0	0	0
KCCPS -2	163	155	0	0
West Coast	270	270	287	2,744
Nothern Power	36	0	0	0
ACE Embilipitiya	93	93	59	85
Total	3,483	2,967	2,154	40,952

Plant availability is the availability recorded at 6 am on

January 9, 2024

10. Contribution to the Night Peak in MW

January 8, 2024

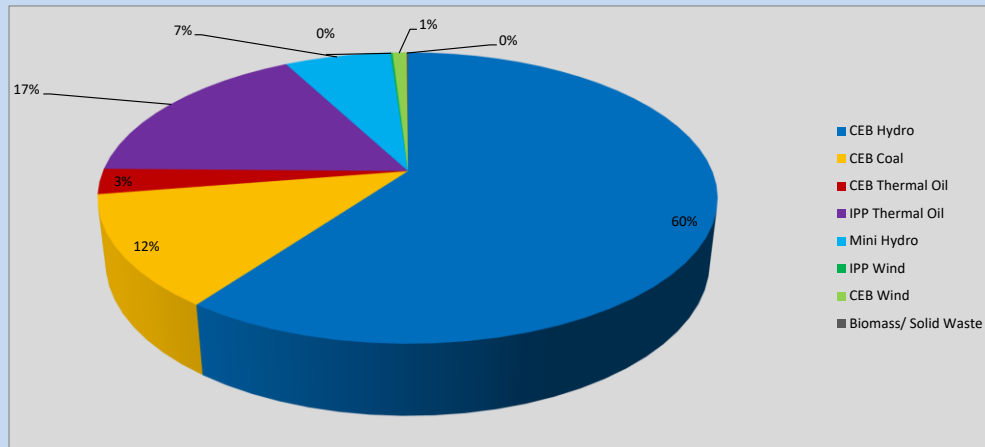


Table 06

CEB Hydro	1305	MW
CEB Coal	270	MW
CEB Thermal Oil	61	MW
IPP Thermal Oil	370	MW
Mini Hydro (Telemetered)	144	MW
IPP Wind	2.8	MW
CEB Wind	19	MW
Biomass/ Solid Waste	2	MW

Recorded Peak Demand Data

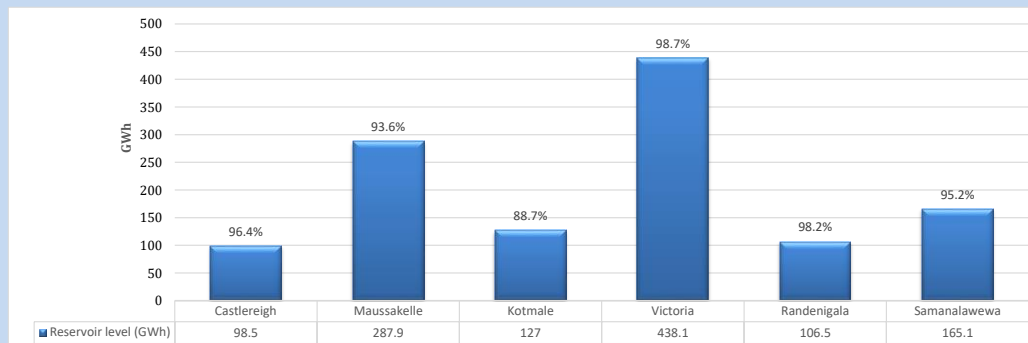
Table 07

Night Peak*	2,173	MW
Day Peak Maximum Demand	2,025	MW
Day Peak Minimum Demand	1,678	MW
Off Peak Minimum Demand	1,126	MW

Above figures are excluding contribution from roof top solar, non telemetered solar and mini hydro plants

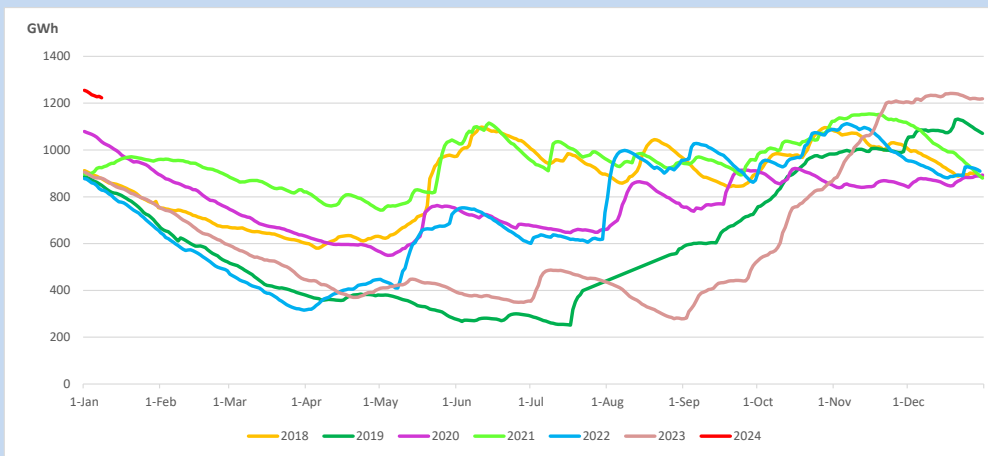
Reservoir Levels -

as at 06.00 Hr on January 9, 2024

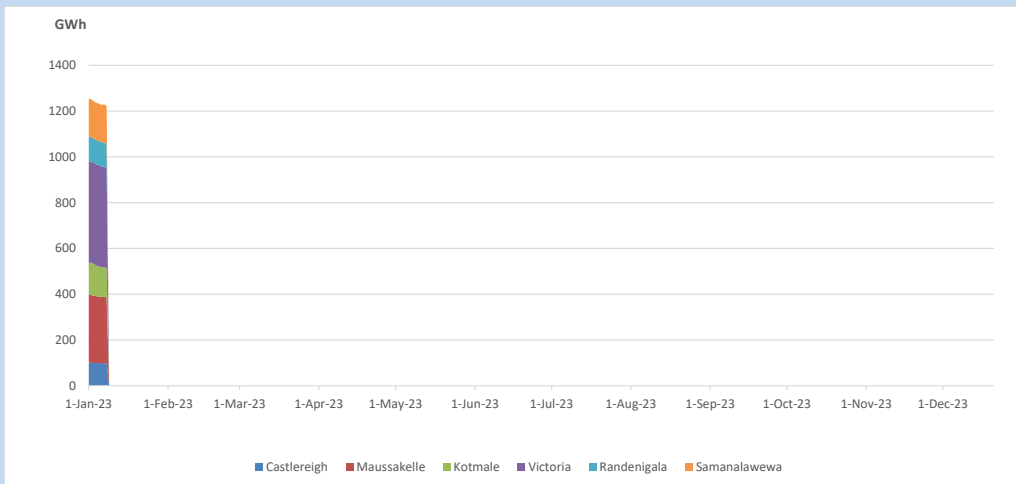


Total Reservoir Level 1223.1 GWh
 % of Total capacity 95.7%

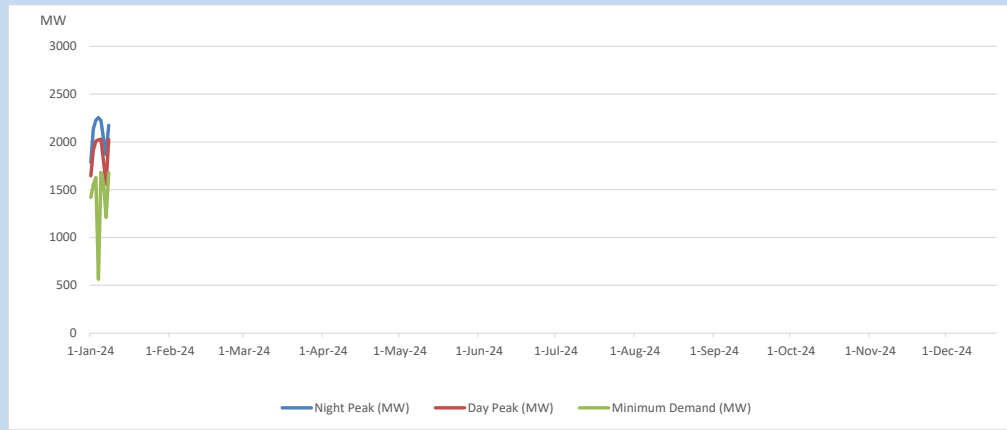
11. Comparison of Total Reservoir Storage Levels with Past Years



12. Variation of Major Hydro Reservoir Levels in the current year (GWh)



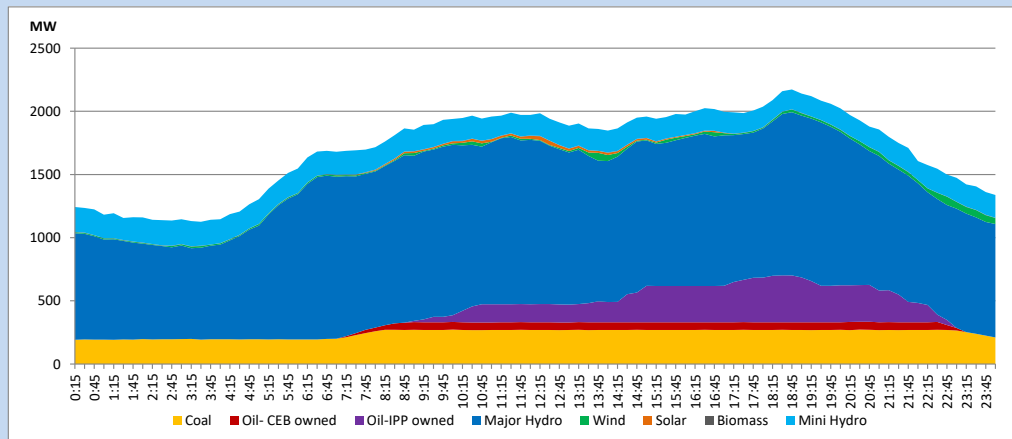
13. Variation of Demand during the current year



The above figures are excluding contribution from roof top solar, non telemetered solar and mini hydro plants

14. Daily Load Curve

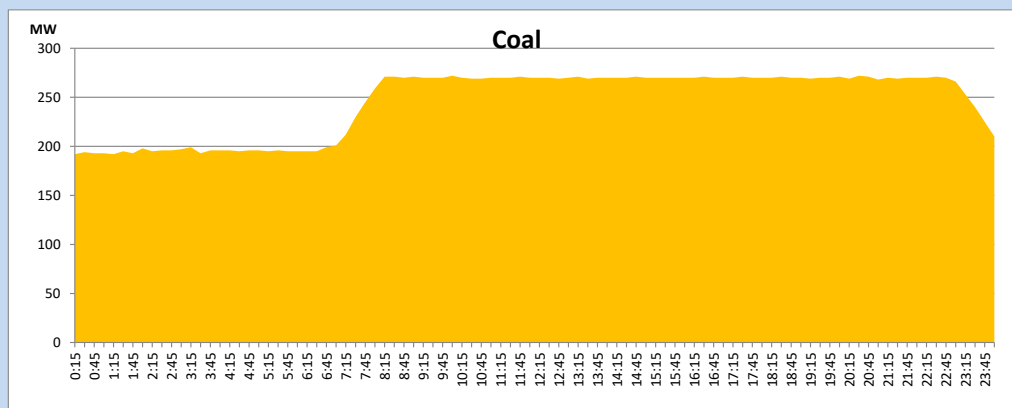
January 8, 2024



Solar and wind data is based on Telemetered Power Stations only

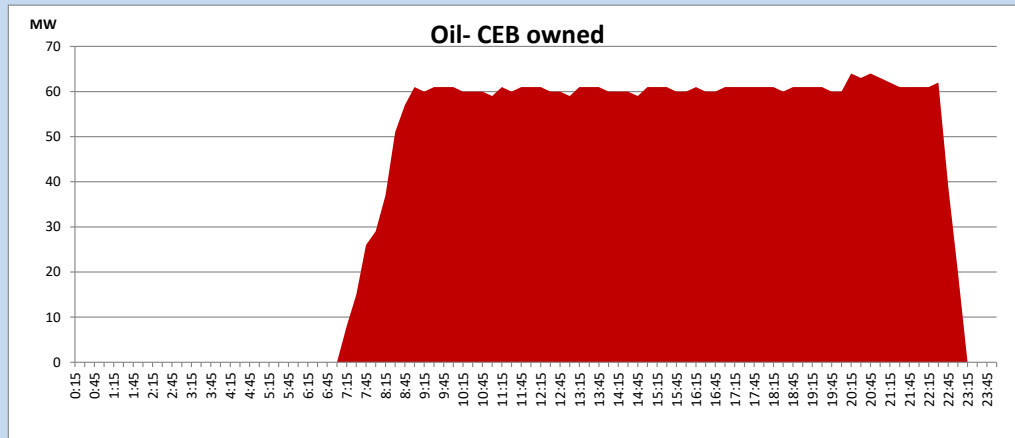
Coal Generation during

January 8, 2024



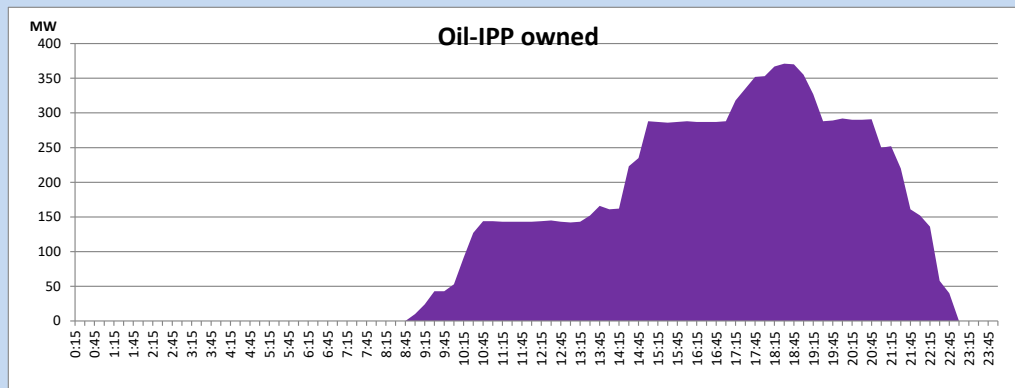
CEB Oil Plant Generation during

January 8, 2024



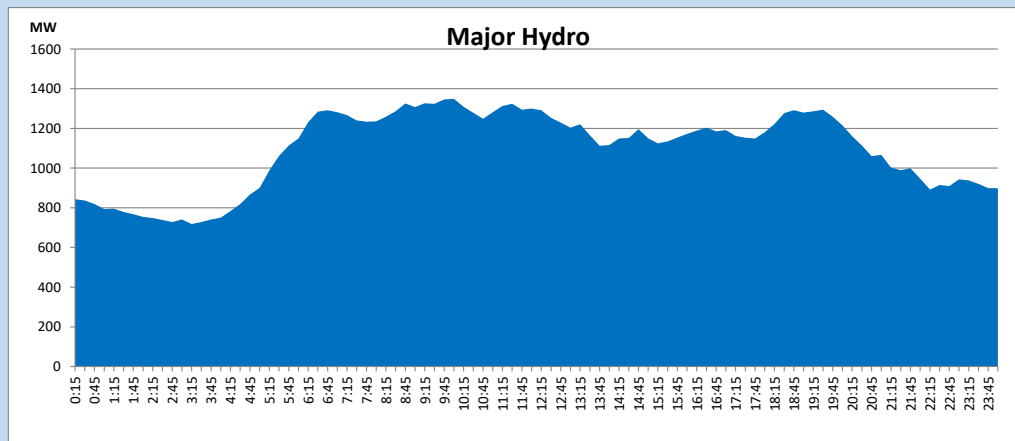
IPP Oil Plant Generation during

January 8, 2024



Major Hydro Generation during

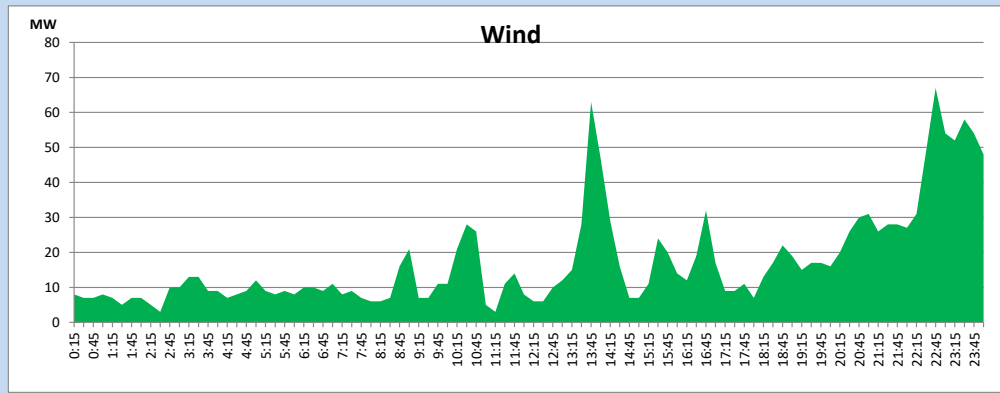
January 8, 2024



Wind Generation during

January 8, 2024

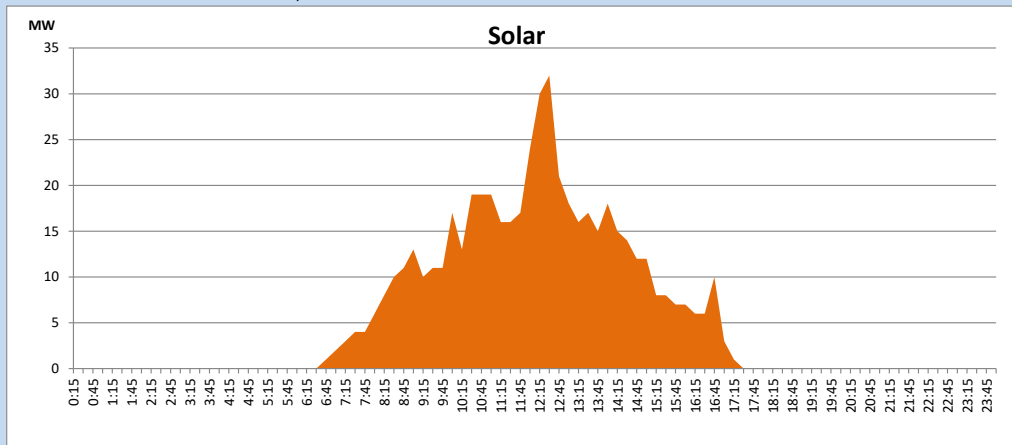
Based on Telemetered Power Stations only



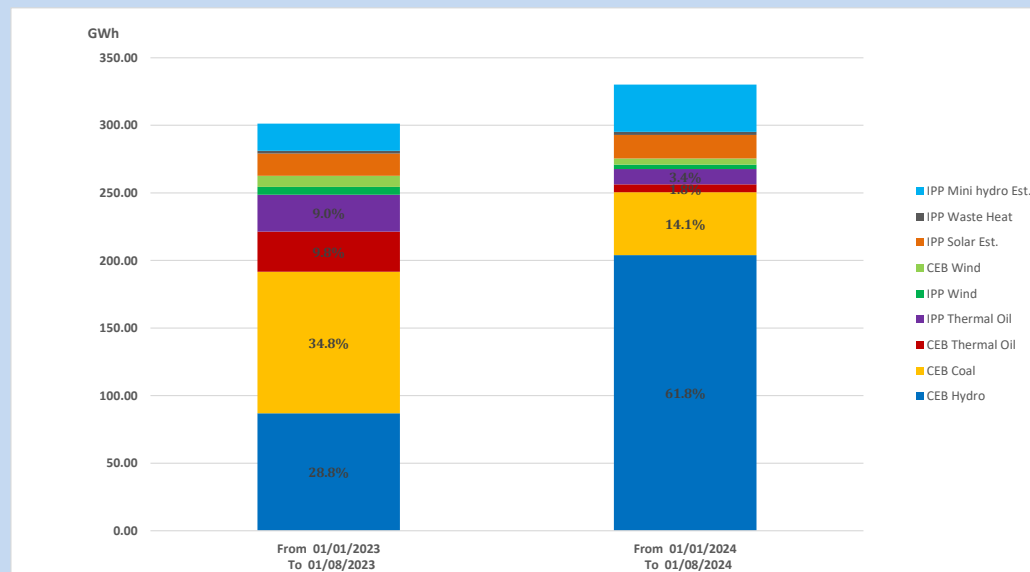
Solar Generation during

January 8, 2024

Based on Telemetered Power Stations only



15. Cumulative Dispatch Comparison with Last Year



Cumulative dispatch
 From 01/01/2023 To 01/08/2023
 From 01/01/2024 To 01/08/2024

301 GWh
 330 GWh

The above figures are including contribution from roof top solar, non telemetered solar and mini hydro plants (figures have been adjusted based on the data from the CEB monthly review reports.)

Thermal Plant Fuel types

Table 08

Power Station	Primary Fuel
CEB Thermal	
Sapugaskanda 1	Heavy Fuel
Sapugaskanda 2	Heavy Fuel
Kelanitissa Small Gas Turbines	Auto Diesel
GT 7 - Kelanitissa	Auto Diesel
Kelanitissa CCY	Naphtha or Diesel
Lakvijaya 1	Coal
Lakvijaya 2	Coal
Lakvijaya 3	Coal
Uthuru Janani	Heavy Fuel
Barge CEB	Heavy Fuel
KCCPS -2	Auto Diesel

Power Station	Primary Fuel
Private Thermal	
West Coast	Auto Diesel / Heavy Fuel
ACE Matara	Heavy Fuel
ACE Embilipitiya	Heavy Fuel

Major Incidents reported during the day

January 8, 2024

- 1) Kukule both generators tripped at 07:02hrs rejecting 78MW from the system due to de watering pump failure. Subsequently , Randenigala generator 01 deloaded to 24MW from full load due to this disturbance . Kukule both generators resumed generation at 08:00hrs.
- 2) Chunnakam - Kilinochchi 132kV cct 01 which was tripped on 07.01.2024 was normalized at 16:36 hrs.
- 3) Rantambe pond spilled intermittently and the spilling continues to the present hour.