

# Generation and Reservoirs Statistics

January 4, 2024



**PUBLIC UTILITIES COMMISSION OF SRI LANKA**

## 1. Daily Generation Mix in MWh

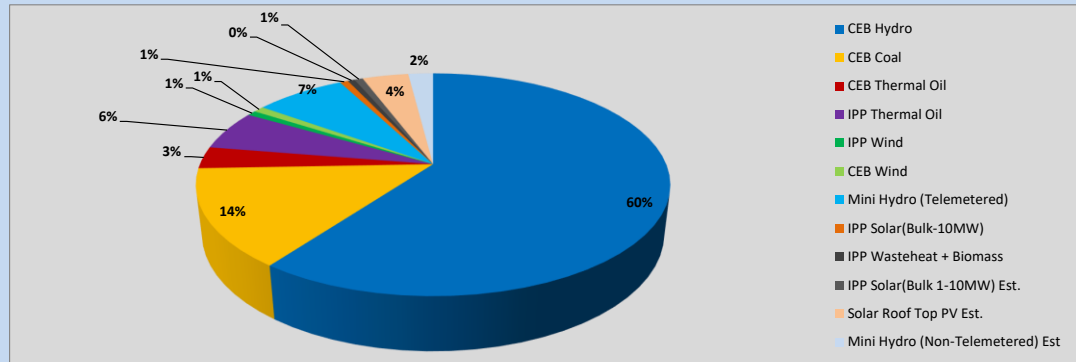


Table 01

	Generation (MWh)
CEB Hydro	26,411
CEB Coal	6,252
CEB Thermal Oil	1,391
IPP Thermal Oil	2,528
IPP Wind	320
CEB Wind	383
Mini Hydro (Telemetered)	3,228
IPP Solar (Bulk)	297
IPP Waste heat + Biomass	247
<b>Total Generation (Excluding estimated figures)</b>	<b>41,057</b>
* Estimated unserved energy	0
* Estimated Mini Hydro (Non telemetered)	886
* Estimated IPP Solar PV (Bulk 1-10MW)	304
* Estimated Solar Roof Top PV	1650
<b>Total Generation (Including estimated figures)</b>	<b>43,897</b>

\* Estimated figures of CEB generation report

Table 02

	Installed Capacity (MW)
CEB Hydro	1409
CEB Coal	810
CEB Thermal Oil	781
IPP Thermal Oil (West Coast, ACE Matara and ACE Embilipitiya)	387
IPP Wind	148
CEB Wind	100
Mini Hydro	422
IPP Waste heat + Biomass	50
IPP Solar	136
Rooftop Solar (Ordinary)	277
Rooftop Solar (LT Bulk)	263
Rooftop Solar (HT Bulk)	70

Data Source - Monthly Review Report [Aug-2023]

## 2. Cumulative Dispatch

Following data excludes the contribution from roof top solar, non telemetered solar and mini hydro plants

Table 03 - Current Month

Category	Dispatch (GWh)	
CEB Hydro	101	61.40%
CEB Coal	24	14.25%
CEB Thermal Oil	3	1.88%
IPP Thermal	6	3.43%
SPP Wind	2	1.25%
CEB Wind	3	1.79%
Mini Hydro *	17	10.17%
IPP Solar *	9	5.28%
IPP Waste heat + BMP	1	0.54%
<b>Total</b>	<b>165</b>	

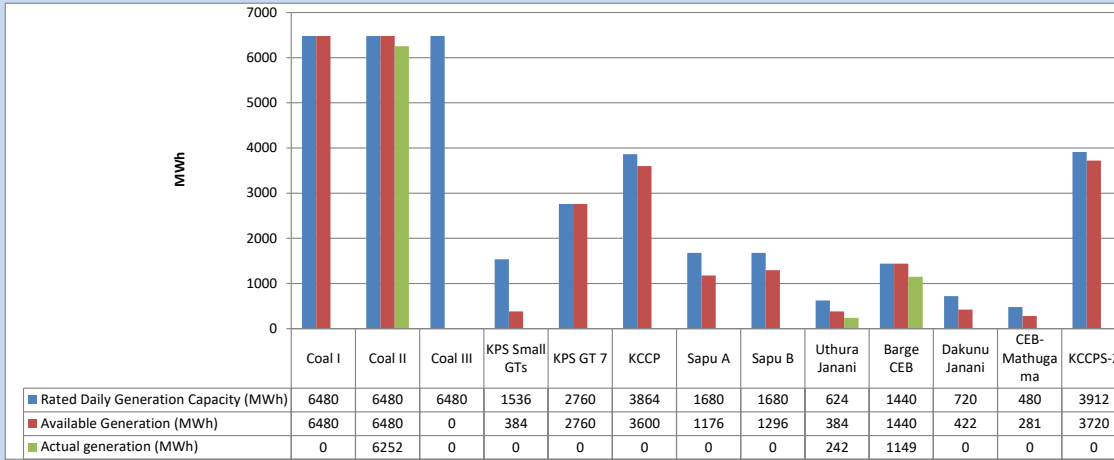
Table 04 - Current Year

Category	Dispatch (GWh)	
CEB Hydro	101	61.40%
CEB Coal	24	14.25%
CEB Thermal Oil	3	1.88%
IPP Thermal	6	3.43%
SPP Wind	2	1.25%
CEB Wind	3	1.79%
Mini Hydro *	17	10.17%
IPP Solar *	9	5.28%
IPP Waste heat	1	0.54%
<b>Total</b>	<b>165</b>	

\*Including estimated contribution from non telemetered plants

### 3. CEB owned Thermal Plant Dispatch

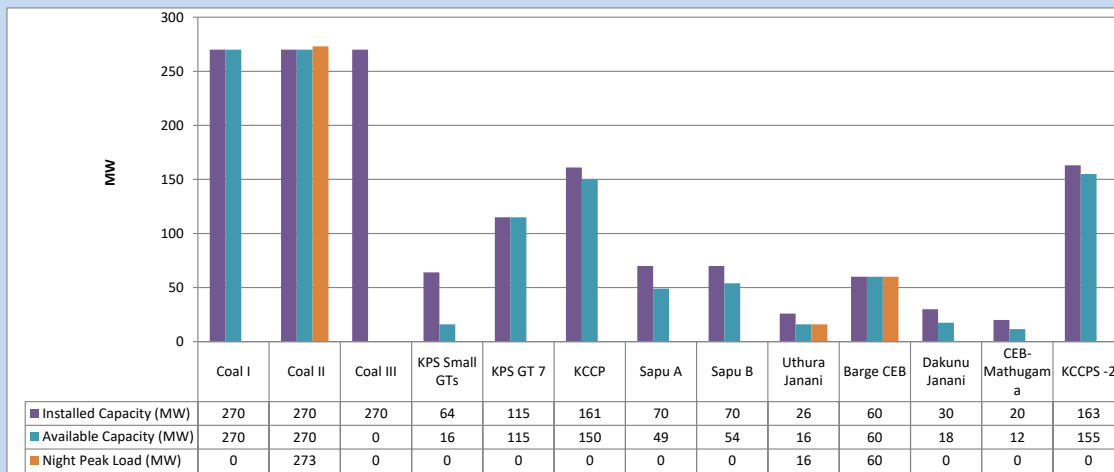
January 4, 2024



Available Generation is estimated based on plant availability at 6.00am on

January 5, 2024

### 4. CEB owned Thermal Plant Loading at the Night Peak

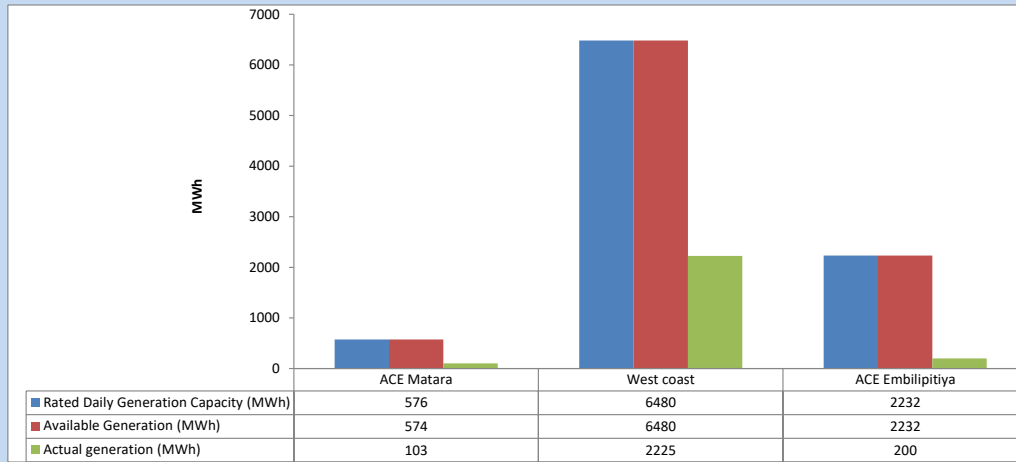


Plant availability is recorded at 6.00 am on

January 5, 2024

## 5. IPP owned Thermal Plant Dispatch

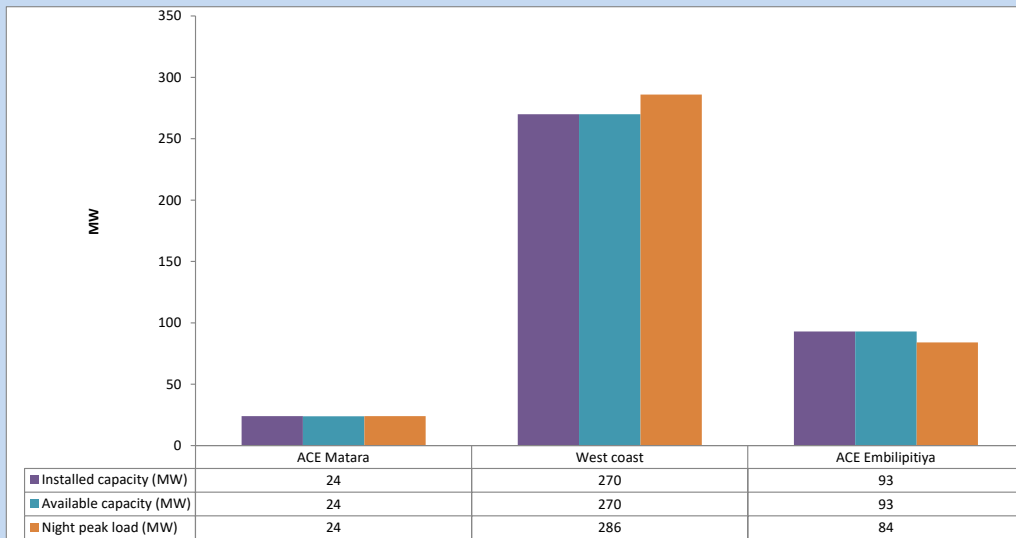
January 4, 2024



Available Generation is estimated based on plant availability at 6.00am on

January 5, 2024

## 6. IPP owned Thermal Plant Loading at the Night Peak

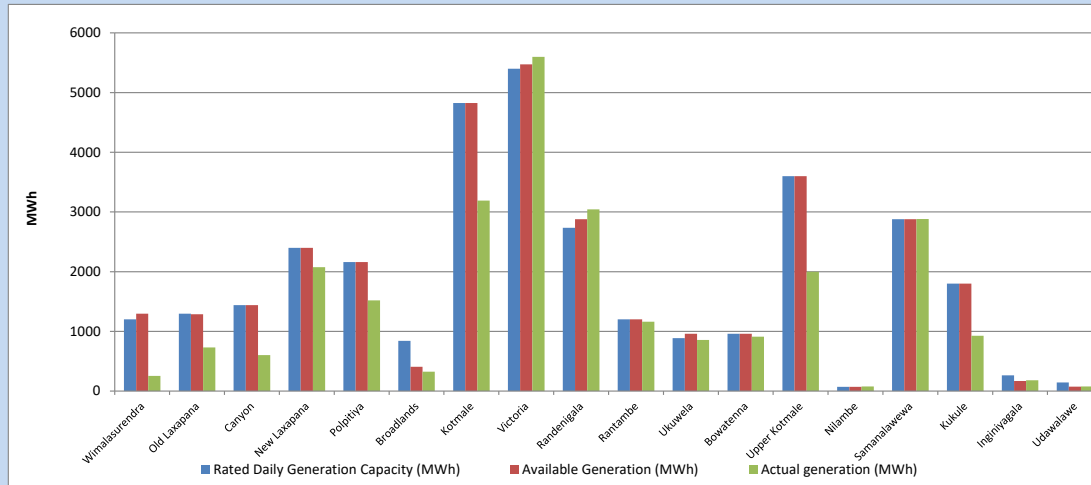


Plant availability is recorded at 6.00 am on

January 5, 2024

### 7. Major Hydro Plant Dispatch

January 4, 2024

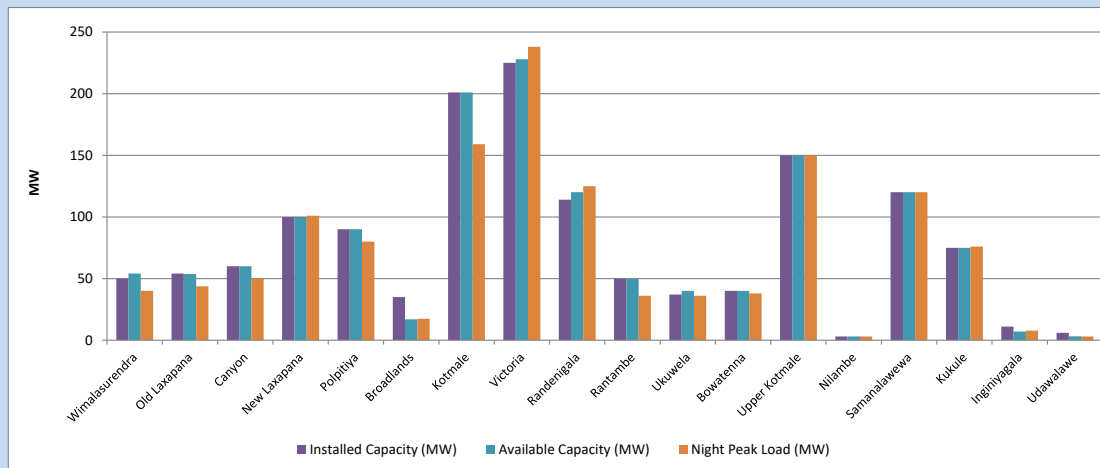


Available Generation is estimated based on plant availability at 6.00am on  
Broadlands power plant is operating in the Commissioning Stage

January 5, 2024

### 8. Major Hydro Plant Loading at Night Peak

January 4, 2024



Plant availability is recorded at 6.00 am on  
Broadlands power plant is operating in the Commissioning Stage

January 5, 2024

## 9. Summary of Major Plant performance

**Table 05**

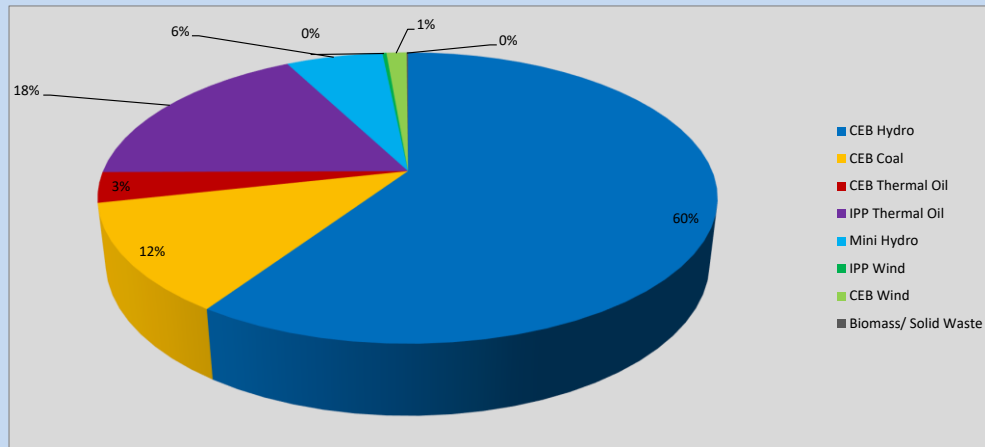
Plant	Installed Capacity (MW)	Plant Availability (MW)	Night peak Load (MW)	Plant Dispatch (MWh)
Wimalasurendra	50	54	40	255
Old Laxapana	54	54	44	731
Canyon	60	60	50	603
New Laxapana	100	100	101	2,076
Polpitiya	90	90	80	1,520
Broadlands	35	17	17	324
Kotmale	201	201	159	3,190
Victoria	225	228	238	5,598
Randenigala	114	120	125	3,044
Rantambe	50	50	36	1,161
Ukuwela	37	40	36	856
Bowatenna	40	40	38	911
Upper Kotmale	150	150	150	1,999
Nilambe	3	3	3	78
Samanalawewa	120	120	120	2,882
Kukule	75	75	76	925
Inginiyagala	11	7	8	180
Udawalawe	6	3	3	78
Puttalam Coal I	270	270	0	0
Puttalam Coal II	270	270	273	6,252
Puttalam Coal III	270	0	0	0
KPS Small GTs	64	16	0	0
KPS GT 7	115	115	0	0
KCCP	161	150	0	0
Sapugaskanda A	70	49	0	0
Sapugaskanda B	70	54	0	0
Uthura Janani	26	16	16	242
Barge CEB	60	60	60	1,149
CEB-Hambantota	30	18	0	0
CEB-Mathugama	20	12	0	0
ACE Matara	24	24	24	103
Asia Power	50	0	0	0
KCCPS -2	163	155	0	0
West Coast	270	270	286	2,225
Nothern Power	36	0	0	0
ACE Embilipitiya	93	93	84	200
<b>Total</b>	<b>3,483</b>	<b>2,983</b>	<b>2,239</b>	<b>41,057</b>

Plant availability is the availability recorded at 6 am on

January 5, 2024

### 10. Contribution to the Night Peak in MW

January 4, 2024



**Table 06**

CEB Hydro	1340	MW
CEB Coal	273	MW
CEB Thermal Oil	76	MW
IPP Thermal Oil	394	MW
Mini Hydro (Telemetered)	136	MW
IPP Wind	5.7	MW
CEB Wind	28.3	MW
Biomass/ Solid Waste	2	MW

### Recorded Peak Demand Data

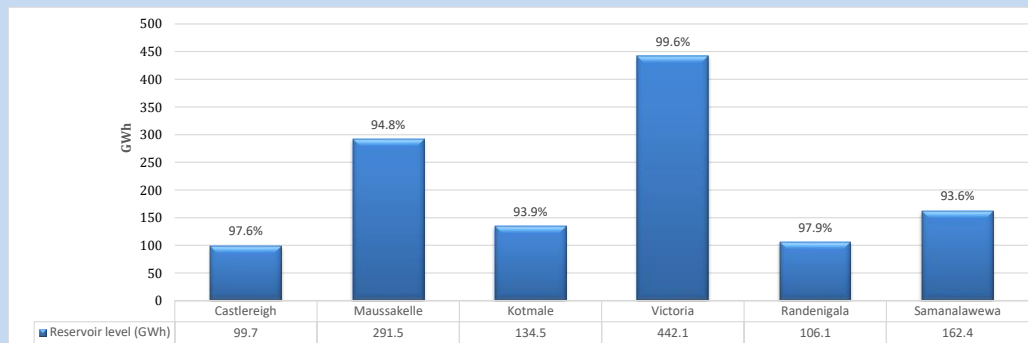
**Table 07**

Night Peak*	2,255	MW
Day Peak Maximum Demand	2,021	MW
Day Peak Minimum Demand	563	MW
Off Peak Minimum Demand	1,212	MW

Above figures are excluding contribution from roof top solar, non telemetered solar and mini hydro plants

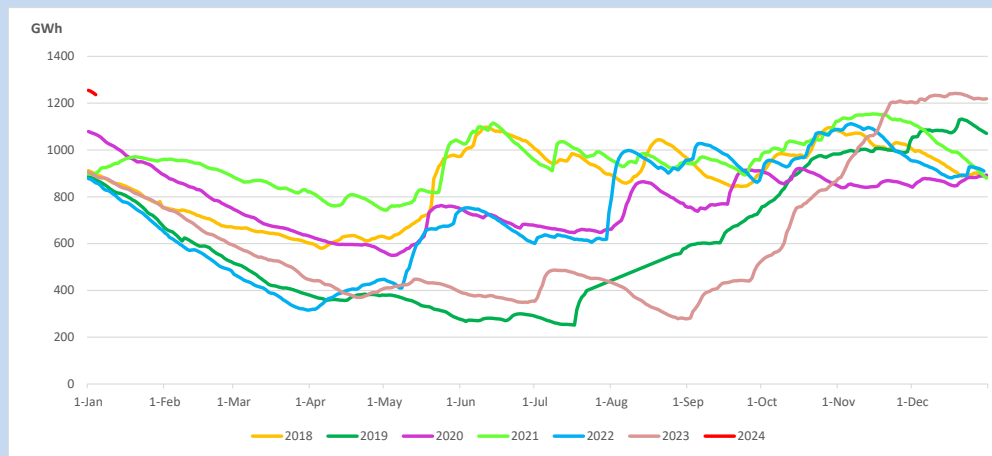
### Reservoir Levels -

as at 06.00 Hr on January 5, 2024

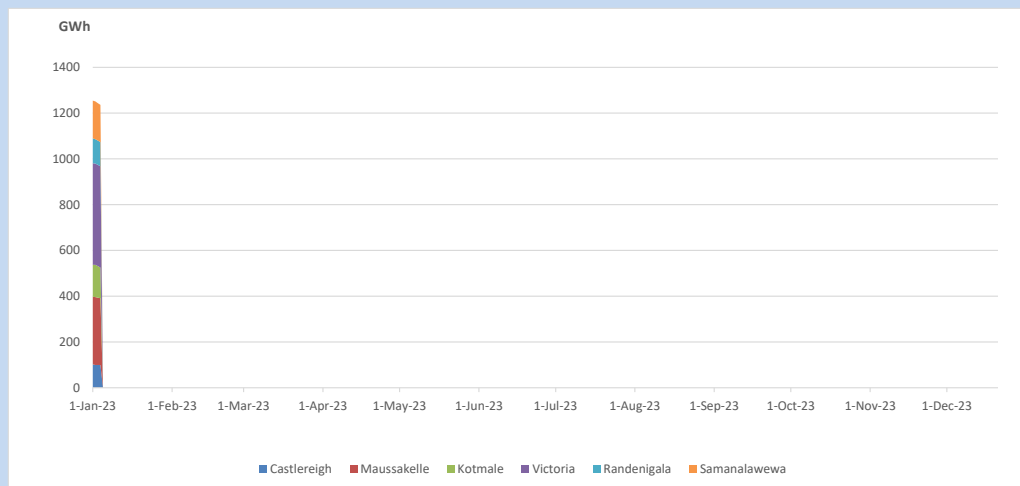


Total Reservoir Level            1236.3 GWh  
 % of Total capacity                96.7%

### 11. Comparison of Total Reservoir Storage Levels with Past Years

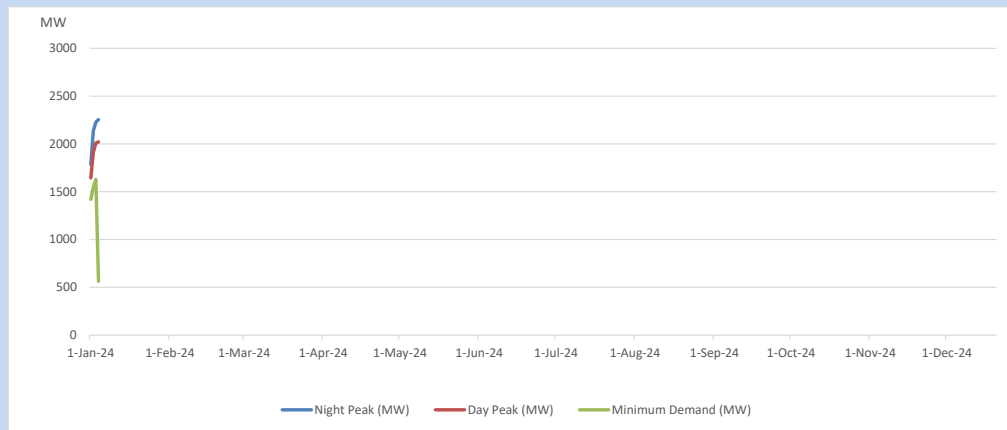


### 12. Variation of Major Hydro Reservoir Levels in the current year (GWh)





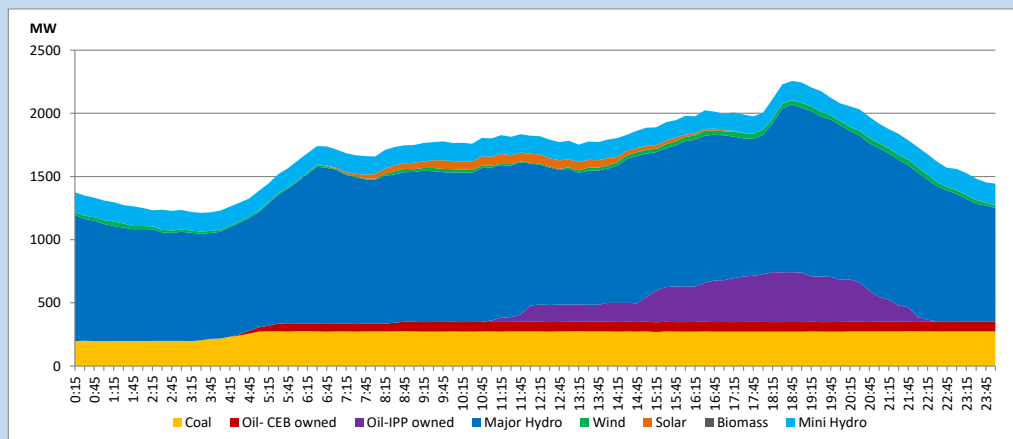
### 13. Variation of Demand during the current year



The above figures are excluding contribution from roof top solar, non telemetered solar and mini hydro plants

### 14. Daily Load Curve

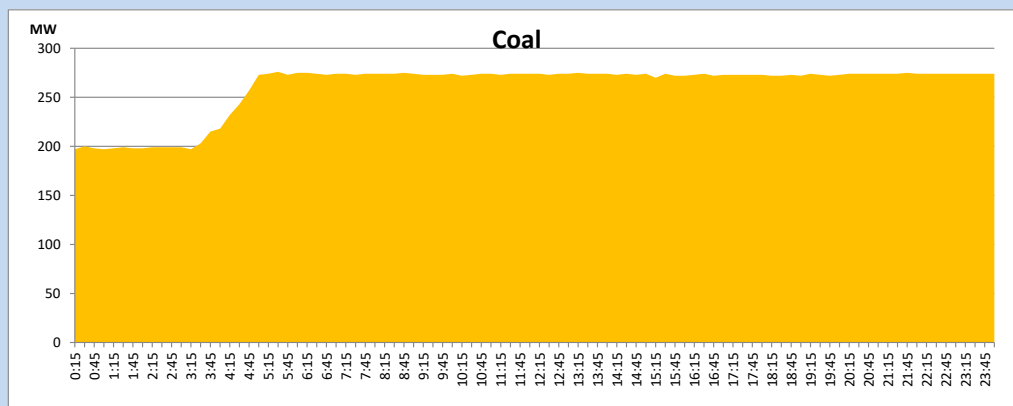
January 4, 2024



Solar and wind data is based on Telemetered Power Stations only

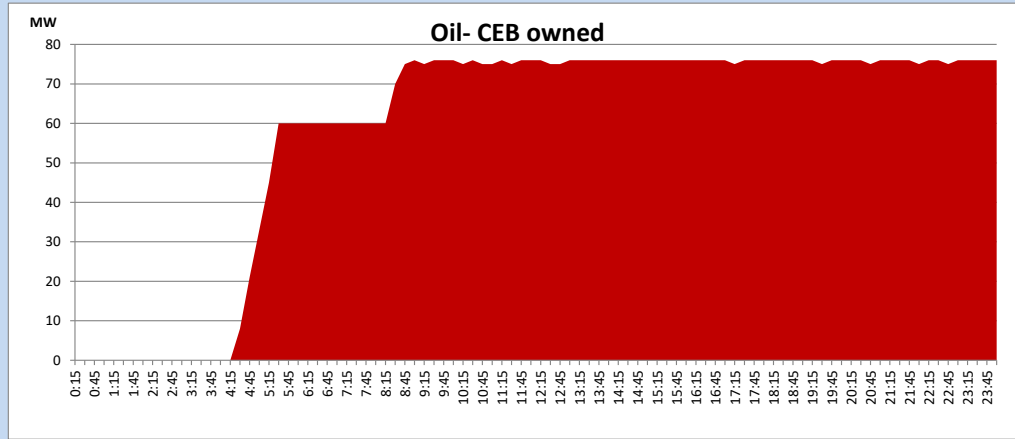
### Coal Generation during

January 4, 2024



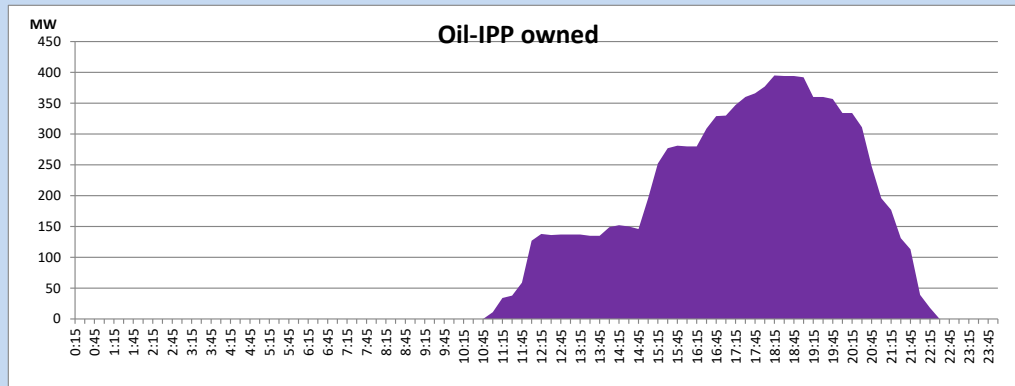
CEB Oil Plant Generation during

January 4, 2024



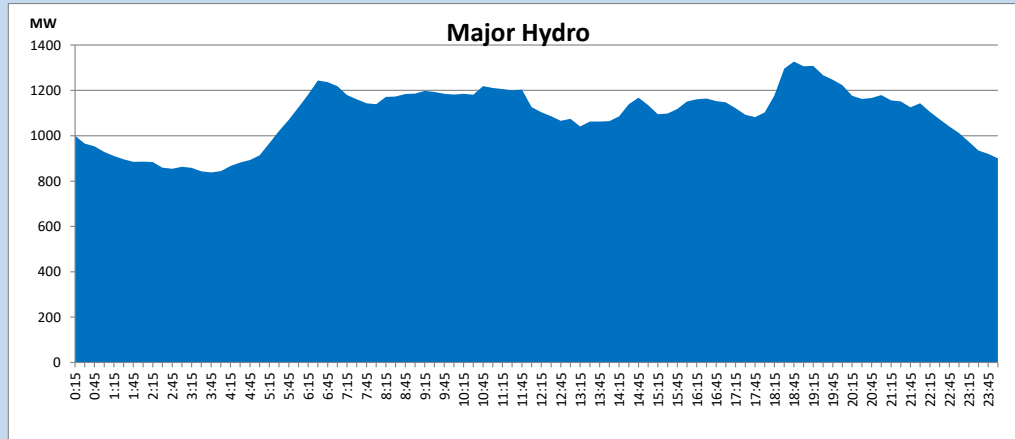
IPP Oil Plant Generation during

January 4, 2024



Major Hydro Generation during

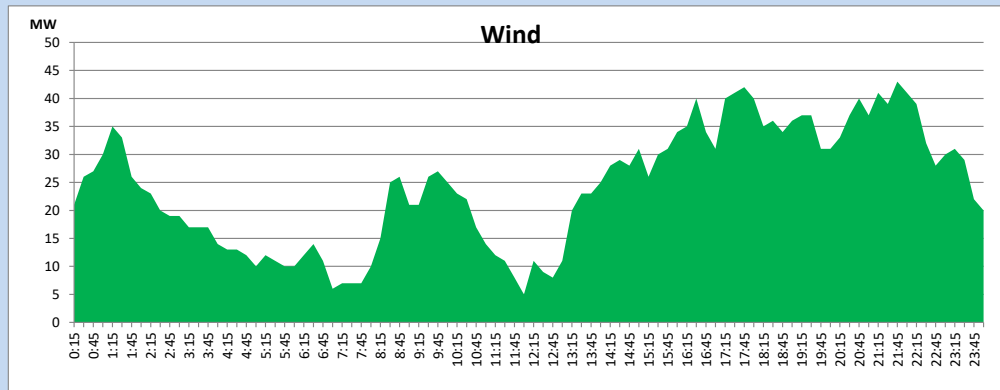
January 4, 2024



## Wind Generation during

January 4, 2024

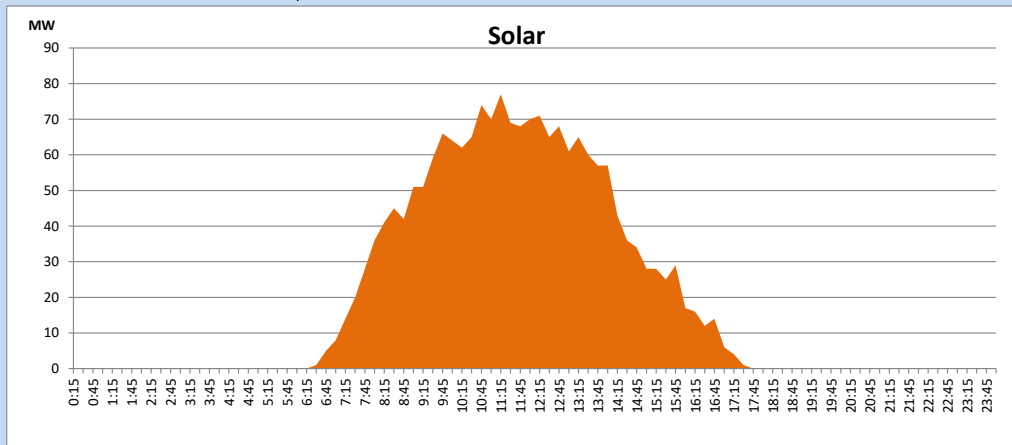
Based on Telemetered Power Stations only



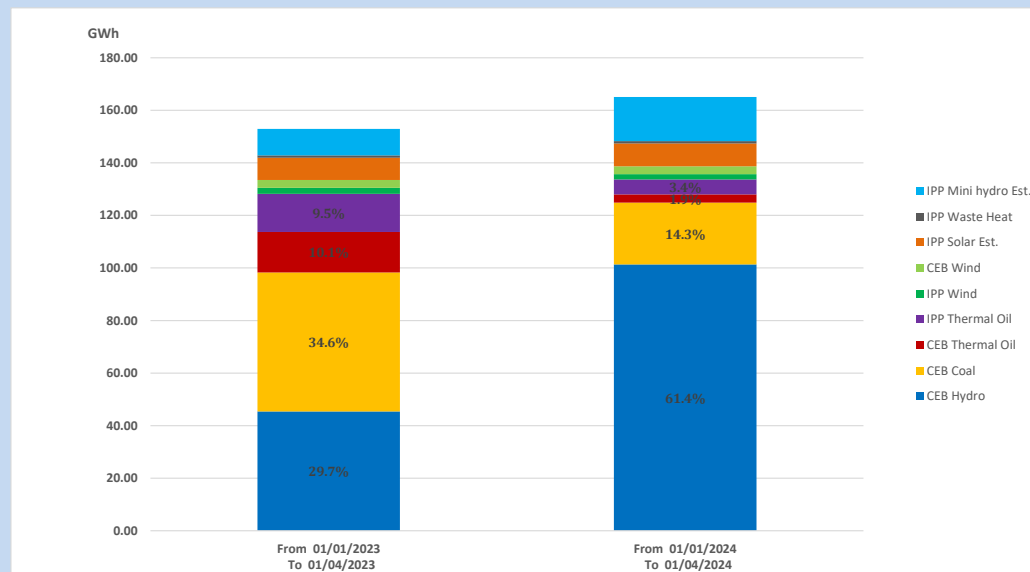
## Solar Generation during

January 4, 2024

Based on Telemetered Power Stations only



## 15. Cumulative Dispatch Comparison with Last Year



Cumulative dispatch  
 From 01/01/2023 To 01/04/2023  
 From 01/01/2024 To 01/04/2024

153 GWh  
 165 GWh

The above figures are including contribution from roof top solar, non telemetered solar and mini hydro plants (figures have been adjusted based on the data from the CEB monthly review reports.)

Thermal Plant Fuel types

Table 08

Power Station	Primary Fuel
CEB Thermal	
Sapugaskanda 1	Heavy Fuel
Sapugaskanda 2	Heavy Fuel
Kelanitissa Small Gas Turbines	Auto Diesel
GT 7 - Kelanitissa	Auto Diesel
Kelanitissa CCY	Naphtha or Diesel
Lakvijaya 1	Coal
Lakvijaya 2	Coal
Lakvijaya 3	Coal
Uthuru Janani	Heavy Fuel
Barge CEB	Heavy Fuel
KCCPS -2	Auto Diesel

Power Station	Primary Fuel
Private Thermal	
West Coast	Auto Diesel / Heavy Fuel
ACE Matara	Heavy Fuel
ACE Embilipitiya	Heavy Fuel

Major Incidents reported during the day

January 4, 2024

- 1) Old Laxapana stage-01 generator T/F which tripped at 07:50hrs (03.01.2024) was restored at 16:36hrs. Old Laxapana Generator 01 and 03 resumed generation at 16:57hrs and 16:48hrs respectively. Old Laxapana Generator 02 resumed generation at 23:58hrs after planned maintenance work.
- 2) Kerawalapitiya GSS 220/33kV T/F 02 which tripped at 05:08hrs, was restored at 11:24hrs.
- 3) Randenigala reservoir spilling started at 00:56hrs(05.01.2024) and stopped at 3:41hrs(05.01.2024).
- 4) Rantambe pond spilling continues to the present hour.