

Generation and Reservoirs Statistics

November 29, 2023



PUBLIC UTILITIES COMMISSION OF SRI LANKA

1. Daily Generation Mix in MWh

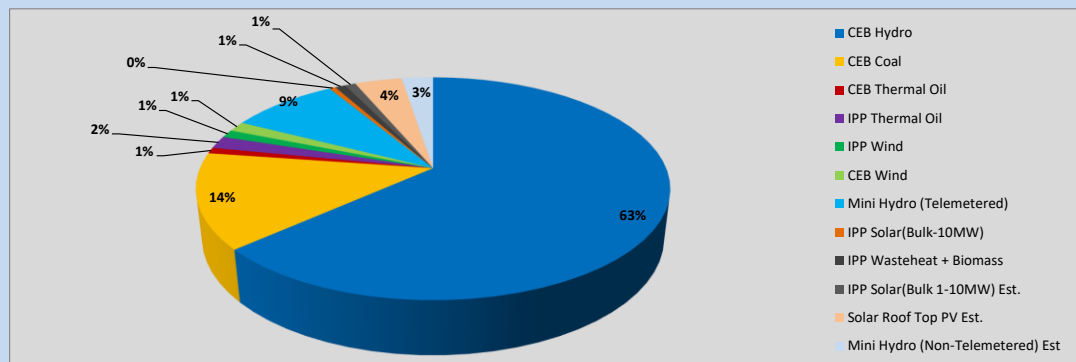


Table 01

	Generation (MWh)
CEB Hydro	27,103
CEB Coal	5,922
CEB Thermal Oil	366
IPP Thermal Oil	779
IPP Wind	484
CEB Wind	626
Mini Hydro (Telemetered)	3,776
IPP Solar (Bulk)	215
IPP Waste heat + Biomass	359
Total Generation (Excluding estimated figures)	39,630
* Estimated unserved energy	0
* Estimated Mini Hydro (Non telemetered)	1094
* Estimated IPP Solar PV (Bulk 1-10MW)	304
* Estimated Solar Roof Top PV	1640
Total Generation (Including estimated figures)	42,668

* Estimated figures of CEB generation report

Table 02

	Installed Capacity (MW)
CEB Hydro	1409
CEB Coal	810
CEB Thermal Oil	781
IPP Thermal Oil (West Coast, ACE Matara and ACE Embilipitiya)	387
IPP Wind	148
CEB Wind	100
Mini Hydro	422
IPP Waste heat + Biomass	50
IPP Solar	136
Rooftop Solar (Ordinary)	277
Rooftop Solar (LT Bulk)	263
Rooftop Solar (HT Bulk)	70

Data Source - Monthly Review Report [Aug-2023]

2. Cumulative Dispatch

Following data excludes the contribution from roof top solar, non telemetered solar and mini hydro plants

Table 03 - Current Month

Category	Dispatch (GWh)	
CEB Hydro	695	59.24%
CEB Coal	224	19.10%
CEB Thermal Oil	10	0.84%
IPP Thermal	12	1.04%
SPP Wind	8	0.70%
CEB Wind	10	0.87%
Mini Hydro *	141	12.03%
IPP Solar *	63	5.40%
IPP Waste heat + BMP	9	0.74%
Total	1,174	

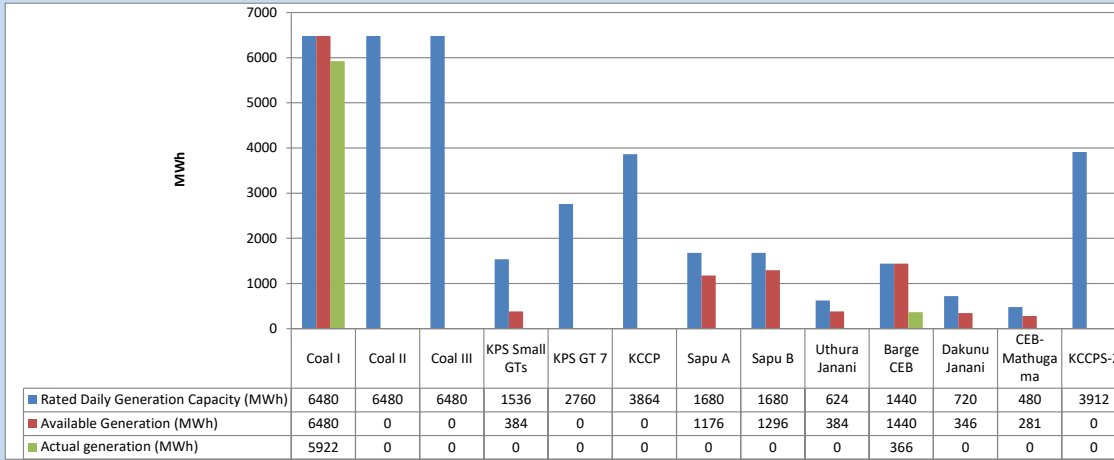
Table 04 - Current Year

Category	Dispatch (GWh)	
CEB Hydro	3,797	26.91%
CEB Coal	4,490	31.82%
CEB Thermal Oil	1,955	13.85%
IPP Thermal	1,126	7.98%
SPP Wind	373	2.64%
CEB Wind	362	2.57%
Mini Hydro *	1,068	7.57%
IPP Solar *	800	5.67%
IPP Waste heat	139	0.99%
Total	14,110	

*Including estimated contribution from non telemetered plants

3. CEB owned Thermal Plant Dispatch

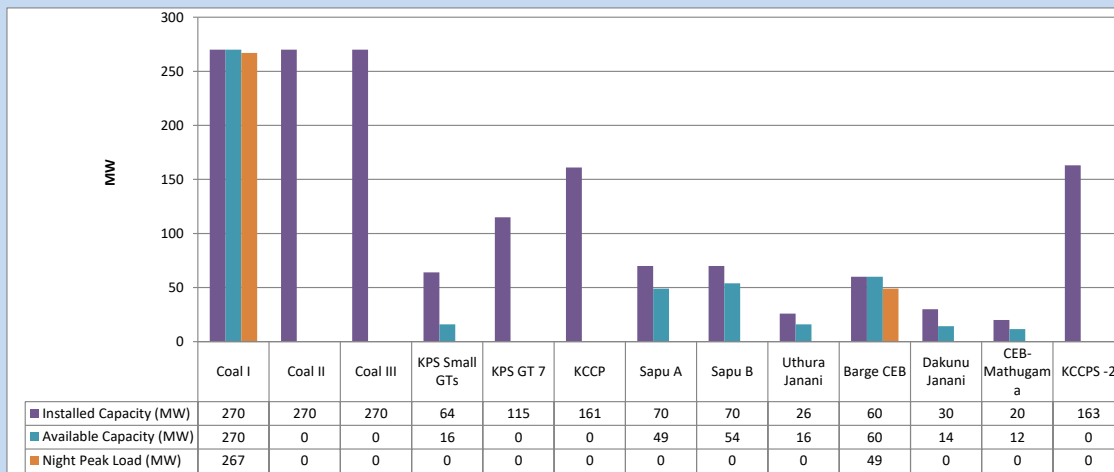
November 29, 2023



Available Generation is estimated based on plant availability at 6.00am on

November 30, 2023

4. CEB owned Thermal Plant Loading at the Night Peak

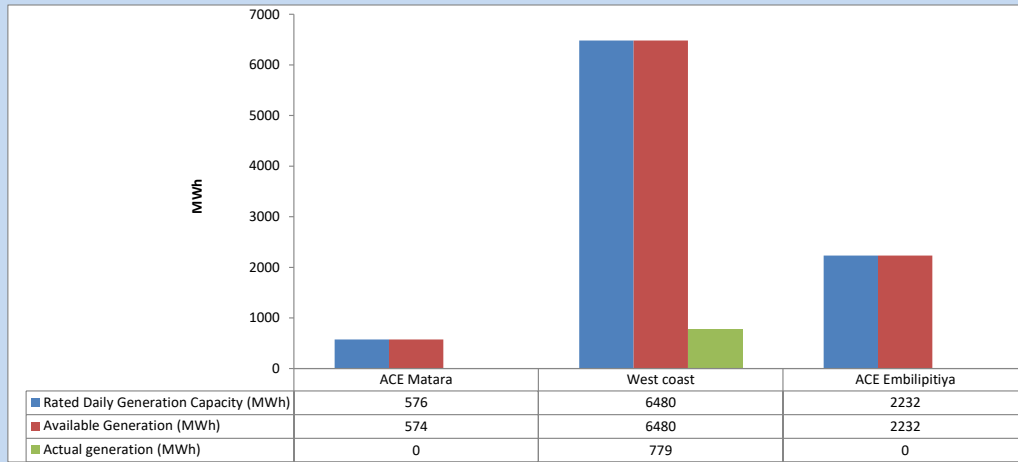


Plant availability is recorded at 6.00 am on

November 30, 2023

5. IPP owned Thermal Plant Dispatch

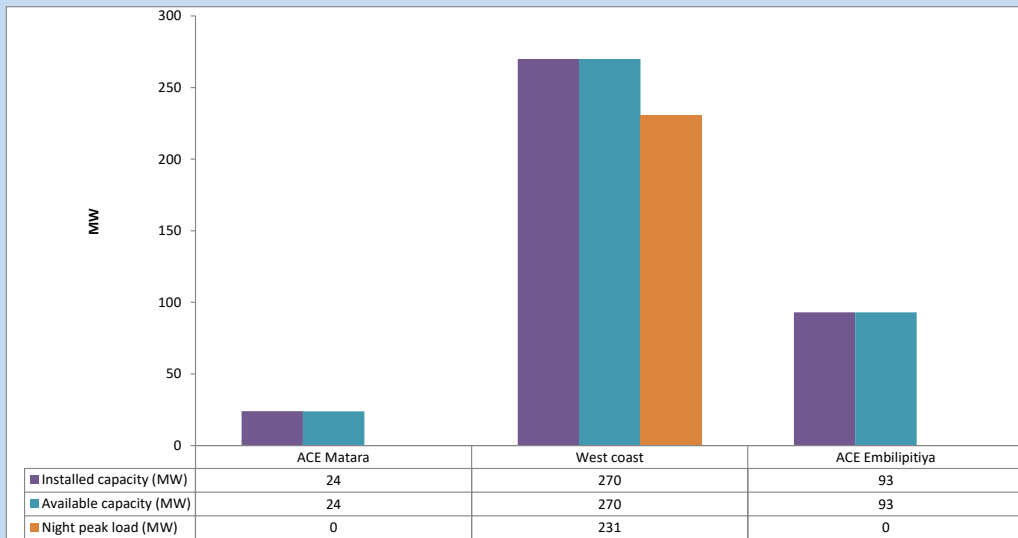
November 29, 2023



Available Generation is estimated based on plant availability at 6.00am on

November 30, 2023

6. IPP owned Thermal Plant Loading at the Night Peak

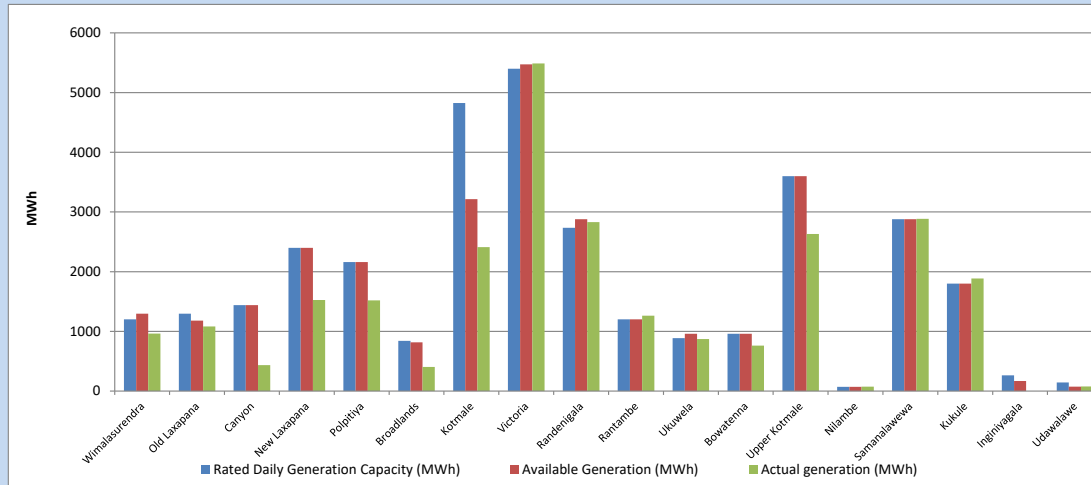


Plant availability is recorded at 6.00 am on

November 30, 2023

7. Major Hydro Plant Dispatch

November 29, 2023

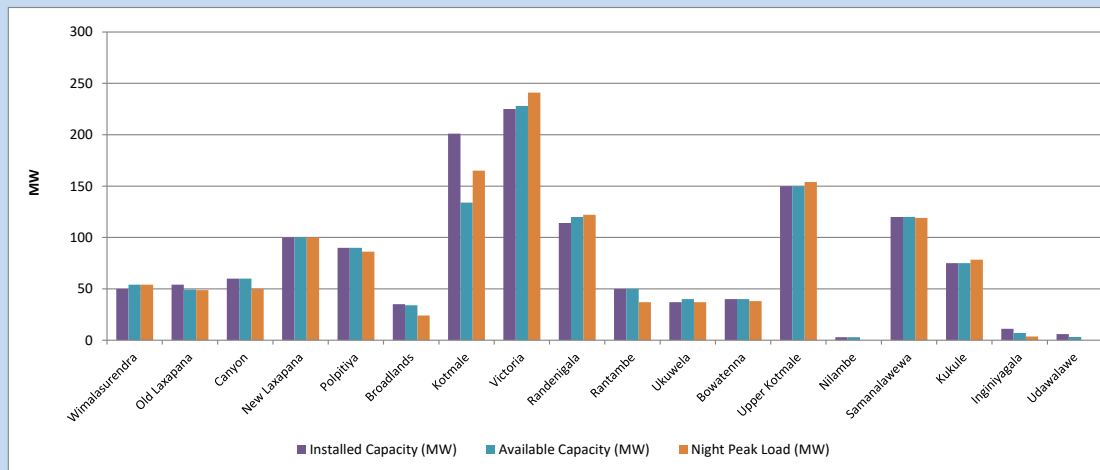


Available Generation is estimated based on plant availability at 6.00am on November 30, 2023
Broadlands power plant is operating in the Commissioning Stage

November 30, 2023

8. Major Hydro Plant Loading at Night Peak

November 29, 2023



Plant availability is recorded at 6.00 am on November 30, 2023
Broadlands power plant is operating in the Commissioning Stage

November 30, 2023

9. Summary of Major Plant performance

Table 05

Plant	Installed Capacity (MW)	Plant Availability (MW)	Night peak Load (MW)	Plant Dispatch (MWh)
Wimalasurendra	50	54	54	962
Old Laxapana Canyon	54	49	49	1,083
New Laxapana	60	60	50	435
Polpitiya	100	100	100	1,524
Broadlands	90	90	86	1,520
Kotmale	35	34	24	405
Victoria	201	134	165	2,410
Randenigala	225	228	241	5,487
Rantambe	114	120	122	2,830
Ukuwela	50	50	37	1,261
Bowatenna	37	40	37	872
Upper Kotmale	40	40	38	762
Nilambe	150	150	154	2,631
Samanalawewa	3	3	0	74
Kukule	120	120	119	2,886
Inginiyagala	75	75	78	1,885
Udawalawe	11	7	4	0
Puttalam Coal I	6	3	0	78
Puttalam Coal II	270	270	267	5,922
Puttalam Coal III	270	0	0	0
KPS Small GTs	270	0	0	0
KPS GT 7	64	16	0	0
KCCP	115	0	0	0
Sapugaskanda A	161	0	0	0
Sapugaskanda B	70	49	0	0
Uthura Janani	70	54	0	0
Barge CEB	26	16	0	0
CEB-Hambantota	60	60	49	366
CEB-Mathugama	30	14	0	0
ACE Matara	20	12	0	0
Asia Power	24	24	0	0
KCCPS -2	50	0	0	0
West Coast	163	0	0	0
Nothern Power	270	270	231	779
ACE Embilipitiya	36	0	0	0
Total	93	93	0	0
Total	3,483	2,235	2,148	39,632

Plant availability is the availability recorded at 6 am on

November 30, 2023

10. Contribution to the Night Peak in MW

November 29, 2023

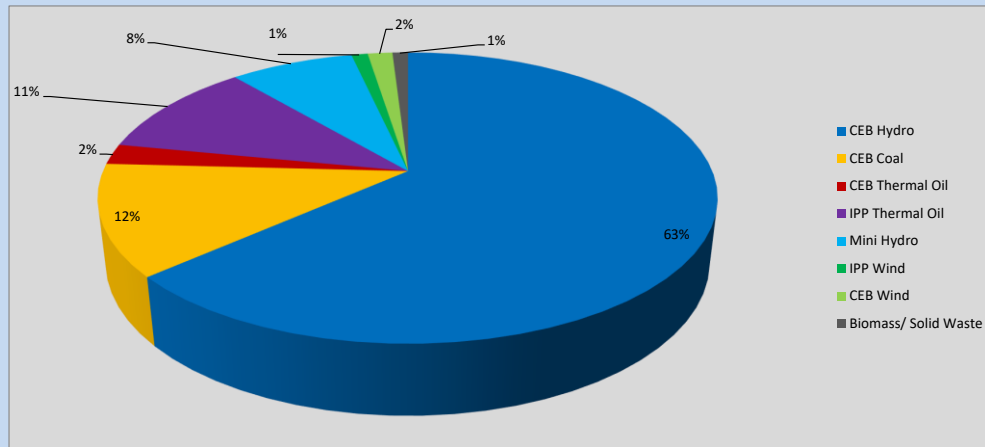


Table 06

CEB Hydro	1374	MW
CEB Coal	267	MW
CEB Thermal Oil	49	MW
IPP Thermal Oil	231	MW
Mini Hydro (Telemetered)	167	MW
IPP Wind	22	MW
CEB Wind	33.3	MW
Biomass/ Solid Waste	21	MW

Recorded Peak Demand Data

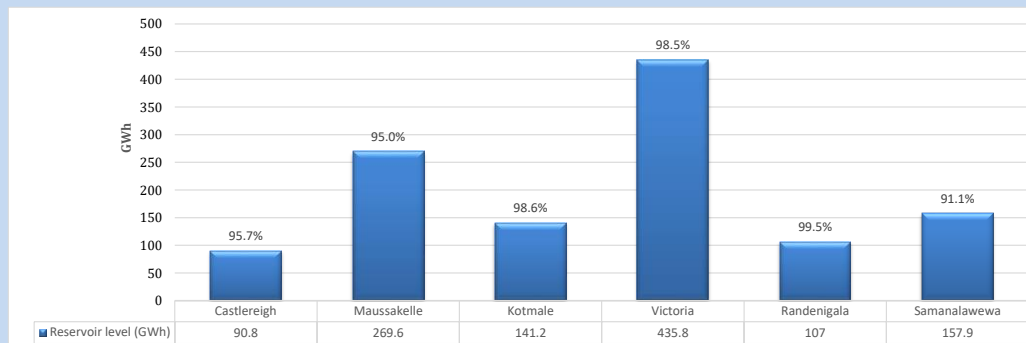
Table 07

Night Peak*	2,164	MW
Day Peak Maximum Demand	1,934	MW
Day Peak Minimum Demand	1,697	MW
Off Peak Minimum Demand	1,173	MW

Above figures are excluding contribution from roof top solar, non telemetered solar and mini hydro plants

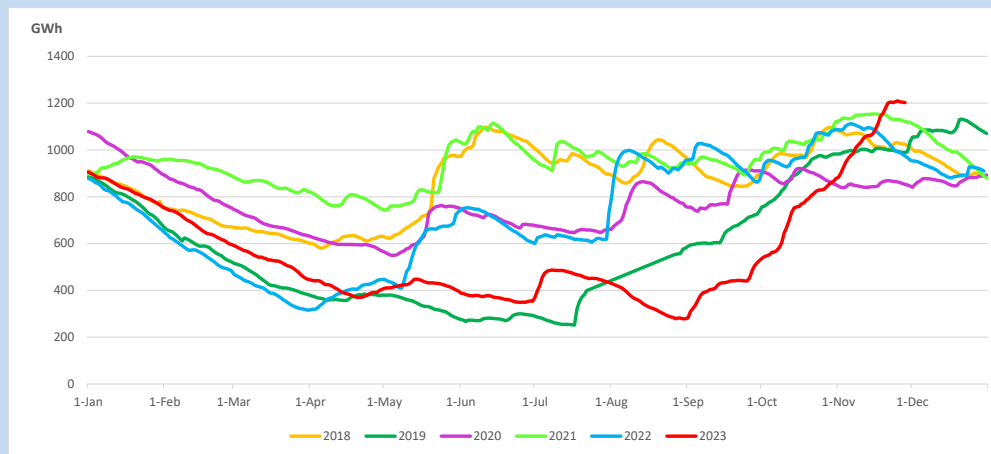
Reservoir Levels -

as at 06.00 Hr on November 30, 2023

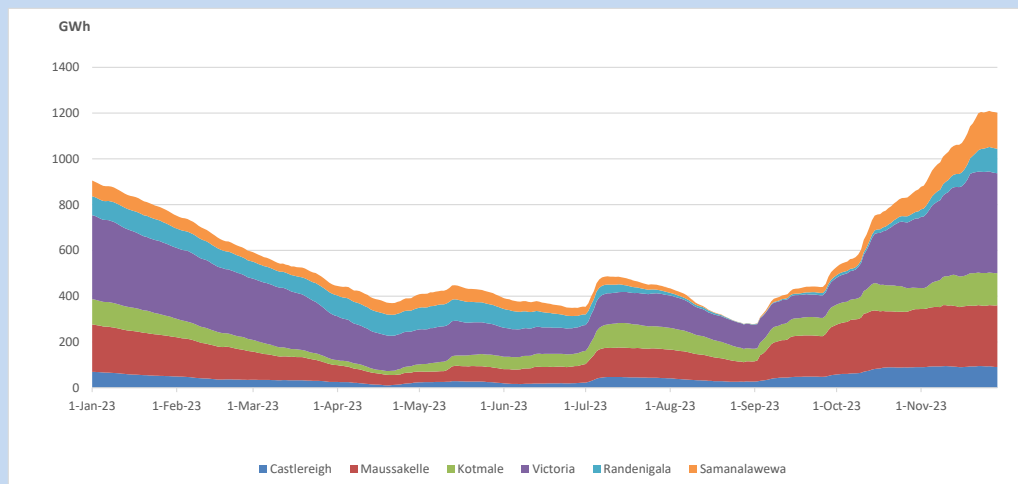


Total Reservoir Level 1202.3 GWh
 % of Total capacity 96.6%

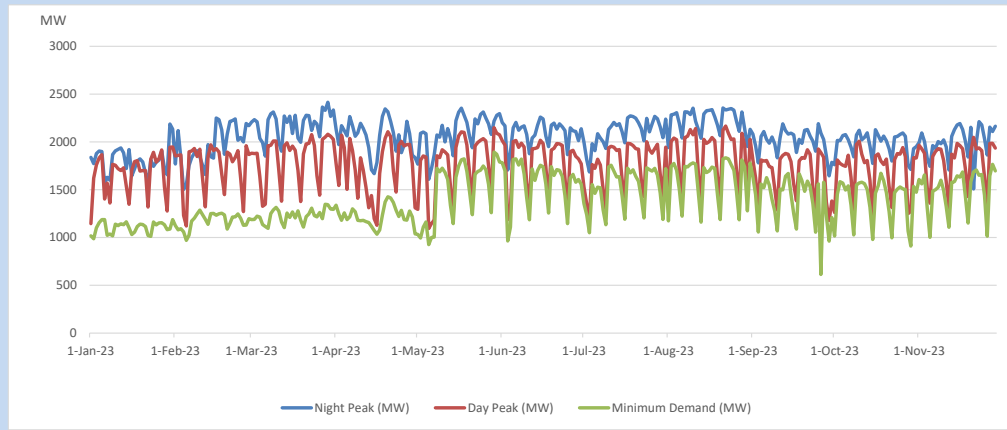
11. Comparison of Total Reservoir Storage Levels with Past Years



12. Variation of Major Hydro Reservoir Levels in the current year (GWh)



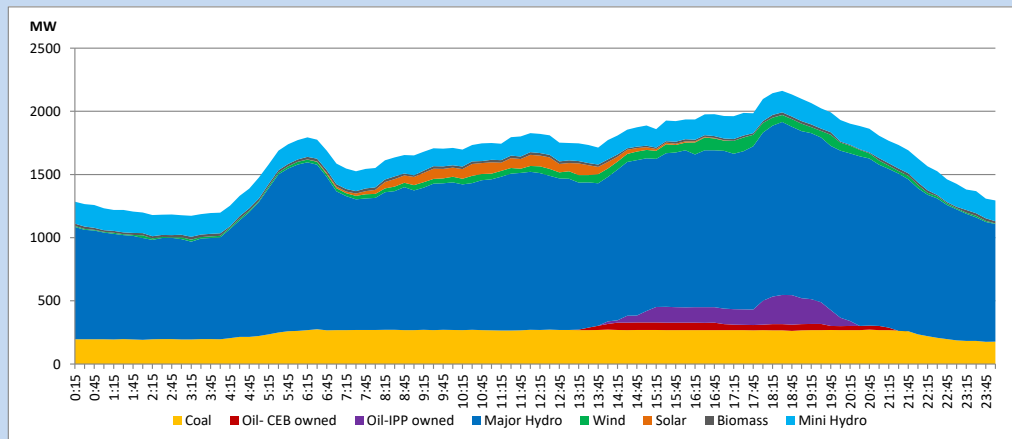
13. Variation of Demand during the current year



The above figures are excluding contribution from roof top solar, non telemetered solar and mini hydro plants

14. Daily Load Curve

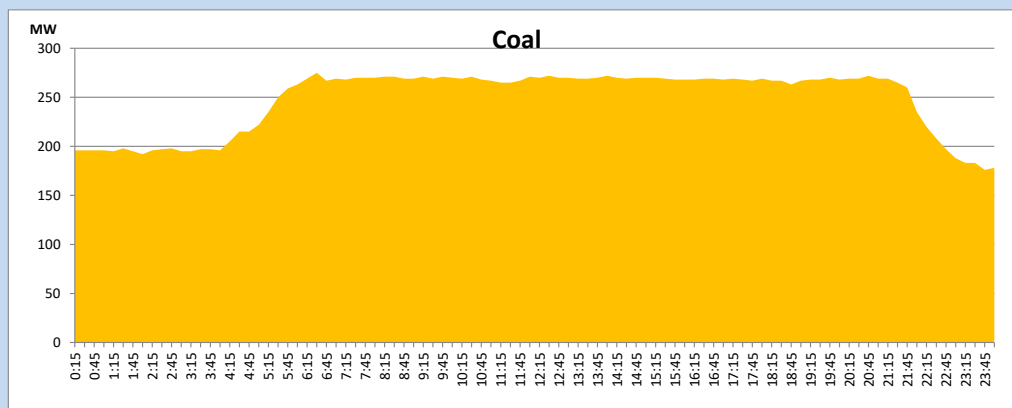
November 29, 2023



Solar and wind data is based on Telemetered Power Stations only

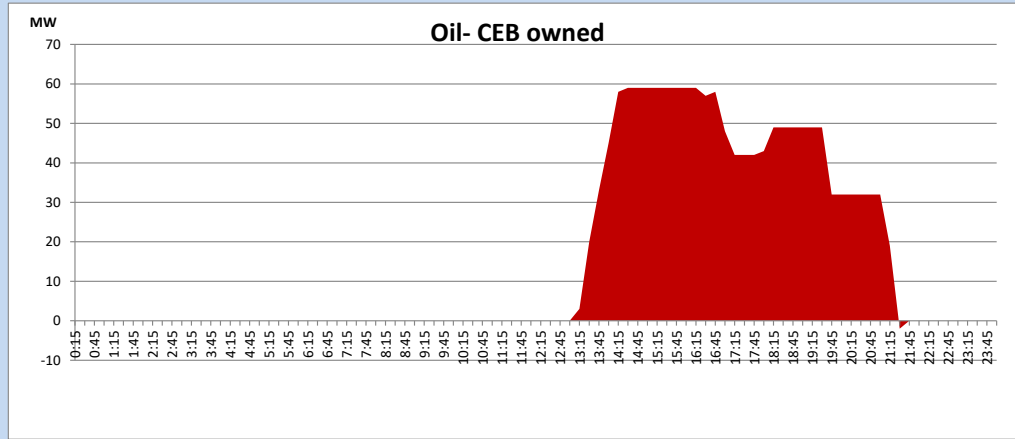
Coal Generation during

November 29, 2023



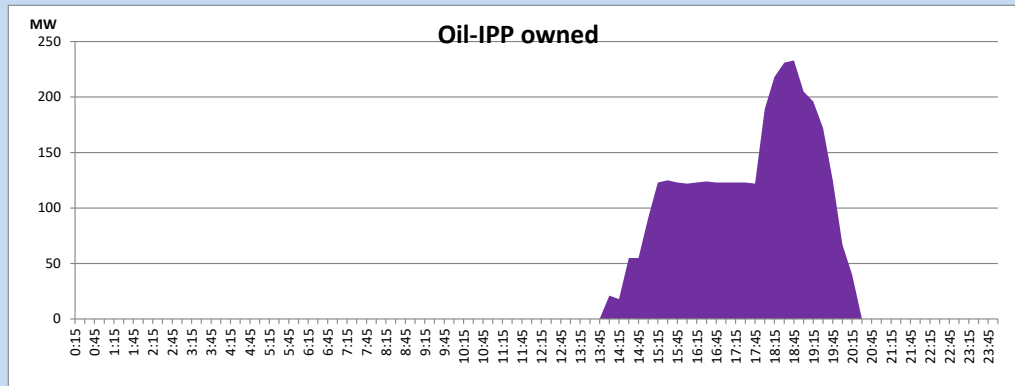
CEB Oil Plant Generation during

November 29, 2023



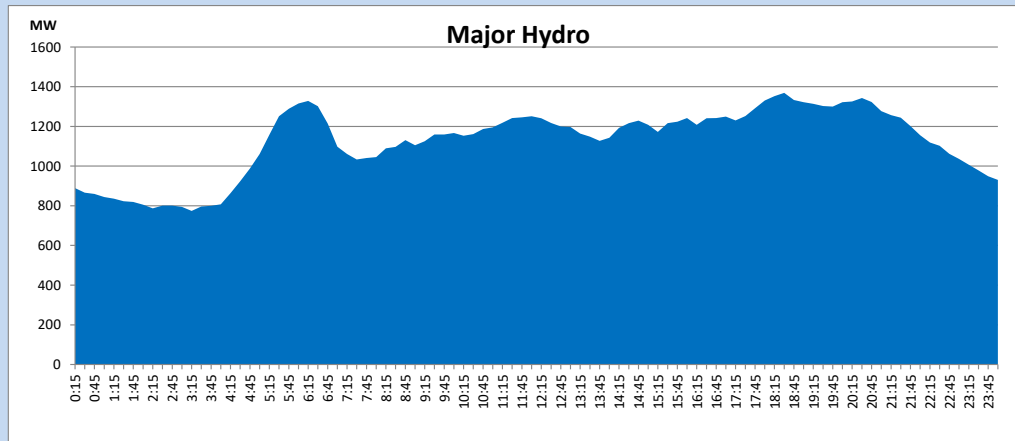
IPP Oil Plant Generation during

November 29, 2023



Major Hydro Generation during

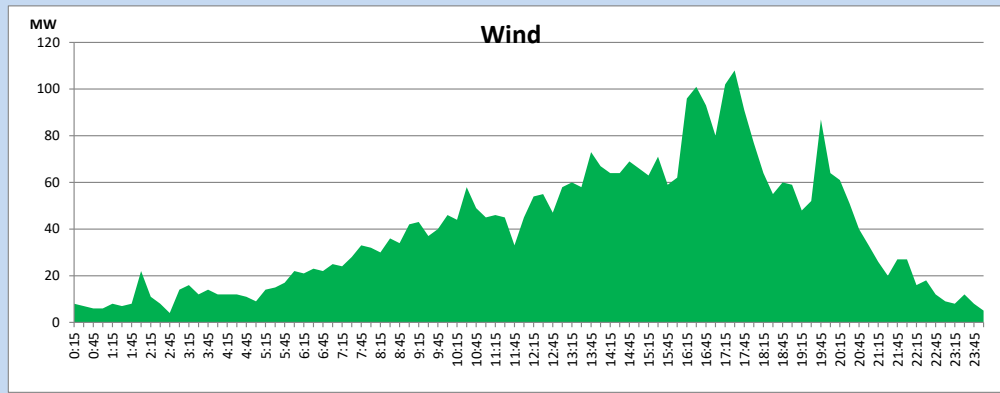
November 29, 2023



Wind Generation during

November 29, 2023

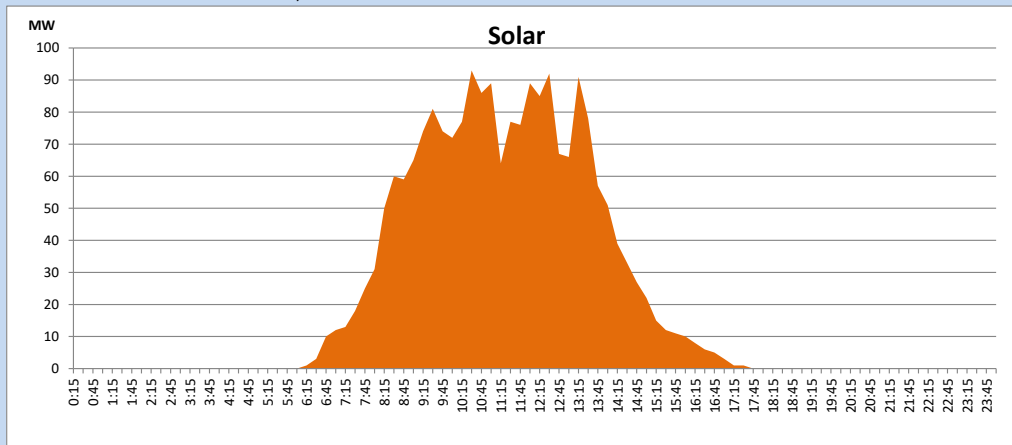
Based on Telemetered Power Stations only



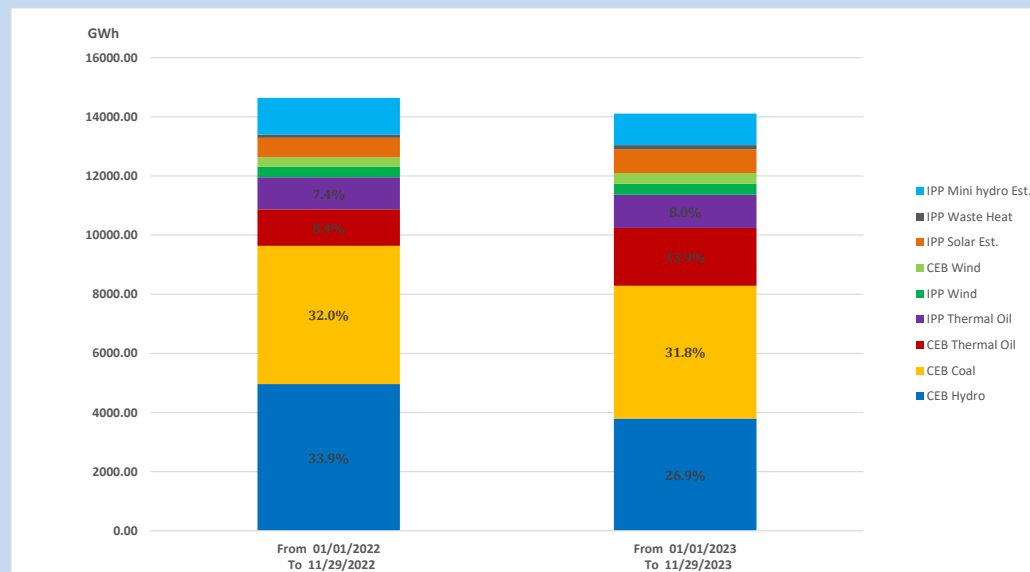
Solar Generation during

November 29, 2023

Based on Telemetered Power Stations only



15. Cumulative Dispatch Comparison with Last Year



Cumulative dispatch
 From 01/01/2022 To 11/29/2022
 From 01/01/2023 To 11/29/2023

14640 GWh
 14110 GWh

The above figures are including contribution from roof top solar, non telemetered solar and mini hydro plants (figures have been adjusted based on the data from the CEB monthly review reports.)

Thermal Plant Fuel types

Table 08

Power Station	Primary Fuel
CEB Thermal	
Sapugaskanda 1	Heavy Fuel
Sapugaskanda 2	Heavy Fuel
Kelanitissa Small Gas Turbines	Auto Diesel
GT 7 - Kelanitissa	Auto Diesel
Kelanitissa CCY	Naphtha or Diesel
Lakvijaya 1	Coal
Lakvijaya 2	Coal
Lakvijaya 3	Coal
Uthuru Janani	Heavy Fuel
Barge CEB	Heavy Fuel
KCCPS -2	Auto Diesel

Power Station	Primary Fuel
Private Thermal	
West Coast	Auto Diesel / Heavy Fuel
ACE Matara	Heavy Fuel
ACE Embilipitiya	Heavy Fuel

Major Incidents reported during the day

November 29, 2023

- 1) Athurugiriya - Thulhiriya - Polpitiya PS 132kV cct tripped and A/R from all ends at 16:03hrs due to the operation of distance protection. At the same time, Athurugiriya - Thulhiriya - New Polpitiya 132kV cct tripped and A/R from all ends due to the operation of distance protection.
- 2) Upper Kothmale pond spilling started at 01:37hrs (30.11.2023) and stopped at 02:06hrs (30.11.2023).