

Generation and Reservoirs Statistics

December 26, 2023



PUBLIC UTILITIES COMMISSION OF SRI LANKA

1. Daily Generation Mix in MWh

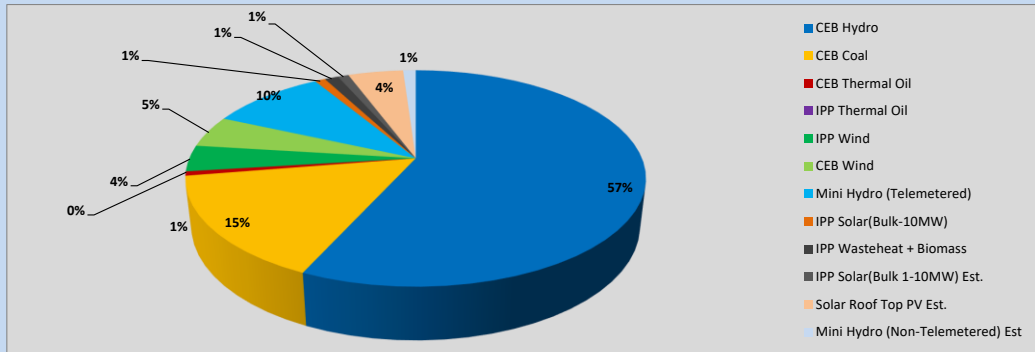


Table 01

	Generation (MWh)
CEB Hydro	18,898
CEB Coal	5,193
CEB Thermal Oil	213
IPP Thermal Oil	-
IPP Wind	1,303
CEB Wind	1,574
Mini Hydro (Telemetered)	3,218
IPP Solar (Bulk)	294
IPP Waste heat + Biomass	381
Total Generation (Excluding estimated figures)	31,074
* Estimated unserved energy	0
* Estimated Mini Hydro (Non telemetered)	352
* Estimated IPP Solar PV (Bulk 1-10MW)	304
* Estimated Solar Roof Top PV	1540
Total Generation (Including estimated figures)	33,270

* Estimated figures of CEB generation report

Table 02

	Installed Capacity (MW)
CEB Hydro	1409
CEB Coal	810
CEB Thermal Oil	781
IPP Thermal Oil (West Coast, ACE Matara and ACE Embilipitiya)	387
IPP Wind	148
CEB Wind	100
Mini Hydro	422
IPP Waste heat + Biomass	50
IPP Solar	136
Rooftop Solar (Ordinary)	277
Rooftop Solar (LT Bulk)	263
Rooftop Solar (HT Bulk)	70

Data Source - Monthly Review Report [Aug-2023]

2. Cumulative Dispatch

Following data excludes the contribution from roof top solar, non telemetered solar and mini hydro plants

Table 03 - Current Month

Category	Dispatch (GWh)	
CEB Hydro	634	62.81%
CEB Coal	131	12.95%
CEB Thermal Oil	19	1.91%
IPP Thermal	25	2.52%
SPP Wind	17	1.66%
CEB Wind	23	2.31%
Mini Hydro *	96	9.55%
IPP Solar *	54	5.32%
IPP Waste heat + BMP	10	0.98%
Total	1,009	

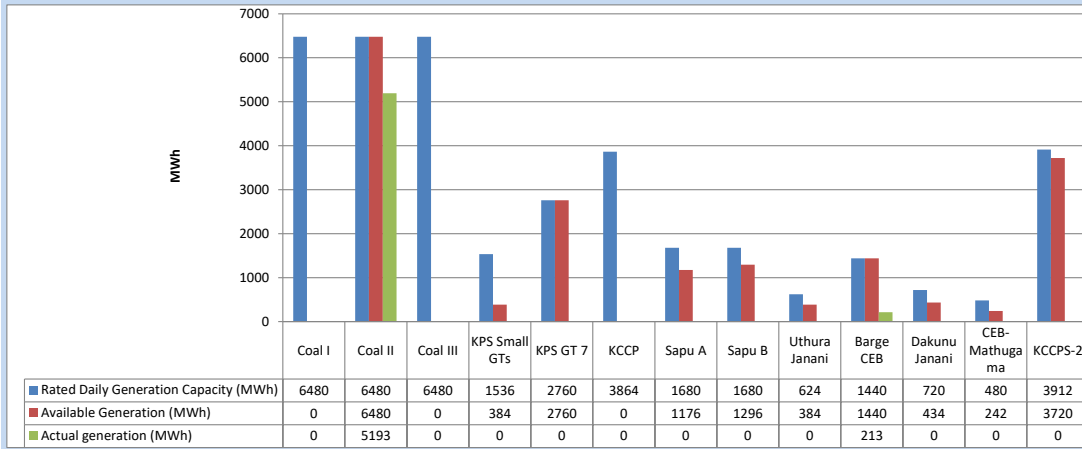
Table 04 - Current Year

Category	Dispatch (GWh)	
CEB Hydro	4,456	29.37%
CEB Coal	4,626	30.49%
CEB Thermal Oil	1,974	13.01%
IPP Thermal	1,152	7.59%
SPP Wind	385	2.54%
CEB Wind	385	2.54%
Mini Hydro *	1,185	7.81%
IPP Solar *	856	5.64%
IPP Waste heat	153	1.01%
Total	15,173	

*Including estimated contribution from non telemetered plants

3. CEB owned Thermal Plant Dispatch

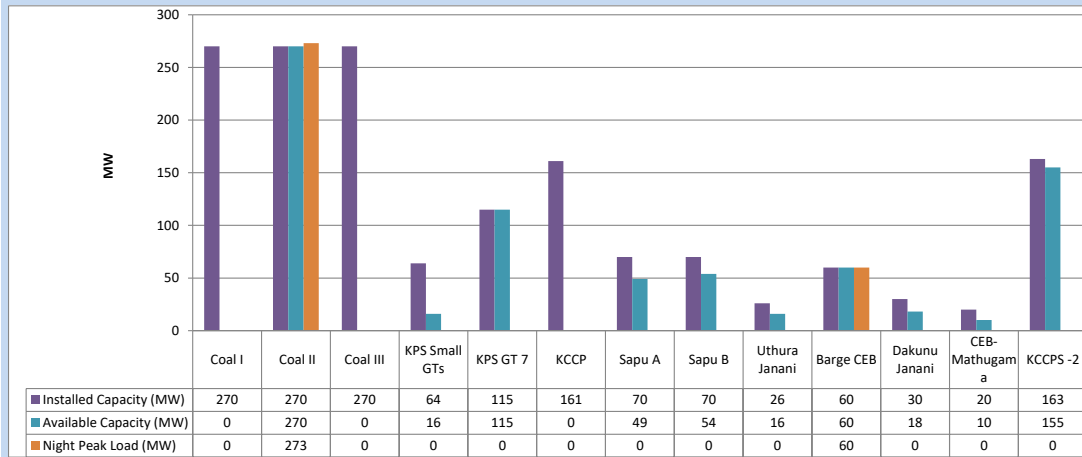
December 26, 2023



Available Generation is estimated based on plant availability at 6.00am on

December 27, 2023

4. CEB owned Thermal Plant Loading at the Night Peak

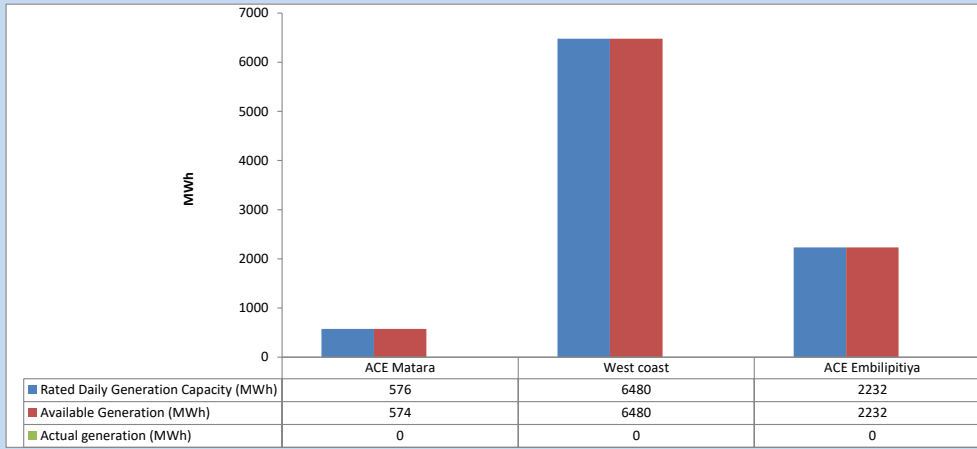


Plant availability is recorded at 6.00 am on

December 27, 2023

5. IPP owned Thermal Plant Dispatch

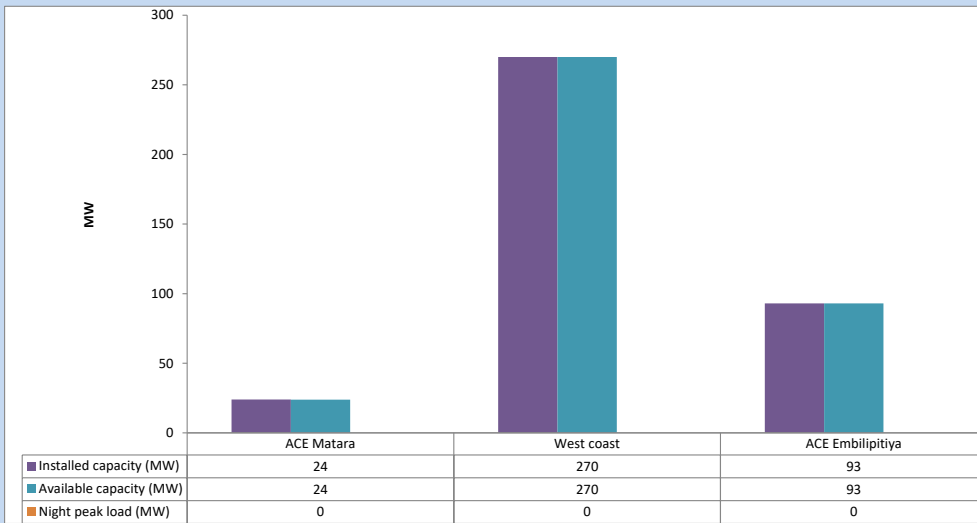
December 26, 2023



Available Generation is estimated based on plant availability at 6.00am on

December 27, 2023

6. IPP owned Thermal Plant Loading at the Night Peak

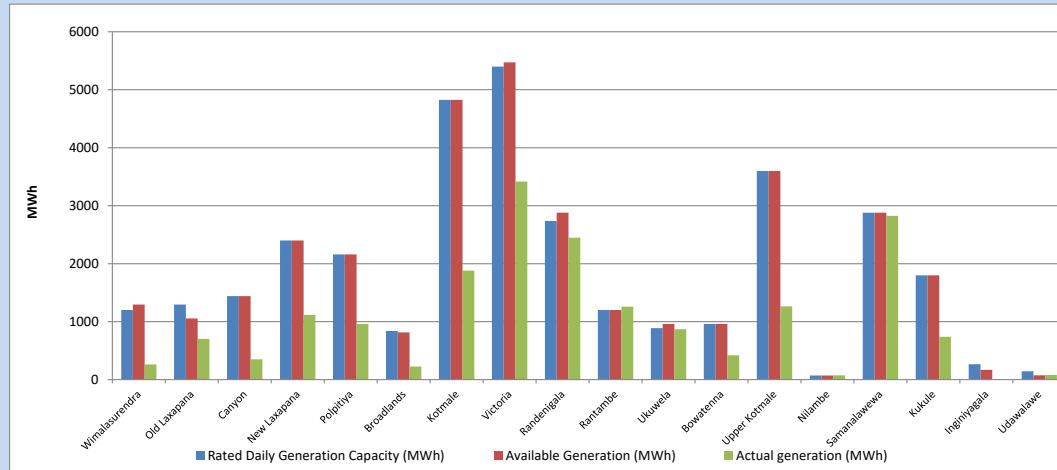


Plant availability is recorded at 6.00 am on

December 27, 2023

7. Major Hydro Plant Dispatch

December 26, 2023

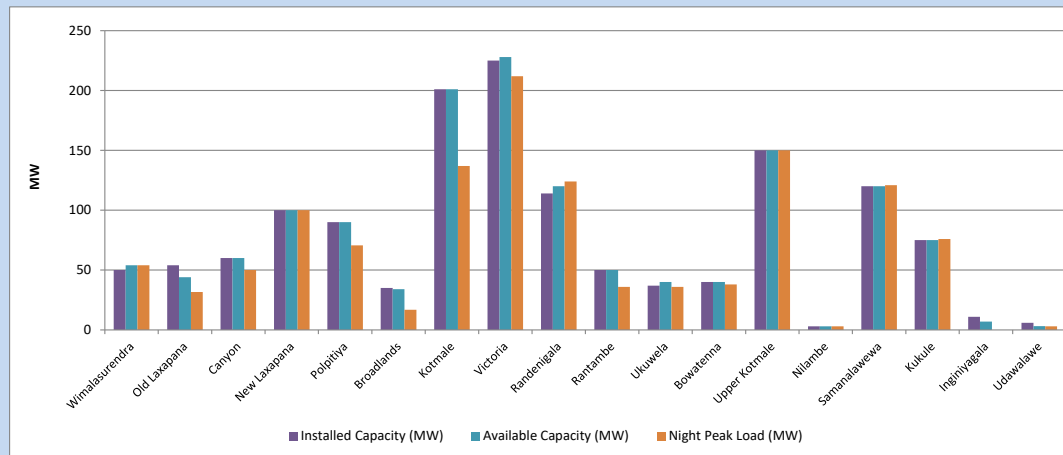


Available Generation is estimated based on plant availability at 6.00am on
Broadlands power plant is operating in the Commissioning Stage

December 27, 2023

8. Major Hydro Plant Loading at Night Peak

December 26, 2023



Plant availability is recorded at 6.00 am on
Broadlands power plant is operating in the Commissioning Stage

December 27, 2023

9. Summary of Major Plant performance

Table 05

Plant	Installed Capacity	Plant Availability	Night peak Load	Plant Dispatch
	(MW)	(MW)	(MW)	(MWh)
Wimalasurendra	50	54	54	262
Old Laxapana	54	44	32	704
Canyon	60	60	50	351
New Laxapana	100	100	100	1,117
Polpitiya	90	90	71	960
Broadlands	35	34	17	227
Kotmale	201	201	137	1,880
Victoria	225	228	212	3,418
Randenigala	114	120	124	2,449
Rantambe	50	50	36	1,257
Ukuwela	37	40	36	871
Bowatenna	40	40	38	420
Upper Kotmale	150	150	150	1,265
Nilambe	3	3	3	74
Samanalawewa	120	120	121	2,826
Kukule	75	75	76	738
Inginiyagala	11	7	0	0
Udawalawe	6	3	3	79
Puttalam Coal I	270	0	0	0
Puttalam Coal II	270	270	273	5,193
Puttalam Coal III	270	0	0	0
KPS Small GTs	64	16	0	0
KPS GT 7	115	115	0	0
KCCP	161	0	0	0
Sapugaskanda A	70	49	0	0
Sapugaskanda B	70	54	0	0
Uthura Janani	26	16	0	0
Barge CEB	60	60	60	213
CEB-Hambantota	30	18	0	0
CEB-Mathugama	20	10	0	0
ACE Matara	24	24	0	0
Asia Power	50	0	0	0
KCCPS -2	163	155	0	0
West Coast	270	270	0	0
Nothern Power	36	0	0	0
ACE Embilipitiya	93	93	0	0
Total	3,483	2,569	1,809	31,426

Plant availability is the availability recorded at 6 am on

December 27, 2023

10. Contribution to the Night Peak in MW

December 26, 2023

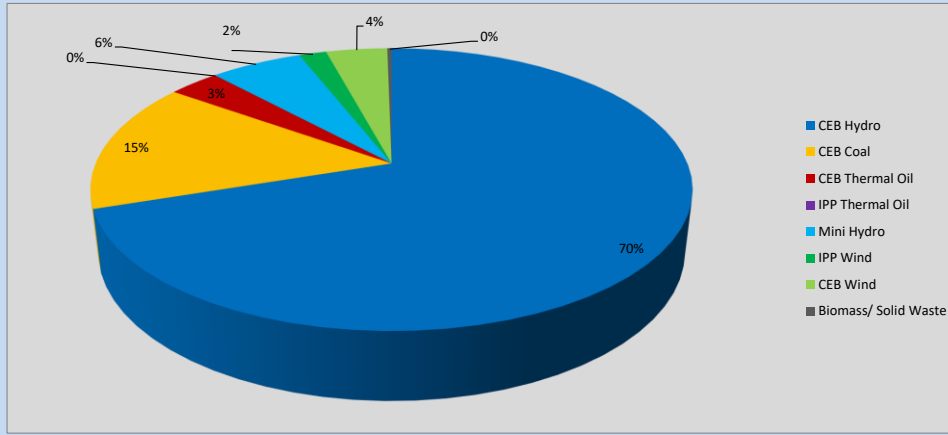


Table 06

CEB Hydro	1278	MW
CEB Coal	273	MW
CEB Thermal Oil	60	MW
IPP Thermal Oil	0	MW
Mini Hydro (Telemetered)	108	MW
IPP Wind	32.1	MW
CEB Wind	72	MW
Biomass/ Solid Waste	5	MW

Recorded Peak Demand Data

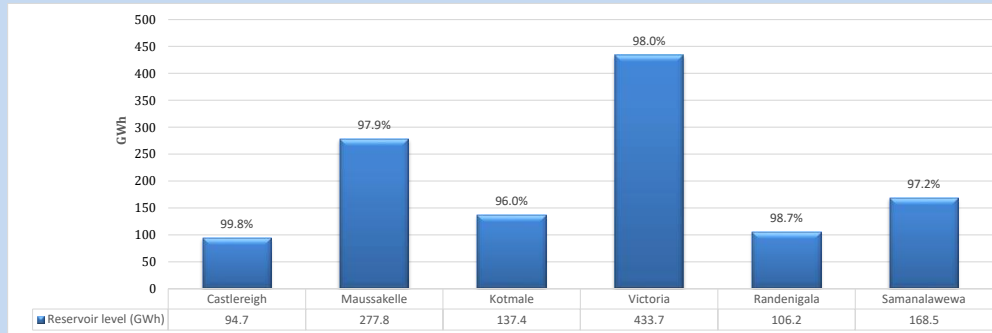
Table 07

Night Peak*	1,828	MW
Day Peak Maximum Demand	1,359	MW
Day Peak Minimum Demand	965	MW
Off Peak Minimum Demand	1,061	MW

Above figures are excluding contribution from roof top solar, non telemetered solar and mini hydro plants

Reservoir Levels -

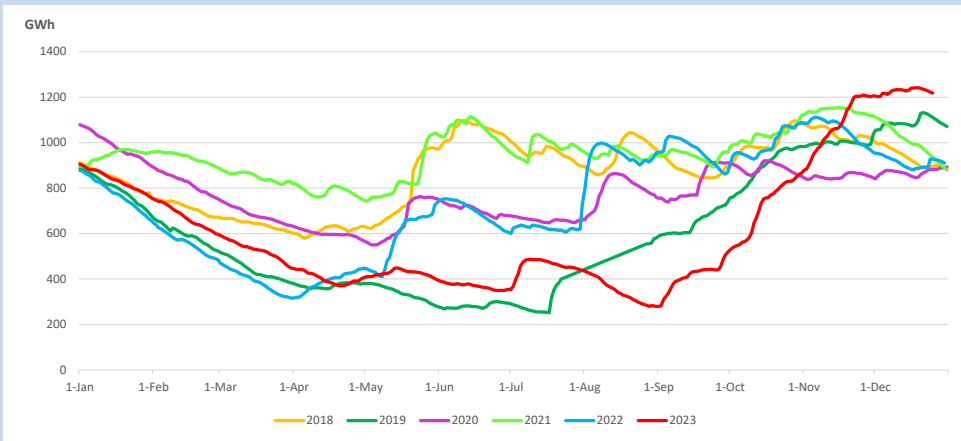
as at 06.00 Hr on December 27, 2023



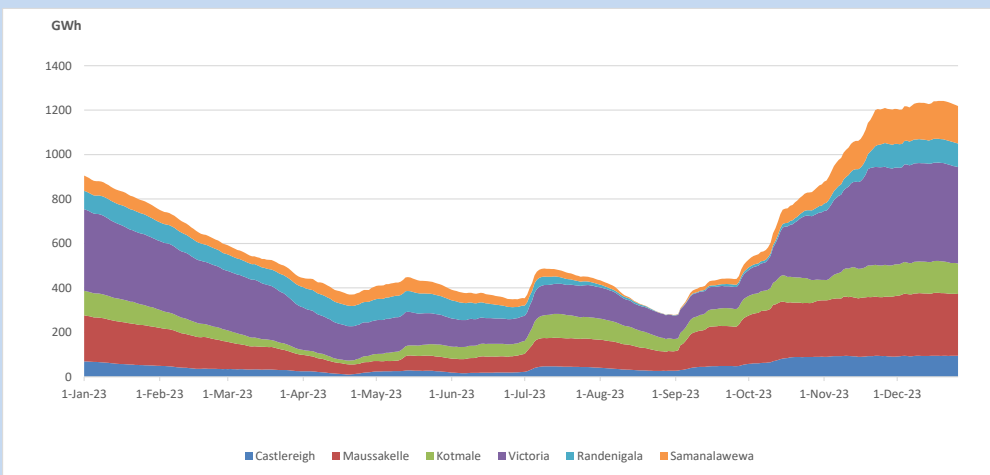
Total Reservoir Level
% of Total capacity

1218.3 GWh
97.8%

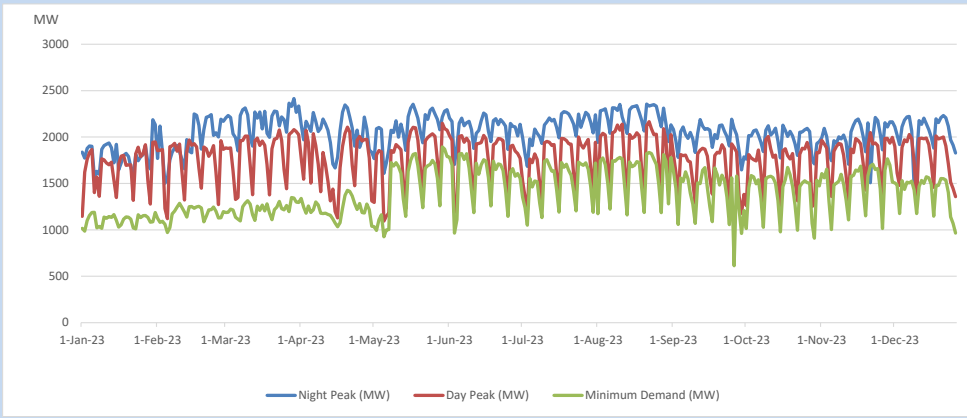
11. Comparison of Total Reservoir Storage Levels with Past Years



12. Variation of Major Hydro Reservoir Levels in the current year (GWh)



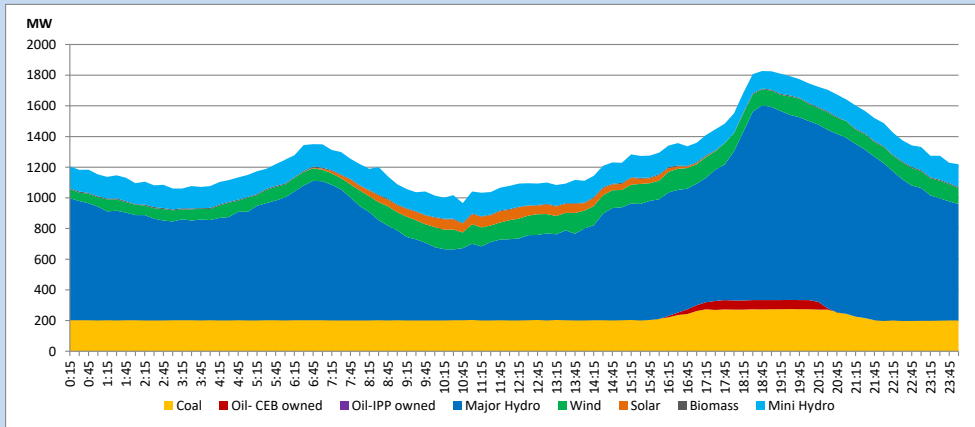
13. Variation of Demand during the current year



The above figures are excluding contribution from roof top solar, non telemetered solar and mini hydro plants

14. Daily Load Curve

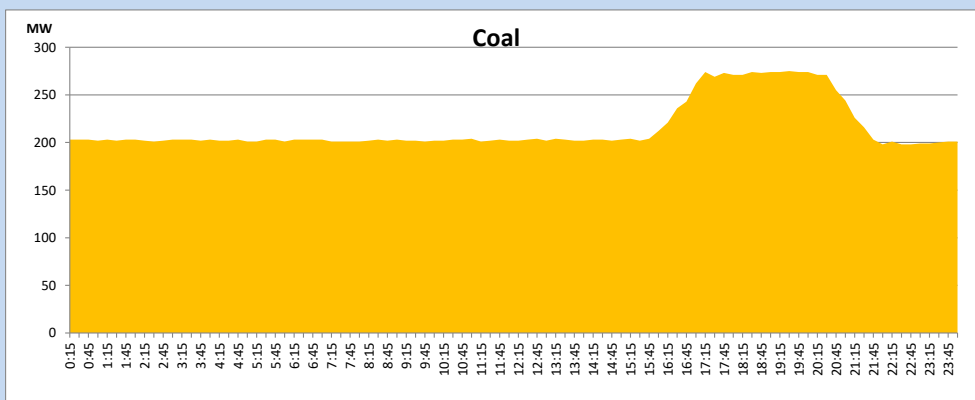
December 26, 2023



Solar and wind data is based on Telemetered Power Stations only

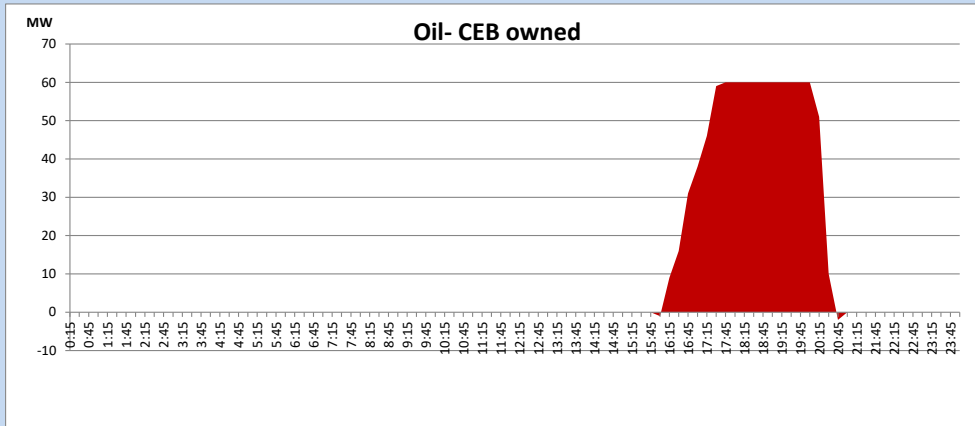
Coal Generation during

December 26, 2023



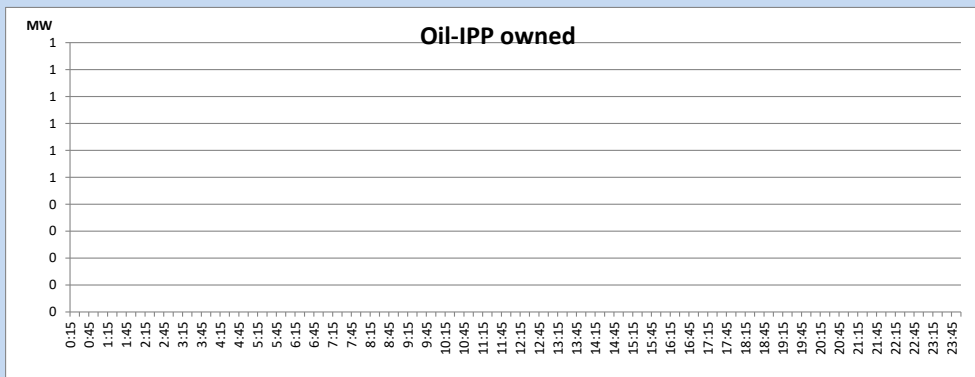
CEB Oil Plant Generation during

December 26, 2023



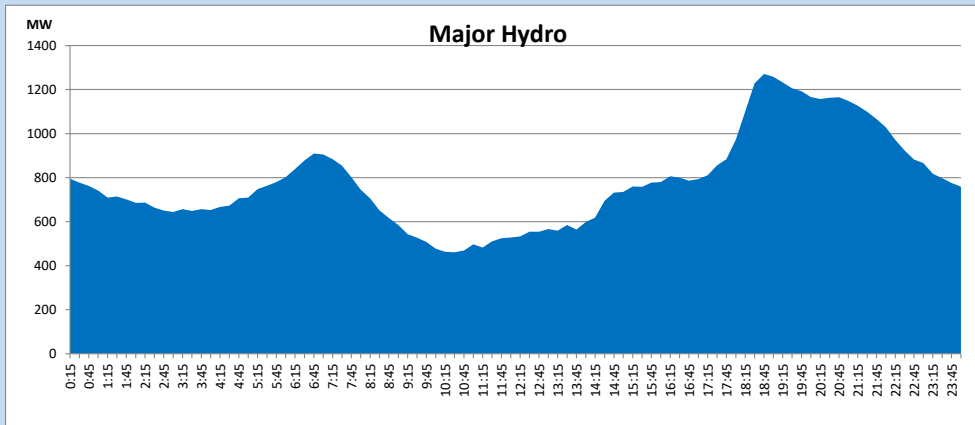
IPP Oil Plant Generation during

December 26, 2023



Major Hydro Generation during

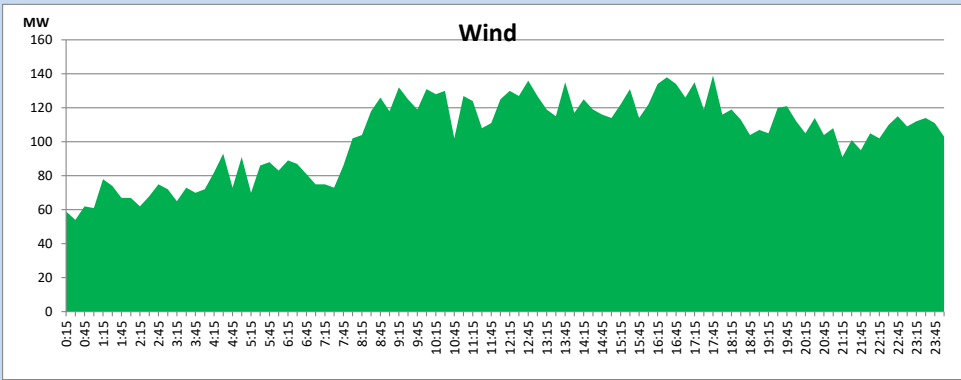
December 26, 2023



Wind Generation during

December 26, 2023

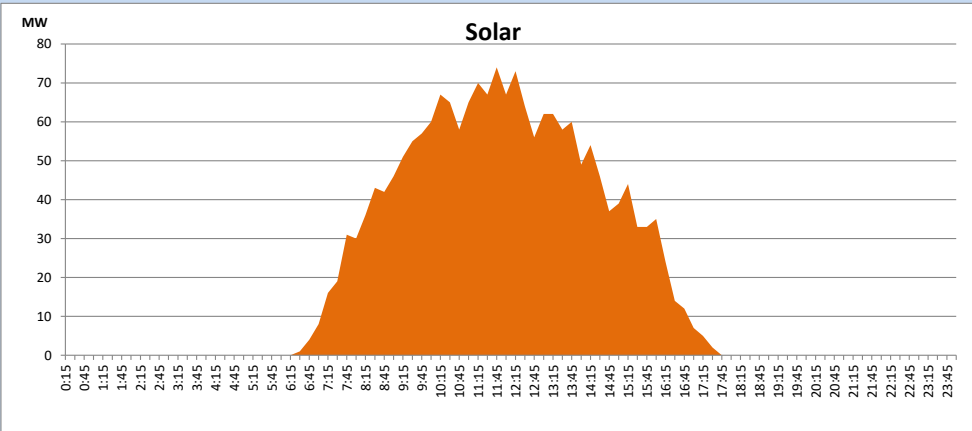
Based on Telemetered Power Stations only



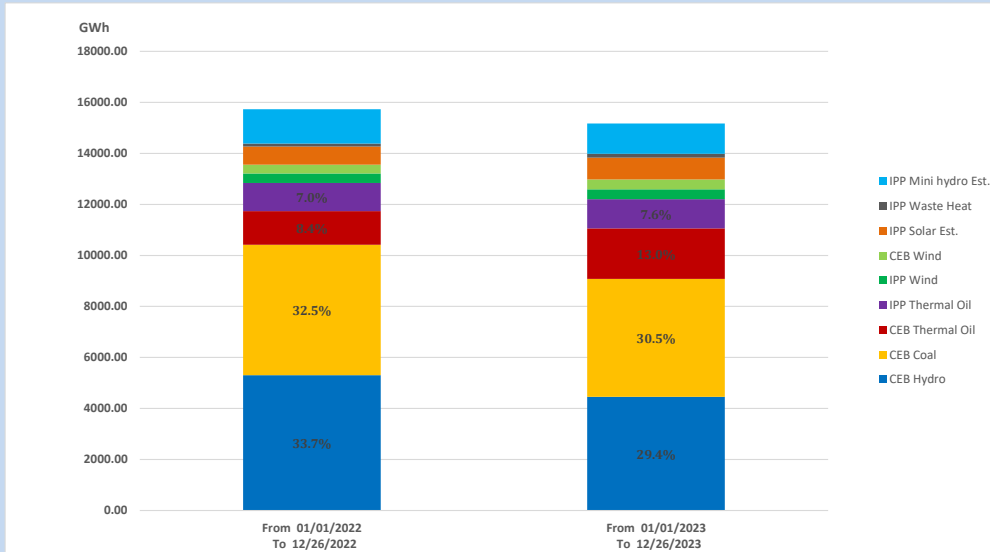
Solar Generation during

December 26, 2023

Based on Telemetered Power Stations only



15. Cumulative Dispatch Comparison with Last Year



Cumulative dispatch
From 01/01/2022 To 12/26/2022
From 01/01/2023 To 12/26/2023

15728 GWh
15173 GWh

The above figures are including contribution from roof top solar, non telemetered solar and mini hydro plants (figures have been adjusted based on the data from the CEB monthly review reports.)

Thermal Plant Fuel types

Table 08

Power Station	Primary Fuel
CEB Thermal	
Sapugaskanda 1	Heavy Fuel
Sapugaskanda 2	Heavy Fuel
Kelanitissa Small Gas Turbines	Auto Diesel
GT 7 - Kelanitissa	Auto Diesel
Kelanitissa CCY	Naphtha or Diesel
Lakvijaya 1	Coal
Lakvijaya 2	Coal
Lakvijaya 3	Coal
Uthuru Janani	Heavy Fuel
Barge CEB	Heavy Fuel
KCCPS -2	Auto Diesel

Power Station	Primary Fuel
Private Thermal	
West Coast	Auto Diesel / Heavy Fuel
ACE Matara	Heavy Fuel
ACE Embilipitiya	Heavy Fuel

Major Incidents reported during the day

December 26, 2023

- 1) New Anuradhapura -Trinco 132kV cct tripped from both ends at 22:24hrs due to the operation of distance protection. The cct was normalized at 22:37hrs. The cct tripped again and A/R from both ends at 23:30hrs due to the operation of distance protection.