

Generation and Reservoirs Statistics

December 23, 2023



PUBLIC UTILITIES COMMISSION OF SRI LANKA

1. Daily Generation Mix in MWh

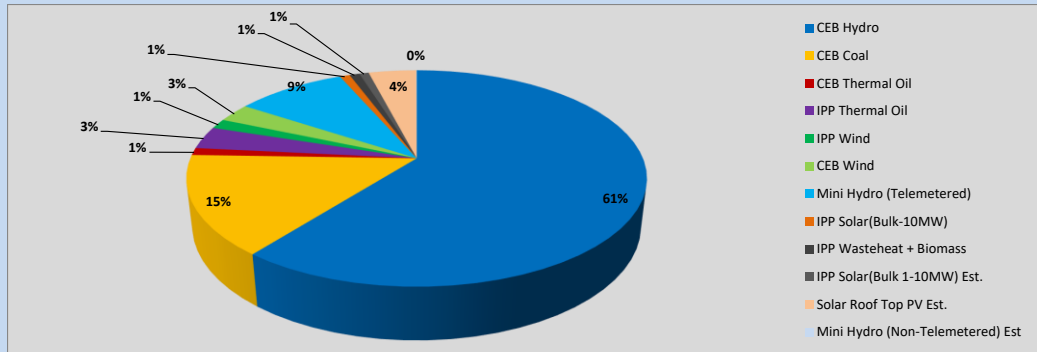


Table 01

	Generation (MWh)
CEB Hydro	23,345
CEB Coal	5,730
CEB Thermal Oil	417
IPP Thermal Oil	1,303
IPP Wind	568
CEB Wind	1,078
Mini Hydro (Telemetered)	3,554
IPP Solar (Bulk)	324
IPP Waste heat + Biomass	324
Total Generation (Excluding estimated figures)	36,643
* Estimated unserved energy	0
* Estimated Mini Hydro (Non telemetered)	16
* Estimated IPP Solar PV (Bulk 1-10MW)	304
* Estimated Solar Roof Top PV	1540
Total Generation (Including estimated figures)	38,503

* Estimated figures of CEB generation report

Table 02

	Installed Capacity (MW)
CEB Hydro	1409
CEB Coal	810
CEB Thermal Oil	781
IPP Thermal Oil (West Coast, ACE Matara and ACE Embilipitiya)	387
IPP Wind	148
CEB Wind	100
Mini Hydro	422
IPP Waste heat + Biomass	50
IPP Solar	136
Rooftop Solar (Ordinary)	277
Rooftop Solar (LT Bulk)	263
Rooftop Solar (HT Bulk)	70

Data Source - Monthly Review Report [Aug-2023]

2. Cumulative Dispatch

Following data excludes the contribution from roof top solar, non telemetered solar and mini hydro plants

Table 03 - Current Month

Category	Dispatch (GWh)	
CEB Hydro	572	63.12%
CEB Coal	116	12.77%
CEB Thermal Oil	19	2.09%
IPP Thermal	25	2.72%
SPP Wind	14	1.50%
CEB Wind	20	2.18%
Mini Hydro *	86	9.45%
IPP Solar *	47	5.21%
IPP Waste heat + BMP	9	0.97%
Total	906	

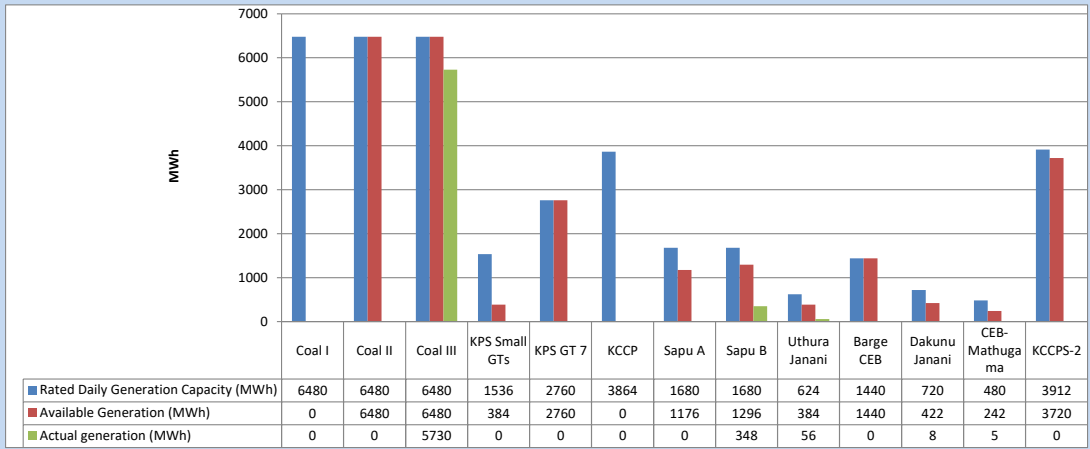
Table 04 - Current Year

Category	Dispatch (GWh)	
CEB Hydro	4,395	29.16%
CEB Coal	4,611	30.60%
CEB Thermal Oil	1,974	13.10%
IPP Thermal	1,151	7.64%
SPP Wind	382	2.53%
CEB Wind	382	2.53%
Mini Hydro *	1,175	7.79%
IPP Solar *	849	5.64%
IPP Waste heat	152	1.01%
Total	15,070	

*Including estimated contribution from non telemetered plants

3. CEB owned Thermal Plant Dispatch

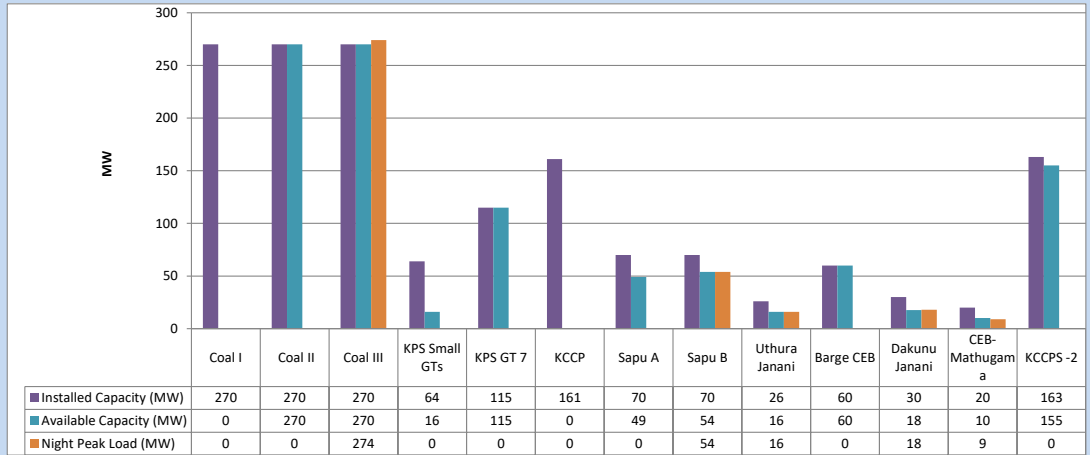
December 23, 2023



Available Generation is estimated based on plant availability at 6.00am on

December 24, 2023

4. CEB owned Thermal Plant Loading at the Night Peak

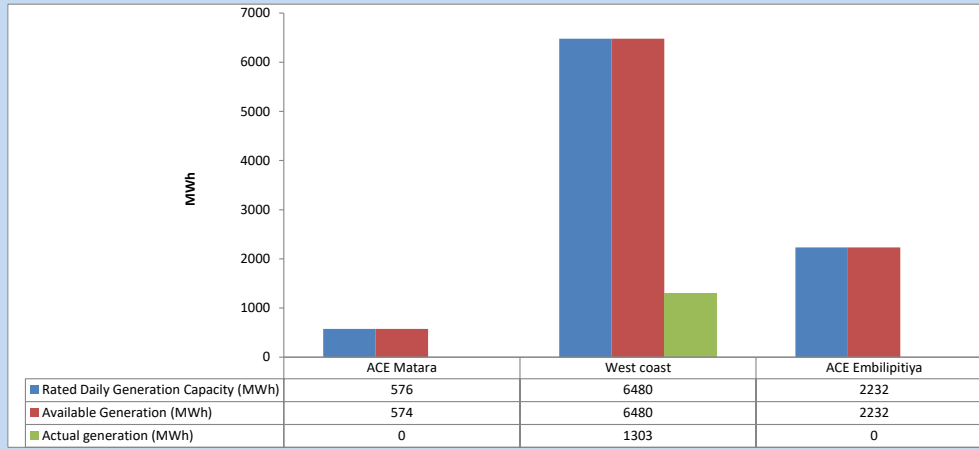


Plant availability is recorded at 6.00 am on

December 24, 2023

5. IPP owned Thermal Plant Dispatch

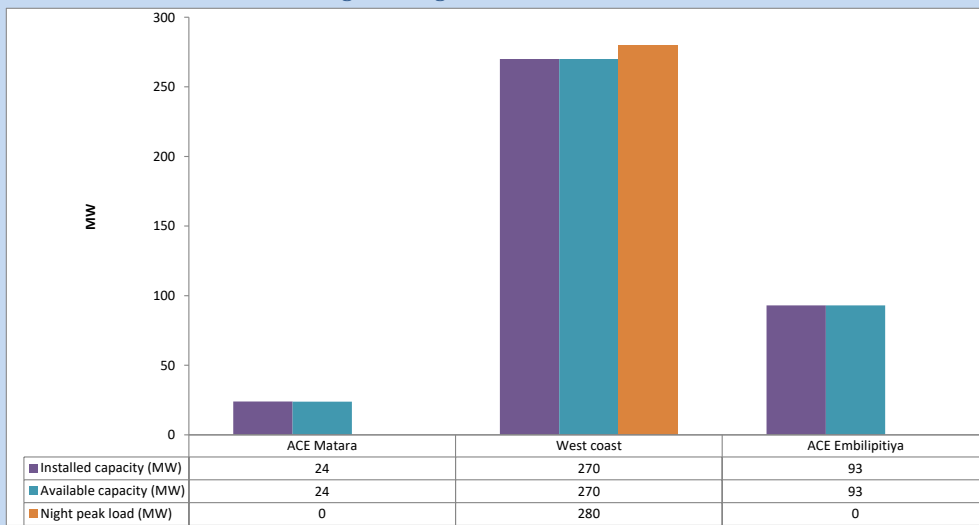
December 23, 2023



Available Generation is estimated based on plant availability at 6.00am on

December 24, 2023

6. IPP owned Thermal Plant Loading at the Night Peak

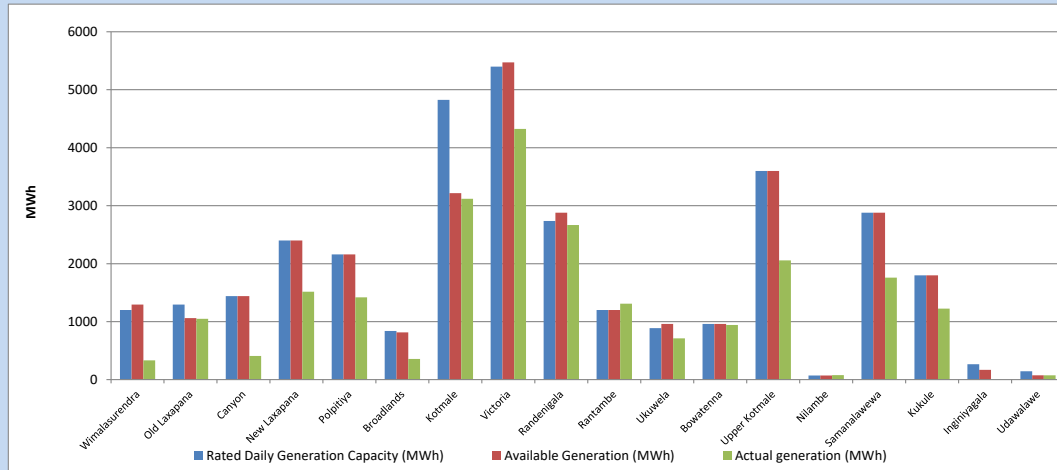


Plant availability is recorded at 6.00 am on

December 24, 2023

7. Major Hydro Plant Dispatch

December 23, 2023

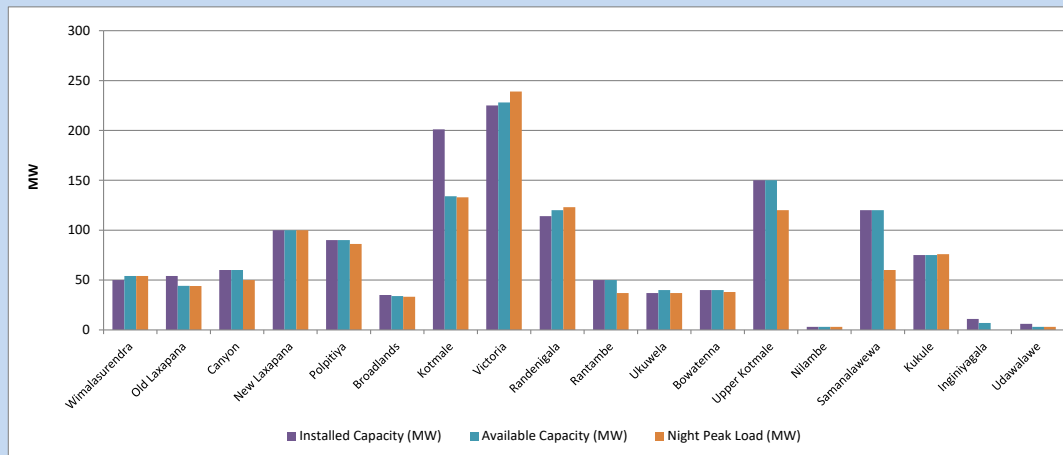


Available Generation is estimated based on plant availability at 6.00am on
Broadlands power plant is operating in the Commissioning Stage

December 24, 2023

8. Major Hydro Plant Loading at Night Peak

December 23, 2023



Plant availability is recorded at 6.00 am on
Broadlands power plant is operating in the Commissioning Stage

December 24, 2023

9. Summary of Major Plant performance

Table 05

Plant	Installed Capacity (MW)	Plant Availability (MW)	Night peak Load (MW)	Plant Dispatch (MWh)
Wimalasurendra	50	54	54	331
Old Laxapana	54	44	44	1,050
Canyon	60	60	50	407
New Laxapana	100	100	100	1,516
Polpitiya	90	90	86	1,420
Broadlands	35	34	33	356
Kotmale	201	134	133	3,120
Victoria	225	228	239	4,324
Randenigala	114	120	123	2,667
Rantambe	50	50	37	1,311
Ukuwela	37	40	37	711
Bowatenna	40	40	38	942
Upper Kotmale	150	150	120	2,057
Nilambe	3	3	3	76
Samanalawewa	120	120	60	1,758
Kukule	75	75	76	1,224
Inginiyagala	11	7	0	0
Udawalawe	6	3	3	75
Puttalam Coal I	270	0	0	0
Puttalam Coal II	270	270	0	0
Puttalam Coal III	270	270	274	5,730
KPS Small GTs	64	16	0	0
KPS GT 7	115	115	0	0
KCCP	161	0	0	0
Sapugaskanda A	70	49	0	0
Sapugaskanda B	70	54	54	348
Uthura Janani	26	16	16	56
Barge CEB	60	60	0	0
CEB-Hambantota	30	18	18	8
CEB-Mathugama	20	10	9	5
ACE Matara	24	24	0	0
Asia Power	50	0	0	0
KCCPS -2	163	155	0	0
West Coast	270	270	280	1,303
Nothern Power	36	0	0	0
ACE Embilipitiya	93	93	0	0
Total	3,483	2,772	2,097	36,659

Plant availability is the availability recorded at 6 am on

December 24, 2023

10. Contribution to the Night Peak in MW

December 23, 2023

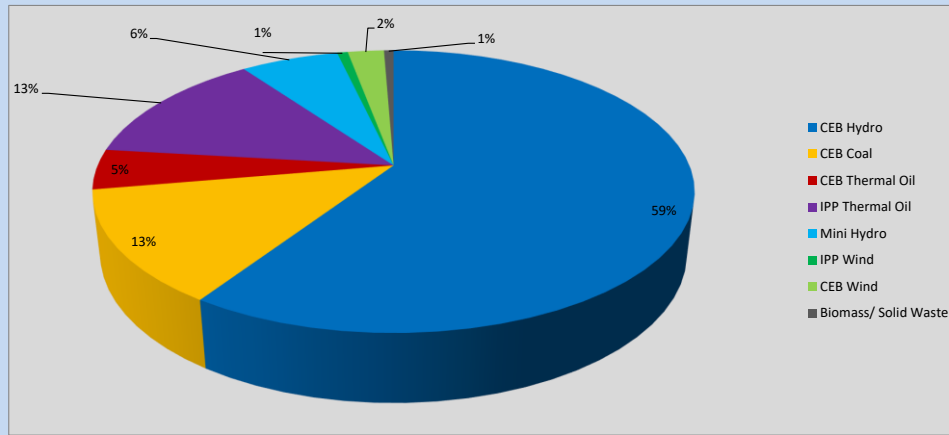


Table 06

CEB Hydro	1255	MW
CEB Coal	274	MW
CEB Thermal Oil	97	MW
IPP Thermal Oil	280	MW
Mini Hydro (Telemetered)	133	MW
IPP Wind	14.5	MW
CEB Wind	49.2	MW
Biomass/ Solid Waste	13	MW

Recorded Peak Demand Data

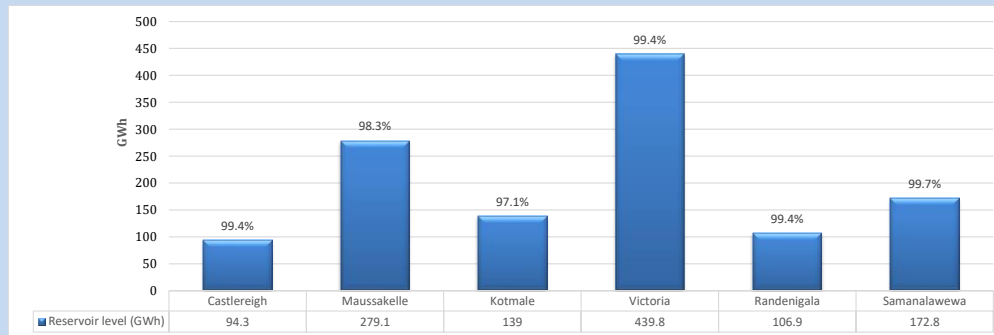
Table 07

Night Peak*	2,116	MW
Day Peak Maximum Demand	1,712	MW
Day Peak Minimum Demand	1,404	MW
Off Peak Minimum Demand	1,173	MW

Above figures are excluding contribution from roof top solar, non telemetered solar and mini hydro plants

Reservoir Levels -

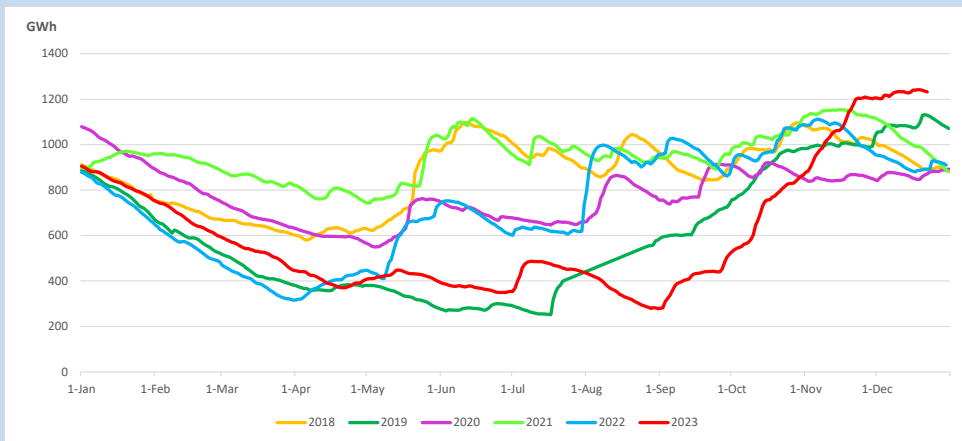
as at 06.00 Hr on December 24, 2023



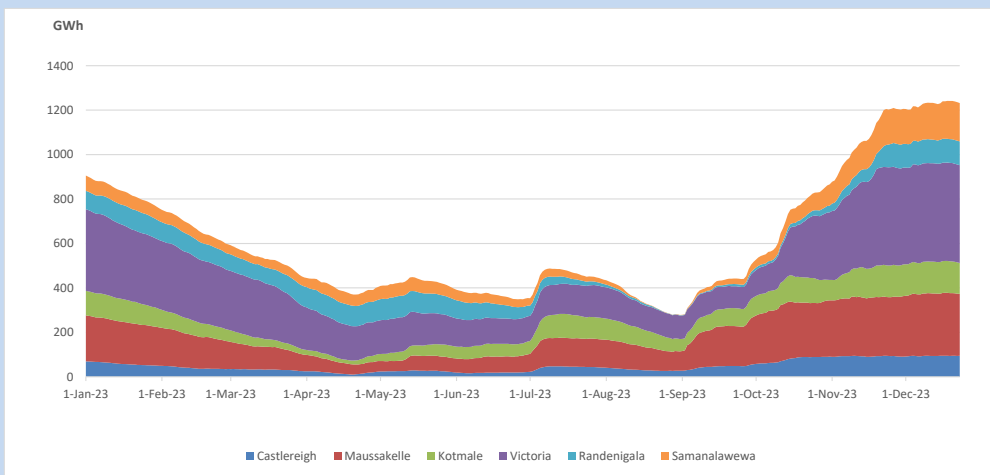
Total Reservoir Level
% of Total capacity

1231.9 GWh
98.9%

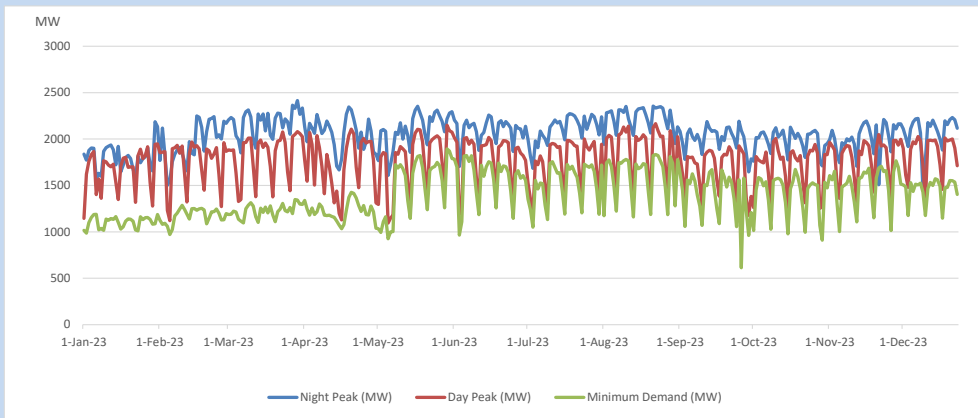
11. Comparison of Total Reservoir Storage Levels with Past Years



12. Variation of Major Hydro Reservoir Levels in the current year (GWh)



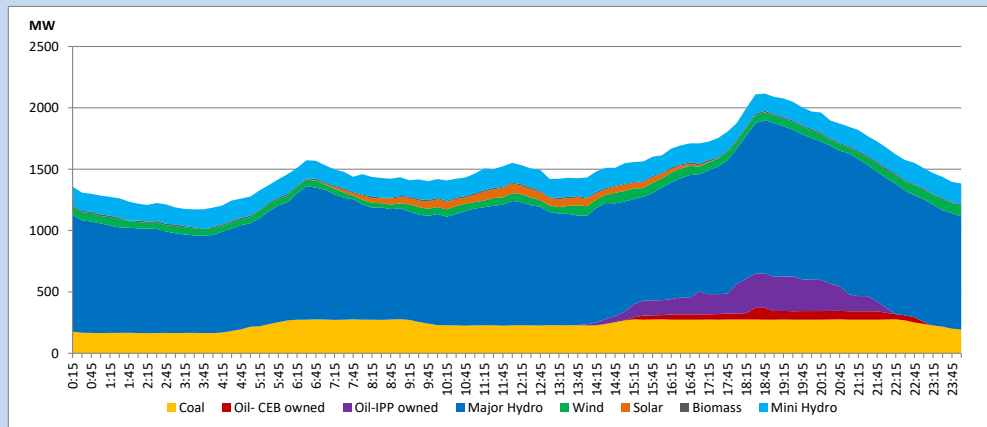
13. Variation of Demand during the current year



The above figures are excluding contribution from roof top solar, non telemetered solar and mini hydro plants

14. Daily Load Curve

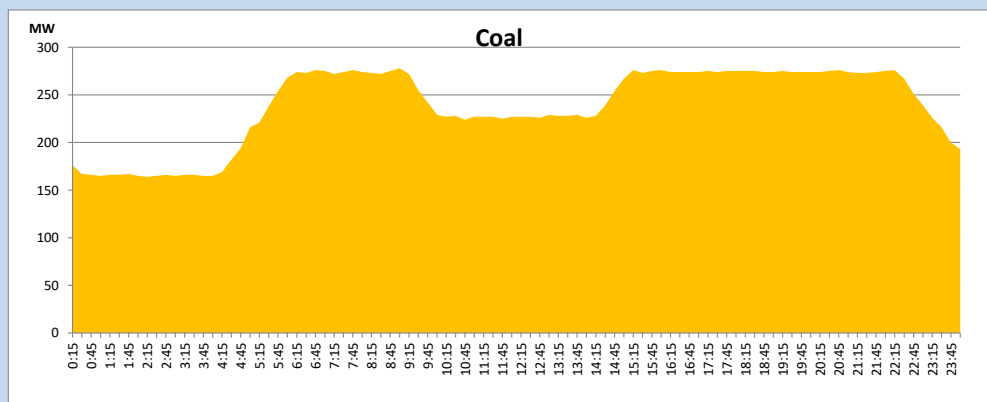
December 23, 2023



Solar and wind data is based on Telemetered Power Stations only

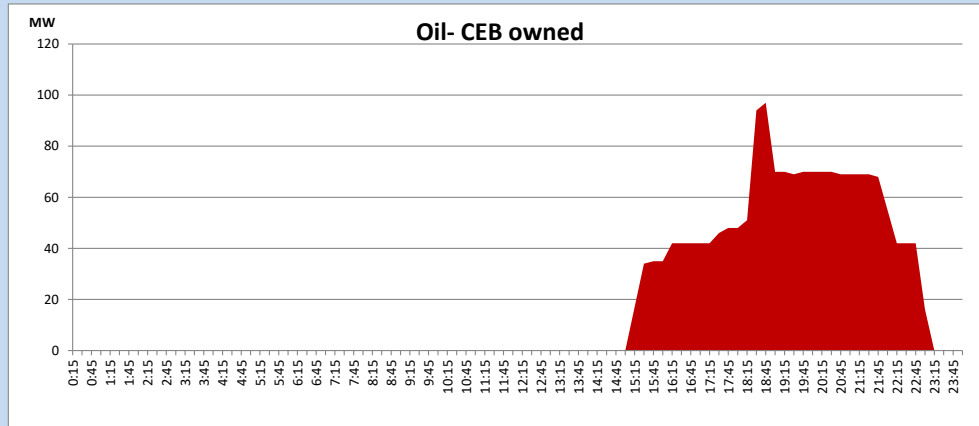
Coal Generation during

December 23, 2023



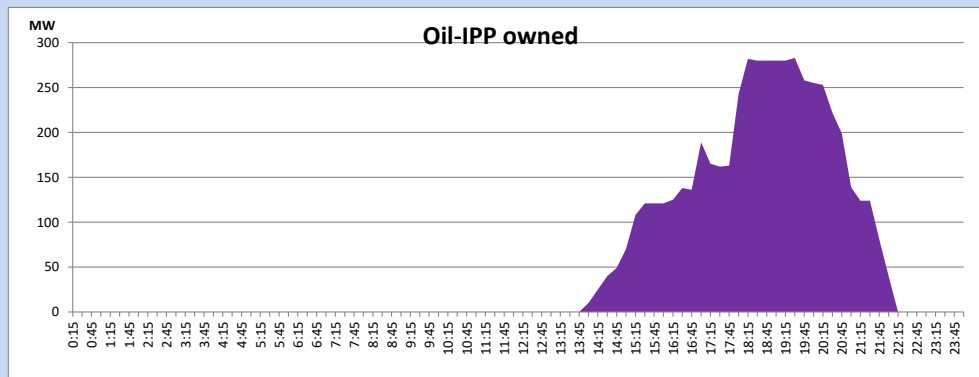
CEB Oil Plant Generation during

December 23, 2023



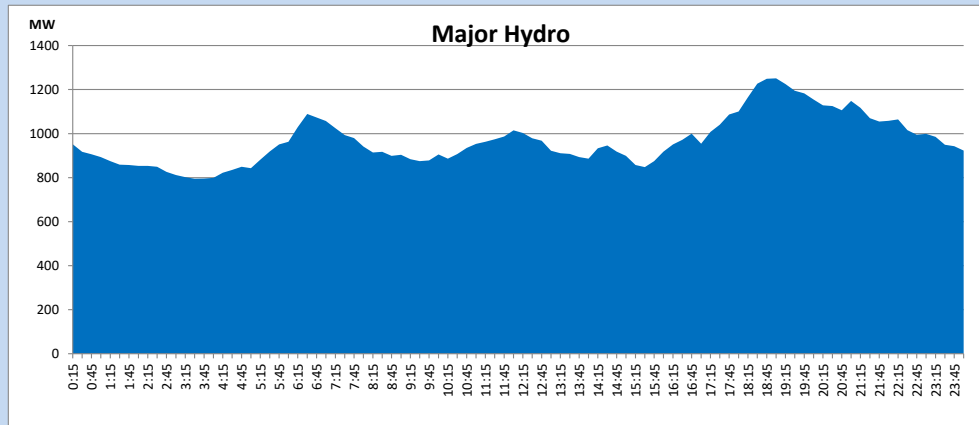
IPP Oil Plant Generation during

December 23, 2023



Major Hydro Generation during

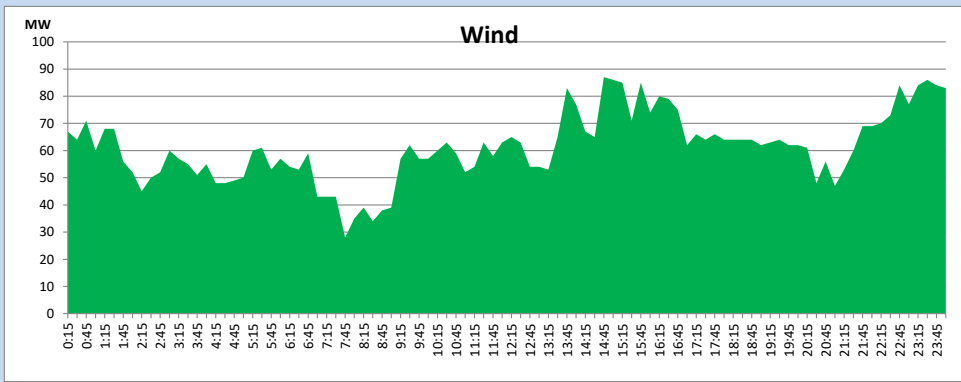
December 23, 2023



Wind Generation during

December 23, 2023

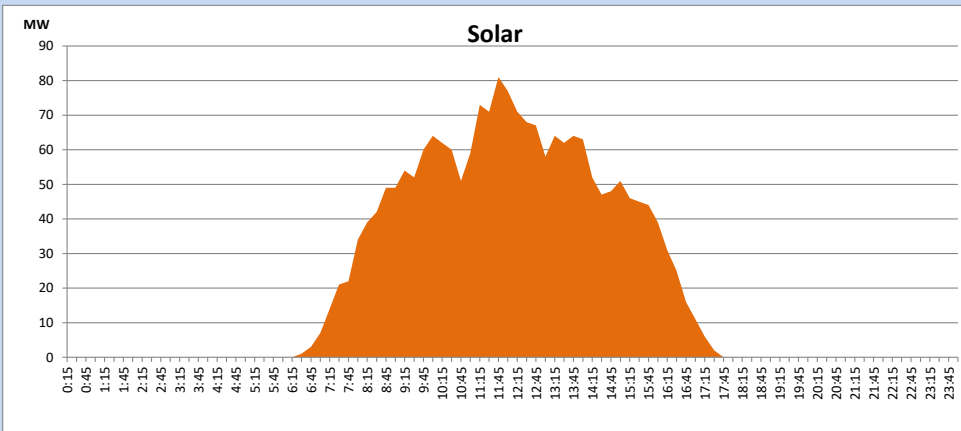
Based on Telemetered Power Stations only



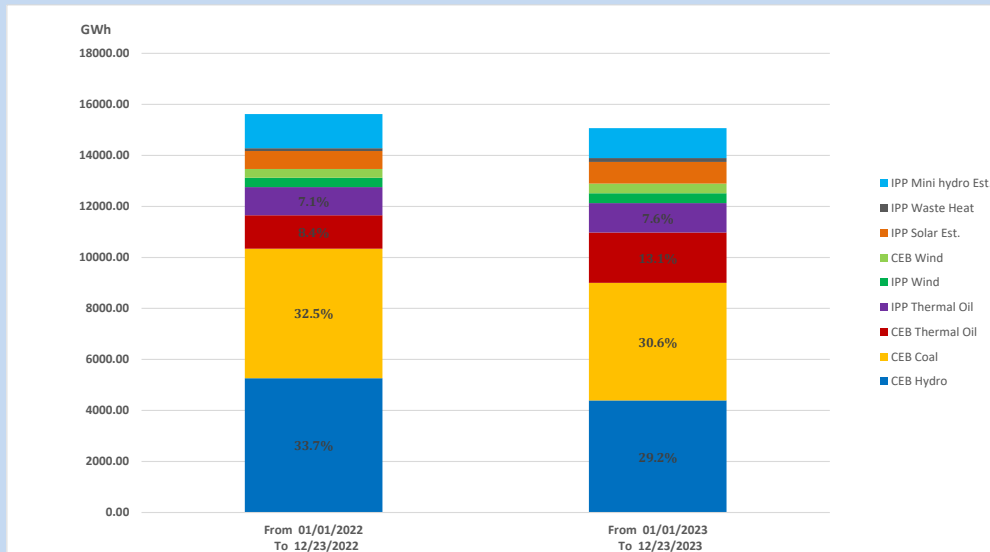
Solar Generation during

December 23, 2023

Based on Telemetered Power Stations only



15. Cumulative Dispatch Comparison with Last Year



Cumulative dispatch
From 01/01/2022 To 12/23/2022
From 01/01/2023 To 12/23/2023

15620 GWh
15070 GWh

The above figures are including contribution from roof top solar, non telemetered solar and mini hydro plants (figures have been adjusted based on the data from the CEB monthly review reports.)

Thermal Plant Fuel types

Table 08

Power Station	Primary Fuel
CEB Thermal	
Sapugaskanda 1	Heavy Fuel
Sapugaskanda 2	Heavy Fuel
Kelanitissa Small Gas Turbines	Auto Diesel
GT 7 - Kelanitissa	Auto Diesel
Kelanitissa CCY	Naphtha or Diesel
Lakvijaya 1	Coal
Lakvijaya 2	Coal
Lakvijaya 3	Coal
Uthuru Janani	Heavy Fuel
Barge CEB	Heavy Fuel
KCCPS -2	Auto Diesel

Power Station	Primary Fuel
Private Thermal	
West Coast	Auto Diesel / Heavy Fuel
ACE Matara	Heavy Fuel
ACE Embilipitiya	Heavy Fuel

Major Incidents reported during the day

December 23, 2023

- 1). Samanalawewa unit 01, which performed a forced shutdown on 21/12/2023, resumed generation at 18:47hrs
- 2) Power Barge 220kV cable manually switched off at 06:26hrs (24.12.2023) due to a Buchholz alarm in Gen T/F, resulting the plant unavailable.