

Generation and Reservoirs Statistics

December 22, 2023



PUBLIC UTILITIES COMMISSION OF SRI LANKA

1. Daily Generation Mix in MWh

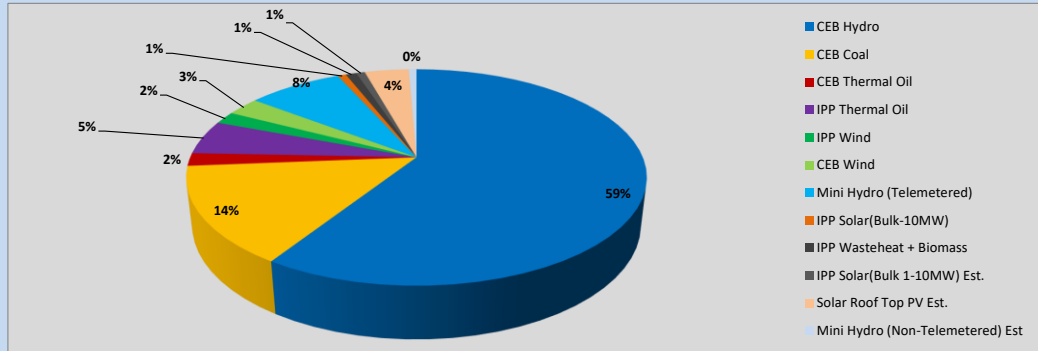


Table 01

	Generation (MWh)
CEB Hydro	24,555
CEB Coal	6,067
CEB Thermal Oil	798
IPP Thermal Oil	2,117
IPP Wind	773
CEB Wind	1,151
Mini Hydro (Telemetered)	3,302
IPP Solar (Bulk)	293
IPP Waste heat + Biomass	371
Total Generation (Excluding estimated figures)	39,427
* Estimated unserved energy	0
* Estimated Mini Hydro (Non telemetered)	268
* Estimated IPP Solar PV (Bulk 1-10MW)	304
* Estimated Solar Roof Top PV	1540
Total Generation (Including estimated figures)	41,539

* Estimated figures of CEB generation report

Table 02

	Installed Capacity (MW)
CEB Hydro	1409
CEB Coal	810
CEB Thermal Oil	781
IPP Thermal Oil (West Coast, ACE Matara and ACE Embilipitiya)	387
IPP Wind	148
CEB Wind	100
Mini Hydro	422
IPP Waste heat + Biomass	50
IPP Solar	136
Rooftop Solar (Ordinary)	277
Rooftop Solar (LT Bulk)	263
Rooftop Solar (HT Bulk)	70

Data Source - Monthly Review Report [Aug-2023]

2. Cumulative Dispatch

Following data excludes the contribution from roof top solar, non telemetered solar and mini hydro plants

Table 03 - Current Month

Category	Dispatch (GWh)	
CEB Hydro	549	63.23%
CEB Coal	110	12.67%
CEB Thermal Oil	19	2.13%
IPP Thermal	23	2.70%
SPP Wind	13	1.50%
CEB Wind	19	2.15%
Mini Hydro *	82	9.45%
IPP Solar *	45	5.20%
IPP Waste heat + BMP	8	0.97%
Total	868	

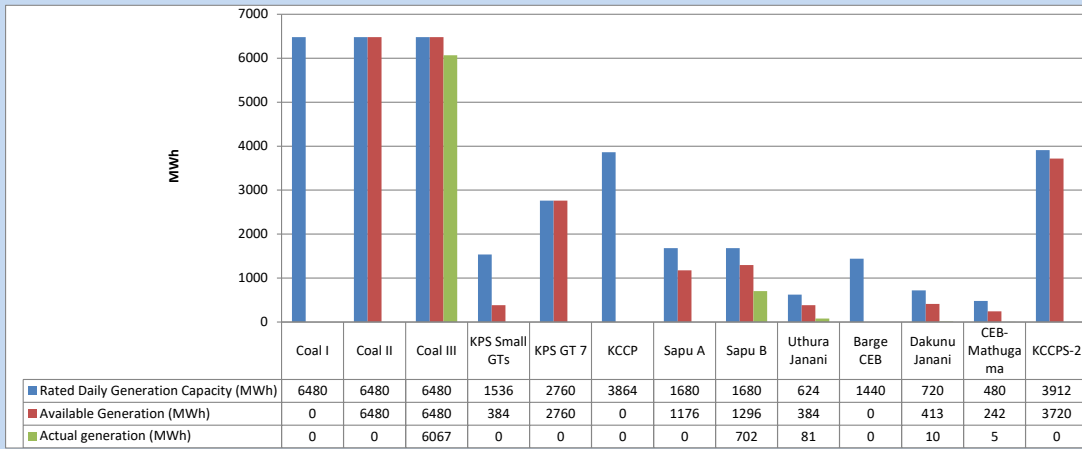
Table 04 - Current Year

Category	Dispatch (GWh)	
CEB Hydro	4,371	29.08%
CEB Coal	4,606	30.64%
CEB Thermal Oil	1,973	13.13%
IPP Thermal	1,150	7.65%
SPP Wind	381	2.54%
CEB Wind	381	2.53%
Mini Hydro *	1,171	7.79%
IPP Solar *	847	5.64%
IPP Waste heat	152	1.01%
Total	15,032	

*Including estimated contribution from non telemetered plants

3. CEB owned Thermal Plant Dispatch

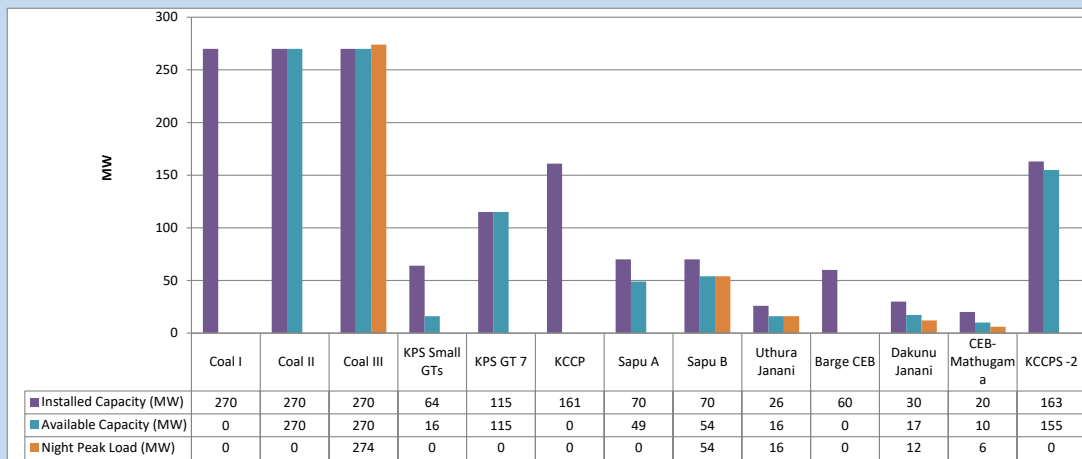
December 22, 2023



Available Generation is estimated based on plant availability at 6.00am on

December 23, 2023

4. CEB owned Thermal Plant Loading at the Night Peak

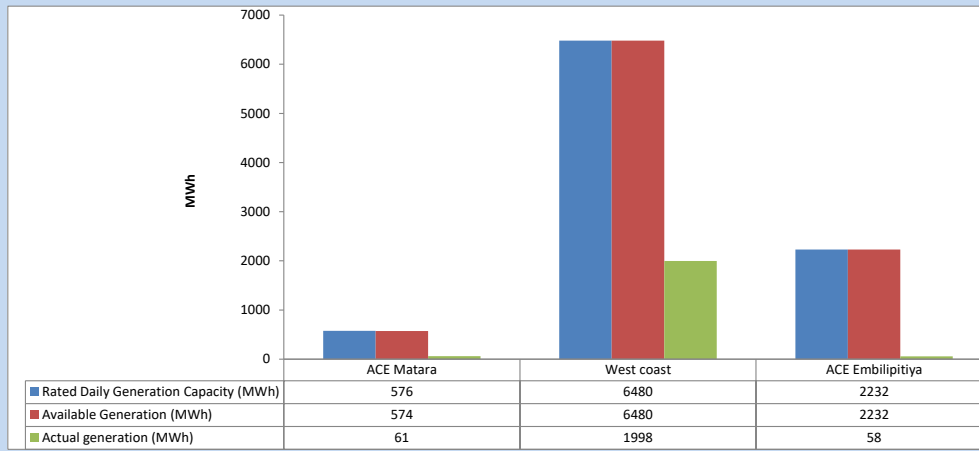


Plant availability is recorded at 6.00 am on

December 23, 2023

5. IPP owned Thermal Plant Dispatch

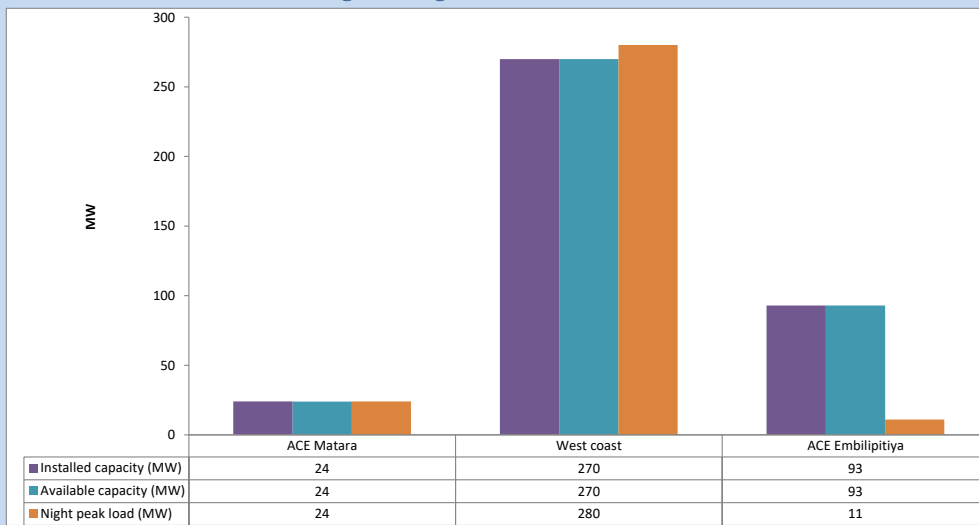
December 22, 2023



Available Generation is estimated based on plant availability at 6.00am on

December 23, 2023

6. IPP owned Thermal Plant Loading at the Night Peak

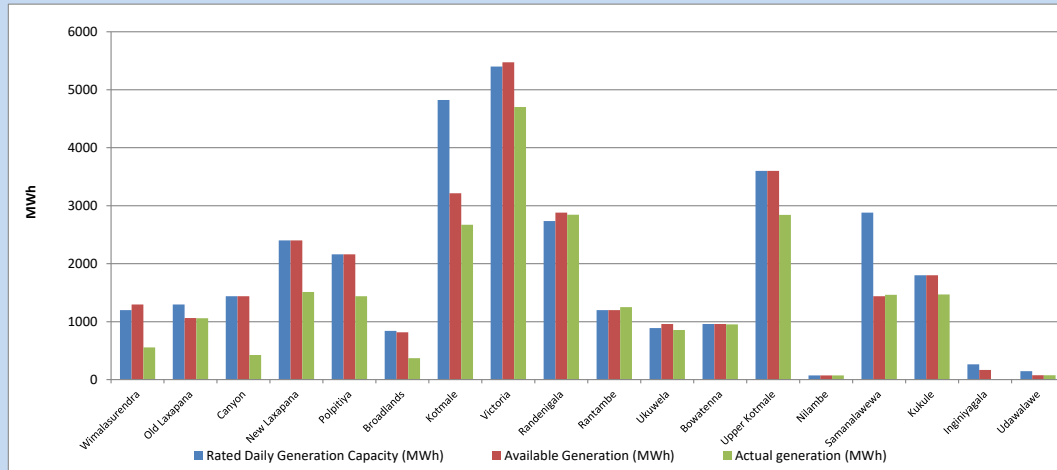


Plant availability is recorded at 6.00 am on

December 23, 2023

7. Major Hydro Plant Dispatch

December 22, 2023

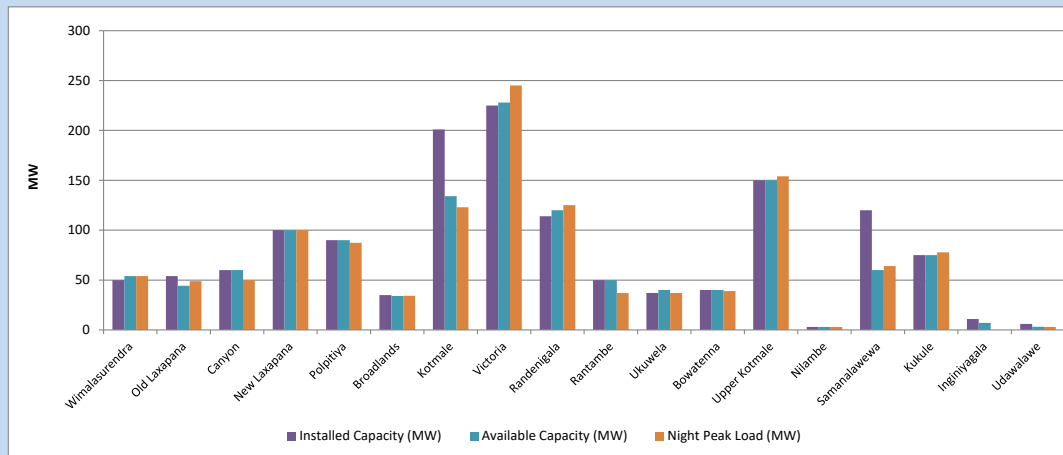


Available Generation is estimated based on plant availability at 6.00am on
Broadlands power plant is operating in the Commissioning Stage

December 23, 2023

8. Major Hydro Plant Loading at Night Peak

December 22, 2023



Plant availability is recorded at 6.00 am on
Broadlands power plant is operating in the Commissioning Stage

December 23, 2023

9. Summary of Major Plant performance

Table 05

Plant	Installed Capacity (MW)	Plant Availability (MW)	Night peak Load (MW)	Plant Dispatch (MWh)
Wimalasurendra	50	54	54	555
Old Laxapana	54	44	49	1,060
Canyon	60	60	50	424
New Laxapana	100	100	100	1,513
Polpitiya	90	90	87	1,440
Broadlands	35	34	34	370
Kotmale	201	134	123	2,670
Victoria	225	228	245	4,701
Randenigala	114	120	125	2,843
Rantambe	50	50	37	1,251
Ukuwela	37	40	37	856
Bowatenna	40	40	39	952
Upper Kotmale	150	150	154	2,841
Nilambe	3	3	3	72
Samanalawewa	120	60	64	1,464
Kukule	75	75	78	1,469
Inginiyagala	11	7	0	0
Udawalawe	6	3	3	75
Puttalam Coal I	270	0	0	0
Puttalam Coal II	270	270	0	0
Puttalam Coal III	270	270	274	6,067
KPS Small GTs	64	16	0	0
KPS GT 7	115	115	0	0
KCCP	161	0	0	0
Sapugaskanda A	70	49	0	0
Sapugaskanda B	70	54	54	702
Uthura Janani	26	16	16	81
Barge CEB	60	0	0	0
CEB-Hambantota	30	17	12	10
CEB-Mathugama	20	10	6	5
ACE Matara	24	24	24	61
Asia Power	50	0	0	0
KCCPS -2	163	155	0	0
West Coast	270	270	280	1,998
Nothern Power	36	0	0	0
ACE Embilipitiya	93	93	11	58
Total	3,483	2,652	2,190	39,696

Plant availability is the availability recorded at 6 am on

December 23, 2023

10. Contribution to the Night Peak in MW

December 22, 2023

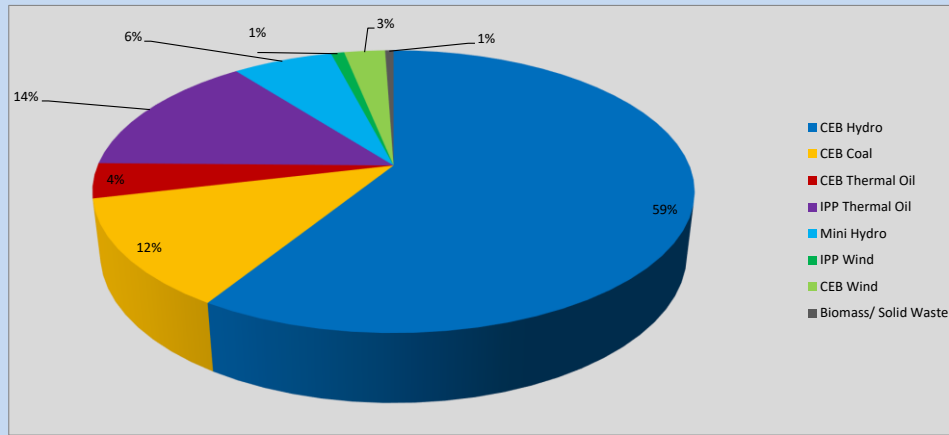


Table 06

CEB Hydro	1300	MW
CEB Coal	274	MW
CEB Thermal Oil	88	MW
IPP Thermal Oil	315	MW
Mini Hydro (Telemetered)	142	MW
IPP Wind	18.9	MW
CEB Wind	58	MW
Biomass/ Solid Waste	12	MW

Recorded Peak Demand Data

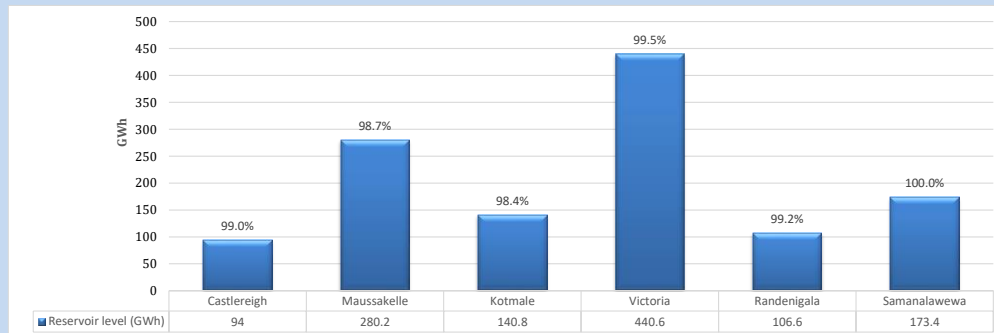
Table 07

Night Peak*	2,208	MW
Day Peak Maximum Demand	1,904	MW
Day Peak Minimum Demand	1,536	MW
Off Peak Minimum Demand	1,190	MW

Above figures are excluding contribution from roof top solar, non telemetered solar and mini hydro plants

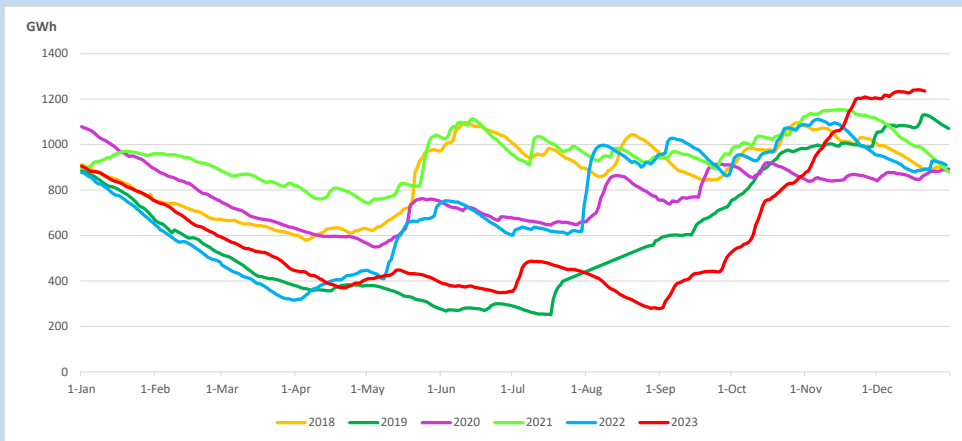
Reservoir Levels -

as at 06.00 Hr on December 23, 2023

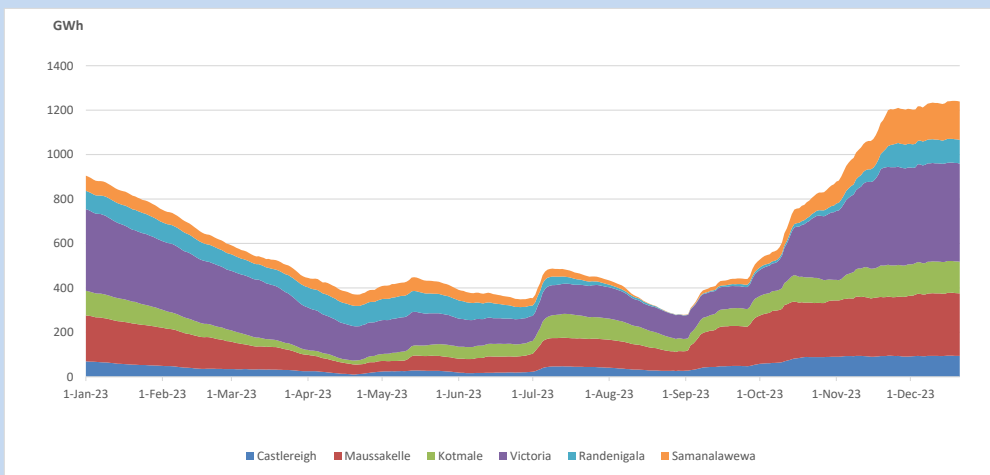


Total Reservoir Level 1235.6 GWh
% of Total capacity 99.2%

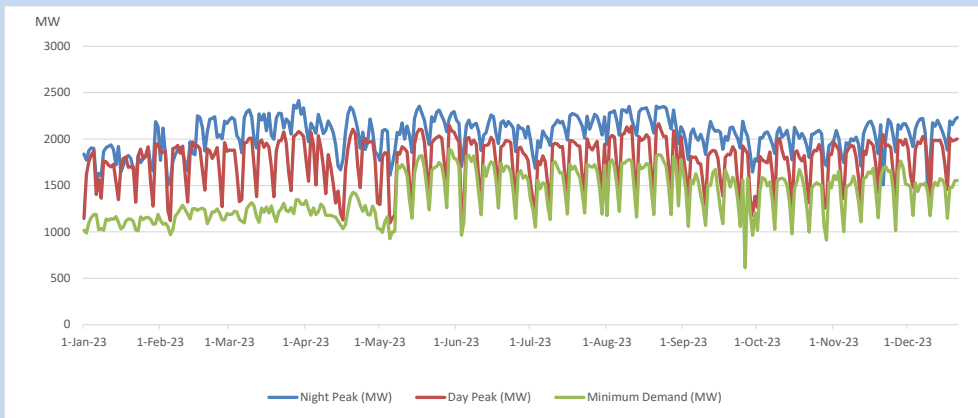
11. Comparison of Total Reservoir Storage Levels with Past Years



12. Variation of Major Hydro Reservoir Levels in the current year (GWh)



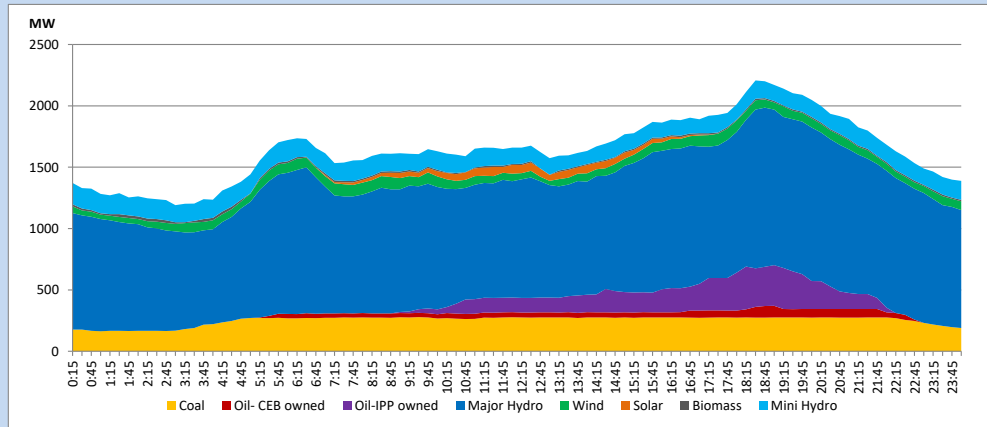
13. Variation of Demand during the current year



The above figures are excluding contribution from roof top solar, non telemetered solar and mini hydro plants

14. Daily Load Curve

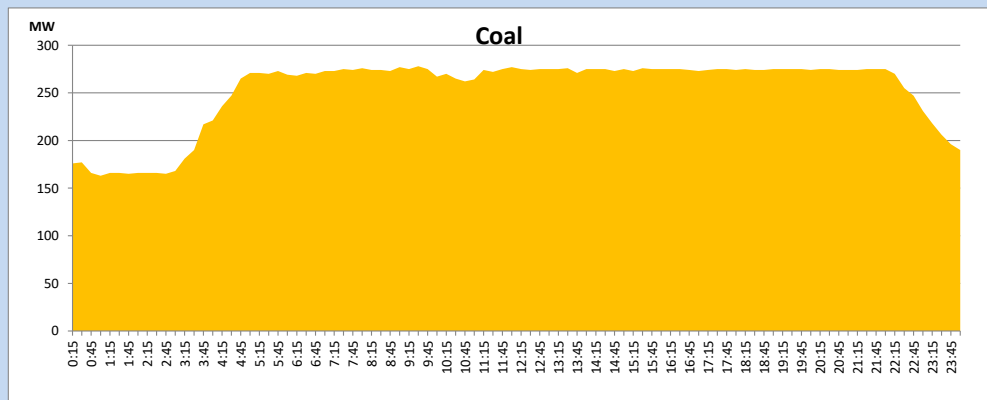
December 22, 2023



Solar and wind data is based on Telemetered Power Stations only

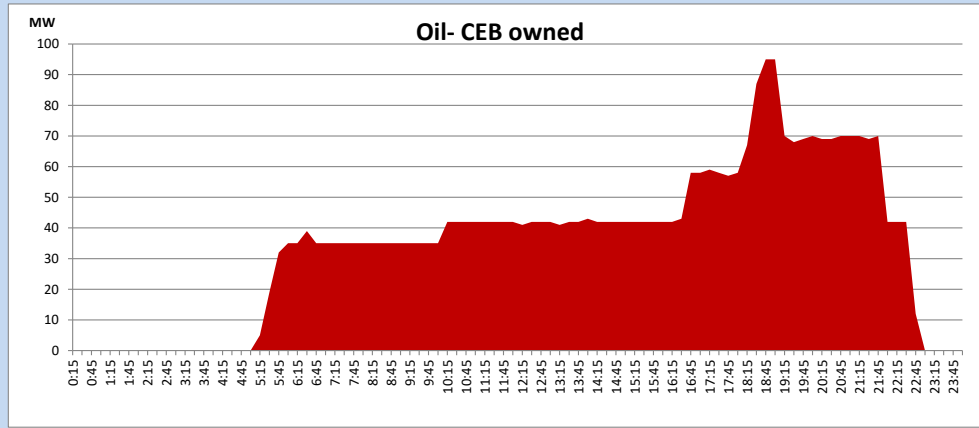
Coal Generation during

December 22, 2023



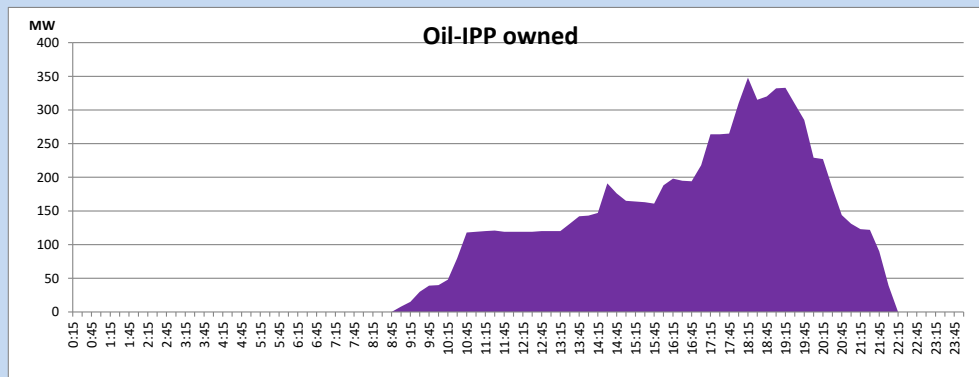
CEB Oil Plant Generation during

December 22, 2023



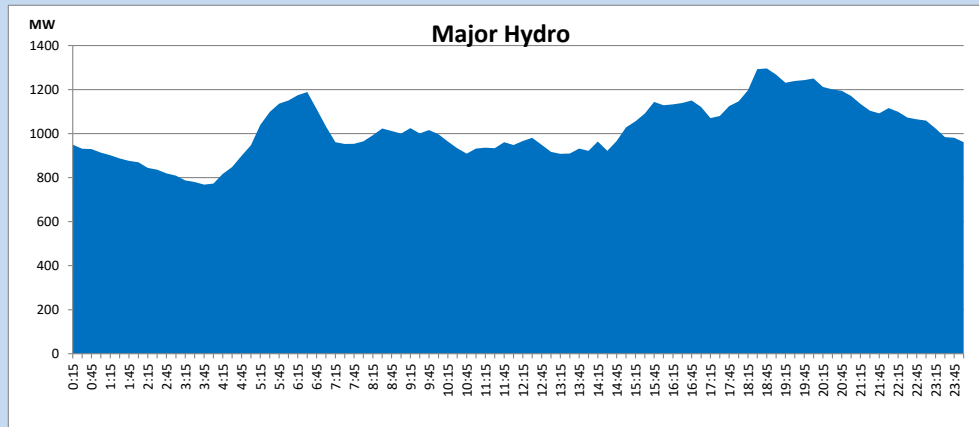
IPP Oil Plant Generation during

December 22, 2023



Major Hydro Generation during

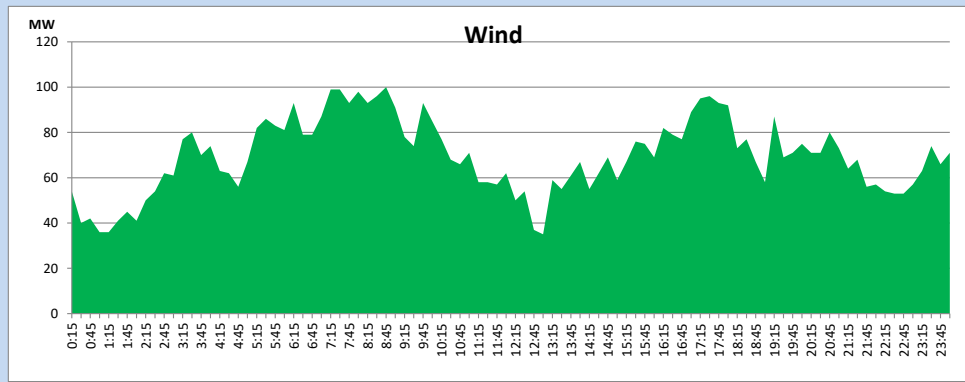
December 22, 2023



Wind Generation during

December 22, 2023

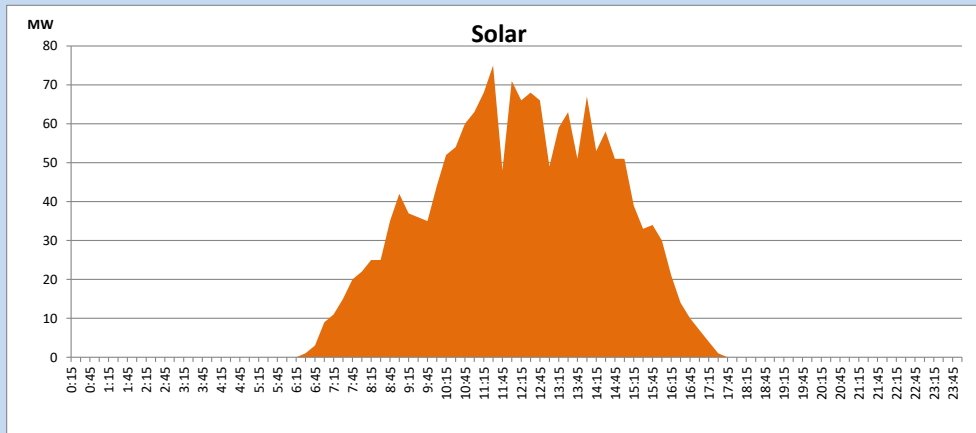
Based on Telemetered Power Stations only



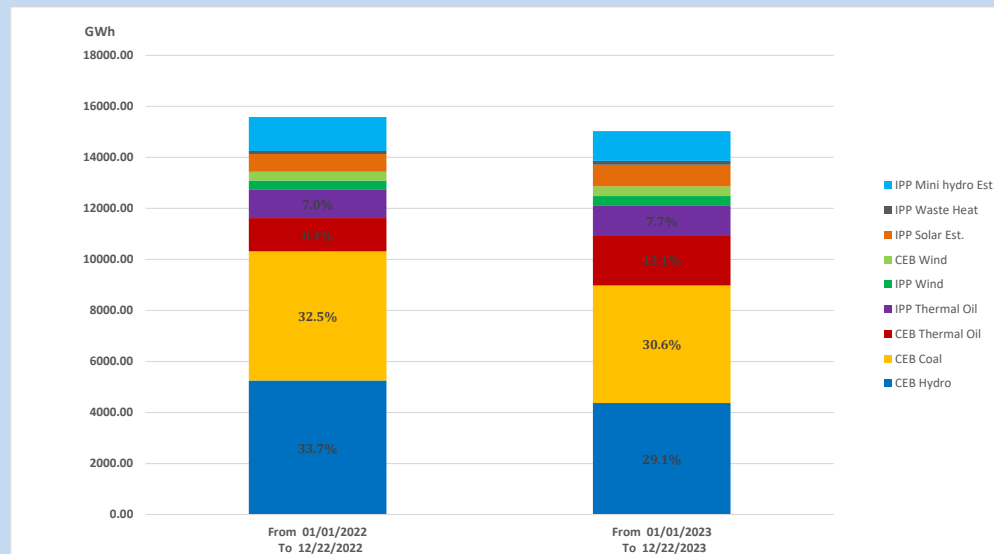
Solar Generation during

December 22, 2023

Based on Telemetered Power Stations only



15. Cumulative Dispatch Comparison with Last Year



Cumulative dispatch
From 01/01/2022 To 12/22/2022
From 01/01/2023 To 12/22/2023

15581 GWh
15032 GWh

The above figures are including contribution from roof top solar, non telemetered solar and mini hydro plants (figures have been adjusted based on the data from the CEB monthly review reports.)

Thermal Plant Fuel types

Table 08

Power Station	Primary Fuel
CEB Thermal	
Sapugaskanda 1	Heavy Fuel
Sapugaskanda 2	Heavy Fuel
Kelanitissa Small Gas Turbines	Auto Diesel
GT 7 - Kelanitissa	Auto Diesel
Kelanitissa CCY	Naphtha or Diesel
Lakvijaya 1	Coal
Lakvijaya 2	Coal
Lakvijaya 3	Coal
Uthuru Janani	Heavy Fuel
Barge CEB	Heavy Fuel
KCCPS -2	Auto Diesel

Power Station	Primary Fuel
Private Thermal	
West Coast	Auto Diesel / Heavy Fuel
ACE Matara	Heavy Fuel
ACE Embilipitiya	Heavy Fuel

Major Incidents reported during the day

December 22, 2023

- 1). Valachchenai GSS 132/33kV T/F 01 tripped at 08:47hrs due to the operation of under voltage protection. The T/F was normalized at 09:16hrs.