

# Generation and Reservoirs Statistics

December 21, 2023



**PUBLIC UTILITIES COMMISSION OF SRI LANKA**

## 1. Daily Generation Mix in MWh

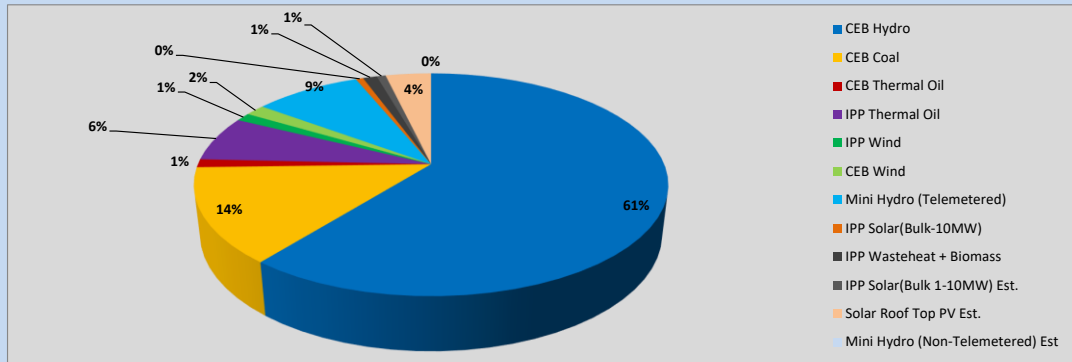


Table 01

	Generation (MWh)
CEB Hydro	25,248
CEB Coal	5,733
CEB Thermal Oil	489
IPP Thermal Oil	2,728
IPP Wind	501
CEB Wind	671
Mini Hydro (Telemetered)	3,615
IPP Solar (Bulk)	252
IPP Waste heat + Biomass	473
<b>Total Generation (Excluding estimated figures)</b>	<b>39,710</b>
* Estimated unserved energy	0
* Estimated Mini Hydro (Non telemetered)	-
* Estimated IPP Solar PV (Bulk 1-10MW)	304
* Estimated Solar Roof Top PV	1540
<b>Total Generation (Including estimated figures)</b>	<b>41,554</b>

\* Estimated figures of CEB generation report

Table 02

	Installed Capacity (MW)
CEB Hydro	1409
CEB Coal	810
CEB Thermal Oil	781
IPP Thermal Oil (West Coast, ACE Matara and ACE Embilipitiya)	387
IPP Wind	148
CEB Wind	100
Mini Hydro	422
IPP Waste heat + Biomass	50
IPP Solar	136
Rooftop Solar (Ordinary)	277
Rooftop Solar (LT Bulk)	263
Rooftop Solar (HT Bulk)	70

Data Source - Monthly Review Report [Aug-2023]

## 2. Cumulative Dispatch

Following data excludes the contribution from roof top solar, non telemetered solar and mini hydro plants

Table 03 - Current Month

Category	Dispatch (GWh)	
CEB Hydro	524	63.44%
CEB Coal	104	12.58%
CEB Thermal Oil	18	2.14%
IPP Thermal	21	2.57%
SPP Wind	12	1.48%
CEB Wind	18	2.12%
Mini Hydro *	78	9.50%
IPP Solar *	43	5.20%
IPP Waste heat + BMP	8	0.98%
<b>Total</b>	<b>826</b>	

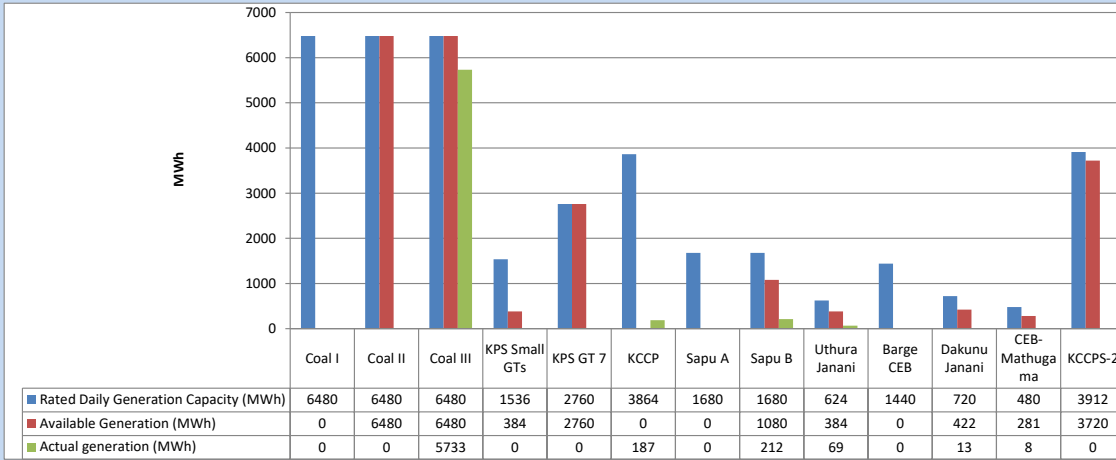
Table 04 - Current Year

Category	Dispatch (GWh)	
CEB Hydro	4,347	29.00%
CEB Coal	4,599	30.68%
CEB Thermal Oil	1,972	13.16%
IPP Thermal	1,148	7.66%
SPP Wind	380	2.54%
CEB Wind	380	2.53%
Mini Hydro *	1,167	7.79%
IPP Solar *	845	5.64%
IPP Waste heat	151	1.01%
<b>Total</b>	<b>14,990</b>	

\*Including estimated contribution from non telemetered plants

### 3. CEB owned Thermal Plant Dispatch

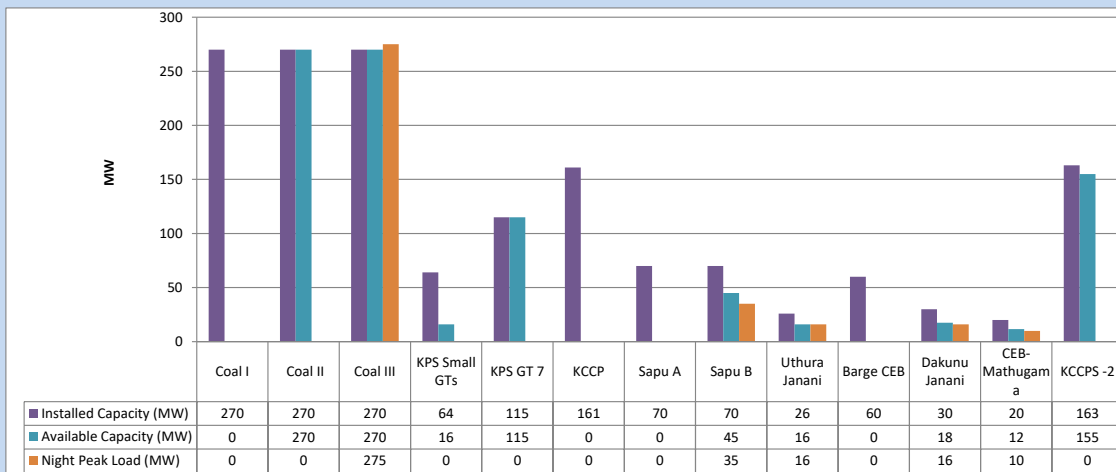
December 21, 2023



Available Generation is estimated based on plant availability at 6.00am on

December 22, 2023

### 4. CEB owned Thermal Plant Loading at the Night Peak

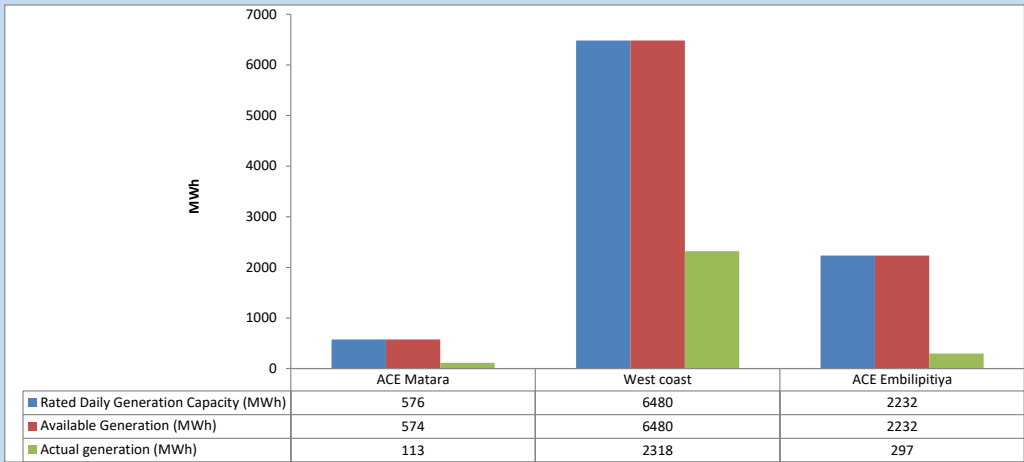


Plant availability is recorded at 6.00 am on

December 22, 2023

### 5. IPP owned Thermal Plant Dispatch

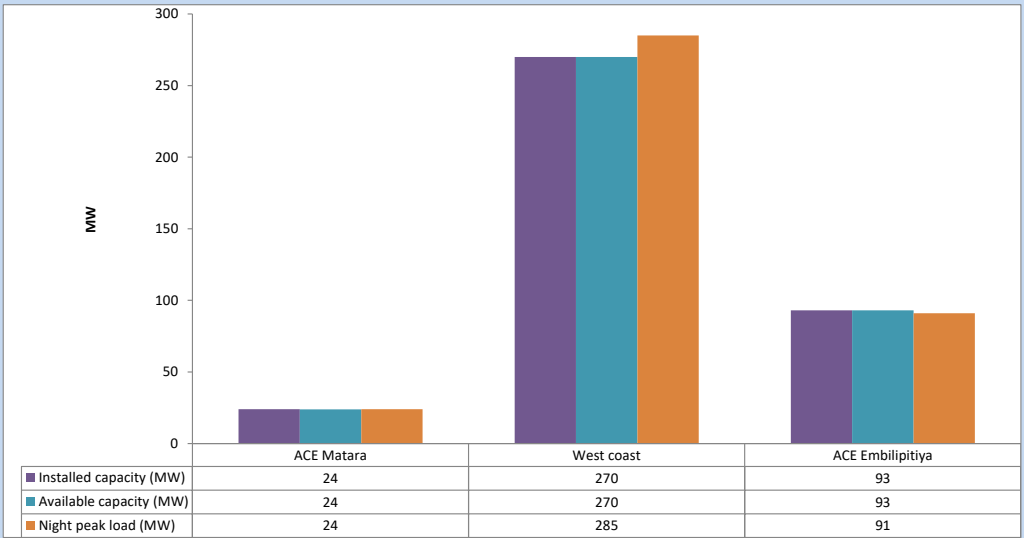
December 21, 2023



Available Generation is estimated based on plant availability at 6.00am on

December 22, 2023

### 6. IPP owned Thermal Plant Loading at the Night Peak

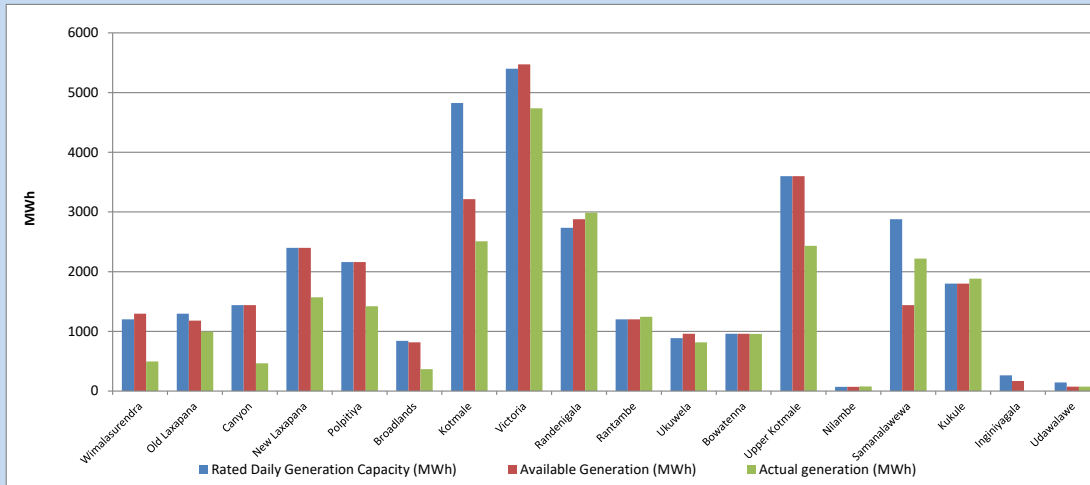


Plant availability is recorded at 6.00 am on

December 22, 2023

### 7. Major Hydro Plant Dispatch

December 21, 2023

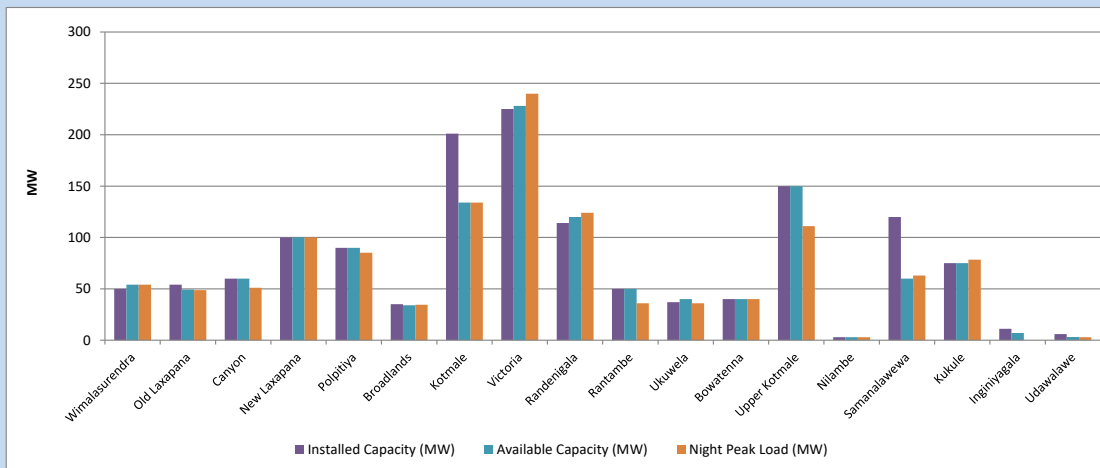


Available Generation is estimated based on plant availability at 6.00am on December 22, 2023  
Broadlands power plant is operating in the Commissioning Stage

December 22, 2023

### 8. Major Hydro Plant Loading at Night Peak

December 21, 2023



Plant availability is recorded at 6.00 am on December 22, 2023  
Broadlands power plant is operating in the Commissioning Stage

December 22, 2023

## 9. Summary of Major Plant performance

Table 05

Plant	Installed Capacity	Plant Availability	Night peak Load	Plant Dispatch
	(MW)	(MW)	(MW)	(MWh)
Wimalasurendra	50	54	54	495
Old Laxapana	54	49	49	997
Canyon	60	60	51	464
New Laxapana	100	100	100	1,571
Polpitiya	90	90	85	1,420
Broadlands	35	34	35	367
Kotmale	201	134	134	2,510
Victoria	225	228	240	4,736
Randenigala	114	120	124	2,988
Rantambe	50	50	36	1,243
Ukuwela	37	40	36	815
Bowatenna	40	40	40	958
Upper Kotmale	150	150	111	2,433
Nilambe	3	3	3	76
Samanalawewa	120	60	63	2,220
Kukule	75	75	78	1,882
Inginiyagala	11	7	0	0
Udawalawe	6	3	3	74
Puttalam Coal I	270	0	0	0
Puttalam Coal II	270	270	0	0
Puttalam Coal III	270	270	275	5,733
KPS Small GTs	64	16	0	0
KPS GT 7	115	115	0	0
KCCP	161	0	0	187
Sapugaskanda A	70	0	0	0
Sapugaskanda B	70	45	35	212
Uthura Janani	26	16	16	69
Barge CEB	60	0	0	0
CEB-Hambantota	30	18	16	13
CEB-Mathugama	20	12	10	8
ACE Matara	24	24	24	113
Asia Power	50	0	0	0
KCCPS -2	163	155	0	0
West Coast	270	270	285	2,318
Nothern Power	36	0	0	0
ACE Embilipitiya	93	93	91	297
<b>Total</b>	<b>3,483</b>	<b>2,601</b>	<b>2,215</b>	<b>39,711</b>

Plant availability is the availability recorded at 6 am on

December 22, 2023

### 10. Contribution to the Night Peak in MW

December 21, 2023

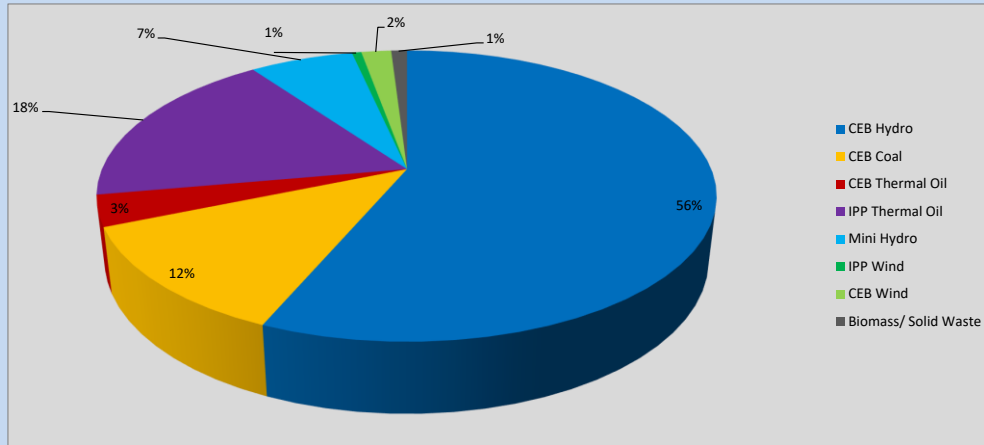


Table 06

CEB Hydro	1259	MW
CEB Coal	275	MW
CEB Thermal Oil	77	MW
IPP Thermal Oil	400	MW
Mini Hydro (Telemetered)	144	MW
IPP Wind	13.1	MW
CEB Wind	41.5	MW
Biomass/ Solid Waste	22	MW

#### Recorded Peak Demand Data

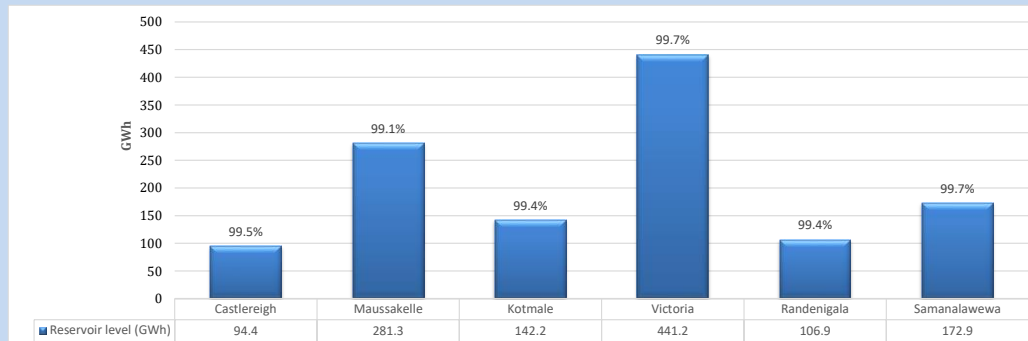
Table 07

Night Peak*	2,232	MW
Day Peak Maximum Demand	2,001	MW
Day Peak Minimum Demand	1,551	MW
Off Peak Minimum Demand	1,170	MW

Above figures are excluding contribution from roof top solar, non telemetered solar and mini hydro plants

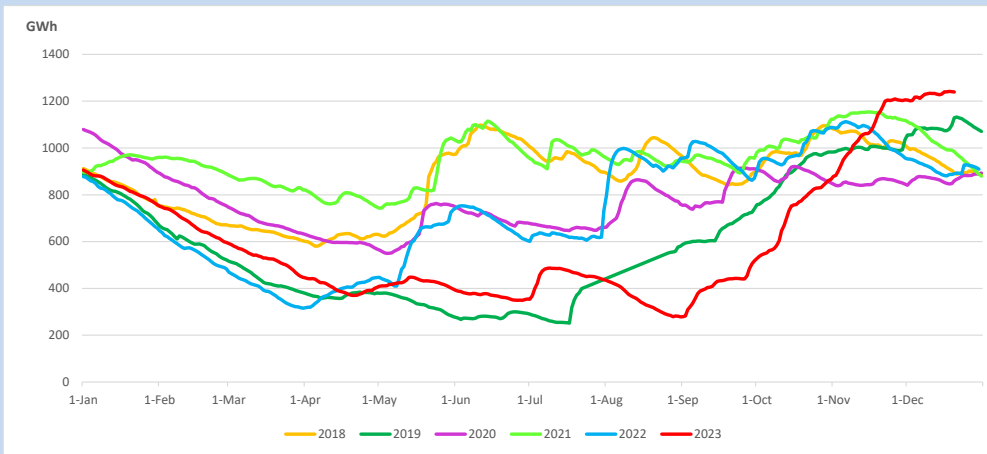
#### Reservoir Levels -

as at 06.00 Hr on December 22, 2023

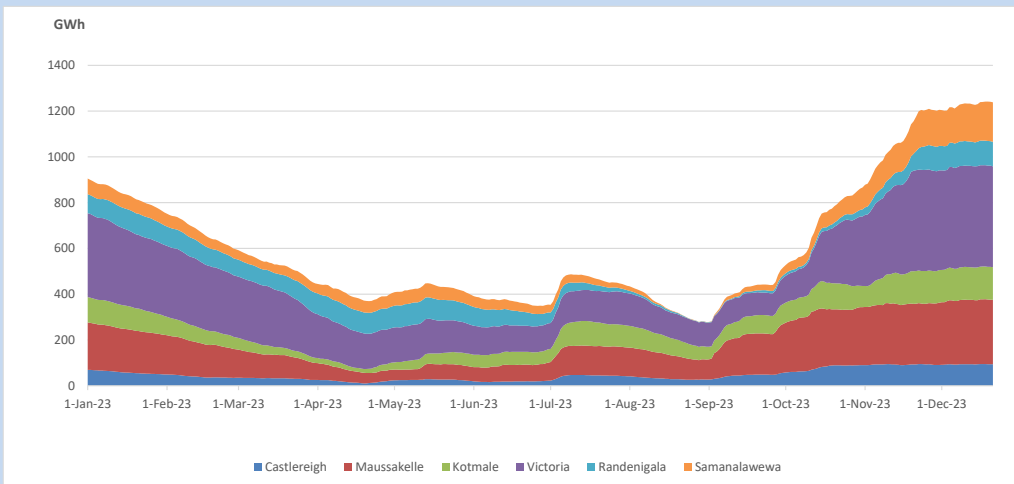


Total Reservoir Level 1238.9 GWh  
% of Total capacity 99.5%

### 11. Comparison of Total Reservoir Storage Levels with Past Years

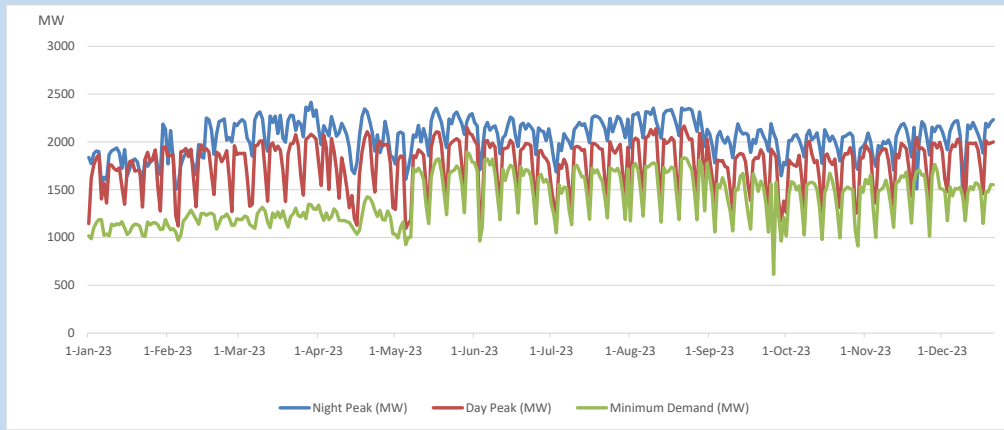


### 12. Variation of Major Hydro Reservoir Levels in the current year (GWh)





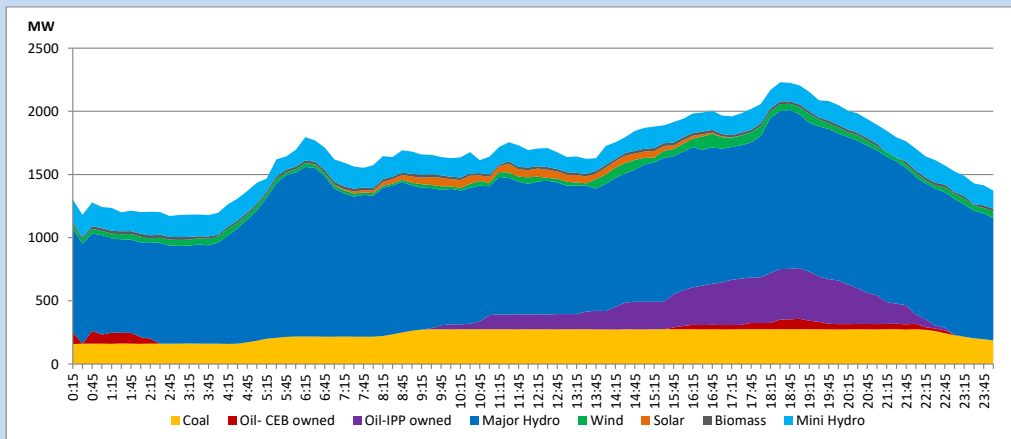
### 13. Variation of Demand during the current year



The above figures are excluding contribution from roof top solar, non telemetered solar and mini hydro plants

### 14. Daily Load Curve

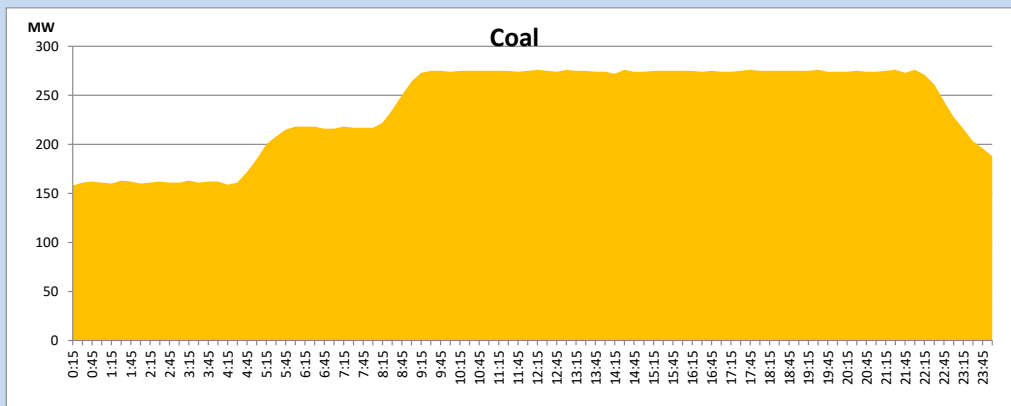
December 21, 2023



Solar and wind data is based on Telemetered Power Stations only

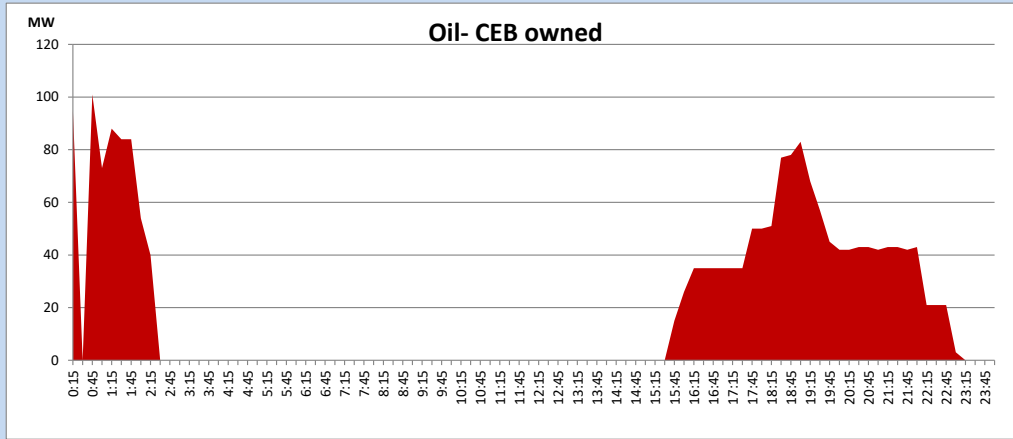
### Coal Generation during

December 21, 2023



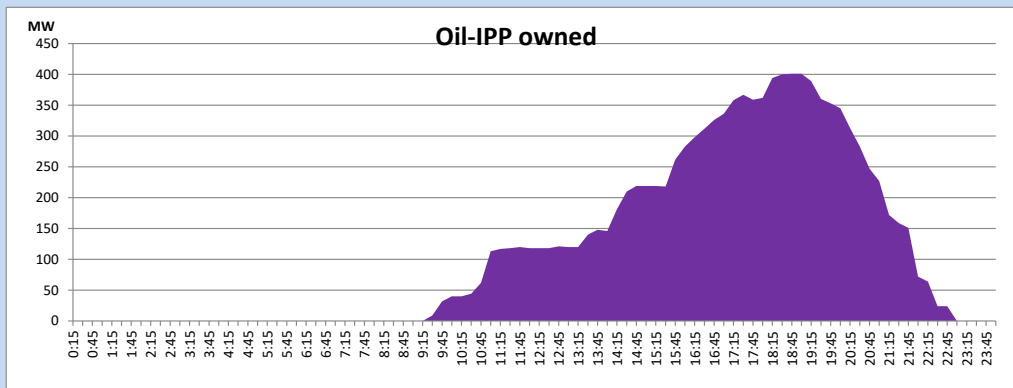
CEB Oil Plant Generation during

December 21, 2023



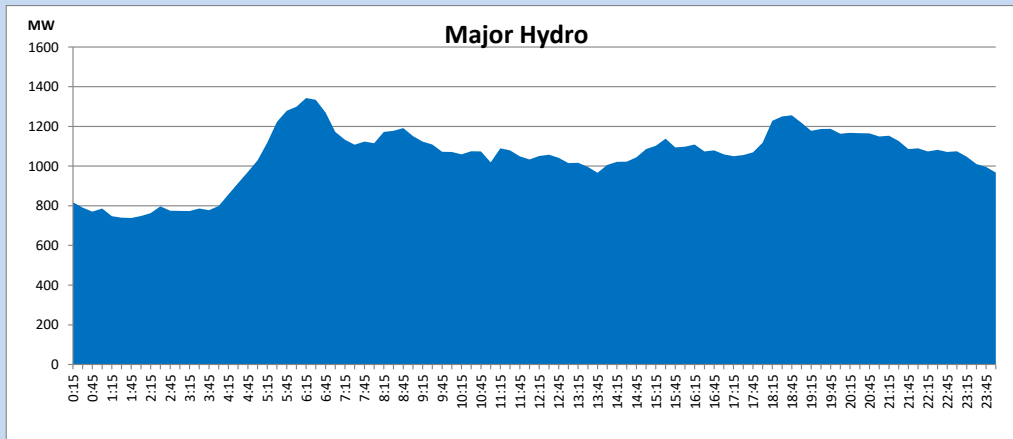
IPP Oil Plant Generation during

December 21, 2023



Major Hydro Generation during

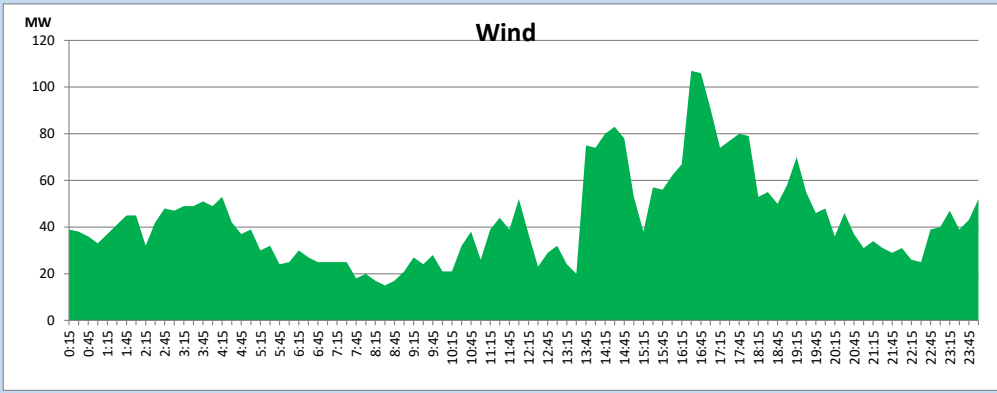
December 21, 2023



## Wind Generation during

December 21, 2023

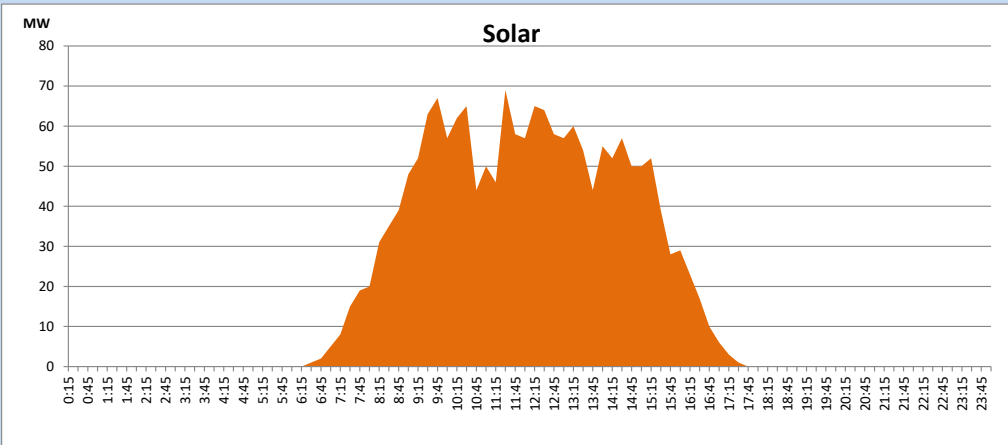
Based on Telemetered Power Stations only



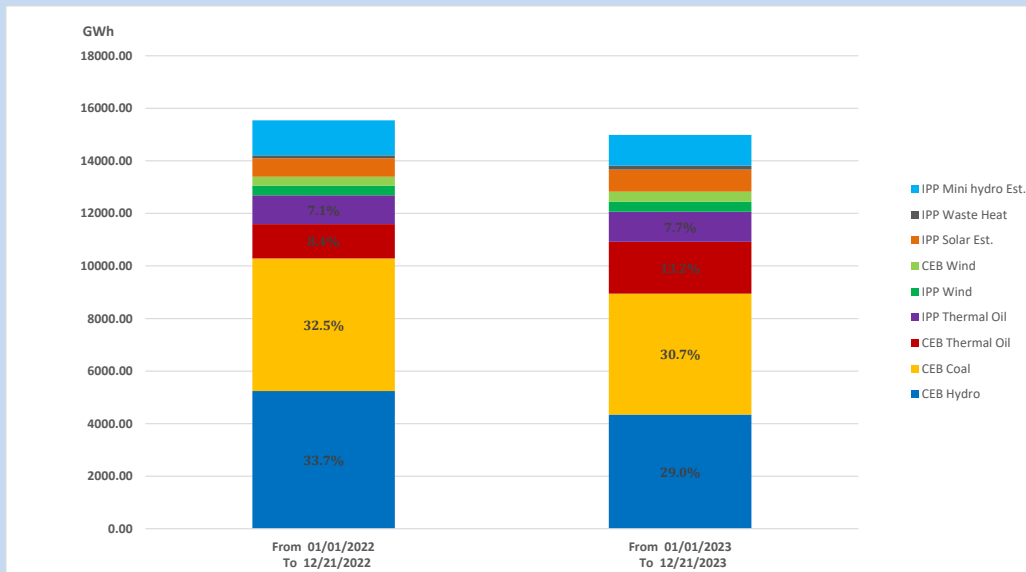
## Solar Generation during

December 21, 2023

Based on Telemetered Power Stations only



## 15. Cumulative Dispatch Comparison with Last Year



### Cumulative dispatch

From 01/01/2022 To 12/21/2022

15541 GWh

From 01/01/2023 To 12/21/2023

14990 GWh

The above figures are including contribution from roof top solar, non telemetered solar and mini hydro plants (figures have been adjusted based on the data from the CEB monthly review reports.)

Thermal Plant Fuel types

Table 08

Power Station	Primary Fuel
CEB Thermal	
Sapugaskanda 1	Heavy Fuel
Sapugaskanda 2	Heavy Fuel
Kelanitissa Small Gas Turbines	Auto Diesel
GT 7 - Kelanitissa	Auto Diesel
Kelanitissa CCY	Naphtha or Diesel
Lakvijaya 1	Coal
Lakvijaya 2	Coal
Lakvijaya 3	Coal
Uthuru Janani	Heavy Fuel
Barge CEB	Heavy Fuel
KCCPS -2	Auto Diesel

Power Station	Primary Fuel
Private Thermal	
West Coast	Auto Diesel / Heavy Fuel
ACE Matara	Heavy Fuel
ACE Embilipitiya	Heavy Fuel

Major Incidents reported during the day

December 21, 2023

- 1). WPS GSS T/F 01 which was tripped on 30/11/2023 , was normalized at 12:52hrs.