

Generation and Reservoirs Statistics

December 15, 2023



PUBLIC UTILITIES COMMISSION OF SRI LANKA

1. Daily Generation Mix in MWh

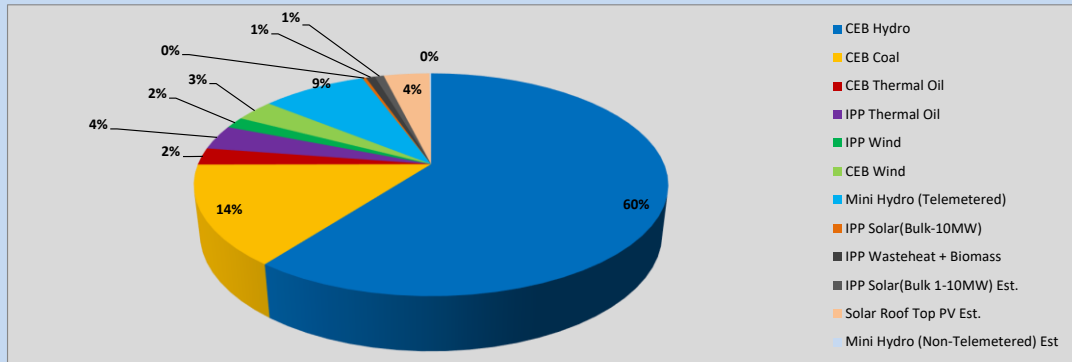


Table 01

	Generation (MWh)
CEB Hydro	24,868
CEB Coal	5,989
CEB Thermal Oil	1,014
IPP Thermal Oil	1,476
IPP Wind	681
CEB Wind	1,307
Mini Hydro (Telemetered)	3,519
IPP Solar (Bulk)	120
IPP Waste heat + Biomass	305
Total Generation (Excluding estimated figures)	39,279
* Estimated unserved energy	0
* Estimated Mini Hydro (Non telemetered)	51
* Estimated IPP Solar PV (Bulk 1-10MW)	304
* Estimated Solar Roof Top PV	1540
Total Generation (Including estimated figures)	41,174

* Estimated figures of CEB generation report

Table 02

	Installed Capacity (MW)
CEB Hydro	1409
CEB Coal	810
CEB Thermal Oil	781
IPP Thermal Oil (West Coast, ACE Matara and ACE Embilipitiya)	387
IPP Wind	148
CEB Wind	100
Mini Hydro	422
IPP Waste heat + Biomass	50
IPP Solar	136
Rooftop Solar (Ordinary)	277
Rooftop Solar (LT Bulk)	263
Rooftop Solar (HT Bulk)	70

Data Source - Monthly Review Report [Aug-2023]

2. Cumulative Dispatch

Following data excludes the contribution from roof top solar, non telemetered solar and mini hydro plants

Table 03 - Current Month

Category	Dispatch (GWh)	
CEB Hydro	380	64.38%
CEB Coal	73	12.32%
CEB Thermal Oil	12	2.07%
IPP Thermal	14	2.32%
SPP Wind	8	1.39%
CEB Wind	12	1.98%
Mini Hydro *	55	9.36%
IPP Solar *	31	5.20%
IPP Waste heat + BMP	6	0.97%
Total	590	

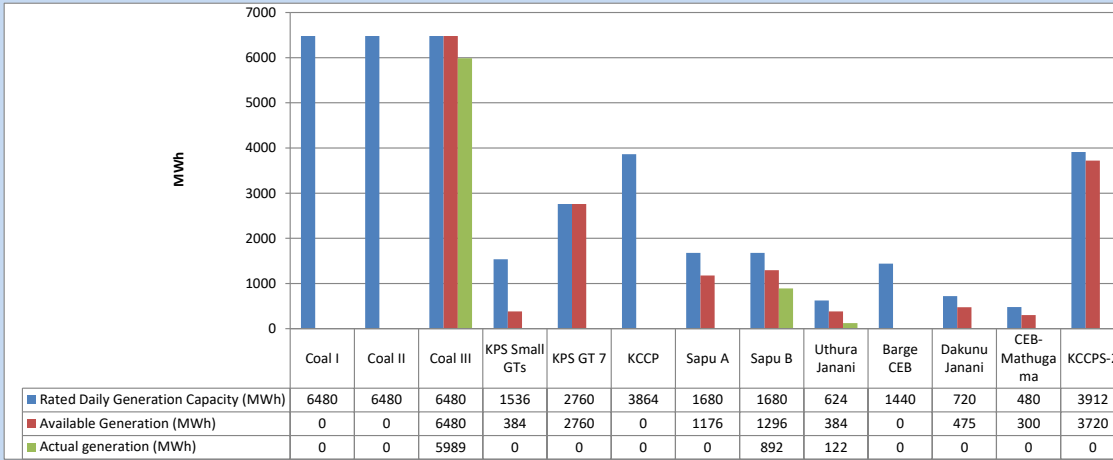
Table 04 - Current Year

Category	Dispatch (GWh)	
CEB Hydro	4,204	28.51%
CEB Coal	4,568	30.99%
CEB Thermal Oil	1,968	13.35%
IPP Thermal	1,141	7.74%
SPP Wind	381	2.59%
CEB Wind	375	2.54%
Mini Hydro *	1,128	7.65%
IPP Solar *	833	5.65%
IPP Waste heat	145	0.99%
Total	14,742	

*Including estimated contribution from non telemetered plants

3. CEB owned Thermal Plant Dispatch

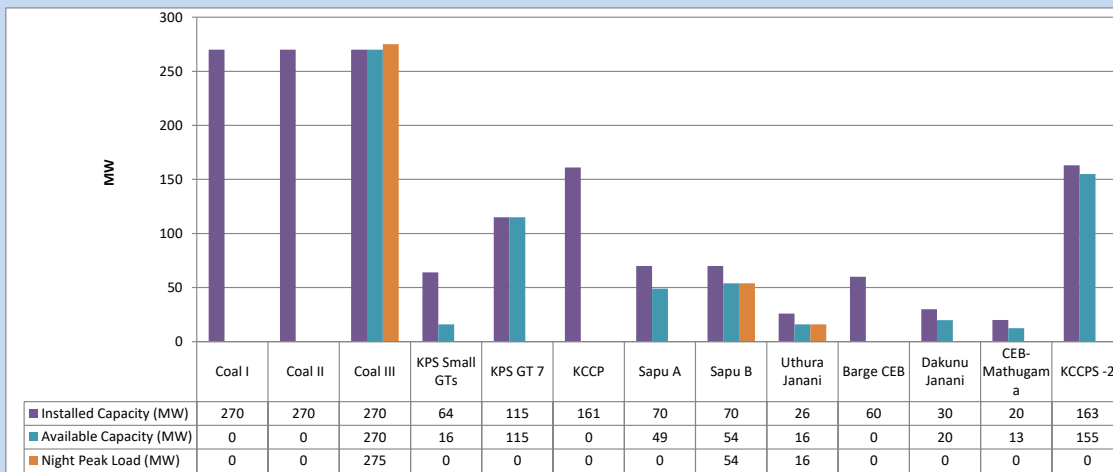
December 15, 2023



Available Generation is estimated based on plant availability at 6.00am on

December 16, 2023

4. CEB owned Thermal Plant Loading at the Night Peak

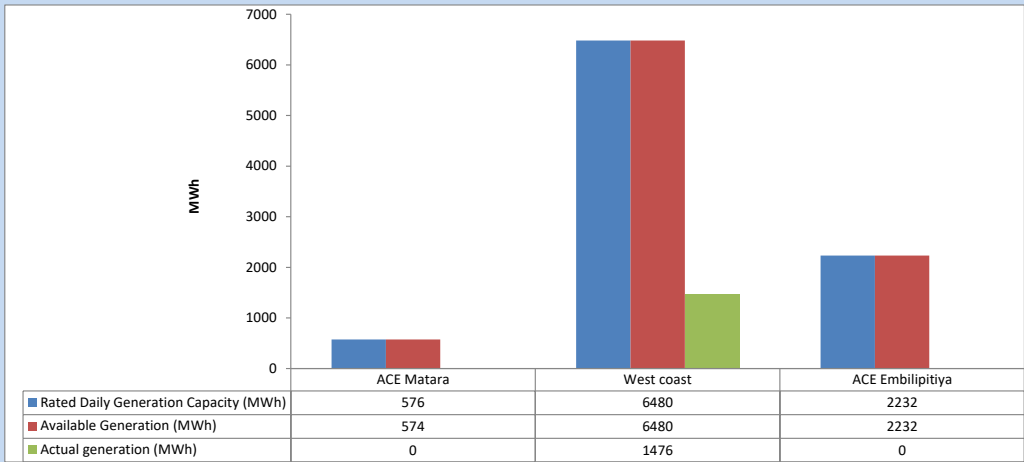


Plant availability is recorded at 6.00 am on

December 16, 2023

5. IPP owned Thermal Plant Dispatch

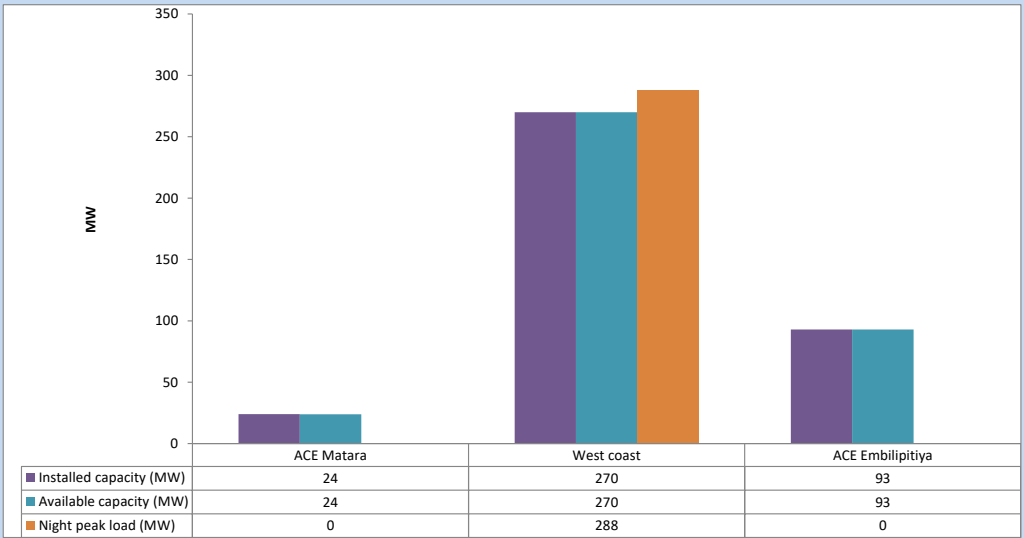
December 15, 2023



Available Generation is estimated based on plant availability at 6.00am on

December 16, 2023

6. IPP owned Thermal Plant Loading at the Night Peak

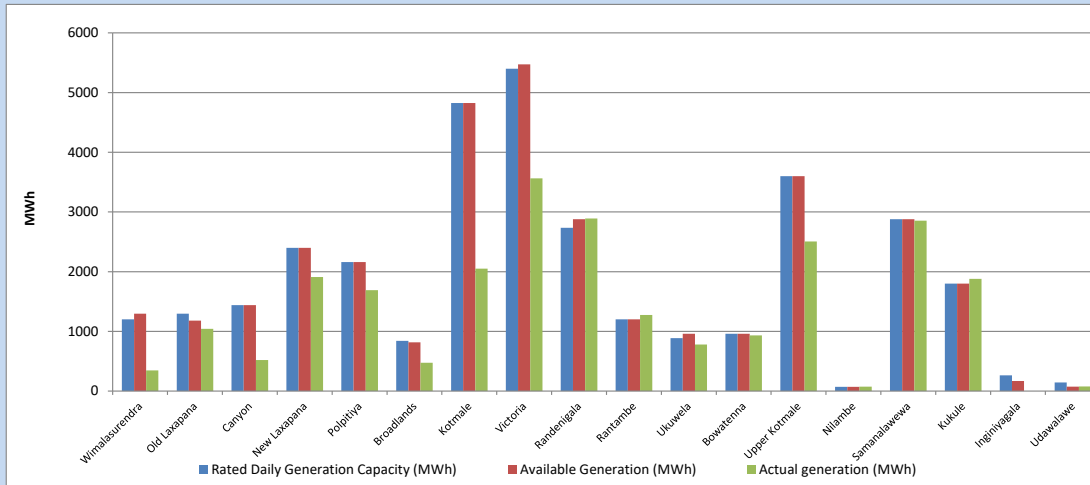


Plant availability is recorded at 6.00 am on

December 16, 2023

7. Major Hydro Plant Dispatch

December 15, 2023

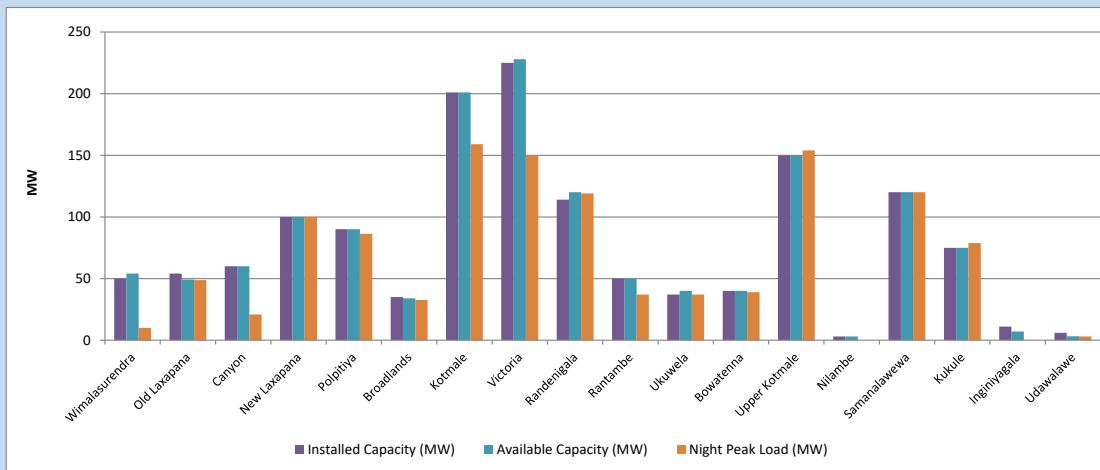


Available Generation is estimated based on plant availability at 6.00am on December 16, 2023
Broadlands power plant is operating in the Commissioning Stage

December 16, 2023

8. Major Hydro Plant Loading at Night Peak

December 15, 2023



Plant availability is recorded at 6.00 am on December 16, 2023
Broadlands power plant is operating in the Commissioning Stage

December 16, 2023

9. Summary of Major Plant performance

Table 05

Plant	Installed Capacity	Plant Availability	Night peak Load	Plant Dispatch
	(MW)	(MW)	(MW)	(MWh)
Wimalasurendra	50	54	10	345
Old Laxapana	54	49	49	1,043
Canyon	60	60	21	520
New Laxapana	100	100	100	1,911
Polpitiya	90	90	86	1,690
Broadlands	35	34	33	474
Kotmale	201	201	159	2,050
Victoria	225	228	150	3,563
Randenigala	114	120	119	2,892
Rantambe	50	50	37	1,274
Ukuwela	37	40	37	781
Bowatenna	40	40	39	933
Upper Kotmale	150	150	154	2,506
Nilambe	3	3	0	75
Samanalawewa	120	120	120	2,855
Kukule	75	75	79	1,879
Inginiyagala	11	7	0	0
Udawalawe	6	3	3	77
Puttalam Coal I	270	0	0	0
Puttalam Coal II	270	0	0	0
Puttalam Coal III	270	270	275	5,989
KPS Small GTs	64	16	0	0
KPS GT 7	115	115	0	0
KCCP	161	0	0	0
Sapugaskanda A	70	49	0	0
Sapugaskanda B	70	54	54	892
Uthura Janani	26	16	16	122
Barge CEB	60	0	0	0
CEB-Hambantota	30	20	0	0
CEB-Mathugama	20	13	0	0
ACE Matara	24	24	0	0
Asia Power	50	0	0	0
KCCPS -2	163	155	0	0
West Coast	270	270	288	1,476
Nothern Power	36	0	0	0
ACE Embilipitiya	93	93	0	0
Total	3,483	2,519	2,065	39,381

Plant availability is the availability recorded at 6 am on

December 16, 2023

10. Contribution to the Night Peak in MW

December 15, 2023

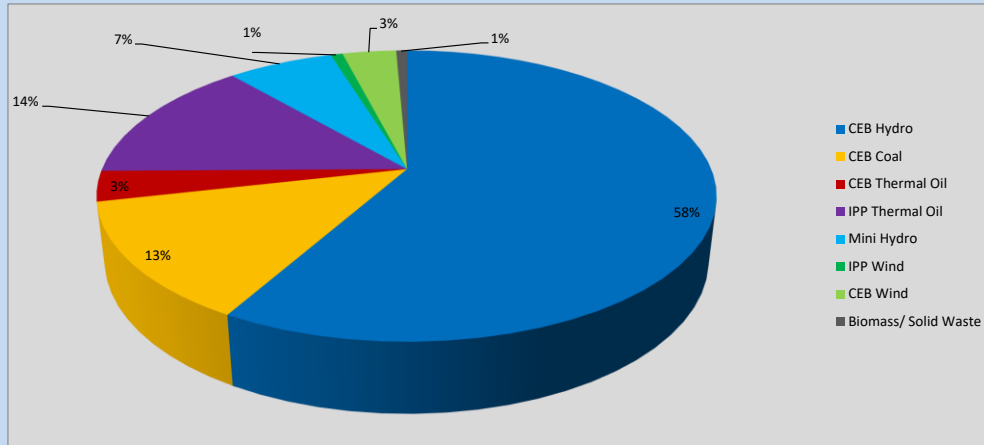


Table 06

CEB Hydro	1211	MW
CEB Coal	275	MW
CEB Thermal Oil	70	MW
IPP Thermal Oil	288	MW
Mini Hydro (Telemetered)	137	MW
IPP Wind	15.5	MW
CEB Wind	69.7	MW
Biomass/ Solid Waste	14	MW

Recorded Peak Demand Data

Table 07

Night Peak*	2,080	MW
Day Peak Maximum Demand	1,919	MW
Day Peak Minimum Demand	1,560	MW
Off Peak Minimum Demand	1,164	MW

Above figures are excluding contribution from roof top solar, non telemetered solar and mini hydro plants

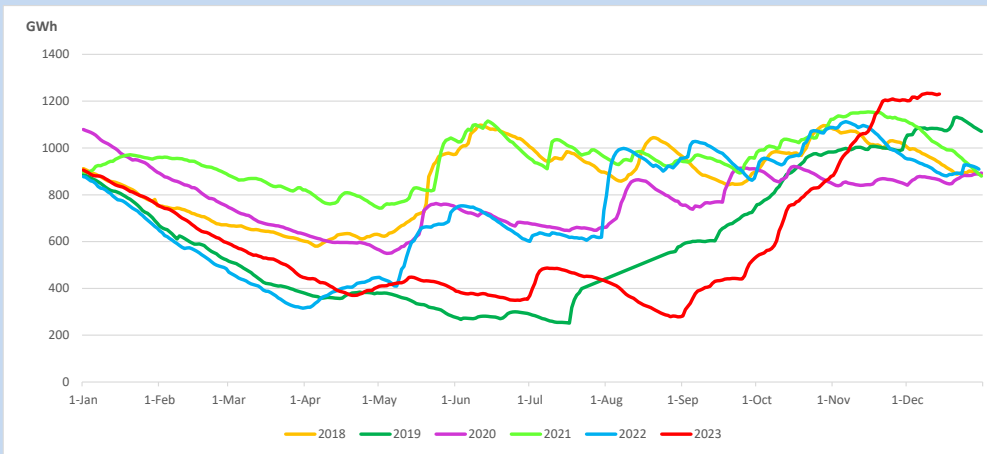
Reservoir Levels -

as at 06.00 Hr on December 16, 2023

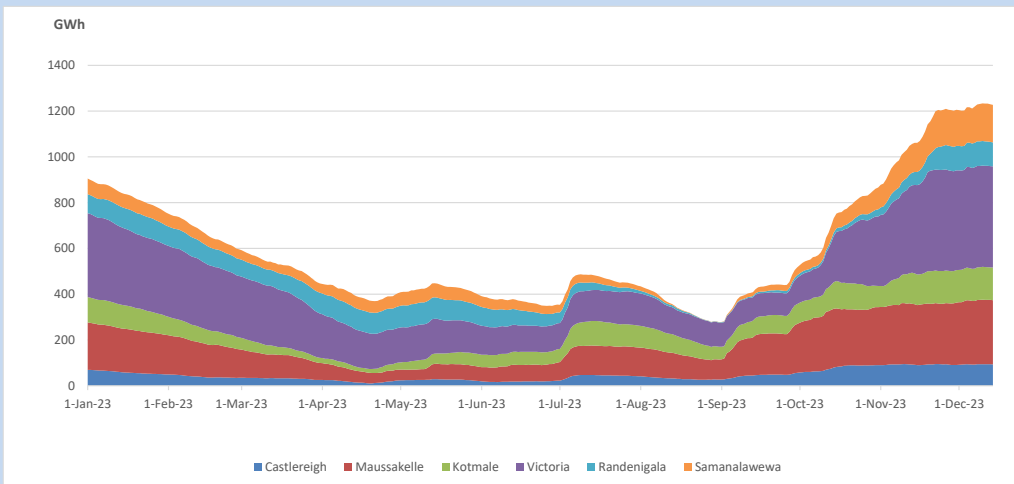


Total Reservoir Level 1230.6 GWh
 % of Total capacity 98.8%

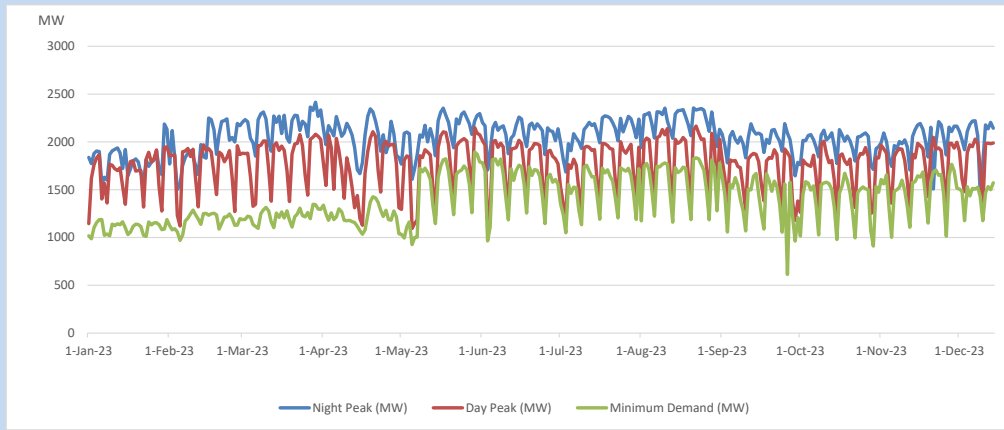
11. Comparison of Total Reservoir Storage Levels with Past Years



12. Variation of Major Hydro Reservoir Levels in the current year (GWh)



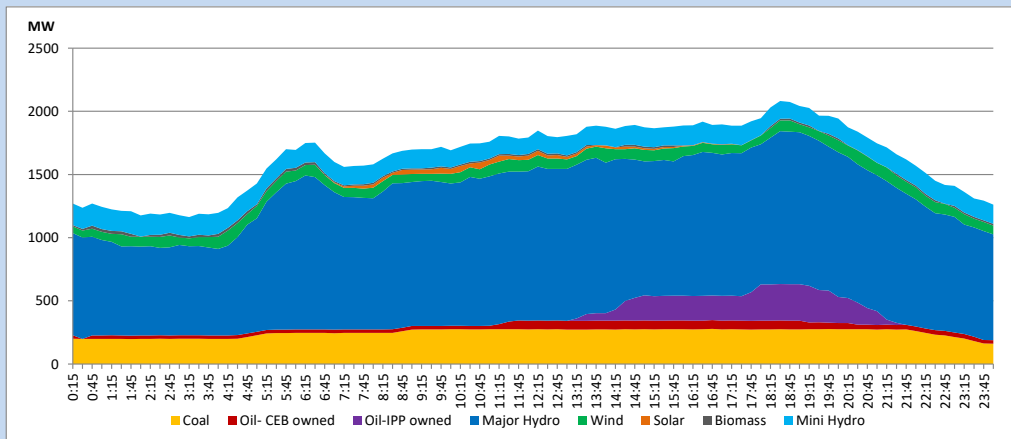
13. Variation of Demand during the current year



The above figures are excluding contribution from roof top solar, non telemetered solar and mini hydro plants

14. Daily Load Curve

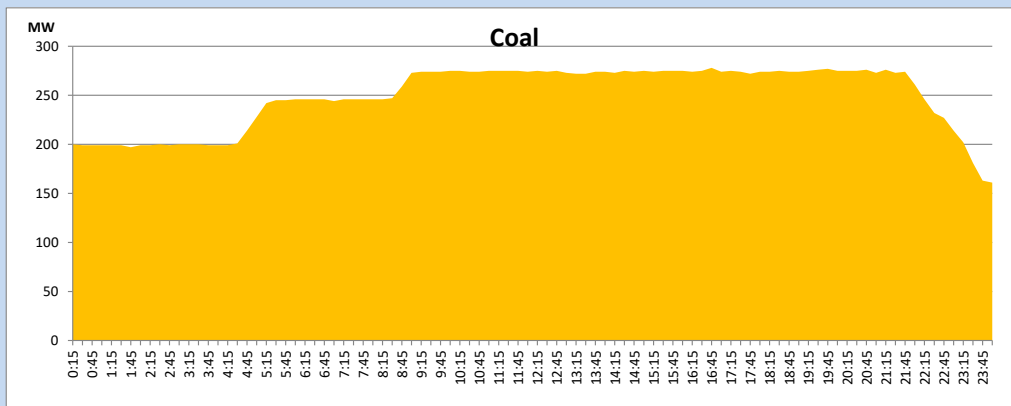
December 15, 2023



Solar and wind data is based on Telemetered Power Stations only

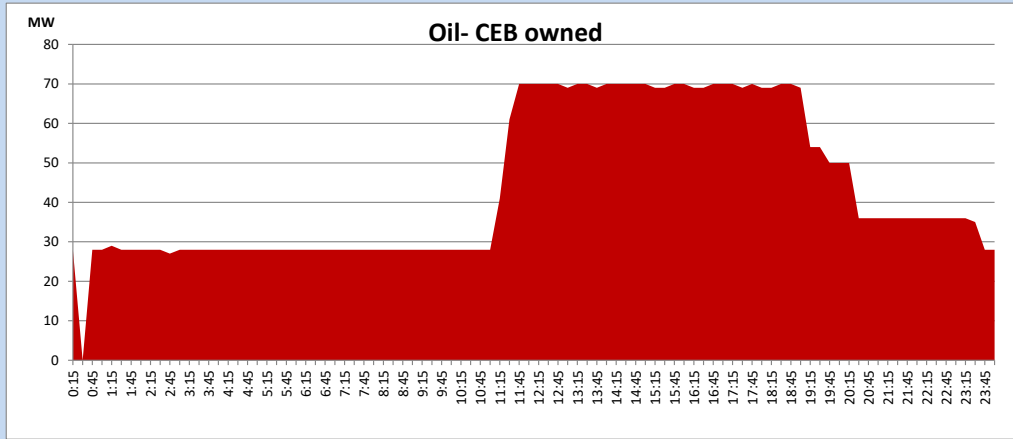
Coal Generation during

December 15, 2023



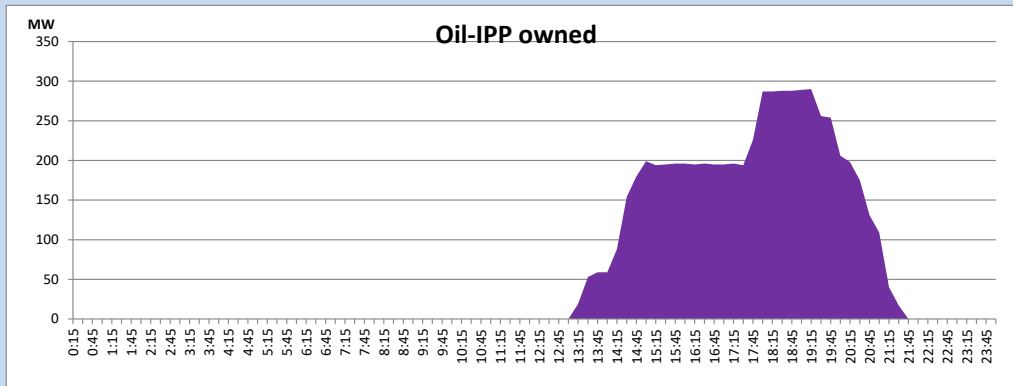
CEB Oil Plant Generation during

December 15, 2023



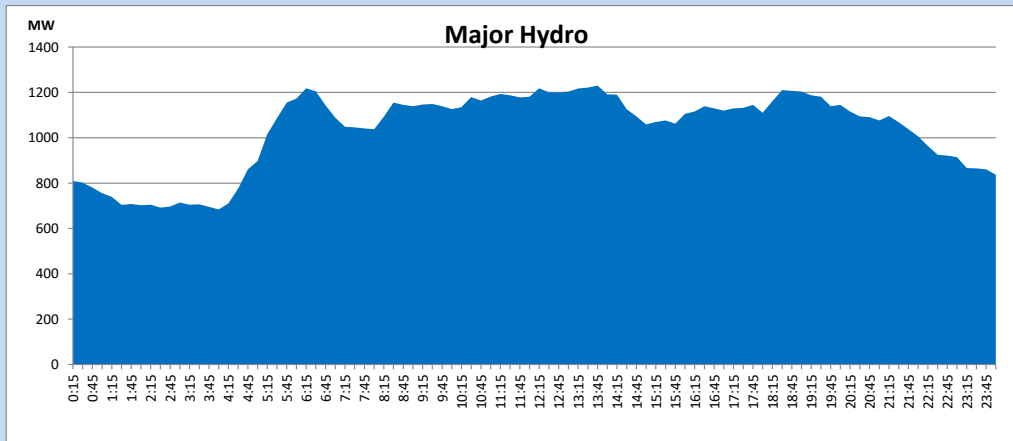
IPP Oil Plant Generation during

December 15, 2023



Major Hydro Generation during

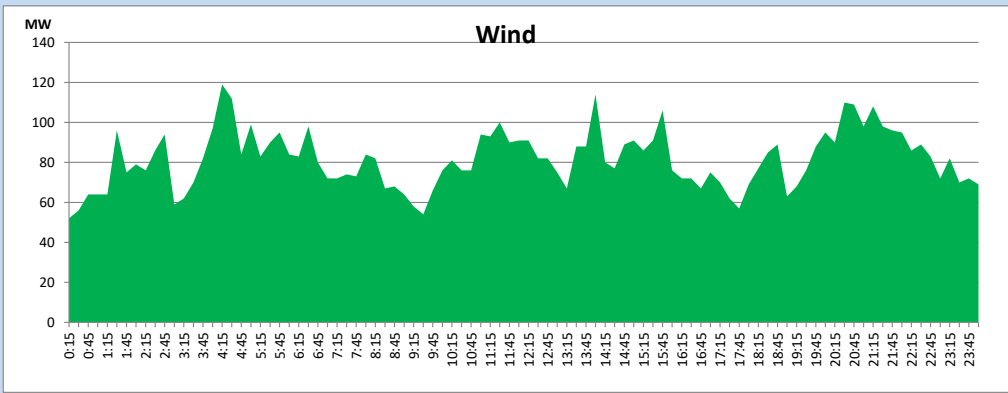
December 15, 2023



Wind Generation during

December 15, 2023

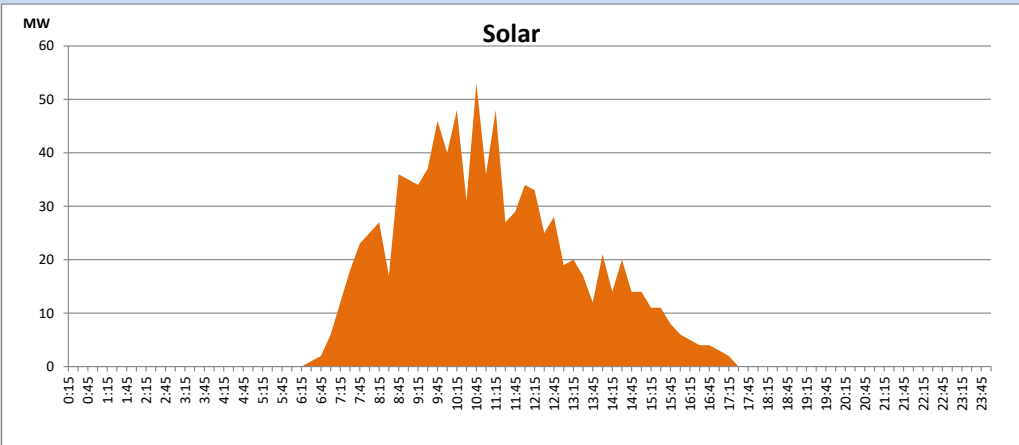
Based on Telemetered Power Stations only



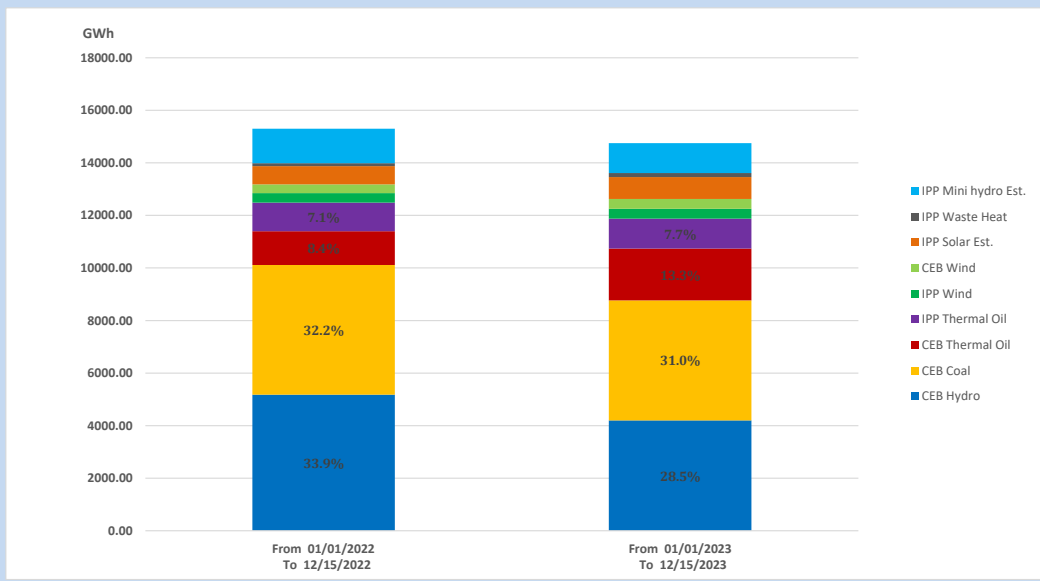
Solar Generation during

December 15, 2023

Based on Telemetered Power Stations only



15. Cumulative Dispatch Comparison with Last Year



Cumulative dispatch

From 01/01/2022 To 12/15/2022

15298 GWh

From 01/01/2023 To 12/15/2023

14753 GWh

The above figures are including contribution from roof top solar, non telemetered solar and mini hydro plants (figures have been adjusted based on the data from the CEB monthly review reports.)

Thermal Plant Fuel types

Table 08

Power Station	Primary Fuel
CEB Thermal	
Sapugaskanda 1	Heavy Fuel
Sapugaskanda 2	Heavy Fuel
Kelanitissa Small Gas Turbines	Auto Diesel
GT 7 - Kelanitissa	Auto Diesel
Kelanitissa CCY	Naphtha or Diesel
Lakvijaya 1	Coal
Lakvijaya 2	Coal
Lakvijaya 3	Coal
Uthuru Janani	Heavy Fuel
Barge CEB	Heavy Fuel
KCCPS -2	Auto Diesel

Power Station	Primary Fuel
Private Thermal	
West Coast	Auto Diesel / Heavy Fuel
ACE Matara	Heavy Fuel
ACE Embilipitiya	Heavy Fuel

Major Incidents reported during the day

December 15, 2023

- 1) Kukule pond spilling continues to the present hour.
- 2) Victoria reservoir spilling started at 15:32hrs and spilling stopped at 05:32hrs (16.12.2023).
- 3) Kothmale reservoir spilling started at 00:10hrs (16.12.2023) and spilling stopped at 03:30hrs (16.12.2023).
- 4) Upper Kothmale pond spilling started at 02:12hrs (16.12.2023) and continues to the present hour.