

# Generation and Reservoirs Statistics

December 14, 2023



**PUBLIC UTILITIES COMMISSION OF SRI LANKA**

## 1. Daily Generation Mix in MWh

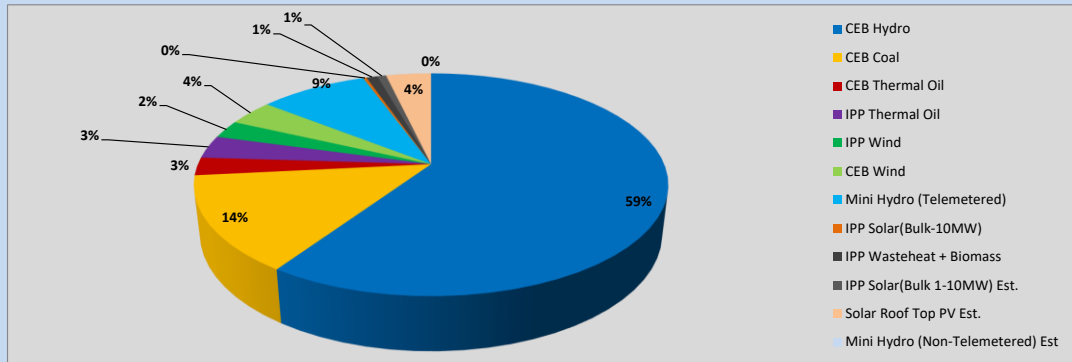


Table 01

	Generation (MWh)
CEB Hydro	24,942
CEB Coal	5,839
CEB Thermal Oil	1,089
IPP Thermal Oil	1,391
IPP Wind	1,087
CEB Wind	1,568
Mini Hydro (Telemetered)	3,694
IPP Solar (Bulk)	112
IPP Waste heat + Biomass	378
<b>Total Generation (Excluding estimated figures)</b>	<b>40,100</b>
* Estimated unserved energy	0
* Estimated Mini Hydro (Non telemetered)	-
* Estimated IPP Solar PV (Bulk 1-10MW)	304
* Estimated Solar Roof Top PV	1540
<b>Total Generation (Including estimated figures)</b>	<b>41,944</b>

\* Estimated figures of CEB generation report

Table 02

	Installed Capacity (MW)
CEB Hydro	1409
CEB Coal	810
CEB Thermal Oil	781
IPP Thermal Oil (West Coast, ACE Matara and ACE Embilipitiya)	387
IPP Wind	148
CEB Wind	100
Mini Hydro	422
IPP Waste heat + Biomass	50
IPP Solar	136
Rooftop Solar (Ordinary)	277
Rooftop Solar (LT Bulk)	263
Rooftop Solar (HT Bulk)	70

Data Source - Monthly Review Report [Aug-2023]

## 2. Cumulative Dispatch

Following data excludes the contribution from roof top solar, non telemetered solar and mini hydro plants

Table 03 - Current Month

Category	Dispatch (GWh)	
CEB Hydro	355	64.68%
CEB Coal	67	12.16%
CEB Thermal Oil	11	2.04%
IPP Thermal	12	2.23%
SPP Wind	8	1.37%
CEB Wind	10	1.89%
Mini Hydro *	52	9.42%
IPP Solar *	29	5.23%
IPP Waste heat + BMP	5	0.99%
<b>Total</b>	<b>549</b>	

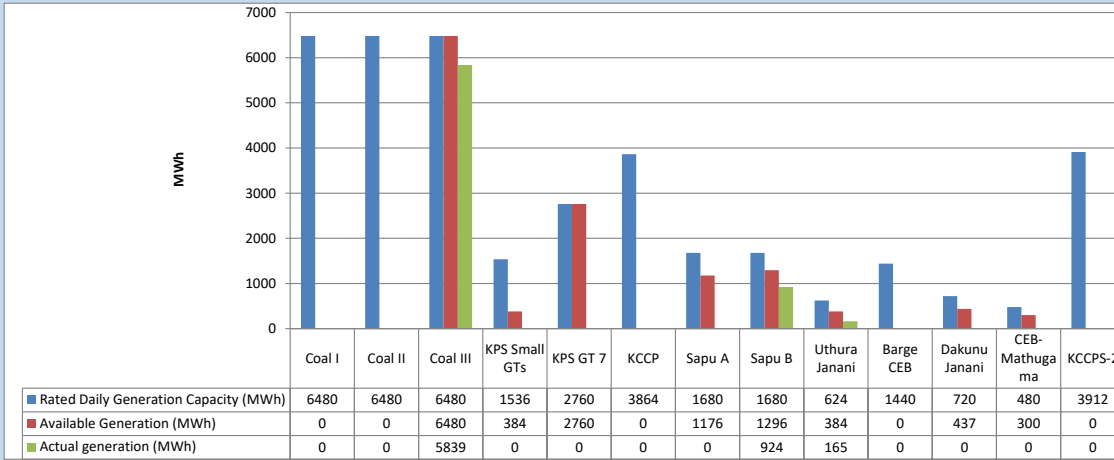
Table 04 - Current Year

Category	Dispatch (GWh)	
CEB Hydro	4,179	28.42%
CEB Coal	4,562	31.03%
CEB Thermal Oil	1,967	13.38%
IPP Thermal	1,139	7.75%
SPP Wind	381	2.59%
CEB Wind	373	2.54%
Mini Hydro *	1,124	7.65%
IPP Solar *	831	5.65%
IPP Waste heat	145	0.99%
<b>Total</b>	<b>14,701</b>	

\*Including estimated contribution from non telemetered plants

### 3. CEB owned Thermal Plant Dispatch

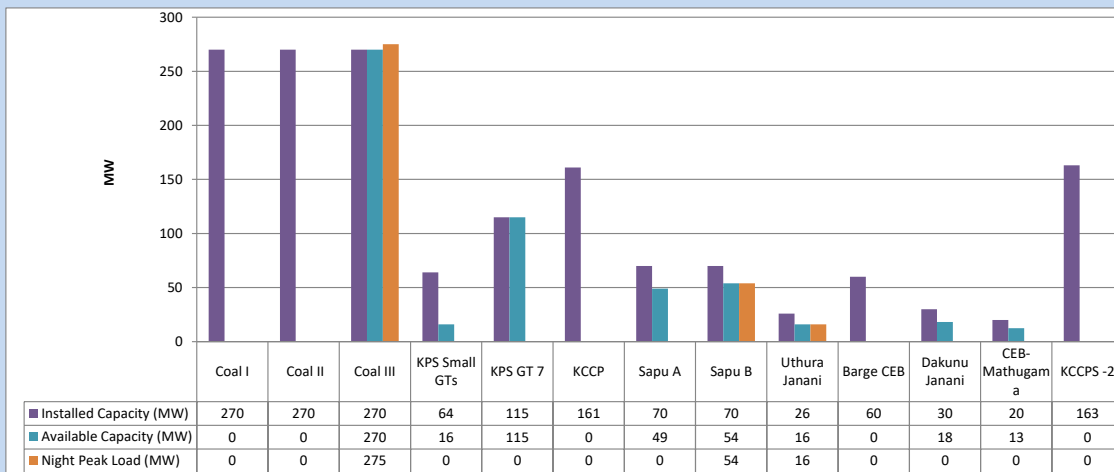
December 14, 2023



Available Generation is estimated based on plant availability at 6.00am on

December 15, 2023

### 4. CEB owned Thermal Plant Loading at the Night Peak

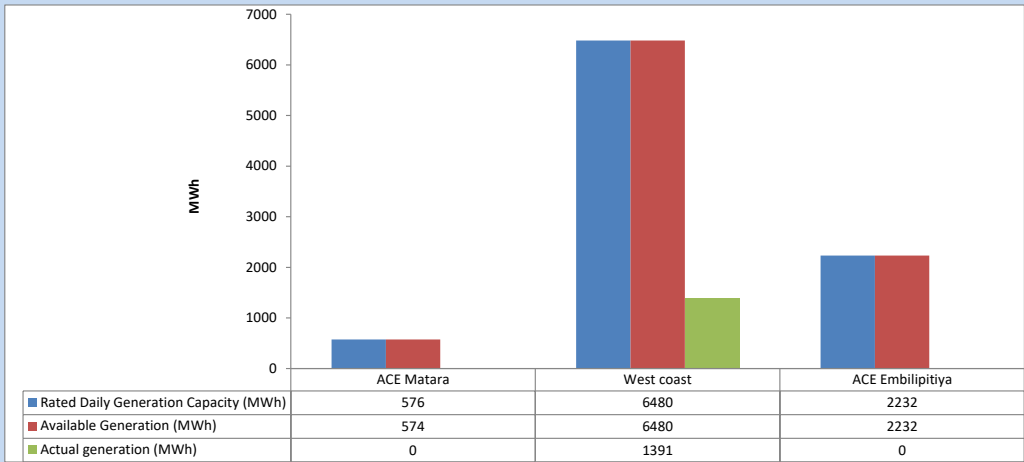


Plant availability is recorded at 6.00 am on

December 15, 2023

5. IPP owned Thermal Plant Dispatch

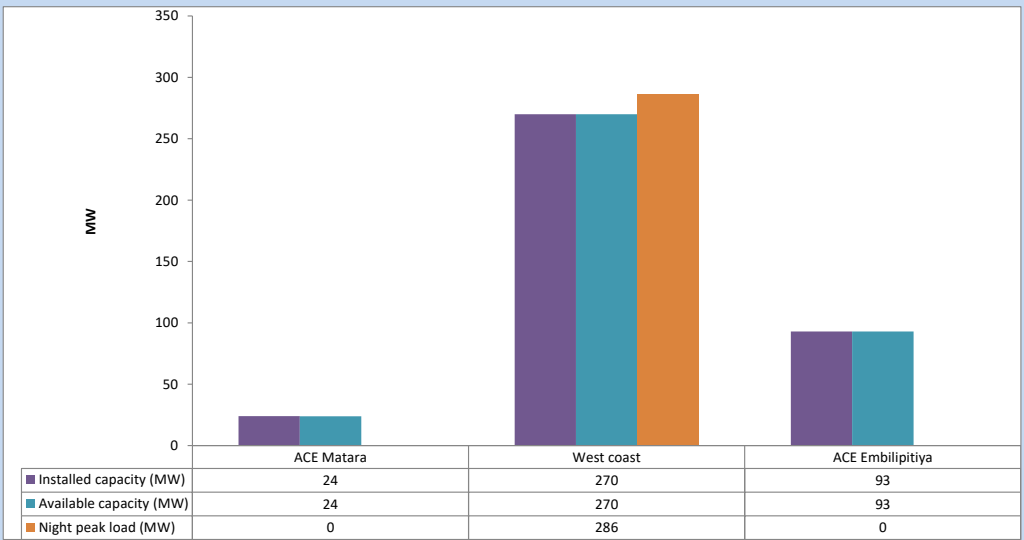
December 14, 2023



Available Generation is estimated based on plant availability at 6.00am on

December 15, 2023

6. IPP owned Thermal Plant Loading at the Night Peak

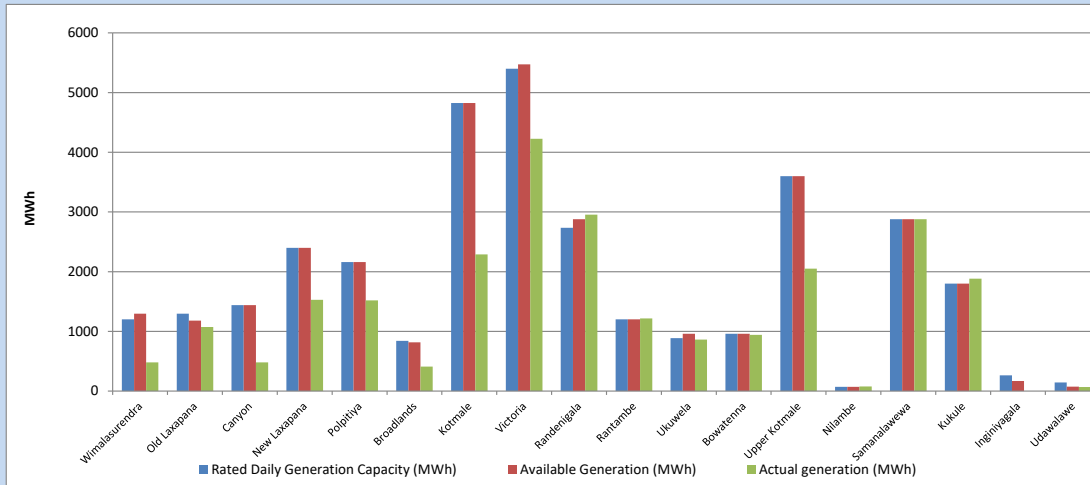


Plant availability is recorded at 6.00 am on

December 15, 2023

### 7. Major Hydro Plant Dispatch

December 14, 2023

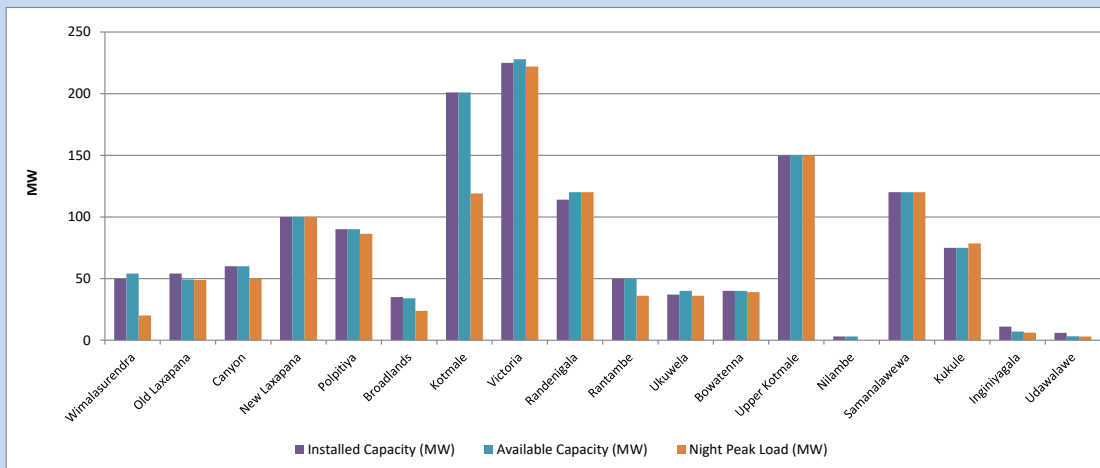


Available Generation is estimated based on plant availability at 6.00am on December 15, 2023  
Broadlands power plant is operating in the Commissioning Stage

December 15, 2023

### 8. Major Hydro Plant Loading at Night Peak

December 14, 2023



Plant availability is recorded at 6.00 am on December 15, 2023  
Broadlands power plant is operating in the Commissioning Stage

December 15, 2023

## 9. Summary of Major Plant performance

Table 05

Plant	Installed Capacity	Plant Availability	Night peak Load	Plant Dispatch
	(MW)	(MW)	(MW)	(MWh)
Wimalasurendra	50	54	20	480
Old Laxapana Canyon	54	49	49	1,072
New Laxapana	60	60	50	479
Polpitiya	100	100	100	1,529
Broadlands	90	90	86	1,520
Kotmale	35	34	24	411
Kotmale	201	201	119	2,290
Victoria	225	228	222	4,226
Randenigala	114	120	120	2,956
Rantambe	50	50	36	1,218
Ukuwela	37	40	36	861
Bowatenna	40	40	39	941
Upper Kotmale	150	150	150	2,051
Nilambe	3	3	0	76
Samanalawewa	120	120	120	2,879
Kukule	75	75	79	1,884
Inginiyagala	11	7	6	0
Udawalawe	6	3	3	69
Puttalam Coal I	270	0	0	0
Puttalam Coal II	270	0	0	0
Puttalam Coal III	270	270	275	5,839
KPS Small GTs	64	16	0	0
KPS GT 7	115	115	0	0
KCCP	161	0	0	0
Sapugaskanda A	70	49	0	0
Sapugaskanda B	70	54	54	924
Uthura Janani	26	16	16	165
Barge CEB	60	0	0	0
CEB-Hambantota	30	18	0	0
CEB-Mathugama	20	13	0	0
ACE Matara	24	24	0	0
Asia Power	50	0	0	0
KCCPS -2	163	0	0	0
West Coast	270	270	286	1,391
Nothern Power	36	0	0	0
ACE Embilipitiya	93	93	0	0
<b>Total</b>	<b>3,483</b>	<b>2,362</b>	<b>2,124</b>	<b>40,100</b>

Plant availability is the availability recorded at 6 am on

December 15, 2023

### 10. Contribution to the Night Peak in MW

December 14, 2023

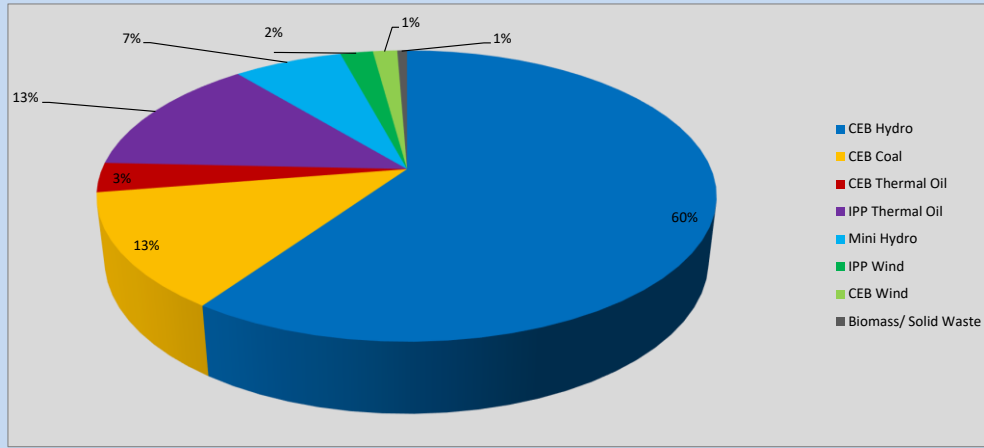


Table 06

CEB Hydro	1278	MW
CEB Coal	275	MW
CEB Thermal Oil	70	MW
IPP Thermal Oil	286	MW
Mini Hydro (Telemetered)	146	MW
IPP Wind	43.6	MW
CEB Wind	32.5	MW
Biomass/ Solid Waste	13	MW

### Recorded Peak Demand Data

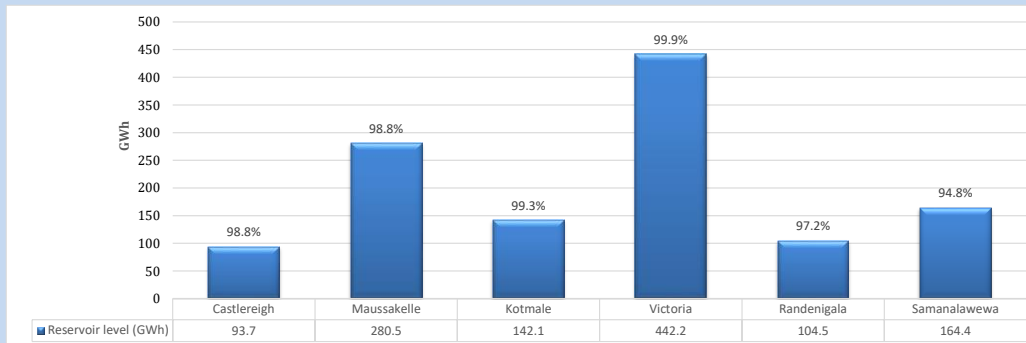
Table 07

Night Peak*	2,143	MW
Day Peak Maximum Demand	1,989	MW
Day Peak Minimum Demand	1,573	MW
Off Peak Minimum Demand	1,193	MW

Above figures are excluding contribution from roof top solar, non telemetered solar and mini hydro plants

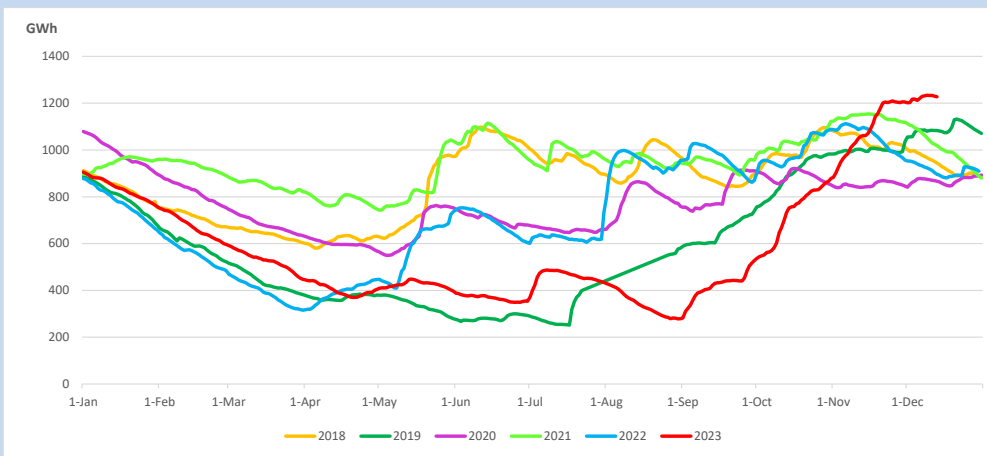
### Reservoir Levels -

as at 06.00 Hr on December 15, 2023

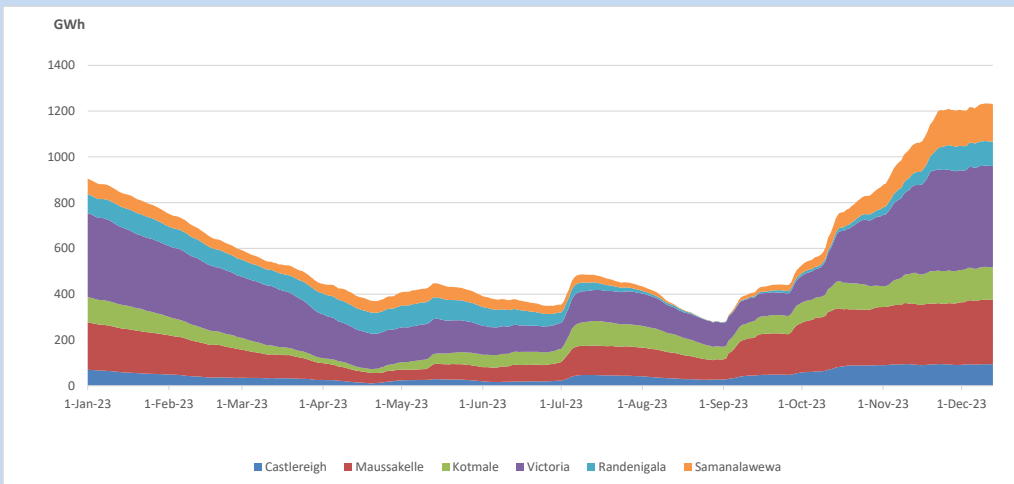


Total Reservoir Level 1227.4 GWh  
 % of Total capacity 98.6%

### 11. Comparison of Total Reservoir Storage Levels with Past Years

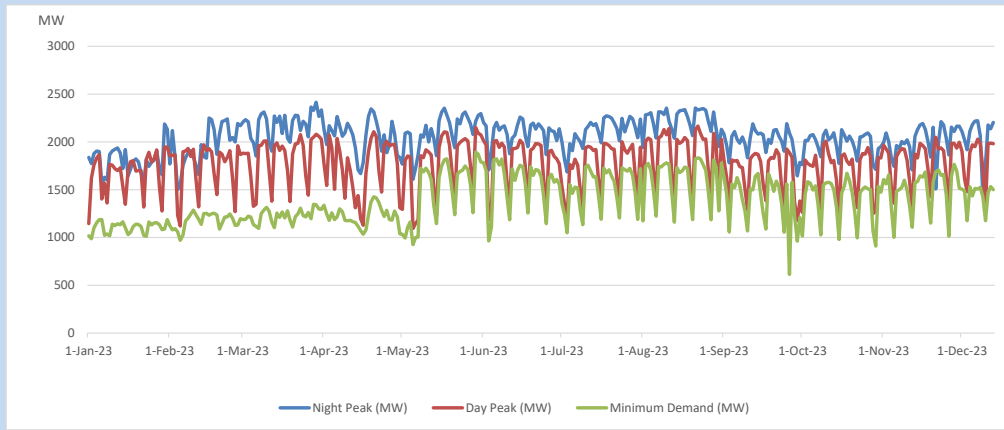


### 12. Variation of Major Hydro Reservoir Levels in the current year (GWh)





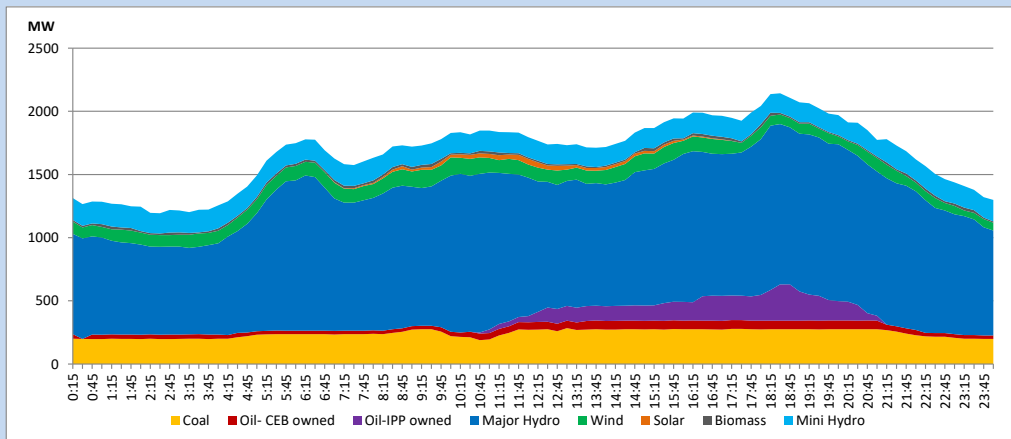
### 13. Variation of Demand during the current year



The above figures are excluding contribution from roof top solar, non telemetered solar and mini hydro plants

### 14. Daily Load Curve

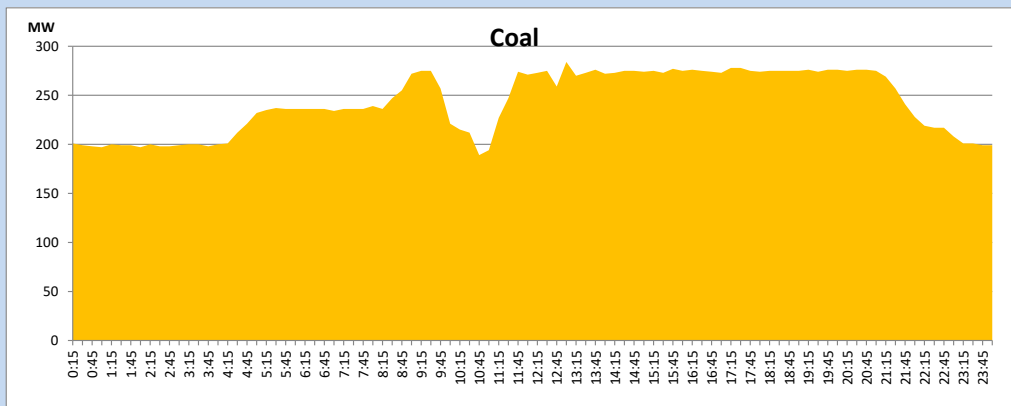
December 14, 2023



Solar and wind data is based on Telemetered Power Stations only

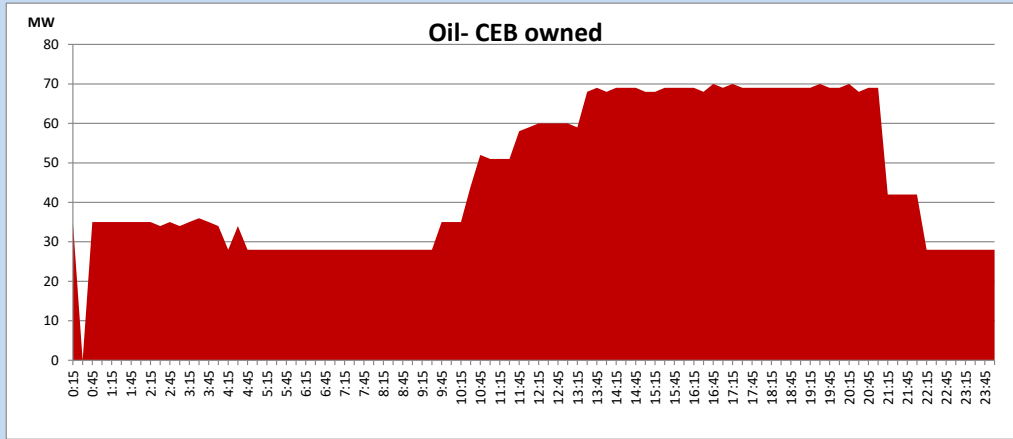
### Coal Generation during

December 14, 2023



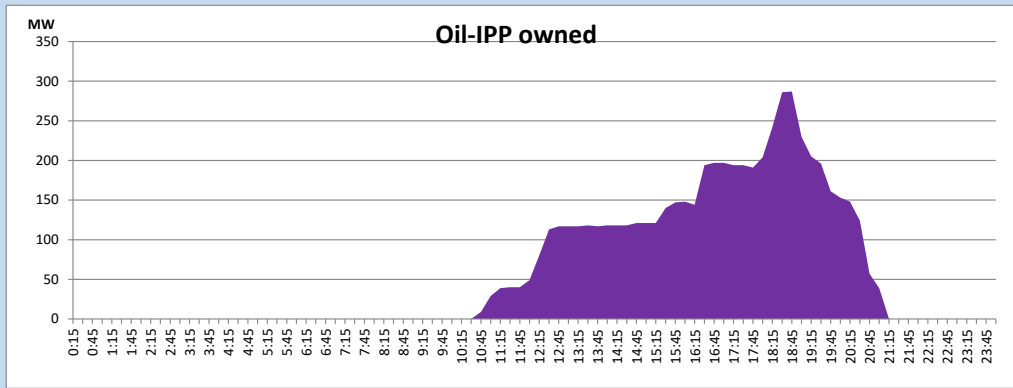
CEB Oil Plant Generation during

December 14, 2023



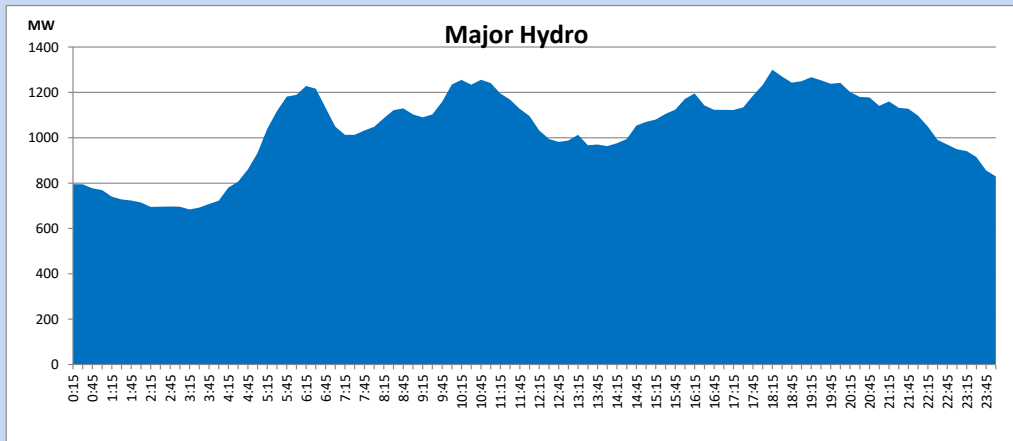
IPP Oil Plant Generation during

December 14, 2023



Major Hydro Generation during

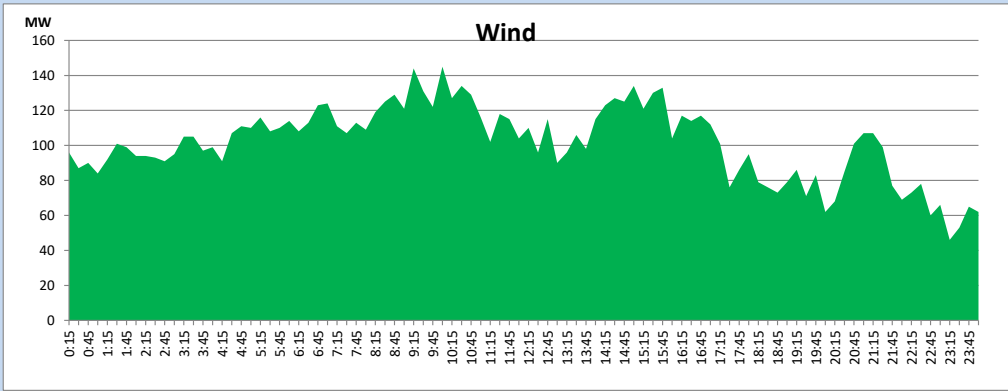
December 14, 2023



## Wind Generation during

December 14, 2023

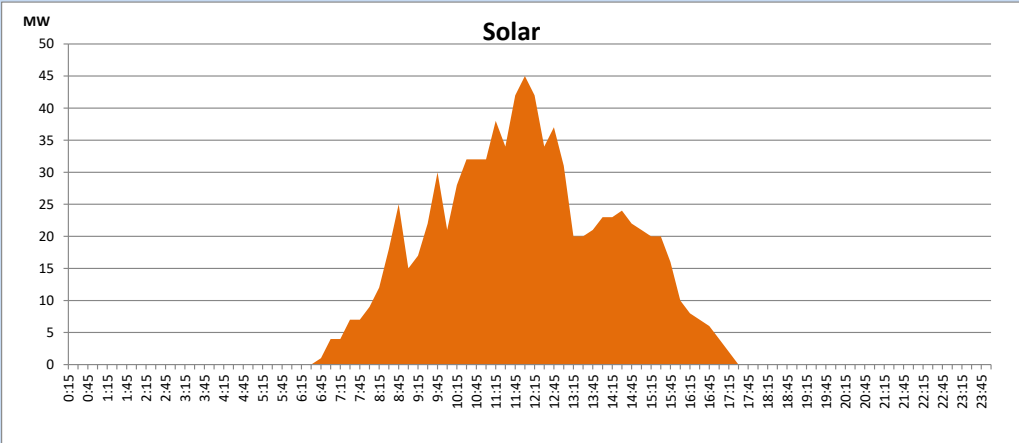
Based on Telemetered Power Stations only



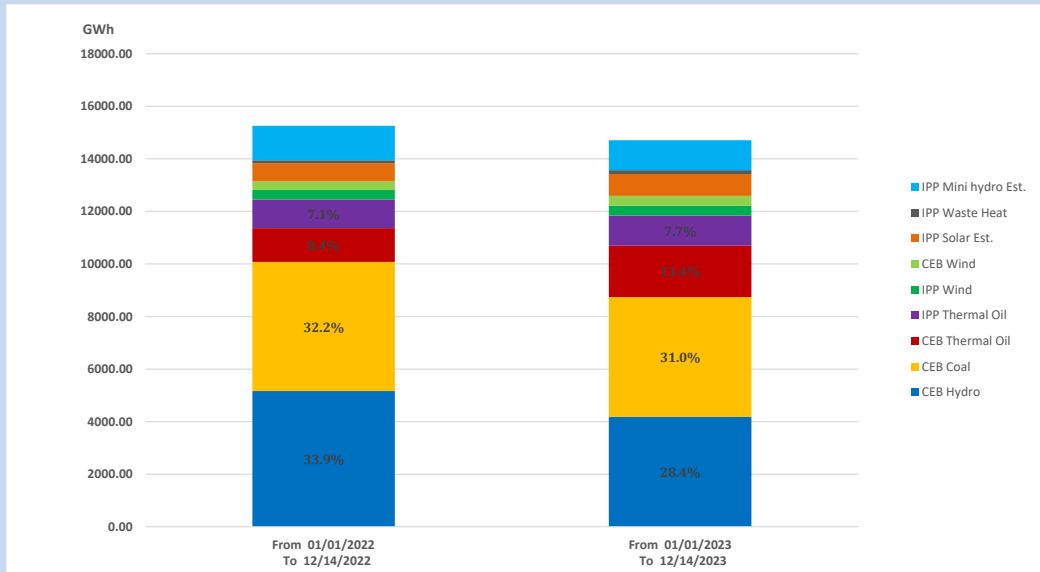
## Solar Generation during

December 14, 2023

Based on Telemetered Power Stations only



## 15. Cumulative Dispatch Comparison with Last Year



### Cumulative dispatch

From 01/01/2022 To 12/14/2022

15257 GWh

From 01/01/2023 To 12/14/2023

14712 GWh

The above figures are including contribution from roof top solar, non telemetered solar and mini hydro plants (figures have been adjusted based on the data from the CEB monthly review reports.)

Thermal Plant Fuel types

Table 08

Power Station	Primary Fuel
CEB Thermal	
Sapugaskanda 1	Heavy Fuel
Sapugaskanda 2	Heavy Fuel
Kelanitissa Small Gas Turbines	Auto Diesel
GT 7 - Kelanitissa	Auto Diesel
Kelanitissa CCY	Naphtha or Diesel
Lakvijaya 1	Coal
Lakvijaya 2	Coal
Lakvijaya 3	Coal
Uthuru Janani	Heavy Fuel
Barge CEB	Heavy Fuel
KCCPS -2	Auto Diesel

Power Station	Primary Fuel
Private Thermal	
West Coast	Auto Diesel / Heavy Fuel
ACE Matara	Heavy Fuel
ACE Embilipitiya	Heavy Fuel

Major Incidents reported during the day

December 14, 2023

- 1) Kukule pond spilling continues to the present hour.